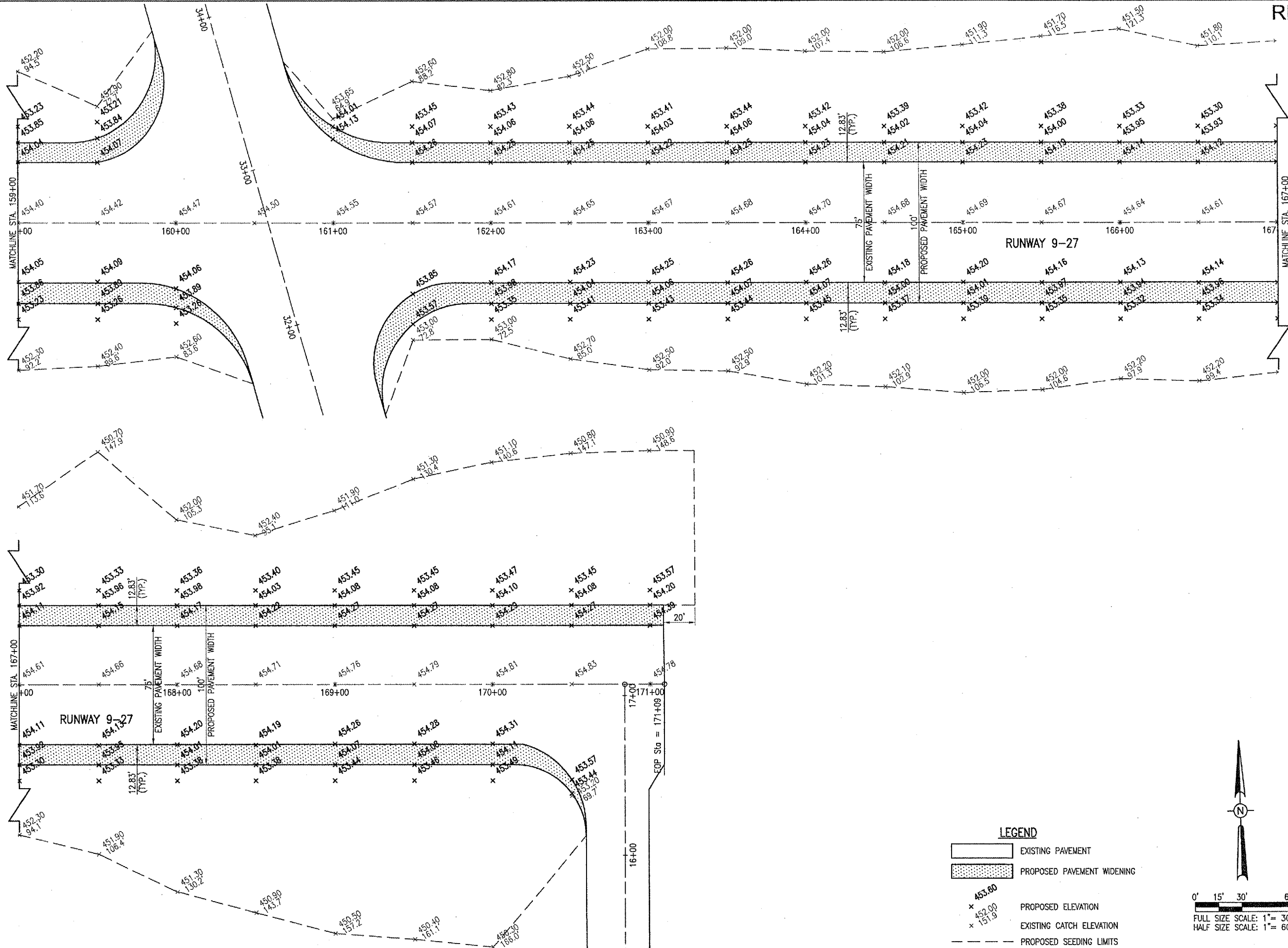


JUN 29, 2006 8:33 AM CAH
 I:\AIRPORTS\ROBINSON\838-04RWY\AIRPORT\SHEETS\8-191STK.DWG - 159+00 to 171+09

RB014



LEGEND

- EXISTING PAVEMENT
- PROPOSED PAVEMENT WIDENING
- PROPOSED ELEVATION
- EXISTING CATCH ELEVATION
- PROPOSED SEEDING LIMITS

0' 15' 30' 60'
 FULL SIZE SCALE: 1" = 30'
 HALF SIZE SCALE: 1" = 60'

DATE	REVISION	BY

ROBINSON MUNICIPAL AIRPORT
 ROBINSON
 CRAWFORD COUNTY, ILLINOIS

IL PROJ.: RSV-3490 A.I.P. PROJ.: 3-17-0086-810

Proj. No. 838-04RWY	
Filename R-191STK.DWG	
Scale 1"=30'	
Date 01/13/04	
LAYOUT	CCC 01/13/04
DRAWN	CCC 01/13/04
REVIEWED	CAH 03/05/04

HANSON
 Henson Professional Services Inc.
 1526 South Sixth Street
 Springfield, IL 62768-2886
 Chicago, Illinois

**RUNWAY 9-27
 WIDENING**

PROPOSED
 STAKING PLAN

STA. 159+00 TO STA. 171+09