

NOTE:
TOP LAYER OF SUPERPAVE BITUMINOUS CONCRETE SURFACE COURSE SHALL BE COMPACTED TO A SINGLE CONSISTENT LIFT OF 2" THICKNESS.

PAVEMENT DETAILS

W-A
BITUMINOUS CONCRETE SURFACE COURSE, METHOD 1, SUPERPAVE OVERLAY, MIN. THICKNESS 2". AT LOCATIONS WHERE EXISTING SURFACE DOES NOT ALLOW 2" OVERLAY, MILL AS REQUIRED.

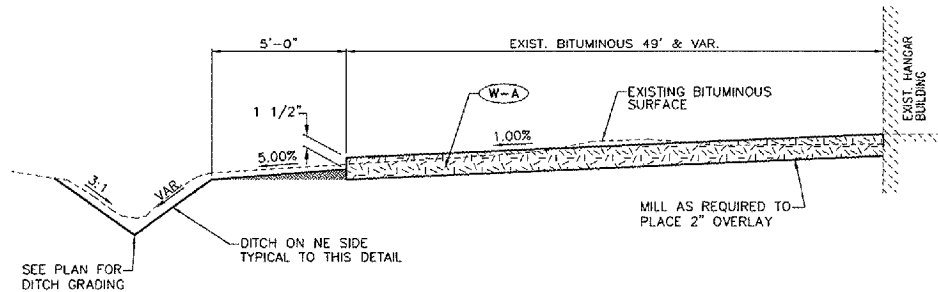
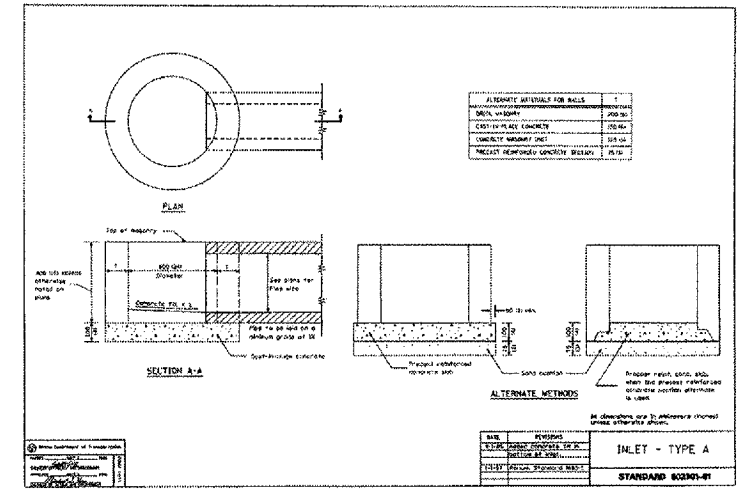
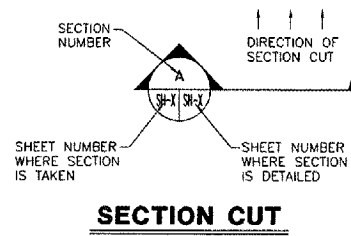
-EXISTING SURFACE TO BE CLEARED OF FOREIGN LOOSE DEBRIS AND HAVE BITUMINOUS MATERIALS (TACK COAT) APPLIED.

BITUMINOUS PAVEMENT SHALL CONFORM TO CRITERIA FOR PARKING APRONS DESIGNED FOR AIRCRAFTS UNDER 60,000 POUNDS.

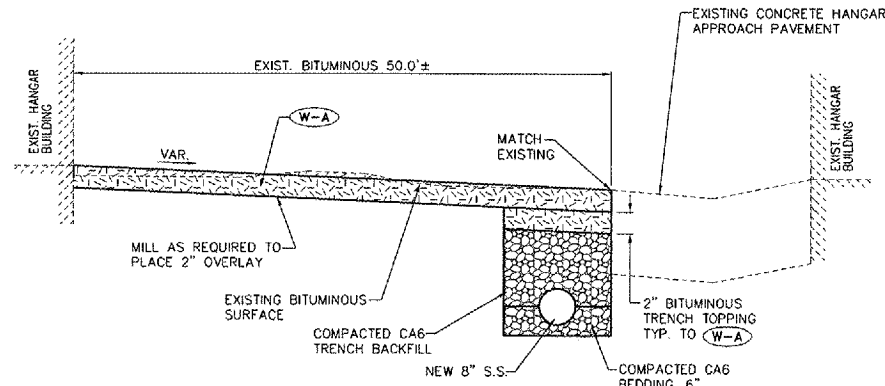
W-B
SUPPORT **W-A** PAVEMENT WITH 6" BITUMINOUS CONCRETE SURFACE COURSE, METHOD 1, SUPERPAVE, TO PROVIDE A FULL DEPTH BITUMINOUS SUPERPAVE PAVEMENT, 8" THICK. EXISTING PAVEMENT TO BE REMOVED AS REQUIRED TO PROVIDE 8" TOTAL THICKNESS.

-EXCAVATED SURFACE TO BE CLEARED OF FOREIGN LOOSE DEBRIS AND HAVE BITUMINOUS MATERIALS (TACK COAT) APPLIED.

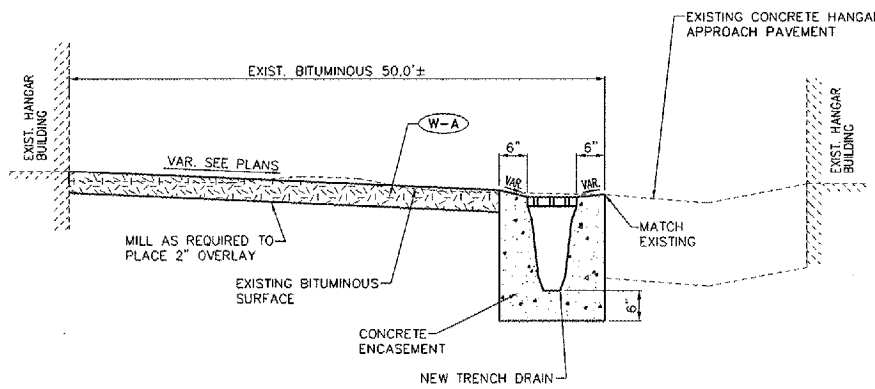
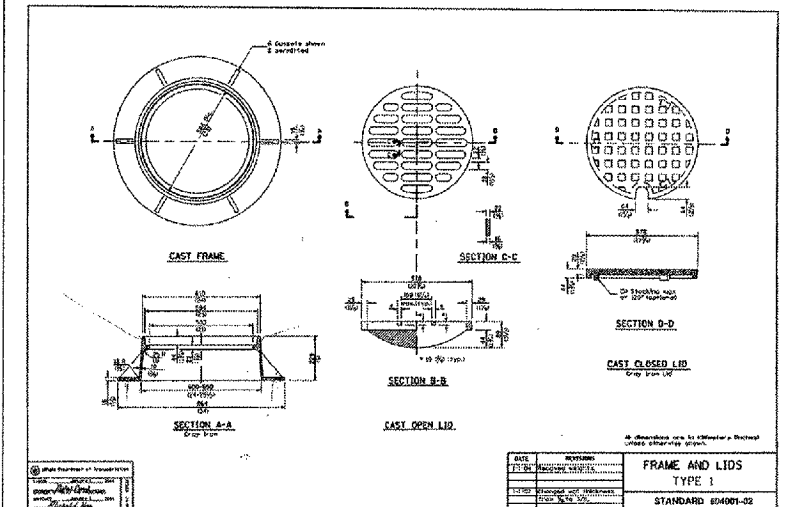
BITUMINOUS PAVEMENT SHALL CONFORM TO CRITERIA FOR PARKING APRONS DESIGNED FOR AIRCRAFTS UNDER 60,000 POUNDS.



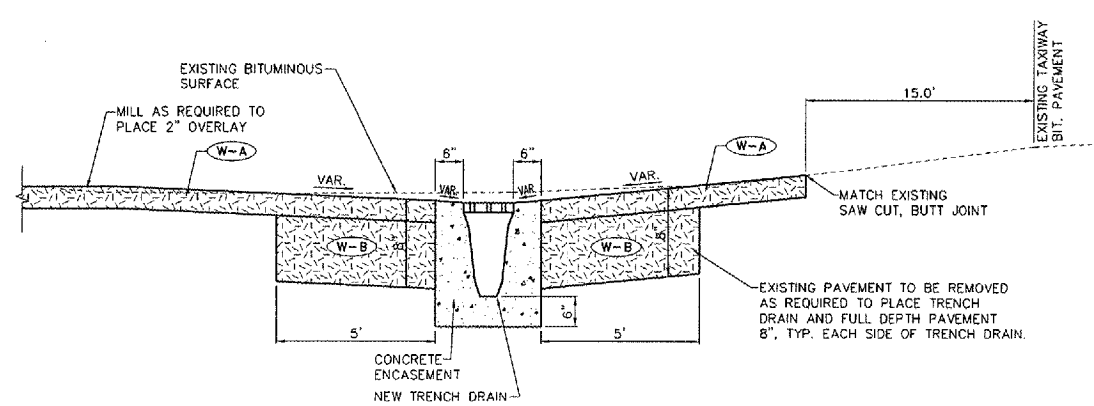
1 SECTION THRU APRON
SCALE: NONE



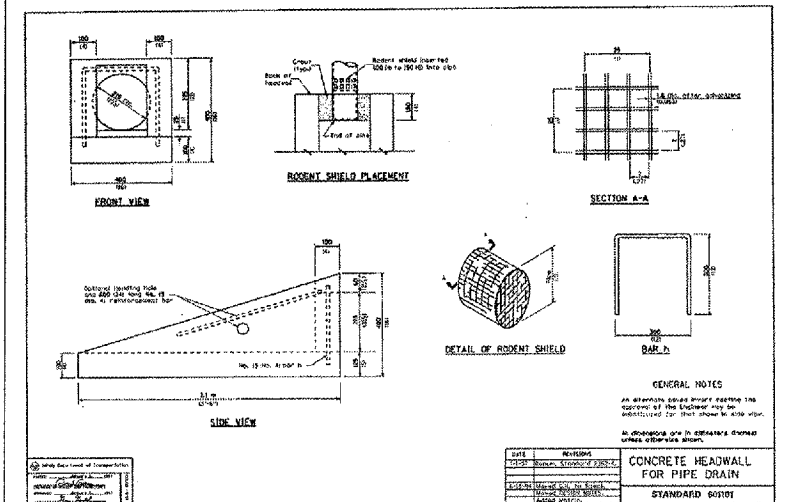
2 SECTION THRU APRON
SCALE: NONE



3 SECTION THRU APRON
SCALE: NONE



4 SECTION THRU APRON
SCALE: NONE



ILLINOIS PROJECT: SLO-3602
AIP PROJECT NO: 3-17-0089-B11

2524 South Broadway, P.O. Box 850
Salem, Illinois 62881
PH(618)548-3500
FAX(618)548-5246
IL Design Firm Registration
No. 184-001518

REHABILITATE T-HANGER TAXIWAYS
SALEM LECKRONE AIRPORT
SALEM, ILLINOIS

TYPICAL SECTIONS
AND
MISC. DETAILS

DATE	REVISION	CHECKED	DATE	SHEET
06/27/08		JAS	06/27/08	5
		MRO		
		JMW/BLT		
			JOB NO.	OF
			200602803	5