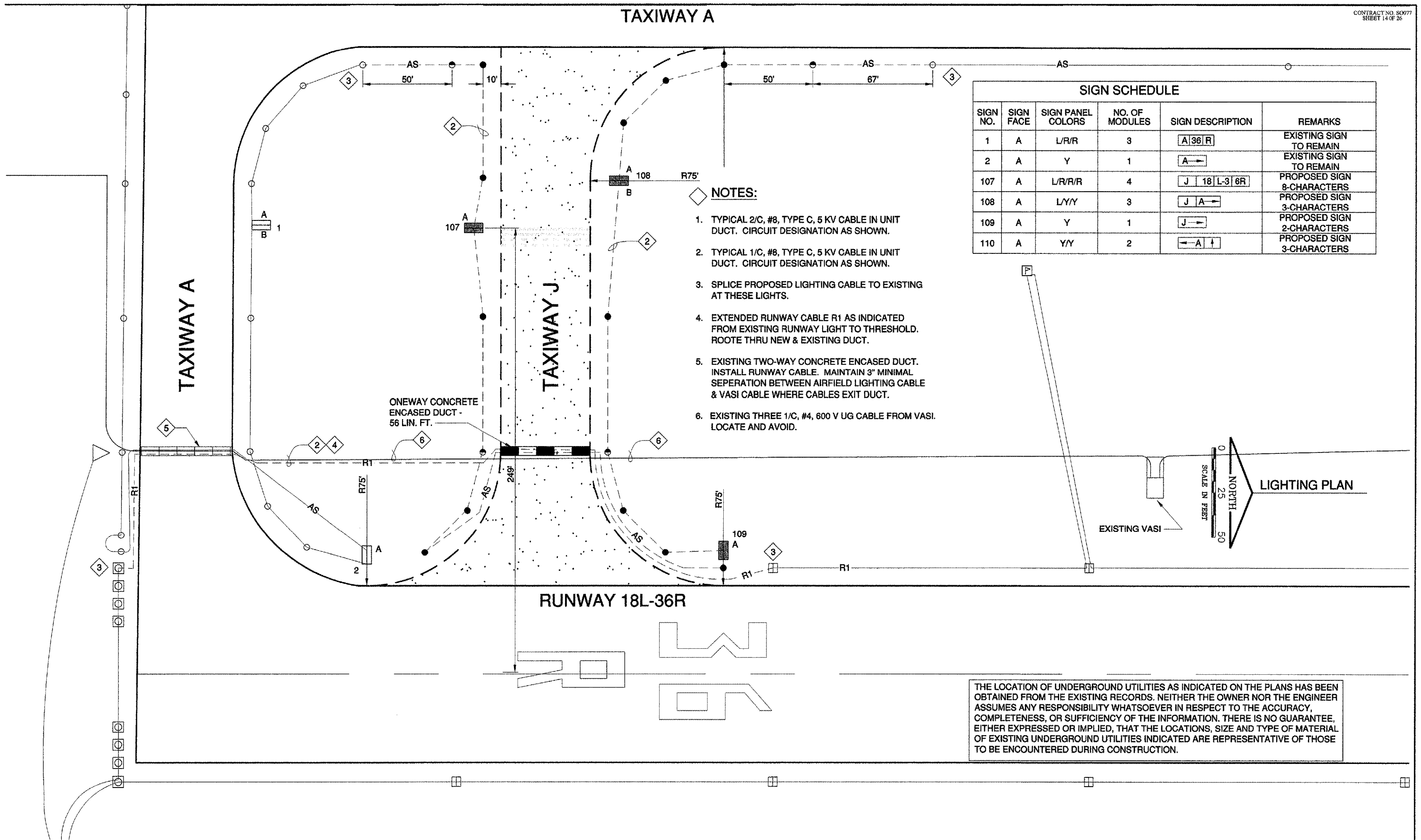


TAXIWAY A



SIGN SCHEDULE					
SIGN NO.	SIGN FACE	SIGN PANEL COLORS	NO. OF MODULES	SIGN DESCRIPTION	REMARKS
1	A	L/R/R	3	A 36 R	EXISTING SIGN TO REMAIN
2	A	Y	1	A →	EXISTING SIGN TO REMAIN
107	A	L/R/R/R	4	J 18 L-3 6R	PROPOSED SIGN 8-CHARACTERS
108	A	L/Y/Y	3	J A →	PROPOSED SIGN 3-CHARACTERS
109	A	Y	1	J →	PROPOSED SIGN 2-CHARACTERS
110	A	Y/Y	2	← A ↑	PROPOSED SIGN 3-CHARACTERS

- NOTES:**
1. TYPICAL 2/C, #8, TYPE C, 5 KV CABLE IN UNIT DUCT. CIRCUIT DESIGNATION AS SHOWN.
 2. TYPICAL 1/C, #8, TYPE C, 5 KV CABLE IN UNIT DUCT. CIRCUIT DESIGNATION AS SHOWN.
 3. SPLICE PROPOSED LIGHTING CABLE TO EXISTING AT THESE LIGHTS.
 4. EXTENDED RUNWAY CABLE R1 AS INDICATED FROM EXISTING RUNWAY LIGHT TO THRESHOLD. ROUTE THRU NEW & EXISTING DUCT.
 5. EXISTING TWO-WAY CONCRETE ENCASED DUCT. INSTALL RUNWAY CABLE. MAINTAIN 3" MINIMAL SEPERATION BETWEEN AIRFIELD LIGHTING CABLE & VASI CABLE WHERE CABLES EXIT DUCT.
 6. EXISTING THREE 1/C, #4, 600 V UG CABLE FROM VASI. LOCATE AND AVOID.

THE LOCATION OF UNDERGROUND UTILITIES AS INDICATED ON THE PLANS HAS BEEN OBTAINED FROM THE EXISTING RECORDS. NEITHER THE OWNER NOR THE ENGINEER ASSUMES ANY RESPONSIBILITY WHATSOEVER IN RESPECT TO THE ACCURACY, COMPLETENESS, OR SUFFICIENCY OF THE INFORMATION. THERE IS NO GUARANTEE, EITHER EXPRESSED OR IMPLIED, THAT THE LOCATIONS, SIZE AND TYPE OF MATERIAL OF EXISTING UNDERGROUND UTILITIES INDICATED ARE REPRESENTATIVE OF THOSE TO BE ENCOUNTERED DURING CONSTRUCTION.