

SCOPE OF WORK

THIS PROJECT CONSISTS OF THE CONSTRUCTION OF A 270' X 60' CONCRETE AIRCRAFT APRON FOR ACCESS TO FUTURE CORPORATE/F.B.O. HANGARS. INCLUDED WILL BE PAVEMENT REMOVAL, UNCLASSIFIED EXCAVATION, DRAINAGE, OVERSIZED AGGREGATE, AGGREGATE BASE COURSE, P.C. CONCRETE, MARKING, SEEDING AND MULCHING.

EROSION CONTROL

THIS PROJECT WILL DISTURB MORE THAN 1 ACRE OF LAND, THEREFORE A N.P.D.E.S. PERMIT WILL BE REQUIRED.

AIRPORT SECURITY NOTE

AIRPORT SECURITY WILL BE MAINTAINED AT ALL TIMES. THE CONTRACTOR WILL CLOSE AND LOCK ANY EXISTING GATES TO THE CONSTRUCTION AREA AT THE END OF EACH WORKING DAY.

UTILITY NOTE

THE CONTRACTOR SHALL CONTACT ALL UTILITY COMPANIES, F.A.A. AND AGENCIES WHICH HAVE LINES OR CONDUITS IN THE PROPOSED WORK AREA. ALL LINES AND CONDUITS SHALL BE LOCATED AND IDENTIFIED FOR DEPTH BEFORE ANY EXCAVATION BEGINS. THE CONTRACTOR WILL CALL J.U.L.I.E. (1-800-892-0123) TO ACCOMPLISH THE ABOVE. IT IS THE CONTRACTOR'S RESPONSIBILITY TO IDENTIFY ALL UNDERGROUND NON-JULIE UTILITIES LOCATED WITHIN THE PROPOSED CONSTRUCTION LIMITS. THESE UNDERGROUND UTILITIES WILL BE LOCATED AT THE CONTRACTOR'S OWN EXPENSE PRIOR TO THE START OF CONSTRUCTION.

HEIGHT OF CONSTRUCTION EQUIPMENT

THE EXPECTED MAXIMUM HEIGHT OF CONSTRUCTION EQUIPMENT IS 25 FEET. THE TALLEST EQUIPMENT IS EXPECTED TO BE A DUMP TRUCK.

EQUIPMENT PARKING AND STORAGE AREA

THE CONTRACTOR WILL USE THE DESIGNATED EQUIPMENT PARKING AND STORAGE AREA AS SHOWN ON THIS SHEET. THE CONTRACTOR WILL BE REQUIRED TO MAINTAIN THE PROPOSED EQUIPMENT PARKING AND STORAGE AREA THROUGHOUT THE COURSE OF THE PROJECT. ANY PROPERTY DAMAGED OUTSIDE OF THESE DESIGNATED AREAS WILL BE REPAIRED BY THE CONTRACTOR AND AT THE CONTRACTOR'S OWN EXPENSE. AT THE CONCLUSION OF THE PROJECT THE CONTRACTOR WILL RESTORE THE EQUIPMENT PARKING AND STORAGE AREA TO ITS ORIGINAL STATE. RESTORATION OF THE EQUIPMENT PARKING AND STORAGE AREA WILL BE CONSIDERED INCIDENTAL TO THE PROJECT AND NO ADDITIONAL COMPENSATION WILL BE ALLOWED.

CONTRACTOR RESPONSIBILITIES

THE CONTRACTOR'S EQUIPMENT PARKING AND STORAGE AREA WILL BE LOCATED AS SHOWN ON THIS SHEET. THE CONTRACTOR'S EMPLOYEES WILL PARK THEIR PERSONAL VEHICLES IN THIS AREA. ONLY CONTRACTOR VEHICLES NEEDED FOR CONSTRUCTION WILL BE ALLOWED OUTSIDE OF THE EQUIPMENT PARKING AREA.

THE CONTRACTOR AND HIS EMPLOYEES WILL BE RESTRICTED TO THE WORK AREA. ALL OTHER AREAS OF THE AIRPORT ARE "OFF LIMITS".

PROPOSED SAFETY PLAN

GENERAL - THE ST. LOUIS REGIONAL AIRPORT IS COMPRISED OF TWO RUNWAYS. THE PROPOSED CONSTRUCTION WILL NOT NECESSITATE CLOSING ANY RUNWAYS.

IDENTIFICATION - WHEN THE CONTRACTOR'S VEHICLES AND EQUIPMENT ARE ON AIRPORT PROPERTY, THEY SHALL BE PROPERLY MARKED WITH THREE (3') FOOT SQUARE CHECKERED FLAGS (INTERNATIONAL ORANGE AND WHITE). THE CONTRACTOR WILL ALSO PROVIDE WORKERS WITH SOME TYPE OF TAG OR GARMENT TO IDENTIFY THEM AS PART OF THE CONSTRUCTION CREW.

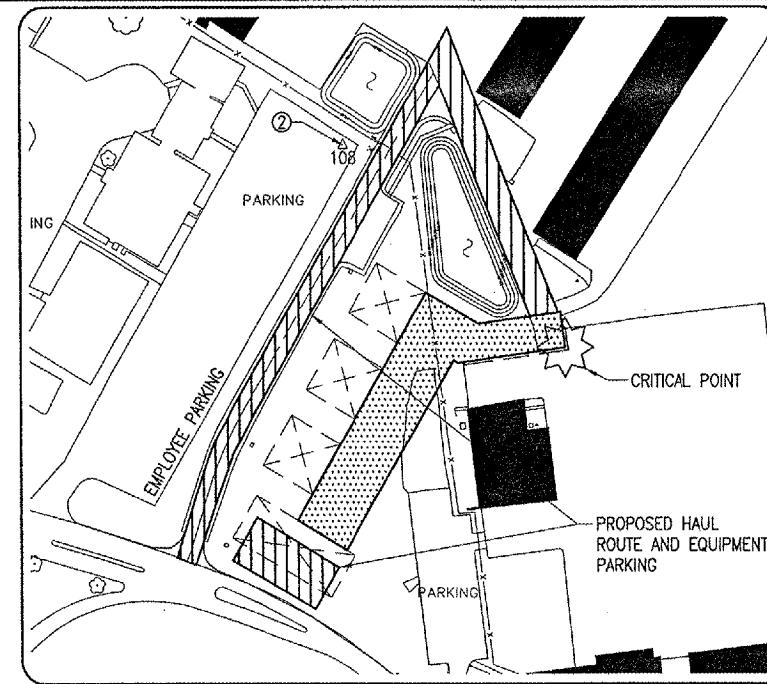
RADIO CONTROL - THE CONTRACTOR WILL BE REQUIRED TO BE IN TWO-WAY RADIO CONTACT (120.20 MHZ.) WITH THE AIRPORT TOWER. THIS WILL KEEP THE CONTRACTOR IN CONSTANT CONTACT WITH THE ST. LOUIS REGIONAL AIRPORT'S AIR TRAFFIC CONTROL (ATC) TOWER AND ENABLE THE ATC TOWER TO IMMEDIATELY CONTACT THE CONTRACTOR IN CASE OF AN AERONAUTICAL EMERGENCY THAT WOULD REQUIRE ACTION BY THE CONTRACTOR AND/OR HIS PERSONNEL.

BARRICADES AND TRAFFIC CONES

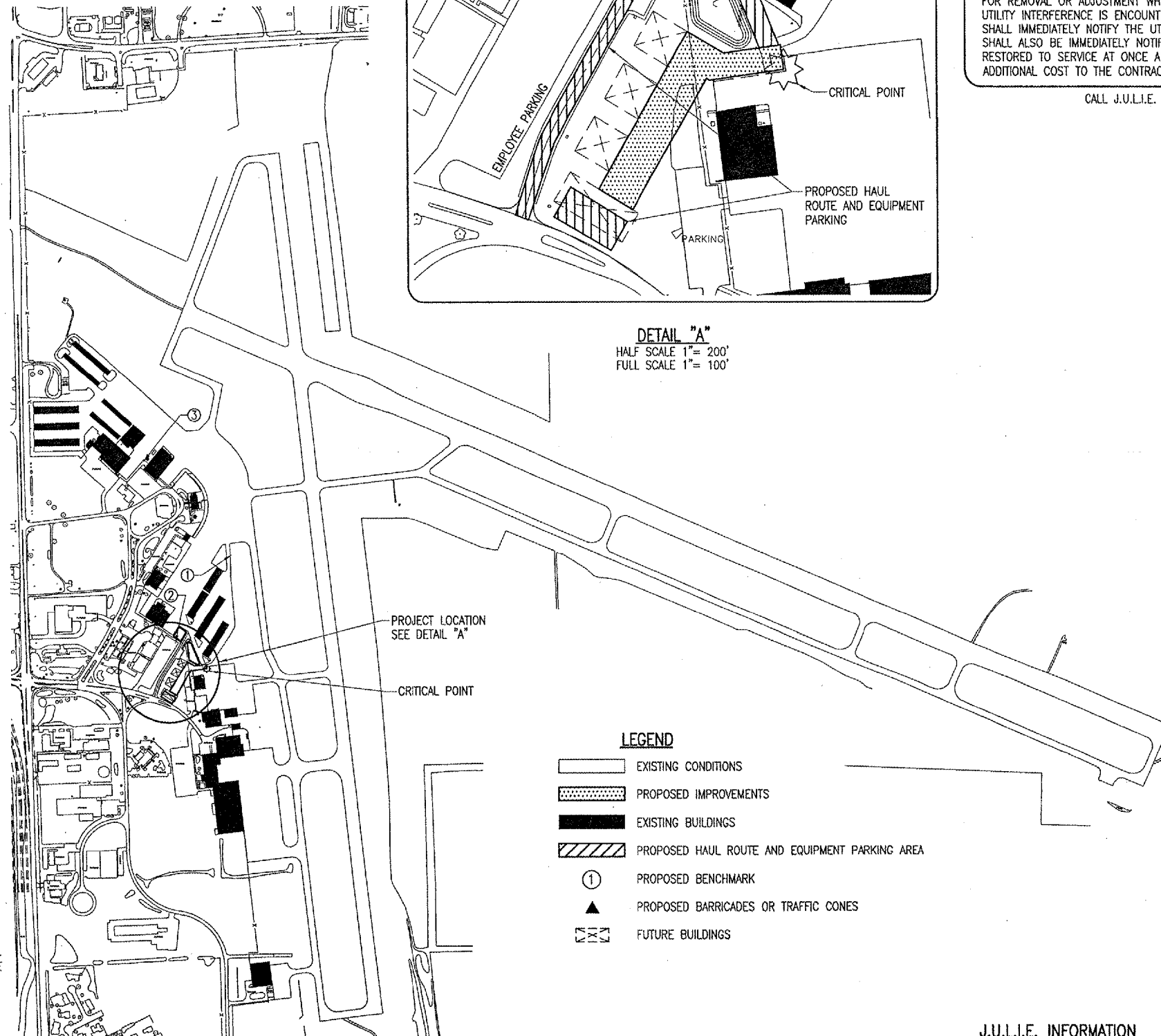
IT WILL BE THE CONTRACTOR'S RESPONSIBILITY TO PLACE AND MAINTAIN BARRICADES AND TRAFFIC CONES AS DIRECTED BY THE AIRPORT MANAGER. THE BARRICADES WILL BE EQUIPPED WITH RED FLASHING OR STEADY BURN LIGHTS AND 20" SQUARE ORANGE FLAGS. THE BARRICADES, THEIR MAINTENANCE, PLACEMENT AND REMOVAL WILL BE CONSIDERED AS AN INCIDENTAL ITEM TO THE CONTRACT AND NO ADDITIONAL COMPENSATION WILL BE ALLOWED.

ENGINEER'S FIELD OFFICE

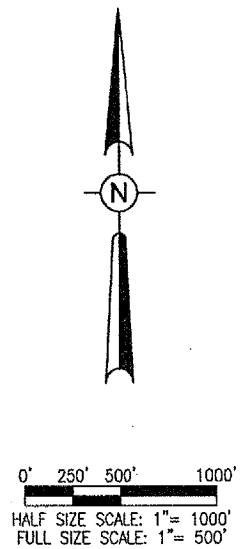
THE LOCATION OF THE ENGINEER'S FIELD OFFICE WILL BE DETERMINED AT THE PRECONSTRUCTION MEETING.



DETAIL "A"
HALF SCALE 1" = 200'
FULL SCALE 1" = 100'



- LEGEND**
- [Solid line] EXISTING CONDITIONS
 - [Dotted pattern] PROPOSED IMPROVEMENTS
 - [Solid black] EXISTING BUILDINGS
 - [Hatched pattern] PROPOSED HAUL ROUTE AND EQUIPMENT PARKING AREA
 - [Circle with 1] PROPOSED BENCHMARK
 - [Triangle] PROPOSED BARRICADES OR TRAFFIC CONES
 - [Dashed line] FUTURE BUILDINGS



THE LOCATION, SIZE AND TYPE OF MATERIAL OF EXISTING UNDERGROUND UTILITIES INDICATED ON THE PLANS IS NOT REPRESENTED AS BEING ACCURATE, SUFFICIENT OR COMPLETE. IT SHALL BE THE CONTRACTOR'S RESPONSIBILITY TO DETERMINE THE ACTUAL LOCATION OF ALL SUCH FACILITIES, INCLUDING SERVICE CONNECTIONS TO UNDERGROUND UTILITIES. PRIOR TO CONSTRUCTION, THE CONTRACTOR SHALL NOTIFY THE UTILITY COMPANIES OF HIS OPERATIONAL PLANS AND SHALL OBTAIN FROM THE RESPECTIVE UTILITY COMPANIES DETAILED INFORMATION AND ASSISTANCE RELATIVE TO THE LOCATION OF THEIR FACILITIES AND THE WORKING SCHEDULE OF THE COMPANIES FOR REMOVAL OR ADJUSTMENT WHERE REQUIRED. IN THE EVENT AN UNEXPECTED UTILITY INTERFERENCE IS ENCOUNTERED DURING CONSTRUCTION, THE CONTRACTOR SHALL IMMEDIATELY NOTIFY THE UTILITY COMPANY OF JURISDICTION. THE ENGINEER SHALL ALSO BE IMMEDIATELY NOTIFIED. ANY SUCH MAINS AND SERVICES SHALL BE RESTORED TO SERVICE AT ONCE AND PAID FOR BY THE CONTRACTOR AT NO ADDITIONAL COST TO THE CONTRACT.

CALL J.U.L.I.E. FOR UTILITY INFORMATION AT 1-800-892-0123.

BENCHMARK DATA -- 88 DATUM		
NO.	DESCRIPTION	ELEV.
1	CHISELED "□" FOUNDATION N.W. CORNER OF HANGAR #12	540.40
2	MAG NAIL IN ASPHALT	541.72
3	N.E. BOLT OF BEACON	539.88

CRITICAL POINT DATA	
LATITUDE	- 38° 53' 16.292"
LONGITUDE	- 90° 03' 15.628"
ELEVATION	- 543.33'

J.U.L.I.E. INFORMATION

COUNTY MADISON
 CITY BETHALTO
 TOWNSHIP ALTON - WOODRIVER
 SECTION NO. 13 AND 18
 ADDRESS ST. LOUIS REGIONAL AIRPORT
 8 TERMINAL DRIVE
 EAST ALTON, ILLINOIS 62024

	ST. LOUIS REGIONAL AIRPORT EAST ALTON, ILLINOIS ILL. PROJ.: ALN-3348	SR084 REVISION DATE
HANSON Hanson Professional Services Inc. 1525 South Sixth Street Springfield, Illinois 62703-2886 Offices Nationwide	PROJECT NO. 83706APND_0240 DRAWING R-003SAF.DWG SCALE 1" = 500' DATE 04/14/06 LAYOUT JAC 04/14/06 DRAWN BAK 04/14/06 REVIEWED CAH 05/17/06	CONSTRUCT AIRCRAFT PARKING APRON PROPOSED SAFETY PLAN
3		
3 of 28 sheets		

JUN 29, 2006 1:08 PM CAH
 I:\AIRPORTS\STLOUIS\837-06APND\AIRPORT_SHEETS\R-003SAF.DWG - Safety Plan