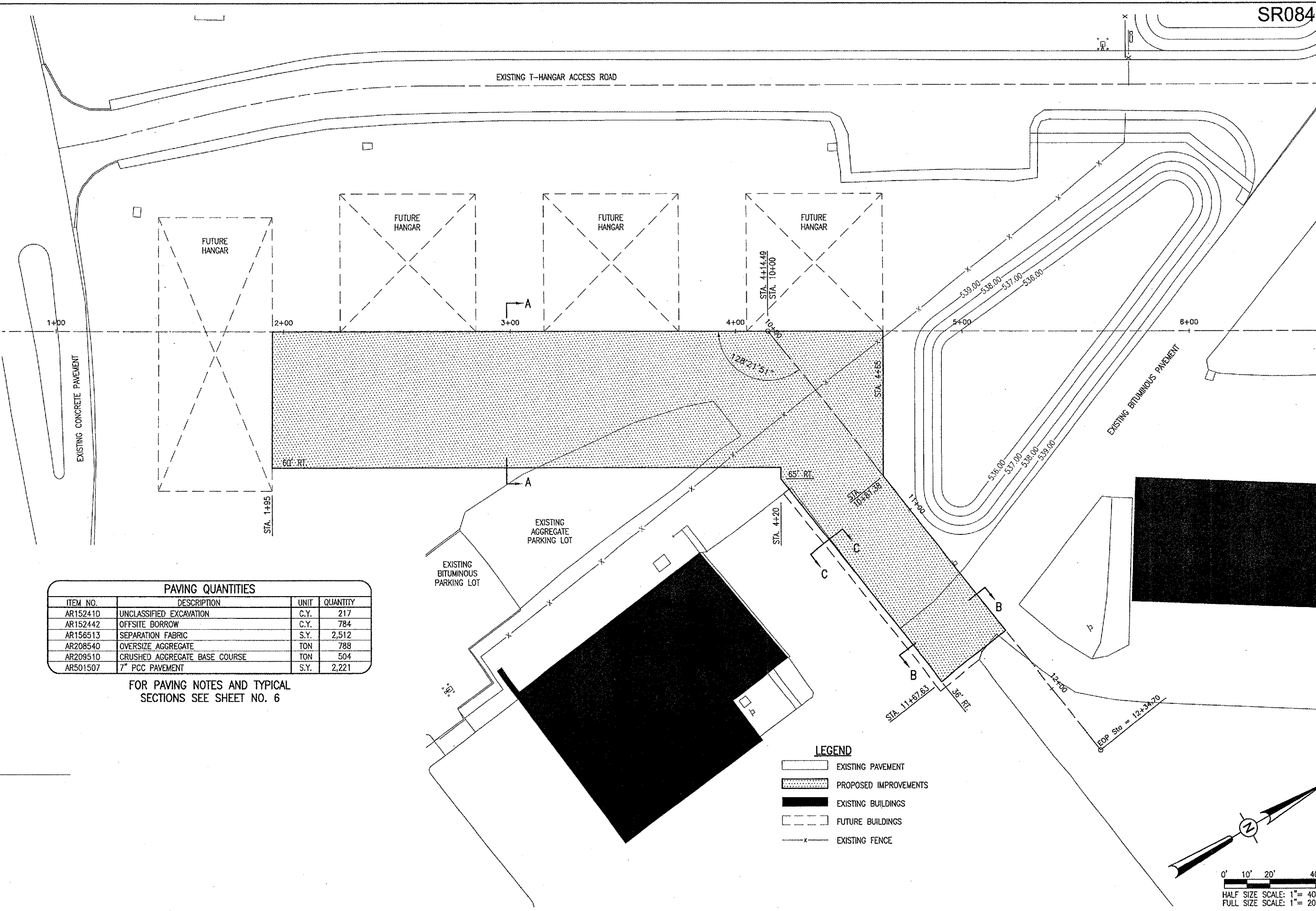


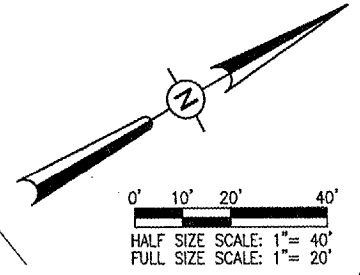
EXISTING T-HANGAR ACCESS ROAD



PAVING QUANTITIES			
ITEM NO.	DESCRIPTION	UNIT	QUANTITY
AR152410	UNCLASSIFIED EXCAVATION	C.Y.	217
AR152442	OFFSITE BORROW	C.Y.	784
AR156513	SEPARATION FABRIC	S.Y.	2,512
AR208540	OVERSIZE AGGREGATE	TON	788
AR209510	CRUSHED AGGREGATE BASE COURSE	TON	504
AR501507	7" PCC PAVEMENT	S.Y.	2,221

FOR PAVING NOTES AND TYPICAL SECTIONS SEE SHEET NO. 6

- LEGEND**
- EXISTING PAVEMENT
 - PROPOSED IMPROVEMENTS
 - EXISTING BUILDINGS
 - FUTURE BUILDINGS
 - EXISTING FENCE



DATE	REVISION	BY

ST. LOUIS REGIONAL AIRPORT
 EAST ALTON, ILLINOIS
 ILL. PROJ.: ALN-3348

Proj. No. 83708APND.0240	Drawn by JAC	Date 04/14/06
Plan No. R-121CON.DWG	Drawn by BAK	Date 04/14/06
Scale 1"=20'	Reviewed by CAH	Date 05/17/06

HANSON
 Hanson Professional Services Inc.
 1525 South Sixth Street
 Springfield, Illinois 62703-2886
 Offices Nationwide

CONSTRUCT AIRCRAFT PARKING APRON
 PROPOSED CONSTRUCTION PLAN