

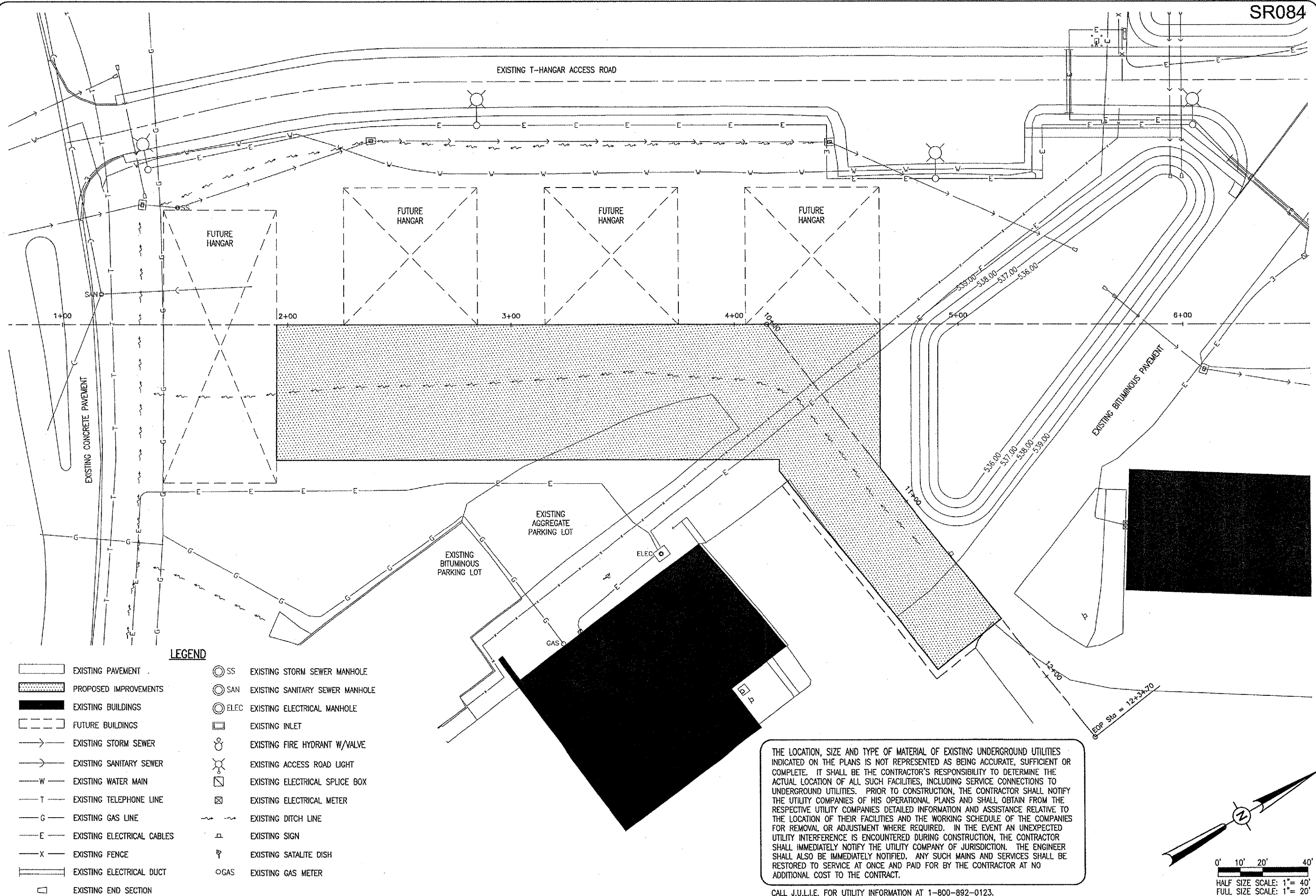
DATE	REVISION	BY

ST. LOUIS REGIONAL AIRPORT
St. Louis Regional Airport
 EAST ALTON, ILLINOIS
 IL PROJ.: ALN-3348

IEE Project No. 83706/AMND_0240	
Revision R-14 IELE.DWG	
Scale 1"=20'	
Date 04/14/06	
LAYOUT JAC 04/14/06	
DRAWN BAK 04/14/06	
REVIEWED CAH 05/17/06	

HANSON
 Hanson Professional Services Inc.
 1525 South Sixth Street
 Springfield, Illinois 62705-2886
 Offices Nationwide

CONSTRUCT AIRCRAFT
 PARKING APRON
 EXISTING
 UTILITY
 PLAN



- LEGEND**
- EXISTING PAVEMENT
 - PROPOSED IMPROVEMENTS
 - EXISTING BUILDINGS
 - FUTURE BUILDINGS
 - EXISTING STORM SEWER
 - EXISTING SANITARY SEWER
 - EXISTING WATER MAIN
 - EXISTING TELEPHONE LINE
 - EXISTING GAS LINE
 - EXISTING ELECTRICAL CABLES
 - EXISTING FENCE
 - EXISTING ELECTRICAL DUCT
 - EXISTING END SECTION
 - SS EXISTING STORM SEWER MANHOLE
 - SAN EXISTING SANITARY SEWER MANHOLE
 - ELEC EXISTING ELECTRICAL MANHOLE
 - EXISTING INLET
 - EXISTING FIRE HYDRANT W/VALVE
 - EXISTING ACCESS ROAD LIGHT
 - EXISTING ELECTRICAL SPLICE BOX
 - EXISTING ELECTRICAL METER
 - EXISTING DITCH LINE
 - EXISTING SIGN
 - EXISTING SATELLITE DISH
 - GAS EXISTING GAS METER

THE LOCATION, SIZE AND TYPE OF MATERIAL OF EXISTING UNDERGROUND UTILITIES INDICATED ON THE PLANS IS NOT REPRESENTED AS BEING ACCURATE, SUFFICIENT OR COMPLETE. IT SHALL BE THE CONTRACTOR'S RESPONSIBILITY TO DETERMINE THE ACTUAL LOCATION OF ALL SUCH FACILITIES, INCLUDING SERVICE CONNECTIONS TO UNDERGROUND UTILITIES. PRIOR TO CONSTRUCTION, THE CONTRACTOR SHALL NOTIFY THE UTILITY COMPANIES OF HIS OPERATIONAL PLANS AND SHALL OBTAIN FROM THE RESPECTIVE UTILITY COMPANIES DETAILED INFORMATION AND ASSISTANCE RELATIVE TO THE LOCATION OF THEIR FACILITIES AND THE WORKING SCHEDULE OF THE COMPANIES FOR REMOVAL OR ADJUSTMENT WHERE REQUIRED. IN THE EVENT AN UNEXPECTED UTILITY INTERFERENCE IS ENCOUNTERED DURING CONSTRUCTION, THE CONTRACTOR SHALL IMMEDIATELY NOTIFY THE UTILITY COMPANY OF JURISDICTION. THE ENGINEER SHALL ALSO BE IMMEDIATELY NOTIFIED. ANY SUCH MAINS AND SERVICES SHALL BE RESTORED TO SERVICE AT ONCE AND PAID FOR BY THE CONTRACTOR AT NO ADDITIONAL COST TO THE CONTRACT.

CALL J.U.L.I.E. FOR UTILITY INFORMATION AT 1-800-892-0123.

