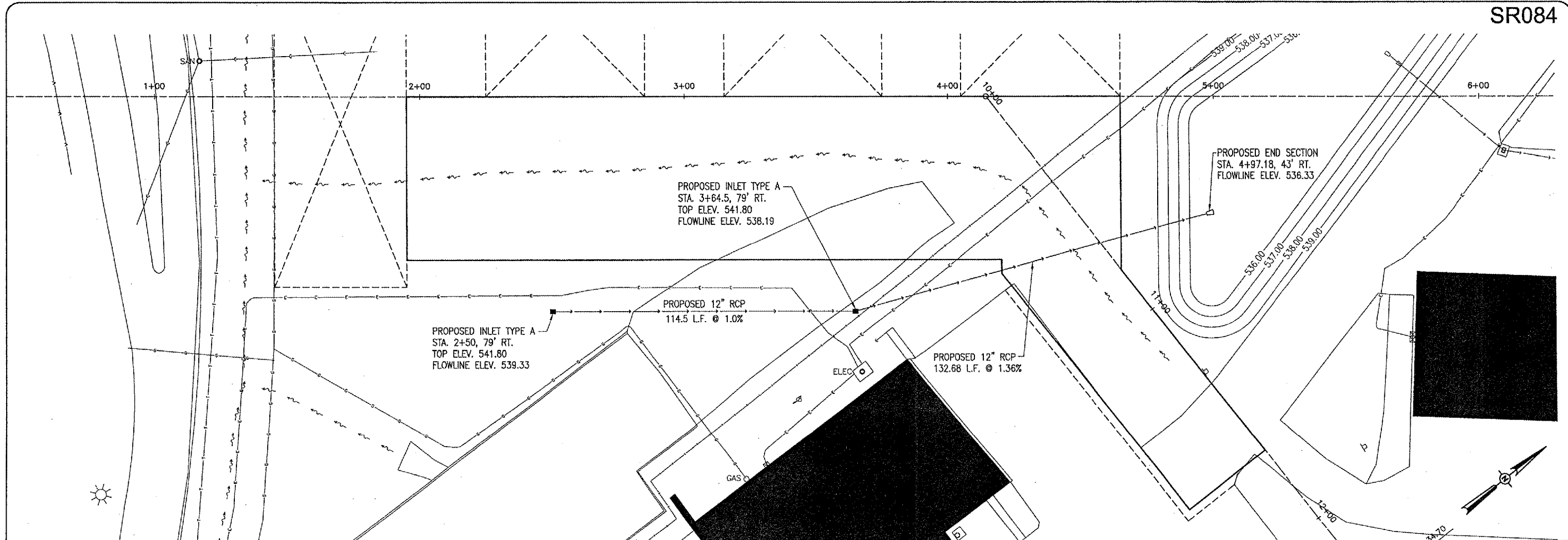


JUN 29, 2006 1:32 PM CAH
 E:\AIRPORTS\STLOUIS\337-06APND\AIRPORT SHEETS\R-701-SANS.DWG - Layout1



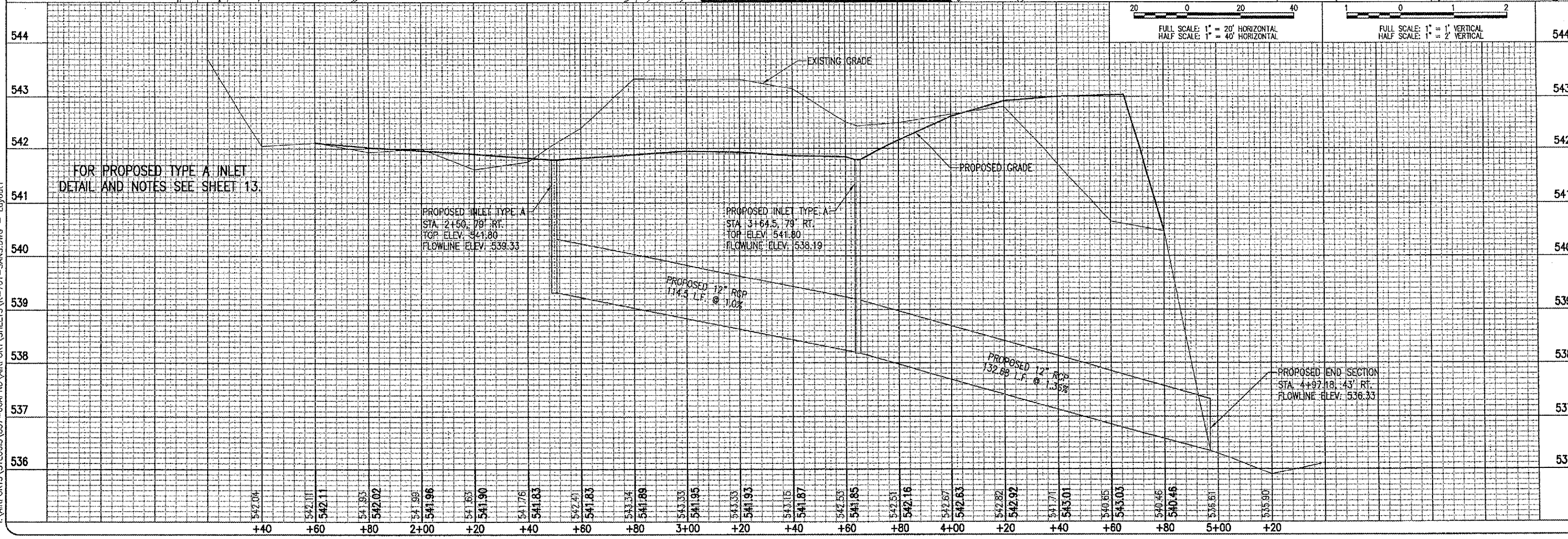
SR084

REVISION	DATE	BY

ST. LOUIS REGIONAL AIRPORT

 EAST ALTON, ILLINOIS
 IL PROJ.: ALN-3348

HEB Project No. 83706APND.0240	JAC	04/14/06
Filename: R-701-SANS.DWG	JEO	04/14/06
Scale: H. 1" = 20' V. 1" = 2'	CAH	05/17/06
Date: 04/14/06		



20 0 20 40
 FULL SCALE: 1" = 20' HORIZONTAL
 HALF SCALE: 1" = 40' HORIZONTAL

1 0 1 2
 FULL SCALE: 1" = 1' VERTICAL
 HALF SCALE: 1" = 2' VERTICAL

HANSON
 Hanson Professional Services Inc.
 1525 South Sixth Street
 Springfield, Illinois 62703-2886
 Offices Nationwide

CONSTRUCT AIRCRAFT
 PARKING APRON
 PROPOSED STORM SEWER
 PLAN AND PROFILE
 STA. 2+50 TO STA. 4+97.18