

620-PAVEMENT MARKING-WATERBORNE NOTES

THE PAVEMENT MARKING-WATERBORNE (620) SHALL BE PLACED IN ACCORDANCE WITH ITEM 620 "PAVEMENT MARKING" AS STATED ON PAGE 77 OF THE SUPPLEMENTAL SPECIFICATIONS AND RECURRING SPECIAL PROVISIONS, ADOPTED JULY 1, 2004.

THIS ITEM SHALL CONSIST OF PAVEMENT MARKING IN ACCORDANCE WITH THESE SPECIFICATIONS AND AT THE LOCATIONS SHOWN ON THE CONSTRUCTION PLANS. ALL MARKING WILL BE YELLOW IN COLOR WITH A BLACK OUTLINE. THE PROPOSED PAVEMENT MARKING WILL BE APPLIED IN TWO APPLICATIONS.

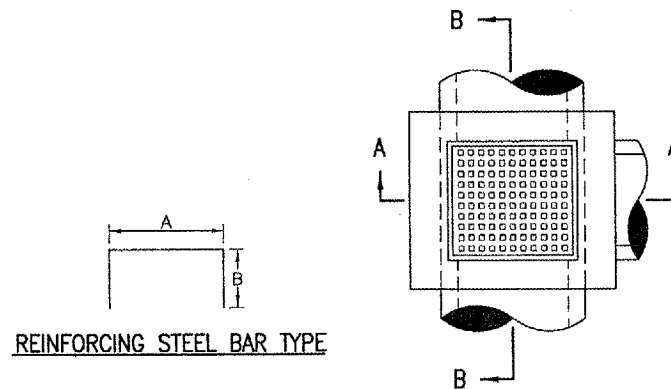
ANY MATERIAL DELIVERED THAT FAILS TO MEET THE SPECIFICATIONS SHALL BE DISPOSED OF BY THE VENDOR AND IMMEDIATELY REPLACED WITH ACCEPTABLE MATERIAL ENTIRELY AT THE VENDOR'S EXPENSE, INCLUDING HANDLING AND TRANSPORTATION CHARGES.

ALL PROPOSED MARKING WILL BE COMPLETED IN ACCORDANCE WITH THE DETAILS SHOWN ON THE CONSTRUCTION PLANS.

GLASS BEADS SHALL BE REQUIRED ONLY ON THE SECOND APPLICATION.

CUT-OFF SHEETS WILL BE REQUIRED TO INSURE STRAIGHT EDGES.

THE PROPOSED MARKING WILL BE PAID FOR UNDER ITEM:
AR620520 PAVEMENT MARKING-WATERBORNE ____ 126 S.F.



REINFORCING STEEL BAR TYPE

REINFORCING BARS SCHEDULE					
TYPE	QUANTITY PER INLET	DIMENSIONS		SIZE	APPROX. WT. OF BARS IN INLET
		A	B		
A	2	3'-4"	2'-4"	#5	16.7

INLET NOTES

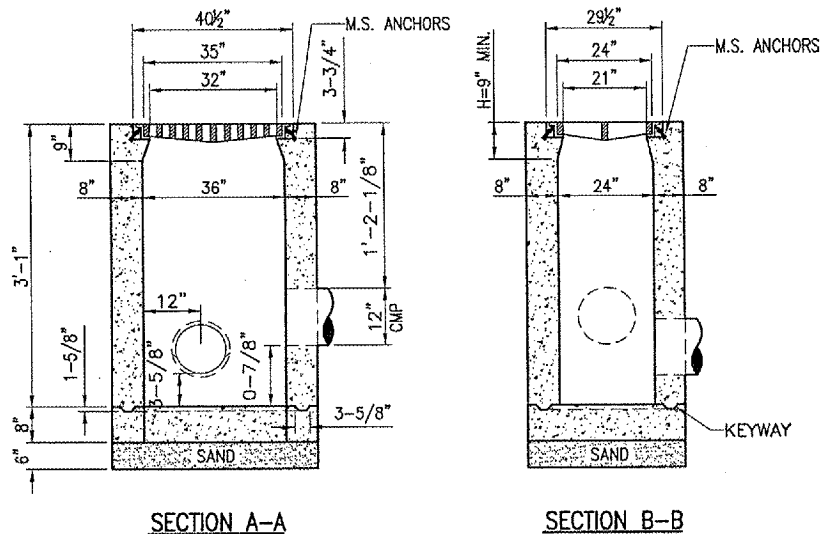
INLET TO BE CONSTRUCTED OF STRUCTURAL P.C. CONCRETE. THE CONTRACT UNIT PRICE PER INLET SHALL INCLUDE THE FRAME, GRATE AND STEPS IN PLACE AND COMPLETE PER UNIT.

1/2" CHAMFER TO BE USED ON ALL EXPOSED CORNERS OF INLETS. BARS TO BE INSTALLED 2" FROM FACE OF WALLS.

THE FRAME AND GRATE SHALL BE NEENAH R-3475-E, DEETER 2425-E.

"H" SHALL BE EQUAL TO THE PROPOSED PAVEMENT THICKNESS AND NOT LESS THAN THE ATTACHED MINIMUMS. TYPE A _____ 9" MINIMUM.

INLET STEPS SHALL BE NEENAH R-1980-1. 12" TO 15" C.C. STEPS TO BE INSTALLED WHEN Y IS GREATER THAN 5' COST. THE COST OF THE STEPS SHALL BE INCLUDED IN THE CONTRACT UNIT PRICE FOR EACH INLET.



FENCE REMOVAL NOTES

THE EXISTING FENCE TO BE REMOVED ARE SHOWN ON SHEET 12. THE CONTRACTOR WILL REMOVE THE GATES, FABRIC, BARBED WIRE, POSTS, ETC. AND DISPOSE OF ALL MATERIAL OFF THE AIRPORT SITE.

THE CONTRACTOR WILL FILL ALL HOLES (MADE FROM THE REMOVAL OF THE FENCE) WITH EARTH MATERIAL. THE EARTH MATERIAL WILL BE OBTAINED FROM THE AIRPORT CONSTRUCTION SITE. THE EARTH MATERIAL WILL BE COMPACTED TO PREVENT FUTURE SETTLEMENT.

THE PROPOSED FENCE REMOVAL WILL BE PAID FOR UNDER ITEM:
AR162900 "REMOVE CLASS E FENCE" ____ 216 LIN. FT.

BY	REVISION	DATE

ST. LOUIS REGIONAL AIRPORT

 EAST ALTON, ILLINOIS
 ILL. PROJ.: ALN-3348

Project No. 83706APND.0240	Scale: 1"=20'	Date: 04/14/06
File Name: R-151MRK.DWG	Drawn: JAC	Reviewed: CAH

HANSON
 Hanson Professional Services Inc.
 1525 South Sixth Street
 Springfield, Illinois 62703-2885
 Offices Nationwide

CONSTRUCT AIRCRAFT
 PARKING APRON
 PROPOSED
 MISCELLANEOUS
 DETAIL AND NOTES