

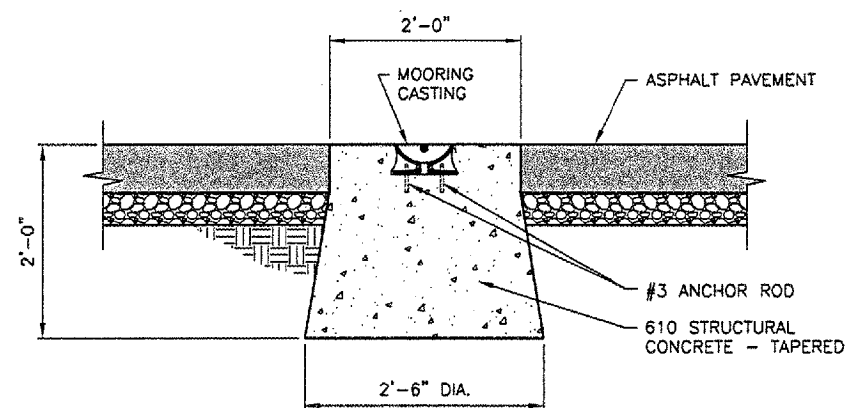
**MOORING NOTES**

1. MOORING CASTINGS SHALL BE NEENAH SEMI-STEEL AIRPORT MOORING EYE CATALOG NO. R3490 OR APPROVED EQUIVALENT.
2. ANCHOR RODS SHALL BE #3 DEFORMED REBAR, 15" LONG AND SHALL BE BENT DOWNWARD AT 45 DEGREES.

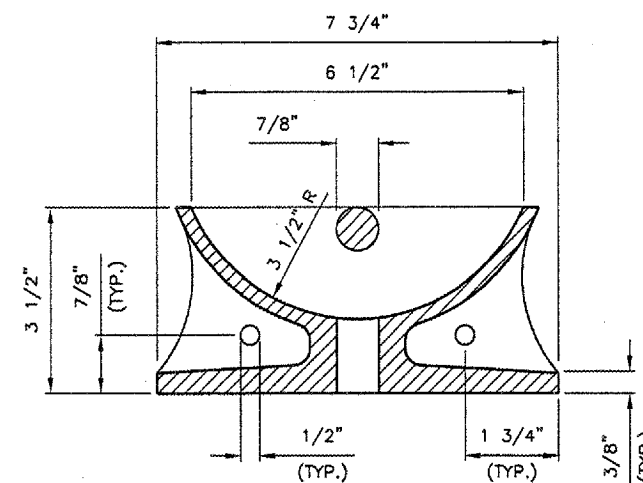
REVISIONS

NUMBER	BY	DATE

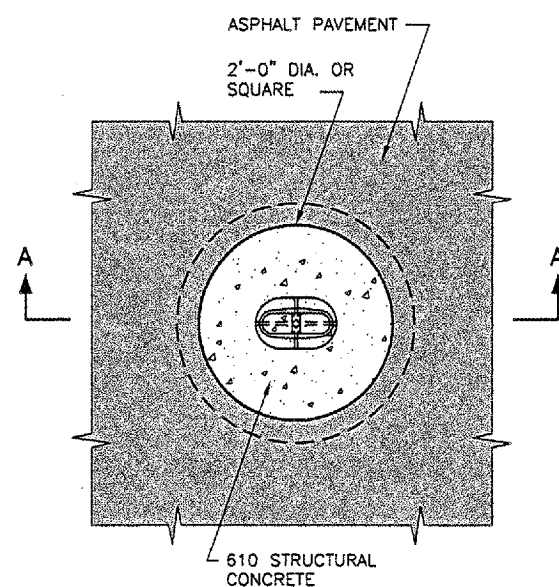
0 1 2  
 THIS BAR IS EQUAL TO 2" AT FULL SCALE (34X22).



SECTION A-A



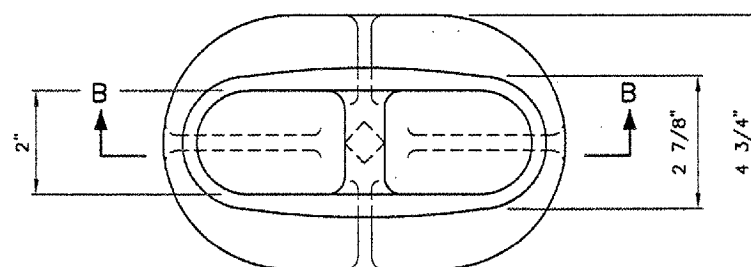
SECTION B-B



PLAN

MOORING EYE IN PAVEMENT DETAILS

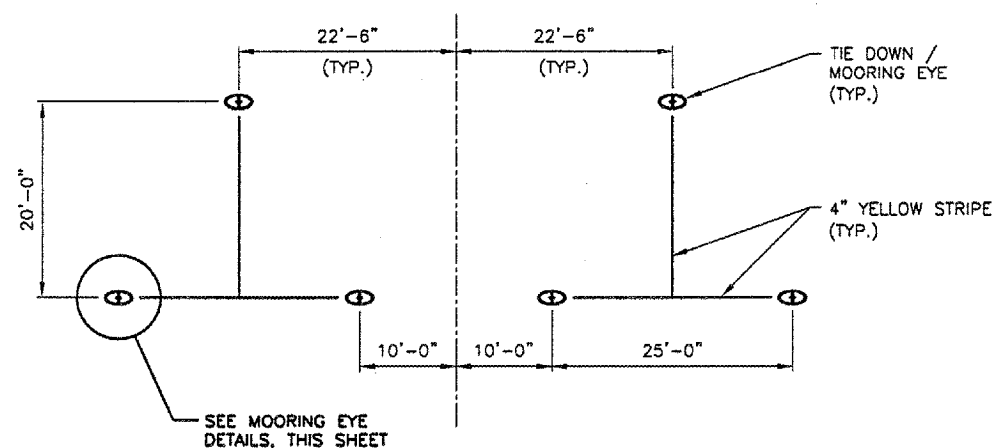
N.T.S.



PLAN

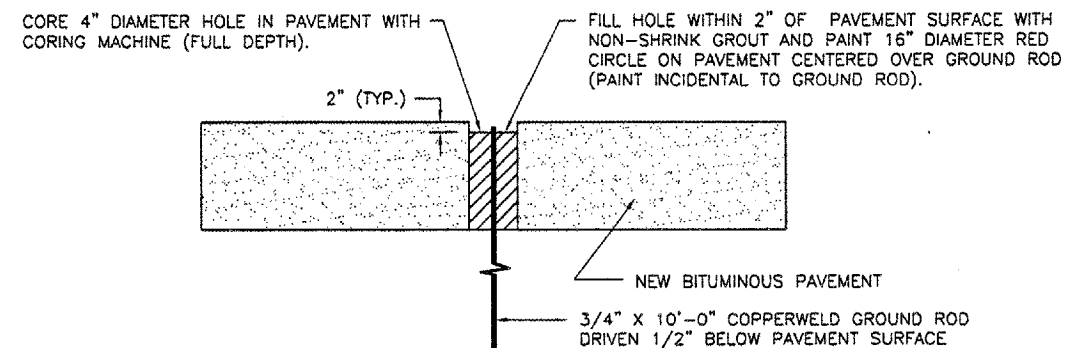
MOORING EYE DETAILS

N.T.S.



TIE DOWN LAYOUT

N.T.S.



GROUND ROD DETAIL

N.T.S.

**WILLARD AIRPORT**  
**UNIVERSITY OF ILLINOIS**  
**REHABILITATE GA/SCHOOL APRON**  
**MOORING EYE AND MISCELLANEOUS DETAILS**

© Copyright CMT, Inc.  
**CMT**  
 CRAWFORD, MURPHY & TILLY, INC.  
 CONSULTING ENGINEERS  
 License No. BR-000618

DESIGN BY:	JEF
DRAWN BY:	CMT
CHECKED BY:	SMH
APPROVED BY:	JEF
DATE:	06/09/2006
JOB No:	0605902
IL PROJ. NO.	CMI-3589
AIP PROJ. NO.	3-17-00XX-XX
SHEET	15 OF 16 SHEETS