

CODE NO.	ITEM	UNIT	TOTAL QUANTITY	CONSTRUCTION CODE							
				ROADWAY		TRAFFIC SIGNAL				WATERMAIN	LIGHTING
				0004		0021				0043	0021
FED 90% STATE 10%	PARKING CITY OF LOCKPORT 100%	FED 90% STATE 10%	DECORATIVE CITY OF LOCKPORT 100%	INTERCONNECT FED 90% STATE 10%	EVP CITY OF LOCKPORT 100%	CITY OF LOCKPORT 100%	CITY OF LOCKPORT 100%				
60603800	COMBINATION CONCRETE CRUB AND GUTTER, TYPE B-6.12	FOOT	2001	1574						427	
60604400	COMBINATION CONCRETE CRUB AND GUTTER, TYPE B-6.18	FOOT	149	149							
60605000	COMBINATION CONCRETE CURB AND GUTTER, TYPE B-6.24	FOOT	39	39							
66900200	NON-SPECIAL WASTE DISPOSAL	CU YD	1100	1100							
66900450	SPECIAL WASTE PLANS AND REPORTS	LSUM	1	1							
66900530	SOIL DISPOSAL ANALYSIS	EACH	6	6							
67000400	ENGINEER'S FIELD OFFICE, TYPE A	CAL MO	6	6							
67100100	MOBILIZATION	LSUM	1	1							
70102620	TRAFFIC CONTROL AND PROTECTION, STANDARD 701501	LSUM	1	1							
70102622	TRAFFIC CONTROL AND PROTECTION, STANDARD 701502	LSUM	1	1							
70102625	TRAFFIC CONTROL AND PROTECTION, STANDARD 701606	LSUM	1	1							
70102632	TRAFFIC CONTROL AND PROTECTION, STANDARD 701602	LSUM	1	1							
70102634	TRAFFIC CONTROL AND PROTECTION, STANDARD 701611	LSUM	1	1							
70102635	TRAFFIC CONTROL AND PROTECTION, STANDARD 701701	LSUM	1	1							
70102640	TRAFFIC CONTROL AND PROTECTION, STANDARD 701801	LSUM	1	1							

* SPECIALITY ITEMS

AES AES Services Inc.
111 S. Wacker Drive, Suite 3910
Chicago, IL 60606
Ph: 312-235-6783

USER NAME - tzeahamed	DESIGNED - AWM	REVISED -
DRAWN - TOM	REVISOR -	
CHECKED - JA	REVISOR -	
DATE - 3/20/2017	REVISOR -	

STATE OF ILLINOIS
DEPARTMENT OF TRANSPORTATION

IL 171 (STATE ST.) & IL 7 (9TH ST.) IMPROVEMENTS
SUMMARY OF QUANTITIES - 7 OF 16

SCALE SHEET OF SHEETS STA. TO STA.

F.A.P. RTE. 571	SECTION D-EXT-N	COUNTY WILL	TOTAL SHEETS 140	SHEET NO. 10
				CONTRACT NO. 62C09

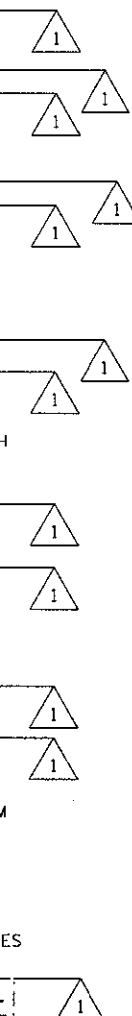
REV 7-25-17

P:\60606005-64-PTB177-004_SUP4-IL 7 & IL 171_Improvements_IL171\01\ICAD\015\Sheet\10_62C09-INT-9007.dgn

14

GENERAL NOTES

1. THE CONTRACTOR SHALL MAINTAIN A MINIMUM 22' CLEAR WIDTH ROADWAY FOR TWO-WAY TRAFFIC FLOW AND A MINIMUM 11' WIDE LEFT TURN LANE AT LOCATIONS SHOWN THROUGHOUT THE DURATION OF THE CONTRACT. INGRESS AND EGRESS TO DRIVEWAYS AND SIDE STREETS SHALL BE MAINTAINED AS SHOWN ON THE PLANS AND/OR AS DIRECTED BY THE ENGINEER.
2. _____
3. THE ENGINEER SHALL BE INFORMED 48 HOURS IN ADVANCE OF BEGINNING STAGE I AND II.
4. _____
5. THE CONTRACTOR SHALL BE REQUIRED TO REMOVE ALL EXISTING PAVEMENT MARKINGS WHICH CONFLICT WITH THE DESIGNATED TRAFFIC CONTROL PLAN. THIS WORK SHALL BE PAID FOR AS PAVEMENT MARKING REMOVAL - WATER BLAST.
6. _____
7. ALL ACCESS SHALL BE MAINTAINED TO THE RESIDENTIAL APARTMENTS AND BUSINESS UNITS AND DRIVEWAYS AT ALL TIMES. SEE VAULT CONSTRUCTION NOTES ON SHT 103 & 104.
8. ON STREET PARKING SHALL BE PROHIBITED BETWEEN 8TH AND 10TH STREET ON IL 171 DURING STAGE I AND STAGE II CONSTRUCTION. COORDINATE WITH THE CITY OF LOCKPORT IN ADVANCE.
9. _____
10. PAVEMENT MARKINGS PLACED IN THE WORK ZONE BY THE CONTRACTOR WHICH LATER CONFLICT WITH THE DESIGNATED TRAFFIC CONTROL PLAN SHALL BE REMOVED. THIS WORK SHALL BE PAID AS "TEMPORARY PAVEMENT MARKING REMOVAL".
11. _____
12. _____
13. ELEVATION DIFFERENCE FOR ALL ACCESS POINT BETWEEN THE TEMPORARY PAVEMENT AND ACCESS SHALL BE FILLED WITH HOT-MIX ASPHALT BINDER COURSE, IL-19.0, N50. SUFFICIENT QUANTITY IS ADDED FOR THIS SITUATION
14. _____
15. _____
16. THE CONTRACTOR SHALL CONTACT THE TRAFFIC CONTROL SUPERVISOR AT (847)705-4470 A MINIMUM OF 72 HOURS PRIOR TO THE PLACEMENT OF ANY TEMPORARY TRAFFIC CONTROL DEVICES.
17. WHEN A GRADE CROSSING EXISTS EITHER WITHIN OR IN THE VICINITY OF A TEMPORARY TRAFFIC CONTROL ZONE, LANE RESTRICTIONS, FLAGGING (SEE CHAPTER 6E OF MUTCD, 2009), OR OTHER OPERATIONS SHALL NOT BE PERFORMED IN A MANNER THAT WOULD CAUSE HIGHWAY VEHICLES TO STOP ON THE RAILROAD OR LRT TRACKS, UNLESS A FLAGGER OR UNIFORMED LAW ENFORCEMENT OFFICER IS PROVIDED AT THE GRADE CROSSING TO MINIMIZE THE POSSIBILITY OF HIGHWAY VEHICLES STOPPING ON THE TRACKS, EVEN IF AUTOMATIC WARNING DEVICES ARE IN PLACE.
18. USE CHANGEABLE MESSAGE SIGNS TWO WEEKS IN ADVANCE OF LANE CLOSURES AND STAGE CHANGES.

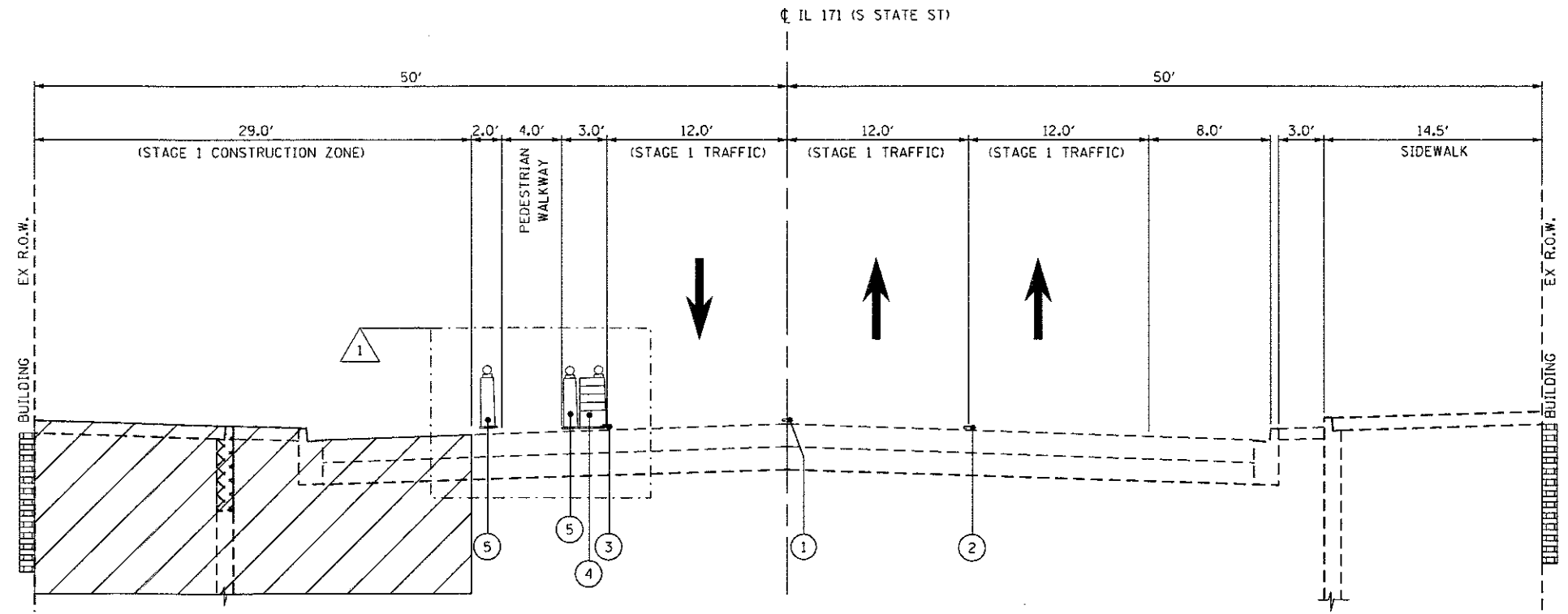


M.O.T STAGES CONSTRUCTION FOR ROADWAY ONLY

STAGES	CONSTRUCTION ACTIVITY	TRAFFIC PATTERN
PRESTAGE	ON STREET PARKING TO BE PROHIBITED BETWEEN 8TH AND 10TH STREET ON IL 171. ALL CONFLICTING EXISTING PAVEMENT MARKING SHALL BE REMOVED AND TEMPORARY PAVEMENT MARKING ARE PLACED ACCORDING TO PLAN SHEETS. ALL CONFLICTING EXISTING TRAFFIC SIGNS SHALL BE COVERED OR REMOVED AS DIRECTED BY THE ENGINEER. ALL ACCESS SHALL BE MAINTAINED TO THE RESIDENTIAL APARTMENTS AND BUSINESS UNITS AT ALL TIMES. INSTALL TEMPORARY SIGNS, TEMPORARY LIGHTING AND TEMPORARY TRAFFIC SIGNALS FOR STAGE I AND TEMPORARY CONSTRUCTION FENCE AT LOCATIONS.	EXISTING IL 171 ROAD AND NO SIDE PARKING. COORDINATE PARKING RESTRICTIONS WITH CITY OF LOCKPORT
STAGE I	IL 171 FROM 123+47.00 TO STA. 132+50.00 WEST SIDE OF IL 171 FILL THE VAULTED SIDEWALKS, CONSTRUCT WATERMAIN, REPLACE THE SIDEWALKS, AND CONSTRUCT THE NEW 8' WIDE PARKING LANE WITH THE CURB AND GUTTER. COORDINATE WITH CITY OF LOCKPORT FOR EXISTING DECORATIVE LIGHT POLE REMOVAL BY THE CITY OF LOCKPORT. INSTALL TEMPORARY SIGNS FOR STAGE II.	EXISTING IL 171 ROAD AND SIDE PARKING. FOLLOW TEMPORARY PAVEMENT MARKING PATTERN AS SHOWN M.O.T PLAN SHEET 39.
STAGE II	IL 171 FROM 123+47.00 TO STA. 132+50.00 EAST SIDE OF IL 171 FILL THE VAULTED SIDEWALKS, CONSTRUCT WATERMAIN, REPLACE THE SIDEWALKS, AND CONSTRUCT THE NEW 8' WIDE PARKING LANE WITH THE CURB AND GUTTER. COORDINATE WITH CITY OF LOCKPORT FOR EXISTING DECORATIVE LIGHT POLE REMOVAL BY THE CITY OF LOCKPORT.	EXISTING IL 171 ROAD AND SIDE PARKING FOLLOW TEMPORARY PAVEMENT MARKING PATTERN AS SHOWN M.O.T PLAN SHEET 41.
STAGE III	IL 171 FROM 123+47.00 TO STA. 132+50.00 RESURFACING COORDINATE DECORATIVE LIGHT POLES INSTALLATION WITH CITY OF LOCKPORT REMOVE TEMPORARY LIGHTING REMOVE TEMPORARY TRAFFIC SIGNALS	

P:\606162005\04-PT1717-004-1004-11-7 & IL 171 Improvements\01CADD\02Sheet\36-62C09-INT-MOT-GENERAL.dgn

AES Services, Inc. 111 S. Wacker Drive, Suite 3910 Chicago, IL 60606 Ph: 312-23-6783	USER NAME = amohamed	DESIGNED - AWM	REVISED - 07/24/2017 JA	STATE OF ILLINOIS DEPARTMENT OF TRANSPORTATION	IL 171 (STATE ST.) & IL 7 (9 TH ST.) IMPROVEMENTS IL - 171 SUGGESTED MOT GENERAL NOTES	F.A.P. RTE. 577	SECTION D-EXT-N	COUNTY WILL	TOTAL SHEETS 140	SHEET NO. 36
	PLOT SCALE = 1/8" = 1'-0"	CHECKED - JA	REVISED -			CONTRACT NO. 62C09				
	PLOT DATE = 7/25/2017	DATE - 3/20/2017	REVISED -			ILLINOIS FED. AID PROJECT				



LEGEND

- ① EXISTING PAVEMENT MARKING (DOUBLE YELLOW LINE)
- ② EXISTING PAVEMENT MARKING (DASH LINE)
- ③ TEMPORARY PAVEMENT MARKING LINE - 4" (SOLID, WHITE)
- ④ TYPE II BARRICADE/DRUMS (SEE PLANS FOR LOCATION AND SPACING)
- ⑤ DETECTABLE PEDESTRIAN CHANNELIZING BARRICADE PER STANDARD 701801 & 701901

NOTES

1. INSTALL TEMPORARY CONSTRUCTION FENCE WITH SCREEN AT VAULTED SIDEWALK LOCATION TO BE FILLED PRIOR TO CONSTRUCTION.

MAINTENANCE OF TRAFFIC STAGE I

SOUTH OF IL 7 - LOOKING NORTH
 FROM STA. 124+40 TO STA. 127+65
 FROM STA. 128+50 TO STA. 131+65

P:\08\62C09\04-F1B177-004-W04-IL-7 & IL-171-Improvements\01CAD\008\Sheet\37_62C09-INT-MOT_Typical.dgn

AES Services, Inc.
 111 S. Wacker Drive, Suite 3910
 Chicago, IL 60606
 Ph: 312-23-8783

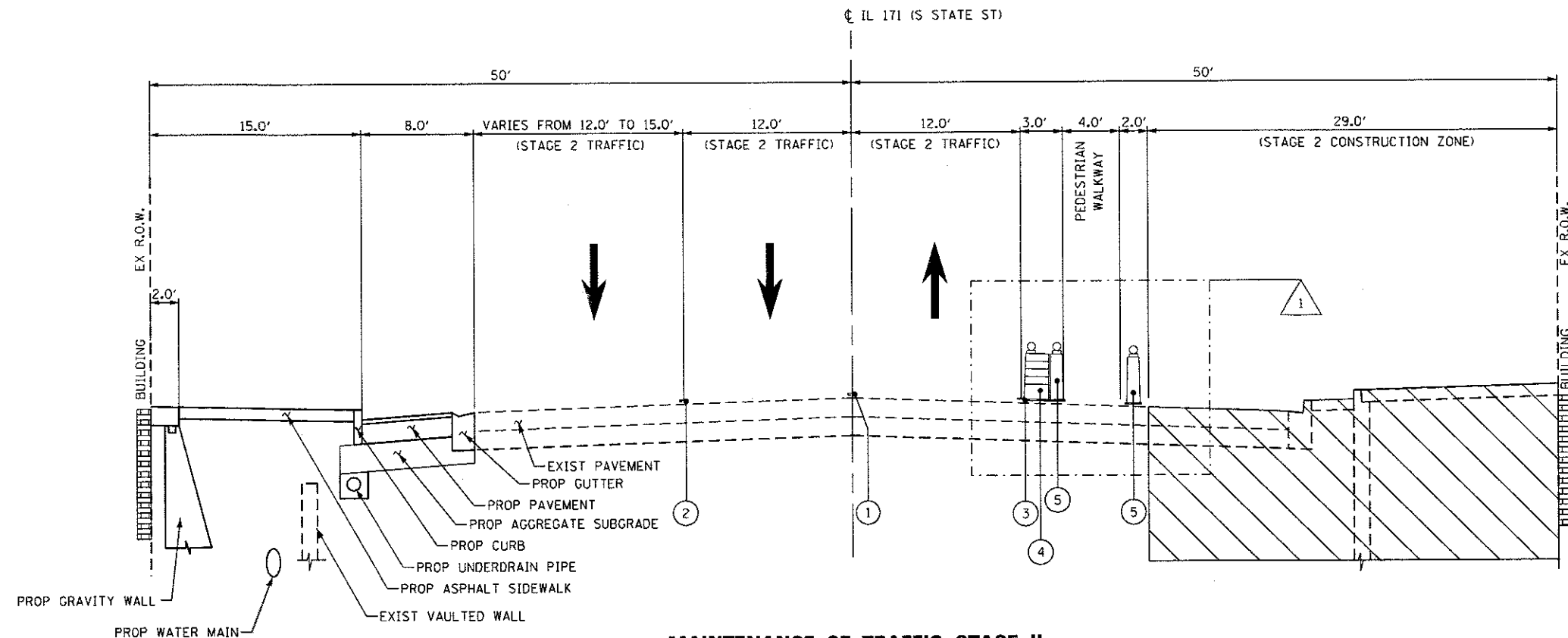
USER NAME = awehammad	DESIGNED - AWM	REVISED - 07/24/2017 JA
	DRAWN - TOM	REVISED -
PLOT SCALE = 10.0000' / 1" =	CHECKED - JA	REVISED -
PLOT DATE = 7/25/2017	DATE - 3/20/2017	REVISED -

STATE OF ILLINOIS
 DEPARTMENT OF TRANSPORTATION

IL 171 (STATE ST.) & IL 7 (9 TH ST.) IMPROVEMENTS		F.A.P. RTE.	SECTION	COUNTY	TOTAL SHEETS	SHEET NO.
IL-171 SUGGESTED MOT STAGE 1 TYPICAL SECTION		577	D-EXT-N	WILL	140	37
SCALE		SHEET OF SHEETS		STA. TO STA.		CONTRACT NO. 62C09

ILLINOIS	FED. AID PROJECT
----------	------------------

REV 7-25-17



MAINTENANCE OF TRAFFIC STAGE II

SOUTH OF IL 7 - LOOKING NORTH
 FROM STA. 124+41 TO STA. 127+58
 FROM STA. 128+44 TO STA. 131+65

LEGEND

- ① EXISTING PAVEMENT MARKING (DOUBLE YELLOW LINE)
- ② TEMPORARY PAVEMENT MARKING LINE - 4" (10' DASH, 30' SKIP, WHITE) (TYP.)
- ③ TEMPORARY PAVEMENT MARKING LINE - 4" (SOLID, WHITE)
- ④ TYPE II BARRICADE/DRUMS (SEE PLANS FOR LOCATION AND SPACING)
- ⑤ DETECTABLE PEDESTRIAN CHANNELIZING BARRICADE PER STANDARD 701801 & 701901

NOTES

- 1. INSTALL TEMPORARY CONSTRUCTION FENCE WITH SCREEN AT VAULTED SIDEWALK LOCATION TO BE FILLED PRIOR TO CONSTRUCTION.

P:\60516\025\04-PTB\17-004_HQ4-IL 7 & IL 171_Infrastructure_Improvement\01C\005\rev\138_622099-INT-MOT-stage2.dgn

AES Services, Inc.
 111 S. Wacker Drive, Suite 3910
 Chicago, IL 60606
 Ph: 312-23-6783

USER NAME = awmohammed	DESIGNED - AWM	REVISED - 07/24/2017 JA
	DRAWN - TOM	REVISED -
PLOT SCALE = 1/8" = 1'	CHECKED - JA	REVISED -
PLOT DATE = 7/25/2017	DATE - 3/20/2017	REVISED -

STATE OF ILLINOIS
DEPARTMENT OF TRANSPORTATION

IL 171 (STATE ST.) & IL 7 (9TH ST.) IMPROVEMENTS
IL-171 SUGGESTED MOT STAGE 2 TYPICAL SECTION

SCALE SHEET OF SHEETS STA. TO STA.

F.A.P. RTE.	SECTION	COUNTY	TOTAL SHEETS	SHEET NO.
577	D-EXT-N	WILL	140	38
CONTRACT NO. 62C09				
ILLINOIS FED. AID PROJECT				

REV 7-25-17

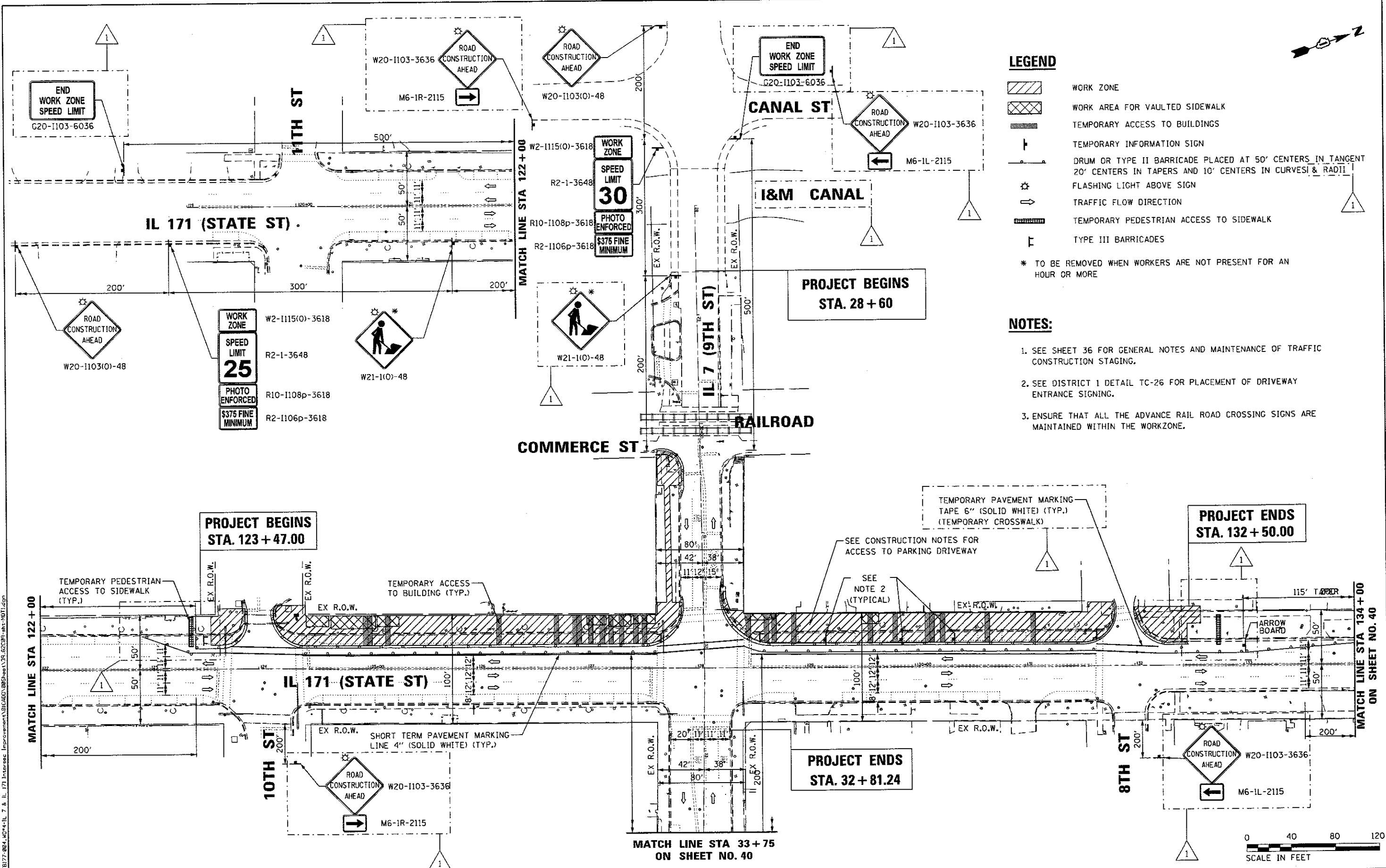


LEGEND

- WORK ZONE
 - WORK AREA FOR VAULTED SIDEWALK
 - TEMPORARY ACCESS TO BUILDINGS
 - TEMPORARY INFORMATION SIGN
 - DRUM OR TYPE II BARRICADE PLACED AT 50' CENTERS IN TANGENT 20' CENTERS IN TAPERS AND 10' CENTERS IN CURVES & RADII
 - FLASHING LIGHT ABOVE SIGN
 - TRAFFIC FLOW DIRECTION
 - TEMPORARY PEDESTRIAN ACCESS TO SIDEWALK
 - TYPE III BARRICADES
- * TO BE REMOVED WHEN WORKERS ARE NOT PRESENT FOR AN HOUR OR MORE

NOTES:

1. SEE SHEET 36 FOR GENERAL NOTES AND MAINTENANCE OF TRAFFIC CONSTRUCTION STAGING.
2. SEE DISTRICT 1 DETAIL TC-26 FOR PLACEMENT OF DRIVEWAY ENTRANCE SIGNING.
3. ENSURE THAT ALL THE ADVANCE RAIL ROAD CROSSING SIGNS ARE MAINTAINED WITHIN THE WORKZONE.



AES Services, Inc.
111 S. Wacker Drive, Suite 3910
Chicago, IL 60608
Ph: 312-23-5783

USER NAME = amchambers	DESIGNED - AWM	REVISED - 07/24/2017 JA
DRAWN - TOM	CHECKED - JA	REVISED -
PLT SCALE = 88.0001 1/4 in.	DATE - 3/20/2017	REVISED -
PLT DATE = 7/25/2017		

**STATE OF ILLINOIS
DEPARTMENT OF TRANSPORTATION**

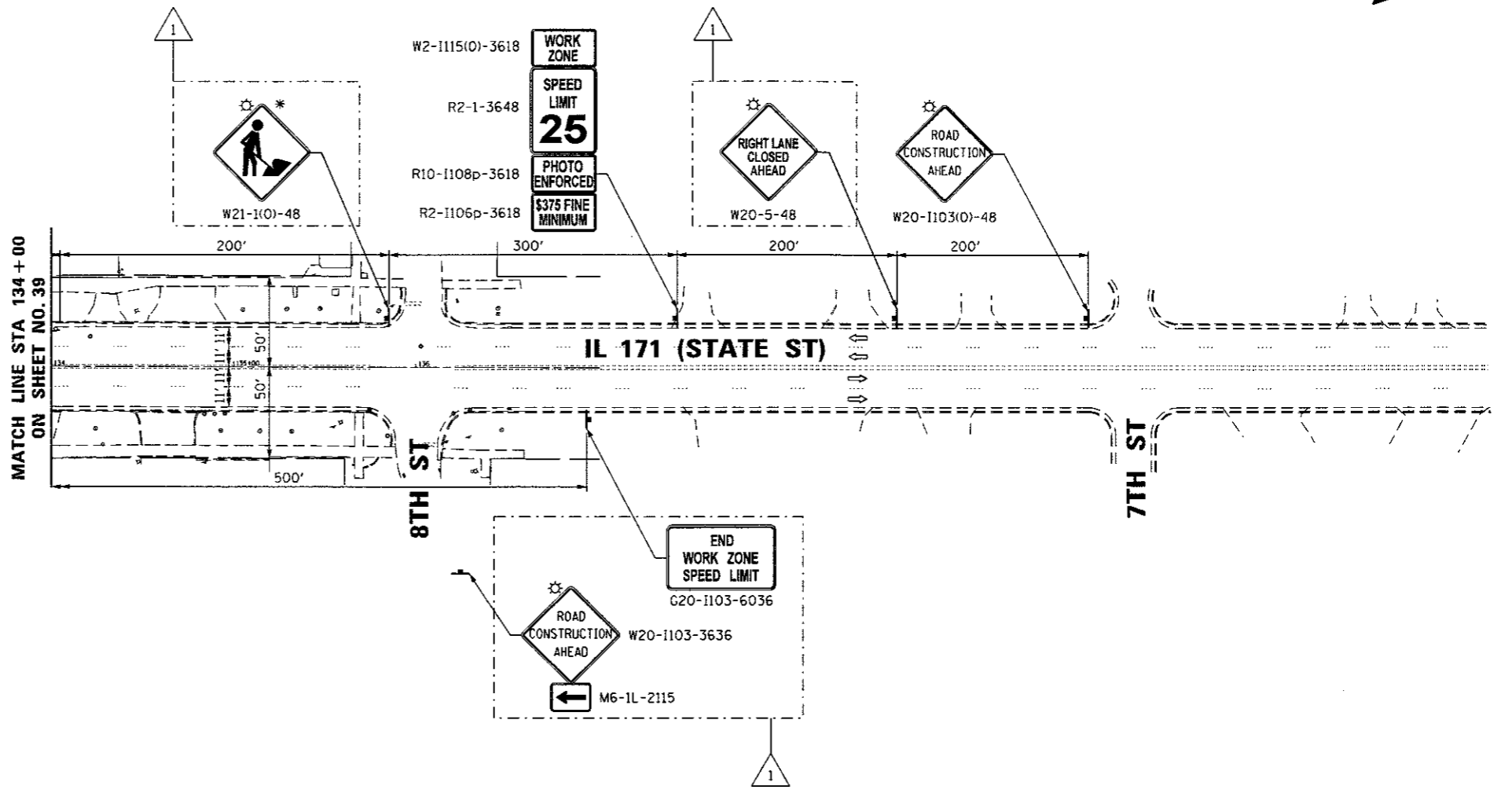
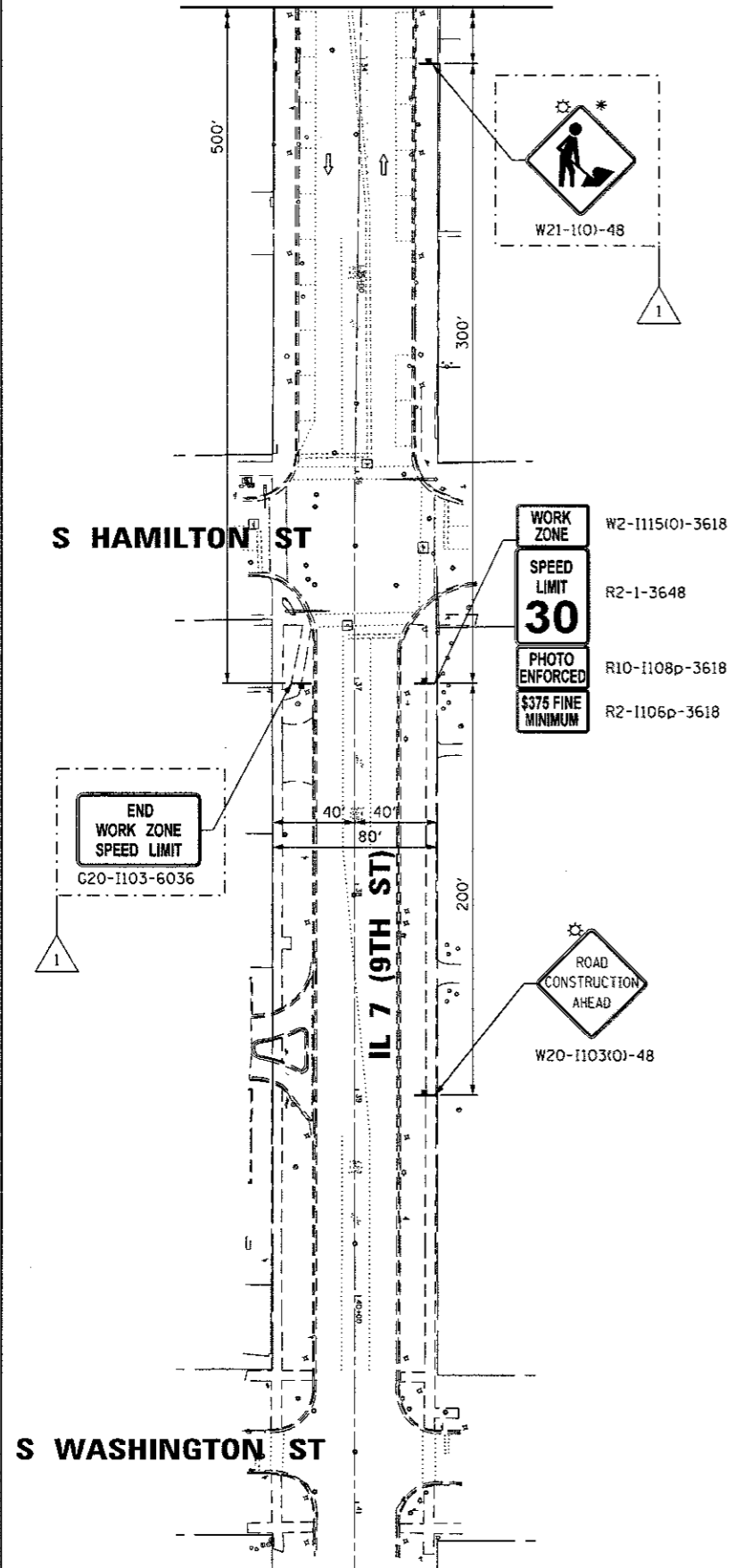
**IL 171 (STATE ST.) & IL 7 (9TH ST.) IMPROVEMENTS
SUGGESTED MOT STAGE 1**

SCALE SHEET OF SHEETS STA. TO STA.

F.A.P. RTE.	SECTION	COUNTY	TOTAL SHEETS	SHEET NO.
577	D-EXT-N	WILL	140	39
CONTRACT NO. 62C09			ILLINOIS FED. AID PROJECT	

REV 7-25-17

MATCH LINE STA 33+75
ON SHEET NO. 39



P:\GIS\GIS005-04-PTB\77-984-WD*-IL-7 & IL-171 Intersect. Improvement\UT\CADD\825Sheet\48_62C09-INT-1011.dwg



AES Services, Inc.
111 S. Wacker Drive, Suite 3910
Chicago, IL 60606
PH: 312-23-8783

USER NAME = swahammed	DESIGNED - AWM	REVISED - 07/24/2017 JA
PLOT SCALE = 80.0000' / in.	DRAWN - TOM	REVISED -
PLOT DATE = 7/25/2017	CHECKED - JA	REVISED -
	DATE - 3/20/2017	REVISED -

STATE OF ILLINOIS
DEPARTMENT OF TRANSPORTATION

IL 171 (STATE ST.) & IL 7 (9TH ST.) IMPROVEMENTS
SUGGESTED MAINTENANCE OF TRAFFIC STAGE 1

F.A.P. RTE. 577	SECTION D-EXT-N	COUNTY WILL	TOTAL SHEETS 140	SHEET NO. 40
CONTRACT NO. 62C09				
ILLINOIS FED. AID PROJECT				

REV 7-25-17



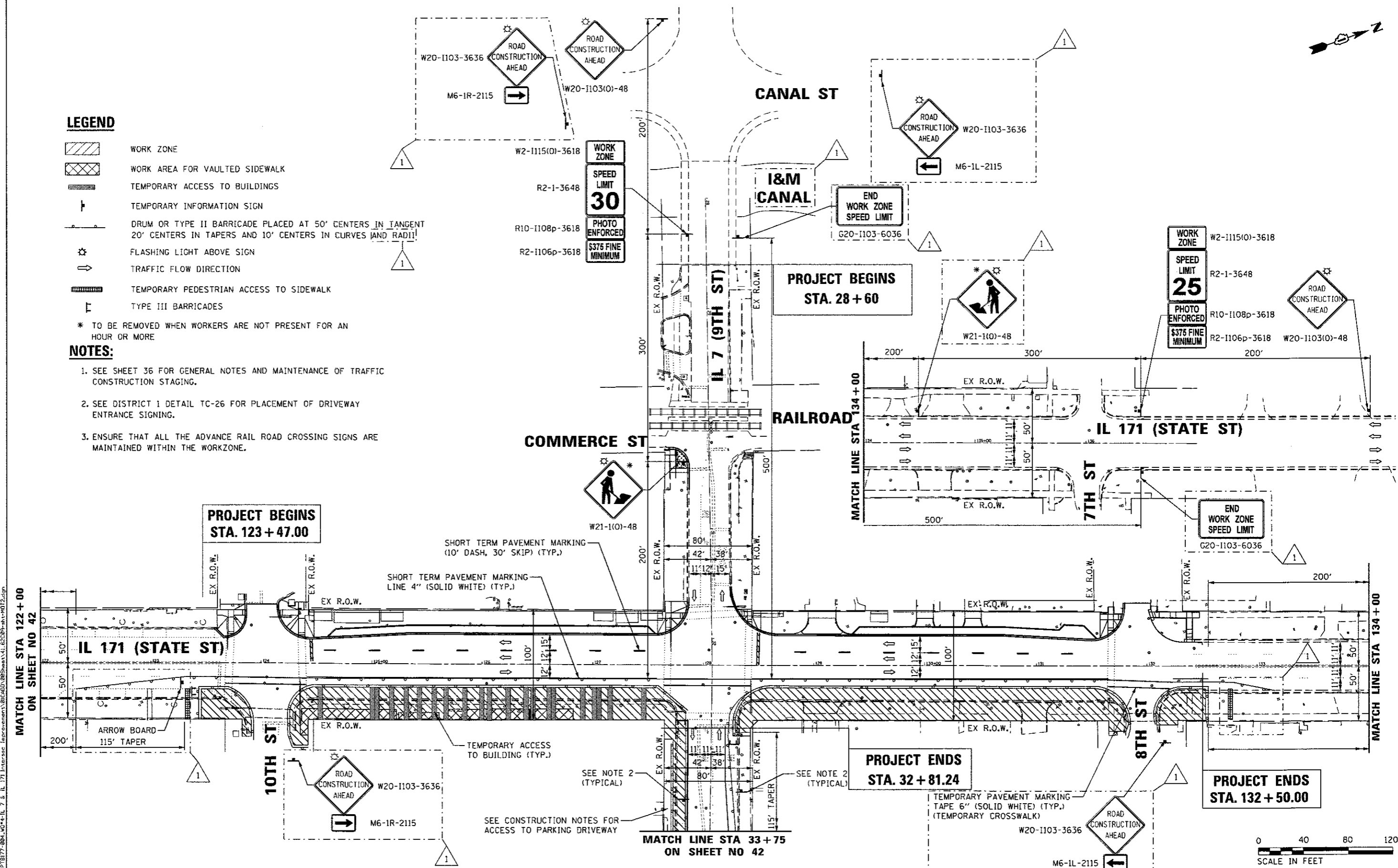
LEGEND

- WORK ZONE
- WORK AREA FOR VAULTED SIDEWALK
- TEMPORARY ACCESS TO BUILDINGS
- TEMPORARY INFORMATION SIGN
- DRUM OR TYPE II BARRICADE PLACED AT 50' CENTERS IN TANGENT 20' CENTERS IN TAPERS AND 10' CENTERS IN CURVES (AND RADII)
- FLASHING LIGHT ABOVE SIGN
- TRAFFIC FLOW DIRECTION
- TEMPORARY PEDESTRIAN ACCESS TO SIDEWALK
- TYPE III BARRICADES

* TO BE REMOVED WHEN WORKERS ARE NOT PRESENT FOR AN HOUR OR MORE

NOTES:

1. SEE SHEET 36 FOR GENERAL NOTES AND MAINTENANCE OF TRAFFIC CONSTRUCTION STAGING.
2. SEE DISTRICT 1 DETAIL TC-26 FOR PLACEMENT OF DRIVEWAY ENTRANCE SIGNING.
3. ENSURE THAT ALL THE ADVANCE RAIL ROAD CROSSING SIGNS ARE MAINTAINED WITHIN THE WORKZONE.



AES Services, Inc.
111 S. Wacker Drive, Suite 3910
Chicago, IL 60606
Ph: 312-23-6783

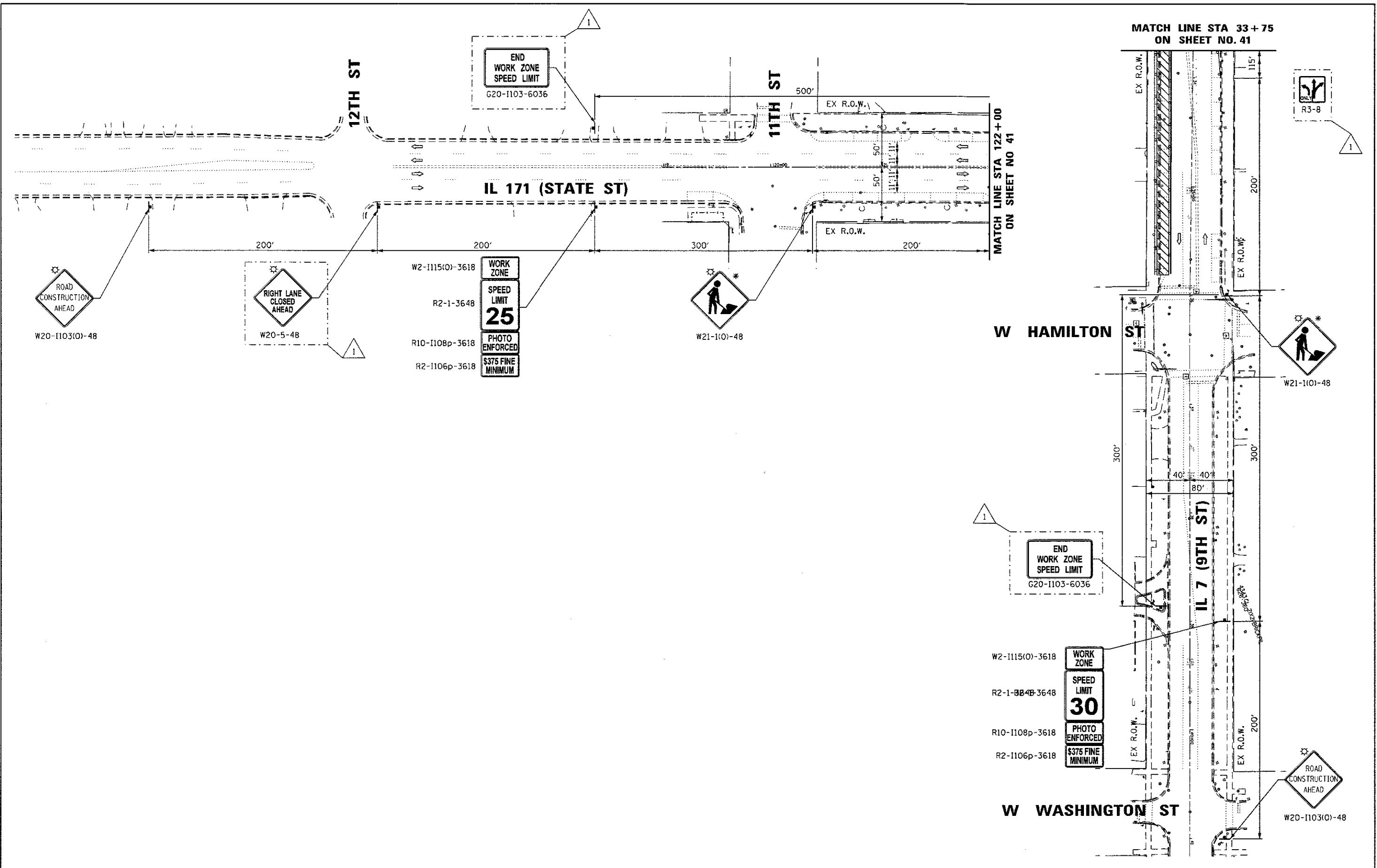
USER NAME = amohammed	DESIGNED - AWM	REVISED - 07/24/2017 JA
PLOT SCALE = 80.0001" / 1"	DRAWN - TOM	REVISED -
PLOT DATE = 7/25/2017	CHECKED - JA	REVISED -
	DATE - 3/20/2017	REVISED -

STATE OF ILLINOIS
DEPARTMENT OF TRANSPORTATION

IL 171 (STATE ST.) & IL 7 (9TH ST.) IMPROVEMENTS
SUGGESTED MOT STAGE 2

F.A.P. RTE. 577	SECTION D-EXT-N	COUNTY WILL	TOTAL SHEETS 140	SHEET NO. 41
SCALE SHEET OF SHEETS STA. TO STA.			CONTRACT NO. 62C09	
ILLINOIS FED. AID PROJECT				

REV 7-25-17



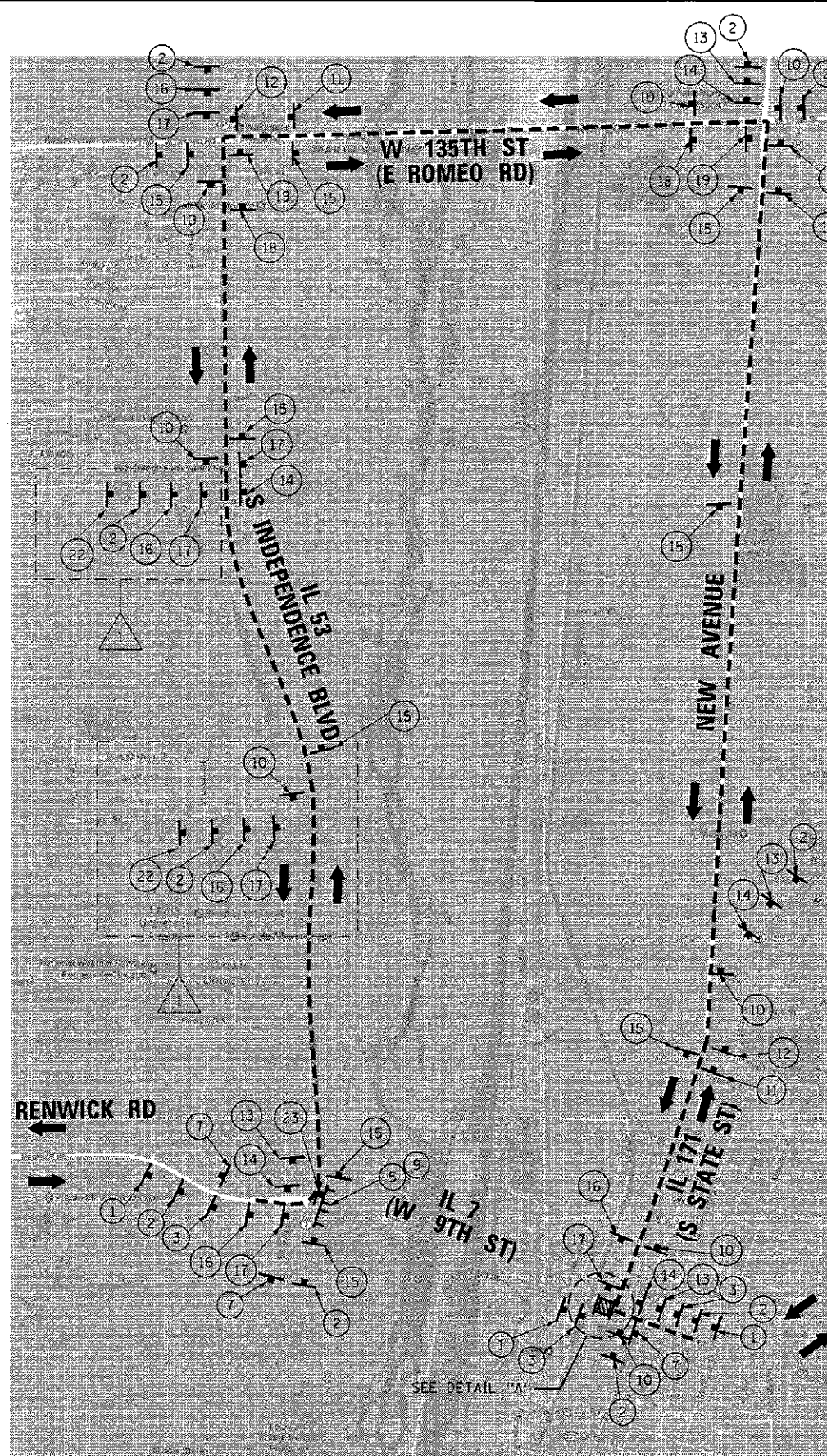
AES Services, Inc.
 111 S. Wacker Drive, Suite 3910
 Chicago, IL 60606
 Ph: 312-23-6783

USER NAME = #USER*	DESIGNED - AWM	REVISED - 07/24/2017 JA
PLLOT SCALE = #SCALE*	DRAWN - TOM	REVISED -
PLLOT DATE = 7/25/2017	CHECKED - JA	REVISED -
	DATE - 3/20/2017	REVISED -

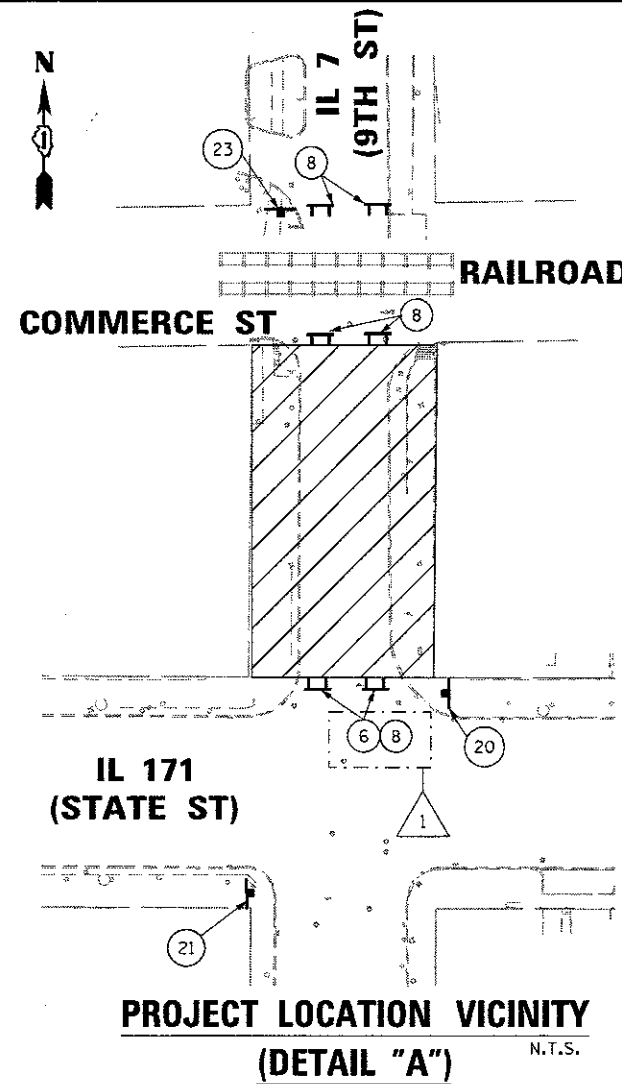
**STATE OF ILLINOIS
 DEPARTMENT OF TRANSPORTATION**

**IL 171 (STATE ST.) & IL 7 (9TH ST.) IMPROVEMENTS
 SUGGESTED MOT STAGE 2**

F.A.P. RTE. 577	SECTION D-EXT-N	COUNTY WILL	TOTAL SHEETS 140	SHEET NO. 42
CONTRACT NO. 62C09				
ILLINOIS FED. AID PROJECT				



DETOUR MAP



23 CHANGEABLE MESSAGE SIGN

- LEGEND:**
- TYPE III BARRICADES CONFORMING TO STD. 701901 WITH 2 FLASHING LIGHTS PER BARRICADE
 - CONSTRUCTION ZONE
 - DETOUR ROUTE
 - TRAFFIC FLOW
 - TYPE A FLASHING LIGHT

- | | | | | |
|---|---|---|---|--|
| 1 ROAD CLOSED AHEAD
W20-3-4848 | 2 DETOUR AHEAD
W20-2-4848 | 3 ROAD CLOSED 500 FT
W20-3-4848 | 4 DETOUR
M4-8-2412 | 5 DETOUR
M4-10L-4818 |
| 6 DETOUR
M4-10R-4818 | 7 END DETOUR
M4-8A-2418 | 8 ROAD CLOSED
R11-2-4830 | 9 ROAD CLOSED TO THRU TRAFFIC
R11-4-6030 | |
| 10 DETOUR SOUTH ILLINOIS 7
M4-8-2412
M3-2-2412
M1-1100-2424
M6-3-2115 | 11 DETOUR SOUTH ILLINOIS 7
M4-8-2412
M3-2-2412
M1-1100-2424
M5-1L-2115 | 12 DETOUR SOUTH ILLINOIS 7
M4-8-2412
M3-2-2412
M1-1100-2424
M6-1-2115 | 13 DETOUR SOUTH ILLINOIS 7
M4-8-2412
M3-3-2412
M1-1100-2424
M5-1R-2115 | |
| 14 DETOUR SOUTH ILLINOIS 7
M4-8-2412
M3-2-2412
M1-1100-2424
M6-1-2115 | 15 DETOUR NORTH ILLINOIS 7
M4-8-2412
M3-1-2412
M1-1100-2424
M6-3-2115 | 16 DETOUR NORTH ILLINOIS 7
M4-8-2412
M3-1-2412
M1-1100-2424
M5-1L-2115 | 17 DETOUR NORTH ILLINOIS 7
M4-8-2412
M3-1-2412
M1-1100-2424
M6-1-2115 | |
| 18 DETOUR NORTH ILLINOIS 7
M4-8-2412
M3-1-2412
M1-1100-2424
M5-1R-2115 | 19 DETOUR NORTH ILLINOIS 7
M4-8-2412
M3-1-2412
M1-1100-2424
M6-1-2115 | 20 R3-1 30"x30" | 21 R3-2 30"x30" | 22 IL 7 CLOSED TO THRU TRAFFIC FOLLOW DETOUR
60x30 |

NOTES:

1. ALL TRAFFIC CONTROL DEVICES SHALL BE FURNISHED, ERECTED AND MAINTAINED BY THE CONTRACTOR.
2. ALL SIGNS NOT ATTACHED TO BARRICADES SHALL BE POST MOUNTED, UNLESS OTHERWISE NOTED.
3. LOCATIONS OF TRAFFIC CONTROL DEVICES MAY BE ADJUSTED BY THE ENGINEER.
4. TRAFFIC CONTROL SHALL BE IN ACCORDANCE WITH THE STANDARD SPECIFICATIONS FOR ROAD AND BRIDGE CONSTRUCTION, THE MANUAL FOR UNIFORM TRAFFIC CONTROL DEVICES, THE HIGHWAY STANDARDS AND SPECIAL PROVISIONS.
5. PLACEMENT AND SPACING OF SIGNS AND BARRICADES SHALL BE IN ACCORDANCE WITH TC-21
6. THE COST OF SUPPLYING, ERECTION AND MAINTAINING BARRICADES, WARNING LIGHTS AND ALL SIGNS, INCLUDING SIGN PANEL OVERLAYS SHALL BE INCLUDED IN THE CONTRACT COST OF TRAFFIC CONTROL AND PROTECTION (SPECIAL)
7. DETOUR SHALL BE IN PLACE FROM FRIDAY 10:00PM TO MONDAY 5:00AM ONLY AND THE EXACT DATES SHALL BE COORDINATED WITH THE ENGINEER FOR THE WORK THAT WILL REQUIRE THE DETOUR
8. ANOTHER IDOT CONTRACT 61D71 WILL BE CONCURRENT WITH THIS CONTRACT. THE CONTRACTOR SHALL COVER THE CONFLICTING DETOUR SIGNS FROM CONTRACT 61D71 DURING DETOUR OF IL 7 AND SHALL COORDINATE WITH CONTRACT 61D71
9. THE CONTRACTOR SHALL NOTIFY IDOT AND CITY OF LOCKPORT (815-838-0549) 10 DAYS IN ADVANCE OF OPERATION OF THE DETOUR ROUTE
10. PRIOR TO CLOSURE AND DETOUR OF IL 7 THE ENGINEER AND CONTRACTOR SHALL NOTIFY CHEVRON ENVIRONMENTAL MANAGEMENT COMPANY CONTACT: SCOTT BICK AT 815-8380770 EXT 25
11. USE CHANGEABLE MESSAGE SIGNS TWO WEEKS IN ADVANCE OF LANE CLOSURES.

MIN 5" BLACK LETTERS ON ORANGE BACKGROUND

P:\62C09\62C09-04-PTB177-804-W04-IL 7 & IL 171 Intersect Improvement\13 CAD\00486Sheets\13 62C09-04-DeTour_Plan.dgn

AES Services, Inc.
111 S. Wacker Drive, Suite 3910
Chicago, IL 60606
Ph: 312-23-6783

USER NAME = awmohammed	DESIGNED - AWM	REVISED - 07/24/2017 JA
PLOT SCALE = 2.0000' / 1" =	DRAWN - TOM	REVISED -
PLOT DATE = 7/25/2017	CHECKED - JA	REVISED -
	DATE - 3/20/2017	REVISED -

STATE OF ILLINOIS
DEPARTMENT OF TRANSPORTATION

IL 171 (STATE ST.) & IL 7 (9TH ST.) IMPROVEMENTS
DETOUR PLAN

F.A.P. RTE. 577	SECTION 0-EXT-N	COUNTY WILL	TOTAL SHEETS 140	SHEET NO. 43
CONTRACT NO. 62C09			ILLINOIS FED. AID PROJECT	