

CODE NO.	ITEM	UNIT	TOTAL QUANTITY	CONSTRUCTION CODE		
				80% FED 20% STATE		
				ROADWAY	WALL	
				0004	0004	
				URBAN	RURAL	S. N. 022-2035
550A0340	STORM SEWERS, CLASS A, TYPE 2 12"	FOOT	4	4		
550A0380	STORM SEWERS, CLASS A, TYPE 2 18"	FOOT	31	31		
55100500	STORM SEWER REMOVAL 12"	FOOT	32	32		
59100100	GEOCOMPOSITE WALL DRAIN	SO YD	266	266		
60201340	CATCH BASINS, TYPE A, 4'-DIAMETER, TYPE 24 FRAME AND GRATE	EACH	1	1		
60205040	CATCH BASINS, TYPE A, 5'-DIAMETER, TYPE 24 FRAME AND GRATE	EACH	1	1		
60206905	CATCH BASINS, TYPE C, TYPE 1 FRAME, OPEN LID	EACH	3	3		
60234200	INLETS, TYPE A, TYPE 1 FRAME, OPEN LID	EACH	2	2		
60250200	CATCH BASINS TO BE ADJUSTED	EACH	2	2		
60500060	REMOVING INLETS	EACH	3.0	3		
60615400	PAVED DITCH, TYPE A-15	FOOT	603	603		
60618300	CONCRETE MEDIAN SURFACE, 4 INCH	SO FT	270	270		
64300750	IMPACT ATTENUATORS (SEVERE USE, NARROW), TEST LEVEL 2	EACH	1	1		
67000400	ENGINEER'S FIELD OFFICE, TYPE A	CAL MO	3	3		

CODE NO.	ITEM	UNIT	TOTAL QUANTITY	CONSTRUCTION CODE		
				80% FED 20% STATE		
				ROADWAY	WALL	
				0004	0004	
				URBAN	RURAL	S. N. 022-2035
67100100	MOBILIZATION	LSUM	1	1		
70300904	PAVEMENT MARKING TAPE, TYPE IV 4"	FOOT	1306	1306	△	
* 78000200	THERMOPLASTIC PAVEMENT MARKING -LINE 4"	FOOT	540	540		
X0322906	WEEP HOLES CORED	EACH	21		21	
X0327980	PAVEMENT MARKING REMOVAL -WATER BLASTING	SO FT	179	179		
X5537800	STORM SEWERS TO BE CLEANED 12"	FOOT	66	66		
X5860110	GRANULAR BACKFILL FOR STRUCTURES	CU YD	218		218	
X7010216	TRAFFIC CONTROL AND PROTECTION, (SPECIAL)	LSUM	1	1		
X7030005	TEMPORARY PAVEMENT MARKING REMOVAL	SO FT	431	431	△	
X7040010	TEMPORARY CONCRETE BARRIER (SPECIAL)	FOOT	113	113		
Z0004562	COMBINATION CURB AND GUTTER REMOVAL AND REPLACEMENT	FOOT	514	514		
Z0013798	CONSTRUCTION LAYOUT	LSUM	1	1		
Z0018500	DRAINAGE STRUCTURES TO BE CLEANED	EACH	2	2		
Z0030850	TEMPORARY INFORMATION SIGNING	SO FT	51	51		

**HBM**  
ENGINEERING GROUP, LLC  
CONSULTING & DESIGN  
RESEARCH & TESTING

418 WEST HARRISON ST.  
SUITE 231  
HILLSIDE, IL 60162  
PHONE: (708) 236-0900  
FAX: (708) 236-0901

USER NAME = Kanudrabants  
DESIGNED - KJD  
DRAWN - KJD  
CHECKED - JMG  
DATE - 06/01/2017

REVISED -  
REVISED -  
REVISED -  
REVISED -

STATE OF ILLINOIS  
DEPARTMENT OF TRANSPORTATION

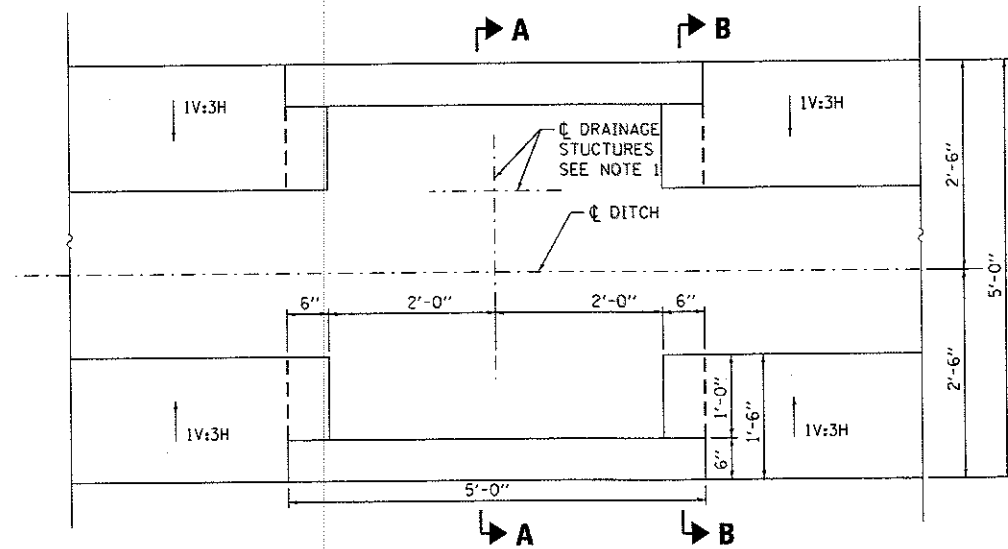
SUMMARY OF QUANTITIES  
IL 53 (LINCOLN AVE)  
SCALE: SHEET 2 OF 3 SHEETS STA. TO STA.

F.A.P. RTE. 870	SECTION 543R-1	COUNTY	TOTAL SHEETS 47	SHEET NO. 04
ILLINOIS FED. AID PROJECT			CONTRACT NO. 62C18	

NON-PARTICIPATING

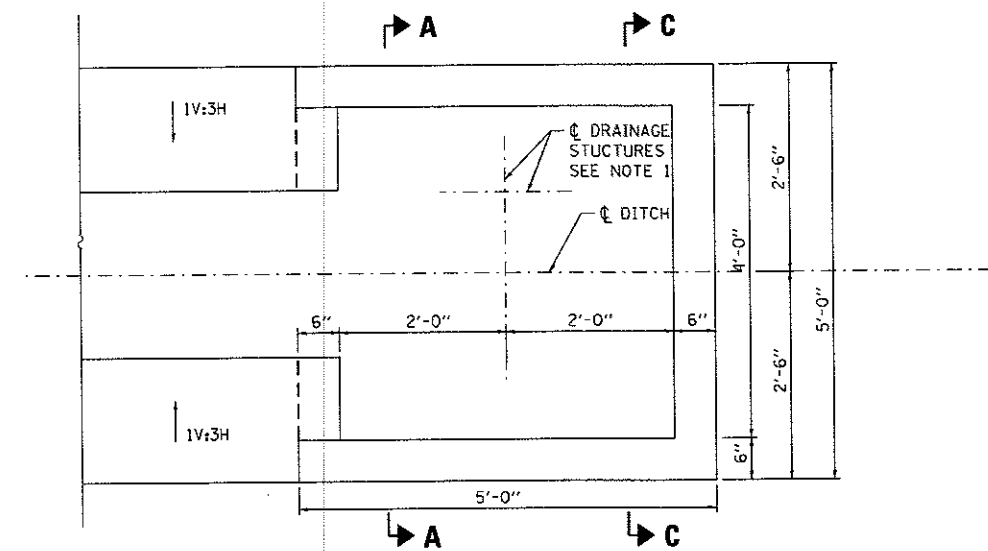
△ REV 7-19-17

REV



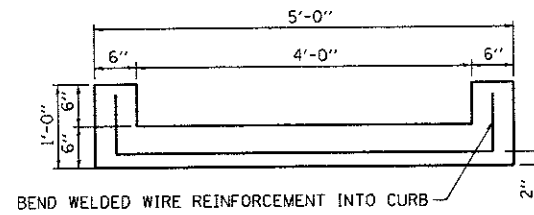
**DETAIL 1-PARTIAL PAVED DITCH PLAN AT DRAINAGE STRUCTURES**

AT STATIONS 1187+33.14 AND 1189+50.64  
SEE NOTE 2

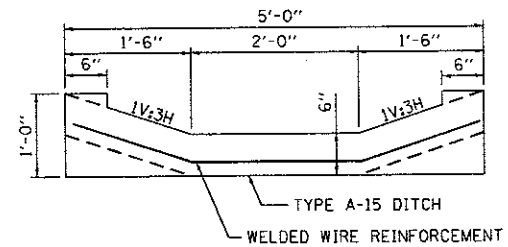


**DETAIL 2-PARTIAL PAVED DITCH PLAN AT DRAINAGE STRUCTURES**

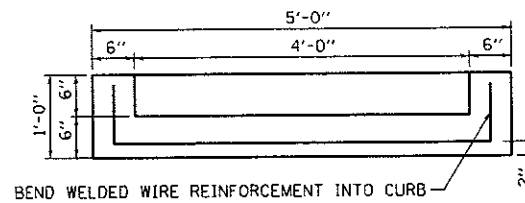
AT STATION 1191+15.64  
SEE NOTE 2



**SECTION A-A**



**SECTION B-B**



**SECTION C-C**

TEMPORARY TRAFFIC CONTROL					
STATION	TO	STATION	PAVEMENT MARKING REMOVAL - WATER BLASTING (SQ FT)	TEMPORARY PAVEMENT MARKING REMOVAL (SQ FT)	PAVEMENT MARKING TAPE, TYPE IV 4" (FOOT)
1186+79.89		1194+45.00		252	766
1195+25.00		1200+65.00	179	179	540

THERMOPLASTIC PAVEMENT MARKING - LINE 4"			
STATION	TO	STATION	LENGTH (FOOT)
1195+25.00		1200+65.00	540

COMBINATION CURB AND GUTTER REMOVAL AND REPLACEMENT			
STATION	TO	STATION	LENGTH (FOOT)
1186+79.89		1191+93.81	514

EARTHWORK SCHEDULE							
STATION	TO	STATION	EARTH EXCAVATION (CU YD)	STRUCTURE EXCAVATION (CU YD)	EARTH AND STRUCTURE EXCAVATION ADJUSTED FOR SHRINKAGE (15%) (CU YD)	EMBANKMENT (CU YD)	EARTHWORK BALANCE WASTE (+) OR SHORTAGE (-) (CU YD)
1184+75.00		1191+25.00	150	125	234	247	-13

**NOTES**

- FOR DRAINAGE STRUCTURES IN PAVED DITCH LOCATIONS, SEE SHEETS 11 AND 12.
- INCLUDE COST OF MODIFIED DITCH WITH PAY ITEM PAVED DITCH, TYPE A-15

**HBM**  
ENGINEERING GROUP, LLC  
CONSULTING & DESIGN  
INSPECTION & TESTING  
RESEARCH & TESTING

4415 WEST HARRISON ST.  
SUITE 231  
HILLSDALE, IL 60162  
PHONE: (708) 236-0900  
FAX: (708) 236-0901

USER NAME = marion.egemy  
DESIGNED - DA  
DRAWN - EAH  
CHECKED - JMG  
DATE - 06/01/2017  
REVISOR - 6/28/2017  
REVISION - 7/17/2017 MAA  
REVISOR -  
REVISION -  
REVISOR -  
REVISION -

STATE OF ILLINOIS  
DEPARTMENT OF TRANSPORTATION

SCHEDULE OF QUANTITIES AND DETAILS  
IL 53 (LINCOLN AVE)  
SCALE: SHEET 1 OF 1 SHEETS STA. TO STA.

F.A.P. RTE.	SECTION	COUNTY	TOTAL SHEETS	SHEET NO.
870	543R-1	DU PAGE	47	07
ILLINOIS FED. AID PROJECT			CONTRACT NO. 62C18	