

INDEX OF SHEETS

1. COVER SHEET
2. GENERAL NOTES
- 3-4. SUMMARY OF QUANTITIES
5. TYPICAL SECTION
6. SCHEDULES
7. DETAILS

STANDARDS

- | | |
|-----------|--|
| 000001-06 | STANDARD SYMBOLS, ABBREVIATIONS AND PATTERNS |
| 001006 | DECIMAL OF AN INCH AND OF A FOOT |
| 701001-02 | OFF-ROAD OPERATIONS 2L, 2W, MORE THAN 15' (4.5 m) AWAY |
| 701006-05 | OFF-ROAD OPERATIONS 2L, 2W, 15' (4.5 m) TO 24" (600 mm) FROM PAVEMENT EDGE |
| 701301-04 | LANE CLOSURE, 2L, 2W, SHORT TIME OPERATIONS |
| 701306-03 | LANE CLOSURE, 2L, 2W, SLOW MOVING OPERATIONS DAY ONLY, FOR SPEEDS ≥ 45 MPH |
| 701901-06 | TRAFFIC CONTROL DEVICES |
| 780001-05 | TYPICAL PAVEMENT MARKINGS |
| 781001-04 | TYPICAL APPLICATIONS RAISED REFLECTIVE PAVEMENT MARKERS |

**STATE OF ILLINOIS
DEPARTMENT OF TRANSPORTATION**

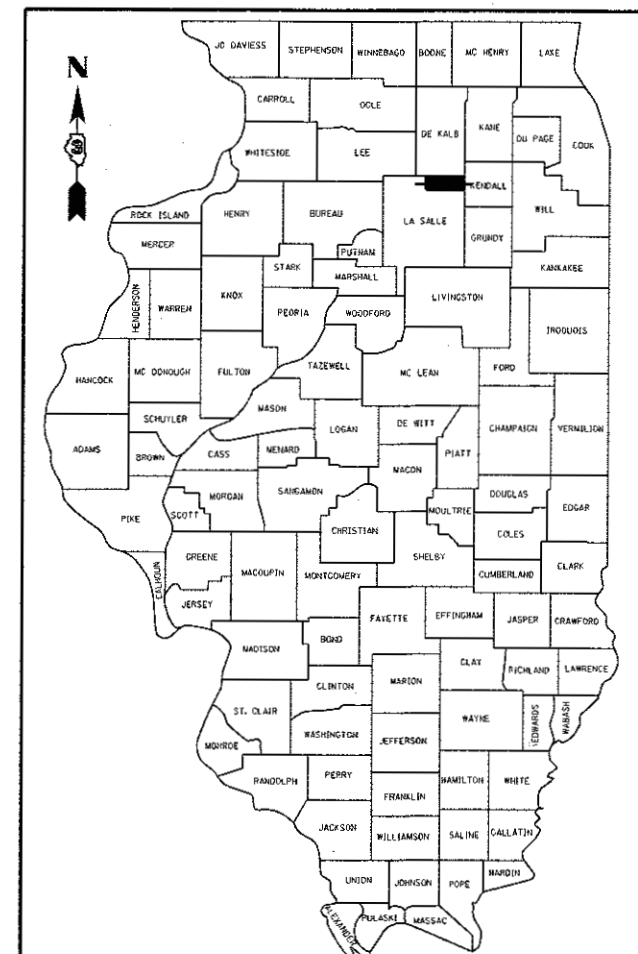
**PROPOSED
HIGHWAY PLANS**

**F.A.P. ROUTE 587 (US 34)
SECTION (17,18)I-1
MICRO-SURFACING CENTERLINE REPAIR
LASALLE COUNTY**

C-93-081-17

F.A.P. RTE.	SECTION	COUNTY	TOTAL SHEETS	SHEET NO.
587	(17,18)I-1	LASALLE	7	1
		ILLINOIS	CONTRACT NO. 66H42	

D-93-002-17



LOCATION OF SECTION INDICATED THUS: - [shaded box] -

FUNCTIONAL CLASSIFICATION

URBAN - OTHER ARTERIAL

F. A. P. ROUTE 591 (US 34)

2015 ADT 12600

P. V. 95.2% S. U. 2.8% M. U. 2.0%

STATE OF ILLINOIS
DEPARTMENT OF TRANSPORTATION

SUBMITTED May 23 2017
[Signature]
REGIONAL ENGINEER

June 30 2017
[Signature]
ENGINEER OF DESIGN AND ENVIRONMENT

June 30 2017
[Signature]
DIRECTOR OF PROGRAM DEVELOPMENT

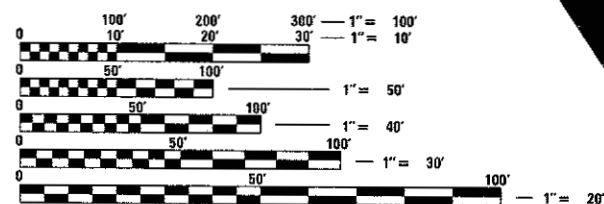
RAILROAD OMISSION
STA. 578 + 87 TO STA. 581 + 61

BEGIN IMPROVEMENT: STA. 529 + 45

INTERSECTION US 34 & E. 11th RD.

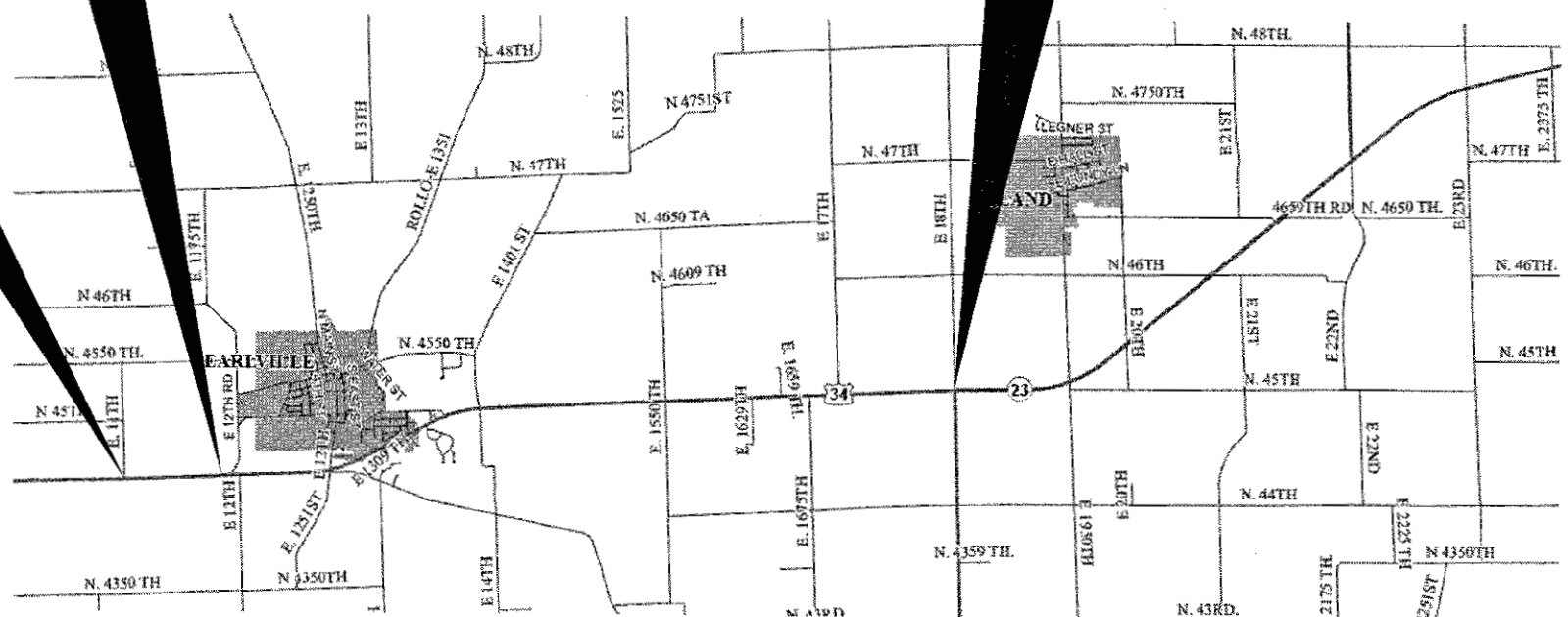
END IMPROVEMENT: STA. 917 + 12

INTERSECTION US 34 & SOUTH IL 23



FULL SIZE PLANS HAVE BEEN PREPARED USING STANDARD ENGINEERING SCALES. REDUCED SIZED PLANS WILL NOT CONFORM TO STANDARD SCALES. IN MAKING MEASUREMENTS ON REDUCED PLANS, THE ABOVE SCALES MAY BE USED.

J.U.L.I.E.
JOINT UTILITY LOCATION INFORMATION FOR EXCAVATION
1-800-892-0123
OR 811



DISTRICT NO. 3 PHONE (815)434-6131
PROJECT ENGINEER: JOE KANNEL:
UNIT CHIEF: RON WOODSHANK
CONTRACT NO. 66H42

GROSS LENGTH = 38,702 FT. = 7.33 MILE
NET LENGTH = 38,702 FT. = 7.33 MILE

**PRINTED BY THE AUTHORITY
OF THE STATE OF ILLINOIS**

GENERAL NOTES

PLAN DIMENSIONS AND DETAILS RELATIVE TO EXISTING PLANS ARE SUBJECT TO NOMINAL CONSTRUCTION VARIATIONS. THE CONTRACTOR SHALL FIELD VERIFY EXISTING DIMENSIONS AND DETAILS AFFECTING NEW CONSTRUCTION AND MAKE NECESSARY APPROVED ADJUSTMENTS PRIOR TO CONSTRUCTION OR ORDERING OF MATERIALS. SUCH VARIATIONS SHALL NOT BE CAUSE FOR ADDITIONAL COMPENSATION FOR A CHANGE IN SCOPE OF WORK; HOWEVER, THE CONTRACTOR WILL BE PAID FOR THE QUANTITY ACTUALLY FURNISHED AT THE UNIT PRICE BID FOR THE WORK.

ANY REFERENCE TO A STANDARD IN THESE PLANS SHALL BE INTERPRETED TO MEAN THE EDITION AS INDICATED BY THE SUBNUMBER SHOWN IN THE LIST OF STANDARDS OR THE COPY INCLUDED IN THESE PLANS.

THE AGGREGATES FOR THE SURFACE LIFT OF MICRO-SURFACING SHALL MEET THE FRICTION AGGREGATE REQUIREMENTS FOR MIXTURE D IN ARTICLE 1004.03(g).

THE CONTRACTOR SHALL CONTACT THE LOCAL ILLINOIS STATE POLICE OFFICE TO REPLACE THE "AIR STRIPES" AFTER MICRO-SURFACING OPERATIONS HAVE BEEN COMPLETED. CONTACT PERSON IS: LIEUTENANT DUSTIN GEIER *4991 OPERATIONS OFFICER, ILLINOIS STATE POLICE, DISTRICT 17
 CONTACT PERSON IS: LIEUTENANT DUSTIN GEIER
 *4991 OPERATIONS OFFICER
 ILLINOIS STATE POLICE
 2971 EAST 350TH RD.
 LASALLE, IL 61301
 PHONE: 815-224-1171 EXT. 112

THE FOLLOWING RATES OF APPLICATION HAVE BEEN USED IN CALCULATING PLAN QUANTITIES:

MIX FOR CRACKS, JTS & FLGWYS	0.0003	TONS / SQ YD
MICRO-SURFACING, SINGLE PASS	20	LBS / SQ YD

THE TEMPORARY PAVEMENT MARKING SHALL BE PLACED 3' OFF THE CENTERLINE IN THE "CLOSED LANE" PRIOR TO REMOVING EXISTING PAVEMENT MARKINGS.

COMMITMENTS

MONUMENT RECORD

INDEX NUMBER	DESCRIPTION	EXISTING MONUMENT TYPE	PROPOSED MONUMENT TYPE	MONUMENT RECORD TO BE RECORDED	RESPONSIBILITY
034116	CENTER SEC 24, T36N, R2E, 3RD PM	PLAQUE	SURVEY NAIL	N	2

THE LISTED MONUMENT LOCATION HAS BEEN RECORDED BY GPS. PRE CONSTRUCTION TIES BY THE R.E. ARE NOT REQUIRED. THE R.E. MUST TIE AND BRING TO THE ATTENTION OF THE PLATS AND PLANS MANAGER ANY ADDITIONAL UNLISTED MONUMENTS FOUND. THIS MONUMENT IS LOCATED NEAR THE CENTERLINE MICROSURFACING. UPON JOB COMPLETION, THE R.E. WILL INFORM THE PLATS AND PLANS MANAGER TO HAVE AN IDOT LAND SURVEYOR INSPECT THE LISTED MONUMENT, AND TO RE-ESTABLISH IT IF MISSING.

RESPONSIBILITY:
 1) RESIDENT TO RE-ESTABLISH MONUMENT (PAY ITEM REQUIRED. PERMANENT SURVEY MARKER, TYPE 1)
 2) PLATS AND PLANS TO RE-ESTABLISH MONUMENT

STATE OF ILLINOIS
 DEPARTMENT OF TRANSPORTATION
 DISTRICT THREE
 AS BUILT INFORMATION

 SUPERVISING CONSTRUCTION FIELD ENGINEER

 RESIDENT ENGINEER / TECHNICIAN

START & END DATES
 OF CONSTRUCTION:

INSPECTORS:

DATE: 5-23-17

PREPARED BY: *Tom Benick*
 DISTRICT STUDIES & PLANS ENGINEER

EXAMINED BY: *[Signature]*
 DISTRICT CONSTRUCTION ENGINEER

Michael A. Blat
 DISTRICT MATERIALS ENGINEER

Jan [Signature]
 DISTRICT OPERATIONS ENGINEER

FILE NAME =	USER NAME = woodshark1	DESIGNED - RW	REVISED -	STATE OF ILLINOIS DEPARTMENT OF TRANSPORTATION	GENERAL NOTES	F.A.P. RTE. 587	SECTION (17,18)1-1	COUNTY LASALLE	TOTAL SHEETS 7	SHEET NO. 2		
Documents\IDOT Offices\District 3\Projects\0364\DRAWING\0642 RW.tbl.dgn		CHECKED - EP	REVISED -			SCALE:	SHEET 1 OF 1 SHEETS	STA. TO STA.	ILLINOIS FED. AID PROJECT CONTRACT NO. 66H42			
PLOT SCALE = 100.0000' / in.		DATE - 3/4/2017	REVISED -									
Default												

CODE NO.	ITEM	UNIT	TOTAL QUANTITY	CONSTR. CODE
				CONT. MAINT.
				100% STATE
				ROADWAY
				0005 ✓
				RURAL ✓
40600290	BITUMINOUS MATERIALS (TACK COAT)	POUND	3849	3849
40600400	MIXTURE FOR CRACKS, JOINTS, AND FLANGEWAYS	TON	2.5	2.5
67100100	MOBILIZATION	LSUM	1	1
70100460	TRAFFIC CONTROL AND PROTECTION, STANDARD 701306	LSUM	1	1
70300220	TEMPORARY PAVEMENT MARKING - LINE 4"	FOOT	5136	5136
70300240	TEMPORARY PAVEMENT MARKING - LINE 6"	FOOT	9624	9624
* 78008210	POLYUREA PAVEMENT MARKING TYPE I - LINE 4"	FOOT	5136	5136
* 78008230	POLYUREA PAVEMENT MARKING TYPE I - LINE 6"	FOOT	9624	9624
* 78100100	RAISED REFLECTIVE PAVEMENT MARKER	EACH	481	481
78300200	RAISED REFLECTIVE PAVEMENT MARKER REMOVAL	EACH	481	481
X0326218	FIBER-MODIFIED ASPHALT CRACK SEALING	FOOT	38493	38493
X0327980	PAVEMENT MARKING REMOVAL - WATER BLASTING	SQ FT	13014	13014
* Z0008758	AERIAL SPEED CHECK MARKING	FOOT	12	12
Z0030850	TEMPORARY INFORMATION SIGNING	SQ FT	42	42

14

*SPECIALITY ITEMS

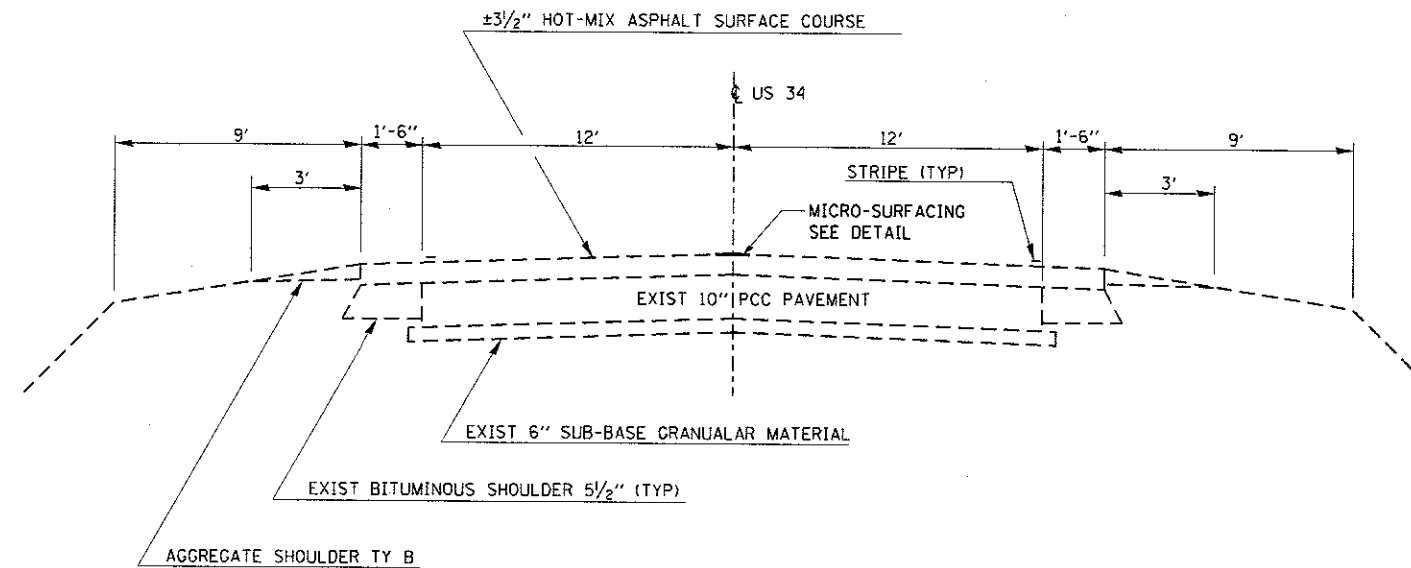
FILE NAME =	USER NAME = woodshankr1	DESIGNED - RW	REVISED -	STATE OF ILLINOIS DEPARTMENT OF TRANSPORTATION	SUMMARY OF QUANTITIES			F.A.P. RTE.	SECTION	COUNTY	TOTAL SHEETS	SHEET NO.
pw:\IL084EBIDINTEG\Illinois.gov\PWIDOT\Documents\IDOT Offices\District 3\Projects\0368-DRAWING>Data\66H42 RW\table.dgn	PLOT SCALE = 100.0000' / in.	CHECKED - EP	REVISED -					587	(17,18)-1	LASALLE	7	3
Default	PLOT DATE = 5/17/2017	DATE - 3/4/2017	REVISED -		SCALE:	SHEET 1 OF 2 SHEETS	STA.	TO STA.	CONTRACT NO. 66H42			
								ILLINOIS FED. AID PROJECT				

REV

CODE NO.	ITEM	UNIT	TOTAL QUANTITY	CONSTR. CODE
				CONT. MAINT.
				100% STATE ROADWAY
				0005
				RURAL
Z0048665	RAILROAD PROTECTIVE LIABILITY INSURANCE	LSUM	1	1
Z0063804	MICRO-SURFACING, SINGLE PASS, TYPE II, MIXTURE D	SO YD	8554	8554

2

FILE NAME =	USER NAME = woodshankr1	DESIGNED - RW	REVISED -	STATE OF ILLINOIS DEPARTMENT OF TRANSPORTATION	SUMMARY OF QUANTITIES				F.A.P. RTE.	SECTION	COUNTY	TOTAL SHEETS	SHEET NO.
PH:\IL084EBIDINTEG\Illinois.gov\PHIDOT\Documents\DOT Offices\District 3\Projects\0386\DRAWING\66H42RW\title.dgn		CHECKED - EP	REVISED -		587	(17,18)-1	LASALLE	7	4				
PLDT SCALE = 100.0000 1/ in.		DATE - 3/4/2017	REVISED -		SCALE: SHEET 2 OF 2 SHEETS STA. TO STA.				CONTRACT NO. 66H42				
Default	PLDT DATE = 5/22/2017				ILLINOIS FED. AID PROJECT								

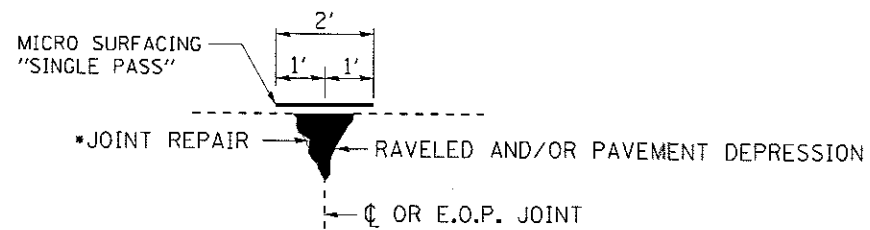


TYPICAL SECTION

STA. 529+45 TO STA. 917+12

OMISSIONS

RAILROAD: STA. 578+87 TO STA. 581+61



MICRO-SURFACING DETAIL

- * FIBER-MODIFIED ASPHALT CRACK SEALING

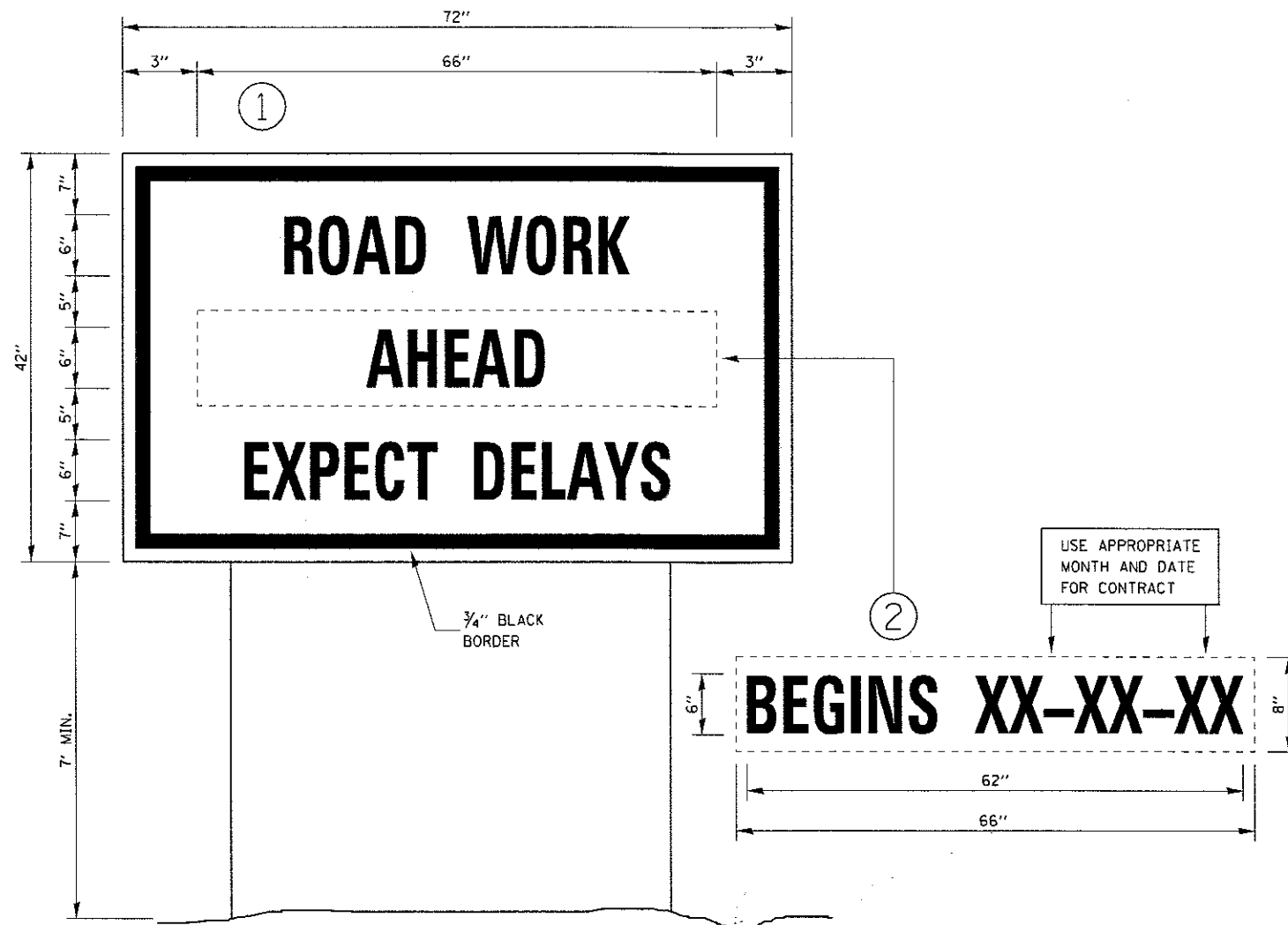
NOTES

- 1) MICRO-SURFACING SHALL BE LOCATED AT THE CENTERLINE OF PAVEMENT JOINT. ACTUAL LOCATIONS SHALL BE FIELD DETERMINED BY THE ENGINEER PRIOR TO THE CONTRACTOR BEGINNING HIS/HER CONSTRUCTION OPERATIONS.
- 2) THE TEMPORARY STRIPING SHALL BE OFFSET 3' FROM THE CENTERLINE, IN THE CLOSED LANE.
- 3) OFFSET OF THE PERMANENT CENTERLINE PAVEMENT STRIPING SHALL BE FIELD DETERMINED BY THE ENGINEER.

FILE NAME =	USER NAME = woodshenkrl	DESIGNED - RW	REVISED -	STATE OF ILLINOIS DEPARTMENT OF TRANSPORTATION	TYPICAL SECTIONS			F.A.P. RTE.	SECTION	COUNTY	TOTAL SHEETS	SHEET NO.
Default	Documents\IDOT Offices\District 3\Projects\0364\Drawings\66H42RW\1011.sldgn	CHECKED - EP	REVISED -					587	(17,18)1-1	LASALLE	7	5
	PLOT SCALE = 100.0000' / 1" =	DATE - 3/4/2017	REVISED -		SCALE: SHEET 1 OF 1 SHEETS STA. TO STA.			CONTRACT NO. 66H42				
	PLOT DATE = 5/17/2017				ILLINOIS FED. AID PROJECT							

SCHEDULES FOR MICRO-SURFACING

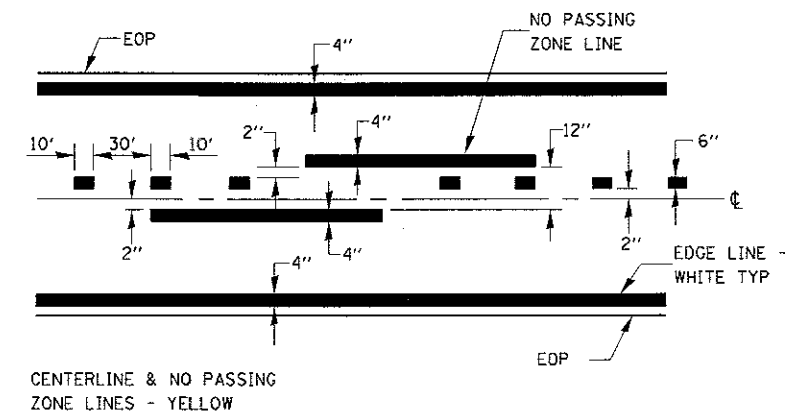
LOCATION		LENGTH	TEMPORARY PAVEMENT MARKING LINE - 4" (NPZ)	TEMPORARY PAVEMENT MARKING LINE - 6"	POLYUREA PAVEMENT MARKING TYPE I LINE 4"	POLYUREA PAVEMENT MARKING TYPE I LINE 6"	PREFORMED PLASTIC PAVEMENT MARKING TYPE B 18"	PAVEMENT MARKING REMOVAL WATERBLASTING	MIXTURE FOR CRACKS JOINTS & FLANGWAYS MIX C, N50	FIBER MODIFIED ASPHALT CRACK SEALING	MICRO-SURFACING SINGLE PASS TYPE II MIX C	BITUMINOUS MATERIALS (TACK COAT)	RAISED REFLECTIVE PAVEMENT MARKER	RAISED REFLECTIVE PAVEMENT MARKER REMOVAL
STA.	- STA.	FOOT	FOOT	FOOT	FOOT	FOOT	FOOT	SQ FT	TON	FOOT	SQ YD	POUND	EACH	EACH
529+45	- 578+87	4942	300	1236	300	1236		1434	0.3	4942	1098	494	62	62
578+87	- 581+61	274	OMISSION - RAILROAD											
581+61	- 917+12	33551	4836	8388	4836	8388	12	11580	2.2	33551	7456	3355	419	419
TOTAL			5136	9624	5136	9624	12	13014	2.5	38493	8554	3849	481	481



TEMPORARY INFORMATION SIGNING

NOTES:

1. USE 6" D BLACK LETTERING ON FLUORESCENT ORANGE BACKGROUND.
2. ERECT SIGNS AT LOCATIONS IN ADVANCE OF THE "ROAD CONSTRUCTION AHEAD" SIGNS AS DIRECTED BY THE ENGINEER.
3. ERECT SIGN ① WITH INSTALLED PANEL ② A MINIMUM OF ONE WEEK PRIOR TO THE START OF THE LANE CLOSURE.
4. REMOVE PANEL ② ON THAT DATE.
5. SEE SPECIAL PROVISION "TEMPORARY INFORMATION SIGNING" FOR ADDITIONAL INFORMATION.
6. WILL BE PAID FOR PER SQ FT AS "TEMPORARY INFORMATION SIGNING". EACH SIGN = 21 SQ FT AND THE DATE PANEL ② WILL NOT BE MEASURED SEPARATELY FOR PAYMENT.



PAVEMENT MARKING

FILE NAME =	USER NAME = woodshankr1	DESIGNED - RW	REVISED -	STATE OF ILLINOIS DEPARTMENT OF TRANSPORTATION	DETAILS		F.A.P. RTE.	SECTION	COUNTY	TOTAL SHEETS	SHEET NO.	
Default	PLOT SCALE = 100.0000 / 1 in.	CHECKED - EP	REVISED -				587	(17,18)-1	LASALLE	7	7	
	PLOT DATE = 5/17/2017	DATE - 3/4/2017	REVISED -		SCALE:	SHEET 1 OF 1 SHEETS	STA. TO STA.	ILLINOIS FED. AID PROJECT				
								CONTRACT NO. 66H42				