

08-04-2017 LETTING ITEM 042

STATE OF ILLINOIS
DEPARTMENT OF TRANSPORTATION

F.A.P. RTE.	SECTION	COUNTY	TOTAL SHEETS	SHEET NO.
332	D5 EAB CONTROL 2018-1	VERMILION	6	1
		ILLINOIS	CONTRACT NO. 70C62	

FOR INDEX OF SHEETS, SEE SHEET NO. 2
FOR SUMMARY OF QUANTITIES, SEE SHEET NO. 3

**PROPOSED
HIGHWAY PLANS**

F.A.P. ROUTE 332 (IL ROUTE 1)
SECTION D5 EAB CONTROL 2018-1

**TREE REMOVAL
VERMILION COUNTY**

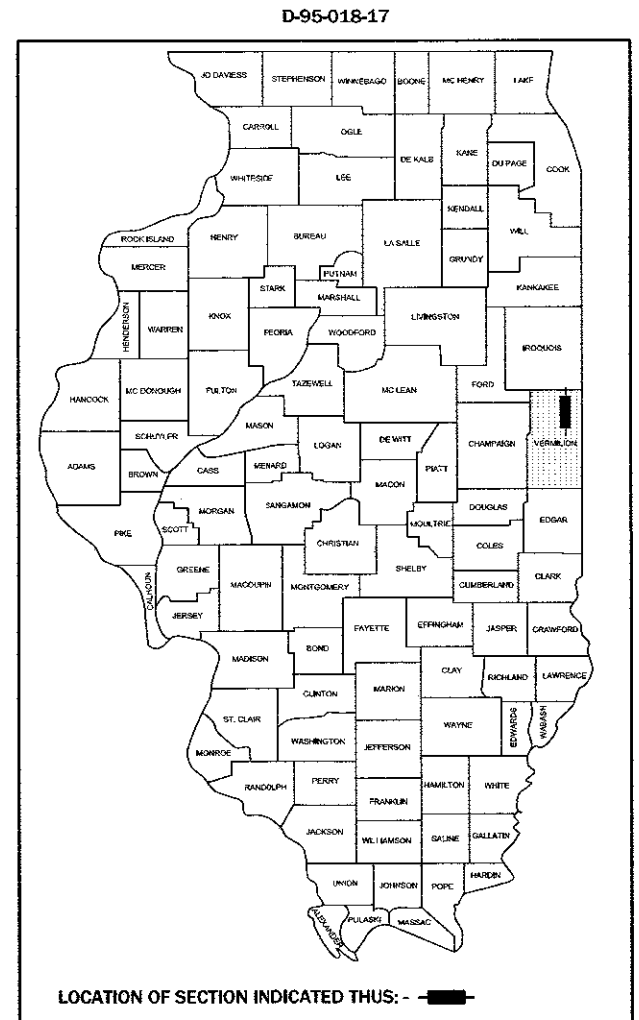
C-95-018-17

W. NEWELL RD. TO VERMILION CO. LINE

CURRENT TRAFFIC DATA

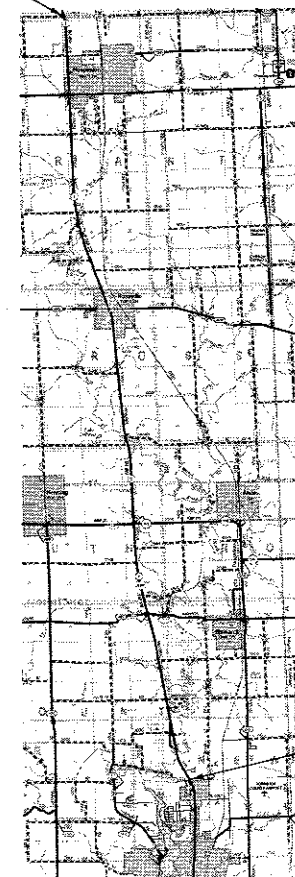
FAP 332 (IL ROUTE 1)

LEG "A"	4,600	W NEWELL RD TO BISMARCK RD (FAS 497A)
LEG "B"	4,560	BISMARCK RD (FAS 497A) TO IL 119 (FAP 711)
LEG "C"	4,500	IL 119 (FAP711) TO 3200 N (TR 83)
LEG "D"	5,250	3200 N (TR83) TO ATTICA ST IN ROSSVILLE (FAS 496)
LEG "E"	5,750	ATTICA ST IN ROSSVILLE (FAS 496) TO 4000 N (TR13A)
LEG "F"	5,000	4000 N (TR13A) TO IL 9
LEG "G"	5,450	IL 9 TO THOMPSON AVE IN HOOPESTON
LEG "H"	2,900	THOMPSON AVE IN HOOPESTON TO IROQUOIS CO. LINE

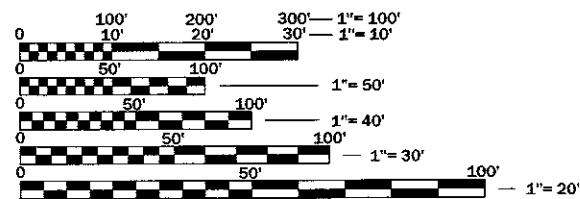


PROJECT ENDS
STATION 1205+80.00
(IROQUOIS CO. LINE)

R 12 W | R 11 W



PROJECT BEGINS
STATION 165+80.00
(W. NEWELL RD.)



FULL SIZE PLANS HAVE BEEN PREPARED USING STANDARD ENGINEERING SCALES. REDUCED SIZED PLANS WILL NOT CONFORM TO STANDARD SCALES. IN MAKING MEASUREMENTS ON REDUCED PLANS, THE ABOVE SCALES MAY BE USED.

J.U.L.I.E.
JOINT UTILITY LOCATION INFORMATION FOR EXCAVATION
1-800-892-0123
OR 811 BLOUNT, SO. ROSS, ROSS & GRANT TOWNSHIPS

PROJECT ENGINEER: NANCY FASIG
PHONE NO. (217)465-4181

CONTRACT NO. 70C62

GROSS & NET LENGTH = 104,100.00 FEET = 19.716 MILES

STATE OF ILLINOIS
DEPARTMENT OF TRANSPORTATION

SUBMITTED May 3 2017
James A. James REGIONAL ENGINEER

June 30 2017
Margaret M. Addis P.E. B.L. ENGINEER OF DESIGN AND ENVIRONMENT

June 30 2017
James A. James 2
DIRECTOR OF PROGRAM DEVELOPMENT

**PRINTED BY THE AUTHORITY
OF THE STATE OF ILLINOIS**

REV

INDEX OF SHEETS

SHEET NO.	DESCRIPTION
1	COVER
2	INDEX, STANDARDS, AND GENERAL NOTES
3	SUMMARY OF QUANTITIES
4-6	SCHEDULE OF QUANTITIES

LIST OF STANDARDS

STANDARD NO.	DESCRIPTION
001006	DECIMAL OF AN INCH AND OF A FOOT
701001-02	OFF-ROAD OPERATIONS, 2L, 2W, MORE THAN 15' (4.5 M) AWAY
701006-05	OFF-ROAD OPERATIONS, 2L, 2W, 15' (4.5 M) TO 24" (600 MM) FROM PAVEMENT EDGE
701201-04	LANE CLOSURE, 2L, 2W, DAY ONLY, FOR SPEEDS \geq 45 MPH
701901-06	TRAFFIC CONTROL DEVICES

GENERAL NOTES

G.N.-100
 ENGLISH UNITS OF MEASUREMENT SHALL GOVERN OVER AND SUPERSEDE ANY METRIC UNITS SHOWN IN THIS CONTRACT. WHERE INCLUDED, METRIC UNITS ARE FOR INFORMATION ONLY.

NO COMMITMENTS.

FILE NAME =	USER NAME = ceasfockjd	DESIGNED -	REVISED -	STATE OF ILLINOIS DEPARTMENT OF TRANSPORTATION	INDEX OF SHEETS, LIST OF STANDARDS & GENERAL NOTES	F.A.P. RTE.	SECTION	COUNTY	TOTAL SHEETS	SHEET NO.
DRAWN	CHECKED	REVISED	REVISED			332	D5 EAB CONTROL 2018-1	VERMILION	6	2
PLOT SCALE = 40.0000" / in.	DATE	REVISED	REVISED			CONTRACT NO. 70C62				
PLOT DATE = 4/26/2017	DATE	REVISED	REVISED			SCALE:	SHEET 1	OF 1	SHEETS	STA.

Y03 B 9 YAM

SUMMARY OF QUANTITIES

LOCATION OF WORK: FAP 332
 (ILL ROUTE 1)
 VERMILION
 COUNTY
 RURAL ✓
 FUNDING BREAKOUT: 100% STATE ✓
 CONSTRUCTION TYPE CODE: 0031 ✓

CODE NO.	ITEM	UNIT	TOTAL QUANTITY
20100110	TREE REMOVAL (6 TO 15 UNITS DIAMETER)	UNIT	2,388.0
20100210	TREE REMOVAL (OVER 15 UNITS DIAMETER)	UNIT	2,445.0
67100100	MOBILIZATION	L SUM	1.0
70100450	TRAFFIC CONTROL AND PROTECTION, STANDARD 701201	L SUM	1.0
* DENOTES SPECIALTY ITEM			

TREE REMOVAL

VERMILION COUNTY

NORTHBOUND ROUTE 1 STARTING AT WEST NEWELL ROAD

LOCATION	DESCRIPTION (IF ANY)	MARKED NUMBER	6 TO 15 UNITS DIAMETER (UNITS)	OVER 15 UNITS DIAMETER (UNITS)
164+80		1	7	
		2	7	
165+25		3	9	
165+35		4	10	
172+60		5		23
175+15		6	15	
		7	9	
		8	9	
		9	9	
		10	10	
166+70		11	11	
167+00		12	10	
		13	10	
		14	6	
167+30		15	6	
		16	7	
167+75		17	9	
178+30		18	11	
		19	10	
231+60		20		35
244+50		21		28
244+75		22		28
148+20		23		25
248+40		24		21
248+00		25		29
250+00		26		23
Tucka Buka RD		27		21
263+70		28	9	
		29	10	
		30	7	
264+00		31	14	
		32		26
270+00		33		18
269+80		34	15	
		35	15	
274+50		36		20
273+80		37	12	
278+20		38		19
292+20		39		18
294+00		40		17
301+00		41	8	
302+90		42	12	
		43	9	
307+25		44		32
311+25		45		24
321+80		46		23
322+70		47		19
327+20		48	9	
327+50		49		34
		50		34
329+70		51		28
330+20		52		22
329+00	IN FENCE	53		16
331+50	IN FENCE	54	8	
336+50		55		38
337+60		56		16
339+00		57		28
340+00		58		24

VERMILION COUNTY

NORTHBOUND ROUTE 1 STARTING AT WEST NEWELL ROAD (CONT'D.)

341+50		59		25
346+20		60		32
347+20		61		32
350+00		62		26
354+75		63		19
371+00		64		17
400+00		65	10	
400+50		66	8	
400+75		67	8	
493+70		68	14	
618+00		69	7	
618+50		70	6	
618+75		71	7	
628+00		72	7	
628+30		73	8	
628+40		74	8	
		75	7	
628+40		76	8	
		77	14	
		78	10	
628+00		79	8	
		80	10	
		81	10	
		82	12	
628+30		83	12	
727+00		84		20
737+80		85		18
755+70		86		20
		87		37
		90		24
845+70		91	15	
S of 3650 N		92		32
		93		32
861+00		94		17
867+50		95		33
887+50		96		27
896+00		97	9	
899+50		98		30
901+00		99	13	
905+00		100	14	
905+30		101	6	
		102	6	
		103	6	
MARKED ON PVMT.		104	8	
907+50		105	8	
		106	12	
		107	8	
		108	8	
		109	6	
908+00		110	8	
NORTH SIDE OF BRIDGE		111	14	
		112	12	
		113	6	
		114	6	
		115	6	
		116	6	
		117	12	
		118	12	
		119	10	
		120		18
		121	12	

FILE NAME =	USER NAME = ceartokjd	DESIGNED -	REVISED -
pw:\IL084EB\INTEG\Illinois.gov\PWIDOT\Documents\DOT\Offices\District 5\Projects\D570C62\CADData\CADsheets\D570C62\Drawings		DRAWN	REVISED -
\$MODELNAME\$	PLOT SCALE = 40,0000' / 1"	CHECKED -	REVISED -
	PLOT DATE = 4/26/2017	DATE -	REVISED -

**STATE OF ILLINOIS
DEPARTMENT OF TRANSPORTATION**

SCHEDULE OF QUANTITIES

SCALE: SHEET 1 OF 3 SHEETS STA. TO STA.

F.A.P. RTE.	SECTION	COUNTY	TOTAL SHEETS	SHEET NO.
332	D5 EAB CONTROL 2018-1	VERMILION	6	4
CONTRACT NO. 70C62				
ILLINOIS FED. AID PROJECT				

TREE REMOVAL

VERMILION COUNTY

NORTHBOUND ROUTE 1 STARTING AT WEST NEWELL ROAD (CONT'D.)

		122	12	
914+80		123	10	
914+40		124	12	
915+00		125	8	
		126	8	
916+75		127		16
917+50		128	12	
917+50		129	8	
		130	10	
		131	8	
		132	6	
		133	12	
927+80		134	12	
MARKED ON PVMT.		135	12	
		136		16
		137		17
		138	11	
		139	10	
		140	13	
		141	12	
		142	14	
		143	6	
		144	7	
		145	8	
		146	13	
		147	8	
		148	7	
		149	7	
		150	6	
		151	13	
		152	12	
		153	12	
		154	8	
		155	11	
		156	10	
		157	11	
		158	11	
		159		24
		160	12	
		161	8	
		162	9	
		163	12	
		164		22
		165	15	
		166		16
HOUSE # 37953		167		39
MARKED ON PVMT.		168	11	
		169	12	
		170	14	
		171		34
1009+50		172	11	
		173	8	
		174	9	
		175	10	
		176		21
		177	11	
		178	12	
		179		17
MARKED ON PVMT.		180	7	
		181	10	
		182	9	

VERMILION COUNTY

NORTHBOUND ROUTE 1 STARTING AT WEST NEWELL ROAD (CONT'D.)

		183	8	
1010+00		184	10	
MARKED ON PVMT.		185	9	
MARKED ON PVMT.		186	6	
MARKED ON PVMT.		187		24
MARKED ON PVMT.		188		30
SUBTOTAL NORTHBOUND ROUTE 1			1243	1424

*NOTE - MARKED TREES 88 AND 89 WERE DELETED

VERMILION COUNTY

SOUTHBOUND ROUTE 1 STARTING AT IROQUOIS COUNTY LINE

RT. 1 @ IROQUOIS CO. LINE	SOUTH BOUND WEST SIDE OF ROAD	189		24
		190		27
		191		27
		192		19
		193	9	
		194		24
		195	9	
		196	9	
		197	9	
		198	8	
		199	9	
		200	15	
1019+40		201		30
1018+90		202		31
964+60		203		30
MARKED ON PVMT.		204		20
		205		22
		206	10	
BEHIND GUARDRAIL STR. #180		207		16
		208	11	
		209	10	
		210		54
		211	7	
		212	7	
		213	9	
		214	6	
		215	7	
	DOUBLE TRUNK	216		19
	DOUBLE TRUNK	217	11	
		218		16
		219	6	
	DOUBLE TRUNK	220		27
		221	13	
		222	8	
	DOUBLE TRUNK	223		19
		224		19
		225	13	
		226		29
		227		19
		228		19
		229	9	
		230		32
		231		16
	3 TRUNK CLUSTER	232	7	
		233	13	

FILE NAME =	USER NAME = ceartokjd	DESIGNED -	REVISED -
pw:\IL04EB\INTEG\Illinois.gov\PWIDOT\Documents\DOT Offices\District 5\Projects\D570C62\CADData\CADsheets\D570C62\Drawings		CHECKED -	REVISED -
\$MODELNAME\$	PLOT SCALE = 40,0000' / 1" .	DATE -	REVISED -
	PLOT DATE = 4/26/2017		

**STATE OF ILLINOIS
DEPARTMENT OF TRANSPORTATION**

SCHEDULE OF QUANTITIES

SCALE: SHEET 2 OF 3 SHEETS STA. TO STA.

F.A.P. RTE.	SECTION	COUNTY	TOTAL SHEETS	SHEET NO.
332	D5 EAB CONTROL 2018-1	VERMILION	6	5
CONTRACT NO. 70C62				
ILLINOIS		FED. AID PROJECT		

TREE REMOVAL

VERMILION COUNTY

SOUTHBOUND ROUTE 1 STARTING AT IROQUOIS COUNTY LINE (CONT'D.)

		234	7	
		235	8	
		236	15	
		237	9	
		238	15	
		239	8	
		240	9	
		241	7	
		242	10	
		243	11	
		244	12	
		245	10	
		246	12	
	DOUBLE TRUNK	247	8	
		248	6	
		249	9	
		250	8	
		251	12	
MARKED ON PVMT.		252	12	
		253		32
		254		37
		255	7	
		256		17
		257	12	
		258	11	
		259	13	
		260	11	
		261	9	
		262	7	
		263	7	
		264		22
		265		19
	DOUBLE TRUNK	266	13	
		267	9	
		268	11	
		269		23
		270		25
		271	13	
		272	6	
		273		27
	DOUBLE TRUNK	274	6	
		275	7	
	3 TRUNKS	276	9	
		277	7	
		278	11	
	3 TRUNKS	279	10	
		280	11	
		281	14	
		282		16
		283	9	
		284	11	
		285	8	
		286	9	
		287	11	
		288	10	
		289	9	
		290	11	
		291	10	
	3 TRUNKS	292		18
		293	9	
		294	9	

VERMILION COUNTY

SOUTHBOUND ROUTE 1 STARTING AT IROQUOIS COUNTY LINE (CONT'D.)

	3 TRUNKS	295	8	
		296	9	
		297	9	
		298	6	
		299	11	
		300		32
		301	8	
		302	10	
		303	10	
		304	8	
		305		39
	3 TRUNKS	306	14	
		307	12	
		308	12	
		309	8	
		310	8	
	4 TRUNKS	311		16
		312		16
		313		17
		314	10	
		315	14	
	DOUBLE TRUNK	316		10
		317	11	
		318	9	
		319		17
		320	14	
		321	13	
	3 TRUNKS	322	15	
		323	9	
		324	9	
		325	14	
		326	8	
		327	13	
		328	12	
		329	13	
	DOUBLE TRUNKS	330	8	
		331	8	
	DOUBLE TRUNKS	332	6	
		333	7	
		334	9	
		335	11	
		336	8	
	915+00	337	9	
		338		36
		339		24
		340	10	
		341	7	
		342		17
		343		16
		344	11	
		345	11	
		346		16
	DOUBLE TRUNKS	347	10	
		348	10	
	SUBTOTAL SOUTHBOUND ROUTE 1		1145	1021

SUMMARY:

IL 1 NORTHBOUND	1243	1424
IL 1 SOUTHBOUND	1145	1021

TOTAL:	2388	2445
---------------	-------------	-------------

FILE NAME =	USER NAME = ceartokjd	DESIGNED -	REVISED -
pw:\IL084EB\INTEG\Illinois.gov\PWIDOT\Documents\DOT Offices\District 5\Projects\D570C62\CADData\CADsheets\0370\Drawings\Sheet.dgn		DRAWN -	REVISED -
\$MODELNAME\$	PLOT SCALE = 40,0000' / 1"	CHECKED -	REVISED -
	PLOT DATE = 4/26/2017	DATE -	REVISED -

**STATE OF ILLINOIS
DEPARTMENT OF TRANSPORTATION**

SCHEDULE OF QUANTITIES

SCALE: SHEET 3 OF 3 SHEETS STA. TO STA.

F.A.P. RTE.	SECTION	COUNTY	TOTAL SHEETS	SHEET NO.
332	D5 EAB CONTROL 2018-1	VERMILION	6	6
CONTRACT NO. 70C62				
ILLINOIS		FED. AID PROJECT		