

08-04-2017 LETTING ITEM 057

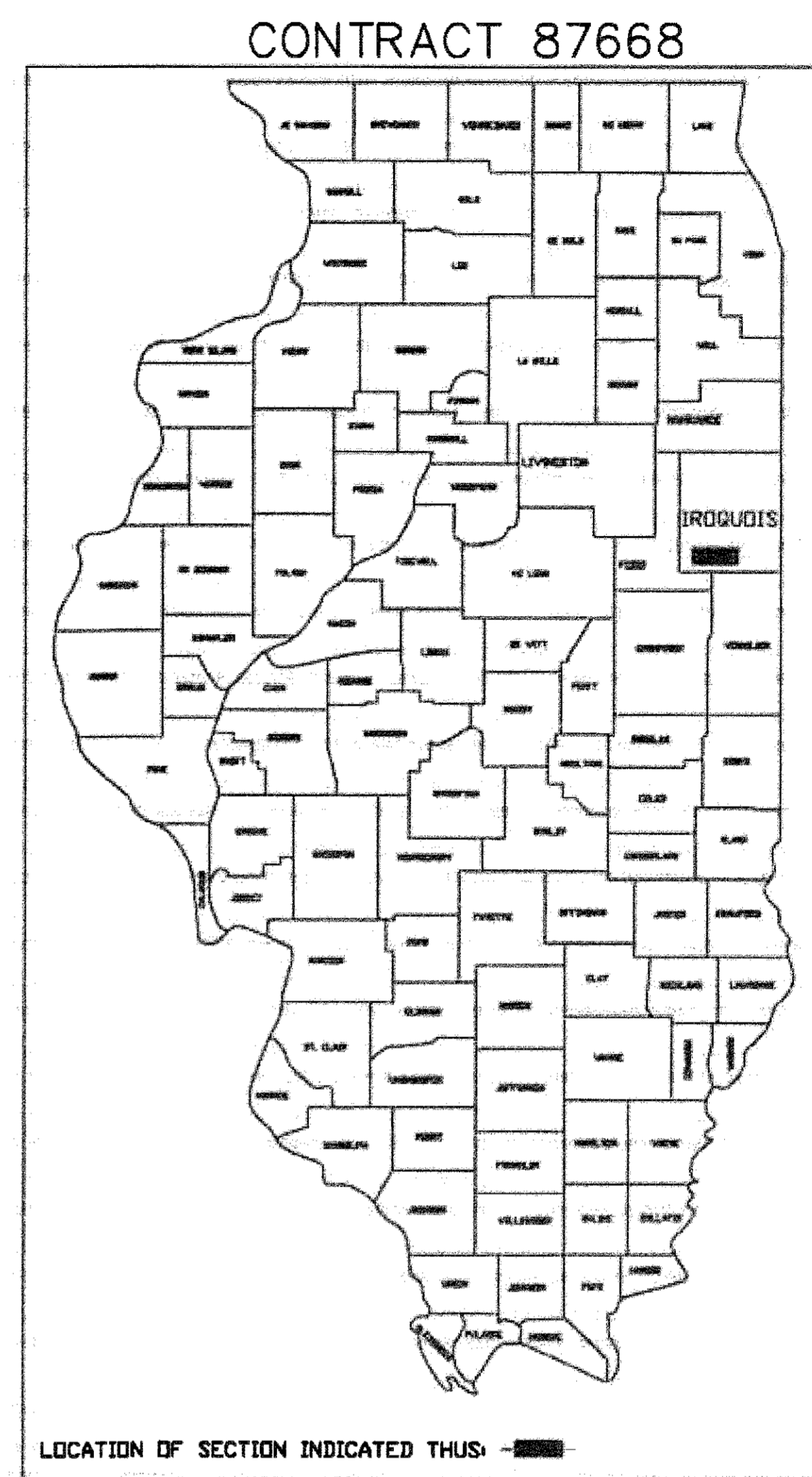
"PRINTED BY THE AUTHORITY OF THE STATE OF ILLINOIS"

STATE OF ILLINOIS
DEPARTMENT OF TRANSPORTATION
DIVISION OF HIGHWAYS

ROUTE NO. FAS 335	SECTION 16-00060-01-RS	COUNTY IROQUOIS	TOTAL SHEETS 6	SHEET NO. 1
JOB #: C-93-027-17			PROJECT #: RS-0335(115)	
CONTRACT 87668				

PLANS FOR PROPOSED IMPROVEMENT OF
FEDERAL AID SECONDARY HIGHWAY 335
SURFACE TRANSPORTATION PROGRAM - RURAL
"HMA RESURFACING PROJECT"
IROQUOIS COUNTY

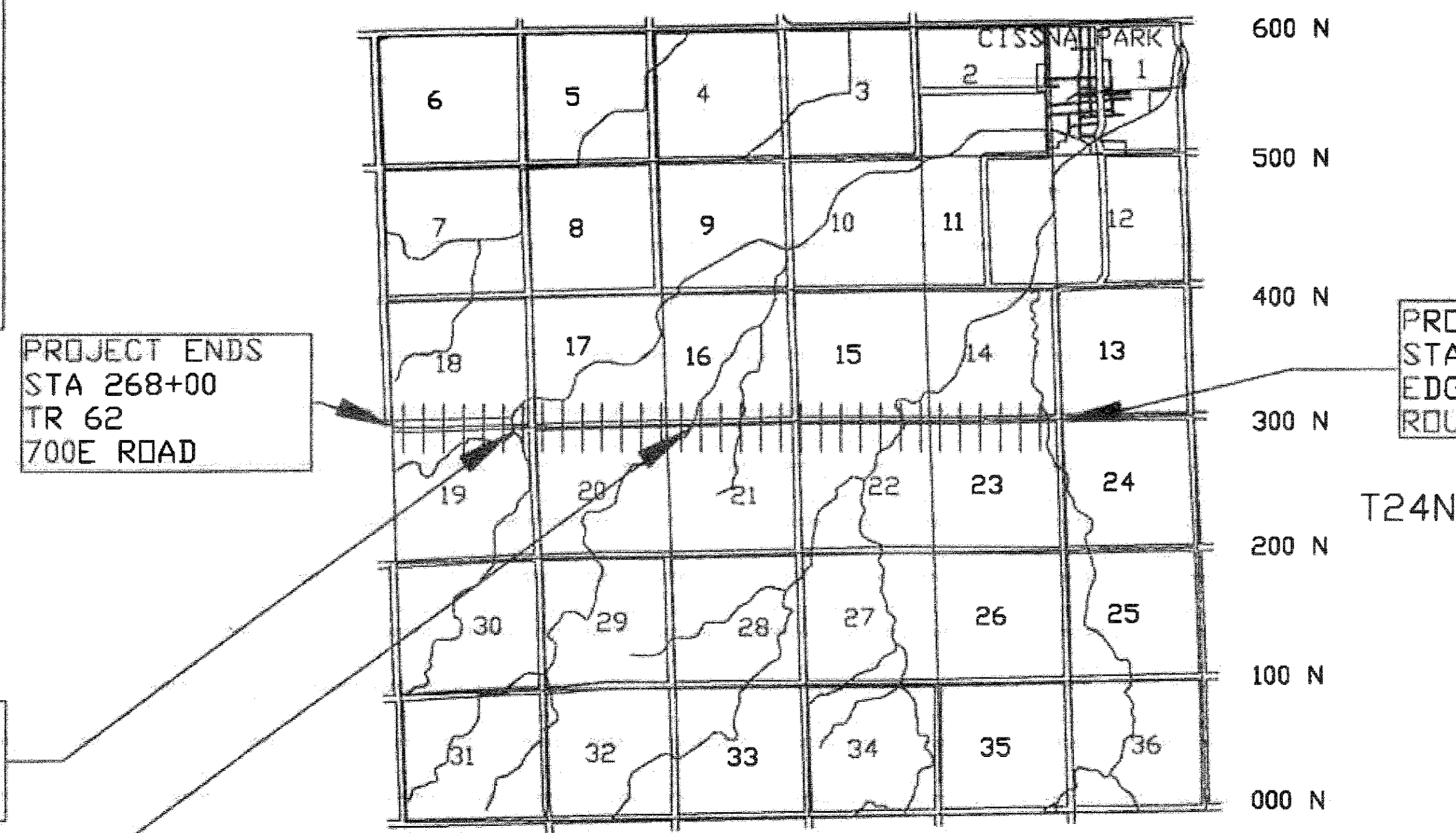
FAS ROUTE 335 (CH 10)
SECTION: 16-00060-01-RS
PROJECT NO. RS-0335(115)
JOB NO. C-93-027-17
CONTRACT NO. 87668



INDEX OF SHEETS	
SHEET NUMBER	DESCRIPTION
1	COVER SHEET -- LOCATION MAP
2	SUMMARY OF QUANTITIES, GENERAL NOTES, MIXTURE TABLE, AND BUTT JOINTS
3	EXISTING & PROPOSED X-SECTIONS
4	EXISTING & PROPOSED BRIDGE TYPICALS
5	TYPICAL ENTRANCES, SIDE ROAD INTERSECTIONS, MAIL BOX TURNOUTS & INCIDENTAL HMA SURFACING
6	QUANTITY TABLES

ILLINOIS HIGHWAY STANDARD DRAWINGS	
000001-06	SYMBOLS AND ABBREVIATIONS
701301-04	LANE CLOSURE, 2L 2W, SHORT TIME OPERATION, FOR SPEEDS > 45 MPH
701306-03	LANE CLOSURE, 2L 2W, SLOW MOVING DAY ONLY OPERATION, FOR SPEEDS > 45 MPH
701901-06	TRAFFIC CONTROL DEVICES
780001-05	TYPICAL PAVEMENT MARKINGS
BLR 24-2	MAILBOX TURNOUT

700 E 800 E 900 E 1000 E 1100 E 1200 E 1300 E

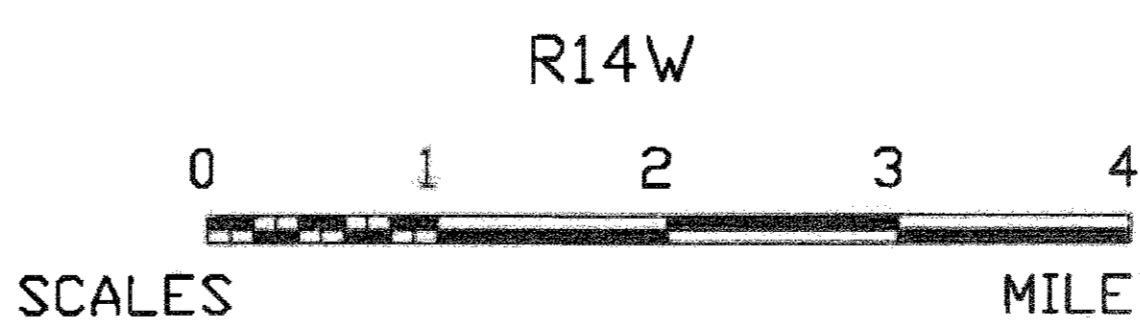


PROJECT BEGINS
STA 0+12
EDGE OF ILLINOIS
ROUTE 49

PROJECT ENDS
STA 268+00
TR 62
700E ROAD

BRIDGE OMISSION
STA 216+47 TO 217+19
S.N. 038-5110

BRIDGE OMISSION
STA 145+26 TO 145+88
S.N. 038-5111



GROSS LENGTH OF SECTION: = 26,788.00 FT. = 5.073 MI.
OMISSION LENGTH = 134.00 FT. = .025 MI.
NET LENGTH OF SECTION: = 26,654.00 FT. = 5.048 MI.

MAJOR COLLECTOR 2017 ADT = 650
PV = 88% SU = 7% MU = 5%
DESIGN SPEED = 50 M. P. H.
TOLL FREE JOINT UTILITY LOCATING
INFORMATION FOR EXCAVATORS (J. U. L. I. E.)
TELEPHONE NUMBER 1-800-892-0123

CONTRACT 87668

Approved May 19, 2017
[Signature]
County Engineer

Passed May 26, 2017
[Signature]
DISTRICT THREE LOCAL ROADS AND STREETS ENGINEER

RELEASED FOR BID
BASED ON LIMITED
REVIEW May 26, 2017
[Signature]
DEPUTY DIRECTOR OF HIGHWAYS, REGION TWO ENGINEER

STATE OF ILLINOIS
DEPARTMENT OF TRANSPORTATION



"THESE PLAN WERE PREPARED BY ME OR BY A FULL TIME MEMBER OF MY STAFF WORKING UNDER MY DIRECT SUPERVISION"

[Signature]
JOEL V. MOORE, COUNTY ENGINEER
ILL. REG. PROF. ENG. #62056831
DATE EXPIRES: 11/30/17

ROUTE NO.	SECTION	COUNTY	TOTAL SHEETS	SHEET NO.
FAS 335	16-00060-01-RS	IRROQUOIS	6	2
JOB # : C-93-027-17			PROJECT #: RS-0335 (115)	
CONTACT 87668				

SUMMARY OF QUANTITIES			FUND CODE	0005
ITEM #	PAY ITEM #	PAY ITEM	UNIT	QUANTITY
* 1	X7010216	TRAFFIC CONTROL AND PROTECTION, (SPECIAL)	L SUM	1
2	40600290	BITUMINOUS MATERIALS (TACK COAT)	POUND	49,500
3	40600627	LEVELING BINDER (MACHINE METHOD), IL-9.5FG, N50	TON	6,300
* 4	40600982	HOT-MIX ASPHALT SURFACE REMOVAL-BUTT JOINT	SQ YD	1,522
5	40600990	TEMPORARY RAMP	SQ YD	181
6	40603080	HOT-MIX ASPHALT BINDER COURSE, IL-19.0, N50	TON	9,200
7	40603310	HOT-MIX ASPHALT SURFACE COURSE, MIX 'C', N50	TON	6,200
* 8	40800050	INCIDENTAL HOT-MIX ASPHALT SURFACING	TON	345
* 9	44000155	HOT-MIX ASPHALT SURFACE REMOVAL, 1 1/2"	SQ YD	458
*10	44201723	CLASS D PATCHES, TYPE IV, 6 INCH	SQ YD	726
*11	44201803	CLASS D PATCHES, TYPE II, 13 INCH	SQ YD	137
*12	48101200	AGGREGATE SHOULDERS, TYPE B	TON	7,000
13	66700205	PERMANENT SURVEY MARKERS, TYPE 1	EACH	4
14	67100100	MOBILIZATION	L SUM	1
15	70300100	SHORT TERM PAVEMENT MARKING	FOOT	8,037
16	70300150	SHORT TERM PAVEMENT MARKING REMOVAL	SQ FT	893
17	70300220	TEMPORARY PAVEMENT MARKING-LINE 4"	FOOT	14,072
△ 18	78001110	PAINT PAVEMENT MARKING - LINE 4"	FOOT	14,072

* SEE SPECIAL PROVISIONS
 △ SPECIALTY ITEMS

GENERAL NOTES

THE THICKNESS OF HOT-MIX ASPHALT MIXTURES SHOWN ON THE TYPICAL X-SECTION IS THE NOMINAL THICKNESS. DEVIATIONS FROM THE NOMINAL THICKNESS WILL BE PERMITTED WHEN SUCH DEVIATIONS OCCUR DUE TO IRREGULARITIES IN THE EXISTING SURFACE.

THE ENGINEER SHALL BE THE SOLE JUDGE CONCERNING CURING TIME FOR THE VARIOUS HOT-MIX ASPHALT LIFTS.

FOR PAVEMENT MARKINGS ON FINAL SURFACES (I.E., MAINLINE PAVEMENT), FOR THE PAY ITEM TEMPORARY PAVEMENT MARKING LINE 4", PAVEMENT MARKING TAPE SHALL BE USED.

ANY REFERENCE TO A STANDARD IN THESE PLANS SHALL BE INTERPRETED TO MEAN THE EDITION AS INDICATED BY THE SUB-NUMBER LISTED IN THE INDEX OF SHEETS OR THE COPY OF THE STANDARD INCLUDED IN THESE PLANS.

SECTION NOTES

THE PROPOSED IMPROVEMENT CONSISTS OF A HOT MIX ASPHALT SURFACE COURSE INCLUDING LEVELING BINDER, BINDER COURSE, SHOULDER STONE AND ALL WORK NECESSARY TO COMPLETE THE PROJECT ACCORDING TO THE PLANS AND SPECIFICATIONS.

COUNTY HIGHWAY 10 IS A COMBINATION OF SECTIONS: (60-15d), (60-15d)W&RS, (60-15d)BR, BR-1, BR-2, BR-3

THE FOLLOWING RATES OF APPLICATION HAVE BEEN ASSUMED IN CALCULATING PLAN QUALITIES:		
GRANULAR MATERIALS	2.05	TONS/CU YD
BITUMINOUS MATERIALS TACK COAT	0.05/.025	LBS/SQ FT
HOT MIX ASPHALT SURFACE COURSE	112	LBS/SQ YD/INCH
LEVELING BINDER (MM), IL-9.5FG, N50	112	LBS/SQ YD/INCH
BINDER COURSE, IL-19.0, N50	112	LBS/SQ YD/INCH
SHORT TERM PAVEMENT MARKING	4	FT/40 FT OF APPLICATION
PAINT PAVEMENT MARKING - LINE 4"	10	FT/40 FT OF APPLICATION

MIXTURE TABLE

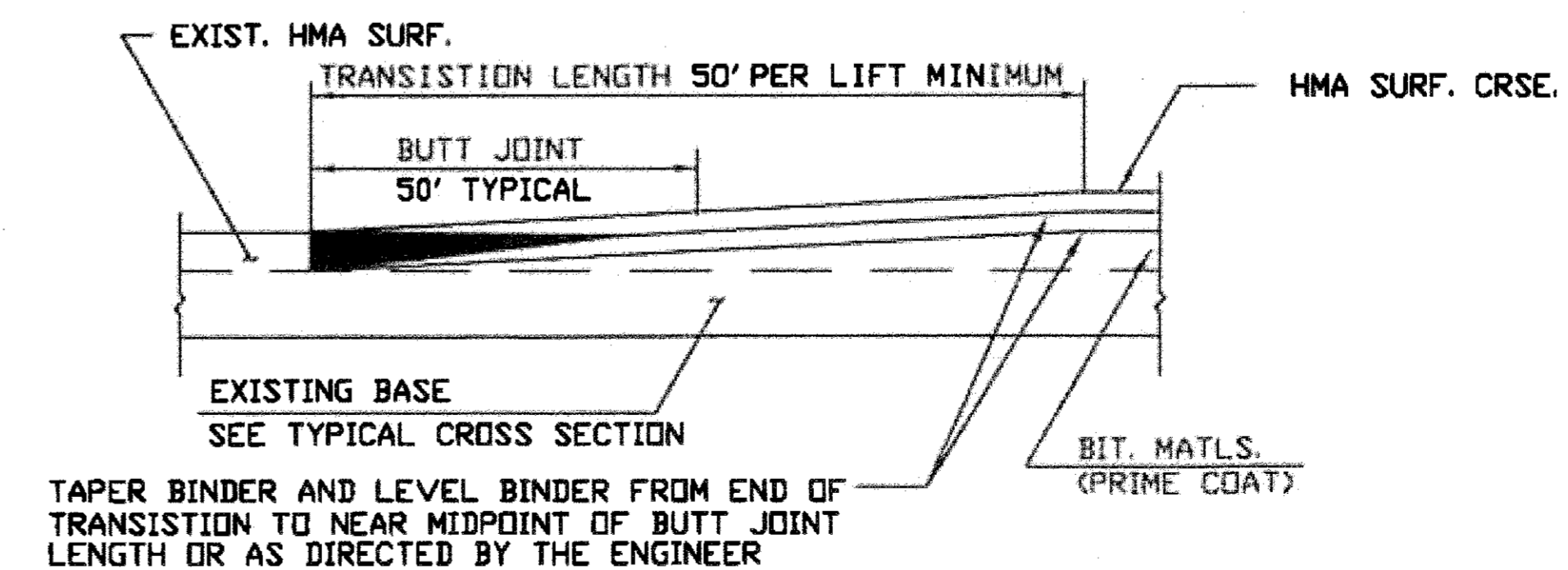
	HMA BINDER	HMA LEVEL BINDER	HMA SURFACE	INCIDENTAL HMA	HMA PATCHES
PG GRADE	PG64-22	PG64-22	PG64-22	PG64-22	PG64-22
DESIGN AIR VOIDS	4.0% @ N50	4.0% @ N50	4.0% @ N50	4.0% @ N50	4.0% @ N50
MIXTURE COMPOSITION	IL 19.0	IL 9.5FG	IL 9.5	IL 9.5	IL 19.0
FRICTION AGGREGATE			MIXTURE C	MIXTURE C	
DENSITY TEST METHOD	GROWTH CURVE	GROWTH CURVE	GROWTH CURVE	SATISFACTION OF ENGINEER	*CORES
MIXTURE WEIGHT	112#/Sq. Yd./In.	112#/Sq. Yd./In.	112#/Sq. Yd./In.	112#/Sq. Yd./In.	112#/Sq. Yd./In.
QUALITY MANAGEMENT PROGRAM	QC/QA	QC/QA	QC/QA	QC/QA	QC/QA
SUBLOT SIZE	N/A	N/A	N/A	N/A	N/A
LOCATION(S)	ENTIRE PROJECT	ENTIRE PROJECT	ENTIRE PROJECT	ENTIRE PROJECT	ENTIRE PROJECT

MATERIAL SHALL BE COMPACTED TO 93.0-97.4 PERCENT OF THE MAXIMUM THEORETICAL DENSITY, EXCEPT THAT WHEN PLACED AS FIRST LIFT ON AN UNIMPROVED SUBGRADE THE MINIMUM PERCENT COMPACTION SHALL BE 92.0 PERCENT. THE MAXIMUM THEORETICAL DENSITY SHALL BE DETERMINED FROM THE MOVING AVERAGE AS SPECIFIED IN THE QC/QA SPECIFICATION.

PAVEMENT DESIGN - CH 10

STRUCTURAL DESIGN TRAFFIC: YEAR 2027
 PV= 572 (88%) SU= 46 (7%) MU= 32 (5%)
 ROAD CLASSIFICATION CLASS III
 TRAFFIC FACTOR: ACTUAL TF = 0.17 AC TYPE = PG 64-22
 MINIMUM TF = 1.70
 PG GRADE: BINDER = PG 64-22 SURFACE = PG 64-22
 SUB GRADE SUPPORT RATING:
 IBV = 2.0 (STA. 0+12 TO 268+00)

HMA SURFACE REMOVAL BUTT JOINT DETAIL

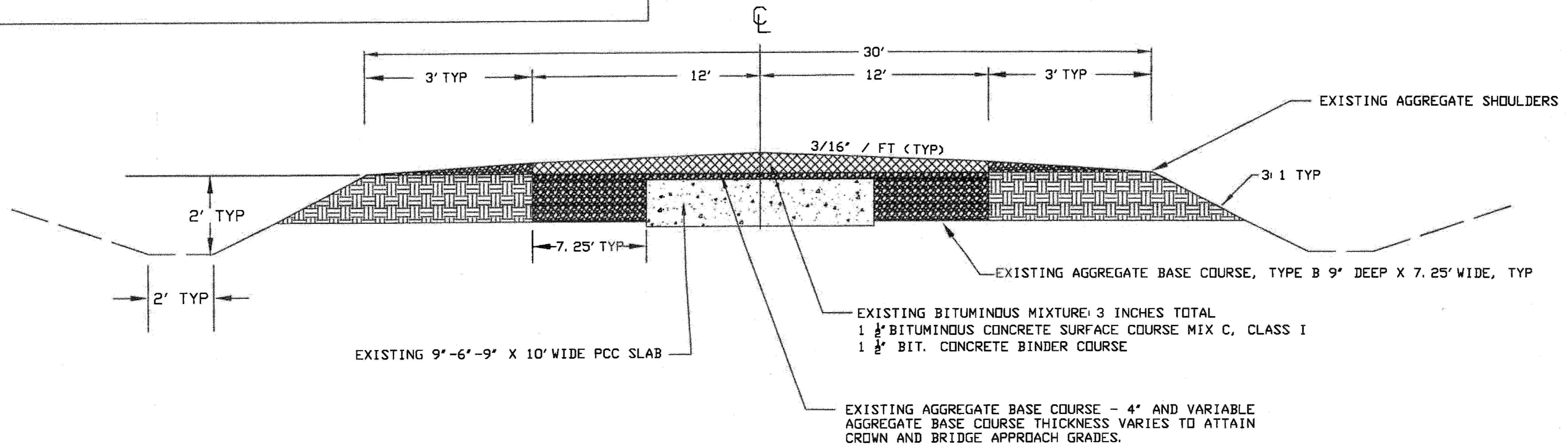


EXISTING TYPICAL SECTION

STATION 0+12 TO 268+00
 BRIDGE OMISSION - S.N. 038-5111 STATION 145+26 TO 145+88
 BRIDGE OMISSION - S.N. 038-5110 STATION 216+47 TO 217+19

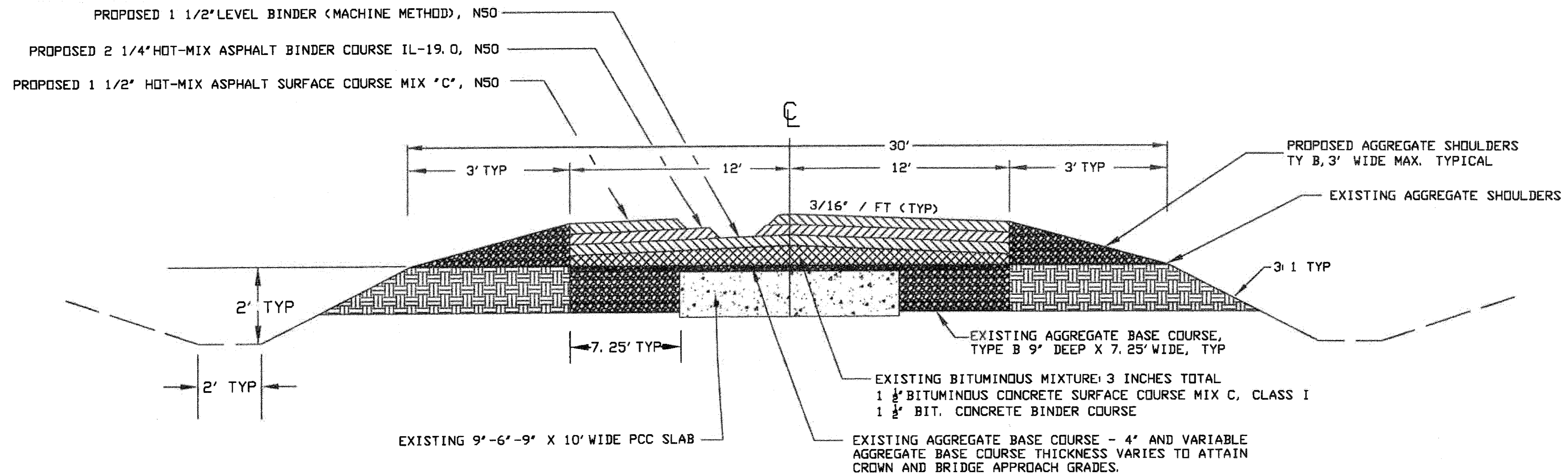
ROUTE NO.	SECTION	COUNTY	TOTAL SHEETS	SHEET NO.
FAS 335	16-00060-01-RS	IRROQUOIS	6	3
JOB #: C-93-027-17		PROJECT #: RS-0335(115)		

CONTRACT 87668



PROPOSED TYPICAL SECTION

STATION 0+12 TO 268+00
 BRIDGE OMISSION - S.N. 038-5111 STATION 145+26 TO 145+88
 BRIDGE OMISSION - S.N. 038-5110 STATION 216+47 TO 217+19

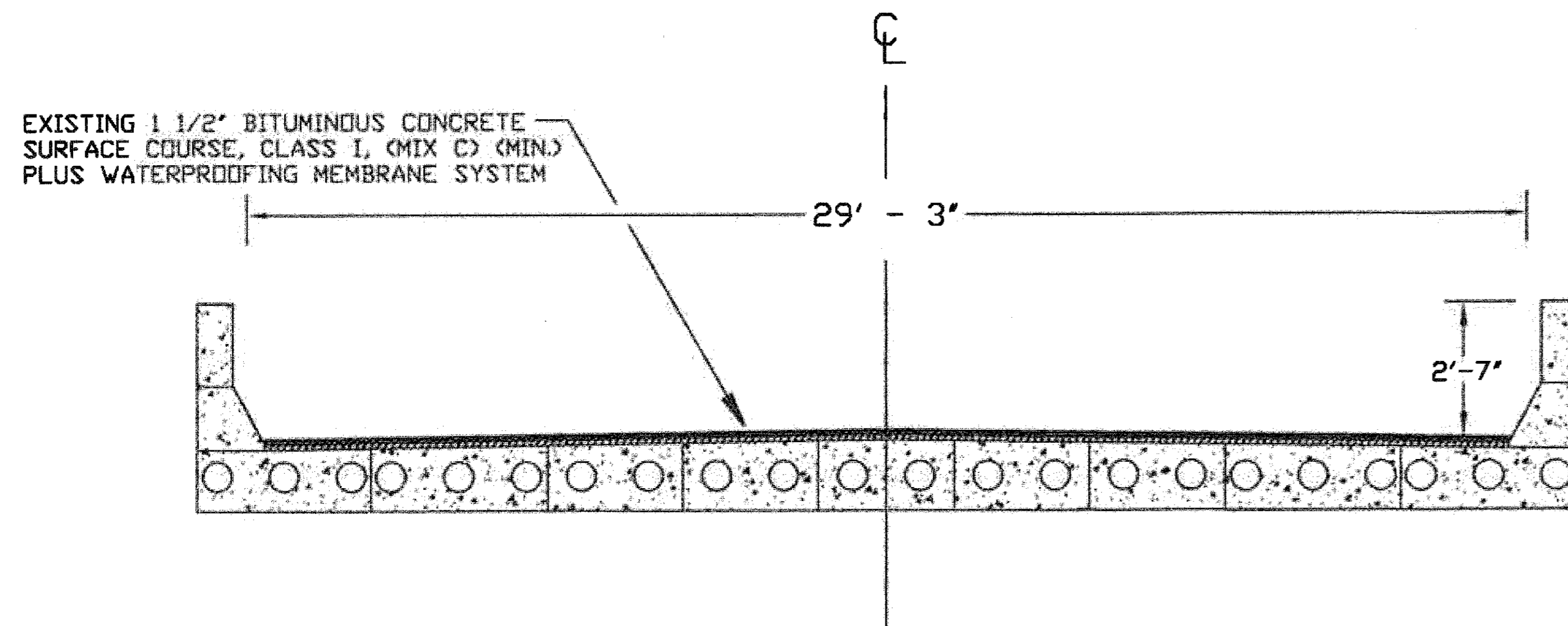


ROUTE NO. FAS 335	SECTION 16-00060-01-RS	COUNTY IROQUOIS	TOTAL SHEETS 6	SHEET NO. 4
JOB # C-93-027-17		PROJECT # RS-0335(115)		

CONTRACT 87668

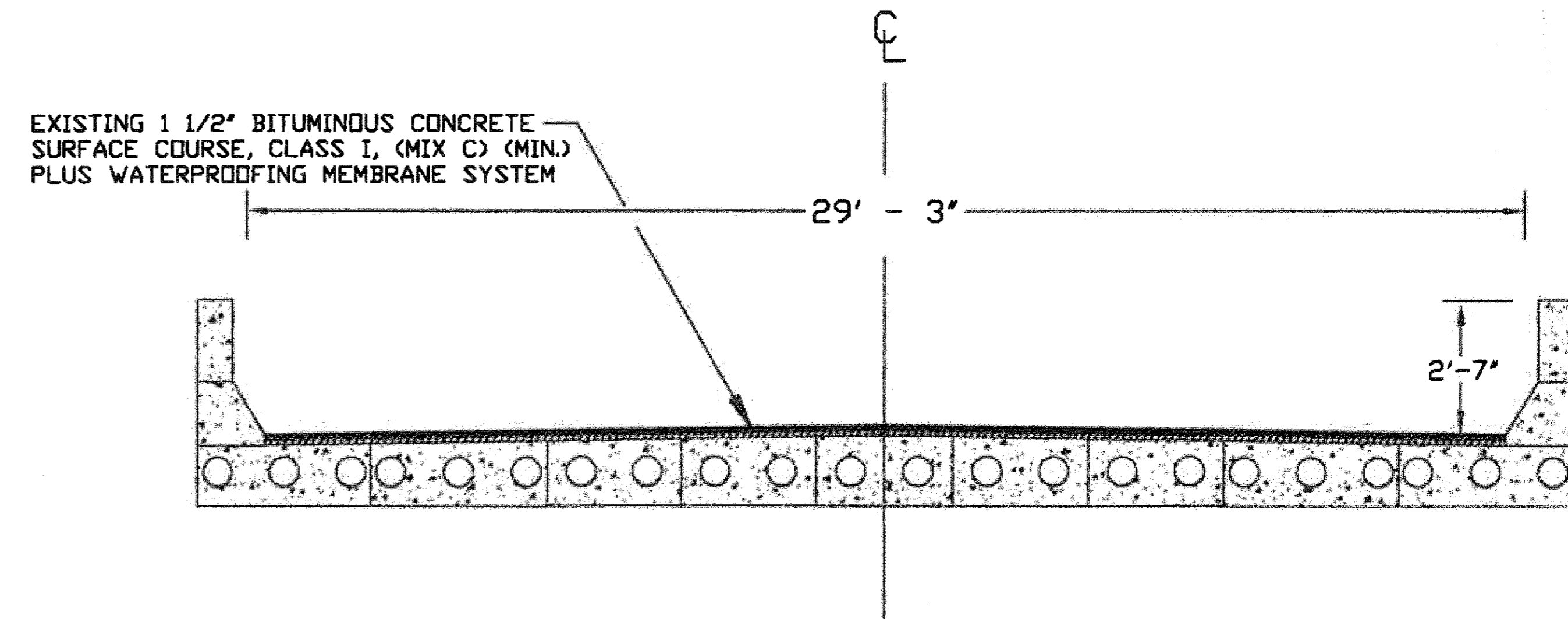
EXISTING TYPICAL SECTION
BRIDGE - S.N. 038-5113 STATION 3+91 TO 4+60

EXISTING CROSS SECTION CONSTRUCTED
AS SECTION: (60-15d BR)

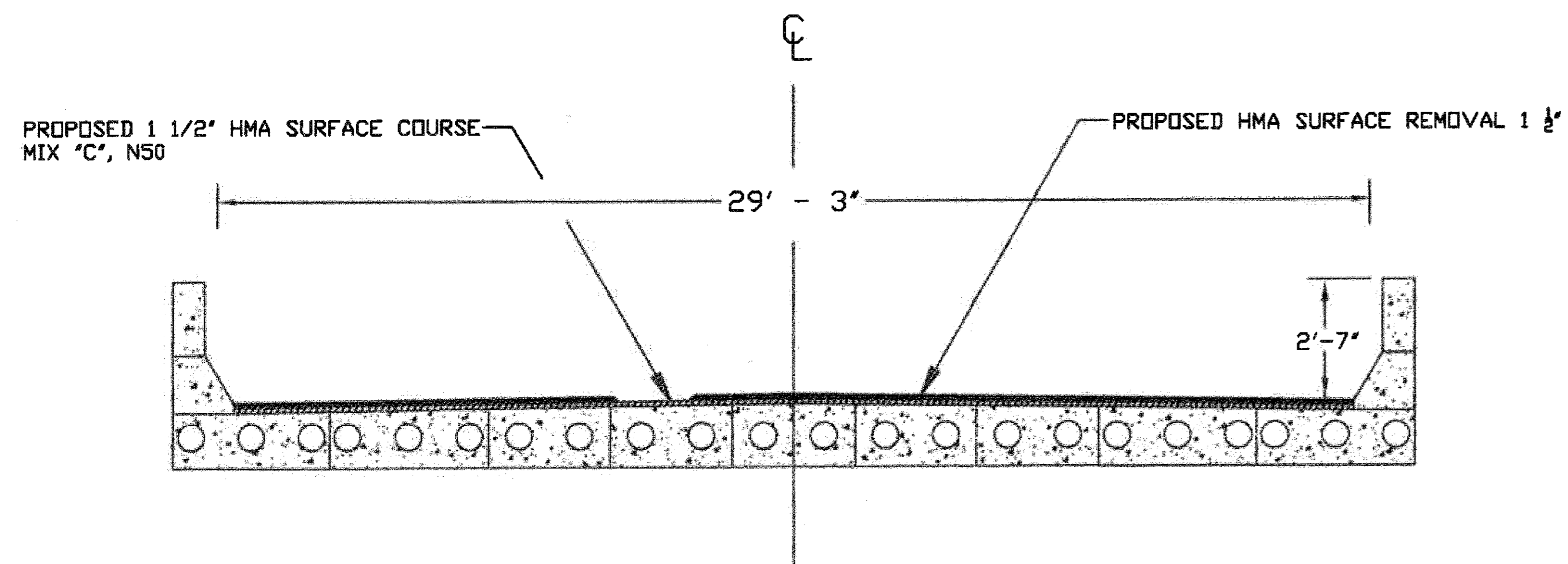


EXISTING TYPICAL SECTION
BRIDGE - S.N. 038-5112 STATION 61+41 TO 62+19

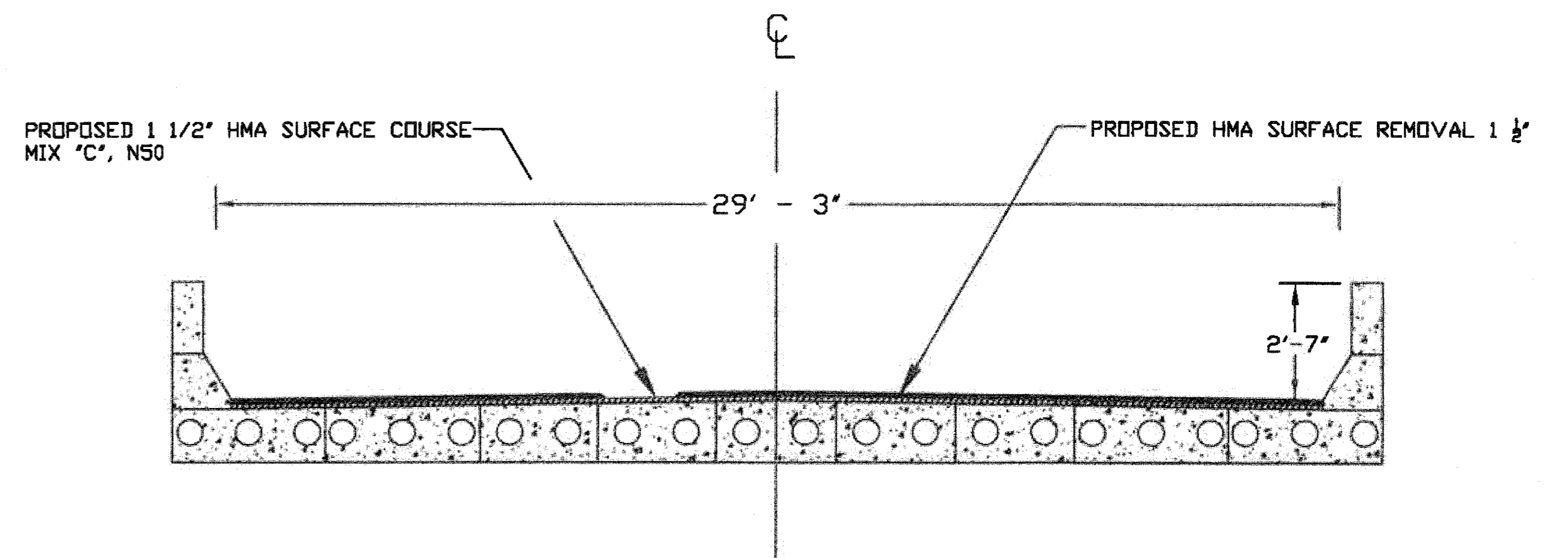
EXISTING CROSS SECTION CONSTRUCTED
AS SECTION: (60-15d BR-1)



PROPOSED TYPICAL SECTION
BRIDGE - S.N. 038-5113 STATION 3+91 TO 4+60



PROPOSED TYPICAL SECTION
BRIDGE - S.N. 038-5112 STATION 61+41 TO 62+19



48101200 - AGGREGATE SHOULDERS, TYPE B

NOTE: AGGREGATE AROUND ALL PRIVATE ENTRANCES, MAIL BOX TURNOUTS AND SIDE ROAD INTERSECTIONS SHALL BE CONSIDERED INCIDENTAL TO AGGREGATE SHOULDERS, TYPE B AND PLACED AS DIRECTED BY THE ENGINEER.

TOTAL AGGREGATE FOR FIELD ENTRANCES = 225 TONS. THIS QUANTITY IS INCLUDED IN AGGREGATE SHOULDERS, TYPE B TOTAL QUANTITY.

MAINLINE QUANTITIES

STATION TO STATION	RT/LT	PROPOSED	TON
0+12 TO 268+00	RT & LT	AGG	6,775

TYPICAL FIELD ENTRANCES

STATION	RT/LT	TYPE	PROPOSED	SQ. YD.	TON	STATION	RT/LT	TYPE	PROPOSED	SQ. YD.	TON
2+00	RT	FE	AGG	---	5	147+00	RT	FE	AGG	---	5
10+70	LT	FE	AGG	---	5	151+90	RT	FE	AGG	---	5
12+66	RT	FE	AGG	---	5	156+91	LT	FE	AGG	---	5
13+55	RT	FE	AGG	---	5	157+00	RT	FE	AGG	---	5
26+25	RT	FE	AGG	---	5	169+85	LT	FE	AGG	---	5
26+30	LT	FE	AGG	---	5	170+00	RT	FE	AGG	---	5
33+03	RT	FE	AGG	---	5	180+00	LT	FE	AGG	---	5
35+35	LT	FE	AGG	---	5	185+45	RT	FE	AGG	---	5
39+20	RT	FE	AGG	---	5	187+60	LT	FE	AGG	---	5
43+05	RT	FE	AGG	---	5	189+80	RT	FE	AGG	---	5
46+00	LT	FE	AGG	---	5	196+25	LT	FE	AGG	---	5
60+37	LT	FE	AGG	---	5	198+00	RT	FE	AGG	---	5
78+40	LT	FE	AGG	---	5	211+75	LT	FE	AGG	---	5
78+40	RT	FE	AGG	---	5	222+20	RT	FE	AGG	---	5
92+87	LT	FE	AGG	---	5	225+50	LT	FE	AGG	---	5
92+87	RT	FE	AGG	---	5	235+17	RT	FE	AGG	---	5
117+40	LT	FE	AGG	---	5	237+65	LT	FE	AGG	---	5
118+61	RT	FE	AGG	---	5	239+60	LT	FE	AGG	---	5
130+66	LT	FE	AGG	---	5	242+65	RT	FE	AGG	---	5
133+70	LT	FE	AGG	---	5	248+23	LT	FE	AGG	---	5
136+95	RT	FE	AGG	---	5	253+90	RT	FE	AGG	---	5
137+15	LT	FE	AGG	---	5	258+00	RT	FE	AGG	---	5
143+85	RT	FE	AGG	---	5						

AGGREGATE SHOULDERS, TYPE B TOTALS	
MAINLINE QUANTITIES	= 6,775 TONS
FIELD ENTRANCE QUANTITIES	= 225 TONS
TOTAL	= 7,000 TONS

ROUTE NO.	SECTION	COUNTY	TOTAL SHEETS	SHEET NO.
FAS 335	16-00060-01-RS	IROQUOIS	6	5
JOB # C-93-027-17			PROJECT # RS-0335 (115)	
CONTACT 87668				

40800050 - INCIDENTAL HMA SURFACING

TYPICAL PRIVATE ENTRANCES TYPICAL INTERSECTION - SIDE ROADS

STATION	RT/LT	TYPE	PROPOSED	SQ. YD.	TON
8+83	LT	PE	HMA	75	10
10+68	RT	PE	HMA	85	12
33+03	LT	PE	HMA	85	12
68+78	RT	PE	HMA	85	12
71+00	LT	PE	HMA	85	12
90+96	LT	PE	HMA	85	12
117+52	RT	PE	HMA	85	12
139+55	RT	PE	HMA	85	12
154+00	RT	PE	HMA	75	10
187+40	RT	PE	HMA	85	12
223+04	LT	PE	HMA	85	12
256+15	RT	PE	HMA	85	12
264+00	LT	PE	HMA	75	10
TOTAL = 150 TONS					

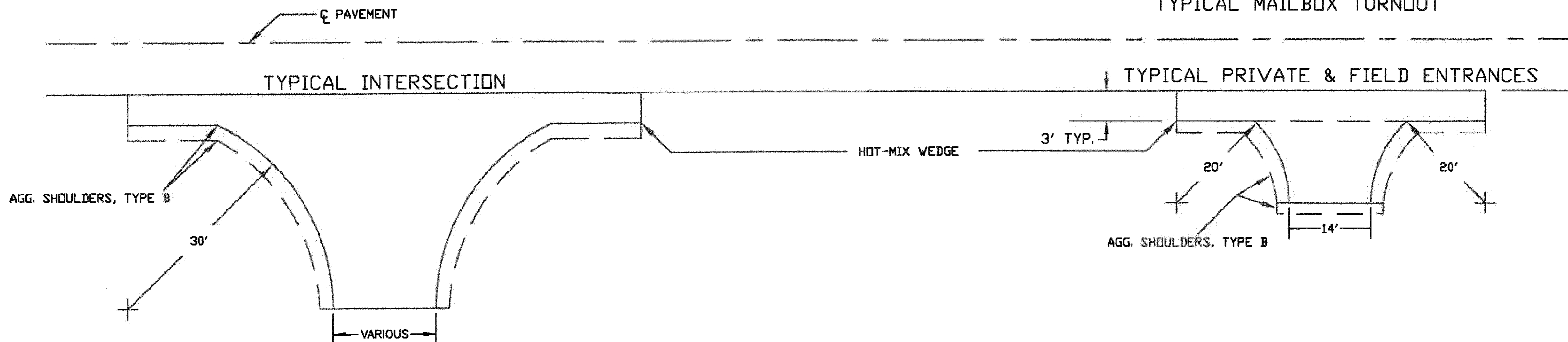
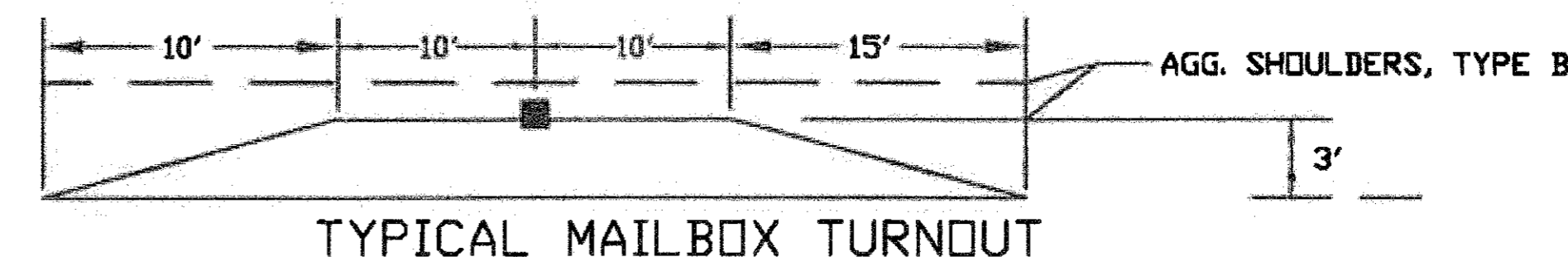
STATION	SIDE	DEPTH	SQ. YD.	TON
104+26 LT	300N 1000E	20'	100	20
104+26 RT	300N 1000E	20'	100	20
209+12 LT	300N 800E	20'	300	60
209+12 RT	300N 800E	20'	100	20
266+30 RT	300N 700E	20'	100	20
TOTALS = 140 TONS				

TYPICAL MAILBOX TURNOUT

STATION	SIDE	SQ. YD.	TON
8+83	RT	20	5
10+90	RT	20	5
33+17	RT	20	5
69+06	RT	20	5
71+30	RT	20	5
91+65	RT	20	5
116+75	RT	20	5
139+35	RT	20	5
154+17	RT	20	5
187+20	RT	20	5
256+20	LT	20	5
TOTAL = 55 TONS			

NOTE: ALL PRIVATE ENTRANCES, MAIL BOX TURNOUTS AND SIDE ROAD INTERSECTIONS SHALL BE PAID FOR AS INCIDENTAL HOT-MIX ASPHALT SURFACING = TOTAL 345 TON

INCIDENTAL HMA SURFACING TOTALS	
PRIVATE ENTRANCES	= 150 TONS
TYPICAL INT.'S & SIDE ROADS	= 140 TONS
TYPICAL MAILBOX TURNOUT	= 55 TONS
TOTAL	= 345 TONS



44201723-CLASS D PATCHES, TY IV, 6 INCH
SCHEDULE - CLASS D PATCHING 6"

STATION	EASTBOUND LANE		WESTBOUND LANE	
	PATCH		PATCH	
	TYPE IV SQ YD	TYPE IV SQ YD	TYPE IV SQ YD	PATCH LOCATION
68+10 TO 78+10 RT		77.9		ALONG CONCRETE SLAB
74+94 TO 75+75 RT		63.0		ALONG CONCRETE SLAB
154+00 TO 154+69 RT		53.8		ALONG CONCRETE SLAB
187+60 TO 188+33 RT		56.8		ALONG CONCRETE SLAB
220+62 TO 223+15 RT		196.8		ALONG CONCRETE SLAB
222+50 TO 223+40 LT	70.0			ALONG CONCRETE SLAB
224+84 TO 225+56 LT	56.0			ALONG CONCRETE SLAB
264+25 TO 266+20 RT		151.7		ALONG CONCRETE SLAB
TOTALS	126.0	600.0		
TYPE IV TOTALS	= 726.0 SQ YD			

44000155
HMA SURFACE REMOVAL 1 1/2"

STATION TO STATION	SQ. YDS.
3+91 TO 4+60	215.00
61+41 TO 62+19	243.00
TOTAL =	458.00

66700205
PERMANENT SURVEY
MARKERS

STATION	EACH
52+17	1.0
78+23	1.0
104+26	1.0
209+12	1.0
TOTAL =	4.0

40600982
HMA SURFACE REMOVAL
BUTT JOINT

STATION TO STATION	SQ. YDS.
0+12	257.00
3+41 TO 3+91	134.0
4+60 TO 5+10	134.0
60+91 TO 61+41	134.0
62+19 TO 62+69	134.0
144+76 TO 145+26	134.0
145+88 TO 146+38	134.0
209+12 LT	59.0
215+97 TO 216+47	134.0
217+19 TO 217+69	134.0
267+50 TO 268+00	134.0
TOTAL =	1,522.0

40600990
TEMPORARY RAMP

STATION	SQ. YDS.
0+12	49.0
3+91	16.0
4+60	16.0
61+41	16.0
62+19	16.0
145+26	8.0
145+88	8.0
209+12 LT	25.0
216+47	8.0
217+19	8.0
268+00	11.0
TOTAL =	181.0

78001110 - PAINT PAVEMENT MARKING - LINE 4"
70300220 - TEMPORARY PAVEMENT MARKING

TYPE	STATION TO STATION	FEET	LINE 4'
	CENTERLINE		
SKIP DASH	0+12 TO 202+00	20,188'	5,047.0'
SKIP DASH	251+00 TO 268+00	1,700'	425.0'
	TOTAL =		5,472.0'
	NO PASSING ZONE		
SINGLE NO PASS & SKIP DASH	202+00 TO 210+00 RT	800.0'	1000.0'
DOUBLE NO PASS	210+00 TO 243+00 LT & RT	3,300.0'	6,600.0'
SINGLE NO PASS & SKIP DASH	243+00 TO 251+00 LT	800.0'	1000.0'
	TOTAL =		8,600.0'

TOTAL ALL STRIPING FOR PAINT
PAVEMENT MARKING LINE 4' = 14,072.0'
TOTAL FOR TEMPORARY PAVEMENT MARKING = 14,072.0'

PAVEMENT SCHEDULE

PAY ITEM	40600627	40603080	40603310	48101200	40600290
UNIT	(TON)	(TON)	(TON)	(TON)	(POUND)
STATION TO STATION	LEVEL BINDER (MM) IL-9.5 FG, N50	HMA BINDER COURSE IL-19.0, N50	HMA SURFACE COURSE MIX 'C' N50	AGGREGATE SHOULDERS TYPE B	BITUMINOUS MATERIALS (TACK COAT)
0+50 TO 267+50	6,300				24,750
0+30 TO 267+75		9,200			12,375
0+12 TO 268+00			6,200	7,000	12,375
TOTAL =	6,300	9,200	6,200	7,000	49,500

44201803-CLASS D PATCHES, TY II, 13 INCH
SCHEDULE - CLASS D PATCHING 13"

STATION	EASTBOUND LANE		WESTBOUND LANE	
	PATCH		PATCH	
	TYPE II SQ YD	TYPE II SQ YD	TYPE II SQ YD	PATCH LOCATION
47+12 RT		8.2		THRU CONCRETE SLAB
47+12 LT	8.2			THRU CONCRETE SLAB
51+17 RT		6.7		THRU CONCRETE SLAB
51+17 LT	6.7			THRU CONCRETE SLAB
55+72 RT		6.7		THRU CONCRETE SLAB
55+72 LT	6.7			THRU CONCRETE SLAB
80+82 RT		6.7		THRU CONCRETE SLAB
80+82 LT	6.7			THRU CONCRETE SLAB
106+00 RT		6.7		THRU CONCRETE SLAB
106+00 LT	6.7			THRU CONCRETE SLAB
119+31 RT		6.7		THRU CONCRETE SLAB
119+31 LT	6.7			THRU CONCRETE SLAB
138+02 RT		6.7		THRU CONCRETE SLAB
138+02 LT	6.7			THRU CONCRETE SLAB
154+75 RT		6.7		THRU CONCRETE SLAB
154+75 LT	6.7			THRU CONCRETE SLAB
164+41 RT		6.7		THRU CONCRETE SLAB
164+41 LT	6.7			THRU CONCRETE SLAB
171+96 RT		6.7		THRU CONCRETE SLAB
171+96 LT	6.7			THRU CONCRETE SLAB
TOTALS	68.5	68.5		
TYPE II TOTALS	= 137.0 SQ YD			