

F.A.P. RTE.	SECTION	COUNTY	TOTAL SHEETS	SHEET NO.
326	(119)PP	GRUNDY	24	1
		ILLINOIS	CONTRACT NO. 66H32	

STATE OF ILLINOIS
DEPARTMENT OF TRANSPORTATION

**PROPOSED
HIGHWAY PLANS**

F.A.P. ROUTE 326 (IL 47)
SECTION (119)PP
PAVEMENT PATCHING
GRUNDY COUNTY

1. COVER SHEET
2. GENERAL NOTES
- 3 - 5. SUMMARY OF QUANTITIES
6. TYPICAL SECTIONS
- 7 - 10. SCHEDULES
- 11 - 12. INTERSECTION STAGING DETAILS
- 13 - 16. SUGGESTED TURNING MOVEMENTS FOR STAGE CONSTRUCTION
17. PAVEMENT MARKING DETAILS
18. DETECTOR LOOP DETAILS
- 19 - 21. EXISTING TRAFFIC SIGNAL PLAN - FOR INFORMATION ONLY
22. TEMPORARY INFORMATION SIGNING
- 23 - 24. CLASS B PATCHING DETAILS

STANDARDS

- 000001-06 STANDARD SYMBOLS, ABBREVIATIONS AND PATTERNS
- 001006 DECIMAL OF AN INCH AND OF A FOOT
- 420001-08 PAVEMENT JOINTS
- 420701-03 PAVEMENT WELDED WIRE REINFORCEMENT
- 606301-04 PC CONCRETE ISLANDS AND MEDIANS
- 701101-05 OFF-ROAD OPERATIONS, MULTILANE, 15' (4.5 m) TO 24' (600 mm) FROM PAVEMENT EDGE
- 701301-04 LANE CLOSURE, 2L, 2W, SHORT TIME OPERATIONS
- 701601-09 URBAN LANE CLOSURE, MULTILANE, 1W OR 2W WITH NONTRAVERSABLE MEDIAN
- 701602-08 URBAN LANE CLOSURE, MULTILANE, 2W WITH BIDIRECTIONAL LEFT TURN LANE
- 701901-06 TRAFFIC CONTROL DEVICES
- 886001-01 DETECTOR LOOP INSTALLATIONS
- 886006-01 TYPICAL LAYOUT FOR DETECTION LOOPS
- 701001-02 OFF-RD OPERATIONS, 2L, 2W, MORE THAN 15' (4.5m) AWAY
- 701006-05 OFF-RD OPERATIONS, 2L, 2W, 15' (4.5m) TO 24' (600mm) FROM PAVEMENT EDGE

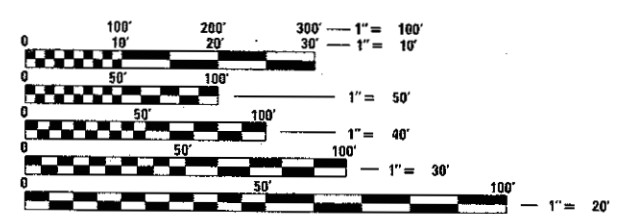
C-93-069-17

NORTH MAINLINE IMPROVEMENT LIMITS

(CONCRETE JOINT +/-460 FEET
NORTH OF THE NORTH RAMPS.)
NB ENDS AT L.M. 0.54
SB BEGINS AT L.M. 0.00

SOUTH MAINLINE IMPROVEMENT LIMITS

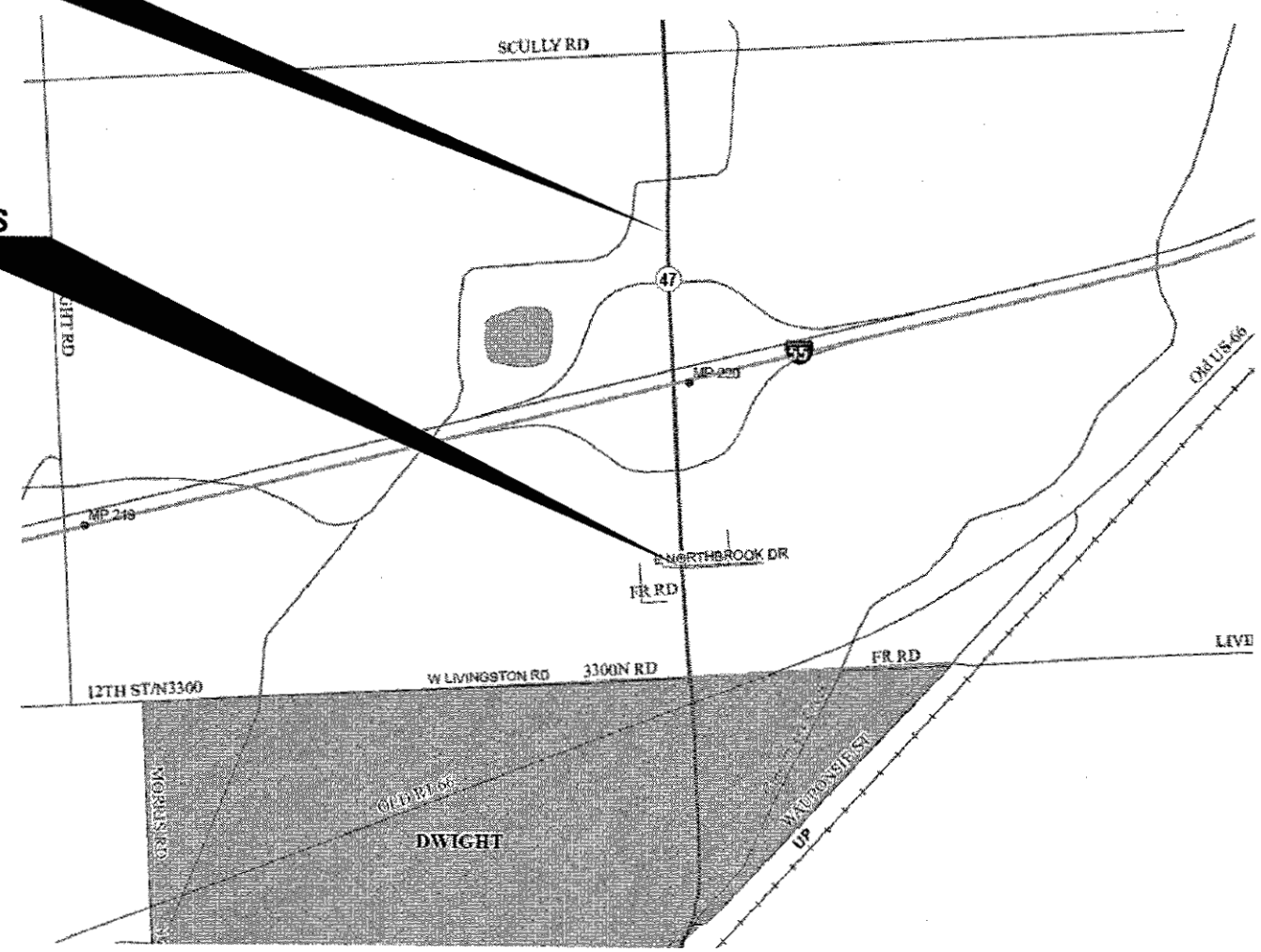
NORTH SIDE OF IL 47 AND
NORTHBROOK DR. INTERSECTION
NB BEGINS AT L.M. 0.00
SB ENDS AT L.M. 0.54



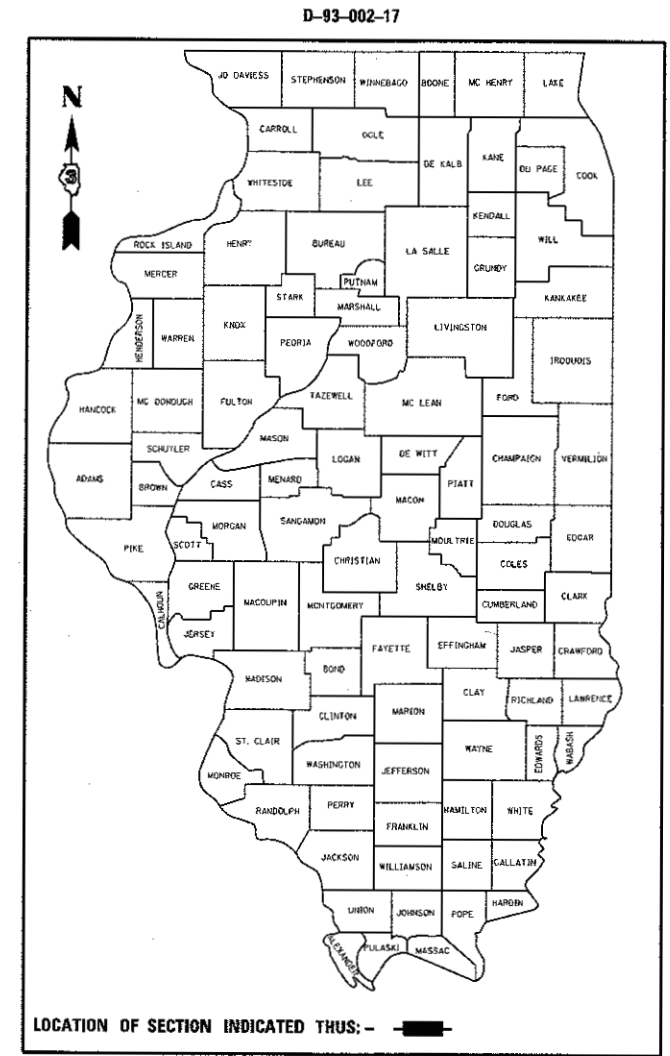
FULL SIZE PLANS HAVE BEEN PREPARED USING STANDARD ENGINEERING SCALES. REDUCED SIZED PLANS WILL NOT CONFORM TO STANDARD SCALES. IN MAKING MEASUREMENTS ON REDUCED PLANS, THE ABOVE SCALES MAY BE USED.

J.U.L.I.E.
JOINT UTILITY LOCATION INFORMATION FOR EXCAVATION
1-800-892-0123
OR 811

DISTRICT NO. 3 PHONE: (815)434-6131
PROJECT ENGINEER: JOE KANNEL P.E.
UNIT CHIEF: RON WOODSHANK
CONTRACT NO. 66H32



GROSS LENGTH = 2851 FT. = 0.54 MILE
NET LENGTH = 924 FT. = 0.17 MILE



FUNCTIONAL CLASSIFICATION
RURAL - OTHER ARTERIAL
FAP 326 IL 47)
2015 ADT 7650
P.V. 65.4% S.U. 8.5% M.U. 26.1%

STATE OF ILLINOIS
DEPARTMENT OF TRANSPORTATION
SUBMITTED May 25 2017
[Signature]
REGIONAL ENGINEER
June 30 2017
Harvey H. Addis, P.E.
ENGINEER OF DESIGN AND ENVIRONMENT
June 30 2017
[Signature]
DIRECTOR OF PROGRAM DEVELOPMENT

PRINTED BY THE AUTHORITY
OF THE STATE OF ILLINOIS

GENERAL NOTES

PLAN DIMENSIONS AND DETAILS RELATIVE TO EXISTING PLANS ARE SUBJECT TO NOMINAL CONSTRUCTION VARIATIONS. THE CONTRACTOR SHALL FIELD VERIFY EXISTING DIMENSIONS AND DETAILS AFFECTING NEW CONSTRUCTION AND MAKE NECESSARY APPROVED ADJUSTMENTS PRIOR TO CONSTRUCTION OR ORDERING OF MATERIALS. SUCH VARIATIONS SHALL NOT BE CAUSE FOR ADDITIONAL COMPENSATION FOR A CHANGE IN SCOPE OF WORK; HOWEVER, THE CONTRACTOR WILL BE PAID FOR THE QUANTITY ACTUALLY FURNISHED AT THE UNIT PRICE BID FOR THE WORK.

ALL EXCAVATED MATERIAL, WHICH INCLUDES DIGGING OR GRADING OF ANY SOIL OR FILL MATERIAL, WITH THE EXCEPTION OF AGGREGATE FILLS, MUST BE INCORPORATED WITHIN THE IDOT RIGHT OF WAY DUE TO ENVIRONMENTAL DOCUMENTATION REQUIREMENTS.

ANY REFERENCE TO A STANDARD IN THESE PLANS SHALL BE INTERPRETED TO MEAN THE EDITION AS INDICATED BY THE SUBNUMBER SHOWN IN THE LIST OF STANDARDS OR THE COPY INCLUDED IN THESE PLANS.

THE CONTRACTOR SHALL CONTACT JULIE AT LEAST 48 HOURS PRIOR TO EXCAVATION TO DETERMINE WHICH UTILITIES ARE IN THE AREA.

COMMITMENTS

ILL. ROUTE 47 LOCATION: 460' N OF N RAMPS AT I-55 TO NORTHBROOK DR					GRUNDY COUNTY
INDEX NUMBER	DESCRIPTION	EXISTING MONUMENT TYPE	PROPOSED MONUMENT TYPE	MONUMENT RECORD TO BE RECORDED	RESPONSIBILITY
055001	WEST QTR CORNER SECTION 34, T31N, R7E, 3RD PM	NAIL STEM	TYPE 1	YES *	1

THE LISTED MONUMENT LOCATION AND EXISTING TIES HAVE BEEN RECORDED BY GPS. PRE CONSTRUCTION TIES BY THE R.E. ARE NOT REQUIRED. THE R.E. MUST TIE AND BRING TO THE ATTENTION OF THE PLATS AND PLANS MANAGER ANY ADDITIONAL UNLISTED MONUMENTS FOUND. UPON COMPLETION OF PATCHING, THE R.E. WILL DIRECT THE PLATS AND PLANS MANAGER TO HAVE AN IDOT LAND SURVEYOR INSPECT THE MONUMENT, AND IF MISSING TO MARK THE LOCATION FOR TYPE 1 PSM CORING.

- THE EXISTING MONUMENT RECORD TIES ARE OUTDATED. IF MONUMENT REPLACEMENT IS NEEDED, A NEW MONUMENT RECORD WILL BE FILED BY IDOT AFTER THE PATCHING JOB IS COMPLETE.

RESPONSIBILITY:

- 1) RESIDENT TO RE-ESTABLISH MONUMENT (PAY ITEM REQUIRED. PERMANENT SURVEY MARKER, TYPE 1)
- 2) PLATS AND PLANS TO RE-ESTABLISH MONUMENT

STATE OF ILLINOIS
DEPARTMENT OF TRANSPORTATION
DISTRICT THREE
AS BUILT INFORMATION

DATE: 5-25-17

SUPERVISING CONSTRUCTION FIELD ENGINEER

RESIDENT ENGINEER / TECHNICIAN

START & END DATES
OF CONSTRUCTION:

INSPECTORS:

PREPARED BY: *Don Beniel*
DISTRICT STUDIES & PLANS ENGINEER

EXAMINED BY: *John Campbell*
DISTRICT CONSTRUCTION ENGINEER

Michael A. Short
DISTRICT MATERIALS ENGINEER

Jan Hefner
DISTRICT OPERATIONS ENGINEER

FILE NAME =	USER NAME = woodahenkrj	DESIGNED - RW	REVISED -	STATE OF ILLINOIS DEPARTMENT OF TRANSPORTATION	GENERAL NOTES	F.A.P. RTE.	SECTION	COUNTY	TOTAL SHEETS	SHEET NO.	
Default	Documents\IDOT Offices\District 3\Projects\0364\Drawings\0364\0364.dgn	CHECKED - EP	REVISED -			326	(119)PP	GRUNDY	24	2	
	PLOT SCALE = 100.0000' / in.	DATE - 3/6/2017	REVISED -			SCALE: SHEET 1 OF 1 SHEETS STA. TO STA.		CONTRACT NO. 66H32			
	PLOT DATE = 5/25/2017					ILLINOIS FED. AID PROJECT					

CODE NO.	ITEM	UNIT	TOTAL QUANTITY	CONSTR. CODE
				CONT. MAINT.
				100% STATE
				ROADWAY
				0005 ✓
				RURAL ✓
20200100	EARTH EXCAVATION	CU YD	156	156
35101600	AGGREGATE BASE COURSE, TYPE B 4"	SQ YD	103	103
44000500	COMBINATION CURB AND GUTTER REMOVAL	FOOT	556	556
44200050	WELDED WIRE REINFORCEMENT	SQ YD	2714	2714
44200956	CLASS B PATCHES, TYPE II, 9 INCH	SQ YD	810	810
44200962	CLASS B PATCHES, TYPE III, 9 INCH	SQ YD	122	122
44200964	CLASS B PATCHES, TYPE IV, 9 INCH	SQ YD	2280	2280
44201299	DOWEL BARS 1 1/2"	EACH	2493	2493
44213200	SAW CUTS	FOOT	12865	12865
44213204	TIE BARS 3/4"	EACH	1164	1164
50800205	REINFORCEMENT BARS, EPOXY COATED	POUND	5950	5950
* 66700205	PERMANENT SURVEY MARKERS, TYPE I	EACH	1	1
67100100	MOBILIZATION	LSUM	1	1
70102630	TRAFFIC CONTROL AND PROTECTION, STANDARD 701601	LSUM	1	1

14

* SPECIALTY ITEMS

FILE NAME =	USER NAME = woodshankr1	DESIGNED - RW	REVISED -	STATE OF ILLINOIS DEPARTMENT OF TRANSPORTATION	SUMMARY OF QUANTITIES			F.A.P. RTE.	SECTION	COUNTY	TOTAL SHEETS	SHEET NO.
pw:\IL\084EBID\INTEG\Illinois.gov\FWIDOT\Documents\IDOT Offices\District 3\Projects\0366\Drawings\0366H\RW\Details.dgn	PLLOT SCALE = 100.0000' / in.	CHECKED - EP	REVISED -					326	(119)PP	GRUNDY	24	3
Default	PLOT DATE = 5/25/2017	DATE - 3/6/2017	REVISED -		SCALE:	SHEET 1 OF 3 SHEETS	STA. TO STA.	ILLINOIS FED. AID PROJECT CONTRACT NO. 66H32				
REV												

CONSTR. CODE
 CONT. MAINT.
 100% STATE
 ROADWAY
 0005
 RURAL

CODE NO.	ITEM	UNIT	TOTAL QUANTITY	
70102632	TRAFFIC CONTROL AND PROTECTION, STANDARD 701602	LSUM	1	1
70103815	TRAFFIC CONTROL SURVEILLANCE	CAL DA	20	20
70200100	NIGHTTIME WORK ZONE LIGHTING	LSUM	1	1
70300100	SHORT TERM PAVEMENT MARKING	FOOT	94	94
70300150	SHORT TERM PAVEMENT MARKING REMOVAL	SO FT	31	31
* 78008200	POLYUREA PAVEMENT MARKING TYPE I - LETTERS AND SYMBOLS	SO FT	16	16
* 78008210	POLYUREA PAVEMENT MARKING TYPE I - LINE 4"	FOOT	1283	1283
* 78008230	POLYUREA PAVEMENT MARKING TYPE I - LINE 6"	FOOT	60	60
* 78008240	POLYUREA PAVEMENT MARKING TYPE I - LINE 8"	FOOT	100	100
* 78008250	POLYUREA PAVEMENT MARKING TYPE I - LINE 12"	FOOT	143	143
* 78008270	POLYUREA PAVEMENT MARKING TYPE I - LINE 24"	FOOT	46	46
* 78100100	RAISED REFLECTIVE PAVEMENT MARKER	EACH	12	12
* 81028370	UNDERGROUND CONDUIT, PVC, 3" DIA.	FOOT	55	55
* 81028390	UNDERGROUND CONDUIT, PVC, 4" DIA.	FOOT	74	74

* SPECIALTY ITEMS

FILE NAME =	USER NAME = woodshankr1	DESIGNED - RW	REVISED -	STATE OF ILLINOIS DEPARTMENT OF TRANSPORTATION	SUMMARY OF QUANTITIES		F.A.P. RTE.	SECTION	COUNTY	TOTAL SHEETS	SHEET NO.
pc:\IL084EBI\INTEG\illinois.gov\IDOT\Documents\IDOT Offices\District 3\Projects\0366-DRAWING\B366HW\B366HW.dgn	DRAWN	REVISION	326				(119)PP	GRUNDY	24	4	
Default	PLOT SCALE = 100.0000 ' / in.	CHECKED - EP	REVISION		SCALE: SHEET 2 OF 3 SHEETS STA. TO STA.		CONTRACT NO. 66H32		ILLINOIS FED. AID PROJECT		
	PLOT DATE = 5/25/2017	DATE - 3/6/2017	REVISION								

REV

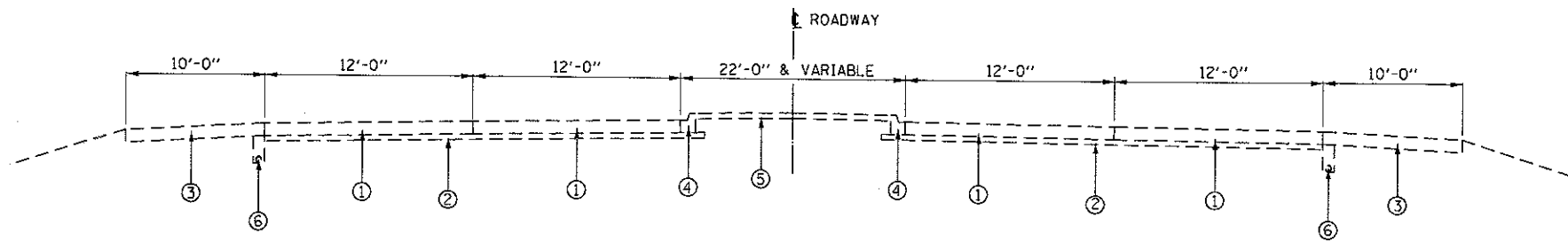
CONSTR. CODE
CONT. MAINT.
100% STATE
ROADWAY
0005
RURAL

CODE NO.	ITEM	UNIT	TOTAL QUANTITY	
* 87900200	DRILL EXISTING HANDHOLE	EACH	6	6
* 88500100	INDUCTIVE LOOP DETECTOR	EACH	1	1
* 88600100	DETECTOR LOOP, TYPE I	FOOT	707	707
* 88600700	PREFORMED DETECTOR LOOP	FOOT	2051	2051
* 89502210	MODIFY EXISTING CONTROLLER CABINET	EACH	1	1
* 89502300	REMOVE ELECTRIC CABLE FROM CONDUIT	FOOT	250	250
X4402020	CONCRETE MEDIAN SURFACE REMOVAL	SO FT	1230	1230
X6060714	CONCRETE MEDIAN (SPECIAL)	SO FT	2803	2803
X6061305	CONCRETE MEDIAN SURFACE, SPECIAL	SO FT	1689	1689
* X8860100	LOOP DETECTOR TESTING	EACH	1	1
* X8860401	RESEAL DETECTOR LOOP, TYPE I	FOOT	1360	1360
Z0017099	DOWEL BAR ASSEMBLY	EACH	44	44
Z0019307	HOLES DRILLED	EACH	5	5
Z0030850	TEMPORARY INFORMATION SIGNING	SO FT	42	42

* SPECIALTY ITEMS

14

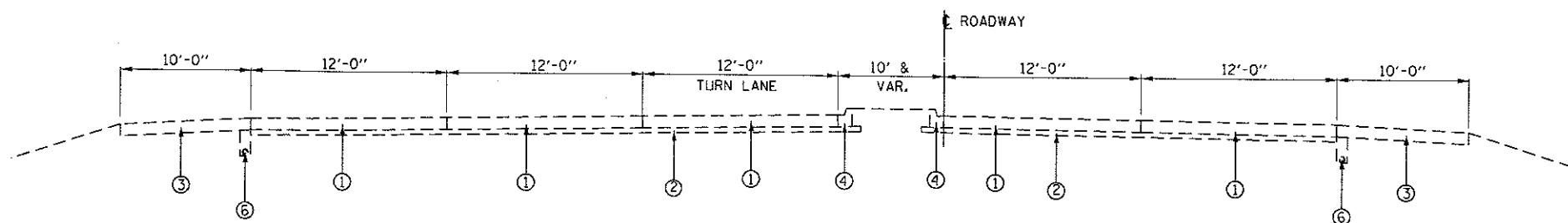
REV



TYPICAL SECTION 1

L.M. 0.05 – L.M. 0.15
 L.M. 0.23 – L.M. 0.28
 L.M. 0.33 – L.M. 0.38
 L.M. 0.45 – L.M. 0.54

BRIDGE OMISSION
 L.M. 0.28 – 0.33 (O. TO O. APPROACH SLABS)

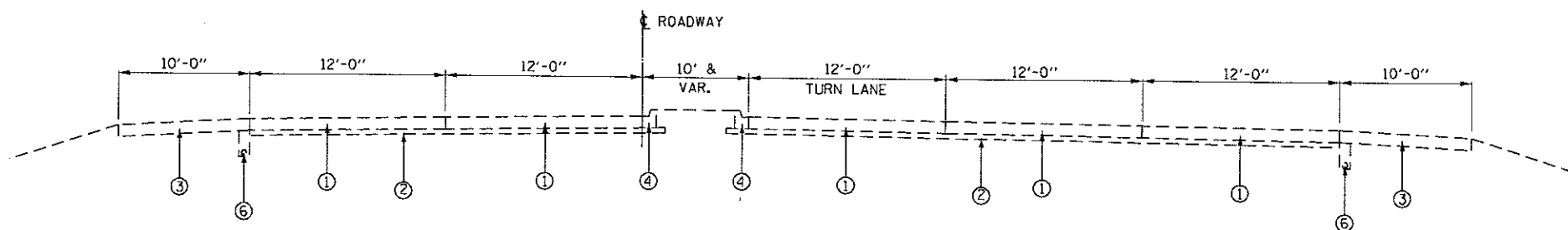


TYPICAL SECTION 2

L.M. 0.00 – L.M. 0.05
 L.M. 0.15 – L.M. 0.23

LEGEND

- 1 PORTLAND CEMENT CONCRETE PAVEMENT 9"
- 2 STABILIZED SUB-BASE 4"
- 3 STABILIZED SHOULDER 9" (HMA)
- 4 COMBINATION CONCRETE CURB AND GUTTER, TYPE B-9.24
- 5 PORTLAND CEMENT CONCRETE MEDIAN SURFACE 4"
- 6 PIPE UNDERDRAINS 4"



TYPICAL SECTION 3

L.M. 0.38 – L.M. 0.45

NOTE: FOR TYPICAL SECTIONS L.M. SHALL INCREASE FROM SOUTH TO NORTH

FILE NAME =	USER NAME = woodshenkrl	DESIGNED - RW	REVISED -
pw\1\084EBIDINTEG.illinois.gov\pw\DOT\Documents\DOT Offices\District 3\Projects\036H\Drawings\036H\RD\details.dgn	DRAWN	CHECKED - EP	REVISED -
Default	PLOT SCALE = 100.0000 1/ in.	DATE - 3/6/2017	REVISED -

STATE OF ILLINOIS
 DEPARTMENT OF TRANSPORTATION

TYPICAL SECTIONS

SCALE: SHEET 1 OF 1 SHEETS STA. TO STA.

F.A.P. RTE.	SECTION	COUNTY	TOTAL SHEETS	SHEET NO.
326	(119)PP	GRUNDY	24	6
CONTRACT NO. 66H32			ILLINOIS FED. AID PROJECT	

PATCHING SCHEDULE FOR NORTHBOUND LANES

LOCATION LOG MILE	LEFT TURN LANE				PASSING LANE				DRIVING LANE								
	PATCH LENGTH	CLASS B TYPE II 9"	DOWEL BARS 1 1/2"	SAW CUTS	PATCH LENGTH	CLASS B TYPE II 9"	DOWEL BARS 1 1/2"	SAW CUTS	PATCH LENGTH	TYPE II 9"	CLASS B TYPE III 9"	TYPE IV 9"	DOWEL BARS 1 1/2"	DOWEL BAR ASSEMBLY	SAW CUTS	WELDED WIRE REINF.	TIE BARS 3/4"
	(FT)	SQ YD	EACH	FOOT	(FT)	SQ YD	EACH	FOOT	(FT)	SQ YD	SQ YD	SQ YD	EACH	EACH	FOOT	SQ YD	EACH
0.05					6	8	20	48									
0.07																	
0.10																	
0.12																	
0.13									6	8			20		48		
0.15									6	8			20		48		
0.17					6	8	20	48									
0.18									8	11			20		52		
0.18					8	11	20	52									
0.20									6	8			20		48		
0.20					6	8	20	48									
0.21									6	8			20		48		
0.21					6	8	20	48									
0.22									6	8			20		48		
0.22					6	8	20	48									
0.23									6	8			20		48		
0.23									12		16		20		60	16	
0.24									16		21		20		68	21	
0.25									60			80	20	4	156	80	30
0.40	6	8	20	48													
0.41									16		21		20		68	21	
0.42									6	8			20		48		
0.42	6	8	20	48													
0.43									6	8			20		48		
0.46									6	8			20		48		
0.46					6	8	20	48									
0.46	6	8	20	48													
0.50									10	13			20		56		
0.51									6	8			20		48		
0.51					6	8	20	48									
0.52									6	8			20		48		
0.53									6	8			20		48		
SUBTOTALS	18	24	60	144	56	75	180	436	194	120	58	80	360	4	1036	138	30

PATCHING TOTALS FOR SOUTHBOUND LANES

TYPE II 9"	CLASS B TYPE III 9"	TYPE IV 9"	DOWEL BARS 1 1/2"	DOWEL BAR ASSEMBLY	SAW CUTS	WELDED WIRE REINF.	TIE BARS 3/4"
SQ YD	SQ YD	SQ YD	EACH	EACH	FOOT	SQ YD	EACH
219	58	80	600	4	1616	138	30

PATCHING SCHEDULE FOR SOUTHBOUND LANES

LOCATION LOG MILE	LEFT TURN LANE				PASSING LANE								DRIVING LANE										
	PATCH LENGTH (FT)	CLASS B TYPE II 9" SQ YD	DOWEL BARS 1 1/2" EACH	SAW CUTS FOOT	PATCH LENGTH (FT)	TYPE II 9" SQ YD	CLASS B TYPE III 9" SQ YD	TYPE IV 9" SQ YD	DOWEL BARS 1 1/2" EACH	DOWEL BAR ASSEMBLY EACH	SAW CUTS FOOT	WELDED WIRE REINF. SQ YD	TIE BARS 3/4" EACH	PATCH LENGTH (FT)	TYPE II 9" SQ YD	CLASS B TYPE III 9" SQ YD	TYPE IV 9" SQ YD	DOWEL BARS 1 1/2" EACH	DOWEL BAR ASSEMBLY EACH	SAW CUTS FOOT	WELDED WIRE REINF. SQ YD	TIE BARS 3/4" EACH	
0.00														6	8			20			48		
0.05														6	8			20			48		
0.05					6	8			20		48												
0.07														6	8			20			48		
0.07					6	8			20		48												
0.08														6	8			20			48		
0.09					6	8			20		48												
0.09					6	8			20		48												
0.09														6	8			20			48		
0.09														6	8			20			48		
0.09					6	8			20		48												
0.09					6	8			20		48												
0.09														6	8			20			48		
0.09														6	8			20			48		
0.10														6	8			20			48		
0.10					6	8			20		48												
0.10														6	8			20			48		
0.10					6	8			20		48												
0.11					20			27	20	1	88	27	20	24			32	20	1	96	32	12	
0.11					12				20		60	16											
0.11														12		16					60	16	
0.11					12				20		60	16											
0.12					12				20		60	16											
0.12														6	8			20			48		
0.12														6	8			20			48		
0.13														6	8			20			48		
0.14														6	8			20			48		
0.14					6	8			20		48												
0.14														30			40	20	2	576	40	15	
0.14														6	8			20			48		
0.14					6	8			20		48												
0.15														8	11			20			52		
0.15					8	11			20		52												
0.15					6	8			20		48												
0.16					6	8			20		48												
0.16														6	8			20			48		
0.16														6	8			20			48		
0.16					6	8			20		48												
0.17					6	8			20		48												
0.17														20			27	20	1	76	27	10	
0.17					6	8			20		48												
0.18					6	8			20		48												
0.19																							
0.20														20			27	20	1	76	27	10	
0.20					6	8			20		48												
0.20														6	8			20			48		
0.20														6	8			20			48		
0.20					20			27	20	1	88	27	20	30			40	20	2	96	40	15	
0.28														6	8			20			48		
0.28					6	8			20		48												
0.28														6	8			20			48		
0.28					6	8			20		48												
0.31														6	8			20			48		
0.31														6	8			20			48		
0.31					6	8			20		48												
0.32														6	8			20			48		
0.32					6	8			20		48												
0.33														6	8			20			48		
0.33					6	8			20		48												
SUBTOTALS					210	179	48	54	540	2	1416	102	40	288	203	16	166	620	7	2184	182	62	

PATCHING SCHEDULE FOR SOUTHBOUND LANES

LOCATION	LEFT TURN LANE				PASSING LANE									DRIVING LANE									
	PATCH LENGTH	CLASS B TYPE II 9"	DOWEL BARS 1 1/2"	SAW CUTS	PATCH LENGTH	CLASS B TYPE II 9"	CLASS B TYPE III 9"	CLASS B TYPE IV 9"	DOWEL BARS 1 1/2"	DOWEL BAR ASSEMBLY	SAW CUTS	WELDED WIRE REINF.	TIE BARS 3/4"	PATCH LENGTH	CLASS B TYPE II 9"	CLASS B TYPE III 9"	CLASS B TYPE IV 9"	DOWEL BARS 1 1/2"	DOWEL BAR ASSEMBLY	SAW CUTS	WELDED WIRE REINF.	TIE BARS 3/4"	
LOG MILE	(FT)	SQ YD	EACH	FOOT	(FT)	SQ YD	SQ YD	SQ YD	EACH	EACH	FOOT	SQ YD	EACH	(FT)	SQ YD	SQ YD	SQ YD	EACH	EACH	FOOT	SQ YD	EACH	
0.34																							
0.34					6	8			20		48			6	8			20		48			
0.34					6	8			20		48			6	8			20		48			
0.34					6	8			20		48			6	8			20		48			
0.35					6	8			20		48			6	8			20		48			
0.35	6	8	20	48																			
0.35					6	8			20		48			6	8			20		48			
0.36					6	8			20		48			6	8			20		48			
0.36					6	8			20		48			6	8			20		48			
0.37					6	8			20		48			6	8			20		48			
0.37	6	8	20	48																			
0.40														10	13			20		56			
0.41					6	8			20		48			6	8			20		48			
0.42					6	8			20		48			6	8			20		48			
0.42					6	8			20		48			6	8			20		48			
0.43														10	13			20		56			
0.46														6	8			20		48			
0.50														10	13			20		56			
0.51					6	8			20		48												
0.52					6	8			20		48			10	13			20		56			
0.52					10	13			20		56												
SUBTOTALS	12	16	40	96	52	69			160		392			94	124			260		656			

PATCHING TOTALS FOR SOUTHBOUND LANES

TYPE II 9"	CLASS B			DOWEL BARS 1 1/2"	DOWEL BAR ASSEMBLY	SAW CUTS	WELDED WIRE REINF.	TIE BARS 3/4"
	TYPE III 9"	TYPE IV 9"						
SQ YD	SQ YD	SQ YD		EACH	EACH	FOOT	SQ YD	EACH
591	64	220		1620	9	4744	284	102

SCHEDULE - MEDIAN

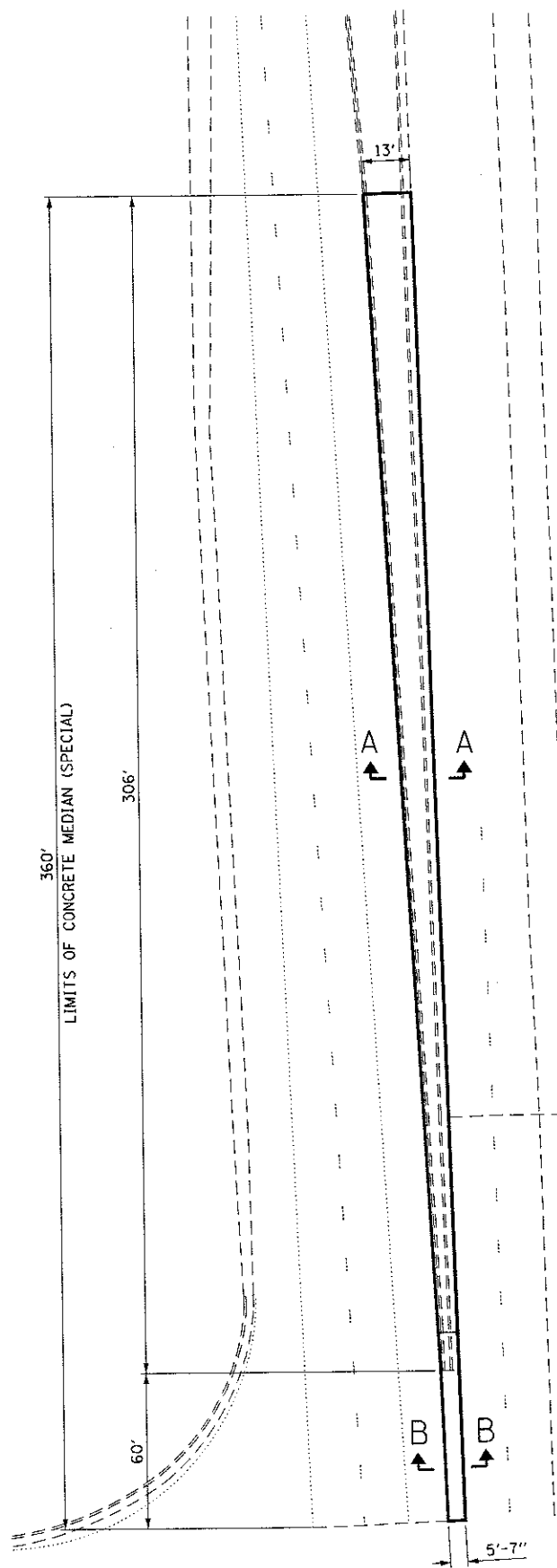
LOCATION	EARTH EXCAVATION	COMBINATION CURB AND GUTTER REMOVAL	CONCRETE MEDIAN SURFACE REMOVAL	AGGREGATE BASE CSE. TYPE B, 4"	3/4" TIE BARS	WELDED WIRE REINF.	CONCRETE MEDIAN (SPECIAL)	CONCRETE MEDIAN SURFACE, SPECIAL
	CU YD	FOOT	SQ FT	SQ YD	EACH	SQ YD	SQ FT	SQ FT
STAGE I	156	556	1230	103	360	312	2803	1689
TOTALS	156	556	1230	103	360	312	2803	1689

PATCHING SCHEDULE FOR NORTHBROOK INTERSECTION

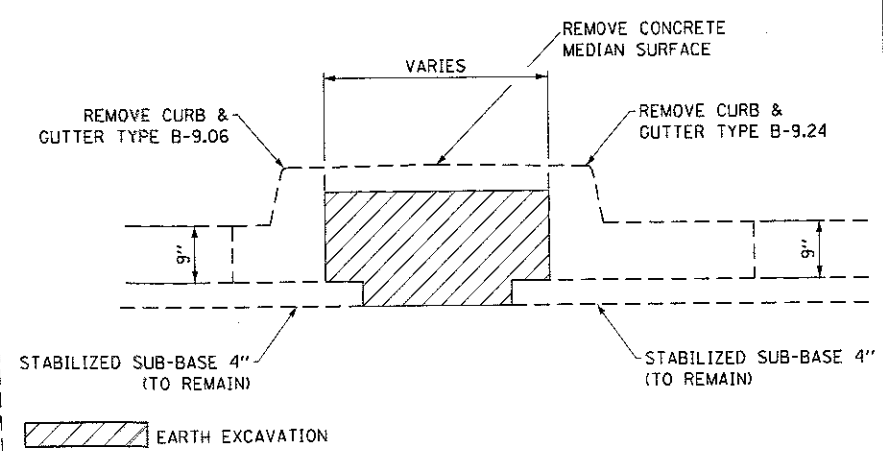
LOCATION	CLASS B TYPE IV 12"	DOWEL BARS 1 1/2"	DOWEL BAR ASSEMBLY	SAW CUTS	WELDED WIRE REINF.	TIE BARS 3/4"
LOG MILE	SQ YD	EACH	EACH	FOOT	SQ YD	EACH
STAGE II	496	29	7	1833	496	194
STAGE III	474	29	6	1850	474	173
STAGE IV	299	20	6	632	299	100
STAGE V	257	19	6	596	257	50
STAGE VI	248	106	3	826	248	76
STAGE VII	206	70	3	768	206	79
SUBTOTALS	1980	273	31	6505	1980	672

SCHEDULE - PAVEMENT MARKING/MARKER

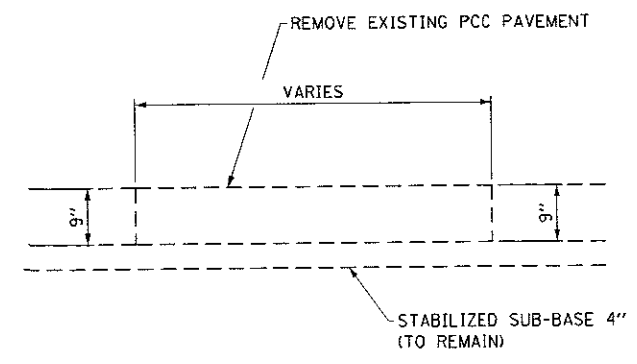
LOCATION	SHORT TERM PAVEMENT MARKING	SHORT TERM PAVEMENT MARKING REMOVAL	POLYUREA PAVEMENT MARKING L&S	POLYUREA PAVEMENT MARKING LINE 4"	POLYUREA PAVEMENT MARKING LINE 6"	POLYUREA PAVEMENT MARKING LINE 8"	POLYUREA PAVEMENT MARKING LINE 12"	POLYUREA PAVEMENT MARKING LINE 24"	RAISED REFLECTIVE PAVEMENT MARKERS			
	FOOT	SQ FT	SQ FT	FOOT		FOOT	FOOT	FOOT	FOOT			
	WHITE		WHITE	YELLOW	WHITE	WHITE	YELLOW	WHITE	WHITE	AMBER	CRYSTAL	
STAGE VIII	94	276	16	1029	254	60	100	39	104	46	10	2
TOTALS	94	276	16	1283		60	100	143	46	12		



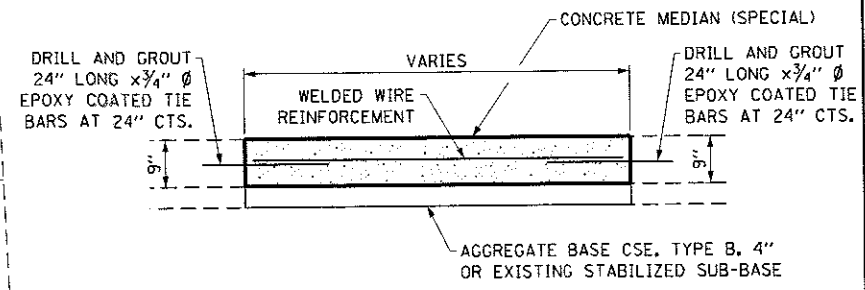
**EXISTING MEDIAN PLAN
STAGE I**



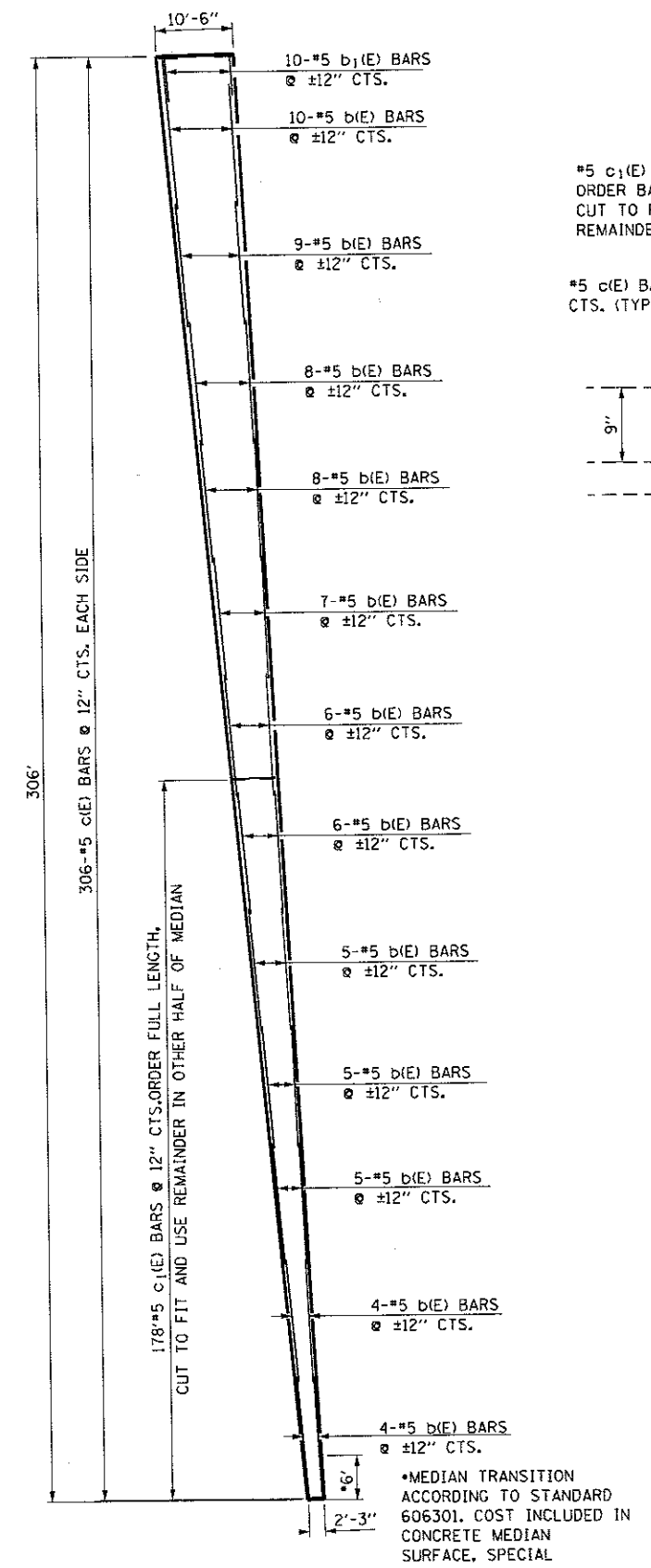
EXISTING SECTION A-A



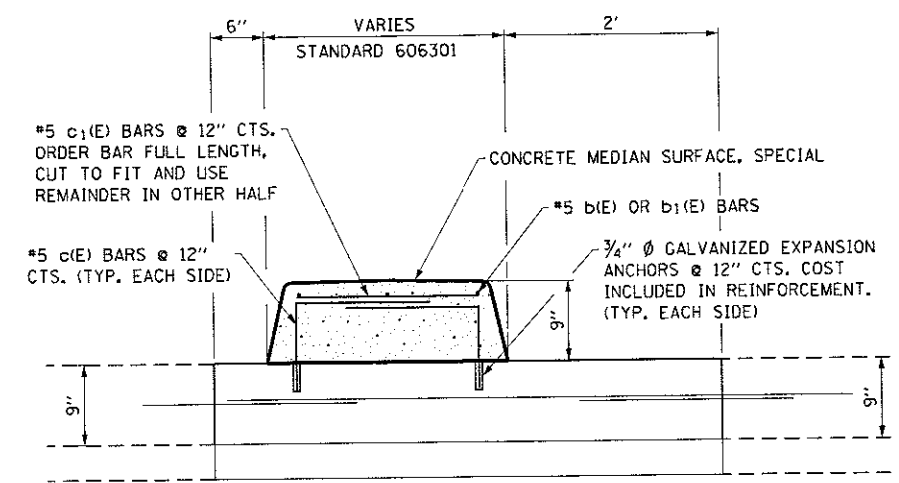
EXISTING SECTION B-B



PROPOSED SECTION A-A & B-B



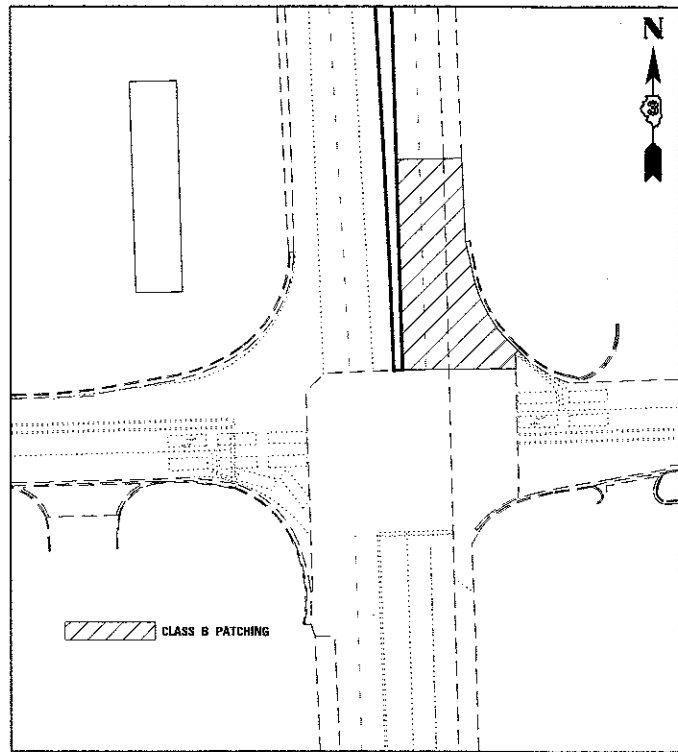
**PROPOSED MEDIAN SURFACE PLAN
STAGE VIII**



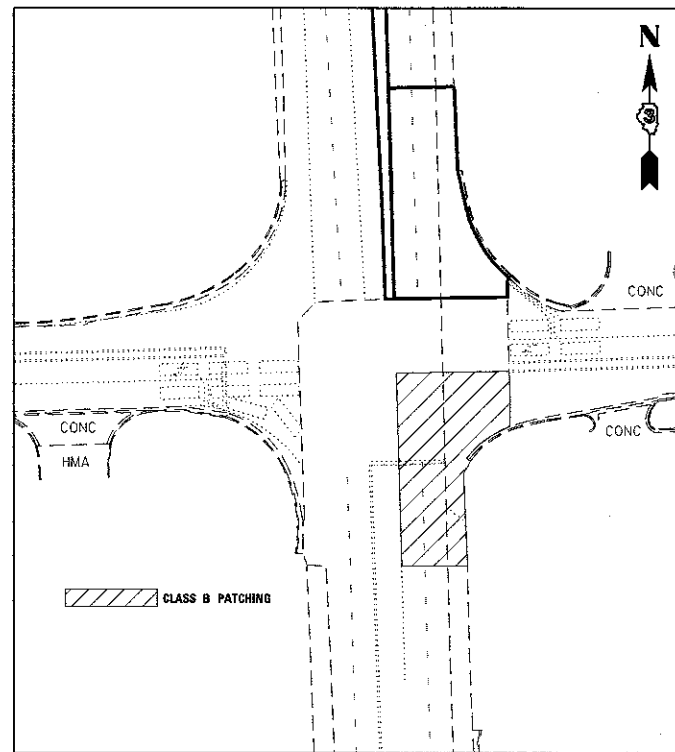
SECTION A-A

**MEDIAN SURFACE
BILL OF MATERIAL**

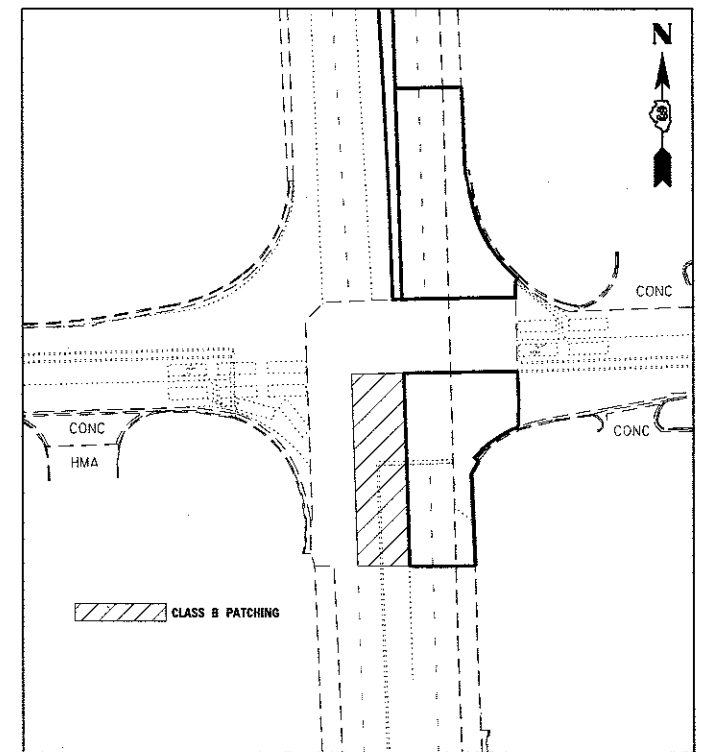
BAR	NO.	SIZE	LENGTH	SHAPE
b(E)	77	#5	30'-0"	—
b1(E)	10	#5	10'-0"	—
c(E)	612	#5	1'-9"	—
c1(E)	178	#5	12'-6"	—
REINFORCEMENT BARS, EPOXY COATED			LBS.	5950



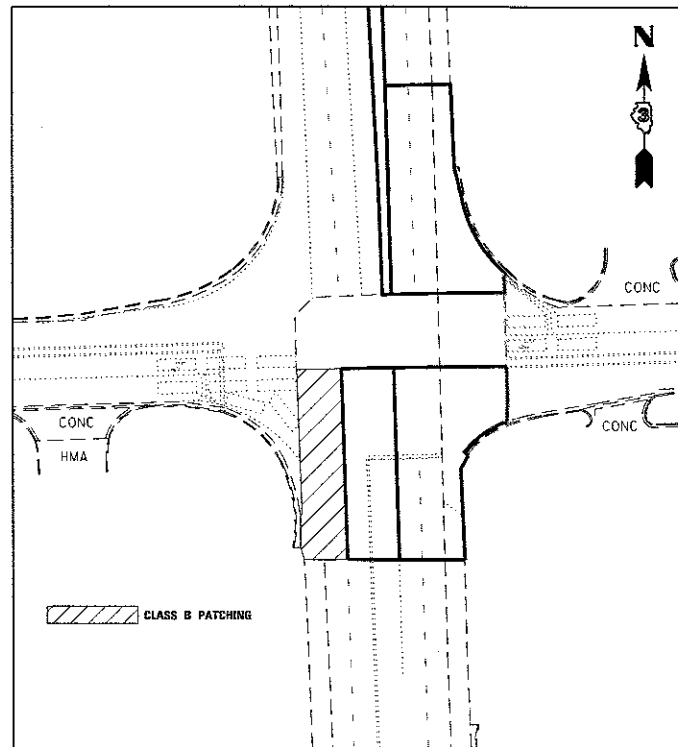
STAGE II



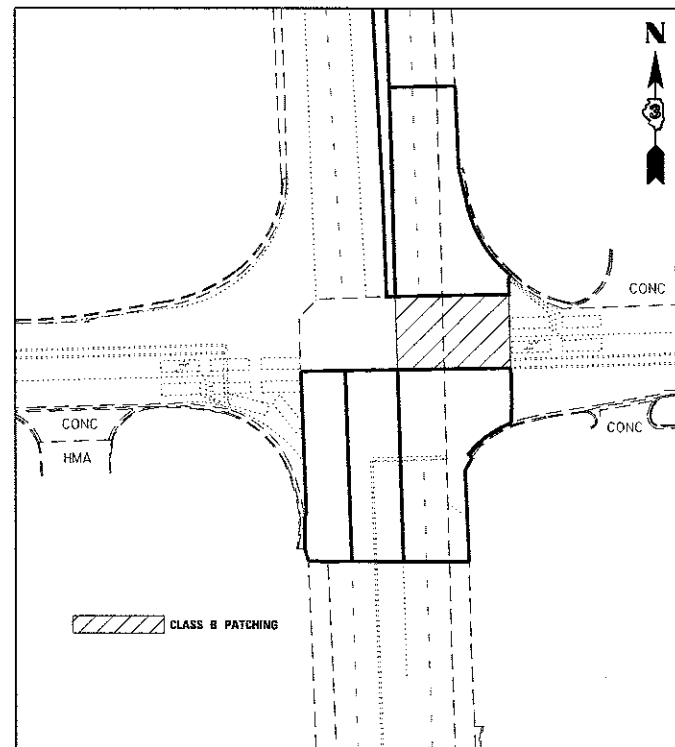
STAGE III



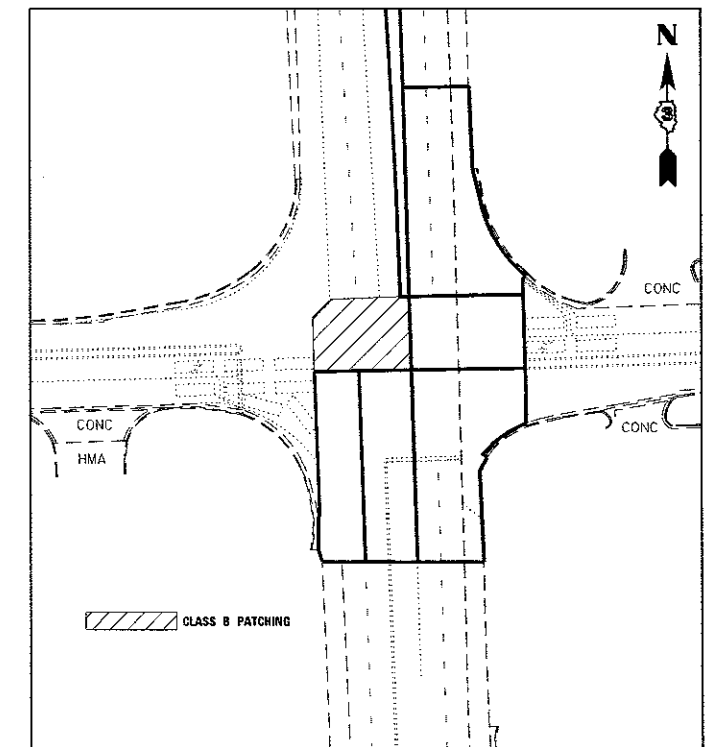
STAGE IV



STAGE V



STAGE VI



STAGE VII

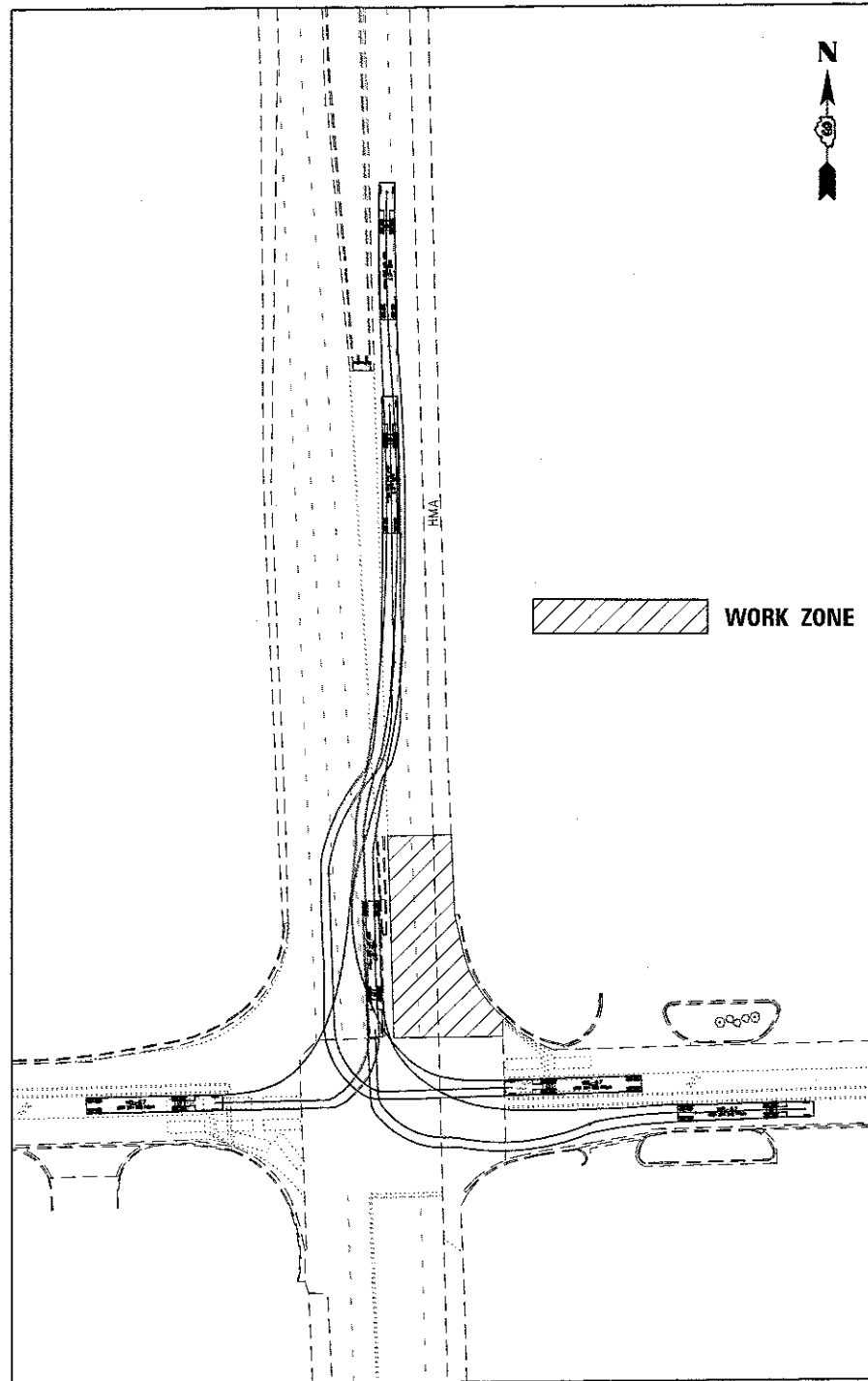
FILE NAME =	USER NAME = woodshankr	DESIGNED - RW	REVISED -
p:\11084EB\0\INTEG\11\inois.gov\FW\DOT\Documents\DOT Offices\District 3\Projects\0364\DRAW\Date\93664\RW\details.dgn		DRAWN - RW	REVISED -
Default		CHECKED - EP	REVISED -
		DATE - 3/6/2017	REVISED -

**STATE OF ILLINOIS
DEPARTMENT OF TRANSPORTATION**

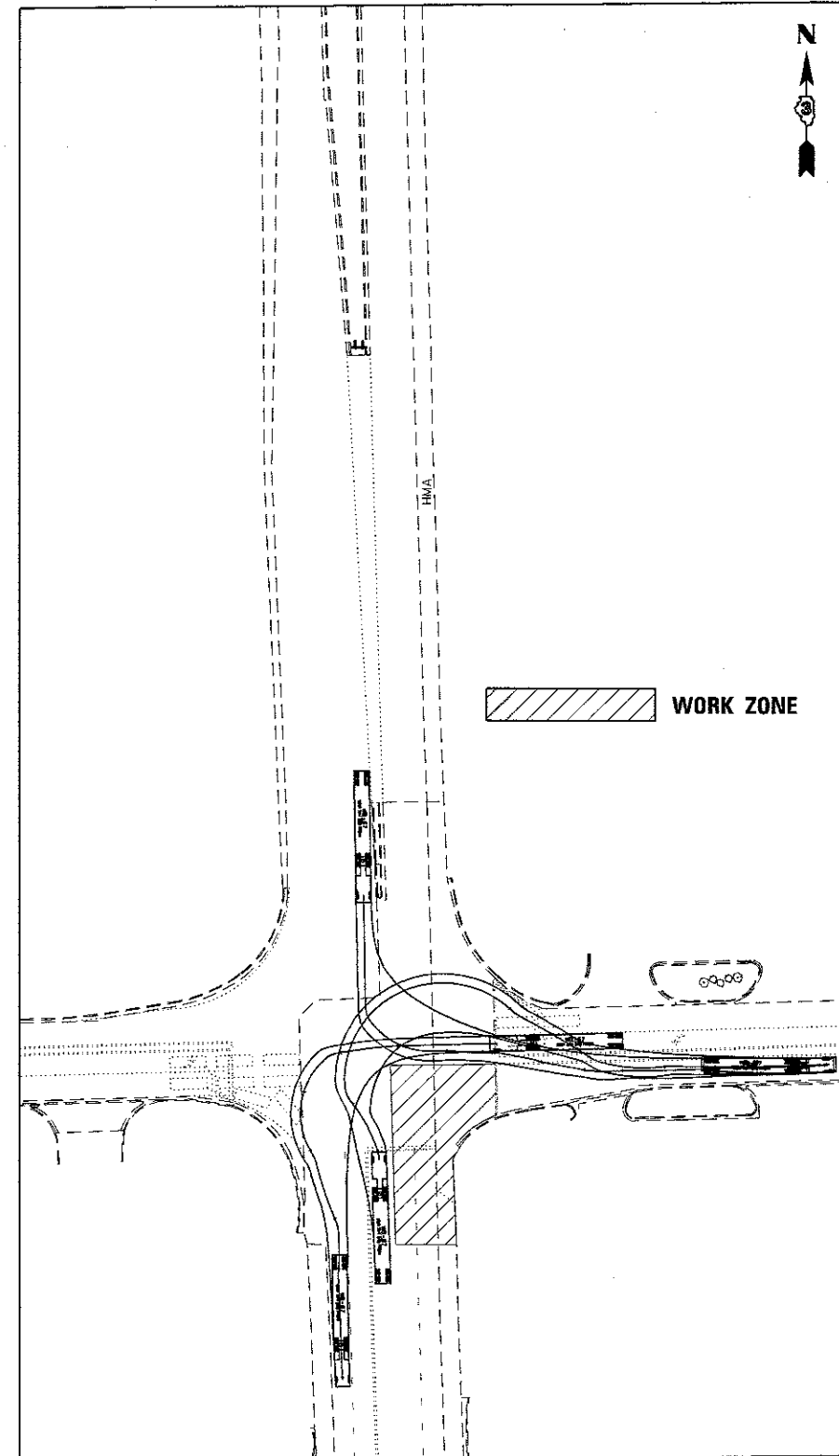
**INTERSECTION STAGING DETAILS
STAGE II TO THRU STAGE VII**

SCALE: SHEET 2 OF 2 SHEETS STA. TO STA.

F.A.P. RTE. 326	SECTION (119)PP	COUNTY GRUNDY	TOTAL SHEETS 24	SHEET NO. 12
				CONTRACT NO. 66H32
ILLINOIS FED. AID PROJECT				



SUGGESTED TURNING MOVEMENTS
STAGE II



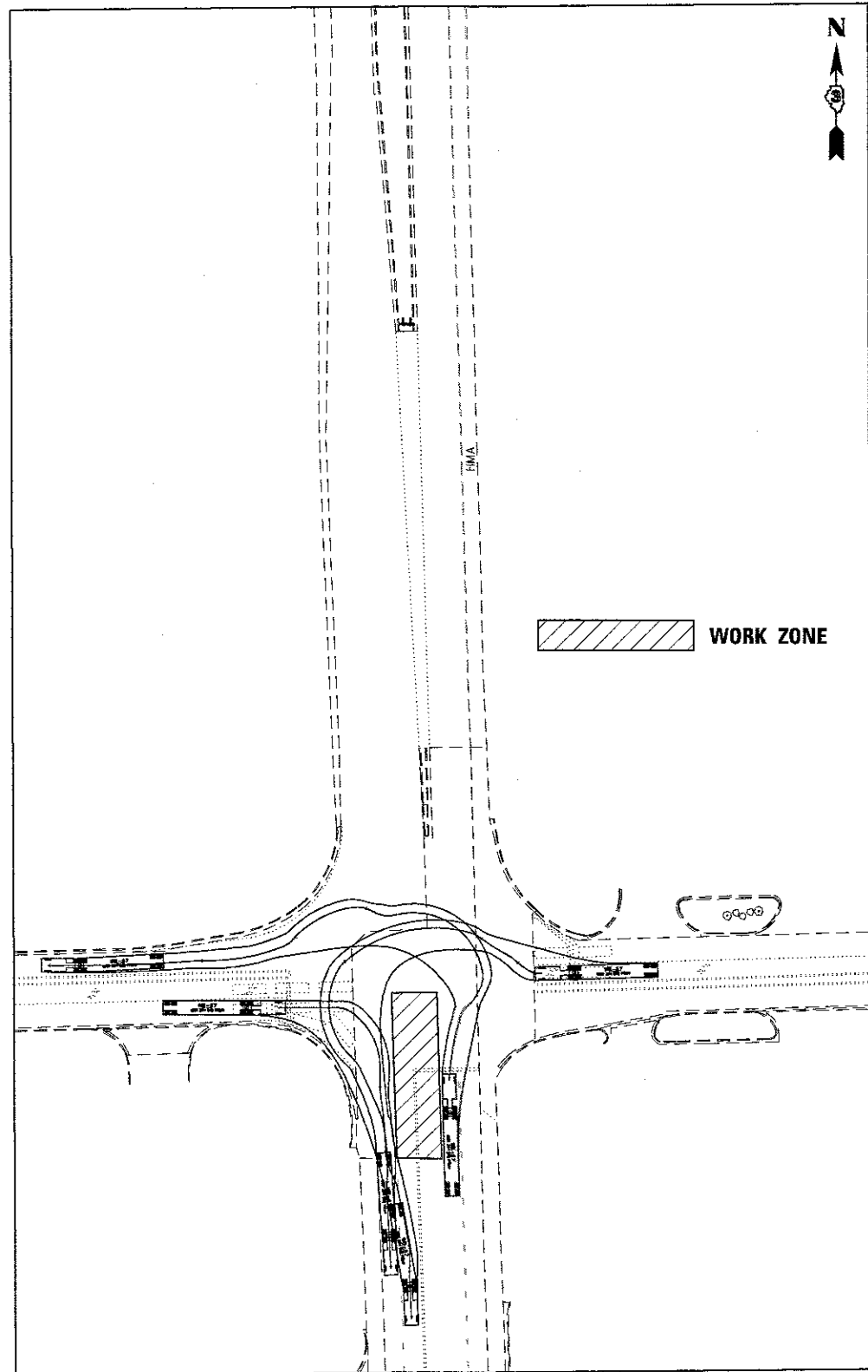
SUGGESTED TURNING MOVEMENTS
STAGE III

FILE NAME =	USER NAME = woodshankr1	DESIGNED - RW	REVISED -
p:\IL\084EB\ID\INTEG.illinois.gov\PI\DOT\Documents\IDOT Offices\District 3\Projects\036	Drawn Date 9/30/17	Drawn Date 9/30/17	REVISED -
Default	PLT SCALE = 100.0000' / in.	CHECKED - EP	REVISED -
	PLT DATE = 5/25/2017	DATE - 3/6/2017	REVISED -

STATE OF ILLINOIS
DEPARTMENT OF TRANSPORTATION

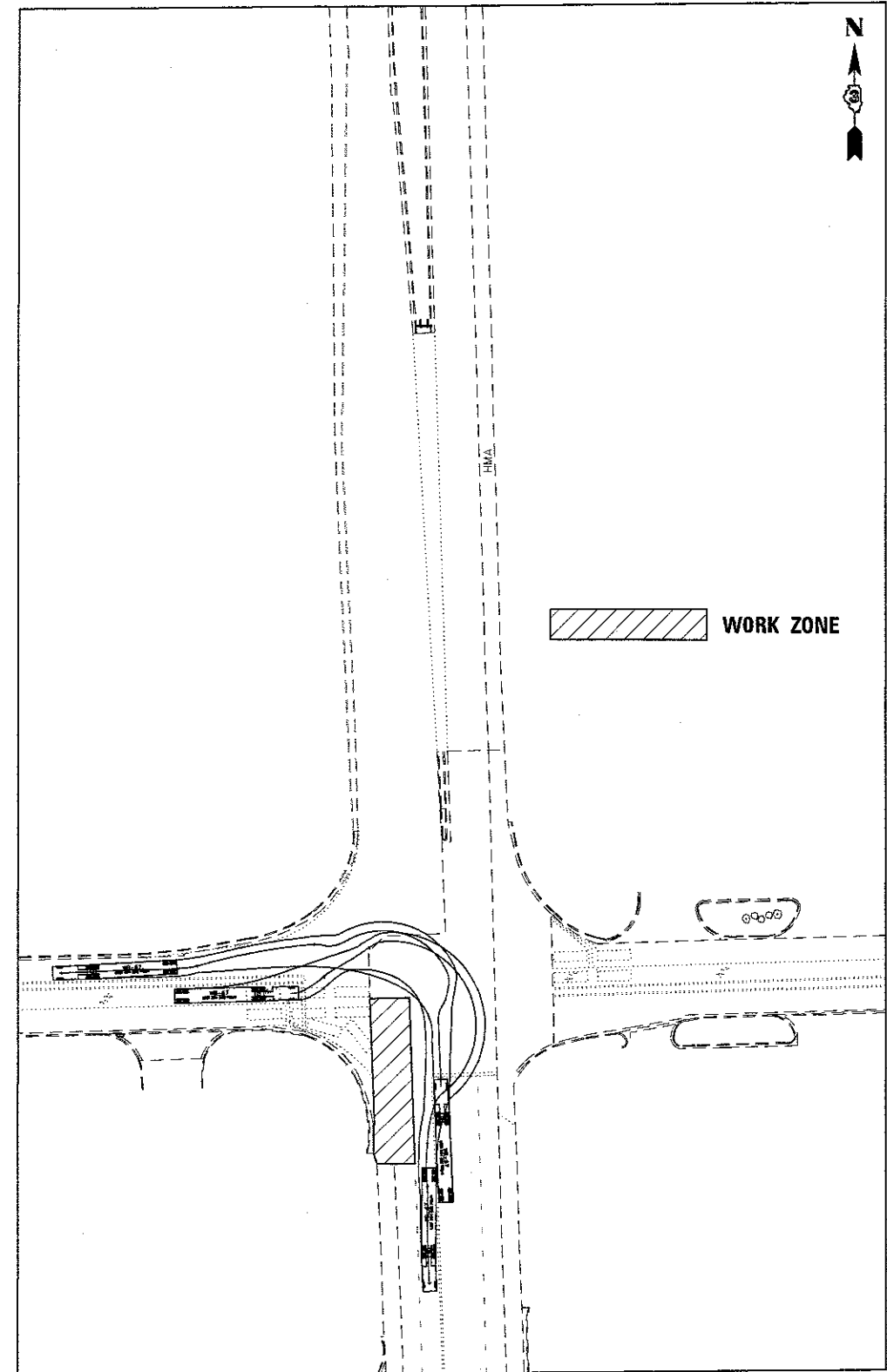
SUGGESTED TURNING MOVEMENTS			
FOR STAGE II & III CONSTRUCTION			
SCALE:	SHEET 1	OF 4 SHEETS	STA. TO STA.

F.A.P. RTE.	SECTION	COUNTY	TOTAL SHEETS	SHEET NO.
326	(1)19PP	GRUNDY	24	13
				CONTRACT NO. 66H32
ILLINOIS FED. AID PROJECT				



SUGGESTED TURNING MOVEMENTS

STAGE IV



SUGGESTED TURNING MOVEMENTS

STAGE V

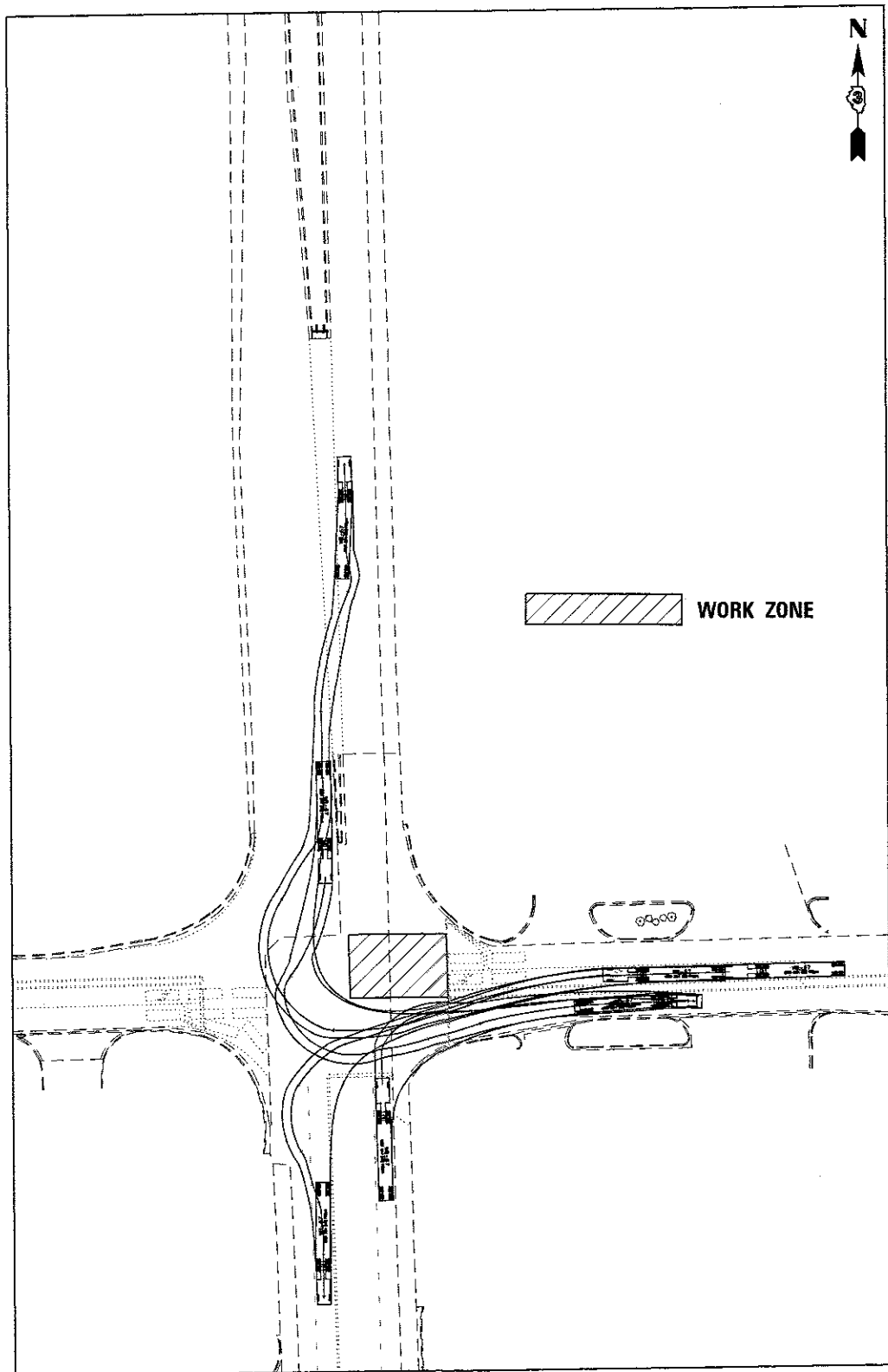
FILE NAME =	USER NAME = woodshankr1	DESIGNED - RW	REVISED -
p:\1\084EBIDINTEG\Illinois.gov\PI\DOT\Documents\DOT Offices\District 3\Projects\036-DRAWN\Date\B366HR\details.dgn		CHECKED - EP	REVISED -
Default	PLOT SCALE = 100.0000' / 1"	DATE - 3/6/2017	REVISED -

**STATE OF ILLINOIS
DEPARTMENT OF TRANSPORTATION**

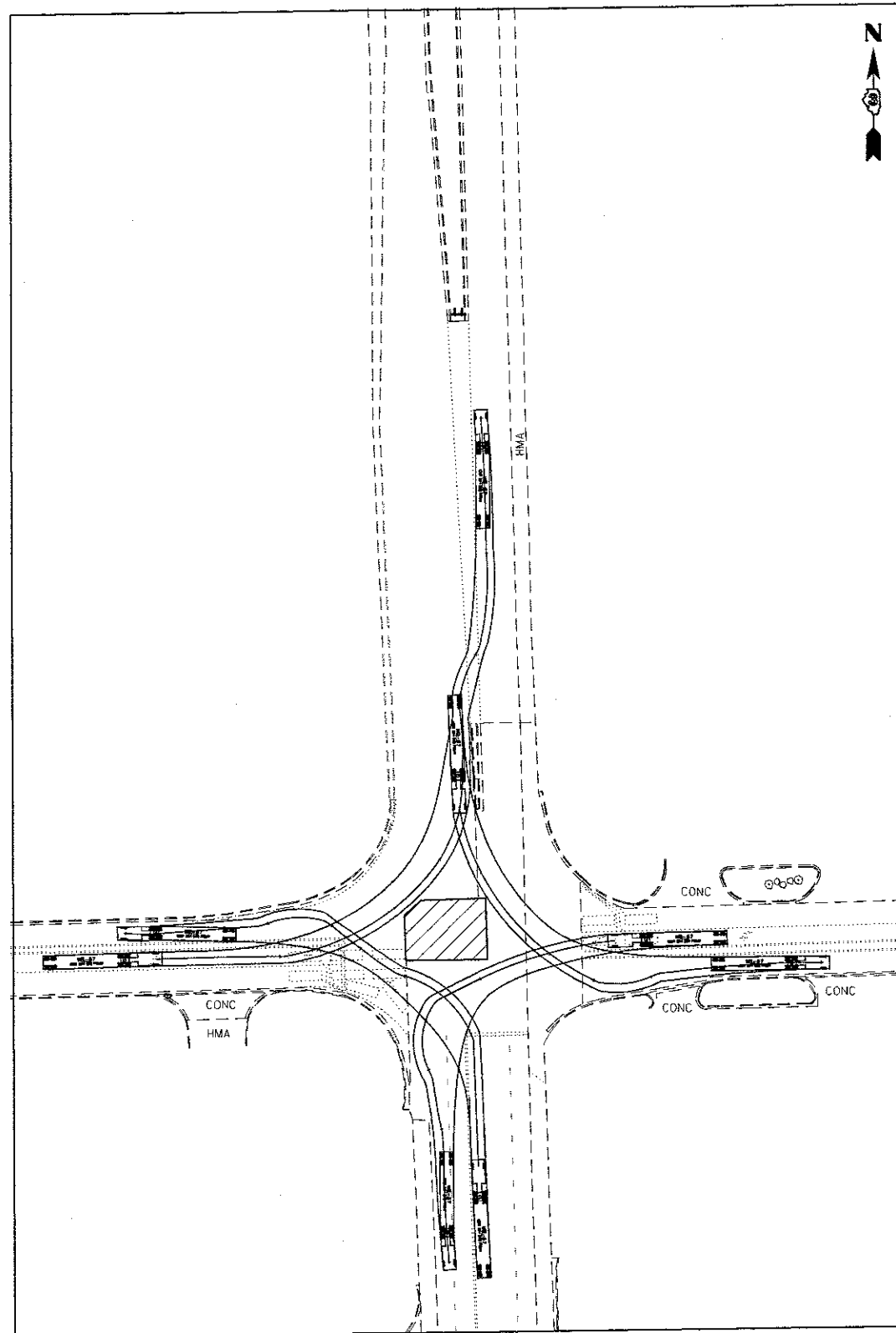
**SUGGESTED TURNING MOVEMENTS
FOR STAGE IV & V CONSTRUCTION**

SCALE: SHEET 2 OF 4 SHEETS STA. TO STA.

F.A.P. RTE. 326	SECTION (119)PP	COUNTY GRUNDY	TOTAL SHEETS 24	SHEET NO. 14
				CONTRACT NO. 66H32
ILLINOIS FED. AID PROJECT				



**SUGGESTED TURNING MOVEMENTS
STAGE VI**



**SUGGESTED TURNING MOVEMENTS
STAGE VII**

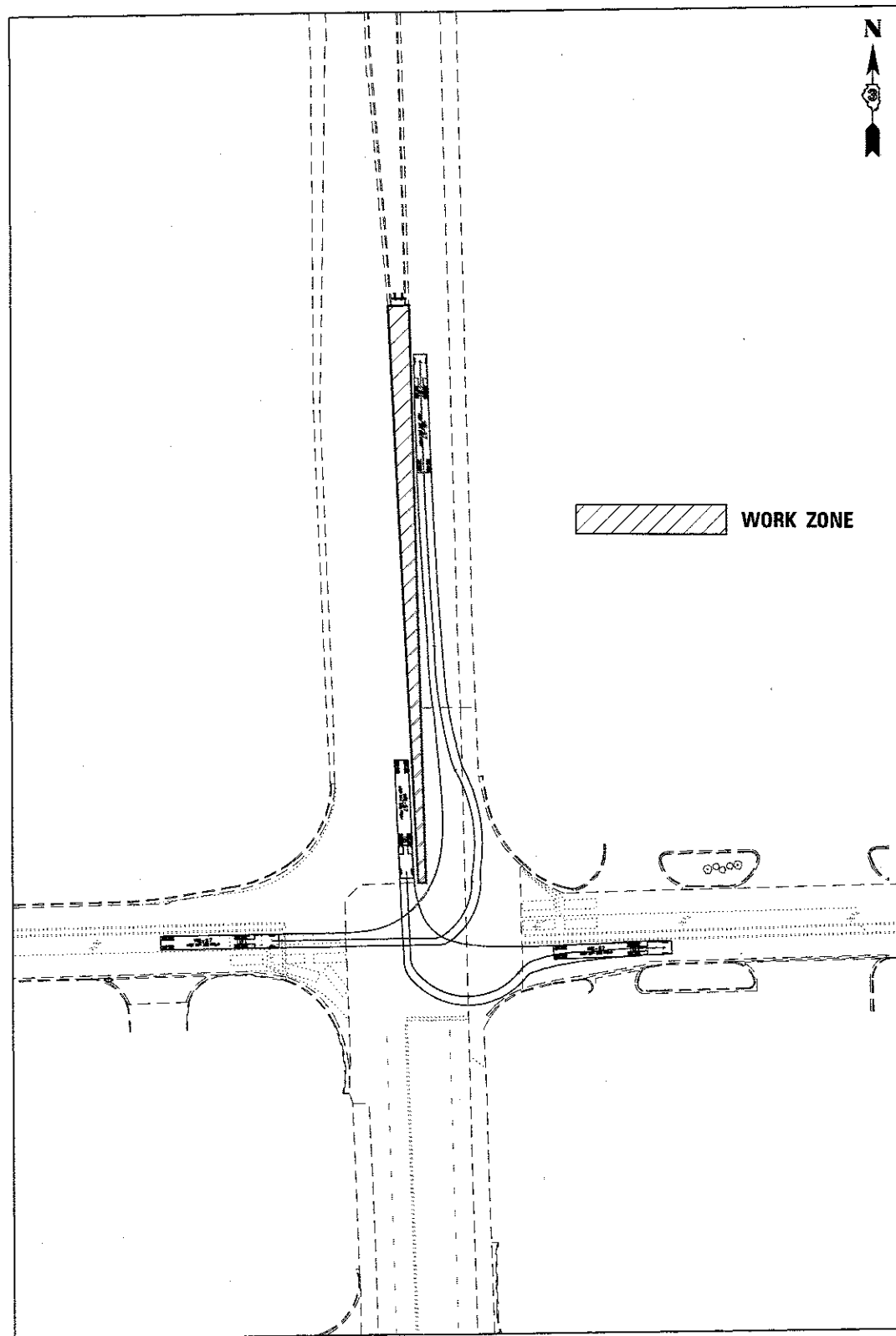
FILE NAME =	USER NAME = woodshankr1	DESIGNED - RW	REVISED -
path\IL084EBID\INTEG\Illinois.gov\PKIDOT\Documents\IDOT Offices\District 3\Projects\0366\Drawings\0366\RW\0366.dgn		DRAWN Data\9366\RW\0366.dgn	REVISED -
Default	PLOT SCALE = 100.0000' / in.	CHECKED - EP	REVISED -
	PLOT DATE = 5/25/2017	DATE - 3/6/2017	REVISED -

**STATE OF ILLINOIS
DEPARTMENT OF TRANSPORTATION**

**SUGGESTED TURNING MOVEMENTS
FOR STAGE VI & VII CONSTRUCTION**

SCALE: SHEET 3 OF 4 SHEETS STA. TO STA.

F.A.P. RTE. 326	SECTION (119)PP	COUNTY GRUNDY	TOTAL SHEETS 24	SHEET NO. 15
CONTRACT NO. 66H32				ILLINOIS FED. AID PROJECT



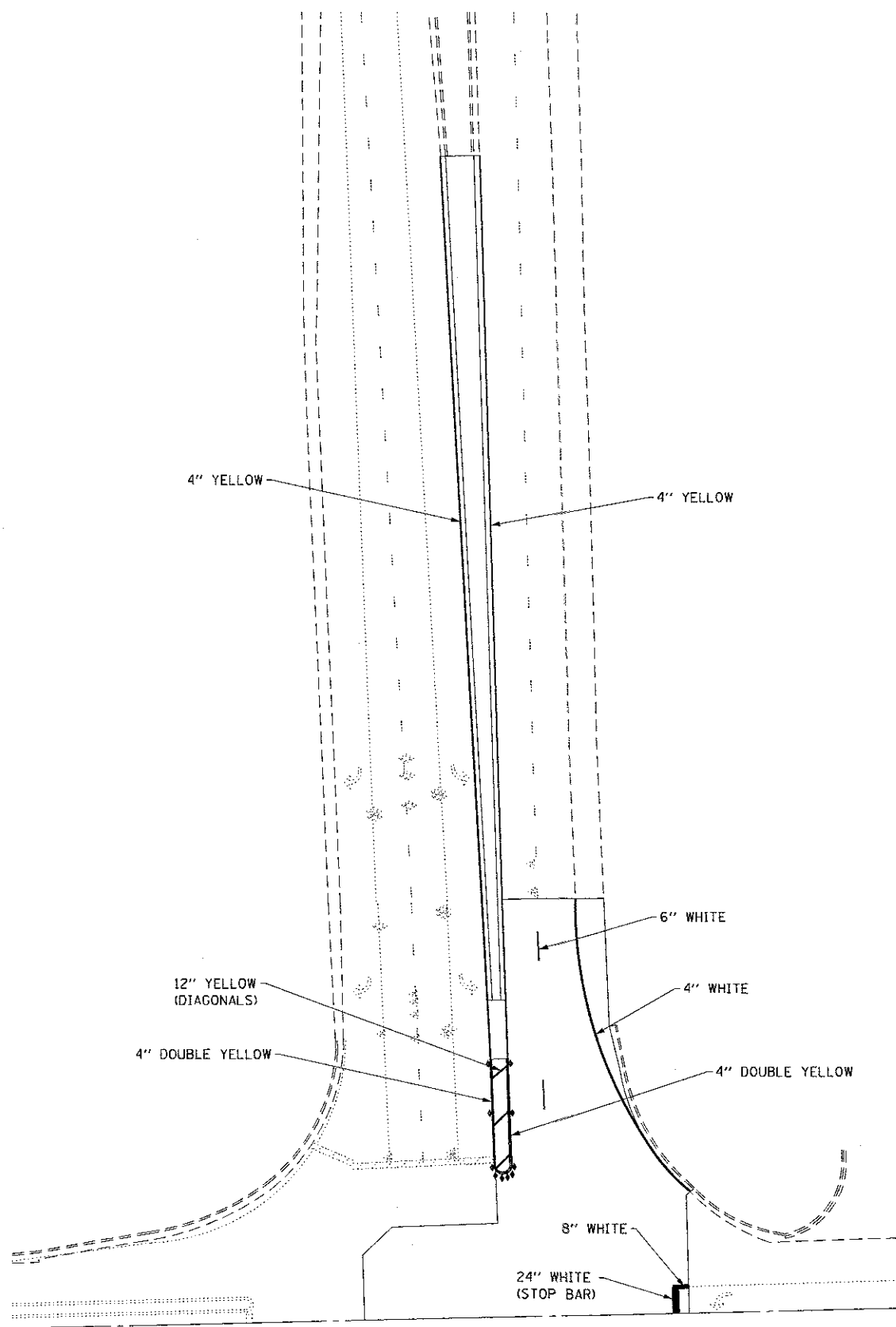
**SUGGESTED TURNING MOVEMENTS
STAGE VIII**

FILE NAME =	USER NAME = woodshankr	DESIGNED - RW	REVISED -
pcw\ll88468\INTEG\Illinois.gov\PI\DOT\Documents\1001 Offices\District 3\Projects\0364	DRAWN Data\B366H	DATA\B366H	REVISED -
Default	PLOT SCALE = 100.0000' / in.	CHECKED - EP	REVISED -
	PLOT DATE = 5/25/2017	DATE - 3/6/2017	REVISED -

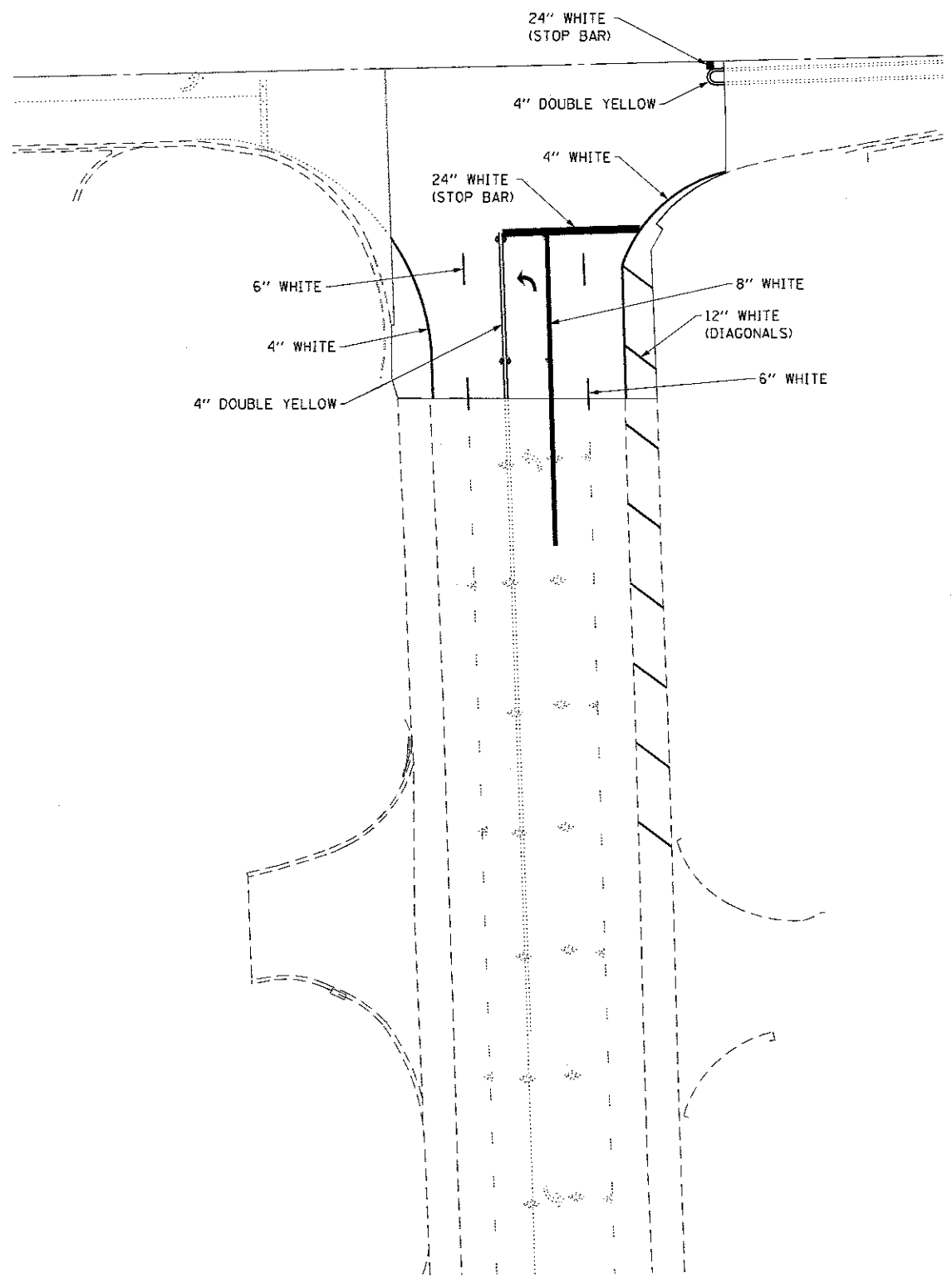
**STATE OF ILLINOIS
DEPARTMENT OF TRANSPORTATION**

SUGGESTED TURNING MOVEMENTS FOR STAGE VIII CONSTRUCTION			
SCALE:	SHEET 4	OF 4 SHEETS	STA. TO STA.

F.A.P. RTE.	SECTION	COUNTY	TOTAL SHEETS	SHEET NO.
326	(119)PP	GRUNDY	24	16
			CONTRACT NO. 66H32	
ILLINOIS FED. AID PROJECT				



NORTH SIDE OF INTERSECTION



SOUTH SIDE OF INTERSECTION

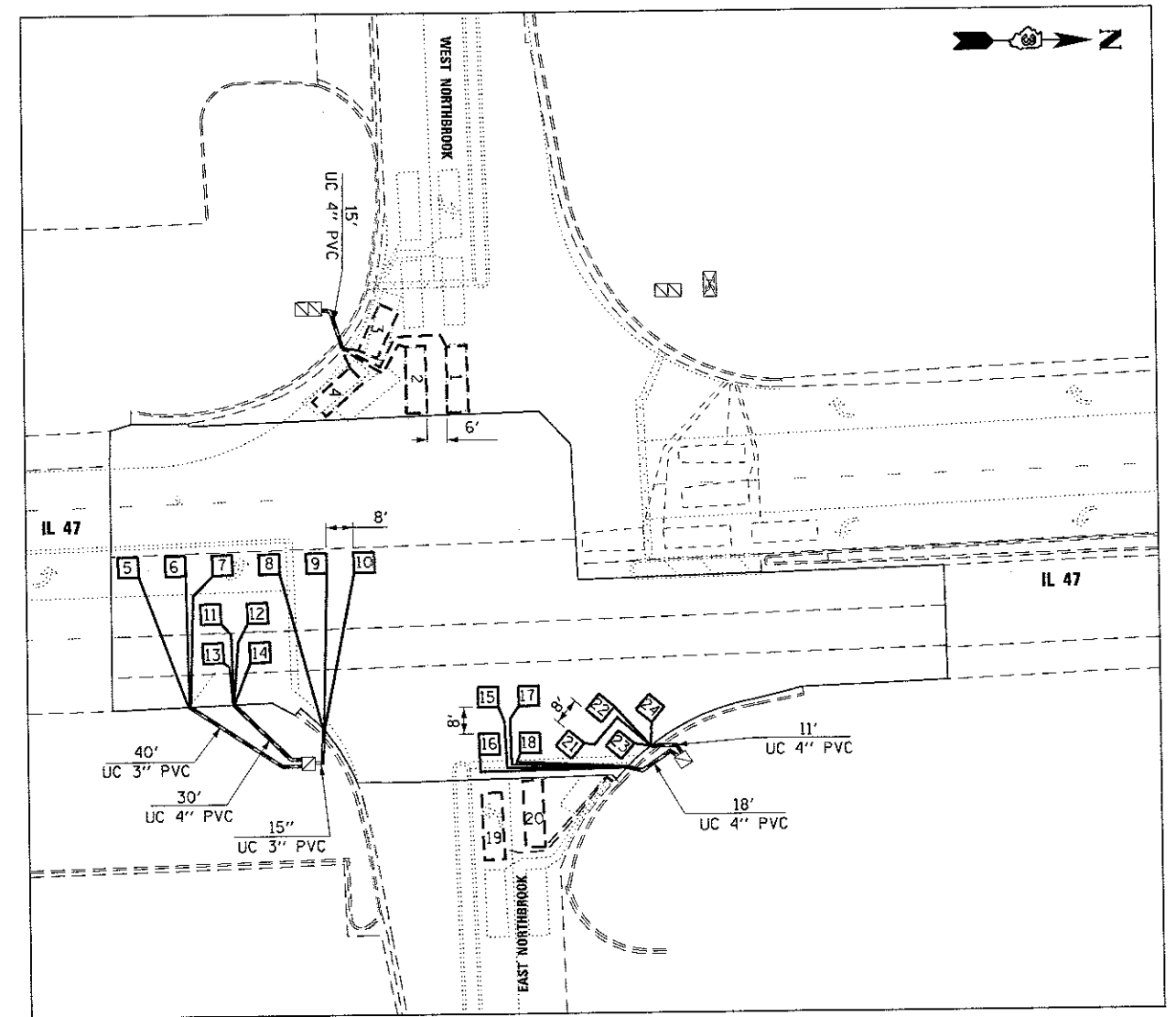
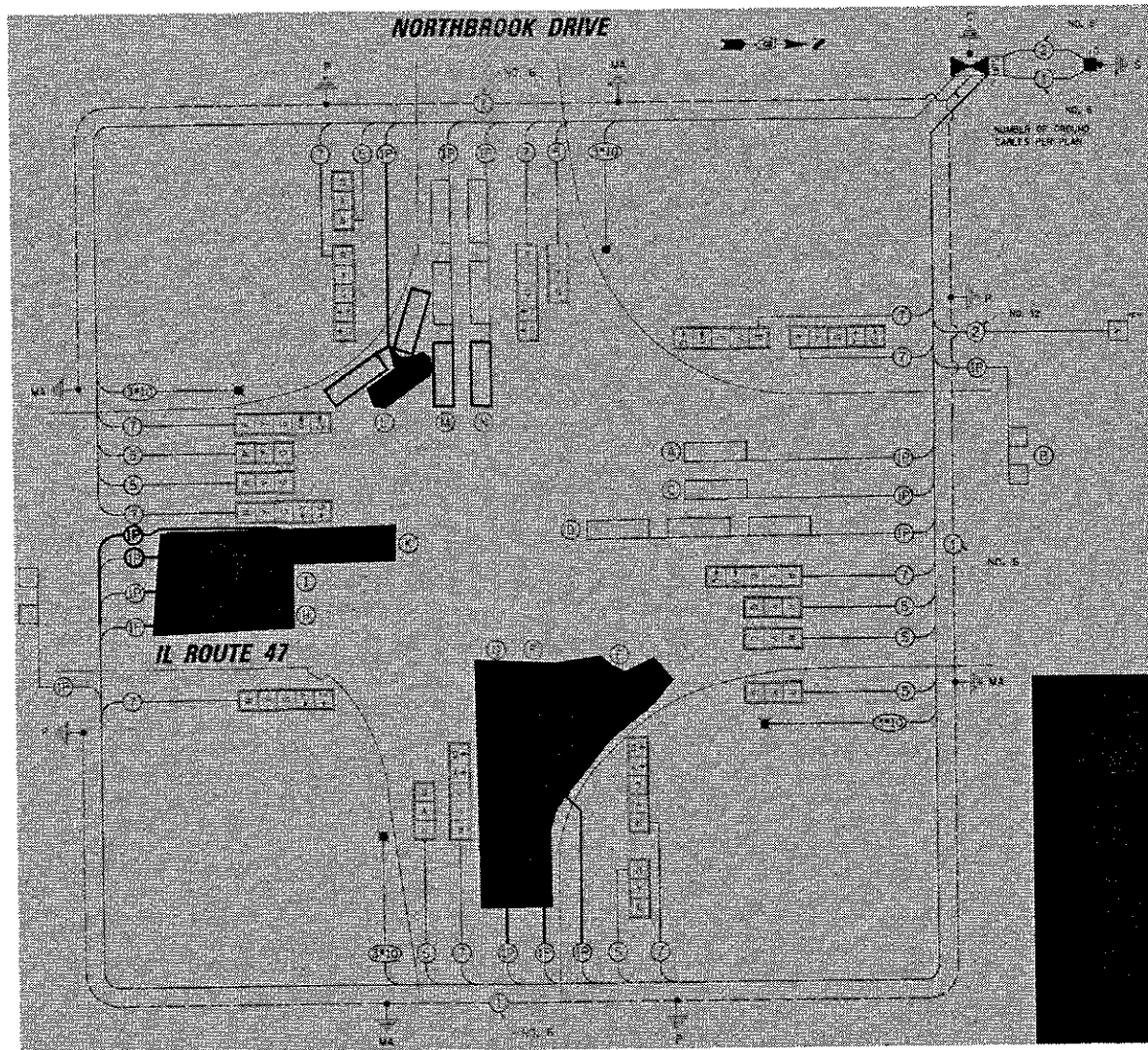
FILE NAME =	USER NAME = woodshankr1	DESIGNED - RW	REVISED -
pn\11084E81DINTEG\Illinois.gov\PIWIDOT\Documents\IDOT Offices\District 3\Projects\0366\Drawings\0366\RW\details.dgn		DRAWN - RW	REVISED -
Default	PLOT SCALE = 100.0000' / in.	CHECKED - EP	REVISED -
	PLOT DATE = 5/25/2017	DATE - 3/6/2017	REVISED -

**STATE OF ILLINOIS
DEPARTMENT OF TRANSPORTATION**

PAVEMENT MARKING DETAILS

SCALE:	SHEET 1 OF 1 SHEETS	STA. TO STA.
--------	---------------------	--------------

F.A.P. RTE. 326	SECTION (119)PP	COUNTY GRUNDY	TOTAL SHEETS 24	SHEET NO. 17
CONTRACT NO. 66H32				ILLINOIS FED. AID PROJECT



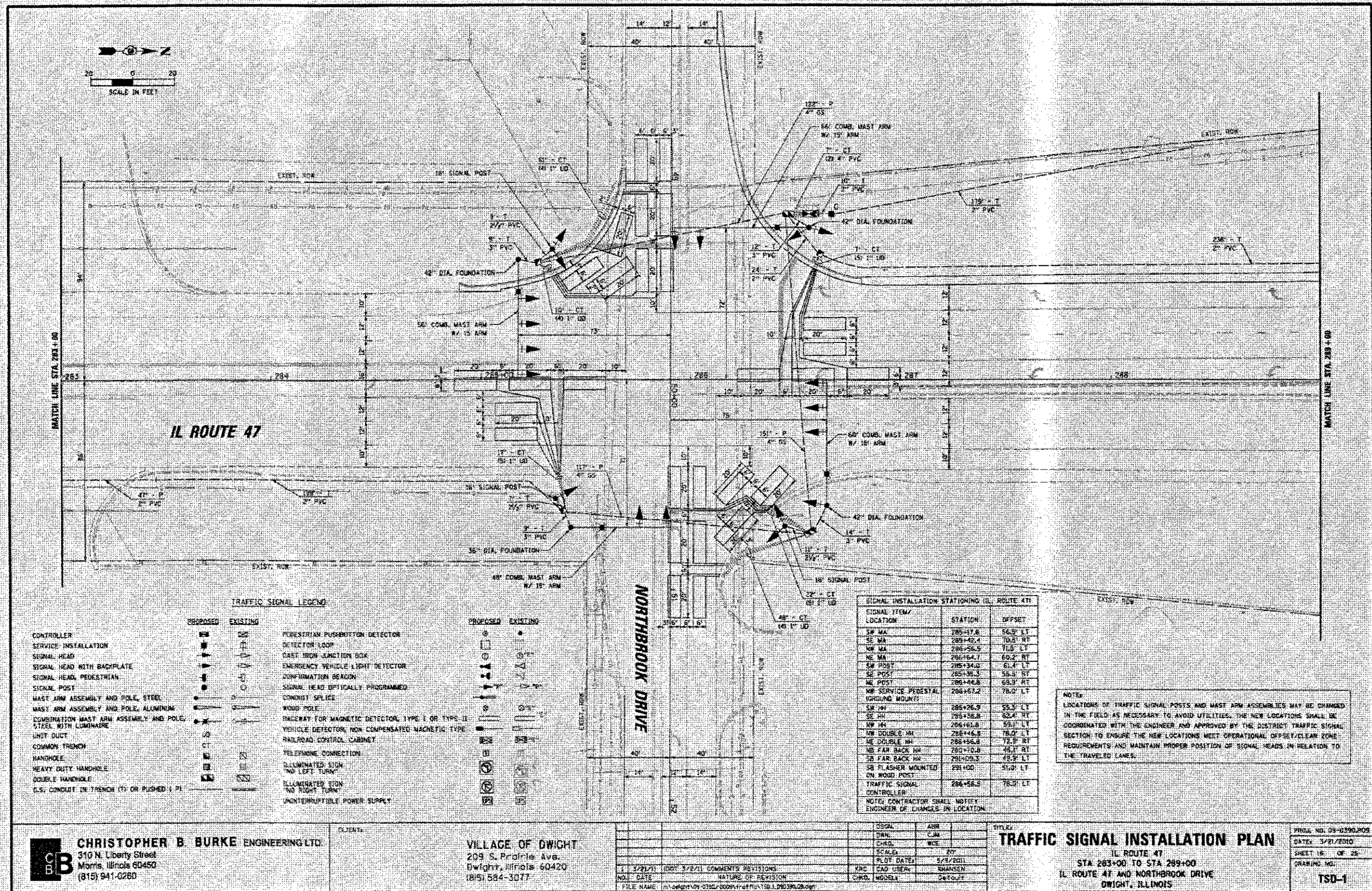
SCHEDULE - DETECTOR LOOPS, NORTHBROOK RD.

LOCATION	DETECTOR I.D. NUMBER	TURNS	LOOP DIMENSIONS		LOOP TO E.O.P. FOOT	LEAD-IN WIRE TO HANDHOLE FOOT	SLACK FOOT	DRILL EXISTING HANDHOLE EACH	HOLES DRILLED EACH	PREFORMED DETECTOR LOOP FOOT	DETECTOR LOOP TYPE I FOOT
			FOOT	FOOT							
EASTBOUND THROUGH	1	4	6' X 20'	110	40	6.5				162	
	2	4	6' X 20'	72	40	6.5	1	1		124	
EASTBOUND LEFT TURN	3	4	6' X 15'	15	40	6.5				57	
	4	4	6' X 15'	16	40	6.5				58	
NORTHBOUND LEFT TURN	5	6	6' X 6'	112	106	6.5				136	
	6	6	6' X 6'	106	106	6.5	1			130	
	7	6	6' X 6'	120	106	6.5				144	
	8	6	6' X 6'	131	33	6.5				155	
	9	6	6' X 6'	128	33	6.5	1	1		152	
	10	6	6' X 6'	130	33	6.5				154	
NORTHBOUND THROUGH	11	6	6' X 6'	70	73	6.5				94	
	12	6	6' X 6'	69	73	6.5	1	1		93	
	13	6	6' X 6'	37	73	6.5				61	
	14	6	6' X 6'	37	73	6.5				61	
WESTBOUND THROUGH	15	6	6' X 6'	144	48	6.5				168	
	16	6	6' X 6'	141	48	6.5	1	1		165	
	17	6	6' X 6'	98	48	6.5				122	
	18	6	6' X 6'	134	48	6.5				158	
	19	4	6' X 20'	118	60	6.5					170
	20	4	6' X 20'	84	58	6.5					136
WESTBOUND RIGHT TURN	21	6	6' X 6'	70	30	6.5				94	
	22	6	6' X 6'	62	30	6.5	1	1		86	
	23	6	6' X 6'	14	30	6.5				38	
	24	6	6' X 6'	16	30	6.5				40	
TOTALS							6	5	2051	707	

IL 47 AND NORTHBROOK INTERSECTION

DETECTOR LOOPS

- LEGEND**
- EXISTING CONTROLLER
 - EXISTING DOUBLE HANDHOLE
 - EXISTING HANDHOLE
 - EXISTING 6' X 20' DETECTOR LOOP
 - 6' X 20' DETECTOR LOOP, TYPE I
 - 6' X 6' PREFORMED DETECTOR LOOP



CHRISTOPHER B BURKE ENGINEERING LTD.
 310 N. Liberty Street
 Morris, Illinois 60450
 (815) 941-0280

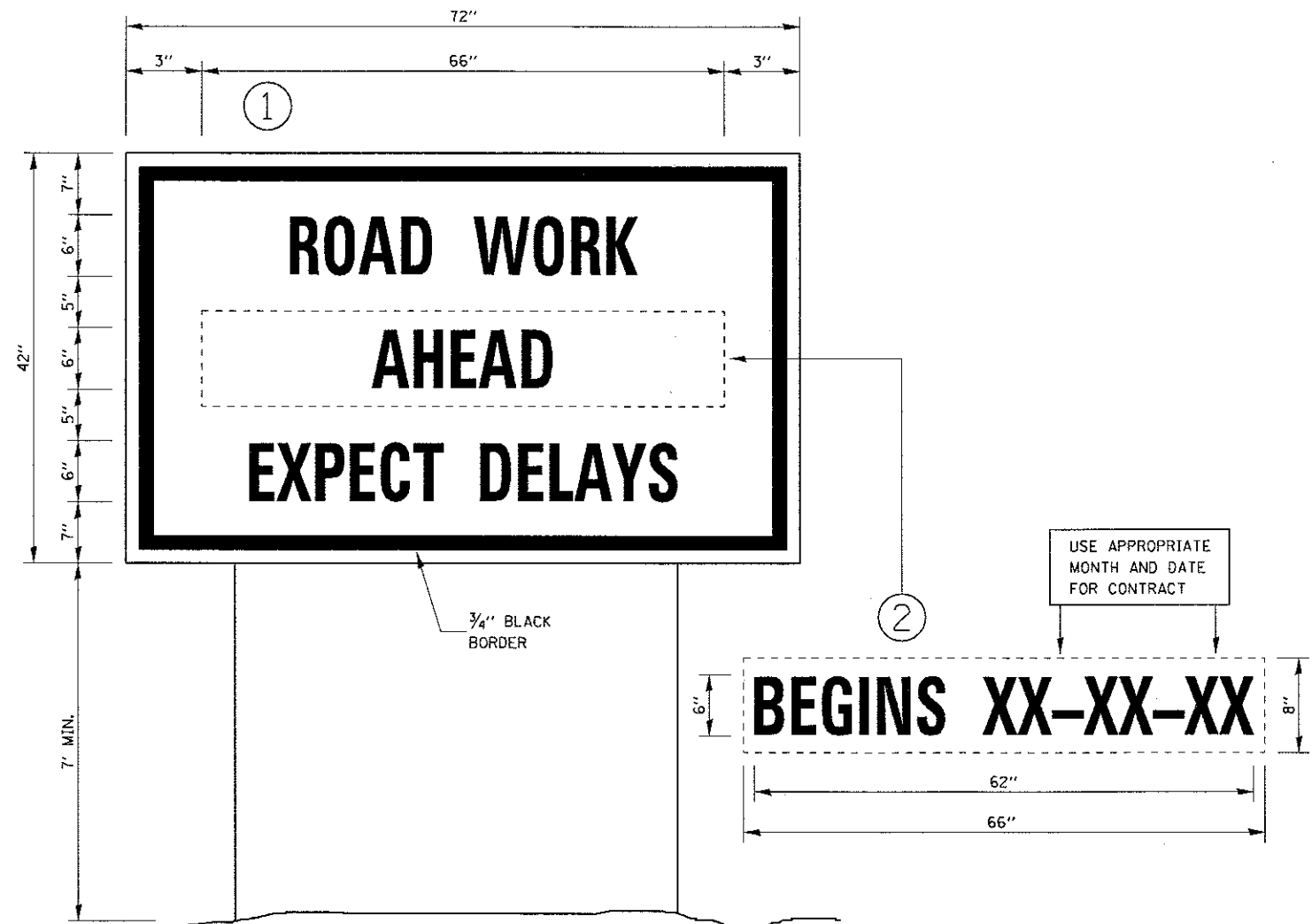
CLIENT:
VILLAGE OF DWIGHT
 209 S. Prairie Ave.
 Dwight, Illinois 60420
 (815) 554-3077

NO.	DATE	NATURE OF REVISION	CHKD.	BY
1	3/21/11	ADD 3/2/11 COMMENTS REVISIONS	KRC	CAD USER
2				
3				

TRAFFIC SIGNAL INSTALLATION PLAN
 IL ROUTE 47
 STA 283+00 TO STA 289+00
 IL ROUTE 47 AND NORTHBROOK DRIVE
 DWIGHT, ILLINOIS

PROJ. NO. 09-0390.003
 DATE: 3/21/2010
 SHEET 16 OF 25
 DRAWING NO.: TSD-1

FOR INFORMATION ONLY

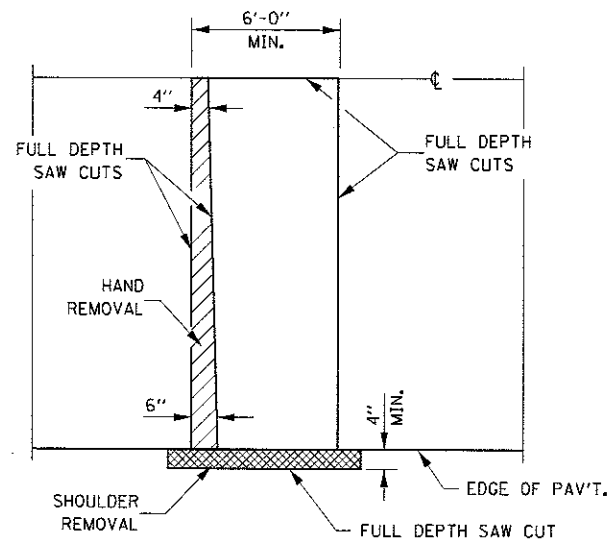


TEMPORARY INFORMATION SIGNING

NOTES:

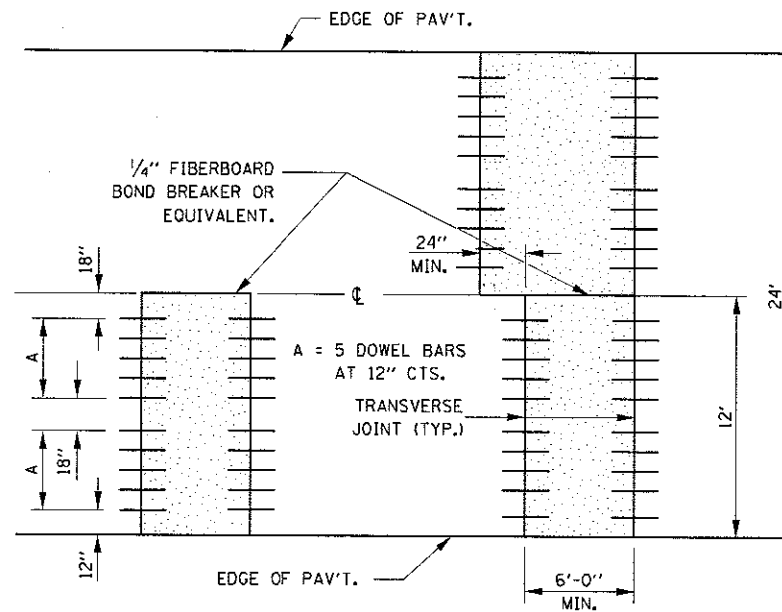
1. USE 6" D BLACK LETTERING ON FLOURESENT ORANGE BACKGROUND.
2. ERECT SIGNS AT LOCATIONS IN ADVANCE OF THE "ROAD CONSTRUCTION AHEAD" SIGNS AS DIRECTED BY THE ENGINEER.
3. ERECT SIGN ① WITH INSTALLED PANEL ② A MINIMUM OF ONE WEEK PRIOR TO THE START OF THE LANE CLOSURE.
4. REMOVE PANEL ② ON THAT DATE.
5. SEE SPECIAL PROVISION "TEMPORARY INFORMATION SIGNING" FOR ADDITIONAL INFORMATION.
6. WILL BE PAID FOR PER SQ FT AS "TEMPORARY INFORMATION SIGNING". EACH SIGN = 21 SQ FT AND THE DATE PANEL ② WILL NOT BE MEASURED SEPARATELY FOR PAYMENT.

FILE NAME =	USER NAME = woodshank-l	DESIGNED - RW	REVISED -	STATE OF ILLINOIS DEPARTMENT OF TRANSPORTATION	TEMPORARY INFORMATION SIGNING	F.A.P. RTE.	SECTION	COUNTY	TOTAL SHEETS	SHEET NO.	
p:\IL084EBIDINTEG.illinois.gov\PI\DOT\Documents\DOT Offices\District 3\Projects\0366\DRAWING\0366\RWdetails.dgn	DRAWN	REVISOR	REVISION			326	(119)PP	GRUNDY	24	22	
PLOT SCALE = 100.0000 / in.	CHECKED - EP	REVISOR	REVISION			CONTRACT NO. 66H32					
PLOT DATE = 5/25/2017	DATE - 3/6/2017	REVISOR	REVISION			ILLINOIS FED. AID PROJECT					
Default				SCALE: SHEET 1 OF 1 SHEETS STA. TO STA.							

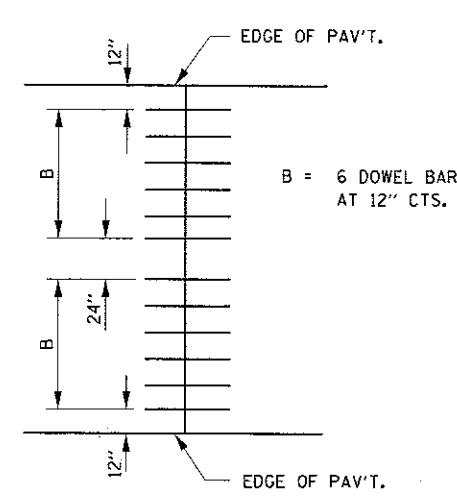


PAVEMENT SAWING DETAIL

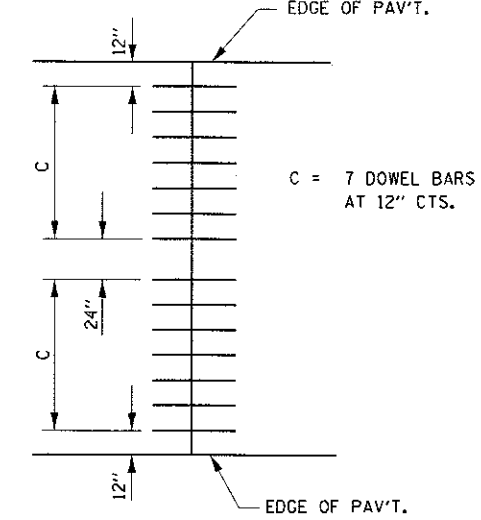
(HMA SHOULDER)



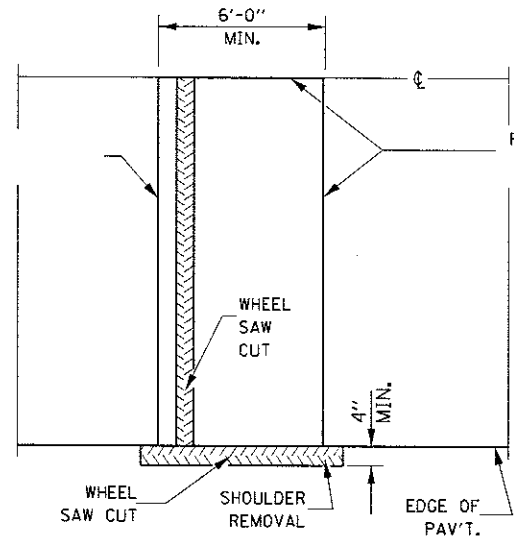
12' WIDE LANES



14' WIDE RAMP

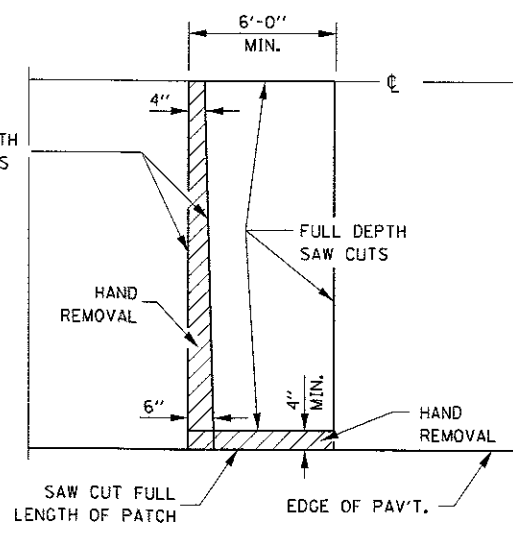


16' WIDE RAMP



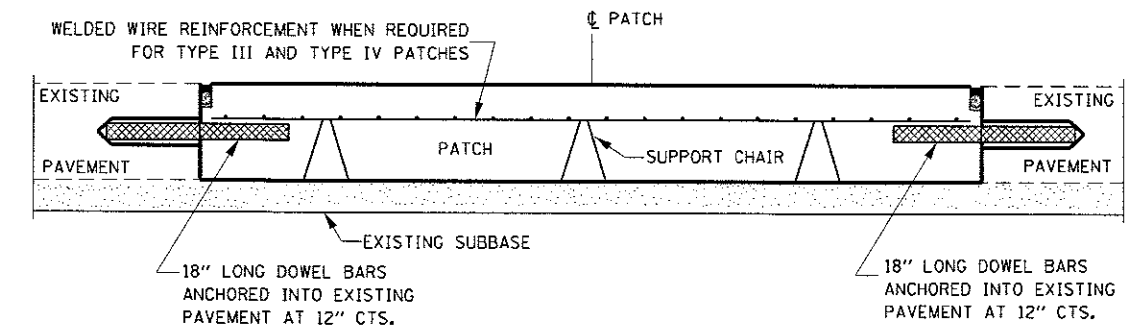
ALTERNATE SAWING DETAIL

(HMA SHOULDER)

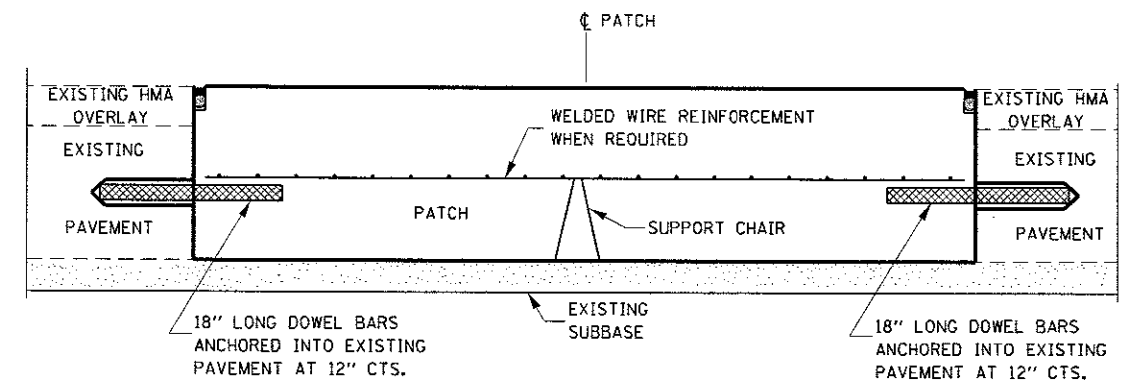


PAVEMENT SAWING DETAIL

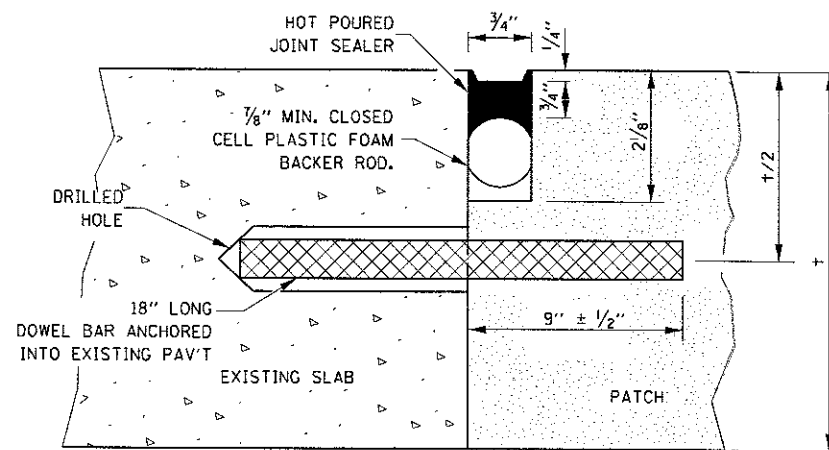
(PCC SHOULDER)



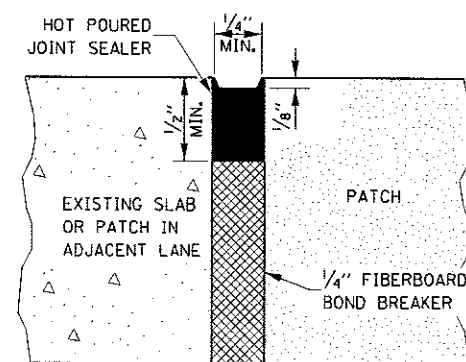
PATCHING WITHOUT HMA OVERLAY



PATCHING WITH HMA OVERLAY



TRANSVERSE JOINT

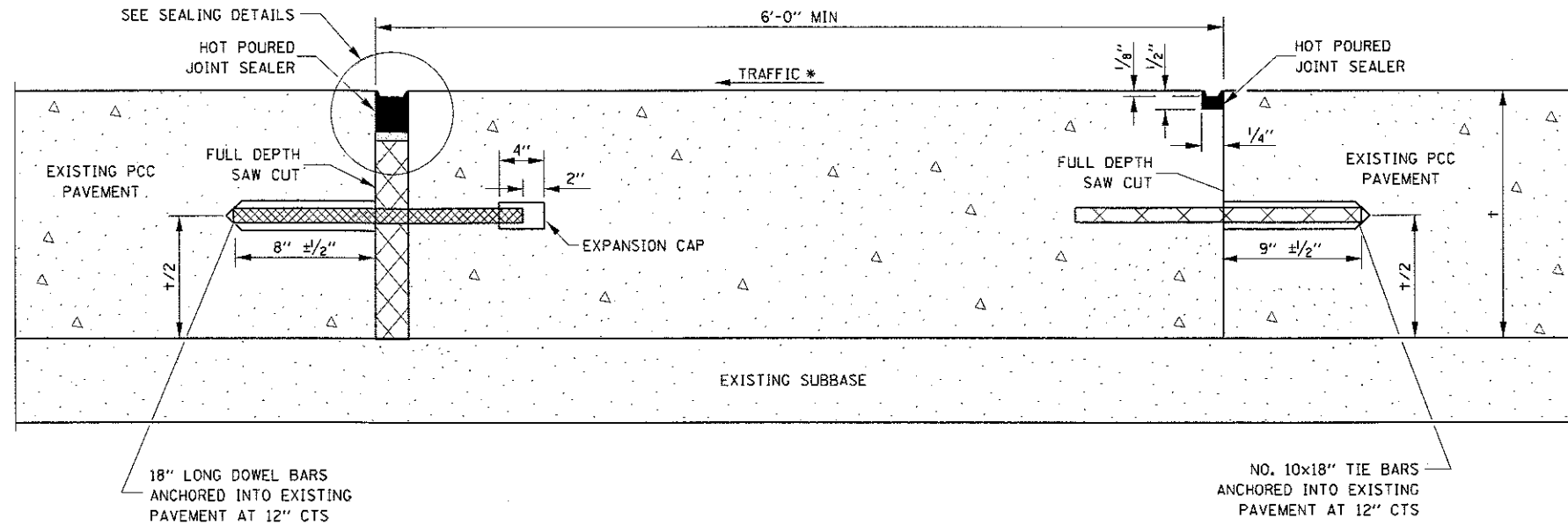


CENTERLINE JOINT

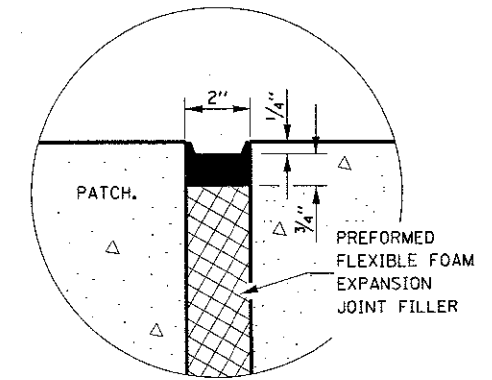
DOWEL BAR TABLE		
PAVEMENT THICKNESS	DOWEL BAR DIAMETER	HOLE DIAMETER
8" OR GREATER	1 1/2"	1 5/8"
7" THRU 7.99"	1 1/4"	1 3/8"
LESS THAN 7"	1"	1 1/8"

GENERAL NOTES

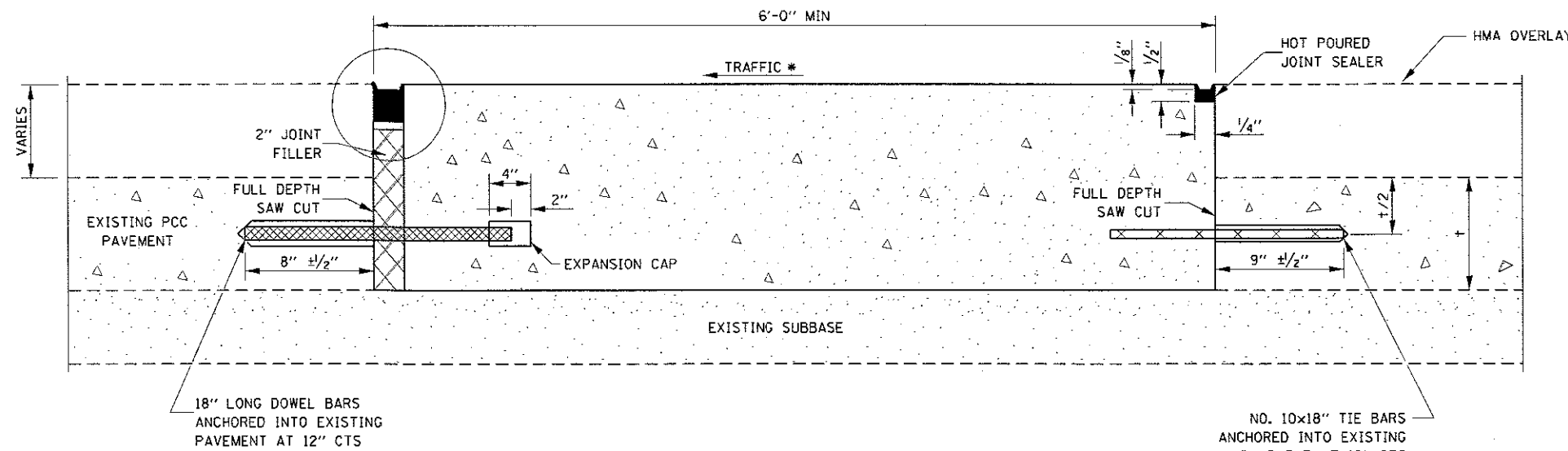
THE TRANSVERSE JOINTS FOR CLASS B PATCHES SHALL ALIGN WITH JOINTS OR CRACKS IN THE ADJACENT LANE WHENEVER POSSIBLE.
SEE STANDARD 420701 FOR DETAILS OF PAVEMENT WELDED WIRE REINFORCEMENT.



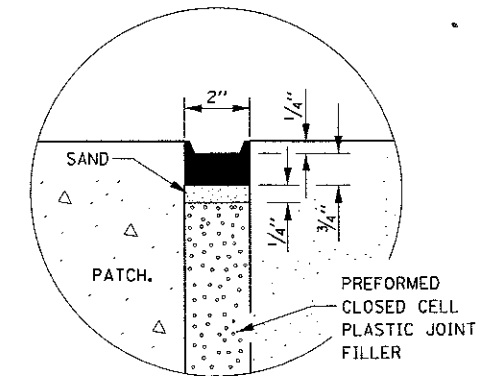
METHOD I
(WITHOUT HMA OVERLAY)



SEALING DETAIL



METHOD II
(WITH HMA OVERLAY)



SEALING DETAIL

NOTE

* WHEN RE-ESTABLISHING A TRANSVERSE EXPANSION JOINT ON A TWO-WAY ROAD, REVERSE THE ORIENTATION OF THE DOWEL BARS WITH RESPECT TO TRAFFIC FOR ONE OF THE PATCHES SUCH THAT THE JOINT WILL BE CONTINUOUS ACROSS BOTH LANES.

FILE NAME : p:\11084EBID\INTEG\Illinois.gov\PWIDOT\Documents\DOT Offices\District 3\Projects\0366\Drawings\0366HMA\Details.dgn	USER NAME = woodshankr1	DESIGNED - RW	REVISED -	STATE OF ILLINOIS DEPARTMENT OF TRANSPORTATION	CLASS B PATCHING DETAILS	F.A.P. RTE. 326	SECTION (119)PP	COUNTY GRUNDY	TOTAL SHEETS 24	SHEET NO. 24	
CONTRACT NO. 66H32	CHECKED - EP	REVISED -	SCALE:			SHEET 2 OF 2 SHEETS	STA. TO STA.	ILLINOIS FED. AID PROJECT			
DATE - 3/6/2017	REVISOR -	REVISED -									
PLOT DATE = 5/25/2017	DATE - 3/6/2017	REVISED -									