

**INDEX OF SHEETS**

| SHEET NO. | DESCRIPTION  |
|-----------|--|
| 1         | COVER SHEET  |
| 2         | INDEX OF SHEETS, STATE HIGHWAY STANDARDS, AND GENERAL NOTES  |
| 3-5       | SUMMARY OF QUANTITIES  |
| 6-8       | TYPICAL SECTIONS AND DETAILS   |
| 9-49      | PROPOSED ROADWAY AND PAVEMENT MARKING PLANS  |
| 50        | SEQUENCE OF CONSTRUCTION AND MAINTENANCE OF TRAFFIC  |
| 51-88     | PAVEMENT CORE SUMMARIES AND LOCATION MAPS  |
| 89-103    | ELECTRICAL PLANS   |
| 104-107   | STRUCTURE PLANS SN 016-0050  |
| 108-111   | STRUCTURE PLANS SN 016-0051  |
| 112       | BD-22 PAVEMENT PATCHING FOR HMA SURFACED PAVEMENT  |
| 113       | BD-32 BUTT JOINT AND HMA TAPER DETAILS   |
| 114       | TC-08 ENTRANCE AND EXIT RAMP CLOSURE DETAILS   |
| 115       | TC-09 TRAFFIC CONTROL FOR FREEWAY SINGLE & MULTI-LANE WEAVE  |
| 116       | TC-11 RAISED REFLECTIVE PAVEMENT MARKERS (SNOW-PLOW RESISTANT)   |
| 117-118   | TC-12 MULTI-LANE FREEWAY PAVEMENT MARKING DETAILS  |
| 119       | TC-13 DISTRICT ONE TYPICAL PAVEMENT MARKINGS   |
| 120       | TC-16 SHORT TERM PAVEMENT MARKING LETTERS AND SYMBOLS  |
| 121       | TC-17 TRAFFIC CONTROL DETAILS FOR FREEWAY SHOULDER CLOSURES AND PARTIAL RAMP CLOSURES                  |
| 122       | TC-18 FREEWAY/ EXPRESSWAY SIGNING FOR FLAGGING OPERATIONS AT WORK ZONE OPENINGS ON FREEWAY/ EXPRESSWAY |
| 123       | TC-22 ARTERIAL ROAD INFORMATIONAL SIGN   |
| 124       | TC-25 TRAFFIC CONTROL DETAILS FOR FREEWAY CENTER LANE CLOSURE SHOULDER LANE                            |
| 125       | TC-33 SMART TRAFFIC MONITORING SYSTEM TYPICAL LAYOUT   |

**STATE OF ILLINOIS HIGHWAY STANDARDS**

| STANDARD NO. | DESCRIPTION  |
|--------------|--|
| 000001-08    | STANDARD SYMBOLS, ABBREVIATIONS, AND PATTERNS                                  |
| 001001-02    | AREAS OF REINFORCEMENT BARS  |
| 001006       | DECIMAL OF AN INCH AND OF A FOOT   |
| 420001-10    | PAVEMENT JOINTS  |
| 442001-04    | CLASS A PATCHES  |
| 442201-03    | CLASS C AND D PATCHES  |
| 642001-03    | SHOULDER RUMBLE STRIPS, 16 IN.   |
| 701101-05    | OFF-ROAD OPERATIONS, MULTILANE, 15' TO 24" FROM PAVEMENT                       |
| 701106-02    | OFF-ROAD OPERATIONS, MULTILANE, MORE THAN 15' AWAY                             |
| 701400-11    | APPROACH TO LANE CLOSURE, FREEWAY/ EXPRESSWAY                                  |
| 701401-13    | LANE CLOSURE, FREEWAY/EXPRESSWAY   |
| 701411-09    | LANE CLOSURE, MULTILANE, AT ENTRANCE OR EXIT RAMP, FOR SPEEDS ≥ 45 MPH         |
| 701426-09    | LANE CLOSURE, MULTILANE, INTERMITTENT OR MOVING OPERATION, FOR SPEEDS ≥ 45 MPH |
| 701428-01    | TRAFFIC CONTROL SETUP AND REMOVAL FREEWAY/EXPRESSWAY                           |
| 701446-11    | TWO LANE CLOSURE FREEWAY/ EXPRESSWAY   |
| 701901-08    | TRAFFIC CONTROL DEVICES  |
| 781001-04    | TYPICAL APPLICATIONS RAISED REFLECTIVE PAVEMENT MARKERS                        |

**GENERAL NOTES**

- BEFORE STARTING ANY EXCAVATION, THE CONTRACTOR MUST CALL "J.U.L.I.E." AT (800) 892-0123 OR 811 FOR FIELD LOCATIONS OF BURIED ELECTRIC, TELEPHONE, AND GAS FACILITIES. NOTICE 48 HOURS IN ADVANCE IS REQUIRED.
- THE CONTRACTOR SHALL COORDINATE CONSTRUCTION ACTIVITIES WITH UTILITY COMPANIES, THE CITY OF MARKHAM, THE CITY OF OAK FOREST, THE CITY OF COUNTRY CLUB HILLS, THE VILLAGE OF MATTESON, THE VILLAGE OF RICHTON PARK, OTHER LOCAL GOVERNMENT AGENCIES, AND IDOT.
- THE CONTRACTOR MUST CONTACT THE EXPRESSWAY TRAFFIC CONTROL SUPERVISOR AT (847) 705-4155 A MINIMUM OF 72 HOURS PRIOR TO THE INSTALLATION OF ANY TEMPORARY TRAFFIC CONTROL DEVICES.
- DO NOT SCALE PLANS FOR CONSTRUCTION DIMENSIONS.
- PLAN DIMENSIONS AND DETAILS ARE SUBJECT TO ROUTINE VARIATIONS. THE CONTRACTOR SHALL VERIFY EXISTING DIMENSIONS AND DETAILS AFFECTING NEW CONSTRUCTION AND GAIN APPROVAL FOR NECESSARY ADJUSTMENTS PRIOR TO ORDERING MATERIALS. SUCH VARIATIONS SHALL NOT BE CAUSE FOR ADDITIONAL COMPENSATION IF THEY RESULT IN A CHANGE IN THE SCOPE OF THE WORK. HOWEVER, THE CONTRACTOR WILL BE PAID FOR QUANTITIES ACTUALLY FURNISHED, BASED ON THE BID UNIT PRICE.
- THE CONTRACTOR WILL NOT BE ALLOWED TO SET UP A YARD OR FIELD OFFICE ON STATE PROPERTY WITHOUT WRITTEN PERMISSION FROM THE DEPARTMENT.
- THE RESIDENT ENGINEER SHALL CONTACT REGINA COOPER, AREA TRAFFIC FIELD TECHNICIAN AT (847) 705-4153 A MINIMUM OF TWO (2) WEEKS PRIOR TO THE PLACEMENT OF PERMANENT PAVEMENT MARKINGS.
- BEFORE BEGINNING WORK, THE CONTRACTOR SHALL RETAIN AND RECORD FOR FUTURE REFERENCE ALL EXISTING PAVEMENT MARKING LINES, LETTERS AND SYMBOLS, AND RAISED REFLECTIVE PAVEMENT MARKERS, SO THAT THEIR LOCATIONS MAY BE REESTABLISHED. EXACT LOCATIONS OF ALL PAVEMENT MARKINGS AND RAISED REFLECTIVE PAVEMENT MARKERS SHALL BE AS DIRECTED BY THE RESIDENT ENGINEER.
- IMMEDIATELY AFTER THE COMPLETION OF CONSTRUCTION, THE CONTRACTOR SHALL RESTORE ALL PERMANENT PAVEMENT MARKINGS, SIGNS, AND OTHER TRAFFIC CONTROL DEVICES THAT WERE COVERED IF THEY WERE REMOVED, DAMAGED, OR OTHERWISE AFFECTED BY CONSTRUCTION. THE COST TO REPAIR ANY DAMAGES WILL BE BORNE BY THE CONTRACTOR AND WILL NOT BE THE RESPONSIBILITY OF THE DEPARTMENT.
- THE CONTRACTOR MUST EXERCISE CAUTION WHEN REMOVING OR EXCAVATING NEAR ALL EXISTING ITEMS WHICH ARE TO REMAIN. ANY DAMAGE DONE TO EXISTING ITEMS BY THE CONTRACTOR WILL BE REPAIRED AT THE CONTRACTOR'S EXPENSE.
- THE CONTRACTOR IS RESPONSIBLE FOR THE PROTECTION OF ALL UNDERGROUND AND SURFACE UTILITIES, EVEN THOSE NOT SHOWN IN PLANS. ANY UTILITY PROPERTY DAMAGED DURING CONSTRUCTION SHALL BE REPAIRED OR REPLACED TO THE SATISFACTION OF THE RESIDENT ENGINEER.
- NO MATERIAL OR EQUIPMENT SHALL BE LEFT ON OR NEAR THE ROADWAY DURING NON-WORKING HOURS.
- BUTT JOINTS WILL BE INSTALLED AS SHOWN IN THE PLANS (WHERE RESURFACING MEETS THE EXISTING PAVEMENT), AND TEMPORARY RAMPS WILL BE INSTALLED IN ACCORDANCE WITH THE DISTRICT ONE "BUTT JOINT AND HMA TAPER DETAILS" (BD-32).
- IDOT FACILITIES ARE NOT LOCATED BY JULIE OR DIGGER. IDOT ELECTRICAL FACILITIES INCLUDING ROADWAY LIGHTING, FIBER OPTIC, ITS EQUIPMENT, TRAFFIC SIGNAL AND PUMP STATION FACILITIES ARE LOCATED BY THE DEPARTMENT'S ELECTRICAL MAINTENANCE CONTRACTOR. AS OF THE LETTING DATE, CONTACT THE MEADE ELECTRIC COMPANY AT (773) 287-7672.
- ALL STAGE CHANGES REQUIRING THE STOPPING AND/OR PACING OF TRAFFIC SHALL TAKE PLACE DURING THE ALLOWABLE HOURS FOR FULL EXPRESSWAY CLOSURES AND SHALL BE APPROVED BY THE DEPARTMENT. THE CONTRACTOR SHALL NOTIFY THE DISTRICT ONE EXPRESSWAY TRAFFIC CONTROL SUPERVISOR AT LEAST 3 WORKING DAYS (WEEKENDS AND HOLIDAYS DO NOT COUNT IN THIS 72 HOUR NOTIFICATION) IN ADVANCE OF ANY PROPOSED STAGE CHANGE.
- THE CONTRACTOR SHALL REQUEST AND GAIN APPROVAL FROM THE ILLINOIS DEPARTMENT OF TRANSPORTATION'S EXPRESSWAY TRAFFIC OPERATIONS ENGINEER AT WWW.IDOTLCS.COM TWENTY-FOUR (24) HOURS IN ADVANCE OF ALL DAILY LANE, RAMP, AND SHOULDER CLOSURES AND 7 DAYS IN ADVANCE OF ALL PERMANENT AND WEEKEND CLOSURES ON ALL FREEWAYS AND/OR EXPRESSWAYS IN DISTRICT ONE, THIS ADVANCE NOTIFICATION IS CALCULATED BASED ON A WORK-WEEK OF MONDAY THROUGH FRIDAY AND SHALL NOT INCLUDE WEEKENDS OR HOLIDAYS.
- STATIONS AND OFFSETS SHOWN IN PLANS ARE APPROXIMATE.
- THE CONTRACTOR SHALL REMOVE ALL TRAFFIC CONTROL DEVICES USED FOR TEMPORARY LANE, RAMP, PARTIAL RAMP AND SHOULDER CLOSURES FROM THE IDOT ROW AT THE END OF EACH WORKING DAY/NIGHT. TRAFFIC CONTROL DEVICES USED FOR STAGED CONSTRUCTION OR SMART WORK ZONE MAY REMAIN WHILE IN STAGE.
- TREE REMOVAL AND PRUNING SHALL ONLY BE ALLOWED DURING NOVEMBER 1 TO MARCH 30 DUE TO THE ENDANGERED NORTHERN LONG EARED BAT.
- CONTACT THE IDOT ROADSIDE DEVELOPMENT UNIT AT 847.705.4596 AT LEAST 3 WEEKS PRIOR TO BEGINNING FORESTRY WORK, WEED CONTROL, TREE CARE, MULCH PLACEMENT, SEEDING, AND INTERSEEDING FOR LAYOUT.
- THE CONTRACTOR SHALL OBSERVE AND COMPLY WITH ALL SECTIONS OF THE ILLINOIS CUSTOM SPRAY LAW, INCLUDING LICENSING. CONTRACTOR PERSONNEL APPLYING HERBICIDES SHALL HAVE A VALID PESTICIDE APPLICATOR LICENSE ISSUED BY THE ILLINOIS DEPARTMENT OF AGRICULTURE. THE LICENSED PESTICIDE APPLICATOR SHALL SUBMIT THEIR CURRENT LICENSE TO THE ENGINEER. THE LICENSED PESTICIDE APPLICATOR SHALL BE QUALIFIED AT A MINIMUM IN RIGHT-OR-WAY AND AQUATICS. THE LICENSED APPLICATOR SHALL WORK ON-SITE.

**COMMITMENTS**

NONE.



△ REVISED 7-21-2023

MODEL: D:\p1\m1\10 - 674296\CD\CD-CADD-Sheets\CD\10-674296-CD-CADD-Sheets.dwg 10 - 674296\CD\CD-CADD-Sheets\CD\10-674296-CD-CADD-Sheets.dwg



|                            |                   |                          |
|----------------------------|-------------------|--------------------------|
| USER NAME = jdavies        | DESIGNED - JJD    | REVISED - 07-21-2023 JJD |
|                            | DRAWN - JLS       | REVISED -                |
| PLOT SCALE = 2.0000' / in. | CHECKED - JJD     | REVISED -                |
| PLOT DATE = 7/21/2023      | DATE - 05 12 2023 | REVISED -                |

**STATE OF ILLINOIS  
DEPARTMENT OF TRANSPORTATION**

**INDEX OF SHEETS, STATE HIGHWAY STANDARDS, AND GENERAL NOTES  
I-57 SMART OVERLAY: WILL COUNTY LINE TO US 6**

SCALE: NONE | SHEET 1 OF 1 SHEETS | STA. DELETE TAG TO STA. DELETE TAG

| F.A.I. RTE.        | SECTION     | COUNTY | TOTAL SHEETS                        | SHEET NO. |
|--------------------|-------------|--------|-------------------------------------|-----------|
| 57                 | 2021-003-RS | COOK   | 125                                 | 2         |
| CONTRACT NO. 62N36 |             |        | ILLINOIS FED. AID PROJECT RBV9(665) |           |

| CODE NO.   | ITEM   | UNIT   | TOTAL QUANTITY | CONSTR. CODE              |            |
|------------|--|--------|----------------|---------------------------|------------|
|            |  |        |                | 90% FED 10% STATE ROADWAY | 0005 URBAN |
| X2010350   | TREE REMOVAL, ACRES (SPECIAL)                | ACRE   | 85             | 85                        |            |
| X2503315   | INTERSEEDING, CLASS 4A (MODIFIED)            | ACRE   | 80             | 80                        |            |
| X2503110   | MOWING (SPECIAL)                             | ACRE   | 50             | 50                        |            |
| X6700410   | ENGINEER'S FIELD OFFICE, TYPE A (SPECIAL)    | CAL MO | 12             | 12                        |            |
| X7010238   | CHANGEABLE MESSAGE SIGN (SPECIAL)            | CAL MO | 70             | 70                        |            |
| X7011015   | TRAFFIC CONTROL AND PROTECTION (EXPRESSWAYS) | L SUM  | 1              | 1                         |            |
| * X8300001 | LIGHT POLE SPECIAL                           | EACH   | 12             | 12                        |            |
| X8570000   | SMART TRAFFIC MONITORING SYSTEM              | L SUM  | 1              | 1                         |            |
| * X8710101 | ETHERNET MANAGE SWITCH                       | EACH   | 9              | 9                         |            |
| * X8710306 | FIBER OPTIC SPLICE-MAINLINE                  | EACH   | 9              | 9                         |            |
| Z0030850   | TEMPORARY INFORMATION SIGNING                | SQ FT  | 52             | 52                        |            |
| Z0034105   | MATERIAL TRANSFER DEVICE                     | TON    | 51528          | 51528                     |            |
| Z0064600   | SELECTIVE CLEARING                           | ACRE   | 15             | 15                        |            |
| X1400211   | LIGHT POLE, SPECIAL, 30'                     | EACH   | 12             | 12                        |            |
| Ø Z0076600 | TRAINEES                                     | HOURS  | 1000           | 1000                      |            |
| Ø Z0076604 | TRAINEES - TRAINING PROGRAM GRADUATE         | HOURS  | 1000           | 1000                      |            |



\* - SPECIALTY ITEMS

REVISED 7-21-2023

MODEL: SPS\_3 FILE NAME: S:\2021\willcountysmartoverlay\summaryofquantities\DOT\_DVM\WD\_10\_147N\ARC\DDC\CADD-Sheet\11010238.dwg - 10/25/2023



|                              |                   |           |
|------------------------------|-------------------|-----------|
| USER NAME = jdavls           | DESIGNED - JJD    | REVISED - |
|                              | DRAWN - DW        | REVISED - |
| PLOT SCALE = 100.0000' / in. | CHECKED - JJD     | REVISED - |
| PLOT DATE = 5/12/2023        | DATE - 05-12-2023 | REVISED - |

STATE OF ILLINOIS  
DEPARTMENT OF TRANSPORTATION

SUMMARY OF QUANTITIES  
I-57 SMART OVERLAY: WILL COUNTY LINE TO US 6

SCALE: NONE | SHEET 2 OF 2 SHEETS | STA. TO STA.

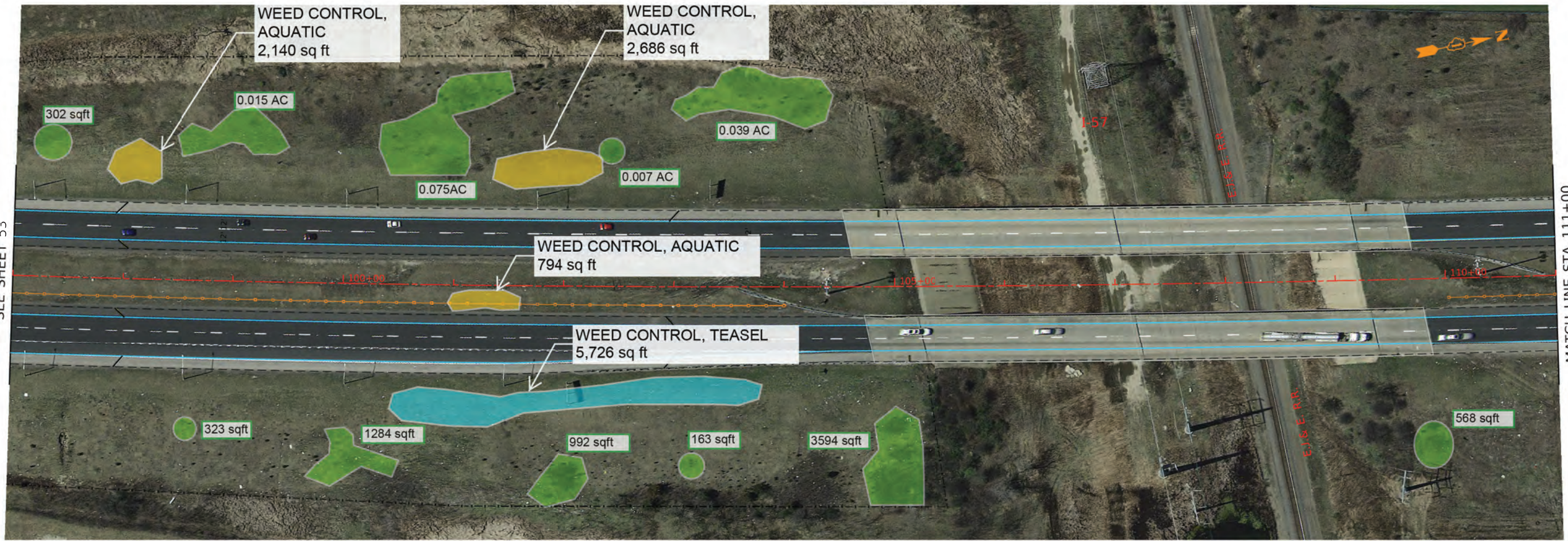
| F.A.I. RTE.        | SECTION     | COUNTY | TOTAL SHEETS | SHEET NO. |
|--------------------|-------------|--------|--------------|-----------|
| 57                 | 2021-003-R5 | COOK   | 125          |           |
| CONTRACT NO. 62N36 |             |        | Ø 0042       |           |

[ ILLINOIS ] FED. AID PROJECT RBV9(665)



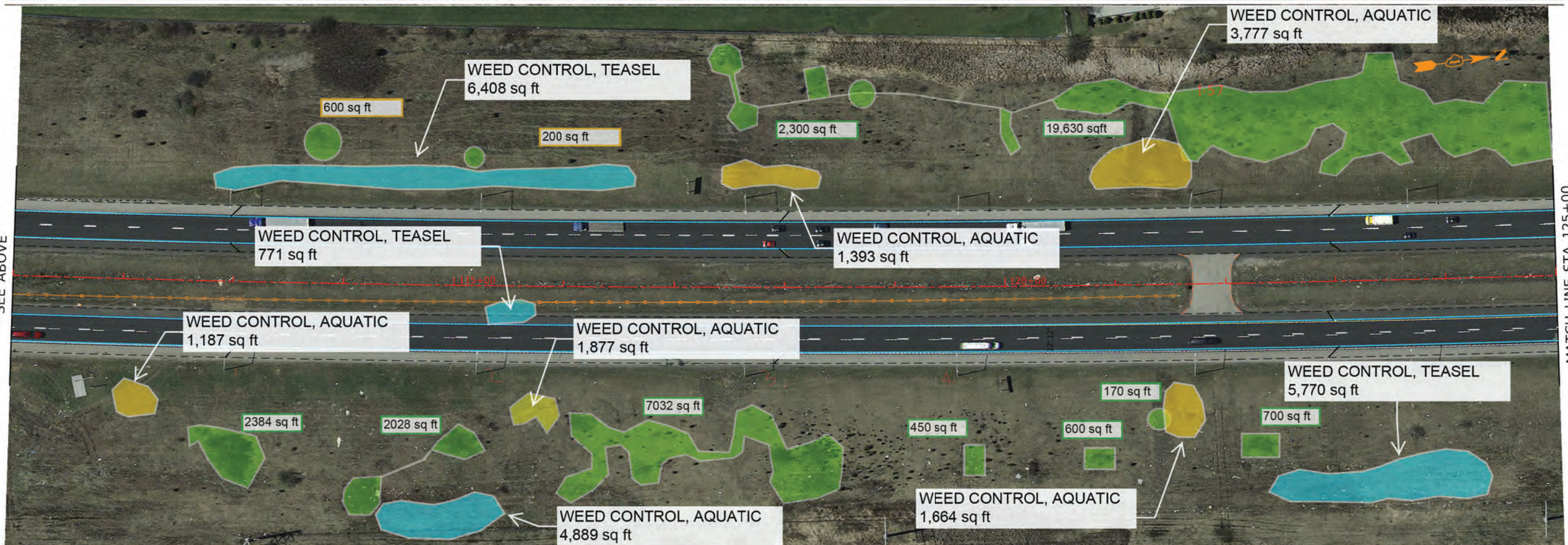


MATCH LINE STA 97+00  
SEE SHEET 53



MATCH LINE STA 111+00  
SEE BELOW

MATCH LINE STA 111+00  
SEE ABOVE



MATCH LINE STA 125+00  
SEE SHEET 55

|                          |                   |                          |
|--------------------------|-------------------|--------------------------|
| USER NAME = jdavls       | DESIGNED -        | REVISED - 07-24-2023 JJD |
|                          | DRAWN -           | REVISED -                |
| PLOT SCALE = 1,000' / 1" | CHECKED -         | REVISED -                |
| PLOT DATE = 7/24/2023    | DATE - 05-12-2023 | REVISED -                |

**STATE OF ILLINOIS  
DEPARTMENT OF TRANSPORTATION**

**LANDSCAPING PLANS**

**I-57 SMART OVERLAY: WILL COUNTY LINE TO US 6**

SCALE: SHEET OF SHEETS STA. TO STA.

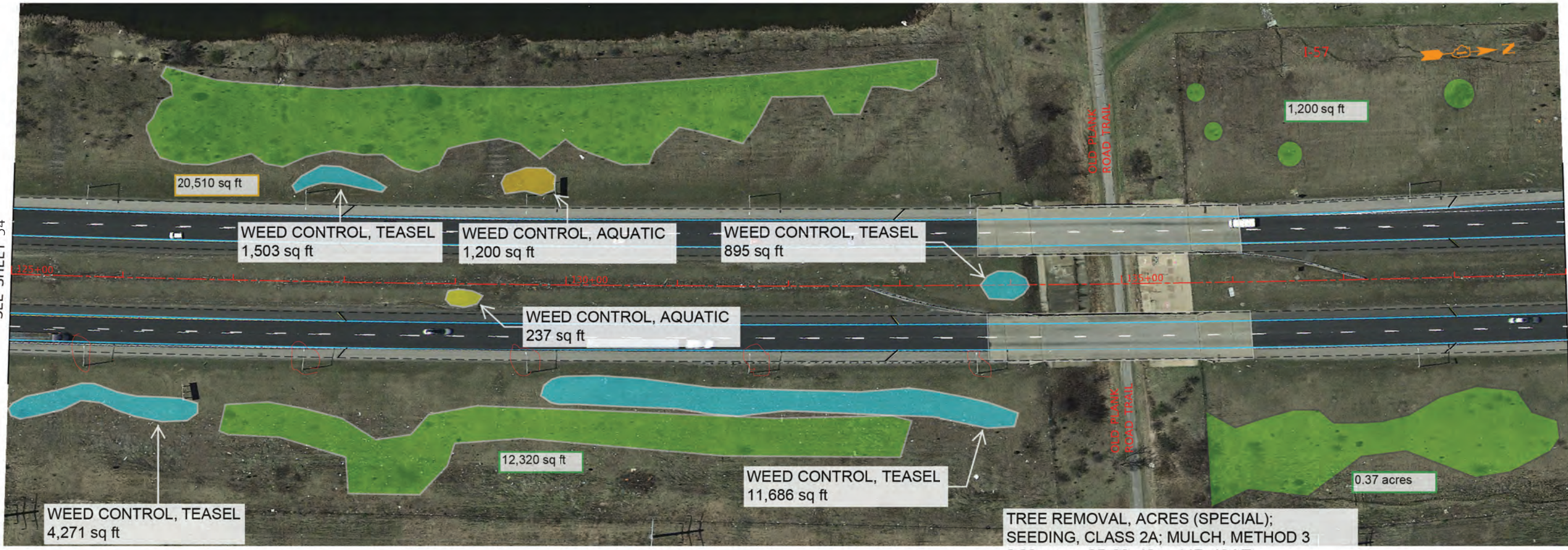
|                    |             |        |                                     |           |
|--------------------|-------------|--------|-------------------------------------|-----------|
| F.A.I. RTE.        | SECTION     | COUNTY | TOTAL SHEETS                        | SHEET NO. |
| 57                 | 2021-003-R5 | COOK   | 125                                 | 54        |
| CONTRACT NO. 62N36 |             |        | ILLINOIS FED. AID PROJECT RBV9(665) |           |





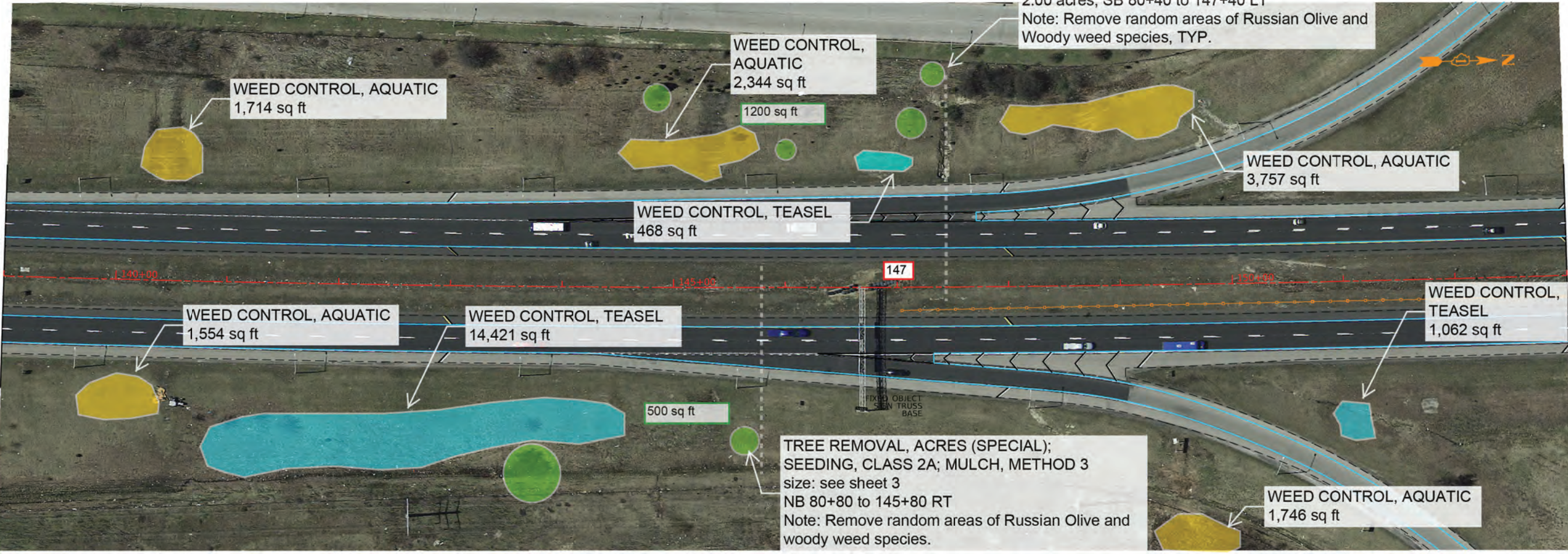
MATCH LINE STA 125+00  
SEE SHEET 54

MATCH LINE STA 139+00  
SEE BELOW



MATCH LINE STA 139+00  
SEE ABOVE

MATCH LINE STA 153+00  
SEE SHEET 56



FILE: \\nrc\ge\Engineering\Irrigation\Projects\30005\_IDOT\_DRAIN\10\_62N36\CADD\CADD\_Sheets\CADD\102678\62N36-10-23-25.dgn

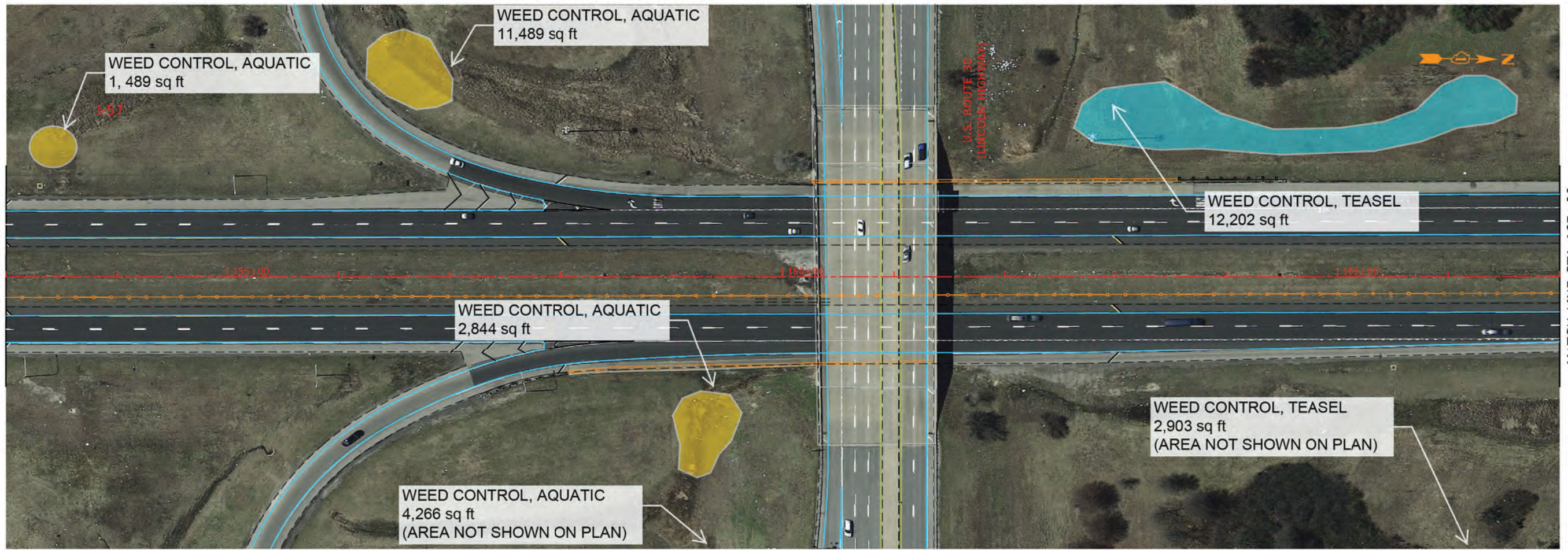
|                          |                   |           |                |
|--------------------------|-------------------|-----------|----------------|
| USER NAME = jdvalls      | DESIGNED -        | REVISED - | 07-24-2023 JJD |
| PLOT SCALE = 1,000' / 1" | DRAWN -           | REVISED - |                |
| PLOT DATE = 7/24/2023    | CHECKED -         | REVISED - |                |
|                          | DATE - 05-12-2023 | REVISED - |                |

**STATE OF ILLINOIS  
DEPARTMENT OF TRANSPORTATION**

|   |       |           |              |
|---|-------|-----------|--------------|
| <b>LANDSCAPING PLANS</b>                            |       |           |              |
| <b>I-57 SMART OVERLAY: WILL COUNTY LINE TO US 6</b> |       |           |              |
| SCALE:  | SHEET | OF SHEETS | STA. TO STA. |

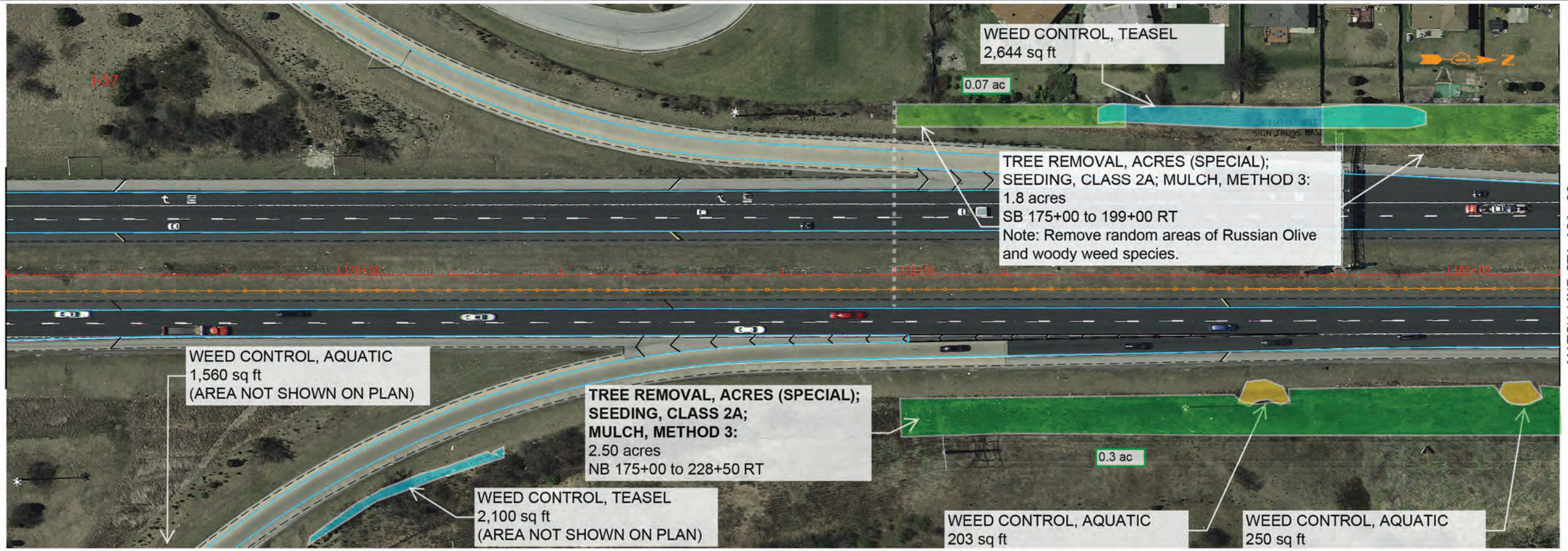
|                                     |             |        |              |           |
|-------------------------------------|-------------|--------|--------------|-----------|
| F.A.I. RTE.                         | SECTION     | COUNTY | TOTAL SHEETS | SHEET NO. |
| 57                                  | 2021-003-RS | COOK   | 125          | 55        |
| CONTRACT NO. 62N36                  |             |        |              |           |
| ILLINOIS FED. AID PROJECT RBV9(665) |             |        |              |           |





MATCH LINE STA 153+00  
SEE SHEET 55

MATCH LINE STA 167+00  
SEE BELOW



MATCH LINE STA 167+00  
SEE ABOVE

MATCH LINE STA 181+00  
SEE SHEET 57

|                           |                   |                          |
|---------------------------|-------------------|--------------------------|
| USER NAME = jdavls        | DESIGNED -        | REVISED - 07-24-2023 JJD |
| PLOT SCALE = 1,000' / In. | DRAWN -           | REVISED -                |
| PLOT DATE = 7/24/2023     | CHECKED -         | REVISED -                |
|                           | DATE - 05-12-2023 | REVISED -                |

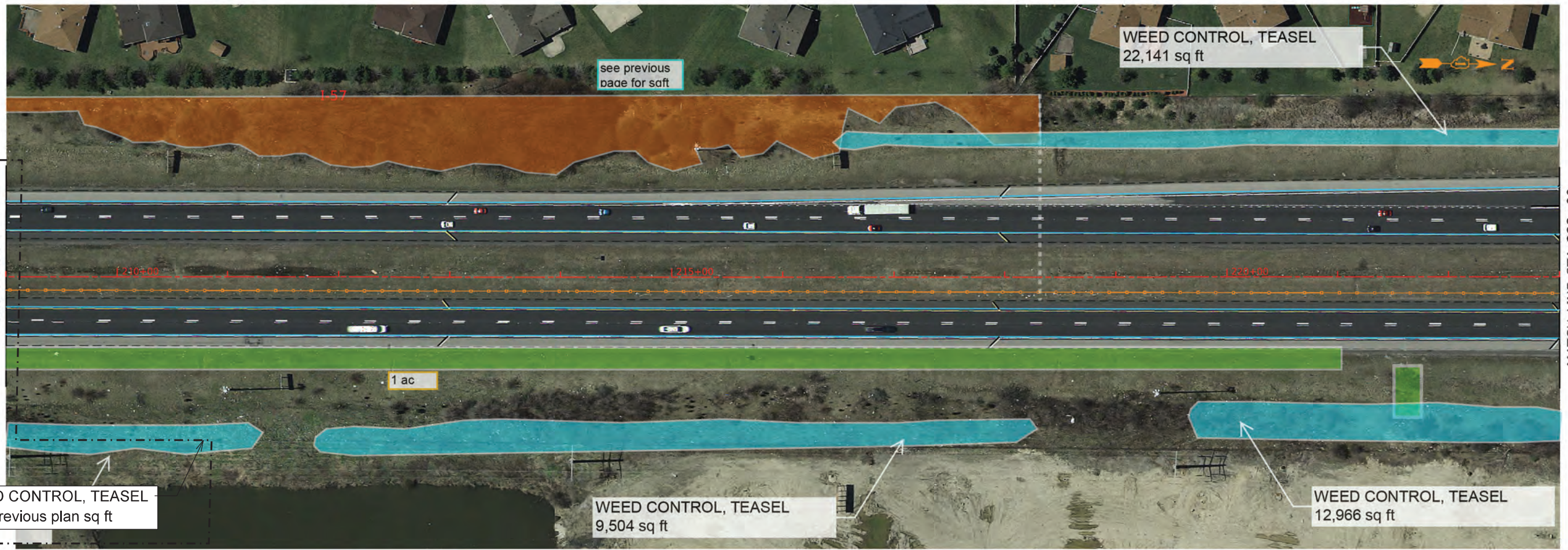
STATE OF ILLINOIS  
DEPARTMENT OF TRANSPORTATION

| LANDSCAPING PLANS                            |       |           |              |
|--|-------|-----------|--------------|
| I-57 SMART OVERLAY: WILL COUNTY LINE TO US 6 |       |           |              |
| SCALE:                                       | SHEET | OF SHEETS | STA. TO STA. |

| F.A.I. RTE.                         | SECTION     | COUNTY | TOTAL SHEETS | SHEET NO. |
|-------------------------------------|-------------|--------|--------------|-----------|
| 57                                  | 2021-003-R5 | COOK   | 125          | 56        |
| CONTRACT NO. 62N36                  |             |        |              |           |
| ILLINOIS FED. AID PROJECT RBV9(665) |             |        |              |           |

I:\Projects\62N36\62N36\_CADD\CADD\_Sheets\City\ID162\162R56-162R56-6.dgn  
 FILE: \\nrc\cgs\Engineering\Users\Projects\62N36\62N36\_CADD\CADD\_Sheets\City\ID162\162R56-162R56-6.dgn





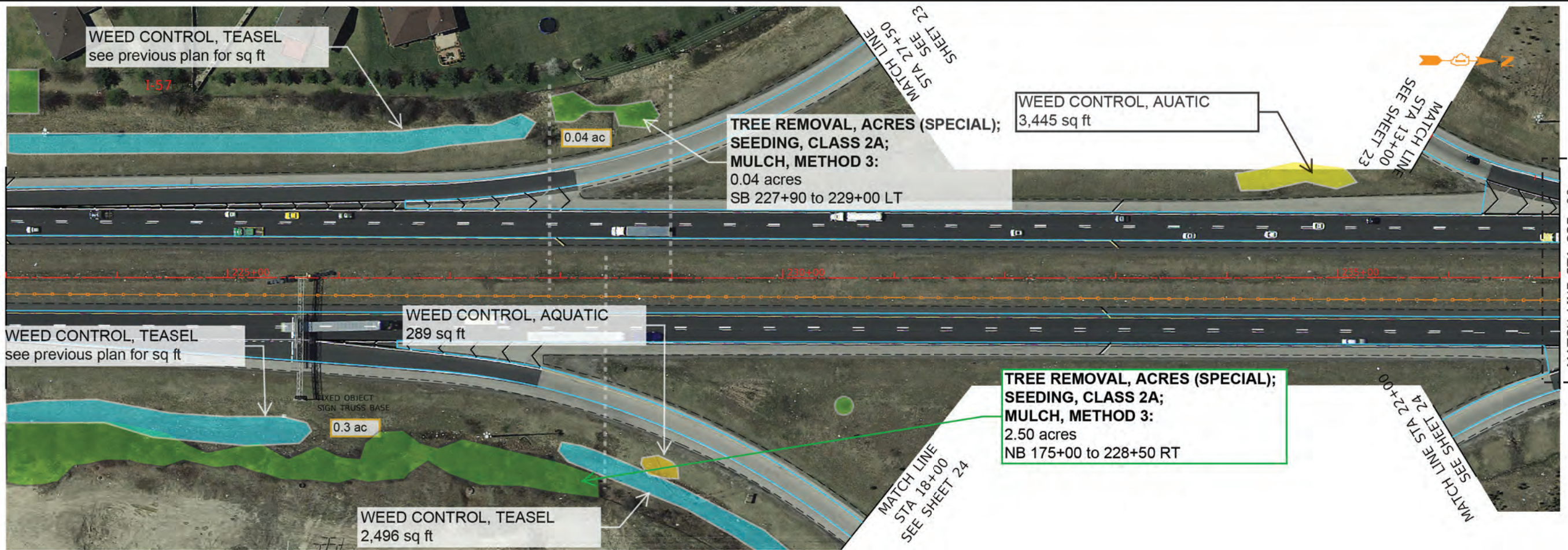
MATCH LINE STA 209+00  
SEE SHEET 57

MATCH LINE STA 223+00  
SEE BELOW

WEED CONTROL, TEASEL  
See previous plan sq ft

WEED CONTROL, TEASEL  
9,504 sq ft

WEED CONTROL, TEASEL  
12,966 sq ft



MATCH LINE STA 223+00  
SEE ABOVE

MATCH LINE STA 237+00  
SEE SHEET 59

WEED CONTROL, TEASEL  
see previous plan for sq ft

TREE REMOVAL, ACRES (SPECIAL);  
SEEDING, CLASS 2A;  
MULCH, METHOD 3:  
0.04 acres  
SB 227+90 to 229+00 LT

WEED CONTROL, AQUATIC  
3,445 sq ft

WEED CONTROL, TEASEL  
see previous plan for sq ft

WEED CONTROL, AQUATIC  
289 sq ft

TREE REMOVAL, ACRES (SPECIAL);  
SEEDING, CLASS 2A;  
MULCH, METHOD 3:  
2.50 acres  
NB 175+00 to 228+50 RT

WEED CONTROL, TEASEL  
2,496 sq ft

MODEL: Default  
FILE: N:\a\c\62N36\CADD\I-57\_Smart\_Overlay\_Will\_County\_Line\_to\_US\_6\_Sheets\CADD\I-57\_Smart\_Overlay\_Will\_County\_Line\_to\_US\_6\_Sheets\62N36-58.dwg

|                           |                   |                          |
|---------------------------|-------------------|--------------------------|
| USER NAME = jdavls        | DESIGNED -        | REVISED - 07-24-2023 JJD |
|                           | DRAWN -           | REVISED -                |
| PLOT SCALE = 1,000' / In. | CHECKED -         | REVISED -                |
| PLOT DATE = 7/24/2023     | DATE - 05-12-2023 | REVISED -                |

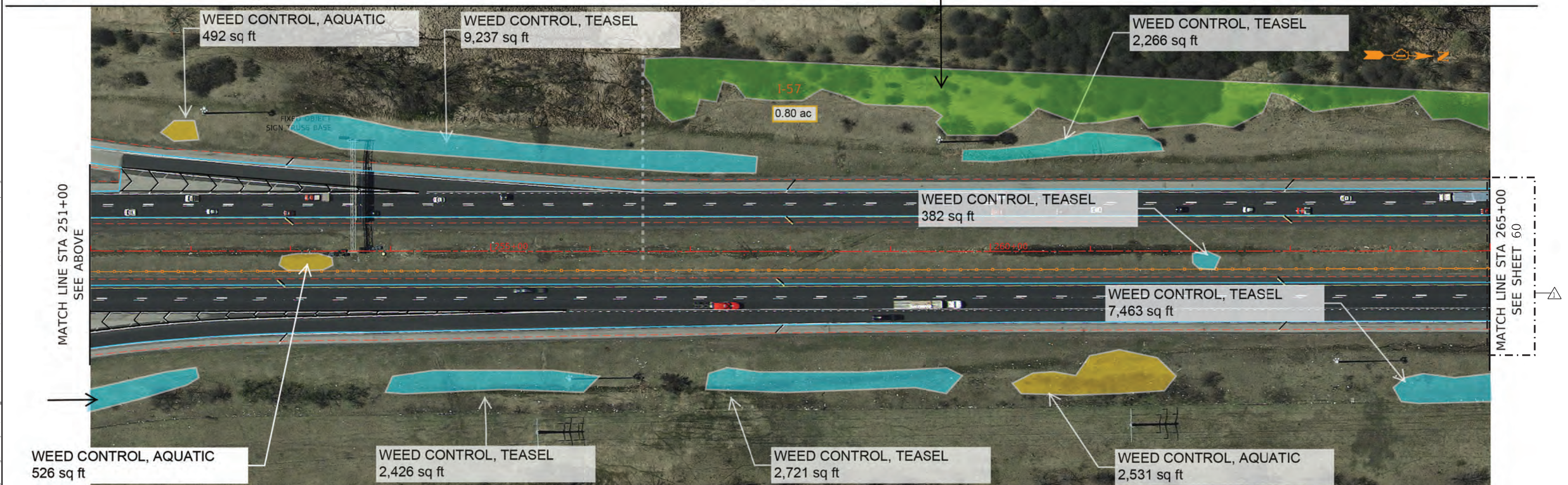
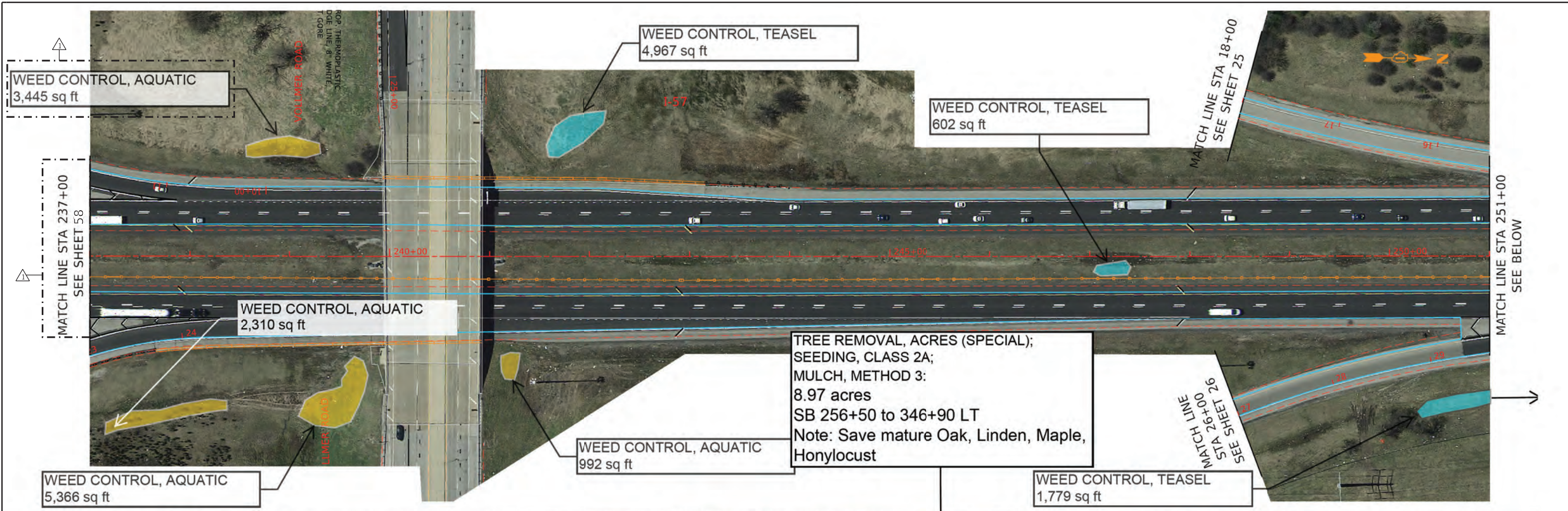
STATE OF ILLINOIS  
DEPARTMENT OF TRANSPORTATION

LANDSCAPING PLANS  
I-57 SMART OVERLAY: WILL COUNTY LINE TO US 6

| F.A.I. RTE.                         | SECTION     | COUNTY | TOTAL SHEETS | SHEET NO. |
|-------------------------------------|-------------|--------|--------------|-----------|
| 57                                  | 2021-003-R5 | COOK   | 125          | 58        |
| CONTRACT NO. 62N36                  |             |        |              |           |
| ILLINOIS FED. AID PROJECT RBV9(665) |             |        |              |           |

SCALE: SHEET OF SHEETS STA. TO STA.





MODEL: D:\m\ill\proj\62N36\CADD\CADD\_Sheets\CADD\_Sheets\I-57\_Smart\_Overlay\_Will\_County\_Line\_to\_US\_6.dgn  
 FILE: M:\proj\62N36\CADD\CADD\_Sheets\CADD\_Sheets\I-57\_Smart\_Overlay\_Will\_County\_Line\_to\_US\_6.dgn

|                           |                   |           |                |
|---------------------------|-------------------|-----------|----------------|
| USER NAME = jdavls        | DESIGNED -        | REVISED - | 07-24-2023 JJD |
|                           | DRAWN -           | REVISED - |                |
| PLOT SCALE = 1,000' / in. | CHECKED -         | REVISED - |                |
| PLOT DATE = 7/24/2023     | DATE - 05-12-2023 | REVISED - |                |

**STATE OF ILLINOIS  
DEPARTMENT OF TRANSPORTATION**

**LANDSCAPING PLANS**  
**I-57 SMART OVERLAY: WILL COUNTY LINE TO US 6**

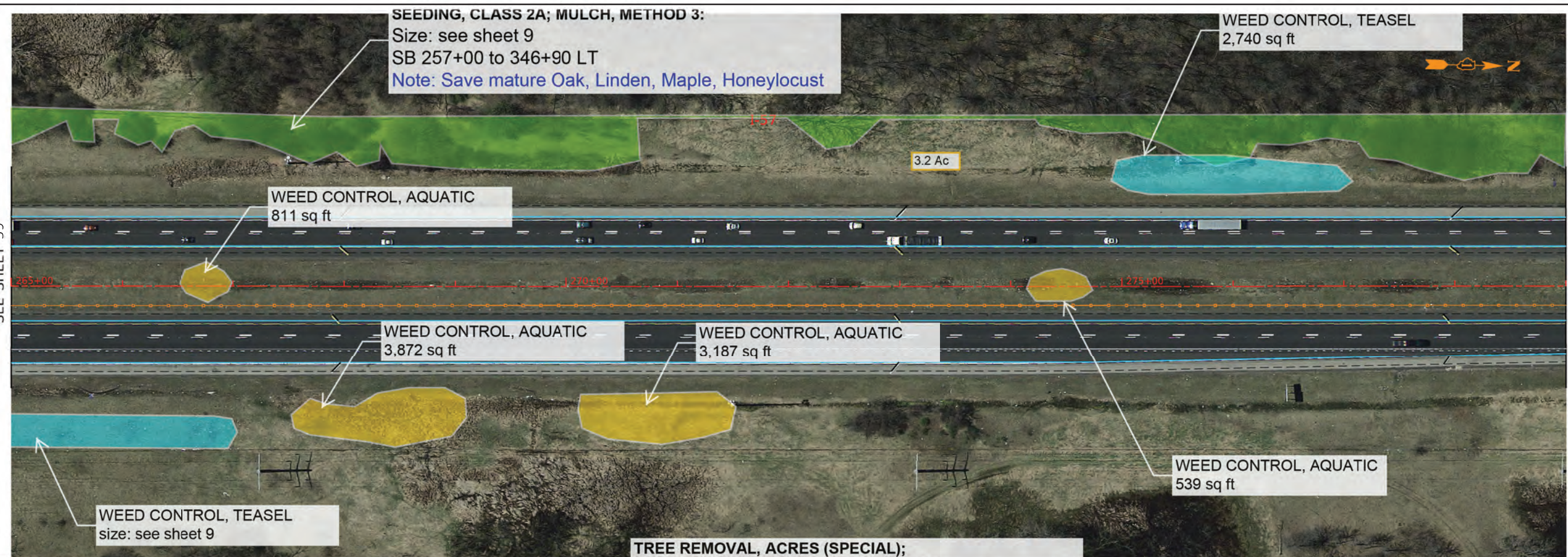
SCALE:      SHEET      OF      SHEETS      STA.      TO      STA.

|                                       |             |        |              |           |
|---------------------------------------|-------------|--------|--------------|-----------|
| F.A.I. RTE.                           | SECTION     | COUNTY | TOTAL SHEETS | SHEET NO. |
| 57                                    | 2021-003-R5 | COOK   | 125          | 59        |
| CONTRACT NO. 62N36                    |             |        |              |           |
| ILLINOIS   FED. AID PROJECT RBV9(665) |             |        |              |           |



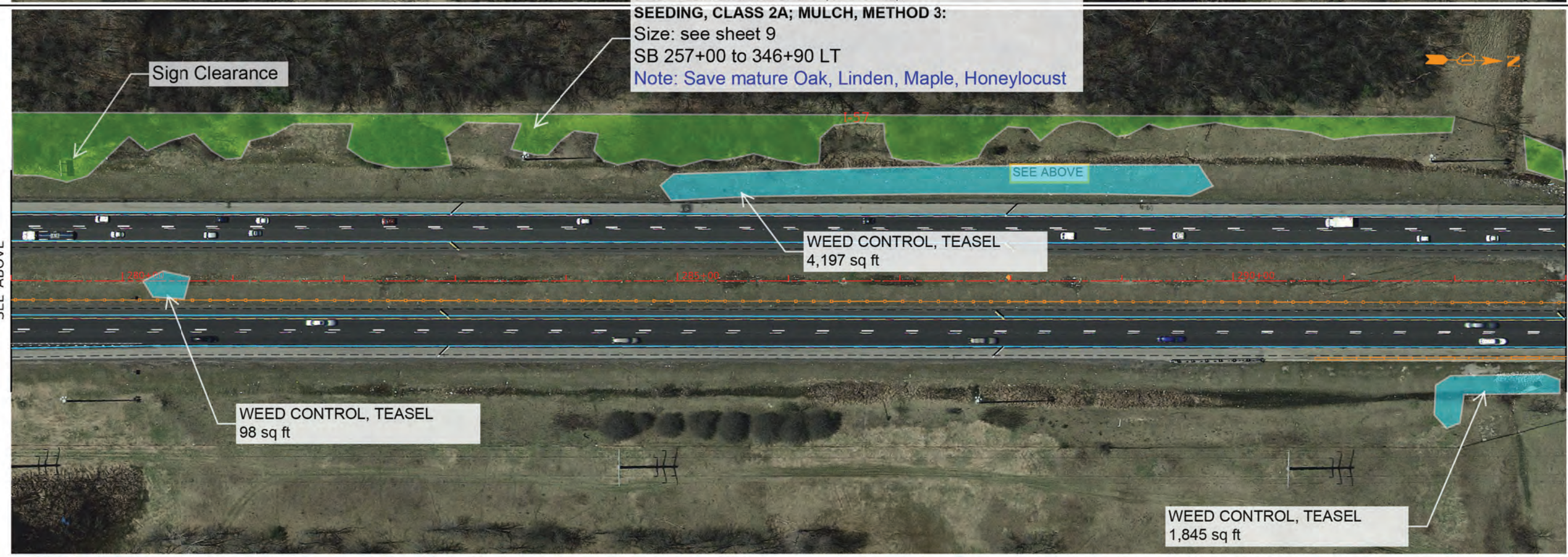


MATCH LINE STA 265+00  
SEE SHEET 59



MATCH LINE STA 279+00  
SEE BELOW

MATCH LINE STA 279+00  
SEE ABOVE



MATCH LINE STA 293+00  
SEE SHEET 61

\\s01\proj\62N36\CADD\Drawings\DOT\DWG\10 - 62N36\CADD\CADD\_Sheets\CADD\102678\62N36-10-62N36.dgn

|                           |                   |           |                |
|---------------------------|-------------------|-----------|----------------|
| USER NAME = jdavis        | DESIGNED -        | REVISED - | 07-24-2023 JJD |
|                           | DRAWN -           | REVISED - |                |
| PLOT SCALE = 1,000' / In. | CHECKED -         | REVISED - |                |
| PLOT DATE = 7/24/2023     | DATE - 05-12-2023 | REVISED - |                |

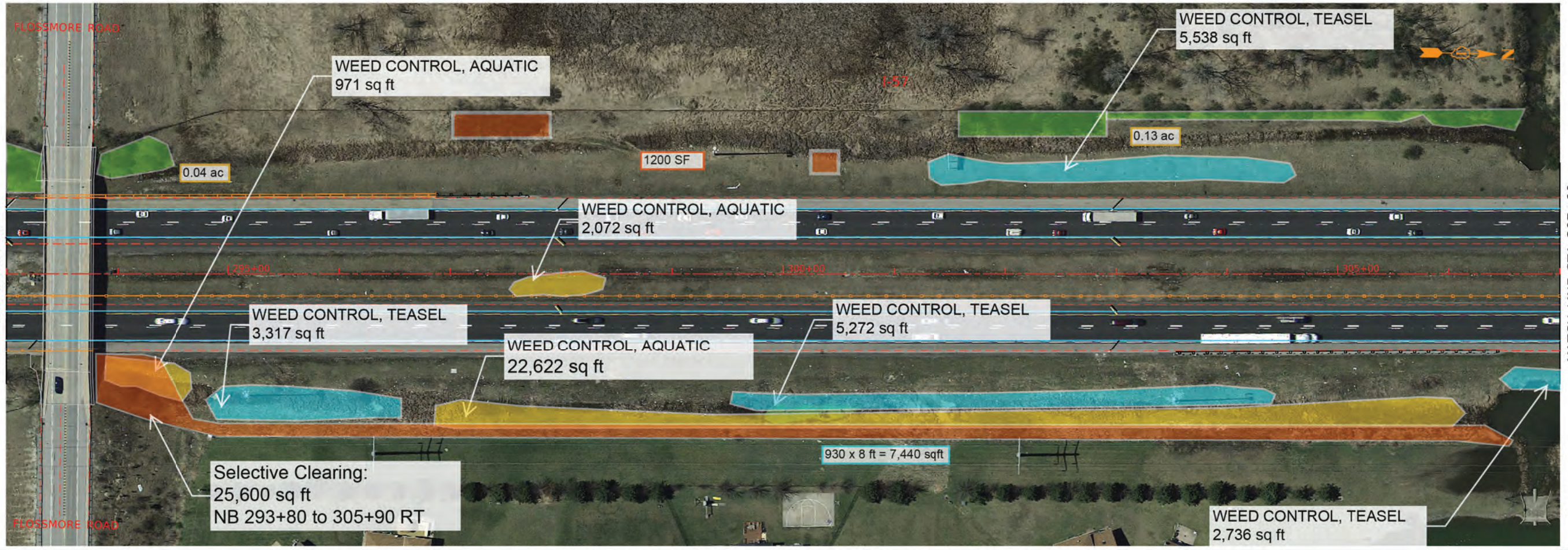
**STATE OF ILLINOIS  
DEPARTMENT OF TRANSPORTATION**

**LANDSCAPING PLANS  
I-57 SMART OVERLAY: WILL COUNTY LINE TO US 6**

SCALE: SHEET OF SHEETS STA. TO STA.

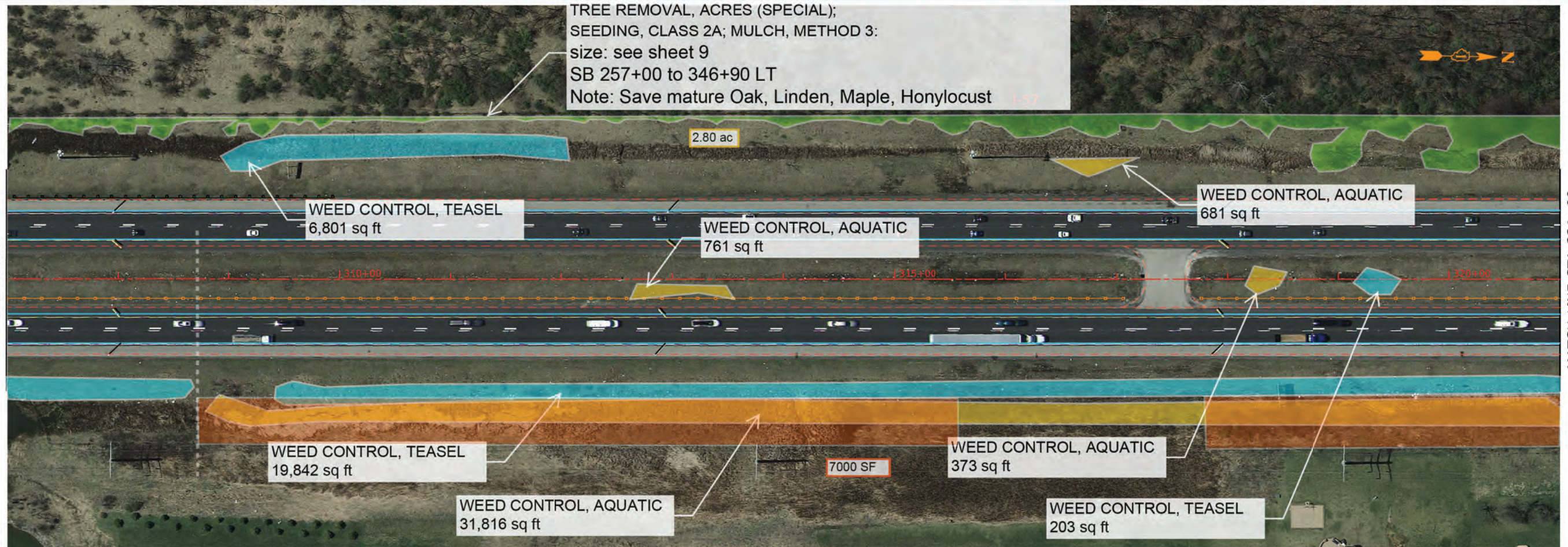
|                                     |             |        |                    |           |
|-------------------------------------|-------------|--------|--------------------|-----------|
| F.A.I. RTE.                         | SECTION     | COUNTY | TOTAL SHEETS       | SHEET NO. |
| 57                                  | 2021-003-R5 | COOK   | 125                | 60        |
| ILLINOIS FED. AID PROJECT RBV9(665) |             |        | CONTRACT NO. 62N36 |           |





MATCH LINE STA 293+00  
SEE SHEET 60

MATCH LINE STA 307+00  
SEE BELOW



MATCH LINE STA 307+00  
SEE ABOVE

MATCH LINE STA 321+00  
SEE SHEET 62

|                          |                   |           |                |
|--------------------------|-------------------|-----------|----------------|
| USER NAME = jdvalls      | DESIGNED -        | REVISED - | 07-24-2023 JJD |
|                          | DRAWN -           | REVISED - |                |
| PLOT SCALE = 1,000' / 1" | CHECKED -         | REVISED - |                |
| PLOT DATE = 7/24/2023    | DATE - 05-12-2023 | REVISED - |                |

**STATE OF ILLINOIS  
DEPARTMENT OF TRANSPORTATION**

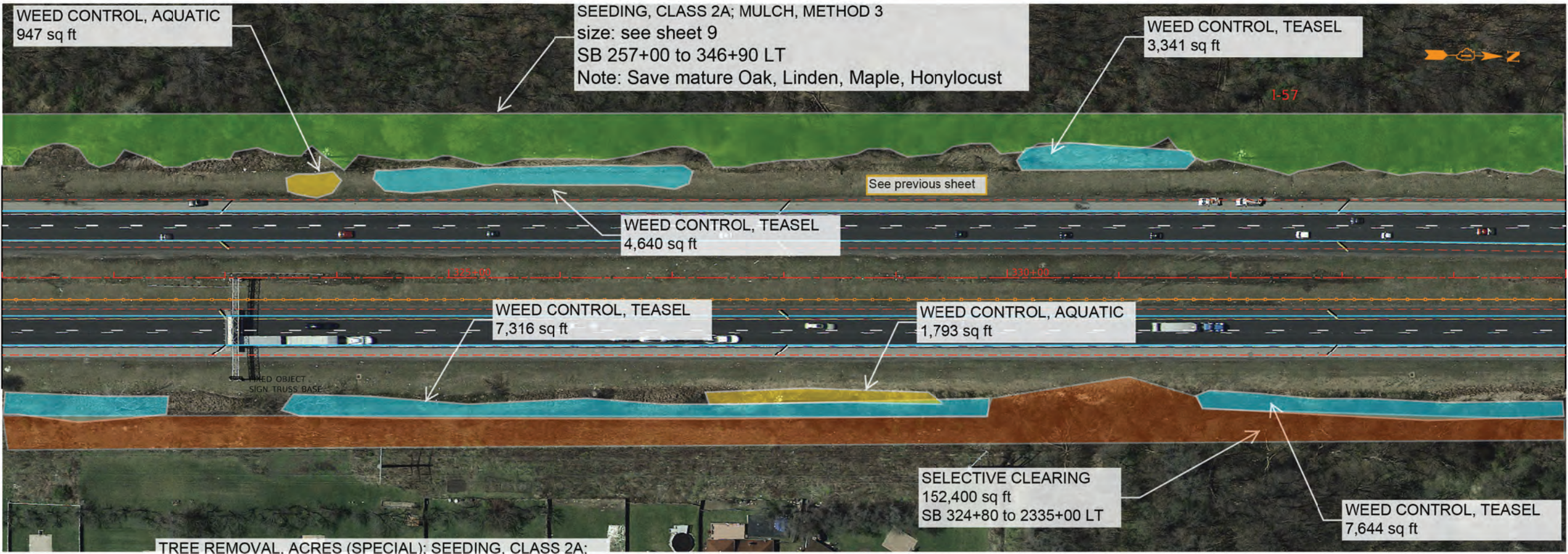
**LANDSCAPING PLANS  
I-57 SMART OVERLAY: WILL COUNTY LINE TO US 6**

SCALE: SHEET OF SHEETS STA. TO STA.

|                    |             |        |                                     |           |
|--------------------|-------------|--------|-------------------------------------|-----------|
| F.A.I. RTE.        | SECTION     | COUNTY | TOTAL SHEETS                        | SHEET NO. |
| 57                 | 2021-003-R5 | COOK   | 125                                 | 61        |
| CONTRACT NO. 62N36 |             |        | ILLINOIS FED. AID PROJECT RBV9(665) |           |

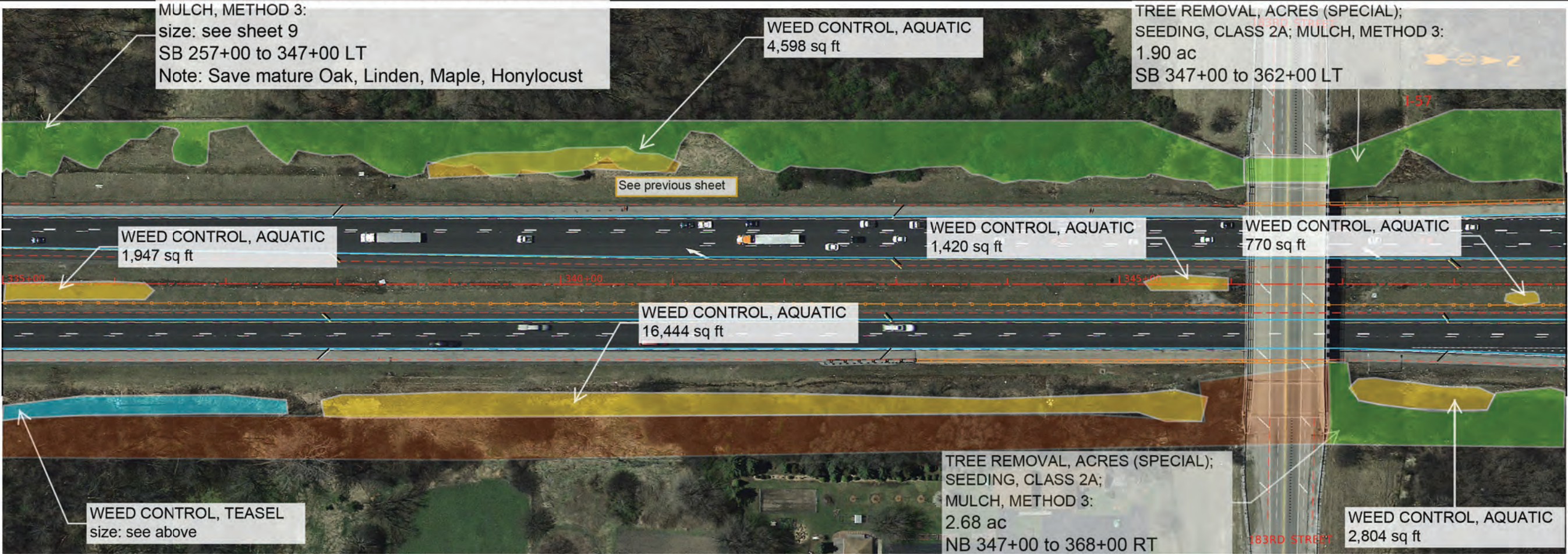
I:\Projects\62N36\62N36-CADD\CADD\_Sheets\City\ID\267676-62N36-62N36-11.dgn  
 FILE NAME: C:\Users\jdvalls\OneDrive\Documents\62N36-CADD\CADD\_Sheets\City\ID\267676-62N36-62N36-11.dgn





MATCH LINE STA 321+00  
SEE SHEET 61

MATCH LINE STA 335+00  
SEE BELOW



MATCH LINE STA 335+00  
SEE ABOVE

MATCH LINE STA 349+00  
SEE SHEET 63

|                           |                   |                          |
|---------------------------|-------------------|--------------------------|
| USER NAME = jdavls        | DESIGNED -        | REVISED - 07-24-2023 JJD |
|                           | DRAWN -           | REVISED -                |
| PLOT SCALE = 1,000' / In. | CHECKED -         | REVISED -                |
| PLOT DATE = 7/24/2023     | DATE - 05-12-2023 | REVISED -                |

STATE OF ILLINOIS  
DEPARTMENT OF TRANSPORTATION

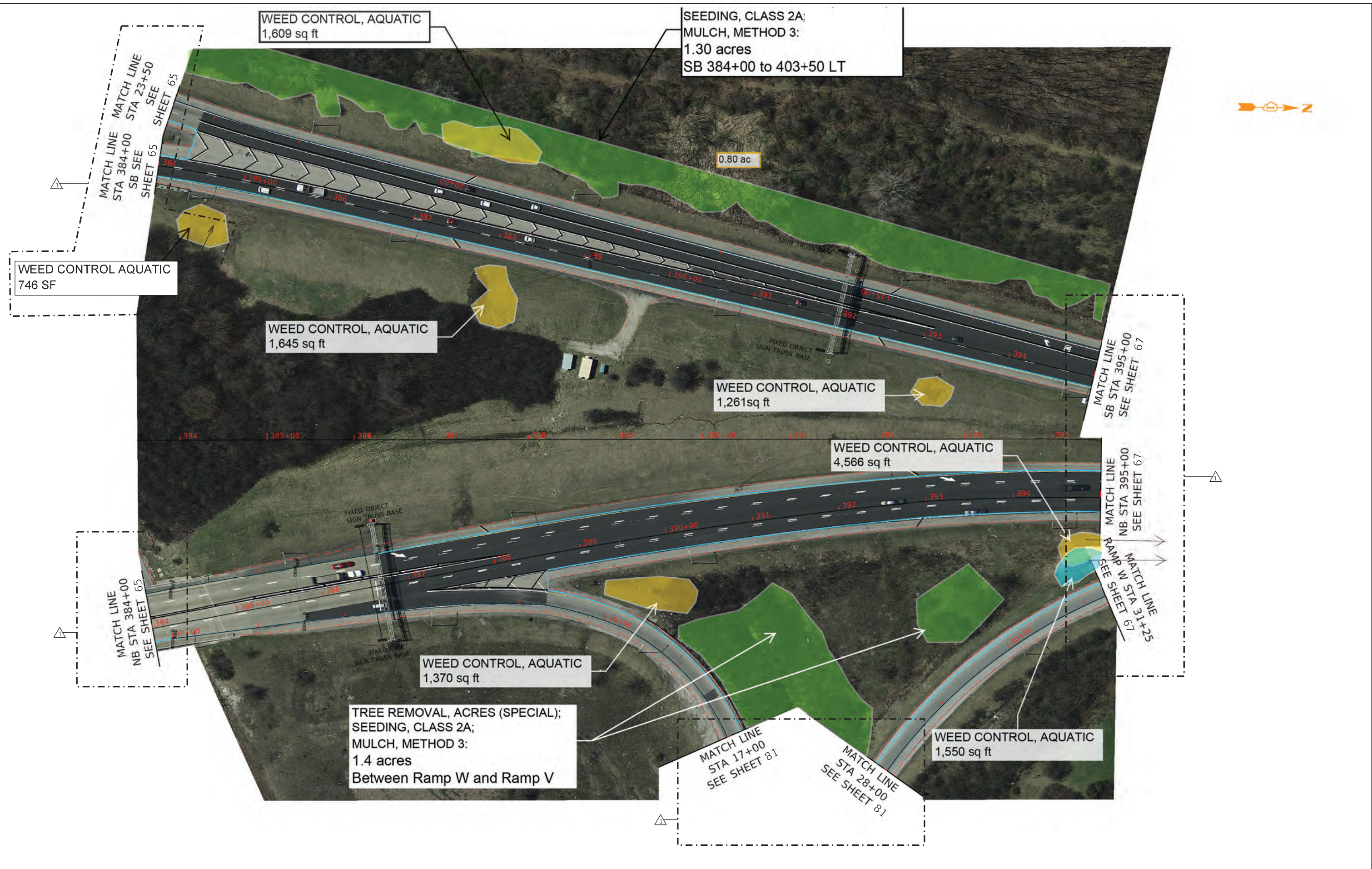
LANDSCAPING PLANS  
I-57 SMART OVERLAY: WILL COUNTY LINE TO US 6

|                                     |             |        |              |           |
|-------------------------------------|-------------|--------|--------------|-----------|
| F.A.I. RTE.                         | SECTION     | COUNTY | TOTAL SHEETS | SHEET NO. |
| 57                                  | 2021-003-R5 | COOK   | 125          | 62        |
| CONTRACT NO. 62N36                  |             |        |              |           |
| ILLINOIS FED. AID PROJECT RBV9(665) |             |        |              |           |

I:\Projects\62N36\62N36\_CADD\CADD\_Sheets\City\ID1267676-62N36-62N36-12.dgn  
 FILE: \\nrc\cadd\62N36\62N36\_CADD\CADD\_Sheets\City\ID1267676-62N36-62N36-12.dgn



MODEL: D:\m\11...  
 FILE: N:\m\11...  
 C:\Users\jldavis\OneDrive\Documents\Projects\62N36\CADD\CADD\_Sheets\Civil\ID\123787654321\62N36-11-Landscaping-16.dgn



|                          |                   |           |                |
|--------------------------|-------------------|-----------|----------------|
| USER NAME = jldavis      | DESIGNED -        | REVISED - | 07-24-2023 JJD |
|                          | DRAWN -           | REVISED - |                |
| PLOT SCALE = 1,000' / 1" | CHECKED -         | REVISED - |                |
| PLOT DATE = 7/24/2023    | DATE - 05-12-2023 | REVISED - |                |

**STATE OF ILLINOIS  
 DEPARTMENT OF TRANSPORTATION**

**LANDSCAPING PLANS  
 I-57 SMART OVERLAY: WILL COUNTY LINE TO US 6**

|                                     |             |        |              |           |
|-------------------------------------|-------------|--------|--------------|-----------|
| F.A.I. RTE.                         | SECTION     | COUNTY | TOTAL SHEETS | SHEET NO. |
| 57                                  | 2021-003-R5 | COOK   | 125          | 66        |
| CONTRACT NO. 62N36                  |             |        |              |           |
| ILLINOIS FED. AID PROJECT RBV9(665) |             |        |              |           |

SCALE: SHEET OF SHEETS STA. TO STA.



TREE REMOVAL, ACRES (SPECIAL);  
SEEDING, CLASS 2A;  
MULCH, METHOD 3::  
Acres: see sheet 20  
SB 483+40 to 537+00 LT

see previous page for ac

WEED CONTROL AQUATIC  
71 SF  
Purple Loosestrife

WEED CONTROL, AQUATIC  
246 sq ft  
Purple Loosestrife

WEED CONTROL AQUATIC  
71 SF  
Purple Loosestrife

see previous page for ac

TREE REMOVAL, ACRES (SPECIAL);  
SEEDING, CLASS 2A;  
MULCH, METHOD 3:: .43 acres  
NB 517+00 to 539+00 LT

MATCH LINE STA 526+00  
SEE SHEET 71

MATCH LINE STA 539+00  
SEE BELOW

MATCH LINE J-J  
SEE SHEET 87

WEED CONTROL, TEASEL  
271 sq ft

MATCH LINE K-K  
SEE SHEET 87

MATCH LINE STA 539+00  
SEE ABOVE

MATCH LINE M-M  
SEE SHEET 88

MATCH LINE N-N  
SEE SHEET 88

MOOREL D:\dell\illinois\GIS\Projects\30005\_IDOT\_DUR\WO\_10\_62N36\CADD\CADD\_Sheets\Civil\ID162N36\sh-ll-ndscsp-22.dgn

|                           |                   |           |                |
|---------------------------|-------------------|-----------|----------------|
| USER NAME = jdavls        | DESIGNED -        | REVISED - | 07-24-2023 JJD |
| PLOT SCALE = 1,000' / In. | DRAWN -           | REVISED - |                |
| PLOT DATE = 7/24/2023     | CHECKED -         | REVISED - |                |
|                           | DATE - 05-12-2023 | REVISED - |                |

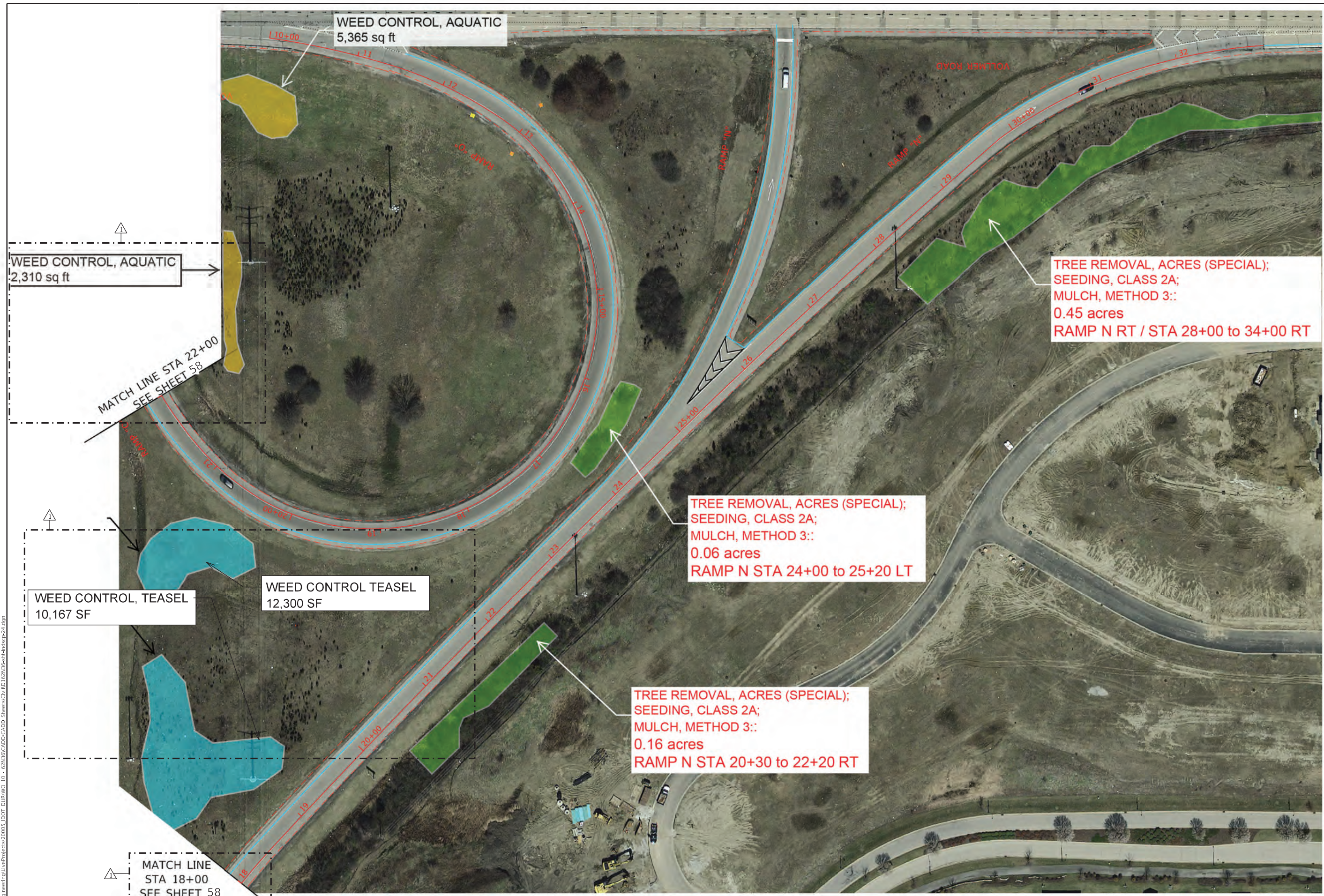
STATE OF ILLINOIS  
DEPARTMENT OF TRANSPORTATION

LANDSCAPING PLANS  
I-57 SMART OVERLAY: WILL COUNTY LINE TO US 6

|                                     |             |        |              |           |
|-------------------------------------|-------------|--------|--------------|-----------|
| F.A.I. RTE.                         | SECTION     | COUNTY | TOTAL SHEETS | SHEET NO. |
| 57                                  | 2021-003-R5 | COOK   | 125          | 72        |
| CONTRACT NO. 62N36                  |             |        |              |           |
| ILLINOIS FED. AID PROJECT RBV9(665) |             |        |              |           |

SCALE: SHEET OF SHEETS STA. TO STA.





MODEL Default  
 FILE Name: C:\Engineering\I-57\Projects\30005\_IDOT\_DWR\10\_62N36\CADD\CADD\_Sheets\CitID\1027676-11-11-23-24.dgn

|                          |                   |           |                |
|--------------------------|-------------------|-----------|----------------|
| USER NAME = jldavis      | DESIGNED -        | REVISED - | 07-24-2023 JJD |
| PLOT SCALE = 1,000' / 1" | DRAWN -           | REVISED - |                |
| PLOT DATE = 7/24/2023    | CHECKED -         | REVISED - |                |
|                          | DATE - 05-12-2023 | REVISED - |                |

**STATE OF ILLINOIS**  
**DEPARTMENT OF TRANSPORTATION**

**LANDSCAPING PLANS**  
**I-57 SMART OVERLAY: WILL COUNTY LINE TO US 6**

|                                       |             |        |              |           |
|---------------------------------------|-------------|--------|--------------|-----------|
| F.A.I. RTE.                           | SECTION     | COUNTY | TOTAL SHEETS | SHEET NO. |
| 57                                    | 2021-003-R5 | COOK   | 125          | 74        |
| CONTRACT NO. 62N36                    |             |        |              |           |
| ILLINOIS   FED. AID PROJECT RBV9(665) |             |        |              |           |

SCALE: SHEET OF SHEETS STA. TO STA.