

W. J. Sheppard Co.

INDEX OF SHEETS

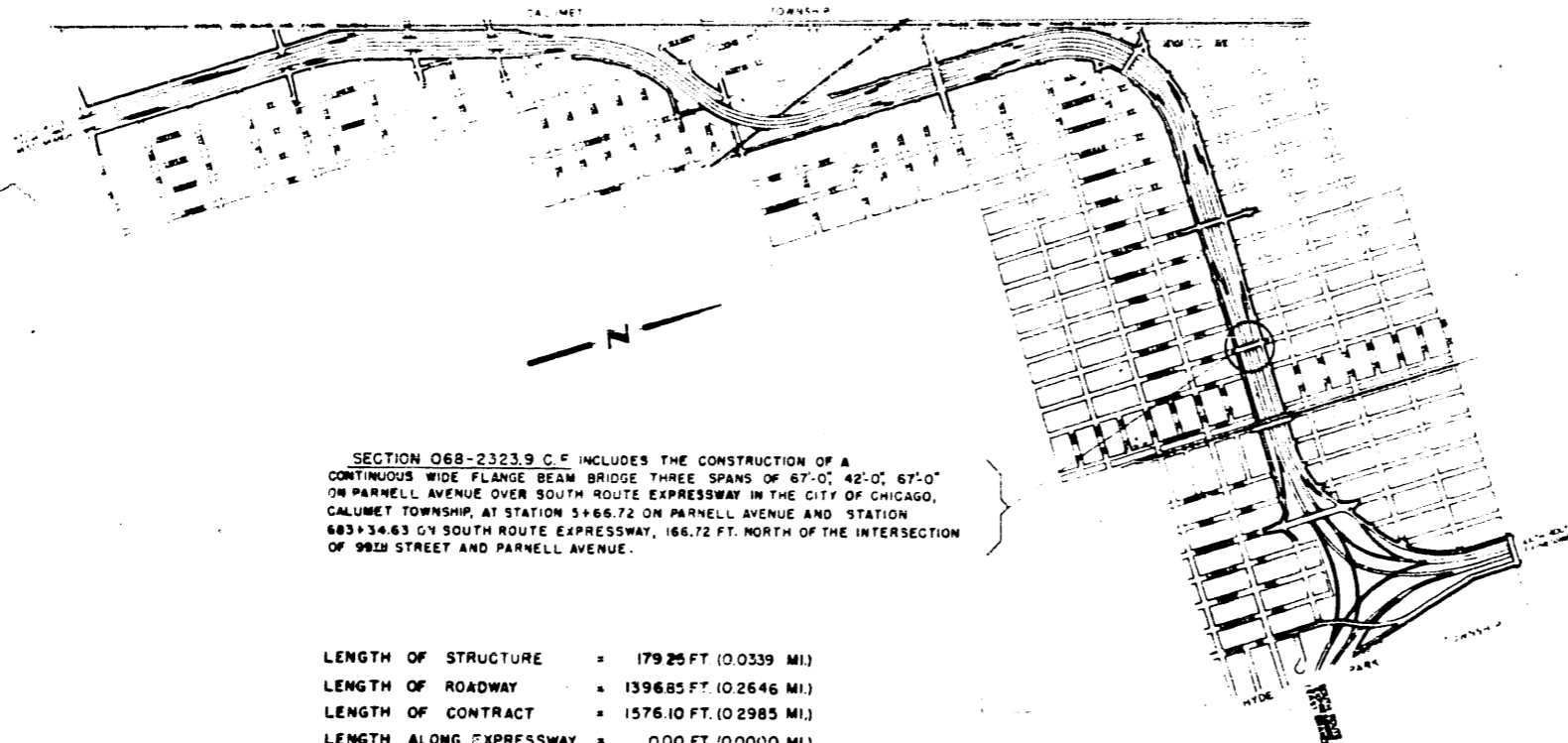
SHEET NO

- 1 TITLE PAGE
- 2 PLAN & PROFILE
- 3 GENERAL PLAN
- 4 SUPERSTRUCTURE CONCRETE DETAILS
- 5 STRUCTURAL STEEL DETAILS
- 6 BEARING DETAILS
- 7 HANDRAIL
- 8 HANDRAIL DETAILS
- 9 ABUTMENT DETAILS
- 10 FOOTING DETAILS
- 11a DETAILS-PIER 1
- 11b DETAILS-PIER 2
- 12 SOUTH RETAINING WALLS & SIDEWALKS
- 13 NORTH RETAINING WALLS & SIDEWALKS
- 14 EXCAVATION & DRAINAGE
- 15 APPROACH SLABS, FAI PROJECT SIGN
- 16 NAME PLATES; EXPANSION & CONSTRUCTION JOINTS
- 17 FIELD OFFICE & LABORATORY
- 18 TYPICAL CROSS SECTIONS PARNELL AVENUE
- 19 DETAILS OF STANDARD BARRICADE
- 20 BILL OF MATERIAL (PAVING)
- 21 PLAN & PROFILE PARNELL AVENUE
- 22 EXCAVATION UNDER STRUCTURE
- 23 STAGES OF CONSTRUCTION
- 24 PAVING DETAILS
- 25 CROSS SECTIONS-PARNELL AVENUE
- 26 CROSS SECTIONS-SOUTH ROUTE EXPRESSWAY
- 27 ALIGNMENT & TIES
- 28 LONGITUDINAL METAL JOINT
- 29 WOOD GUARD FENCE
- 30 DETAILS OF CURBS & GUTTERS
- 31 STANDARD SECTION MARKER
- 32 DETAILS OF P.C. SIDEWALK CONSTRUCTION
- 33 LANDSCAPING
- 34 DRAINAGE
- 35 STORM SEWER CONNECTION
- 36 TYPE A2 CATCH BASIN
- 37 LATERAL SEWER CONNECTION
- 38 CURB & GUTTER, FRAME & GRATE, TYPE 31
- 39 CURB & GUTTER, FRAME & GRATE, TYPE 34
- 40 TYPE NO 1 FRAME
- 41 TYPE NO 5 FRAME FOR STRUCTURES
- 42 TYPE 'A' MANHOLE
- 43 STEEL PLATE BEAM GUARD RAIL
- 44 ELECTRICAL PLAN

STATE OF ILLINOIS
COUNTY OF COOK
DEPARTMENT OF HIGHWAYS

PLANS FOR PROPOSED
FEDERAL AID HIGHWAY

F. A. INTERSTATE ROUTE 57-PROJECT EBI-57-7(38)-358
PARNELL AVENUE GRADE SEPARATION
OVER
SOUTH ROUTE EXPRESSWAY
SECTION 068-2323.9-C.F.



SECTION 068-2323.9 C.F. INCLUDES THE CONSTRUCTION OF A CONTINUOUS WIDE FLANGE BEAM BRIDGE THREE SPANS OF 67'-0", 42'-0", 67'-0" ON PARNELL AVENUE OVER SOUTH ROUTE EXPRESSWAY IN THE CITY OF CHICAGO, CALUMET TOWNSHIP, AT STATION 3+66.72 ON PARNELL AVENUE AND STATION 683+34.63 ON SOUTH ROUTE EXPRESSWAY, 166.72 FT. NORTH OF THE INTERSECTION OF 99TH STREET AND PARNELL AVENUE.

LENGTH OF STRUCTURE = 179.25 FT. (0.0339 MI.)
LENGTH OF ROADWAY = 1396.85 FT. (0.2646 MI.)
LENGTH OF CONTRACT = 1576.10 FT. (0.2985 MI.)
LENGTH ALONG EXPRESSWAY = 0.00 FT. (0.0000 MI.)

SUMMARY OF QUANTITIES

QUANTITY	UNIT	ITEM
14245	CU. YDS	CLASS 'A' CONCRETE
16487	LBS	REINFORCEMENT BARS
381900	LBS	FURNISHING AND ERECTING STRUCTURAL STEEL
380	LIN. FT.	HANDRAIL
390	LIN. FT.	CORRUGATED METAL PIPE-6 IN DIA
2	EACH	NAME PLATES
1,328	CU. YDS	CLASS 'A' EXCAVATION FOR STRUCTURES
2,165	CU. YDS	CLASS 'A' EXCAVATION FOR STRUCTURES (MODIFIED)
333	CU. YDS	POROUS GRANULAR EMBANKMENT
230	TONS	SAND OR GRAVEL EMBANKMENT
1,930	TONS	STABILIZED SAND EMBANKMENT
60,968	CU. YDS	SPECIAL EXCAVATION
3,150	SQ. YDS	PORTLAND CEMENT CONCRETE BASE COURSE (19 IN)
426	GALS	BITUMINOUS MATERIALS (PRIME COAT)
7	TONS	AGGREGATE (PRIME COAT)
312	TONS	BITUMINOUS CONCRETE BINDER COURSE
228	TONS	BITUMINOUS CONCRETE SURFACE COURSE, FINE SENSE GRADED
852	TONS	AGGREGATE TYPE, SUBCLASS I-II
1494	LIN. FT.	SUB-BASE-GRANULAR MATERIAL, TYPE 'A'
188	SQ. FT.	COMBINATION CONCRETE CURB & GUTTER (TYPE 3)
6,902	SQ. FT.	LONGITUDINAL CURB EXPANSION JOINT
197	SQ. YDS	PORTLAND CEMENT CONCRETE SIDEWALK (5 IN); P.C. CONCRETE PAVEMENT (16 1/2"-10 1/2"-16 1/2")
2	EACH	SECTION MARKERS
4 5	M FT B M	MISCELLANEOUS TIMBER
4 16	IN. DIA	TREE REMOVAL (OVER 15 IN DIA)
52	IN. DIA	TREE REMOVAL (6 IN TO 15 IN DIA)
50	LIN. FT	STEEL PLATE BEAM GUARD RAIL
5	EACH	MANHOLES, TYPE A, 4 FT DIA WITH TYPE 5 FRAME, CLOSED LID
5	EACH	MANHOLES, TYPE A, 4 FT DIA WITH TYPE 1 FRAME, CLOSED LID
2	EACH	CATCH BASINS, TYPE A2, 4 FT DIA WITH TYPE 34 FRAME AND GRATE
4	EACH	CATCH BASINS, TYPE A2, 4 FT DIA WITH TYPE 31 FRAME AND GRATE
13	EACH	CATCH BASINS, TYPE A2, 4 FT DIA WITH TYPE 5 OPEN LID
974	LIN. FT.	STORM SEWERS, TYPE 2, (R.C.P. CLASS III) 30 IN
6	LIN. FT.	STORM SEWERS, TYPE 2, (R.C.P. CLASS III) 24 IN
74	LIN. FT.	STORM SEWERS, TYPE 2, (A.S.T.M. C200-57 T) 18 IN
4	LIN. FT.	STORM SEWERS, TYPE 2, (A.S.T.M. C200-57 T) 15 IN
38	LIN. FT.	STORM SEWERS, TYPE 2, (A.S.T.M. C200-57 T) 12 IN
266	LIN. FT.	STORM SEWERS, TYPE 2, (A.S.T.M. C200-57 T) 8 IN
154	LIN. FT.	STORM SEWERS, TYPE 2, (R.C.P. CLASS III) 12 IN
2	EACH	FRAME AND GRATE, TYPE 5, CLOSED LID
2	EACH	FRAME AND GRATE, TYPE 5, OPEN LID
4	EACH	MANHOLES TO BE ADJUSTED
1	EACH	FILLING EXISTING INLETS
6	EACH	FILLING EXISTING CATCH BASINS
1	EACH	FILLING EXISTING MANHOLES
325	CU. YDS	TRENCH BACKFILL
22	SQ. YDS	PAVEMENT REPLACEMENT-ENTIRE
4	EACH	PLUGGING EXISTING DRAINS AND SEWERS (12 IN OR LESS)
4	EACH	PLUGGING EXISTING DRAINS AND SEWERS (12 IN OR OVER)
4	EACH	HAND HOLES, 8 OFE DWG 1143
4	EACH	SIDEWALK JUNCTION BOX
1	EACH	FOUNDATION FOR CONTROLLER CABINET (8 OFE DWG NO 11880)
10	LIN. FT.	1-3/4 IN ASBESTOS CEMENT CONDUIT (ENCASED IN CONCRETE)
229	LIN. FT.	2-3/4 IN ASBESTOS CEMENT CONDUIT (ENCASED IN CONCRETE)
210	LIN. FT.	4-3/4 IN ASBESTOS CEMENT CONDUIT (ENCASED IN CONCRETE)
596	LIN. FT.	3/4 IN ASBESTOS CEMENT CONDUIT
348	LIN. FT.	2 IN RIGID STEEL CONDUIT
158	LIN. FT.	2 1/2 IN RIGID STEEL CONDUIT
10	LIN. FT.	3 IN RIGID STEEL CONDUIT
135	CU. YDS	TOP SOIL
0.4	ACRES	COMPLETE SEEDING
7	EACH	CELTIS OCCIDENTALIS (3'-3 1/2" B B)

PLAN 1" = 100 FT
PROFILE HOR 1" = 10 FT
PROFILE VERT 1" = 5 FT
CROSS SECTIONS 1" = 10 FT
CROSS SECTIONS 1" = 10 FT HOR

COUNTY OF COOK
DEPARTMENT OF HIGHWAYS

APPROVED: *Feb 7 1961*
M.F. Papp
CHIEF ENGINEER

APPROVED: *Feb 7 1961*
Superintendent
SUPERINTENDENT

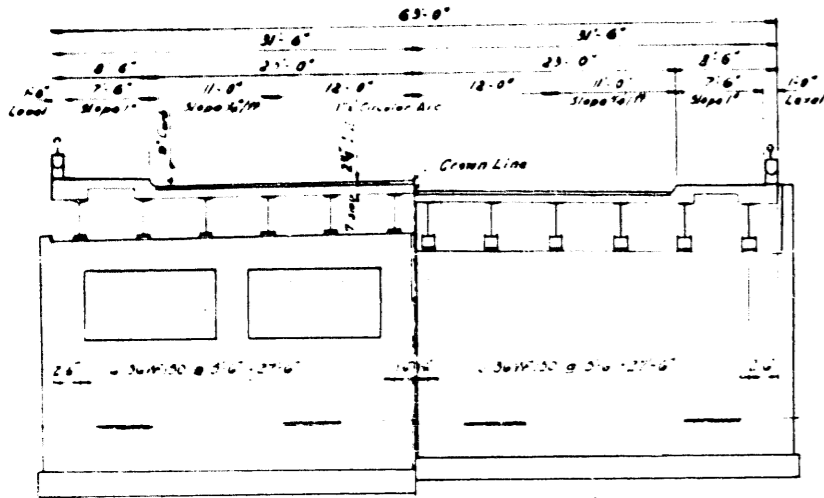
STATE OF ILLINOIS
DEPARTMENT OF PUBLIC WORKS AND BUILDINGS
DIVISION OF HIGHWAYS

APPROVED: _____
DIRECTOR

DEPARTMENT OF COMMERCE
BUREAU OF PUBLIC ROADS

APPROVED: _____
DATE

County	Project	Sheet	Total
068	1961	1	34

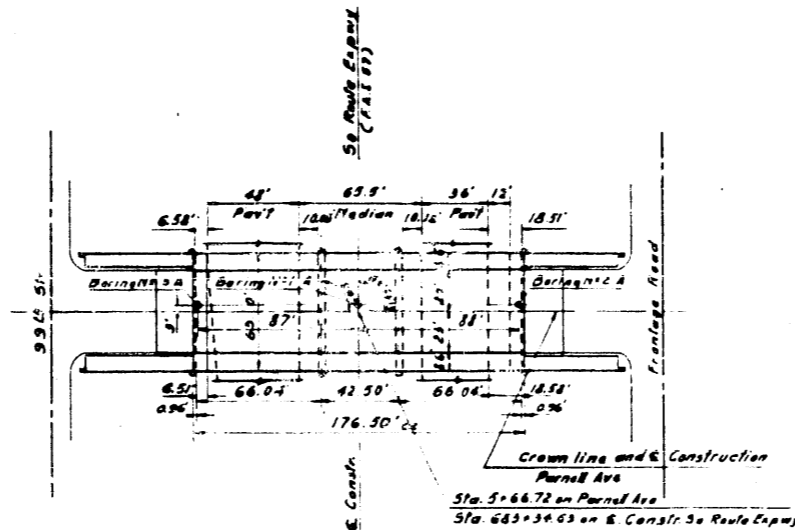


HALF SECTION
AT PIER

HALF SECTION
AT ABUTMENT

Scale: 1/4" = 1'-0"

City of Chicago
Population 3,330,404
Calumet Township
Sec. 9-T37N-R14E

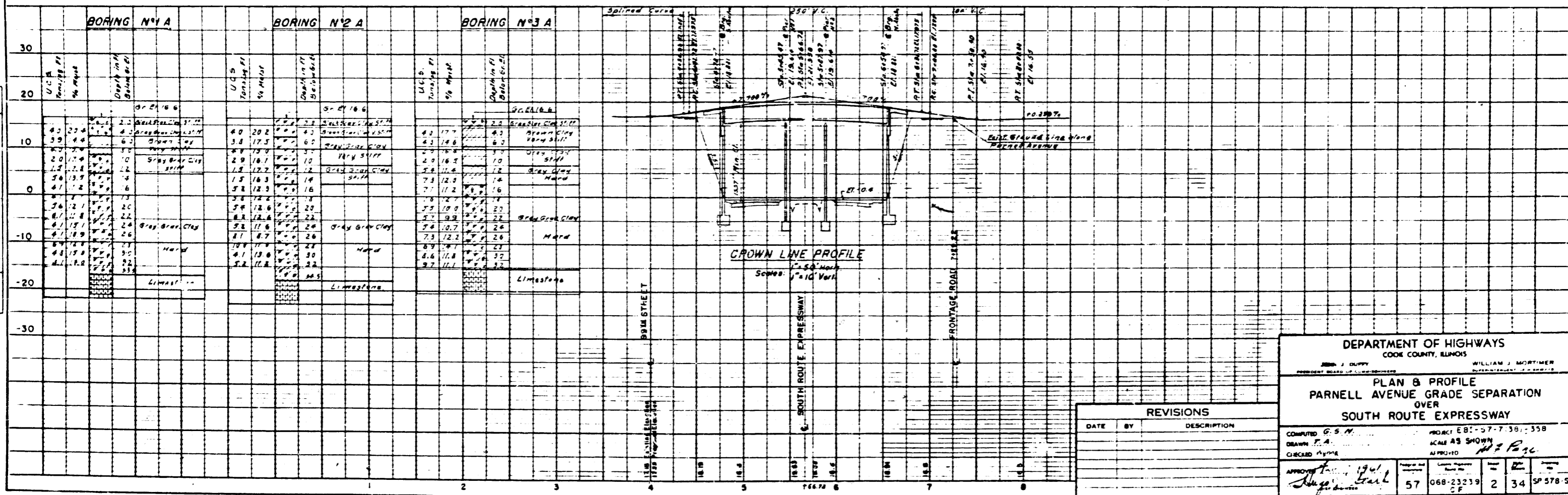


PLAN
Scale: 1/4" = 50'

Quench Mark T.S.R. 4A
1000 Street & So. Emerald Ave
5g cut on concrete walk N.E. Corner
3.98' W. of E. Line & 3.60' S. of N. Line
C.C.M.D. Elev. 29.947

Note:
For Alignment and Ties See Sheet N126

Design Speed: 35 mph.
Traffic Classification 200 P



REVISIONS		
DATE	BY	DESCRIPTION

DEPARTMENT OF HIGHWAYS
COOKE COUNTY, ILLINOIS

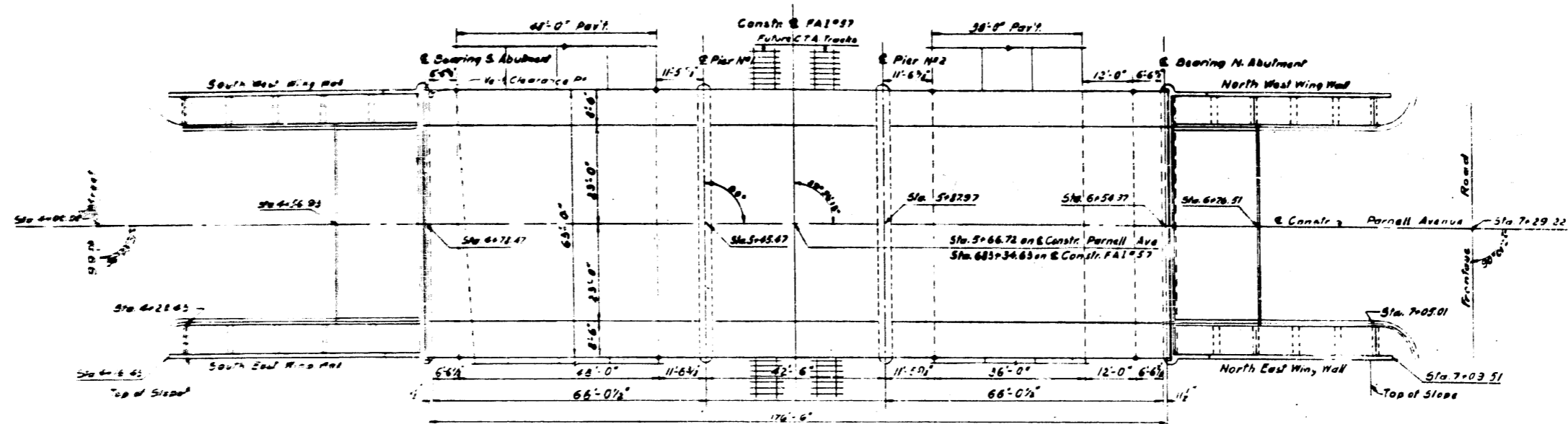
PLAN & PROFILE
PARNELL AVENUE GRADE SEPARATION
OVER
SOUTH ROUTE EXPRESSWAY

COMPUTED: G.S.M.
DRAWN: P.A.
CHECKED: M.P.M.

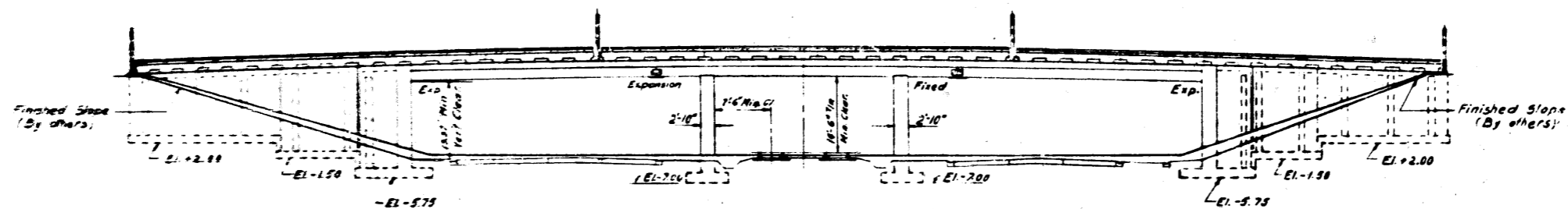
PROJECT: EB-57-7-38-358
SCALE: AS SHOWN
APPROVED: *M.P.M.*

APPROVED: *J. J. Guffey*
DATE: 1961

57 068-23239 2 34 SP 578-5



PLAN
(Structure symmetrical about E Construction except for utilities)



ELEVATION

GENERAL NOTES

Class "X" concrete shall be used wherever cast in place concrete is required in non-roads which is for non-roads. Exposed surfaces of concrete are to be treated with silicone. See Spec. for Paving. The cost of rubber water seal copper material and bituminous preformed floor joint filler shall be included in the contract bid price of Class "X" concrete.

The contractor shall adequately support, brace and protect the rubber water seal copper material and bituminous preformed floor joint filler during construction so that the rubber material and filler remains in place and does not become bent, torn or distorted. The contractor shall be responsible for bracing and protecting above mentioned items. This shall be approved by the Engineer.

The rubber water seal shall be spliced as recommended by the manufacturer. Copper material splices shall be soldered or brazed.

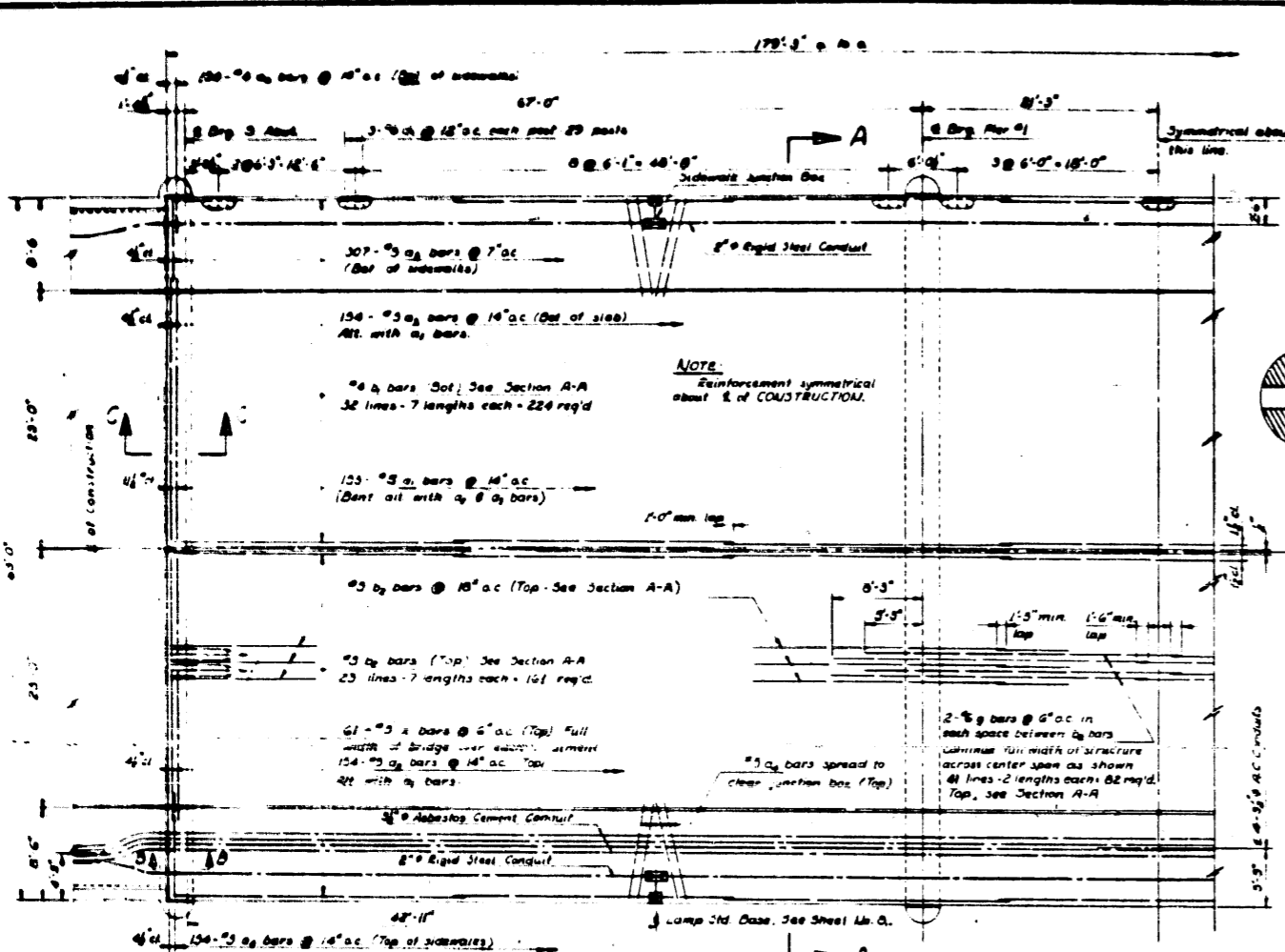
DESIGN DATA:

Live Load: AASHO H-20-50-64
Design Stresses:
Earth Pressure: 30 lb./sq. ft.
Structural Steel: 18,000 psi
Reinforcement Bars: 20,000 psi
Concrete: n=10
(without earth pressure) 1400 psi
(with earth pressure) 800 psi

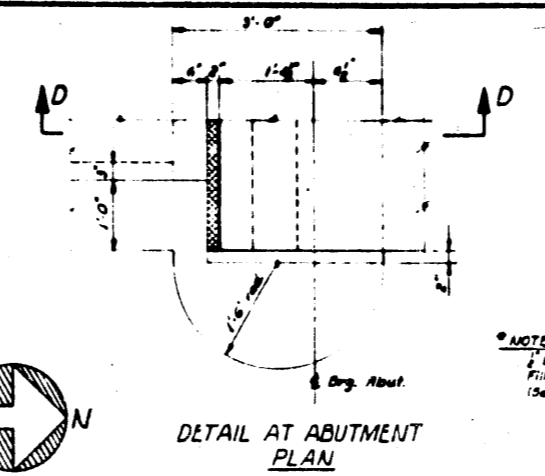
Allowable Soil Pressure: 3000 psf

DEPARTMENT OF HIGHWAYS COOK COUNTY, ILLINOIS	
J. B. WYNN PRESIDENT BOARD OF COMMISSIONERS	WILLIAM J. MORTIMER STATE REPRESENTATIVE OF HIGHWAYS
GENERAL PLAN PARNELL AVENUE GRADE SEPARATION OVER SOUTH ROUTE EXPRESSWAY	
COMPUTED: C. S. M. DRAWN: T. A. CHECKED: Wynne	PROJECT: EBI-57-7(38)-328 SCALE: 1/4"=1'-0" APPROVED: [Signature]
APPROVED: [Signature] Feb 7 1961 [Signature]	County Highway: 57 068-23239 CF
Sheet No.: 3	Total Sheets: 34 Project No.: SR 579-S

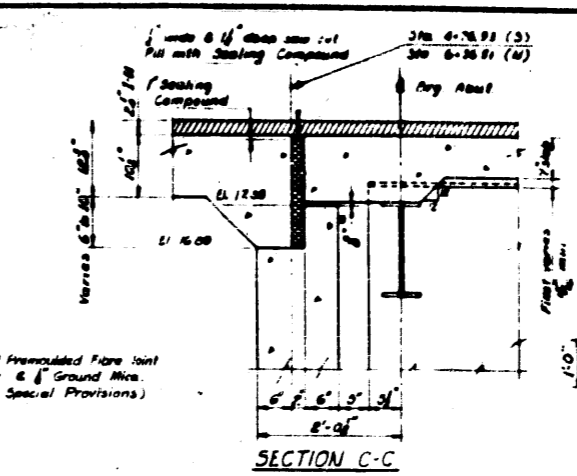
REVISIONS		
DATE	BY	DESCRIPTION



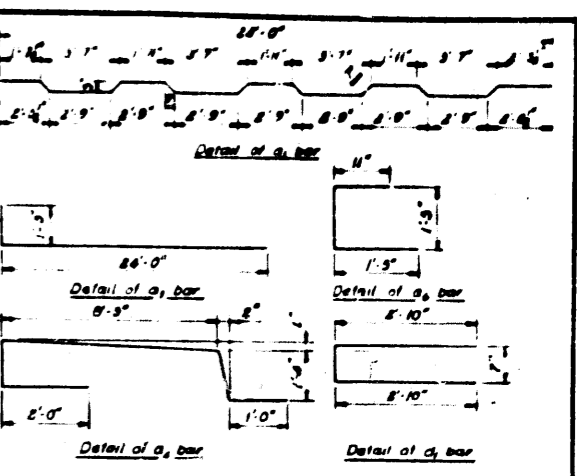
HALF PLAN
Scale: 1/4" = 1'-0"



DETAIL AT ABUTMENT PLAN

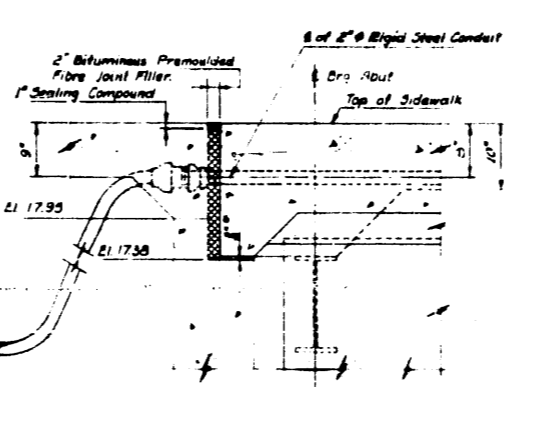


SECTION C-C

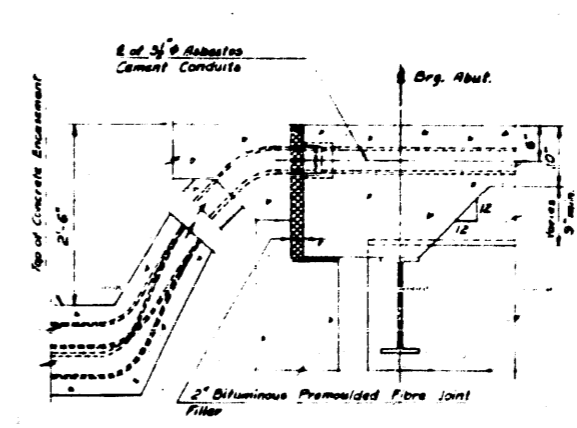


BAR SCHEDULE

MARK	NO	SIZE	LENGTH	SKETCH
A ₁	306	#5	25'-4"	
A ₂	308	#5	24'-0"	
A ₃	308	#5	25'-3"	
A ₄	308	#5	15'-7"	
A ₅	614	#5	5'-0"	
A ₆	308	#6	5'-9"	
B ₁	443	#6	26'-5"	
B ₂	322	#5	26'-0"	
C ₁	174	#6	2'-5"	
G	164	#6	28'-9"	
X	244	#5	4'-5"	

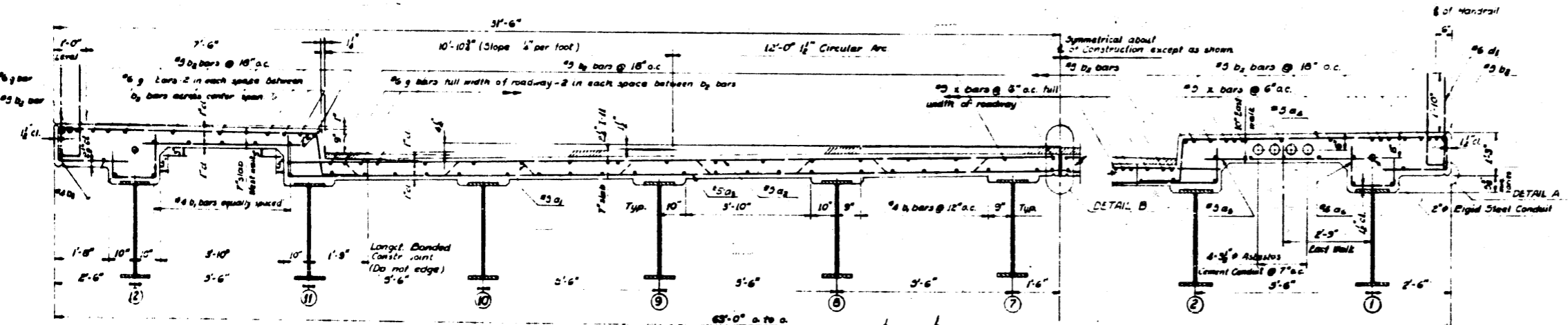


SECTION D-D



SECTION B-B

Scale: 1/4" = 1'-0"



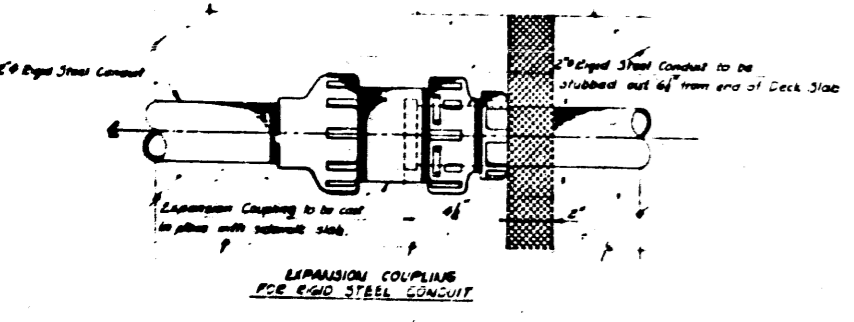
SECTION A-A
Scale: 1/4" = 1'-0"

BILL OF MATERIAL

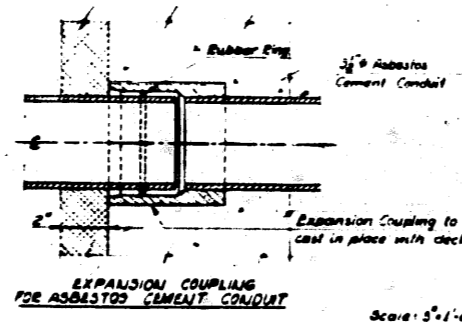
Class "X" Concrete	3310 Cu Yds
Reinforcement Bars	38,927 Lbs
Bituminous Material (Prima Coat)	81 Sals
Bituminous Concrete Binder Course	67 Tons
Bituminous Concrete Surface Course, Fine Dense graded Aggregate Type Sub Class 1-11	49 Tons

*Includes Bit Prem. Fibre Jt. Filler @ Abutts.
**Between Sta 4+76.93 and Sta 6+36.21.

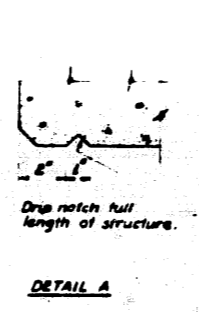
NOTES
For General Notes see Sheet No 3 -
Finishing of the Deck Slab shall comply with Article 7119 of the Standard Specifications.
For Elevations of Deck and Method of Determining Fillet Heights see Sheet No 3 -



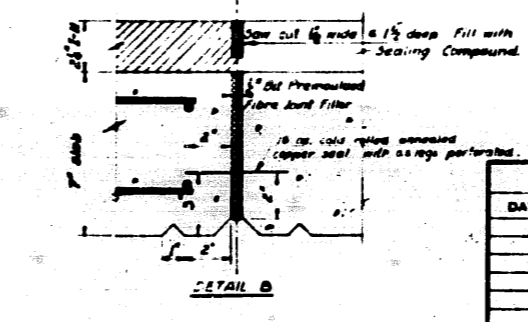
EXPANSION COUPLING FOR RIGID STEEL CONDUIT



EXPANSION COUPLING FOR ASBESTOS CEMENT CONDUIT



DETAIL A



DETAIL B

DEPARTMENT OF HIGHWAYS
COOK COUNTY, ILLINOIS

JOHN J. DUFFY
WILLIAM J. MORTIMER

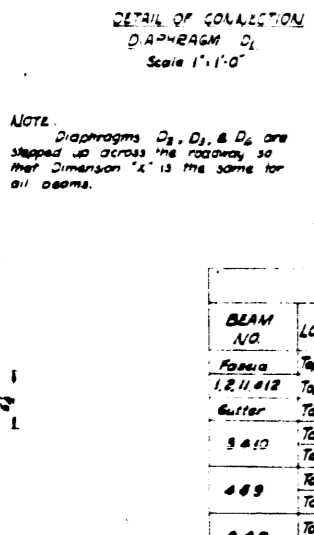
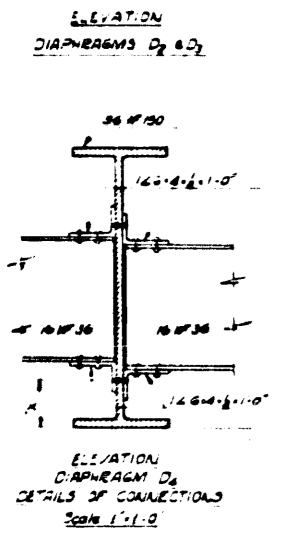
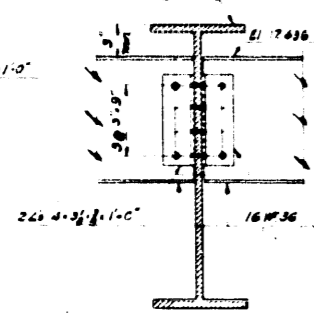
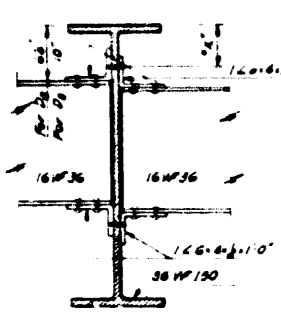
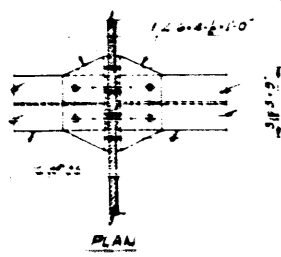
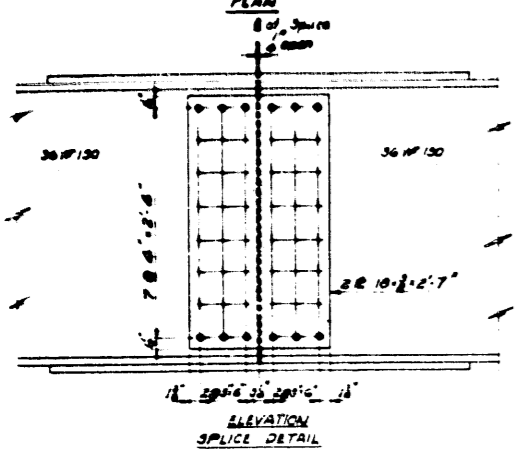
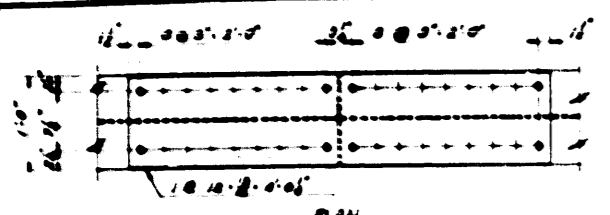
SUPERSTRUCTURE CONCRETE DETAILS
PARNELL AVENUE GRADE SEPARATION
OVER
SOUTH ROUTE EXPRESSWAY

COMPUTED BY: W.M.H.
DRAWN BY: R. Michalski
CHECKED BY: P.F.P.P.

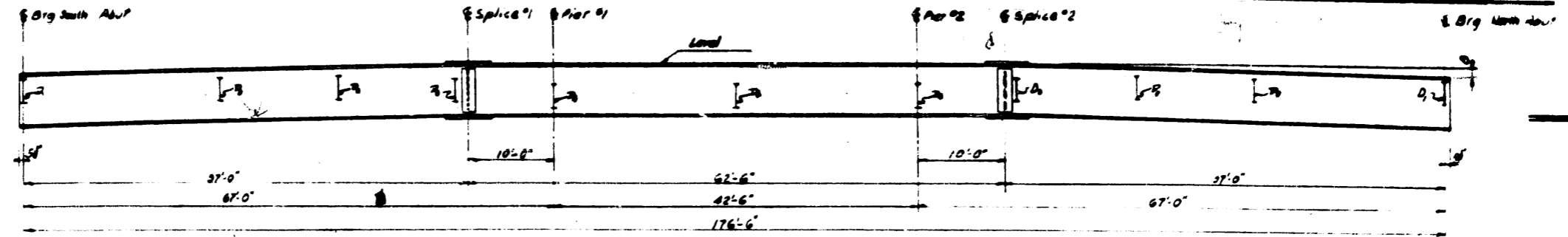
PROJECT E81-57-7(38)-358
SCALE AS SHOWN
APPROVED: [Signature]

DATE	BY	DESCRIPTION

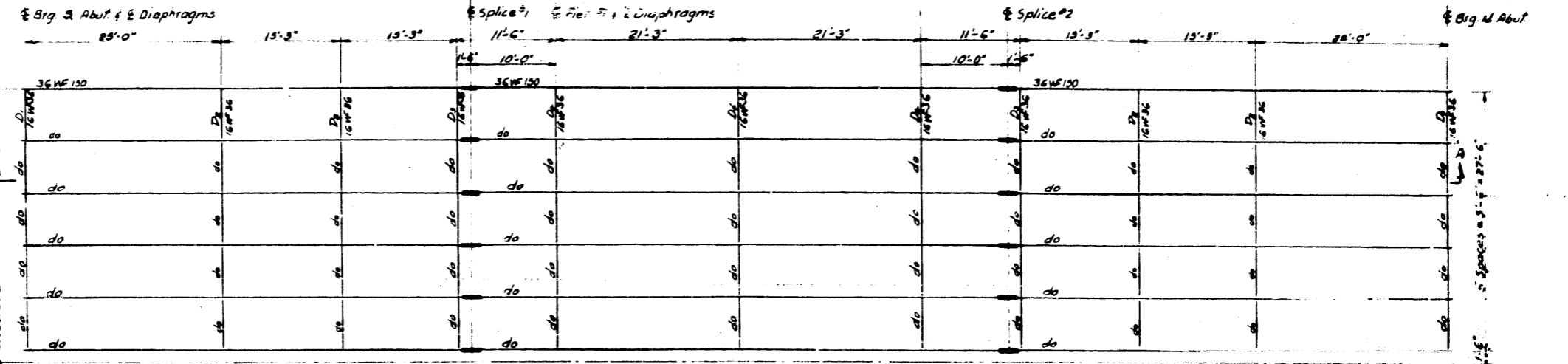
57 068-23219 CF 4 34 SR 5A0-5



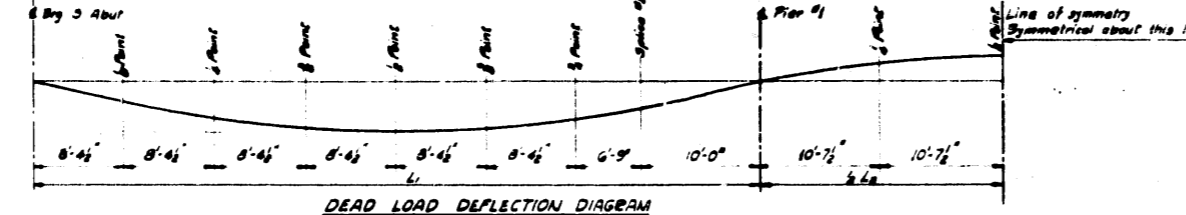
NOTE: Diaphragms D₂, D₃, & D₄ are stepped up across the roadway so that dimension "x" is the same for all beams.



SECTION A-A
Vertical Scale: 1/4"=1'-0"
Horizontal Scale: 1/4"=1'-0"



FRAMING PLAN - WEST HALF
Scale: 1/4"=1'-0"



DEAD LOAD DEFLECTION DIAGRAM

TABLE OF DEAD LOAD DEFLECTIONS (in feet) EXCLUDING STRUCTURAL STEEL

BEAMS	SPAN #1										HALF-SPAN #2	
	1/4 Point	1/2 Point	3/4 Point	1 Point	1 1/4 Point	1 1/2 Point	1 3/4 Point	2 Point	Splice #1	8 Pier #1	1/4 Point	1 Point
1 & 12	0.044	0.075	0.094	0.098	0.084	0.060	0.034	0	0.034	0	-0.019	-0.023
2 & 11	0.036	0.061	0.077	0.080	0.069	0.030	0.028	0	0.028	0	-0.015	-0.019
3, 4, 5, 8, 9, 10	0.026	0.043	0.053	0.057	0.049	0.033	0.020	0	0.020	0	-0.011	-0.014
6 & 7	0.020	0.033	0.042	0.044	0.038	0.027	0.013	0	0.013	0	-0.008	-0.010

TABLE OF ELEVATIONS*

BEAM NO.	LOCATION	8 BEAMS, 3 ABUT.	1/4 Point	1/2 Point	3/4 Point	1 Point	1 1/4 Point	1 1/2 Point	1 3/4 Point	2 Point	Splice #1	8 Pier #1	1/4 Point	1 Point
Fascia	Top of Conc.	19.303	19.455	19.592	19.713	19.820	19.912	19.988	20.038	20.093	20.132	20.144	20.132	20.144
1, 2, 11, 12	Top of WF	17.686	17.784	17.882	17.980	18.079	18.177	18.275	18.354	18.394	18.334	18.354	18.334	18.354
	Gutter	18.469	18.621	18.758	18.880	19.007	19.129	19.255	19.368	19.468	19.568	19.668	19.768	19.868
3 & 10	Top of I-H	18.571	18.723	18.860	18.982	19.089	19.180	19.257	19.307	19.364	19.400	19.415	19.400	19.415
	Top of WF	17.801	17.899	17.997	18.095	18.193	18.291	18.389	18.468	18.468	18.468	18.468	18.468	18.468
4 & 9	Top of I-H	18.686	18.838	18.975	19.097	19.205	19.296	19.371	19.422	19.478	19.515	19.527	19.515	19.527
	Top of WF	17.915	18.013	18.111	18.210	18.308	18.406	18.504	18.583	18.583	18.583	18.583	18.583	18.583
5 & 8	Top of I-H	18.779	18.931	19.068	19.190	19.296	19.388	19.464	19.514	19.571	19.608	19.620	19.608	19.620
	Top of WF	18.008	18.106	18.204	18.302	18.401	18.499	18.597	18.676	18.676	18.676	18.676	18.676	18.676
6 & 7	Top of I-H	18.819	18.972	19.108	19.230	19.337	19.428	19.503	19.553	19.612	19.648	19.661	19.648	19.661
	Top of WF	18.049	18.147	18.245	18.343	18.441	18.539	18.637	18.716	18.716	18.716	18.716	18.716	18.716
Crown	Top of I-H	18.821	18.973	19.110	19.232	19.339	19.430	19.507	19.557	19.614	19.650	19.663	19.650	19.663

*NOTE: Elevations are symmetrical about 1/2 Point of Center Span.

Notes

General Notes, see sheet A19.3
 Structural Steel shall be carbon steel and shall conform to ASTM A7 specification amended to date.
 All rivets shall be 3/4" open holes 1/8" All Field Connections shall be riveted.
 All Beam Splices shall have rivet holes sub-punched to 1/8" and riveted to 1/8" before any reaming is done, all stringers of a continuous unit shall be assembled in their proper position with or without the diaphragms in place. Mark and leave assembled for inspection.
 Welding shall conform to the Specification of the American Welding Society for Highway and Railway Bridges 1967, as amended to date.
 Contact surfaces of shop welded or shop riveted Structural Steel shall not be painted. The specifications concerning inaccessible surfaces.
 Top of Beams that are in contact with concrete shall not be painted except over Abutments and Piers. Such surfaces shall be painted for a distance of 5' from the center line of bearing.
 The Structural Steel shall be given one shop coat of red lead paint and two field coats of aluminum paint except fascia girders see Special Provisions - Green Paint for Bridges.
 The Structural Steel shall be inspected by the Illinois Division of Highways before painting.

Method of Determining Flange Heights

After all steel has been erected, elevations of the top flanges of the beams shall be taken at intervals not to exceed 10 ft. From these elevations subtract the increment of deflection for these points determined from the Deflection Diagram. The elevations so obtained subtracted from the theoretical girders elevations, minus 1/8" thickness, equal the flange heights.

Finishing and Erecting Structural Steel

368,176 106

REVISIONS

DATE	BY	DESCRIPTION

DEPARTMENT OF HIGHWAYS
 COOK COUNTY, ILLINOIS

368,176 106

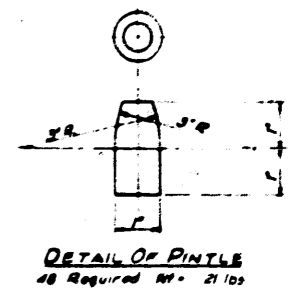
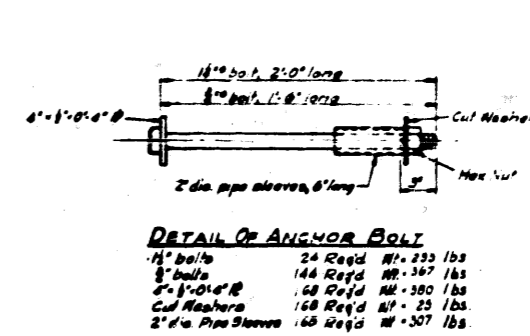
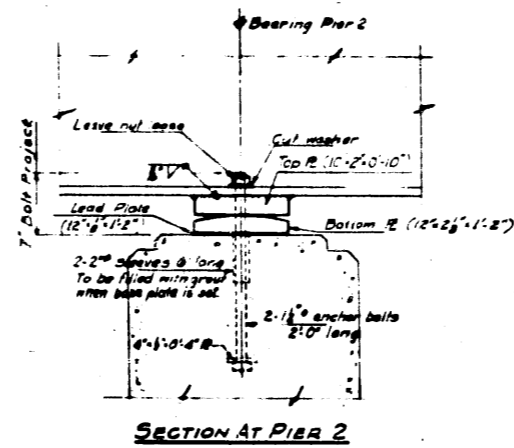
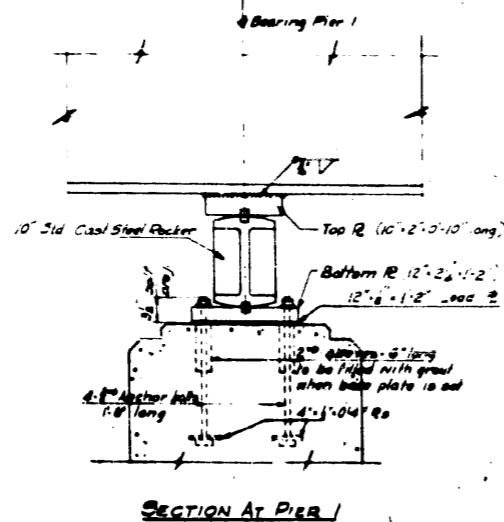
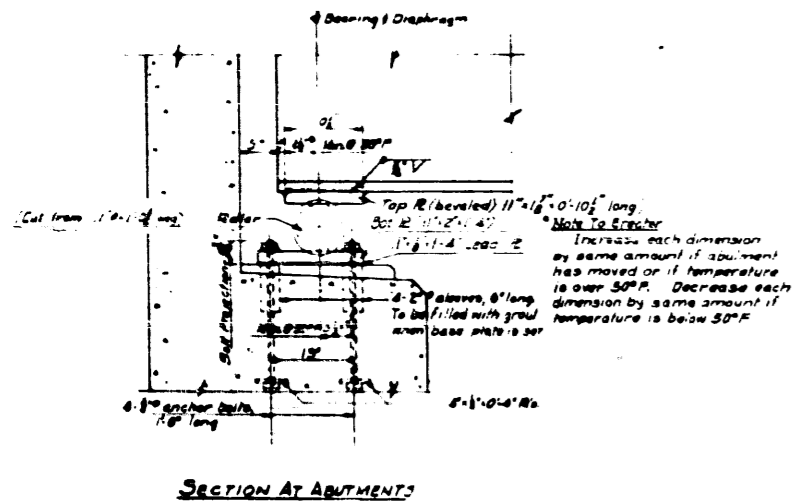
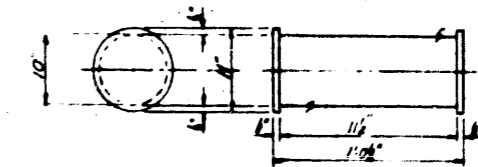
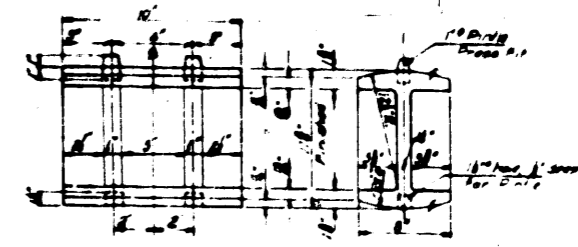
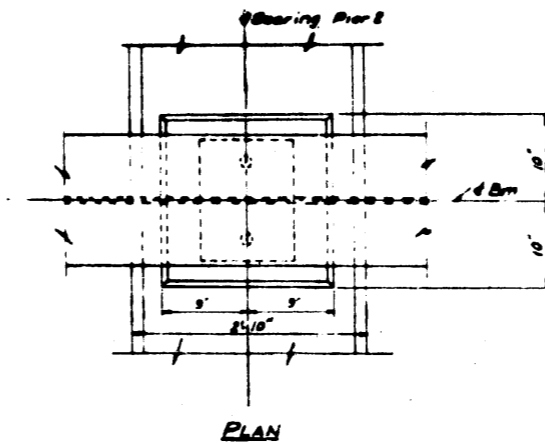
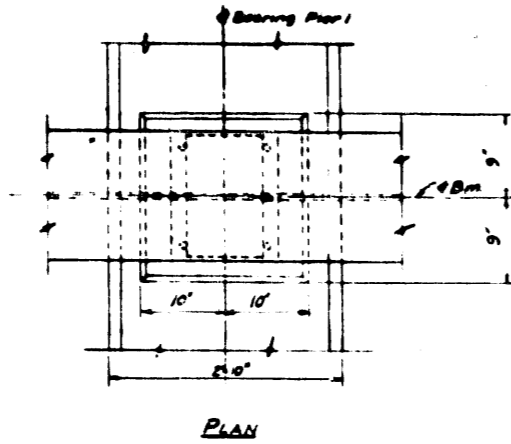
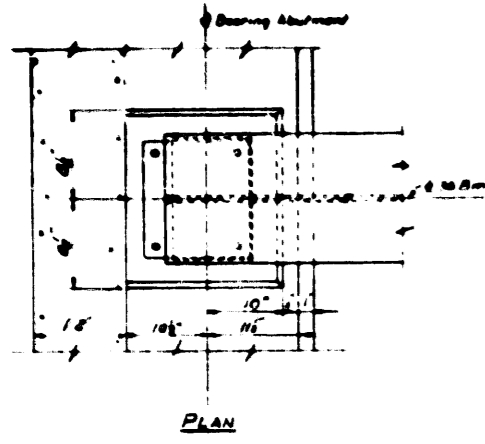
WILLIAM J. VORTIMER
 DIRECTOR OF HIGHWAYS

STRUCTURAL STEEL DETAILS
 PARNELL AVENUE GRADE SEPARATION
 OVER
 SOUTH ROUTE EXPRESSWAY

COMPUTED BY: [Signature]
 DRAWN BY: [Signature]
 CHECKED BY: [Signature]

PROJECT EBI-57-7(36)-358
 SCALE: As Noted
 APPROVED: [Signature]

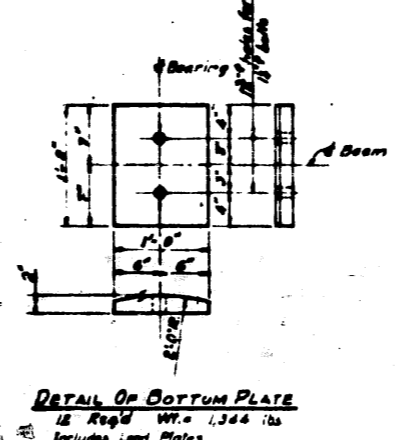
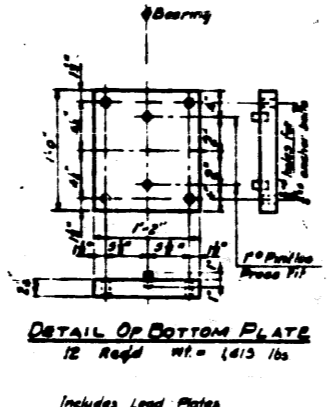
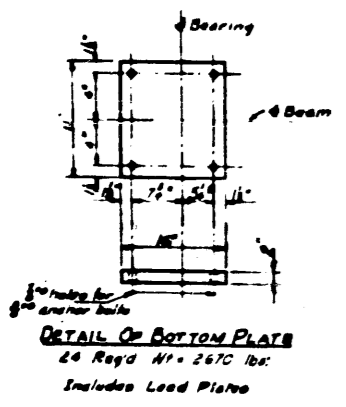
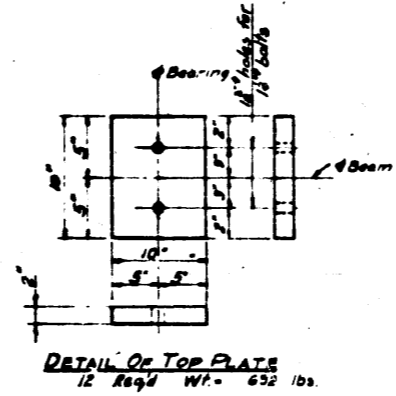
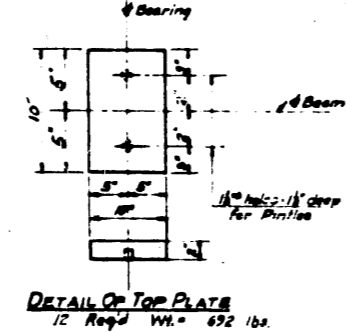
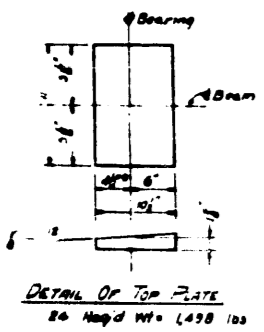
57 068-23239 CF 5 34 5858-S



NOTES:-

Rollers shall be turned down from a solid bar.
For all parts in contact with rollers, the edges adjacent to the rollers shall be rolled, cut square or finished.
Estimate weights of Rollers, Steel Plates, Sleeves, Lead Plates and Anchor Bolts are to be included in the weight of the Structural Steel.
Cast Steel shall conform to the tentative specification for Mild to Medium Strength Carbon Steel Castings for general application, A 37-A A27-Grade 65-35 Full Annealed.

Furnishing and Erecting Structural Steel 2,406 lbs



REVISIONS		
DATE	BY	DESCRIPTION

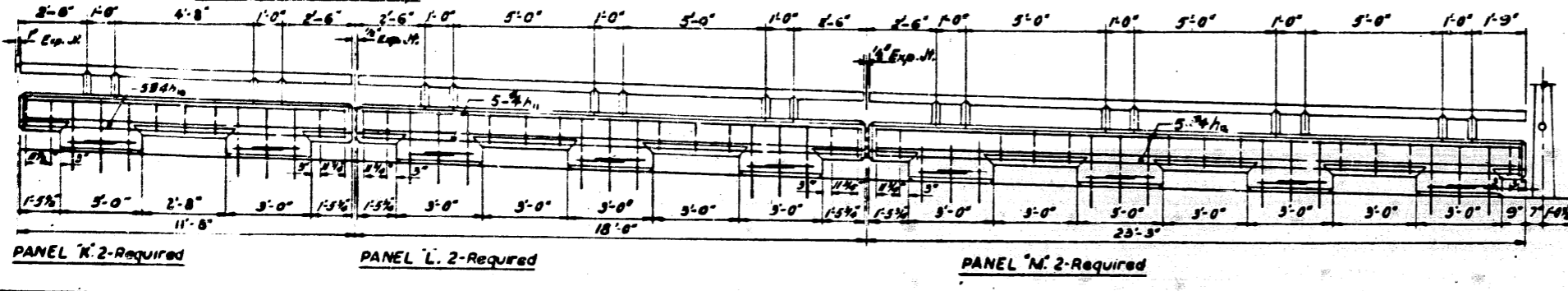
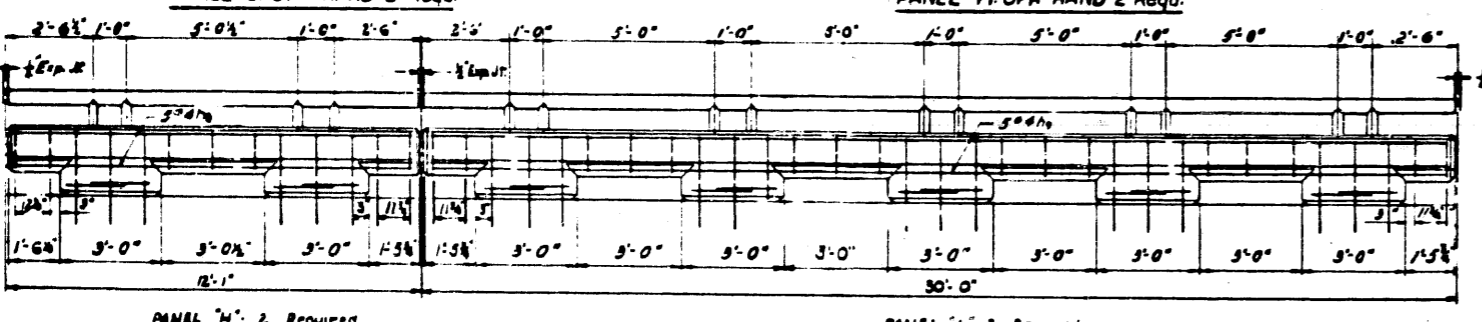
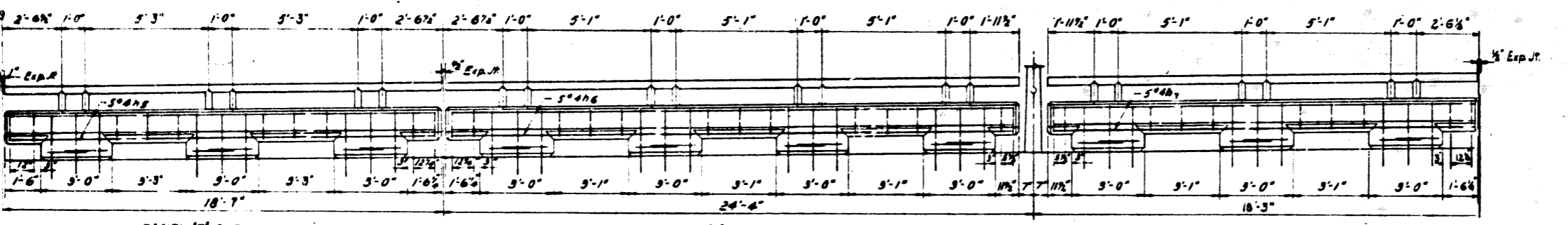
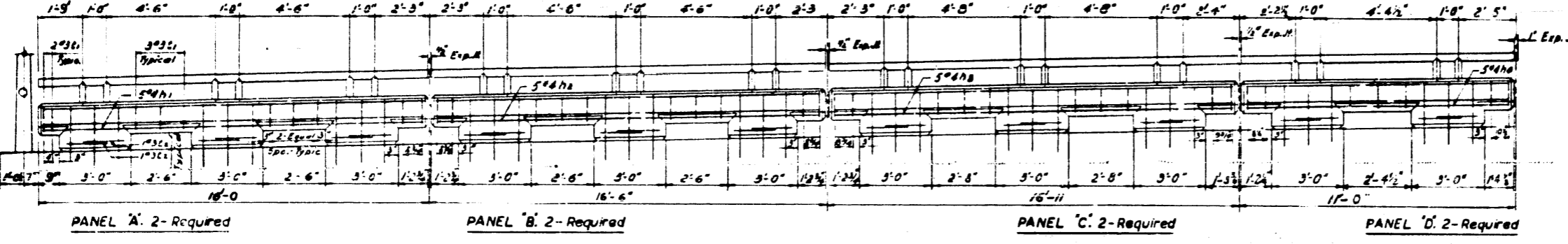
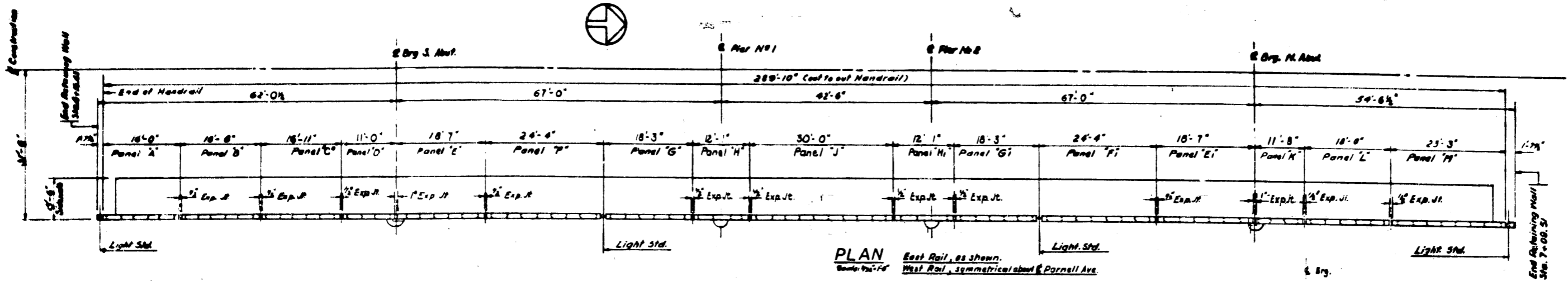
DEPARTMENT OF HIGHWAYS
COOK COUNTY, ILLINOIS

BEARING DETAILS
PARNELL AVENUE GRADE SEPARATION
OVER
SOUTH ROUTE EXPRESSWAY

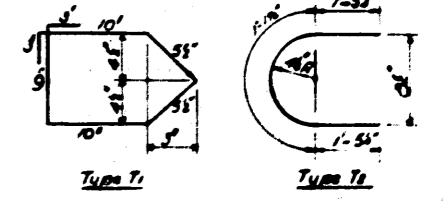
DESIGNED BY: [Signature]
CHECKED BY: R. Nicholson
DATE: [Date]

PROJECT EBL-27, 381, 358
SCALE: AS SHOWN
APPROVED: [Signature]

57	068-23239	6	34	SR 582-S
----	-----------	---	----	----------



Mark No	Size	Length	Sketch	Type
H1	10 #4	15-0	[Sketch]	Str
H2	10 #4	16-2	[Sketch]	Str
H3	10 #4	16-7	[Sketch]	Str
H4	10 #4	10-8	[Sketch]	Str
H5	20 #4	18-3	[Sketch]	Str
H6	20 #4	23-5	[Sketch]	Str
H7	20 #4	17-4	[Sketch]	Str
H8	20 #4	11-7	[Sketch]	Str
H9	10 #4	29-8	[Sketch]	Str
H10	10 #4	11-4	[Sketch]	Str
H11	10 #4	17-8	[Sketch]	Str
H12	10 #4	22-1	[Sketch]	Str
L	32 #5	3-10	[Sketch]	T. See Sketch
P	10 #3	4-0	[Sketch]	T. See Sketch

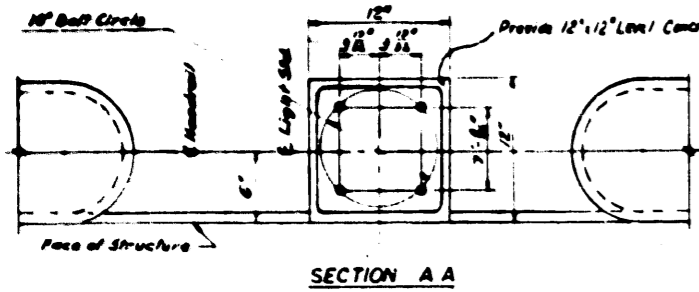


Bill of Material:
Handrail **580 Lin. Ft.**

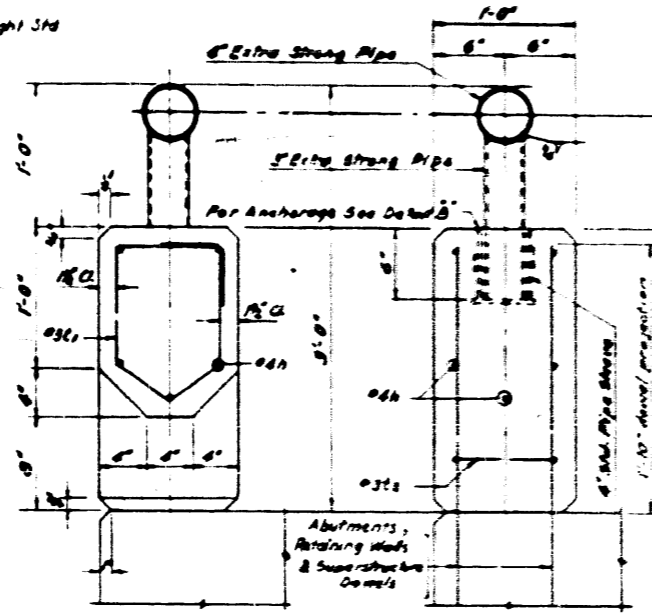
Notes:
For General Notes see Sheet No. 3.
See Special Provisions for Materials, Fabrication, Construction Methods & Basis of Payment.
All Handrail Posts shall be set vertical, all Horizontal Rail Members shall follow the grade line.
For Typical Details, see Sheet No. 8.
For Details & Location of Dowels, see Sheets No. 4-9-12 & 13.

REVISIONS		
DATE	BY	DESCRIPTION

DEPARTMENT OF HIGHWAYS COOK COUNTY, ILLINOIS		WILLIAM J. MORTIMER SUPERVISOR OF HIGHWAYS	
HANDRAIL PARNELL AVENUE GRADE SEPARATION OVER SOUTH ROUTE EXPRESSWAY			
CONV. G.S.M.	PROJ. EBT-57-7(38)-358	SCALE: 3/16" = 1'-0" UNLESS NOTED	APPROVED: [Signature] 7/19/64
DRWN. T.A.	M.E.	DESIGN: G.S.M.	DATE: 7/19/64
57	068-23239 GF	7	34

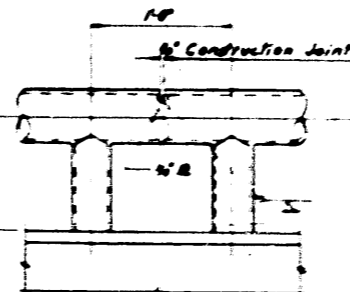


SECTION A A

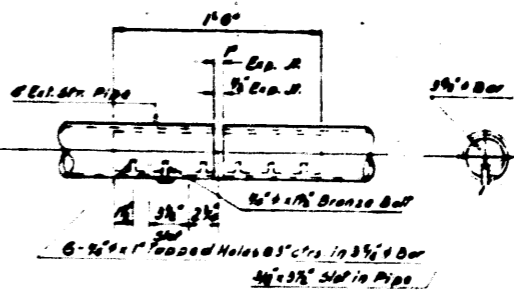


SECTION THROUGH RAIL
SECTION THROUGH POST

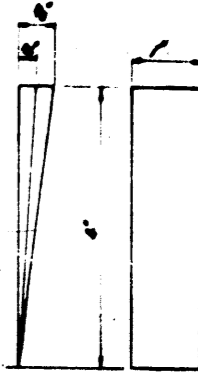
TYPICAL HANDRAIL SECTION
Scale: 1/4" = 1'-0"



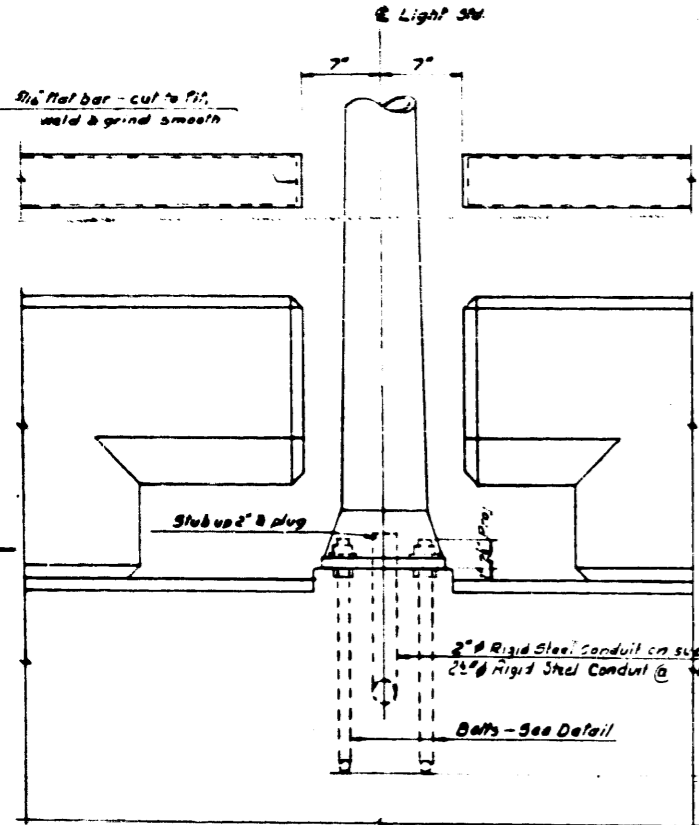
DETAIL - HANDRAIL CONSTRUCTION JOINT



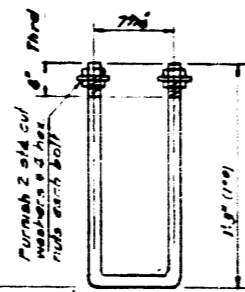
DETAIL - HANDRAIL JOINTS



DETAIL - STEEL WEDGE
Two thicknesses of Wedges shall be furnished so that Drive Fit can be made on Off Centered Post



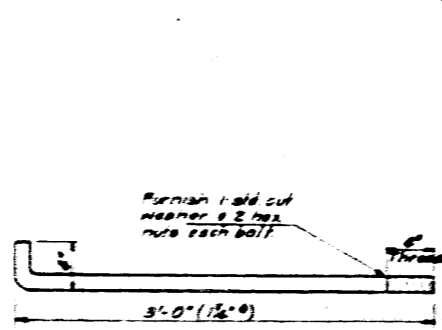
DETAIL - LIGHT STD.
Scale: 1/4" = 1'-0"



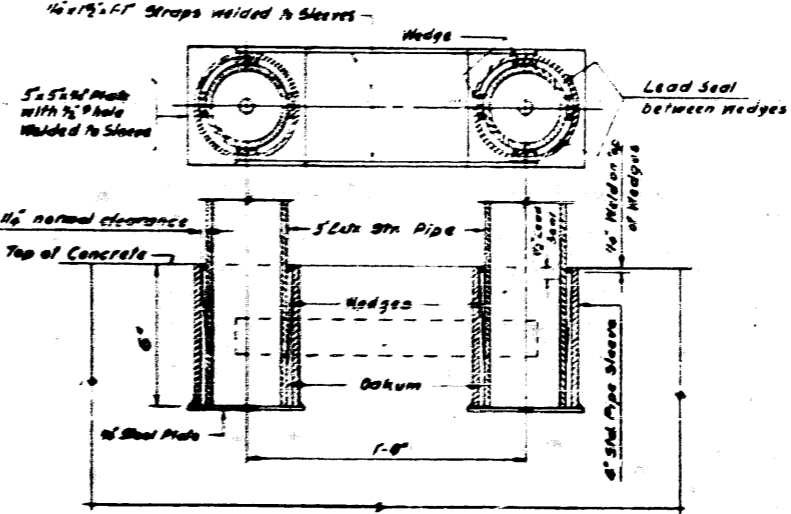
TYPE 'A'
DETAIL OF LIGHT STANDARD ANCHOR BOLTS

TYPE 'A' (ON SUPERSTRUCTURE) 8-REQD
TYPE 'B' (ON WINGWALLS) 16-REQD
Scale: 1/2" = 1'-0"

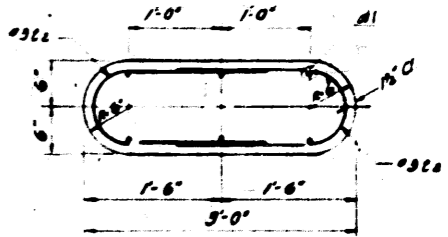
The cost of furnishing & installing light standard anchor bolts in deck slab & wingwalls shall be included in the cost of Class 'C' concrete.



TYPE 'B'



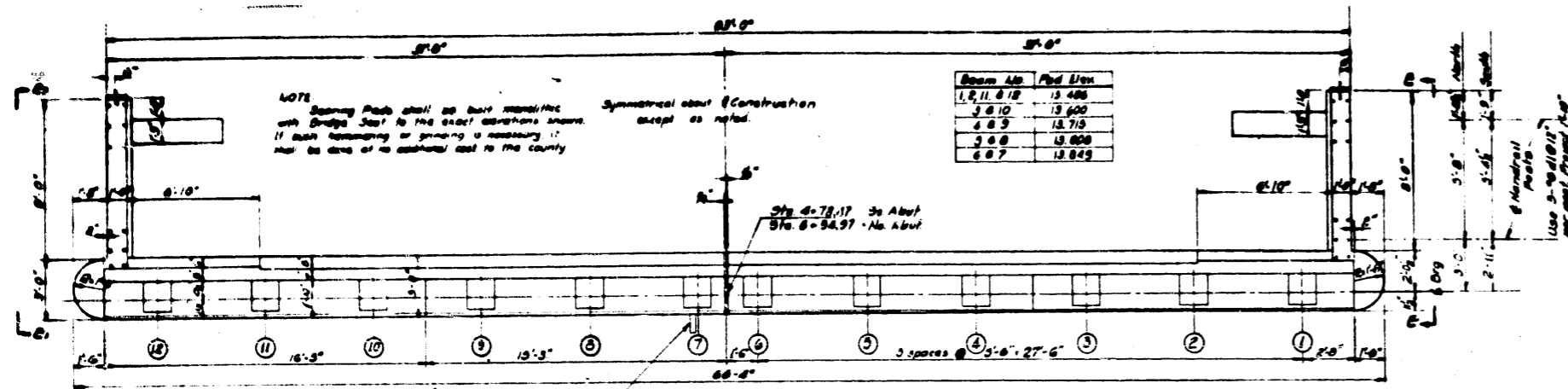
DETAIL - 'B'
Scale: 1/2" = 1'-0"



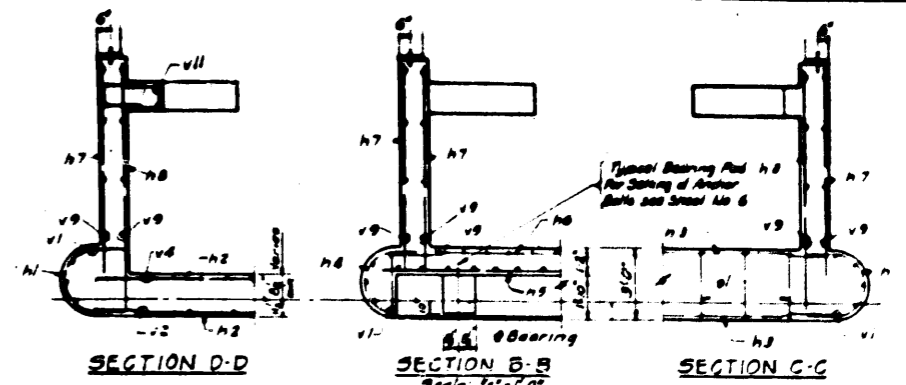
SECTION THRU HANDRAIL POST
Scale: 1/2" = 1'-0"

REVISIONS		
DATE	BY	DESCRIPTION

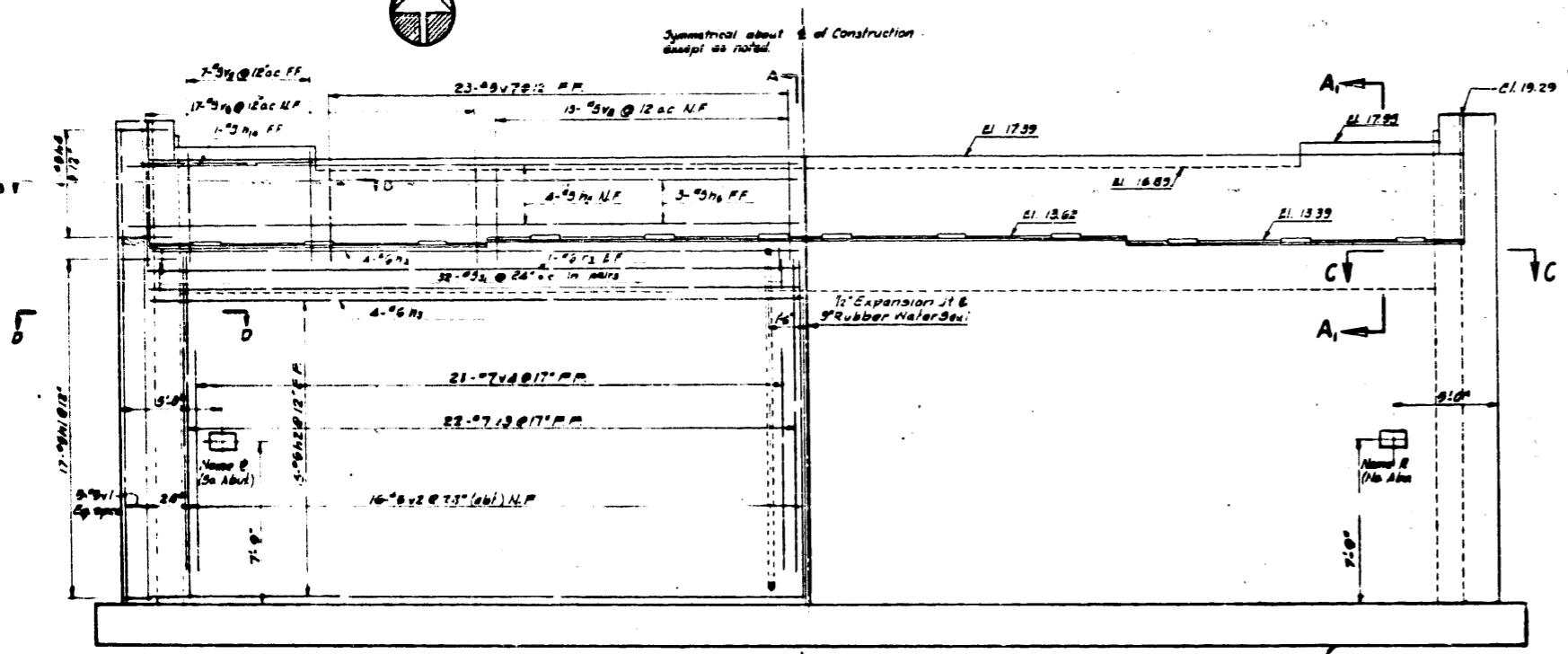
DEPARTMENT OF HIGHWAYS COOK COUNTY, ILLINOIS	
JOHN J. DUFFY MEMBER BOARD OF COMMISSIONERS	WILLIAM J. MONTIERE SUPERVISOR OF HIGHWAYS
HANDRAIL DETAILS PARNELL AVENUE GRADE SEPARATION OVER SOUTH ROUTE EXPRESSWAY	
COMPUTED G.S.M.	PROJECT E81-57-7(38)-318
DRAWN P.A. R.M.S.	SCALE As shown
CHECKED G.S.M.	APPROVED [Signature]
APPROVED [Signature]	DATE 7/1/61
57	068 23239 C.F.
8	34
SR584-5	



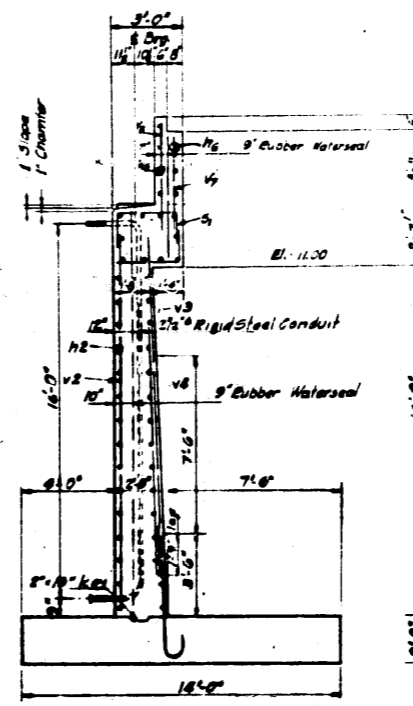
PLAN-NORTH ABUTMENT
SOUTH ABUTMENT-OPP HAND EXCEPT AS NOTED



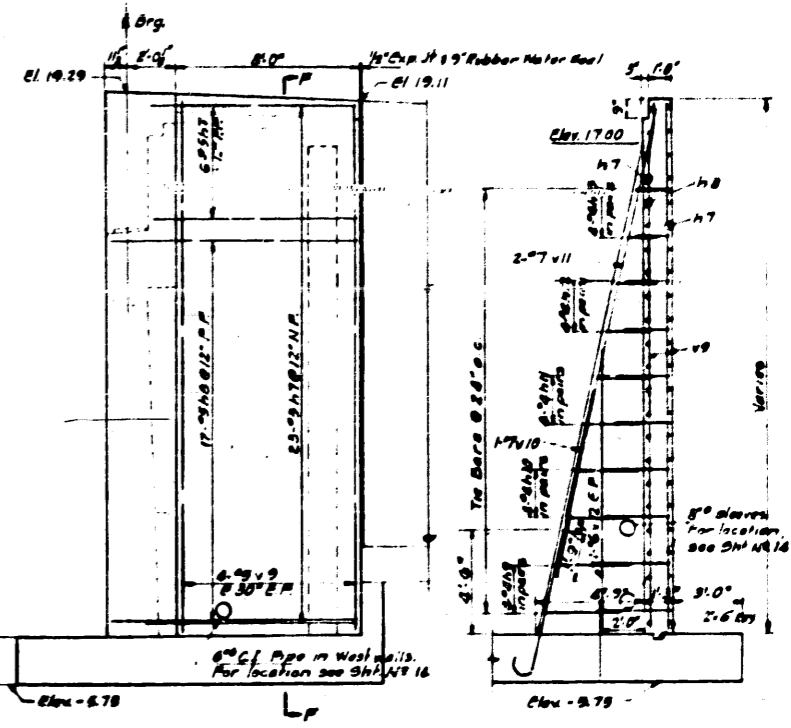
SECTION D-D
SECTION B-B Scale 1/4"=1'-0"
SECTION C-C



ELEVATION
NORTH ABUTMENT-AS SHOWN
SOUTH ABUTMENT-OPP HAND
Scale 1/4"=1'-0"



SECTION A-A
Scale 1/4"=1'-0"



VIEW E-E, OPPOSITE HAND
Scale 1/4"=1'-0"

BAR SCHEDULE-NORTH ABUTMENT

Mark	No	Size	Length	Sketch	Type	A	B	C	D	E	F	G	H	I	J	K	L	M	N	O	P	Q	R
h1	34	3	6-10	[Sketch]	Str																		
h2	60	3	31-0	[Sketch]	Str	1.3	6.4	1.3															
h3	20	3	31-0	[Sketch]	Str																		
h4	12	3	3-3	[Sketch]	Str	2.8	3.4	1.3															
h5	8	3	32-10	[Sketch]	Str																		
h6	6	3	31-0	[Sketch]	Str																		
h7	58	3	31-0	[Sketch]	Str																		
h8	34	3	10-8	[Sketch]	Str																		
h9	8	3	7-6	[Sketch]	Str	3.3	1.0	3.3															
h10	8	3	8-7	[Sketch]	Str	2.9	1.0	3.0															
h11	8	3	5-9	[Sketch]	Str	2.4	1.0	2.4															
h12	8	3	4-10	[Sketch]	Str	1.1	1.0	1.1															
h13	8	3	4-0	[Sketch]	Str	1.6	1.0	1.6															
h14	8	3	7-9	[Sketch]	Str																		

BAR SCHEDULE-SOUTH ABUTMENT

Mark	No	Size	Length	Sketch	Type	A	B	C	D	E	F	G	H	I	J	K	L	M	N	O	P	Q	R
v1	10	3	22-9	[Sketch]	Str																		
v2	32	3	18-0	[Sketch]	Str																		
v3	64	3	14-3	[Sketch]	Str																		
v4	62	3	8-9	[Sketch]	Str																		
v5	14	3	3-9	[Sketch]	Str																		
v6	34	3	9-3	[Sketch]	Str																		
v7	6	3	4-6	[Sketch]	Str																		
v8	30	3	4-9	[Sketch]	Str																		
v9	10	3	22-8	[Sketch]	Str																		
v10	2	7	8-0	[Sketch]	Str																		
v11	2	7	20-2	[Sketch]	Str																		
v12	4	3	17-3	[Sketch]	Str																		
s1	68	3	6-3	[Sketch]	Str	1.9	2.9	1.9															
s1	12	6	6-3	[Sketch]	Str	2.0	6.7	2.0															

Reinforcing steel for South Abutment same as above

BILL OF MATERIAL (TWO ABUTS)

Class X Concrete	1374 Cu Yds
Reinforcement Bars	16,343 Lbs
2 1/2" Dia. Rigid Steel Conduit	38 Lm Ft
Name Plates	2 Each

REVISIONS

DATE	BY	DESCRIPTION

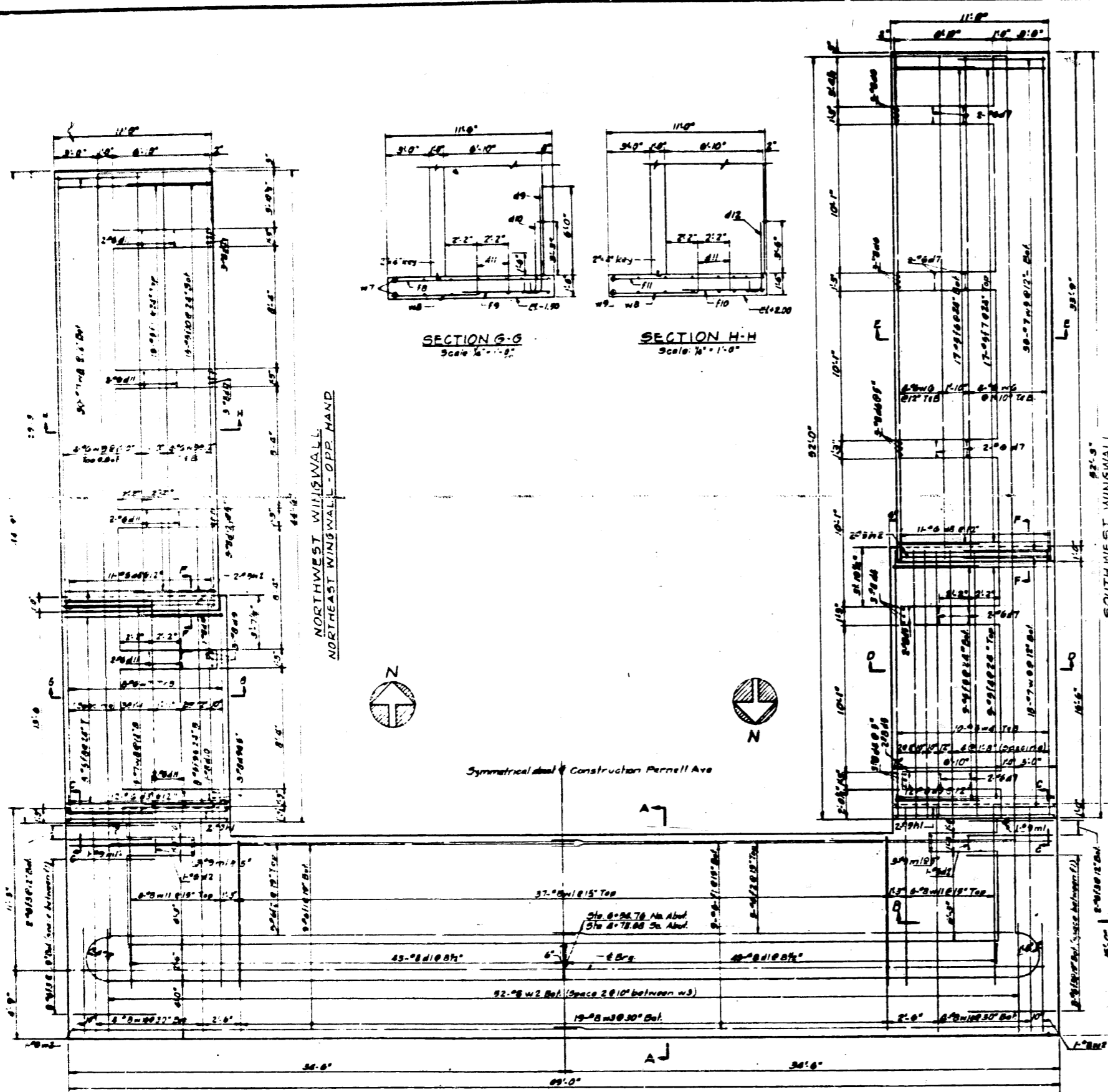
DEPARTMENT OF HIGHWAYS
COOK COUNTY, ILLINOIS

ABUTMENT DETAILS
FARNELL AVENUE GRADE SEPARATION
OVER
SOUTH ROUTE EXPRESSWAY

COMPILED: E.S.M. S.M.V. PROJECT EBI-57-7130, 359
DRAWN: R.W.Z. M. Nicholas. SCALE: As Noted
CHECKED: M.H.M. APPROVED: [Signature]

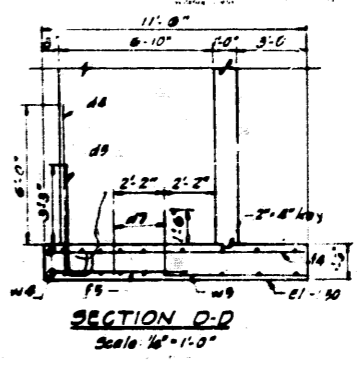
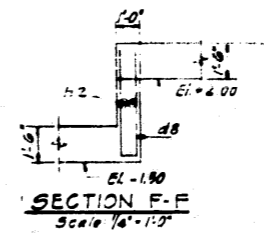
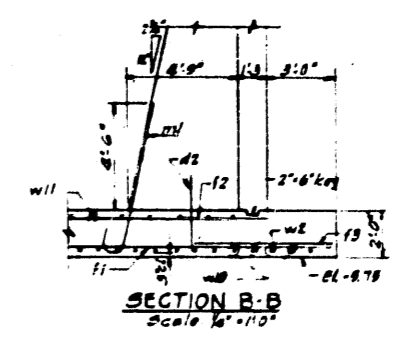
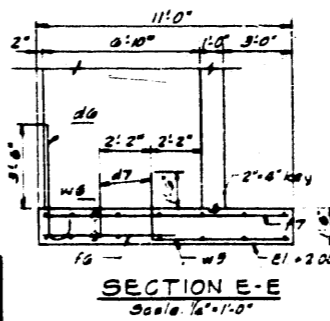
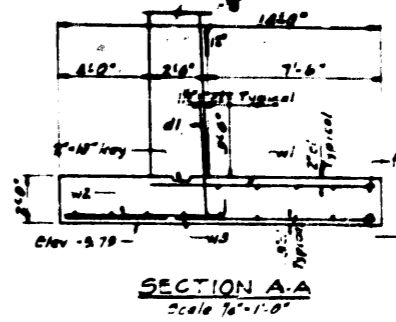
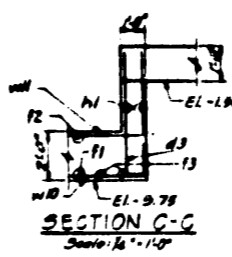
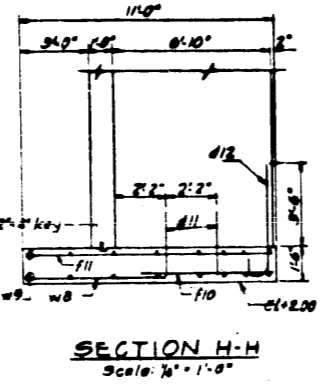
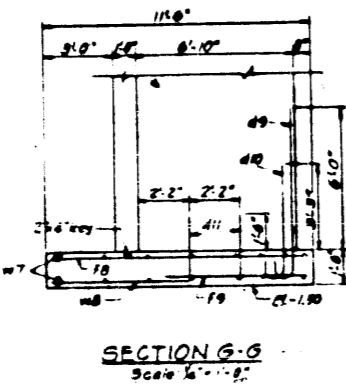
APPROVED: [Signature] DATE: 7-18-57

Sheet No.	57	Project No.	068-23239
Scale	9	Date	34
Drawn By	CF	Checked By	SR 585-S



NORTH ABUTMENT FOOTING
Scale 1/4" = 1'-0"

SOUTH ABUTMENT FOOTING
Scale 1/4" = 1'-0"



BAR SCHEDULE - SW WINGWALL

TYPE I	TYPE 17					
Mark No	Size Length	Sketch	Type	A	B	C
d6	8 @ 8	5-8	C	1	11-9	
d9	8 @ 8	5-7	C	1	11-8	
d8	8 @ 8	9-10	C	1	8-9	
d7	10 @ 8	8-8	C	17	2-0	11-2-9
d8	11 @ 8	9-9	C	17	8-0	9-8-8
f8	9 @ 11-0		Sfr			
f9	9 @ 8-0		Sfr			
f6	17 @ 8-0		Sfr			
f7	17 @ 10-8		Sfr			
h2	2 @ 10-8		Sfr			
w8	20 @ 18-0		Sfr			
w9	33 @ 7-0		Sfr			
w6	16 @ 35-3		Sfr			

BAR SCHEDULE - NE WINGWALL

TYPE I	TYPE 17					
Mark No	Size Length	Sketch	Type	A	B	C
d8	11 @ 8	9-7	C	1	11-8	
d9	8 @ 8	8-8	C	1	11-8	
d10	2 @ 8	9-7	C	1	11-8	
d11	10 @ 8	8-8	C	17	2-0	11-2-9
d12	7 @ 8	8-7	C	1	11-8	
f8	8 @ 11-0		Sfr			
f9	8 @ 8-0		Sfr			
f10	9 @ 8-0		Sfr			
f11	9 @ 10-8		Sfr			
h2	2 @ 10-8		Sfr			
w7	16 @ 19-0		Sfr			
w8	48 @ 7-0		Sfr			
w9	16 @ 35-3		Sfr			

BAR SCHEDULE - NO ABUTMENT

TYPE I	TYPE 17					
Mark No	Size Length	Sketch	Type	A	B	C
d1	8 @ 8	8-8	C	1	11-9	
d2	2 @ 7-9	7-9	C	17	3-3	11-3-3
d3	2 @ 11-8	11-8	C	17	9-3	0-9-3
f1	8 @ 39-0		Sfr			
f2	10 @ 32-3		Sfr			
f3	20 @ 6-0		Sfr			
h1	4 @ 11-0		Sfr			
m1	8 @ 7-8		C	1	13	8-3
w1	37 @ 10-3		Sfr			
w2	34 @ 6-9		Sfr			
w3	19 @ 13-6		Sfr			
w10	8 @ 18-6		Sfr			
w11	12 @ 12-3		Sfr			

BILL OF MATERIAL (TWO FOOTINGS)

Class X Concrete	279.9 Cuyds.
Reinforcement Bars	25,667 Lbs.

DEPARTMENT OF HIGHWAYS
COOK COUNTY, ILLINOIS

JOHN J. DUFF, President Board of Commissioners
WILLIAM J. MORTIMER, Superintendent of Highways

FOOTING DETAILS
PARNELL AVENUE GRADE SEPARATION
OVER
SOUTH ROUTE EXPRESSWAY

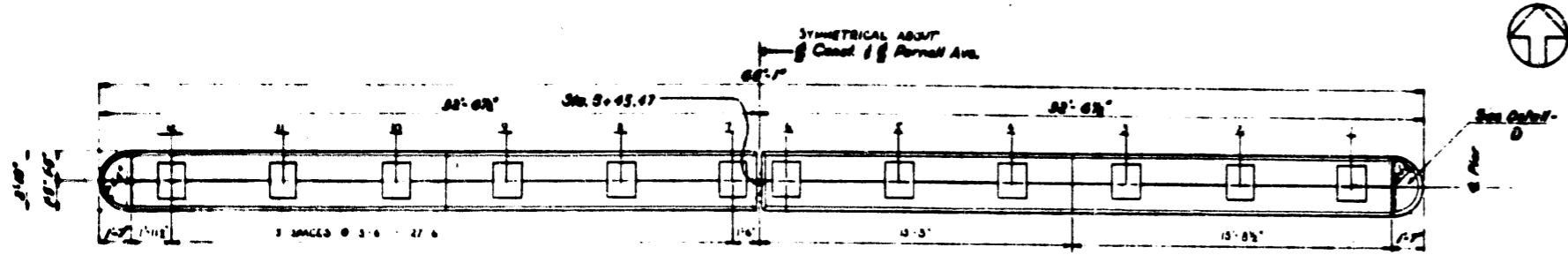
COMPUTED BY: G.S.P.
DRAWN BY: E.W.S.
CHECKED BY: H.A.D.

PROJECT: EB1-57-71301-358
SCALE: AS SHOWN

APPROVED: [Signature]

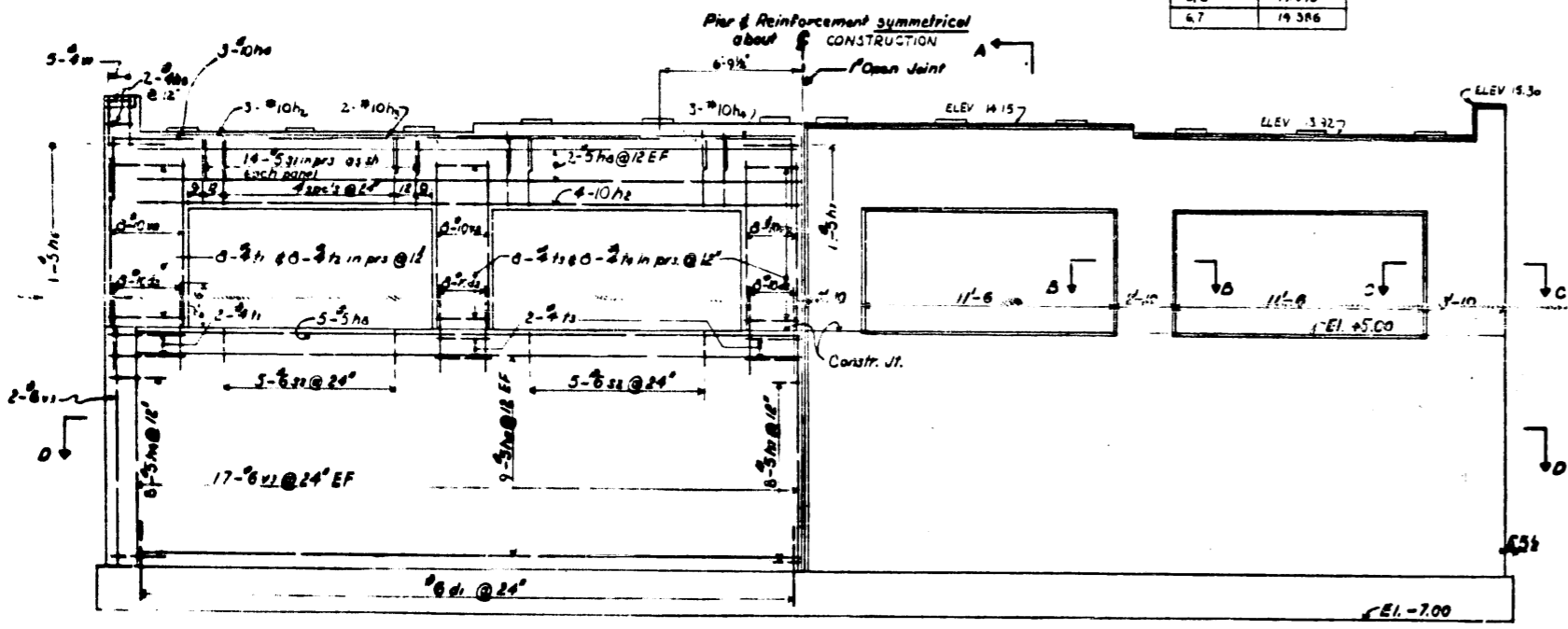
DATE	BY	DESCRIPTION

Sheet No. 57 of 57
068-23233
10 34 5R 585-5

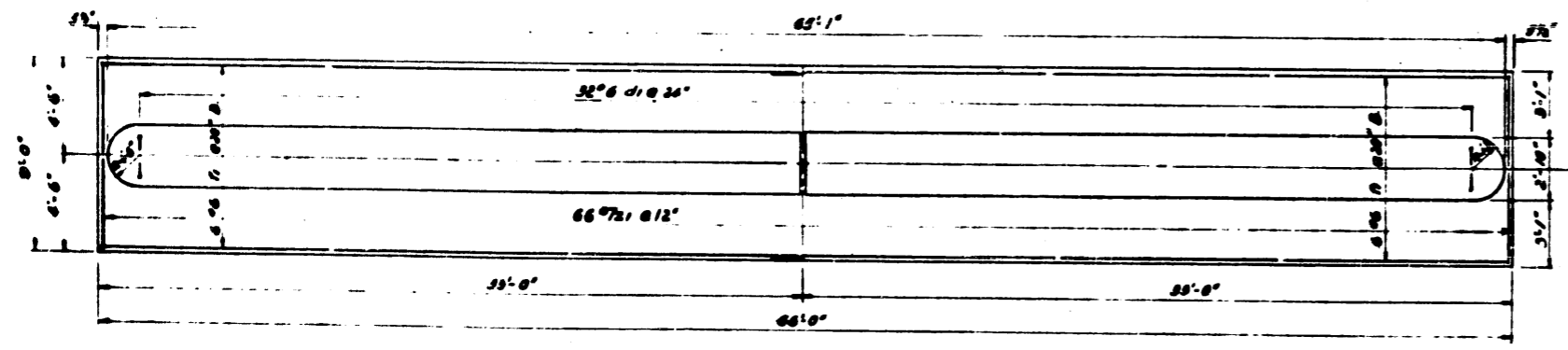


PLAN - PIER NO 1
Scale: 1/4" = 1'-0"

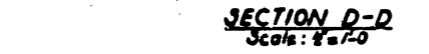
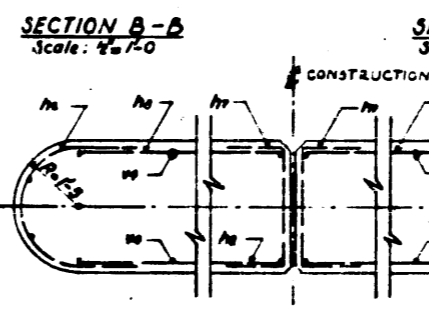
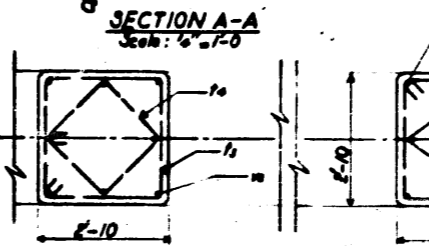
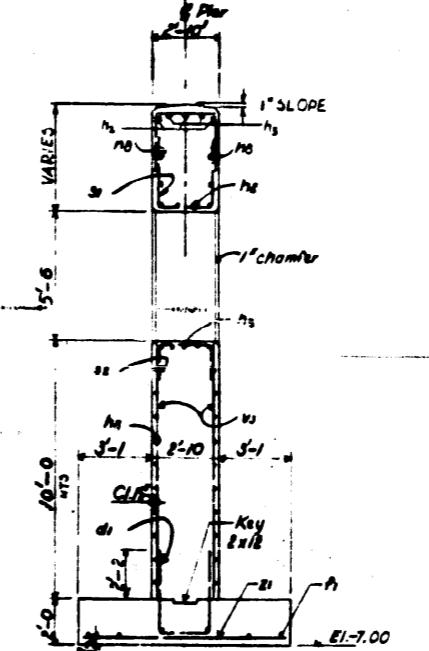
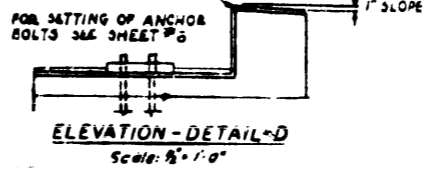
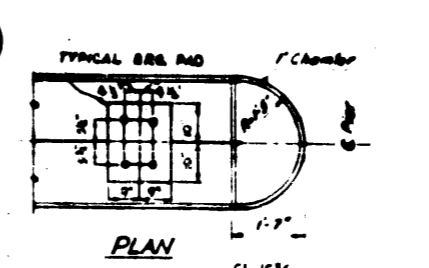
BEAM NO	RAO ELEV
1, 2, 11, 12	14 024
3, 10	14 138
4, 9	14 253
5, 8	14 346
6, 7	14 386



ELEVATION - PIER NO 1
Scale: 1/4" = 1'-0"



FOOTING PLAN OF PIER NO 1
Scale: 1/4" = 1'-0"



BAR SCHEDULE											
Mark	No	Size	Length	Sketch	Type	A	B	C	D	E	F
di	22	#6	10-5	[Sketch]	S/P						
di	20	#6	5-5	[Sketch]	S/P						
di	21	#6	3-9	[Sketch]	S/P						
di	14	#10	30-8	[Sketch]	S/P						
di	4	#10	18-0	[Sketch]	S/P						
di	18	#10	7-0	[Sketch]	S/P						
di	4	#4	7-9	[Sketch]	T20						
di	18	#5	8-9	[Sketch]	T20						
di	18	#5	5-3	[Sketch]	S/P						
di	24	#5	30-9	[Sketch]	S/P						
di	58	#5	7-5	[Sketch]	S/P						
di	20	#6	5-9	[Sketch]	S/P						
di	20	#6	12-0	[Sketch]	S/P						
di	16	#6	9-9	[Sketch]	T4						
di	40	#4	11-3	[Sketch]	T1						
di	36	#4	8-3	[Sketch]	T1						
di	10	#6	2-6	[Sketch]	S/P						
di	48	#6	7-9	[Sketch]	S/P						
di	72	#6	9-9	[Sketch]	S/P						
di	68	#7	0-6	[Sketch]	S/P						

BILL OF MATERIAL		
Class 'X' Concrete	146.3	Cu. Yds.
Reinforcement Bars	11,180	Lbs.

NOTES:
For General Notes see Sheet No 3

DEPARTMENT OF HIGHWAYS
COOK COUNTY, ILLINOIS

JOHN J. TUOHY
MEMBER BOARD OF COMMISSIONERS

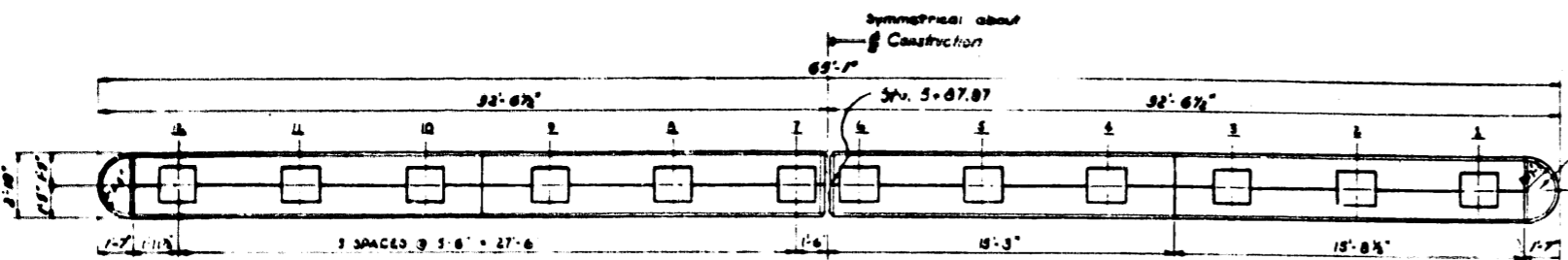
WILLIAM J. MORTIMER
ENGINEER IN CHARGE

DETAILS - PIER I
PARNELL AVENUE GRADE SEPARATION
OVER
SOUTH ROUTE EXPRESSWAY

PROJECT E81-57-7(30)-358
SCALE AS SHOWN
APPROVED [Signature]

DATE	BY	DESCRIPTION

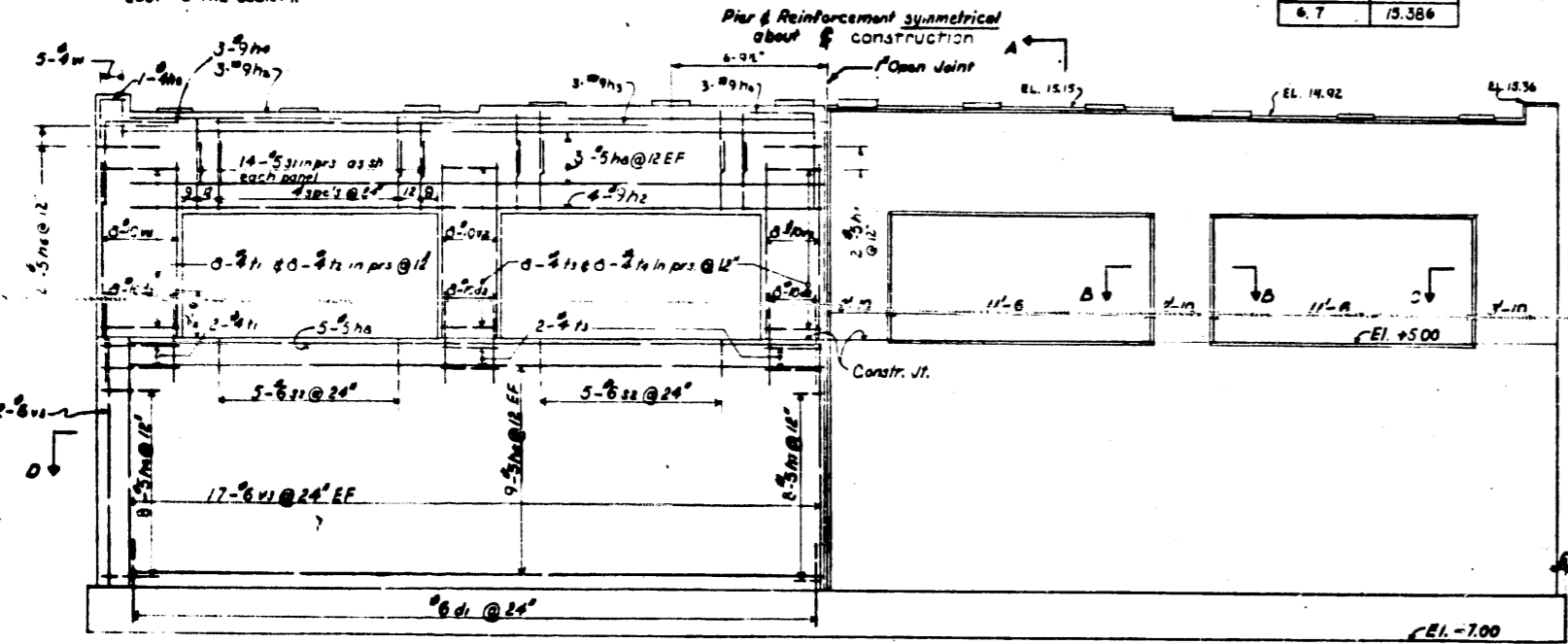
57 068-23239 11A 34 SR 987-5



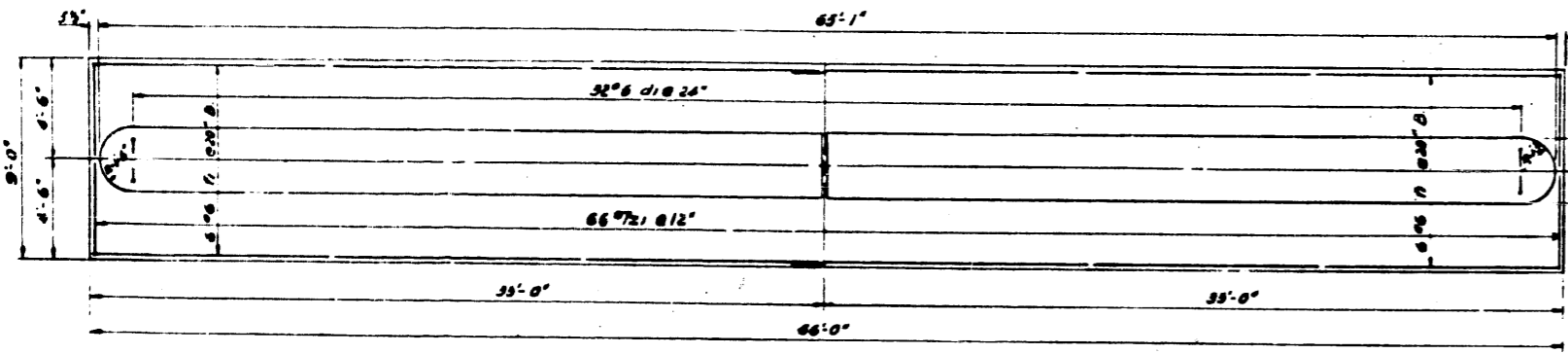
PLAN - PIER NO 2
Scale: 1/4" = 1'-0"

DEAM NO.	PAD ELEV.
1, 2, 11, 12	13.024
3, 10	13.138
4, 9	13.253
5, 8	13.366
6, 7	13.586

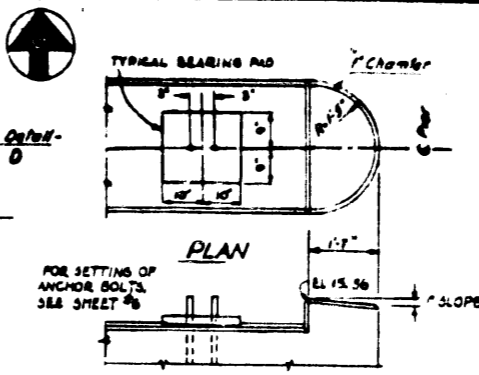
NOTE: BEARING PADS SHALL BE BUILT MONOLITHIC WITH BRIDGE SEAT TO THE EXACT ELEVATIONS SHOWN. IF BUSH HAMMERING OR GRINDING IS NECESSARY, IT SHALL BE DONE AT NO ADDITIONAL COST TO THE COUNTY.



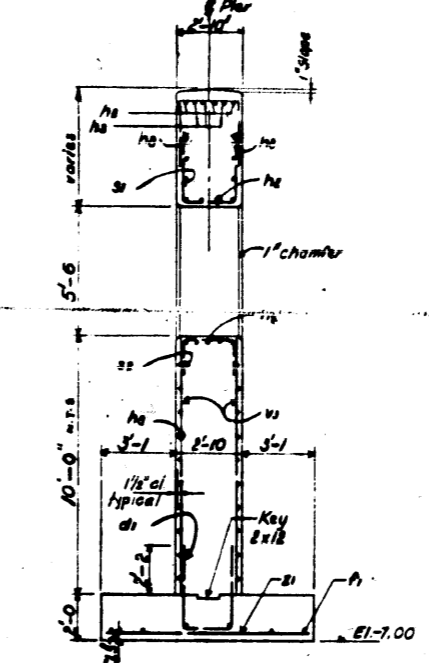
ELEVATION - PIER NO 2
Scale: 1/4" = 1'-0"



FOOTING PLAN OF PIER NO 2
Scale: 1/4" = 1'-0"



ELEVATION-DETAIL-D
Scale: 3/4" = 1'-0"



SECTION A-A
Scale: 3/4" = 1'-0"

SECTION B-B
Scale: 1/2" = 1'-0"

SECTION C-C
Scale: 1/2" = 1'-0"

SECTION D-D
Scale: 1/2" = 1'-0"

BAR SCHEDULE											
Mark	No.	Size	Length	Sketch	Type	A	B	C	D	E	F
h1	14	#4	30-9	[Sketch]	3/10						
h2	6	#4	78-0	[Sketch]	3/10						
h3	18	#4	7-6	[Sketch]	3/10						
h4	8	#4	7-9	[Sketch]	7/20						
h5	20	#5	8-9	[Sketch]	7/20						
h6	20	#5	5-3	[Sketch]	3/10						
h7	58	#5	30-9	[Sketch]	3/10						
h8	58	#5	8-3	[Sketch]	3/10						
h9	80	#6	5-9	[Sketch]	3/10						
h10	20	#4	12-0	[Sketch]	3/20						
h11	18	#4	9-9	[Sketch]	7/4						
h12	40	#4	11-3	[Sketch]	7/1						
h13	32	#4	8-3	[Sketch]	7/1						
v1	10	#4	1-6	[Sketch]	3/10						
v2	48	#4	7-3	[Sketch]	1/2						
v3	72	#6	9-9	[Sketch]	3/10						
z1	66	#7	8-6	[Sketch]	3/10						

BILL OF MATERIAL		
Class 'X' Concrete	152.8	Cu. Yds.
Reinforcement Bars	14992	Lbs.

Notes: For General Notes see Sheet No. 3

DEPARTMENT OF HIGHWAYS
COOK COUNTY, ILLINOIS

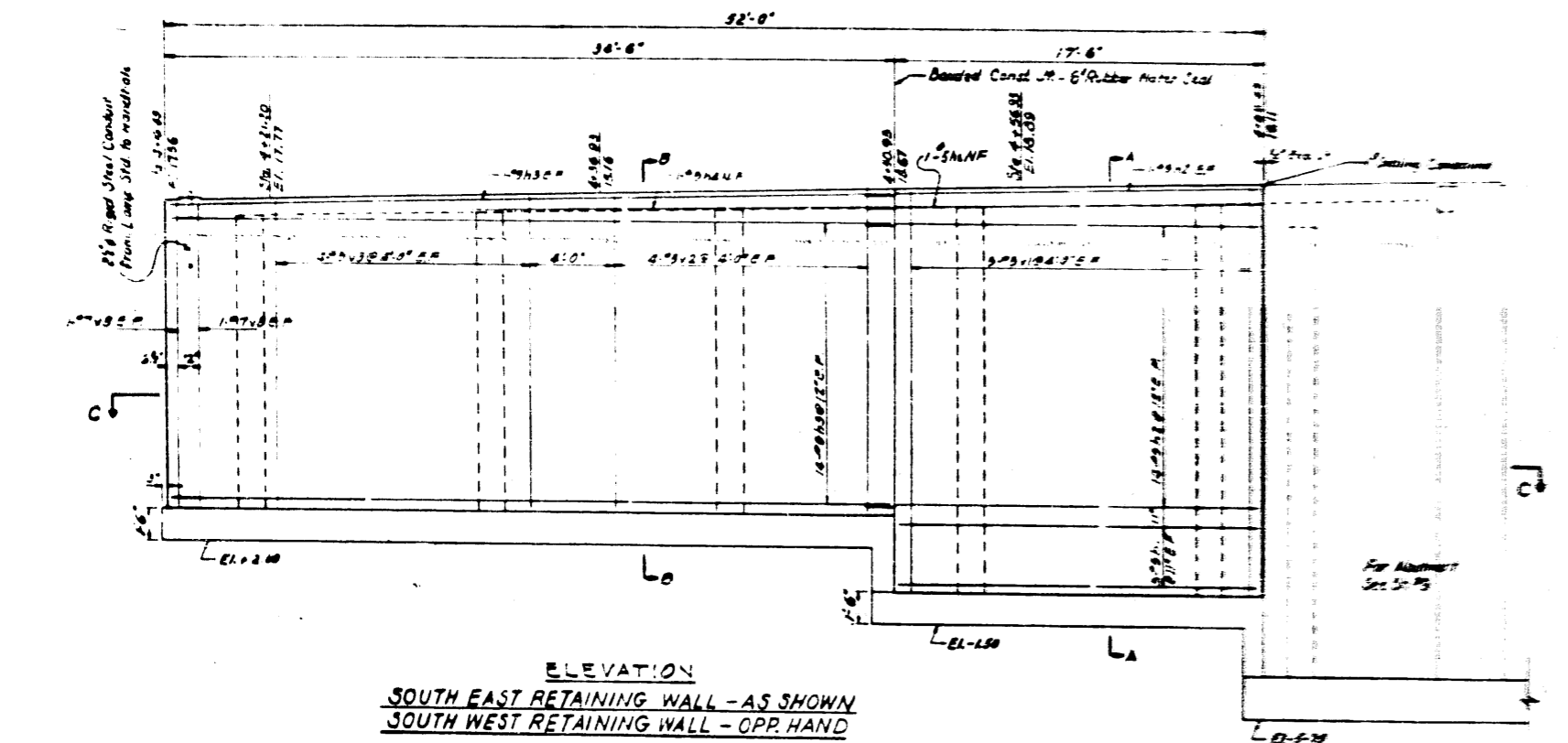
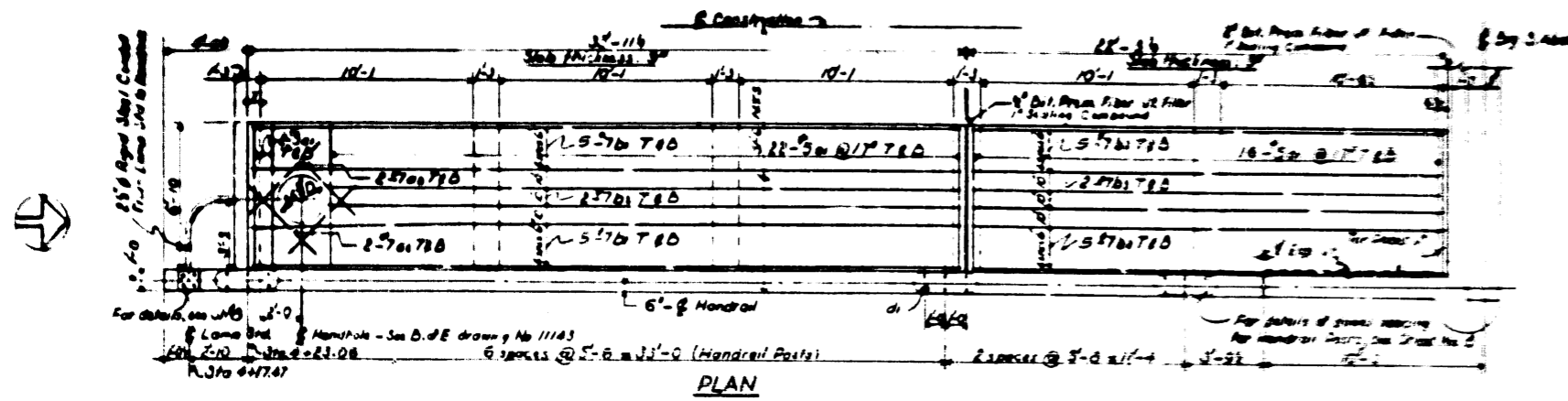
DETAILS - PIER 2
PARNELL AVENUE GRADE SEPARATION
OVER
SOUTH ROUTE EXPRESSWAY

COMPUTED: G.S.O. PROJECT E 81-57-7(391)-358
DRAWN: F.A.M.E. SCALE AS SHOWN
CHECKED: G.S.M. APPROVED: [Signature]

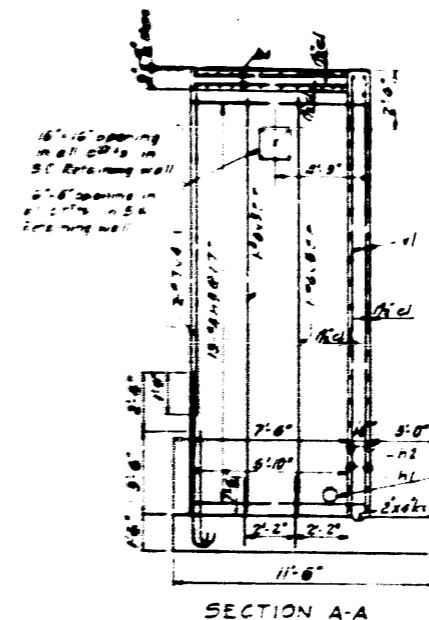
APPROVED: [Signature]

57 068-23239 C.F. 118 34 58567-5

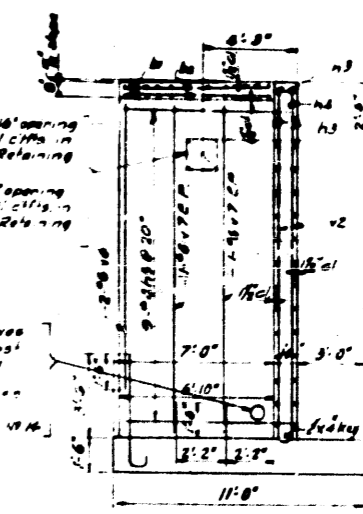
REVISIONS		
DATE	BY	DESCRIPTION



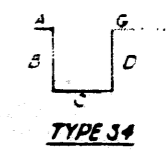
ELEVATION
SOUTH EAST RETAINING WALL - AS SHOWN
SOUTH WEST RETAINING WALL - OPP. HAND



SECTION A-A



SECTION B-B

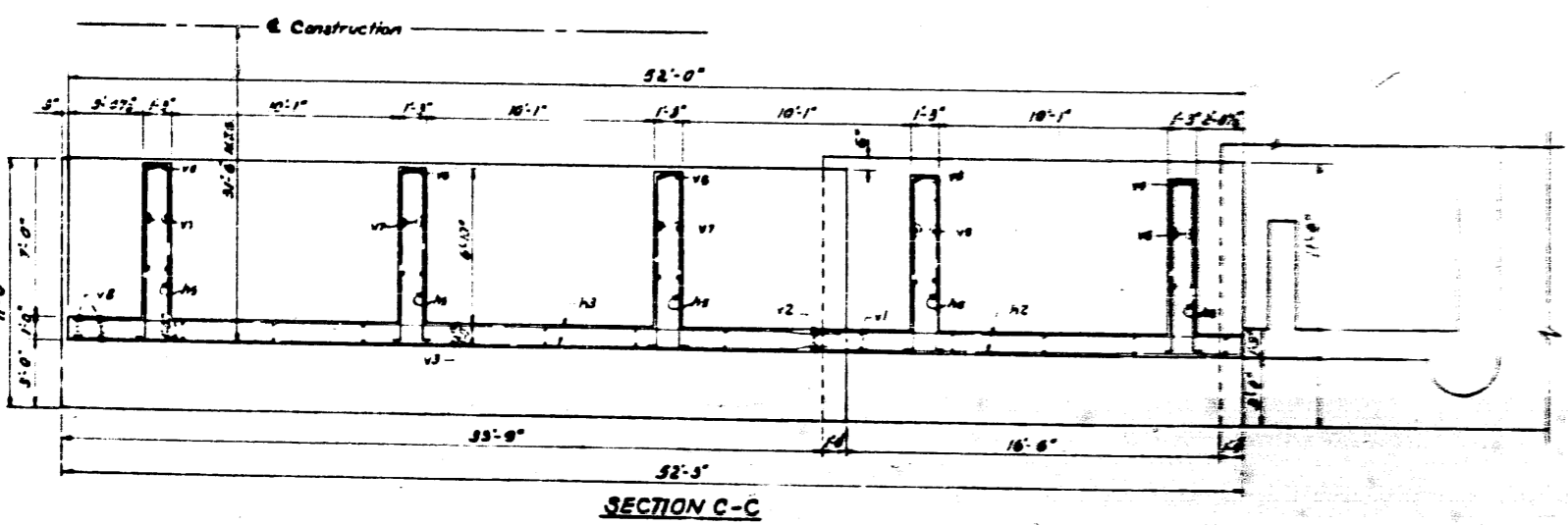


TYPE 34

NOTES:
For General Notes, see Sheet #3.
For Details of setting of dowels for Handrail Posts and Anchor Bolts for Lamp Standards, see Sheet #5.
For Details of Expansion and Construction Joints, see Sheet #10.

BAR SCHEDULE (C REQ'D)									
Mark	No	Size	Length	Sketch	Type	A	B	C	D
a1	96	5	6-7		Str				
a2	3	7	4-6		Str				
b1	20	7	33-8		Str				
b2	4	7	29-11		Str				
b3	24	7	22-3		Str				
h1	8	9	17-0		Str				
h2	31	9	18-9		Str				
h3	30	9	34-2		Str				
h4	1	9	22-0		Str				
h5	93	8	17-0		Str	8-9	7-7	1-0	7-7-9
v1	10	9	18-6		Str				
v2	8	9	18-6		Str				
v3	8	9	18-1		Str				
v4	4	7	18-9		Str				
v5	8	8	17-9		Str				
v6	6	6	11-9		Str				
v7	12	6	13-8		Str				
v8	4	7	13-10		Str				
d1	27	5	8-3		SB	8-10	0-7	1-10	

BILL OF MATERIAL (Two Walls)	
Class 'X' Concrete	132.3 Cu Yds
Reinforcement Bars	13,789 Lbs



SECTION C-C

REVISIONS		
DATE	BY	DESCRIPTION

DEPARTMENT OF HIGHWAYS
COOK COUNTY, ILLINOIS

JOHN J. DUFFY
CHIEF ENGINEER

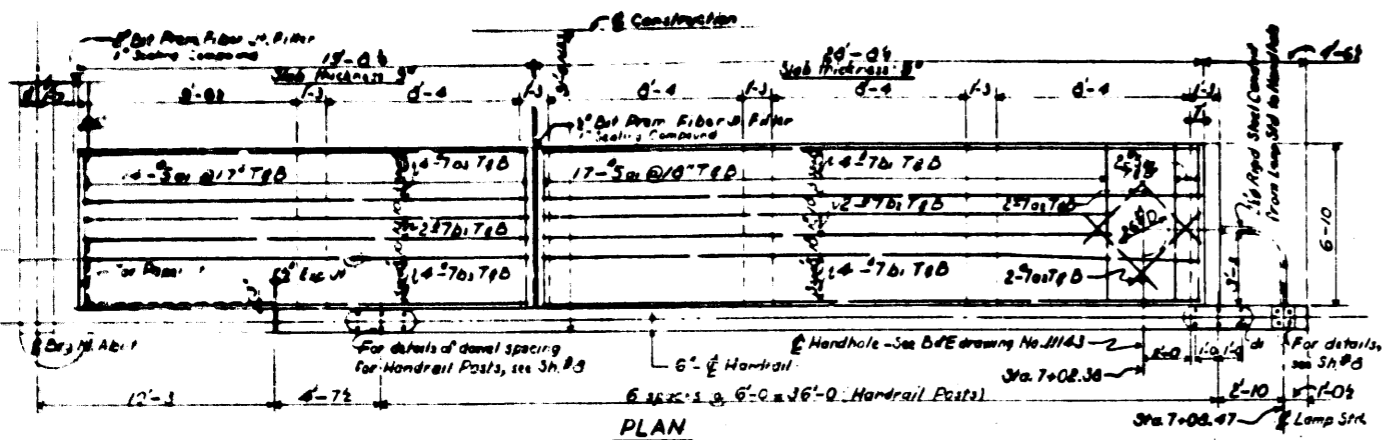
WILLIAM J. MONTGOMERY
DEPARTMENT OF HIGHWAYS

SOUTH RETAINING WALLS & SIDEWALKS
PARNELL AVENUE GRADE SEPARATION
OVER
SOUTH ROUTE EXPRESSWAY

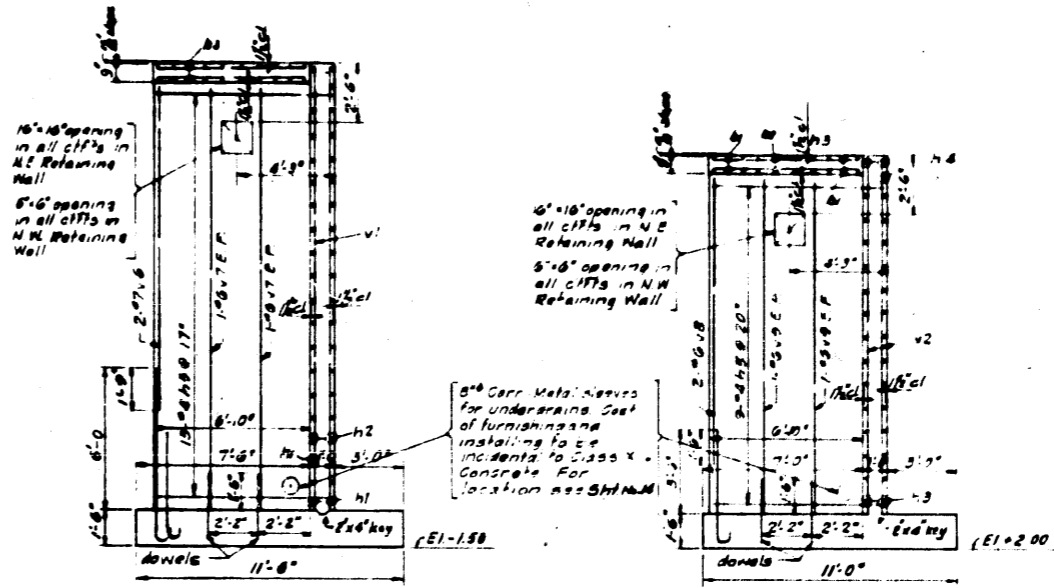
COMPUTED: G.S.M.
DRAWN: T.A.E.W.
CHECKED: G.S.M.

PROJECT: E91-97-7138(1)-398
SCALE: 3/8" = 1'-0"
APPROVED: [Signature]

57	068-23233	12	34	SR 589-5
----	-----------	----	----	----------



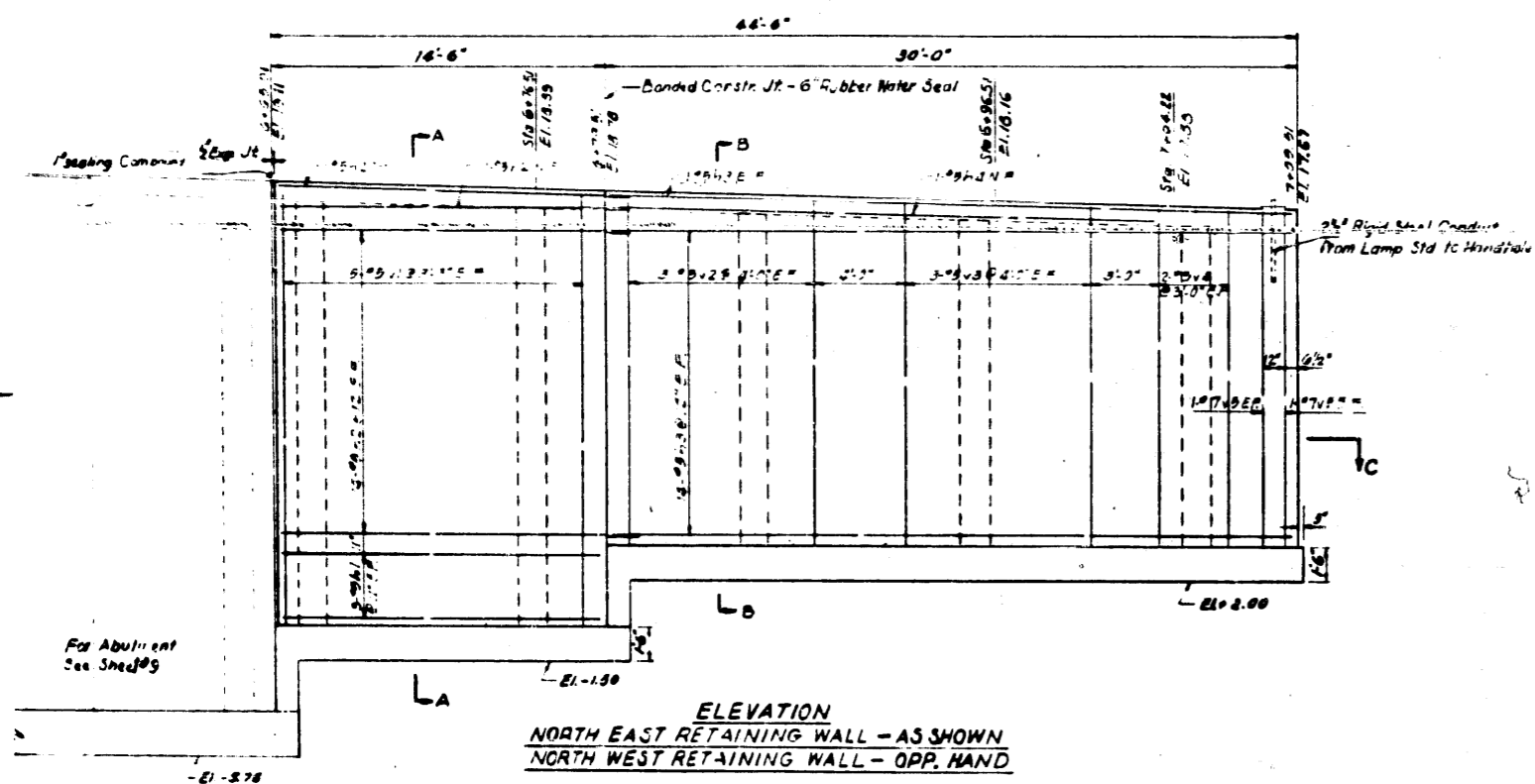
PLAN



SECTION A-A

SECTION B-B

TYPE C-4

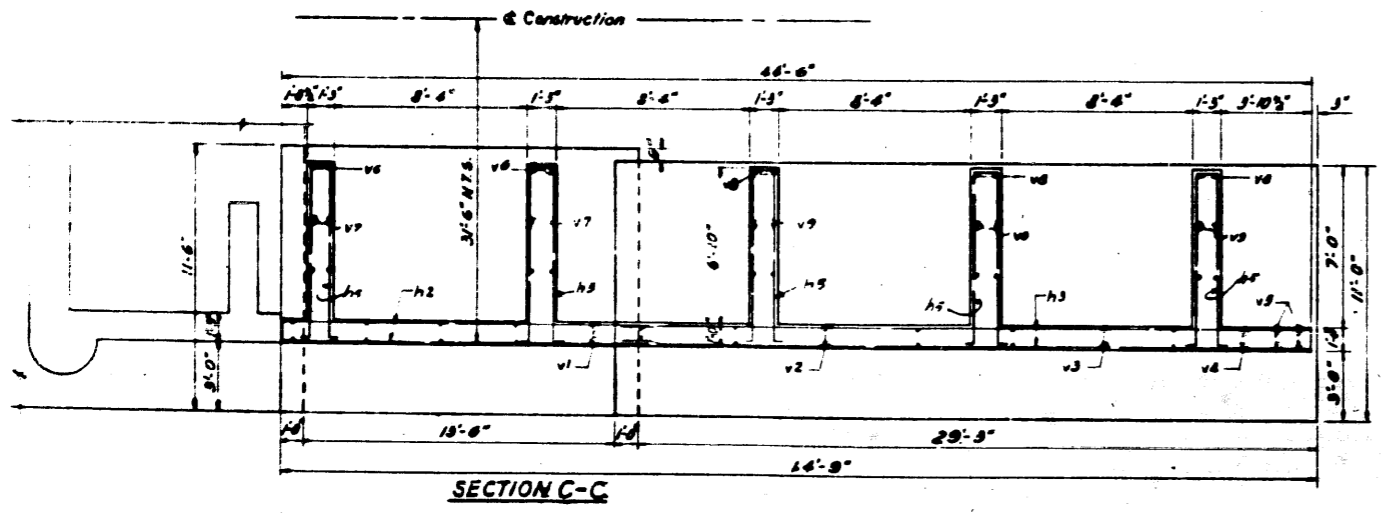


ELEVATION
NORTH EAST RETAINING WALL - AS SHOWN
NORTH WEST RETAINING WALL - OPP. HAND

NOTES:
For General Notes, see Sheet #3.
For Details of setting of dowels for Handrail Posts and Anchor Bolts for Lamp Standards, see Sheet #3.
For Details of Expansion and Construction Joints, see Sheet #16.

BAR SCHEDULE (2 REQ'D)										
Mark	No.	Size	Length	Sketch	Type	A	B	C	D	G
a1	66	5	6-6		Sfr					
a2	8	7	4-6		Sfr					
b1	16	7	23-5		Sfr					
b2	4	7	24-5		Sfr					
b3	20	7	19-5		Sfr					
d1	21	6	0-3		SA					2-40 0-7 2-10
h1	6	9	14-0		Sfr					
h2	31	9	19-9		Sfr					
h3	30	9	29-8		Sfr					
h4	7	9	29-0		Sfr					
h5	53	6	17-0		SA					0-9 7-7 1-0 7-7 0-9
v1	10	9	18-7		Sfr					
v2	6	9	18-9		Sfr					
v3	6	9	18-3		Sfr					
v4	4	9	18-0		Sfr					
v5	4	7	18-0		Sfr					
v6	4	7	13-6		Sfr					
v7	8	6	17-9		Sfr					
v8	6	6	11-6		Sfr					
v9	12	6	13-0		Sfr					

BILL OF MATERIAL (Two Walls)	
Class "X" Concrete	120.8 Cu Yds
Reinforcement Bars	12,025 Lbs



SECTION C-C

REVISIONS		
DATE	BY	DESCRIPTION

DEPARTMENT OF HIGHWAYS
COOK COUNTY, ILLINOIS

JOHN J. SUPPY
DIRECTOR

WILLIAM J. MORTIMER
SUPERVISOR OF HIGHWAYS

NORTH RETAINING WALLS & SIDEWALKS
PARNELL AVENUE GRADE SEPARATION
OVER
SOUTH ROUTE EXPRESSWAY

COMP'D: G.S.M.
DRAWN: P.A.-R.N.S.-M.E.
CHECKED: G.S.M.

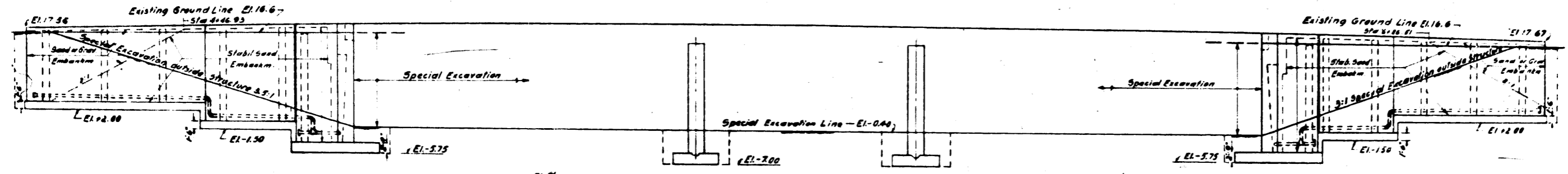
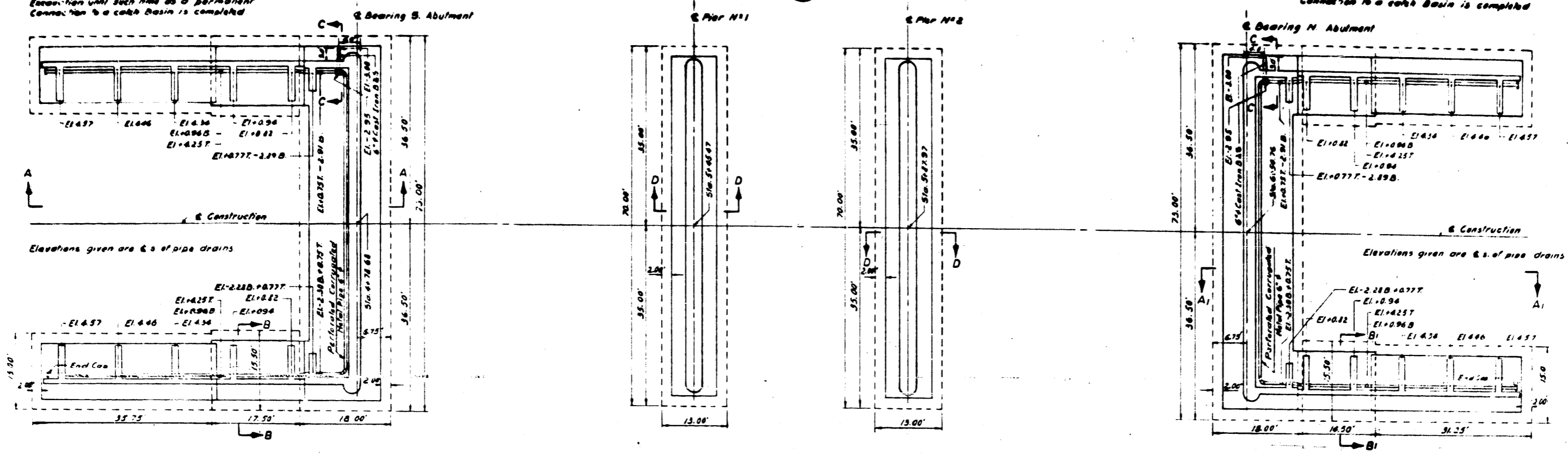
PROJECT: EB1-57-7(301)-358
SCALE: 1/4" = 1'-0"

APPROVED: [Signature]
DATE: [Date]

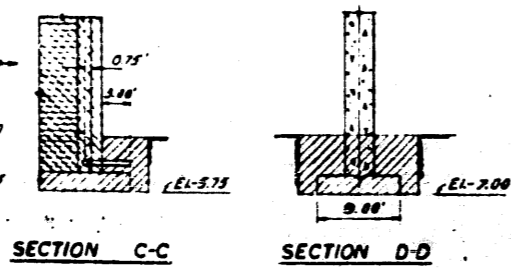
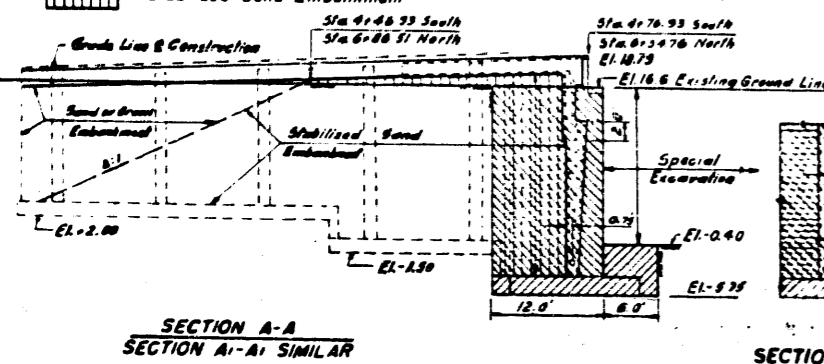
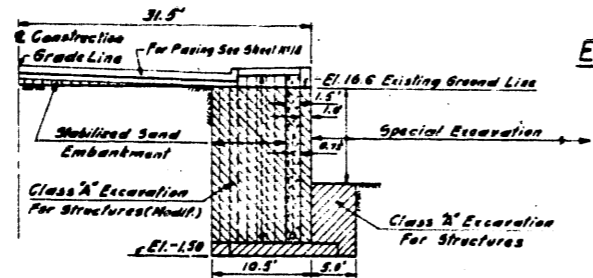
Sheet No.	57
Project No.	068-23239
Drawn	13
Checked	34
Scale	R.583-5

Open end of pipe must have a free outlet in the excavation until such time as a permanent connection to a catch basin is completed

Open end of pipe must have a free outlet in the excavation until such time as a permanent connection to a catch basin is completed



- Class 'A' Excavation
- Class 'A' Excavation (Modified)
- Sand or Gravel Embankment
- Porous Granular Embankment
- Stabilized Sand Embankment



BILL OF MATERIAL		
Class 'A' Excavation for Structures	1,320	Cu. Yds
Class 'A' Excavation for Structures (Modified)	2,165	Cu. Yds
Sand or Gravel Embankment	250	Tons
Porous Granular Embankment	335	Cu. Yds
Corrugated Metal Pipe 6" Dia	390	Lin. Ft.
Stabilized Sand Embankment	1,950	Tons

REVISIONS		
DATE	BY	DESCRIPTION

Notes:
 Class 'A' Excavation for Structures (Modified) shall conform to Section 58 of the Standard Specifications except as indicated on the plans; backfill will be selected and paid for separately. Excess excavated material will be disposed of in accordance with Article 58 of the Standard Specifications. All horizontal pipe to be 6" Perforated Corrugated Metal Pipe unless noted. Vertical Pipe (Risers) to be 6" Corrugated Metal Pipe (not perforated). Cost of furnishing and installing End Caps, 6" Risers, 6" Camp Iron (O.B.S.) 5th Pipe and all fittings shall be paid for at the Contract Unit Price per Lin. Ft. for Corrugated Metal Pipe 6".
 For General Notes see Sheet N13

DEPARTMENT OF HIGHWAYS COOK COUNTY, ILLINOIS	
JOHN J. SHIPP PRESIDENT BOARD OF COMMISSIONERS	WILLIAM J. MORTIMER SUPERVISOR OF HIGHWAYS
EXCAVATION & DRAINAGE PARNELL AVENUE GRADE SEPARATION OVER SOUTH ROUTE EXPRESSWAY	
COMPUTED BY: T.A.	PROJECT: ERI-57-7(30)-358
DRAWN BY: T.A.	SCALE: 1"=10'
CHECKED BY: G.S.M.	APPROVED: [Signature]
APPROVED: [Signature]	DATE: 7/14/61
57	068-23233 C/P
14	34
57	57

SIGN FOR INTERSTATE SYSTEM PROJECT
(FEDERAL, COUNTY AND CITY IN COOPERATION WITH STATE)

INTERSTATE HIGHWAY SYSTEM



3.7 MILES

COST \$ 100,000

FEDERAL-AID FUNDS 85%
U.S. DEPT. OF COMMERCE
BUREAU OF PUBLIC ROADS

COOK COUNTY FUNDS 10% CHICAGO FUNDS 5%
DEPARTMENT OF HIGHWAYS DEPARTMENT OF PUBLIC WORKS

PROJECT BI-90-711, ea

IN COOPERATION WITH STATE OF ILLINOIS
DEPARTMENT OF PUBLIC WORKS AND BUILDINGS
DIVISION OF HIGHWAYS

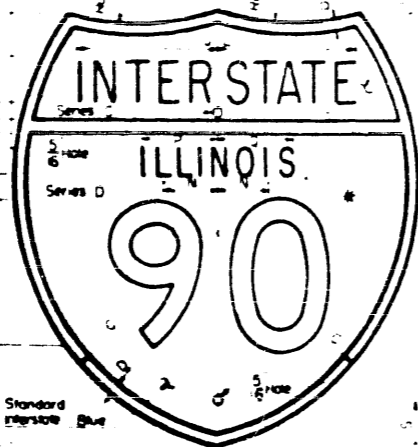
4" x 4" x 14'
Untreated Timber Posts

Notes: Signs shall be made of wood...
Engineer when a contract is awarded

Signs shall be made of wood...
The Contractor shall...
The border shall be black...
Public Roads Administration, Federal Highway Agency, 1952

SHIELD FOR SIGN

Shields shall be made of Aluminum...
ReflectORIZED material shall not be used
Mounting hardware shall be rust proof

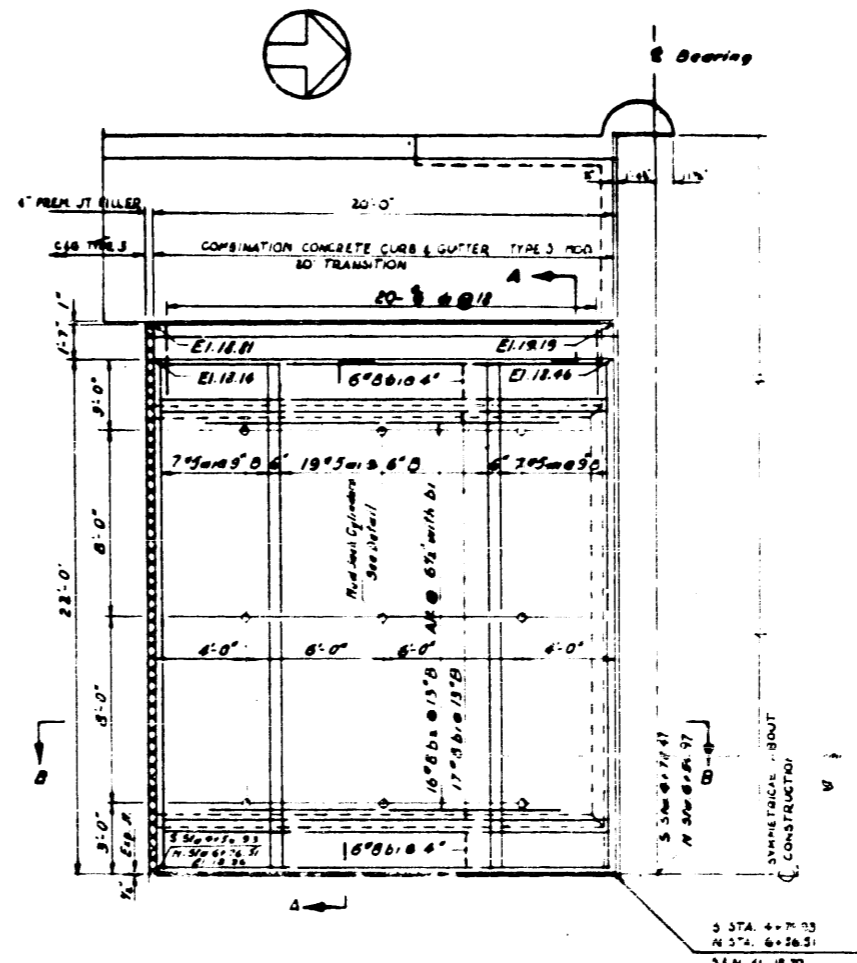


Background, as indicated, Red or Blue...
Letters, numerals, and border, White

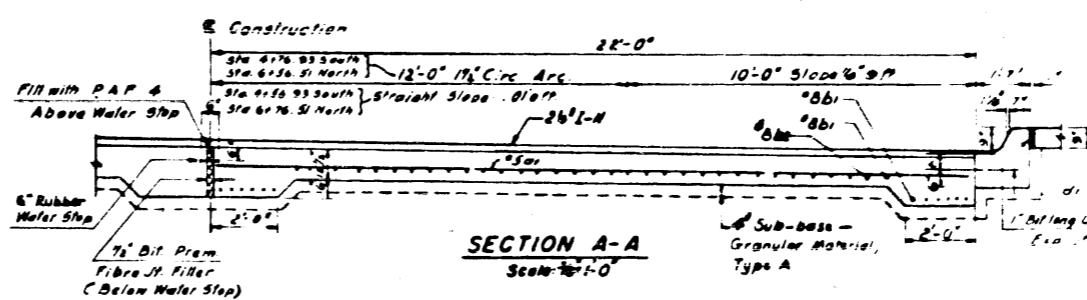
STANDARD 2157-2

NO.	REVISED	A	B	C	D	E	F	G	H	I	J	K	L	M	N	O	P	Q	R	S
1	24	24	2	5	3	2	2	2	2	2	2	2	2	2	2	2	2	2	2	2

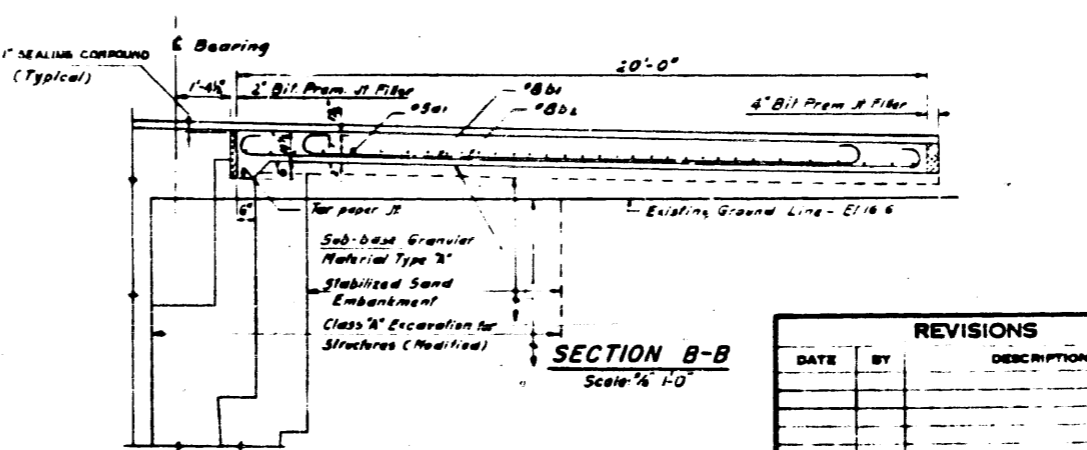
STATE OF ILLINOIS DEPARTMENT OF PUBLIC WORKS AND BUILDINGS DIVISION OF HIGHWAYS		REVISIONS	
PASSED	November 30, 1960	BY	DATE
		W.H.F.	2-11-61
		W.H.F.	4-25-61



PLAN OF SOUTH APPROACH SLABS
Scale: 1/4" = 1'-0"
NORTH APPROACH SLABS OPP HAND



SECTION A-A
Scale: 1/4" = 1'-0"



SECTION B-B
Scale: 1/4" = 1'-0"

72001

BAR SCHEDULE (ALL SLABS)						
BAR NO.	SIZE	LENGTH	SPACING	TYPE	A	B
1	1/2"	21'-0"	12"	1		
2	1/2"	21'-0"	12"	2		
3	1/2"	21'-0"	12"	3		
4	1/2"	21'-0"	12"	4		

BILL OF MATERIAL	
Reinforcement Bars	2154 Lbs
P.C. Concrete Pavement (16'-10 1/2" x 6")	8.97 Sq Yds
Bituminous Materials Prime Coat	20 Gals
Bituminous Concrete Binder Course	5 Tons
Bituminous Concrete Surface Course	10 Tons
Fine Gravel - Graded Aggregate - Type 3	50 Lin Ft
Combination Concrete Curb & Gutter Type 3	60 Sq Ft
Longitudinal Curb Expansion Joint	43 Tons
Sub-base - Granular Material, Type A	43 Tons

Cylinder shall be filled with clay and clay shall be tamped

DETAIL OF MUD JACK CYLINDER
Cylinders shall be installed in 12" dia. 24" Steel Pipe

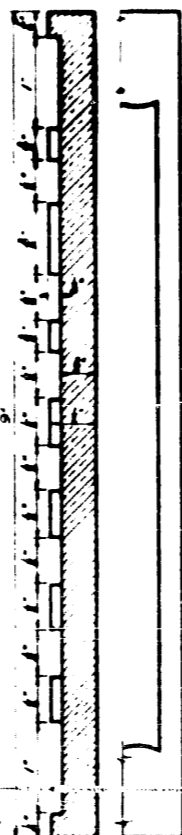
Notes
For General Notes, see Sheet #3.
The Slab shall be paid for at the Contract Unit Price for P.C. Concrete Pavement (16'-10 1/2" x 6").

The modified Type #3 Curb & Gutter shall be paid for at the Contract Unit Price for Combination Concrete Curb and Gutter Type 3.
All Reinforcing Bars, including the Curb and Gutter Dowels, shall be paid for at the Contract Unit Price for Reinforcing Bars.
The Mud Jack Cylinders shall be furnished and installed by the Paving Contractor and included in the Contract Unit Price Bid for P.C. Concrete Pavement (16'-10 1/2" x 6").
The cost of Bit. Prim. Fiber-Jt. Filler shall be included in the Unit Price Bid for P.C. Concrete Pavement.
The 1/2" Bit. Prim. Fiber-Jt. Filler between the back of the Curb and Sidewalk will be paid for at the Contract Unit Price per sq ft. of Longitudinal Curb Expansion Joint.
The cost of the For Paper Joint and Sealing Compound shall be included in the Unit Price Bid for P.C. Concrete Pavement (16'-10 1/2" x 6").

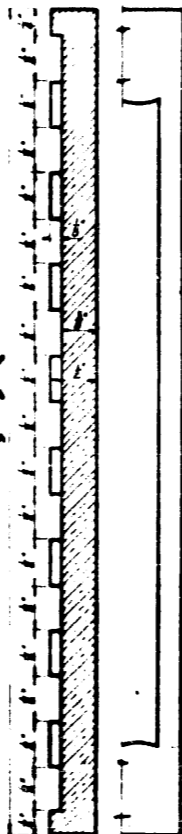
DEPARTMENT OF HIGHWAYS COOK COUNTY ILLINOIS		APPROVED	
APPROACH SLABS PARNELL AVENUE GRADE SEPARATION OVER SOUTH ROUTE EXPRESSWAY		APPROVED	
COMPUTED BY T.A. - M.E.	PROJECT NO. 57-7-5A-35-9	DATE	SCALE
CHECKED BY G.S. - M.E.	SCALE AS SHOWN	DATE	SCALE
APPROVED BY [Signature]	DATE	DATE	SCALE

REVISIONS		
DATE	BY	DESCRIPTION

BUILT BY
COUNTY OF COOK
 WITH THE CO-OPERATION OF
CITY OF CHICAGO
STATE OF ILLINOIS
FEDERAL GOVERNMENT
 19XX



NAME EXPRESSWAY
 AT
 NAME OF ROAD
 F.A.I. ROUTE X SEC. XXX-XXXXX-XXX
 PROJECT X-XX-X(XX)
 STATION XXX+XX
 LOADING H20-S16-44
 19XX



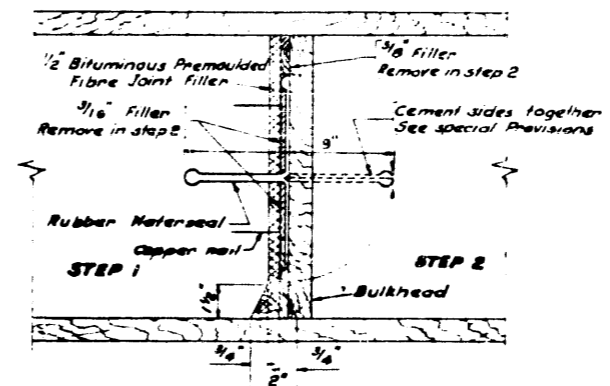
Center of 3" curvier sunk hole:
 for bolts when required
 The Name Plate shall be embedded in the
 concrete so that the face of the Name Plate
 is flush with the surface of the concrete

Notes
 Plates shall be furnished and installed as specified
 in Section 61 of the Standard Specifications for Road
 and Bridge Construction adopted Jan 2, 1958 and as
 shown on the plans
 Detailed plans of plate and lettering will be furnished
 the Contractor after contract is awarded
 Material - Best quality brass or bronze - Border &
 Letters - 8/16 inch square cut and not tapered Top
 surface polished

COUNTY OF COOK DEPARTMENT OF HIGHWAYS				
NAME PLATES				
County Highway	From Year	To Year	Sheet No.	Total Sheets
068	95	16	14	14

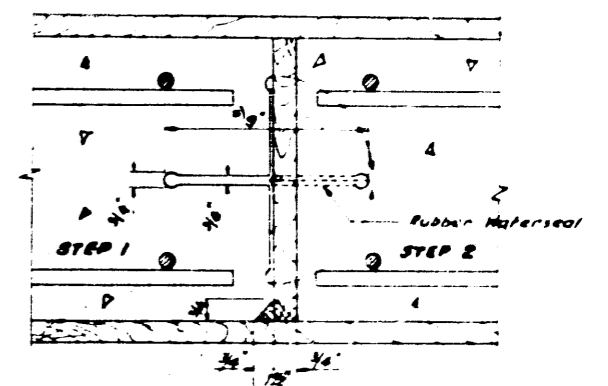
STANDARD SYMBOLS

	STATE LINE		DIRECTION OF FLOW IN DITCH
	COUNTY LINE		SUMMIT OF DITCH
	SECTION, TOWNSHIP, OR GRANT LINE		EXISTING INLET, ADJUST (A), RECONSTRUCT (R)
	TRAVERSE LINE		INLET TO BE CONSTRUCTED
	CITY, OR VILLAGE LIMITS		INLET TO BE FILLED
	RAILROAD, OR UTILITY TRACKS		EXISTING CATCH BASIN, ADJUST (A), RECONSTRUCT (R)
	PROPOSED PROFILE		CATCH BASIN TO BE CONSTRUCTED
	FENCE (BARBED WIRE)		CATCH BASIN TO BE FILLED
	FENCE (NO DISTINCTION)		EXISTING MANHOLE, ADJUST (A), RECONSTRUCT (R)
	R.O.W. PROPOSED		MANHOLE TO BE CONSTRUCTED
	EXISTING PROPERTY OR R.O.W. LINE		MANHOLE TO BE FILLED
	GUARD POSTS		INLET TO BE CONSTRUCTED
	STREAM		CATCH BASIN TO BE CONSTRUCTED
	MARSH		MANHOLE TO BE CONSTRUCTED
	TREES (SIZE INDICATED)		MANHOLE TO BE FILLED
	HEDGES		INLET TO BE CONSTRUCTED
	SECTION CORNER		CATCH BASIN TO BE CONSTRUCTED
	GUARD RAIL		MANHOLE TO BE CONSTRUCTED
	CENTER LINE OF CONSTRUCTION		MANHOLE TO BE FILLED
	CONSTRUCTION JOINT		INLET TO BE CONSTRUCTED
	TRAVELED WAY		CATCH BASIN TO BE CONSTRUCTED
	CONTRACTION JOINT		MANHOLE TO BE CONSTRUCTED
	LONGITUDINAL METAL JOINT		MANHOLE TO BE FILLED
	VALVE VAULT (V), METER VAULT (M), HAND HOLE (H)		INLET TO BE CONSTRUCTED
	HOUSE METER VAULT		CATCH BASIN TO BE CONSTRUCTED
	FIRE HYDRANT		MANHOLE TO BE CONSTRUCTED
	LIGHT STANDARD		MANHOLE TO BE FILLED
	TRAFFIC SIGNAL		INLET TO BE CONSTRUCTED
	DRAFTING SIGN		CATCH BASIN TO BE CONSTRUCTED
	BUFFALO BOX (GAS OR WATER SHUT-OFF)		MANHOLE TO BE CONSTRUCTED
	TROLLEY POLE		MANHOLE TO BE FILLED
	TELEPHONE OR TELEGRAPH POLE		INLET TO BE CONSTRUCTED
	POWER LINE POLE		CATCH BASIN TO BE CONSTRUCTED
	R.O.W. MARKER		MANHOLE TO BE CONSTRUCTED



EXPANSION JOINT

NOTE - Pre-anchored Joint Filler anchored to concrete with 4" barbed copper nails 18" oc.



UNBONDED CONSTRUCTION JOINT - As shown.

BONDED CONSTR. JOINT

Use 6" Rubber Water Seal for Bonded Constr. Joints in Hoops under 15 inches thick.

COUNTY OF COOK DEPARTMENT OF HIGHWAYS			
STANDARD DETAILS OF EXPANSION & CONSTRUCTION JOINTS			
COMPUTED	APPROVED		
JOHN J. CHIFFY			
DRAWN			
CHIEF			

Rev 3-17-59 JAW
 REVISED 9-59