

STATE OF ILLINOIS
DEPARTMENT OF TRANSPORTATION

F.A. RATE.	SECTION	COUNTY	TOTAL SHEETS	SHEET NO.
VAR.	FAI 290 22 PF	COOK	15	1
		ILLINOIS	CONTRACT NO. 62R59	

FOR INDEX OF SHEETS, SEE SHEET NO. 2

THIS PROJECT IS LOCATED WITHIN THE CITY OF ROLLING MEADOWS AND THE VILLAGE OF HILLSIDE

PROPOSED
HIGHWAY PLANS

LOCATION 1: I-90 WB TO IL 53 NB RAMP
LOCATION 2: I-290 NB TO I-90 EB RAMP
LOCATION 3: I-290 EB NEAR I-88
SECTION: FAI 290 (I-290) / FAP 342 (IL 53)

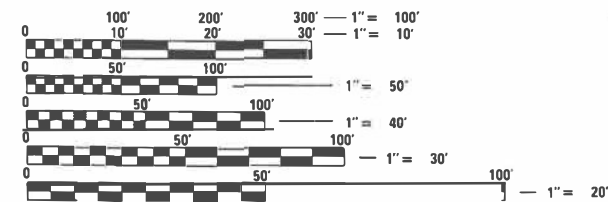
PROJECT: HSIP-VOAL(088)
PAVEMENT FRICTION (HFST AND DIAMOND GROOVING)
COOK COUNTY

TRAFFIC DATA:

LOCATION 1: I-90 WB TO IL 53 NB RAMP
2021 ADT = 8,700
SPEED LIMIT = 35 MPH

LOCATION 2: I-290 NB TO I-90 EB RAMP
2021 ADT = 8,200
SPEED LIMIT = 25 MPH

LOCATION 3: I-290 EB NEAR I-88
2021 ADT = 65,400
SPEED LIMIT = 55 MPH



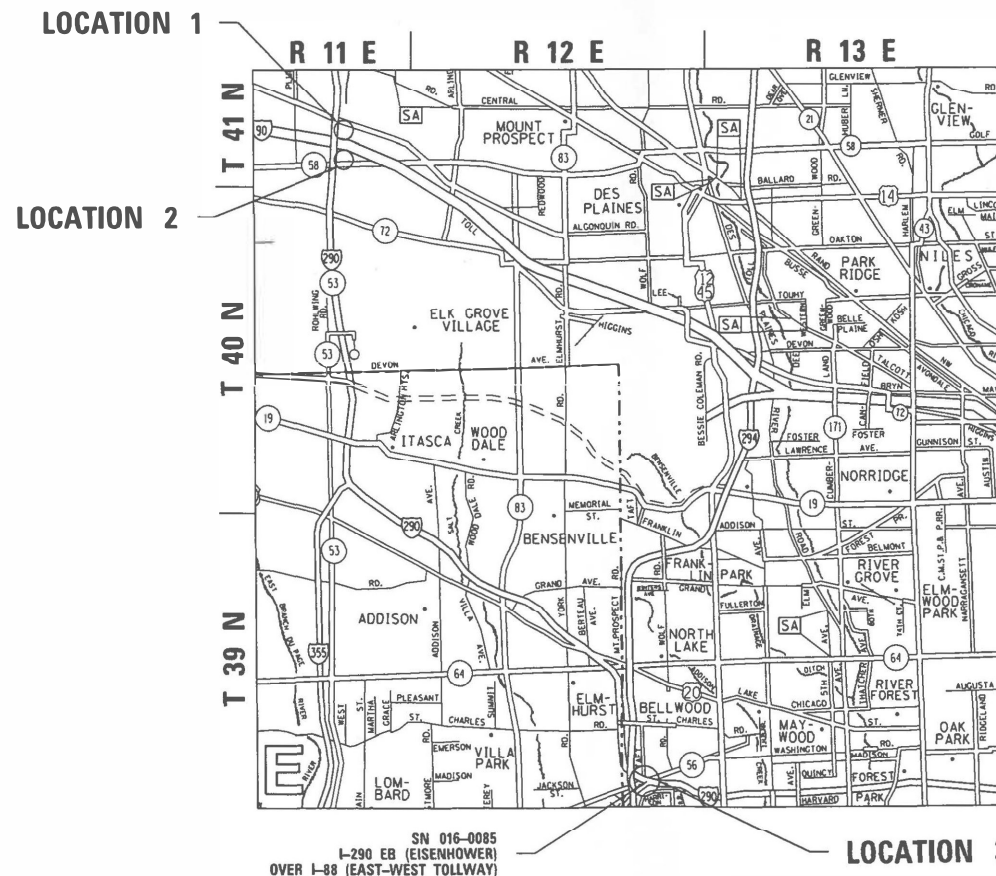
FULL SIZE PLANS HAVE BEEN PREPARED USING STANDARD ENGINEERING SCALES. REDUCED SIZED PLANS WILL NOT CONFORM TO STANDARD SCALES. IN MAKING MEASUREMENTS ON REDUCED PLANS, THE ABOVE SCALES MAY BE USED.

J.U.L.I.E.
JOINT UTILITY LOCATION INFORMATION FOR EXCAVATORS
1-800-892-0123
OR 811

PROJECT ENGINEER: DAN WILGREEN (847) 705-4240
PROJECT MANAGER: FAWAD AQUEEL

CONTRACT NO. 62R59

C-91-207-22



SN 016-0085
I-290 EB (EISENHOWER)
OVER I-88 (EAST-WEST TOLLWAY)

LOCATION 3

GROSS & NET LENGTH = 4,377 FT. = 0.83 MILES



LOCATION OF SECTION INDICATED THIS: -

STATE OF ILLINOIS
DEPARTMENT OF TRANSPORTATION

SUBMITTED MAY 3 20 23
[Signature] REGIONAL ENGINEER
June 30, 2023
[Signature] ENGINEER OF DESIGN AND ENVIRONMENT
June 30, 2023
[Signature] DIRECTOR OF HIGHWAYS PROJECT IMPLEMENTATION

PRINTED BY THE AUTHORITY
OF THE STATE OF ILLINOIS

INDEX OF SHEETS

HIGHWAY STANDARDS

GENERAL NOTES

SHEET NO.	DESCRIPTION	STANDARD NO.	DESCRIPTION
1	COVER SHEET	000001-08	STANDARD SYMBOLS, ABBREVIATIONS AND PATTERNS
2	INDEX OF SHEETS, HIGHWAY STANDARDS, GENERAL NOTES, AND HMA MIXTURE REQUIREMENTS	442201-03	CLASS C AND D PATCHES
3	SUMMARY OF QUANTITIES	642006-01	SHOULDER RUMBLE STRIPS, 8 IN.
4	EXISTING AND PROPOSED TYPICAL SECTIONS	701400-11	APPROACH TO LANE CLOSURE, FREEWAY/EXPRESSWAY
5-7	EXISTING AND PROPOSED ROADWAY PLANS	701401-13	LANE CLOSURE, FREEWAY/EXPRESSWAY
8	TC-08: ENTRANCE RAMP AND CLOSURE DETAILS	701411-09	LANE CLOSURE, MULTILANE, AT ENTRANCE OR EXIT RAMP, FOR SPEEDS >= 45 MPH
9	TC-09: TRAFFIC CONTROL DETAILS FOR FREEWAY SINGLE AND MULTI-LANE WEAVE	701428-01	TRAFFIC CONTROL, SETUP AND REMOVAL, FREEWAY/EXPRESSWAY
10-11	TC-12: MULTI-LANE FREEWAY PAVEMENT MARKING DETAILS	701446-11	TWO LANE CLOSURE, FREEWAY/EXPRESSWAY
12	TC-13: DISTRICT ONE TYPICAL PAVEMENT MARKINGS	701901-08	TRAFFIC CONTROL DEVICES
13	TC-17: TRAFFIC CONTROL DETAILS FOR FREEWAY SHOULDER CLOSURES AND PARTIAL RAMP CLOSURES	780001-05	TYPICAL PAVEMENT MARKINGS
14	TC-18: FREEWAY/EXPRESSWAY SIGNING FOR FLAGGING OPERATIONS AT WORK ZONE OPENINGS ON FREEWAYS/EXPRESSWAYS		
15	TC-25: TRAFFIC CONTROL DETAILS FOR FREEWAY CENTER LANE CLOSURE SHOULDER LANE		

- BEFORE STARTING ANY EXCAVATION, THE CONTRACTOR SHALL CALL "J.U.L.I.E." AT (800) 892-0123 OR 811 FOR FIELD LOCATIONS OF BURIED ELECTRIC, TELEPHONE AND GAS UTILITIES. 48 HOUR NOTIFICATION IS REQUIRED.
- THE CONTRACTOR SHALL COORDINATE CONSTRUCTION ACTIVITIES WITH UTILITY COMPANIES, THE CITY OF ROLLING MEADOWS AND THE VILLAGE OF HILLSIDE.
- THE CONTRACTOR WILL NOT BE ALLOWED TO SET UP A YARD OR FIELD OFFICE ON STATE PROPERTY (OR TOLLWAY) WITHOUT WRITTEN PERMISSION FROM THE DEPARTMENT (OR ISTHA).
- ALL DAMAGE TO EXISTING PAVEMENT MARKINGS OR RAISED REFLECTIVE PAVEMENT MARKERS OUTSIDE THE REMOVAL LINE SHOWN ON THE PLANS SHALL BE REPLACED AT NO ADDITIONAL COST TO THE DEPARTMENT.
- BEFORE BEGINNING ANY WORK, THE CONTRACTOR SHALL RETAIN AND RECORD FOR FUTURE REFERENCE, ALL EXISTING PAVEMENT MARKING LINES (AND RAISED REFLECTIVE PAVEMENT MARKERS) IN ORDER THAT THESE LOCATIONS CAN BE RE-ESTABLISHED FOR STRIPING. EXACT LOCATIONS OF ALL PAVEMENT MARKINGS SHALL BE AS SHOWN ON THE PLANS OR AS DIRECTED BY THE ENGINEER.
- ALL PAVEMENT PATCHING LOCATIONS AT LOCATION 1: I-90 WB TO IL 53 NB RAMP AND LOCATION 2: I-290 NB TO I-90 EB RAMP SHALL BE DETERMINED IN THE FIELD BY THE ENGINEER.
- IT SHALL BE THE CONTRACTOR'S RESPONSIBILITY TO VERIFY ALL DIMENSIONS AND CONDITIONS EXISTING IN THE FIELD PRIOR TO CONSTRUCTION AND ORDERING OF MATERIALS.
- FRAMES AND GRATES ADJUSTMENT OF PRIVATE UTILITIES WITHIN THE LIMITS OF THE IMPROVEMENTS SHALL BE DONE BY THEIR RESPECTIVE OWNERS AND ARE NOT PART OF THIS CONTRACT.
- THE CONTRACTOR SHALL CONTACT THE DISTRICT ONE TRAFFIC CONTROL SUPERVISOR AT (847)705-4151 AND THE ISTHA DAILY TRAFFIC CONTROL AUTHORIZATION AT (630)241-6800 EXT. 3822 (FOR TOLLWAYS) A MINIMUM OF 72 HOURS IN ADVANCE OF BEGINNING OF WORK.
- THE CONTRACTOR SHALL BE REQUIRED TO PROVIDE ACCESS TO ABUTTING PROPERTY AT ALL TIMES DURING THE CONSTRUCTION OF THIS PROJECT.
- EXISTING BROKEN FRAMES AND LIDS SHALL BE REMOVED AND DISPOSED OF BY THE CONTRACTOR AND SHALL BE REPLACED AS DIRECTED BY THE ENGINEER. REPLACEMENT FRAMES AND LIDS WILL BE PAID FOR ACCORDING TO ARTICLE 109.04 OF THE STANDARD SPECIFICATIONS UNLESS A SEPARATE PAY ITEM HAS BEEN PROVIDED.
- DO NOT SCALE PLANS FOR CONSTRUCTION DIMENSIONS.
- PAVEMENT MARKING TAPE, TYPE III SHALL BE USED FOR SHORT TERM PAVEMENT MARKINGS ON ALL FINAL SURFACES.
- OVERNIGHT LANE CLOSURES SHALL NOT BE ALLOWED FOR REHABILITATION PROJECTS INVOLVING DAYTIME MILLING AND RESURFACING OPERATIONS AND CLASS D PATCHING UNLESS OTHER CONDITIONS WARRANT EXTENDED LANE CLOSURES AS DETERMINED AND APPROVED IN WRITING BY THE ENGINEER OR AS PROVIDED FOR IN THE CONTRACT SPECIFICATIONS.
- DIAMOND GROOVING LIMITS DO NOT INCLUDE GORE AREAS OR SHOULDERS.
- THE RESIDENT ENGINEER SHALL CONTACT MICHAEL PALELLO (MICHAEL.PALELLO@ILLINOIS.GOV) , AREA TRAFFIC FIELD ENGINEER. A MINIMUM OF 2 WEEKS PRIOR TO PLACEMENT OF PERMANENT PAVEMENT MARKINGS.
- THE CONTRACTOR SHALL USE CARE WHEN PAVEMENT GROOVING NEAR ANY EXISTING ITEMS WHICH WILL REMAIN. ANY DAMAGE DONE BY THE CONTRACTOR TO EXISTING ITEMS TO REMAIN, INCLUDING PAVEMENT MARKINGS, LOOPS, AND SENSORS, SHALL BE REPLACED AT THE CONTRACTOR'S EXPENSE.
- THE CONTRACTOR SHALL BE RESPONSIBLE FOR THE NOTIFICATION OF ALL EMERGENCY SERVICES, SCHOOL DISTRICTS, I.D.O.T.'S COMMUNICATIONS CENTER, SPRINGFIELD TRUCK PERMIT SECTION AND OTHER AGENCIES AFFECTED BY THE CLOSURE. THE CONTRACTOR SHALL ALSO BE RESPONSIBLE FOR POSTING SIGNS THAT WILL INDICATE THE DATES THE CLOSURE WILL BE IN PLACE.
- THE PATCH WIDTH FOR LONGITUDINAL PARTIAL DEPTH PATCHING SHALL BE 3 FEET.

HMA MIXTURE REQUIREMENTS				
LOCATION	MIXTURE USES	MIXTURE TYPE	AIR VOIDS @ Ndes	QUALITY MANAGEMENT PROGRAM (QMP)
LOCATION 1: I-90 WB TO IL 53 NB RAMP LOCATION 2: I-290 NB TO I-90 EB RAMP	CLASS D PATCHES	HMA BINDER IL-19.0 mm; 14"	4% @ 70 GYR	QC/QA
LOCATION 1: I-90 WB TO IL 53 NB RAMP LOCATION 2: I-290 NB TO I-90 EB RAMP	LONGITUDINAL PARTIAL DEPTH PATCHING	HMA SURFACE COURSE, MIX "D", IL-9.5, N70: 2"	4% @ 70 GYR	QC/QA
QMP DESIGNATION: QUALITY CONTROL/QUALITY ASSURANCE (QC/QA)				

NOTE 1: THE UNIT WEIGHT USED TO CALCULATE ALL HMA SURFACE MIXTURE QUANTITIES IS 112 LBS/SQ YD/IN.
 NOTE 2: THE "AC TYPE" FOR POLYMERIZED HMA MIXES SHALL BE "SBS/SBR PG 76 -22" AND FOR NON-POLYMERIZED HMA THE "AC TYPE" SHALL BE "PG 64 -22" UNLESS MODIFIED BY RECLAIMED MATERIALS SPECIFICATIONS.

MODEL: Default
 FILE NAME: p:\bullet\dot\paw\benefy.com\FW\DOT\Documents\DOT Office\District 1\Project\I-90 WB Ramp\CADD\Drawings\Design\90-shr-gemnotes.dgn

USER NAME = Farnan,Tariq	DESIGNED -	REVISED -
	DRAWN -	REVISED -
PLOT SCALE = 100,0000 ' / in.	CHECKED -	REVISED -
PLOT DATE = 5/9/2023	DATE -	REVISED -

**STATE OF ILLINOIS
DEPARTMENT OF TRANSPORTATION**

INDEX OF SHEETS, HWY STDS, GEN. NOTES, AND HMA MIX REQS			
I-90 WB TO IL 53 NB RAMP, I-290 NB TO I-90 EB RAMP, AND I-290 EB NEAR I-88			
SCALE:	SHEET	OF	SHEETS
	STA.	TO	STA.

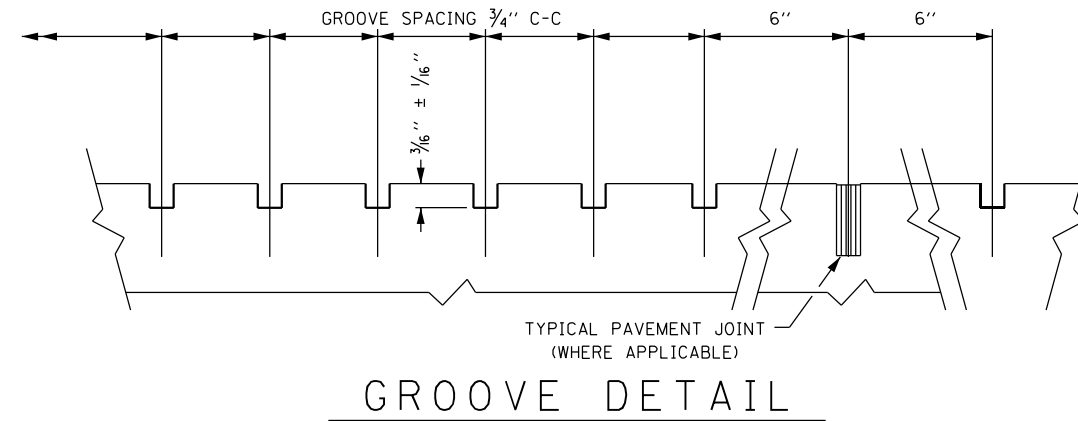
F.A. RTE.	SECTION	COUNTY	TOTAL SHEETS	SHEET NO.
VAR.	FAI 290 22 PF	COOK	15	2
ILLINOIS FED. AID PROJECT				
CONTRACT NO. 62R59				

SUMMARY OF QUANTITIES			TOTAL QUANTITIES	CONSTRUCTION TYPE CODE					
CODE NO	ITEM	UNIT		90% FED 10% STATE 0021					
44201815	CLASS D PATCHES, TYPE II, 14 INCH	SO YD	50	50					
44201819	CLASS D PATCHES, TYPE III, 14 INCH	SO YD	125	125					
44201821	CLASS D PATCHES, TYPE IV, 14 INCH	SO YD	125	125					
64200108	SHOULDER RUMBLE STRIPS, 8 INCH	FOOT	1000	1000					
67100100	MOBILIZATION	L SUM	1	1					
70200100	NIGHTTIME WORK ZONE LIGHTING	L SUM	1	1					
70300150	SHORT TERM PAVEMENT MARKING REMOVAL	SO FT	2388	2388					
70300221	TEMPORARY PAVEMENT MARKING - LINE 4" - PAINT	FOOT	4312	4312					
70300251	TEMPORARY PAVEMENT MARKING - LINE 8" - PAINT	FOOT	296	296					
70303120	TEMPORARY PAVEMENT MARKING - LINE 4" - MODIFIED URETHANE	FOOT	1940	1940					
70303140	TEMPORARY PAVEMENT MARKING - LINE 8" - MODIFIED URETHANE	FOOT	160	160					
70306120	TEMPORARY PAVEMENT MARKING - LINE 4" - TYPE III TAPE	FOOT	6252	6252					
70306140	TEMPORARY PAVEMENT MARKING - LINE 8" - TYPE III TAPE	FOOT	456	456					
* 78000200	THERMOPLASTIC PAVEMENT MARKING - LINE 4"	FOOT	4312	4312					

SUMMARY OF QUANTITIES			TOTAL QUANTITIES	CONSTRUCTION TYPE CODE					
CODE NO	ITEM	UNIT		90% FED 10% STATE 0021					
* 78000500	THERMOPLASTIC PAVEMENT MARKING - LINE 8"	FOOT	296	296					
* 78009000	MODIFIED URETHANE PAVEMENT MARKING - LETTERS AND SYMBOLS	SO FT	72.8	72.8					
* 78009004	MODIFIED URETHANE PAVEMENT MARKING - LINE 4"	FOOT	2963	2963					
* 78009005	MODIFIED URETHANE PAVEMENT MARKING - LINE 5"	FOOT	256	256					
* 78009008	MODIFIED URETHANE PAVEMENT MARKING - LINE 8"	FOOT	1379	1379					
78300202	PAVEMENT MARKING REMOVAL - WATER BLASTING	SO FT	4025	4025					
X0327693	HIGH FRICTION SURFACE TREATMENT	SO YD	5969	5969					
X4405020	LONGITUDINAL PARTIAL DEPTH REMOVAL 2"	FOOT	1800	1800					
X4420900	LONGITUDINAL PARTIAL DEPTH PATCHING	TON	68	68					
X4510050	HIGH FRICTION SURFACE TREATMENT CRACK FILLING	FOOT	5399	5399					
X6700407	ENGINEER'S FIELD OFFICE, TYPE A (D1)	CAL MO	6	6					
X7011015	TRAFFIC CONTROL AND PROTECTION (EXPRESSWAYS)	L SUM	1	1					
Z0037300	PAVEMENT GROOVING	SO YD	3640	3640					
* SPECIALTY ITEM									

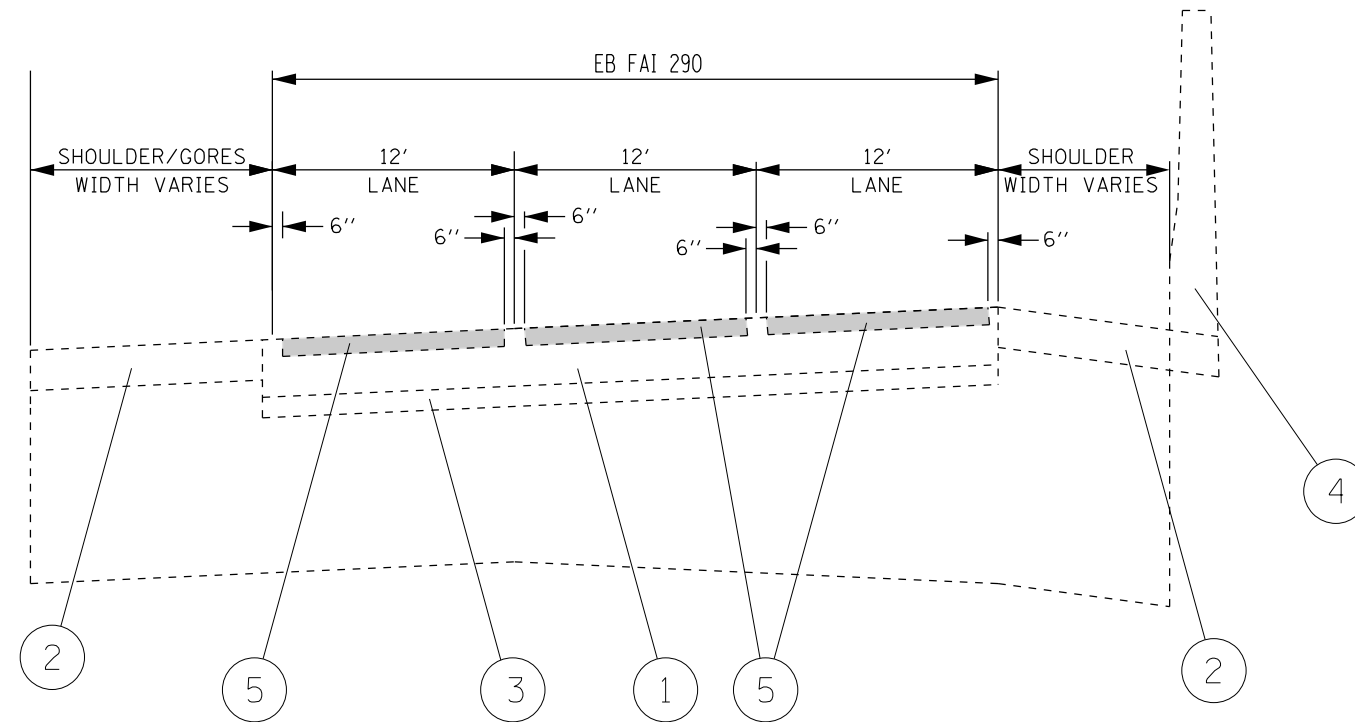
NOTES

- 1.) TYPICAL CROSS SECTION AND GROOVE DETAIL IS FOR INFORMATION ONLY. TYPICAL SECTION VARIES THROUGHOUT IMPROVEMENT AREA.
- 2.) REFER TO THE "PAVEMENT GROOVING" SPECIAL PROVISION.
- 3.) THE PAVEMENT GROOVING PATTERN SHOULD BE 1/8 INCH WIDE AND 3/16 INCH ± 1/16 INCH DEEP AT 3/4 INCH CENTERS.
- 4.) PROPOSED PAVEMENT GROOVING (SEE GROOVE DETAIL)
- 5.) PAVEMENT GROOVING LIMITS DO NOT INCLUDE GORE AREAS OR SHOULDERS.
- 6.) SUCCESSIVE PASSES OF THE GROOVING MACHINE SHALL NOT OVERLAP.
- 7.) THE CONTRACTOR SHALL MAINTAIN THE EXISTING CROSS SLOPES.



LEGEND

- ① EXISTING CONTINUOUSLY REINFORCED CONCRETE PAVEMENT
- ② EXISTING PC CONCRETE SHOULDER
- ③ EXISTING STABILIZED SUB-BASE
- ④ EXISTING PC CONCRETE BARRIER WALL, WIDTH VARIES
- ⑤ PROPOSED PAVEMENT GROOVING (SEE GROOVE DETAIL)



MODEL: Default
 FILE: \\nafe\p\subect-pw-bead\p\com\PIV\DOT\Documents\DOT Office\Dir\rdet_1\Project\I-90 WB Ramp\CADD\Draw\Design\I-90-eh-zyp\cal.dgn

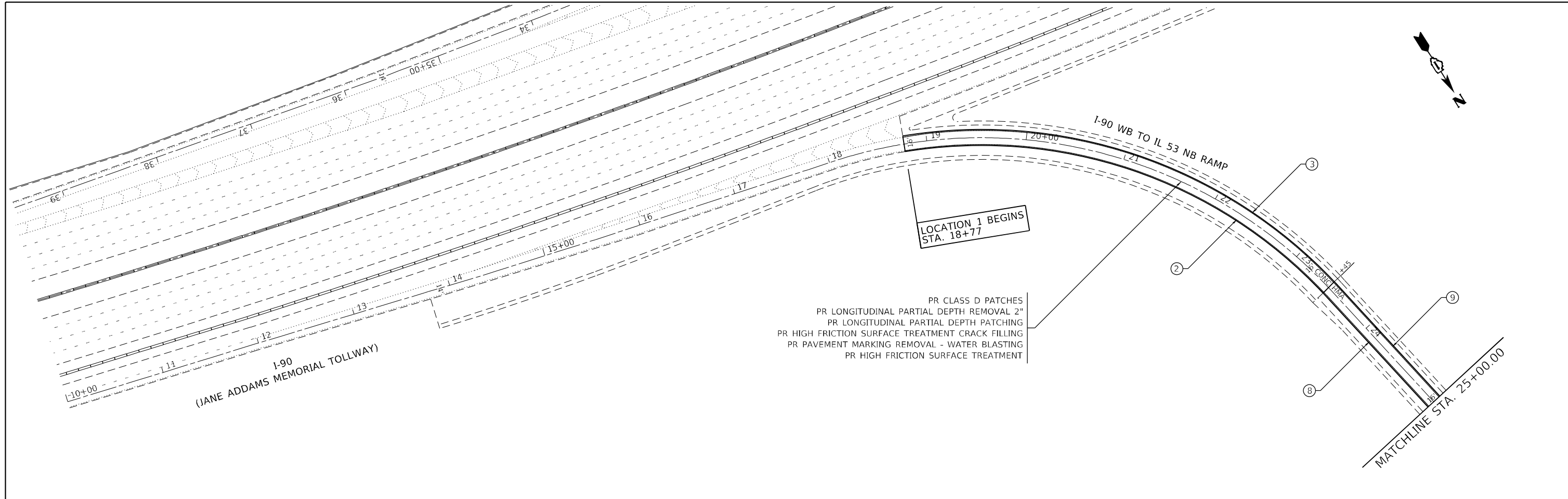
USER NAME = Farman,Tariq	DESIGNED -	REVISED -
	DRAWN -	REVISED -
PLOT SCALE = 100,0000' / in.	CHECKED -	REVISED -
PLOT DATE = 5/8/2023	DATE -	REVISED -

**STATE OF ILLINOIS
DEPARTMENT OF TRANSPORTATION**

**EXISTING AND PROPOSED TYPICAL SECTIONS
LOCATION 3: I-290 EB NEAR I-88**

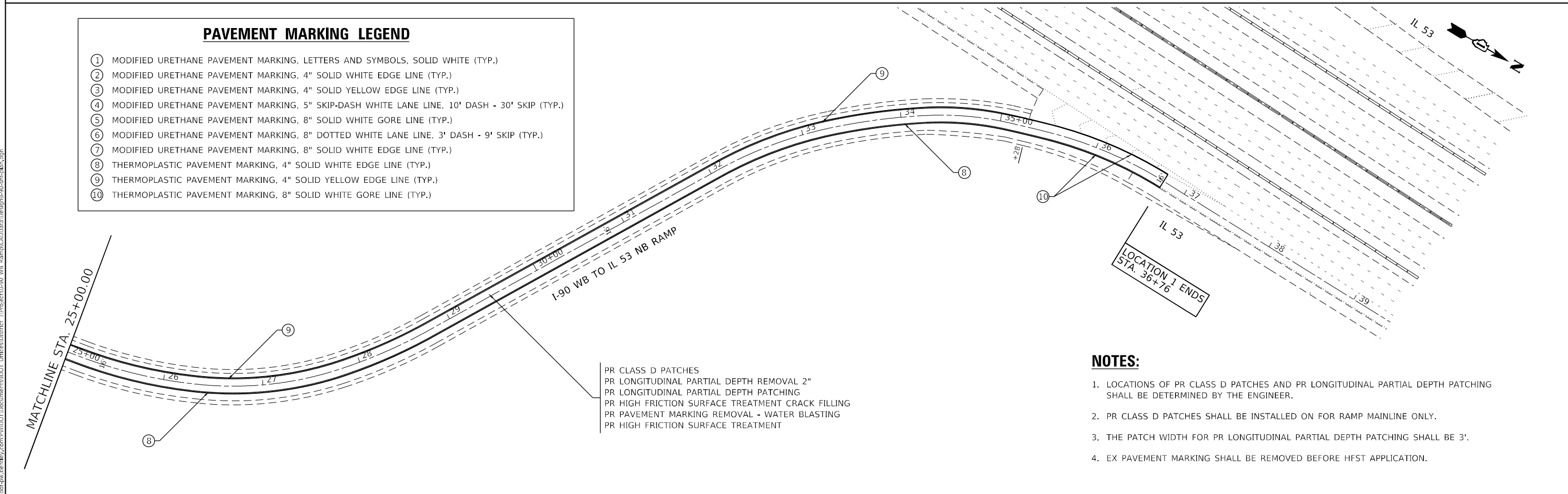
SCALE: SHEET OF SHEETS STA. TO STA.

F.A. RTE.	SECTION	COUNTY	TOTAL SHEETS	SHEET NO.
VAR.	FAI 290 22 PF	COOK	15	4
			CONTRACT NO. 62R59	
		ILLINOIS FED. AID PROJECT		



PAVEMENT MARKING LEGEND

①	MODIFIED URETHANE PAVEMENT MARKING, LETTERS AND SYMBOLS, SOLID WHITE (TYP.)
②	MODIFIED URETHANE PAVEMENT MARKING, 4" SOLID WHITE EDGE LINE (TYP.)
③	MODIFIED URETHANE PAVEMENT MARKING, 4" SOLID YELLOW EDGE LINE (TYP.)
④	MODIFIED URETHANE PAVEMENT MARKING, 5" SKIP-DASH WHITE LANE LINE, 10' DASH - 30' SKIP (TYP.)
⑤	MODIFIED URETHANE PAVEMENT MARKING, 8" SOLID WHITE GORE LINE (TYP.)
⑥	MODIFIED URETHANE PAVEMENT MARKING, 8" DOTTED WHITE LANE LINE, 3' DASH - 9' SKIP (TYP.)
⑦	MODIFIED URETHANE PAVEMENT MARKING, 8" SOLID WHITE EDGE LINE (TYP.)
⑧	THERMOPLASTIC PAVEMENT MARKING, 4" SOLID WHITE EDGE LINE (TYP.)
⑨	THERMOPLASTIC PAVEMENT MARKING, 4" SOLID YELLOW EDGE LINE (TYP.)
⑩	THERMOPLASTIC PAVEMENT MARKING, 8" SOLID WHITE GORE LINE (TYP.)



NOTES:

1. LOCATIONS OF PR CLASS D PATCHES AND PR LONGITUDINAL PARTIAL DEPTH PATCHING SHALL BE DETERMINED BY THE ENGINEER.
2. PR CLASS D PATCHES SHALL BE INSTALLED ON FOR RAMP MAINLINE ONLY.
3. THE PATCH WIDTH FOR PR LONGITUDINAL PARTIAL DEPTH PATCHING SHALL BE 3'.
4. EX PAVEMENT MARKING SHALL BE REMOVED BEFORE HFST APPLICATION.

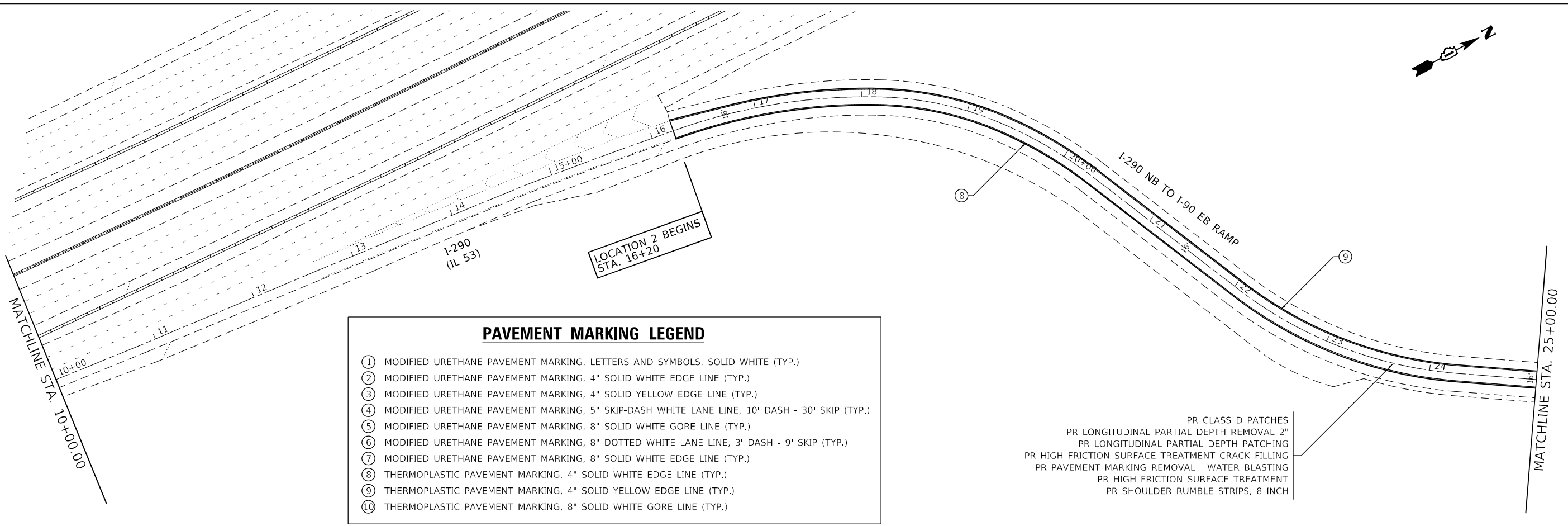
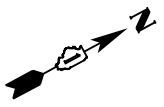
MODEL: Default
 FILE NAME: p:\iludct-pw-bentley.com\p\iludot\Documents\DOT Office\Dir\rdct_1\Project\I-90 WB Ramp\CAD\Drawings\Design\1-90-ahs-bbs.dgn

USER NAME = Farnan,Tariq	DESIGNED -	REVISED -
PLOT SCALE = 100,0000' / in.	DRAWN -	REVISED -
PLOT DATE = 5/9/2023	CHECKED -	REVISED -
	DATE -	REVISED -

**STATE OF ILLINOIS
DEPARTMENT OF TRANSPORTATION**

EXISTING AND PROPOSED ROADWAY PLAN	
LOCATION 1: I-90 WB TO IL 53 NB RAMP	
SCALE: 1"=50'	SHEET OF SHEETS STA. TO STA.

F.A. RTE.	SECTION	COUNTY	TOTAL SHEETS	SHEET NO.
VAR.	FAI 290 22 PF	COOK	15	5
ILLINOIS FED. AID PROJECT			CONTRACT NO. 62R59	

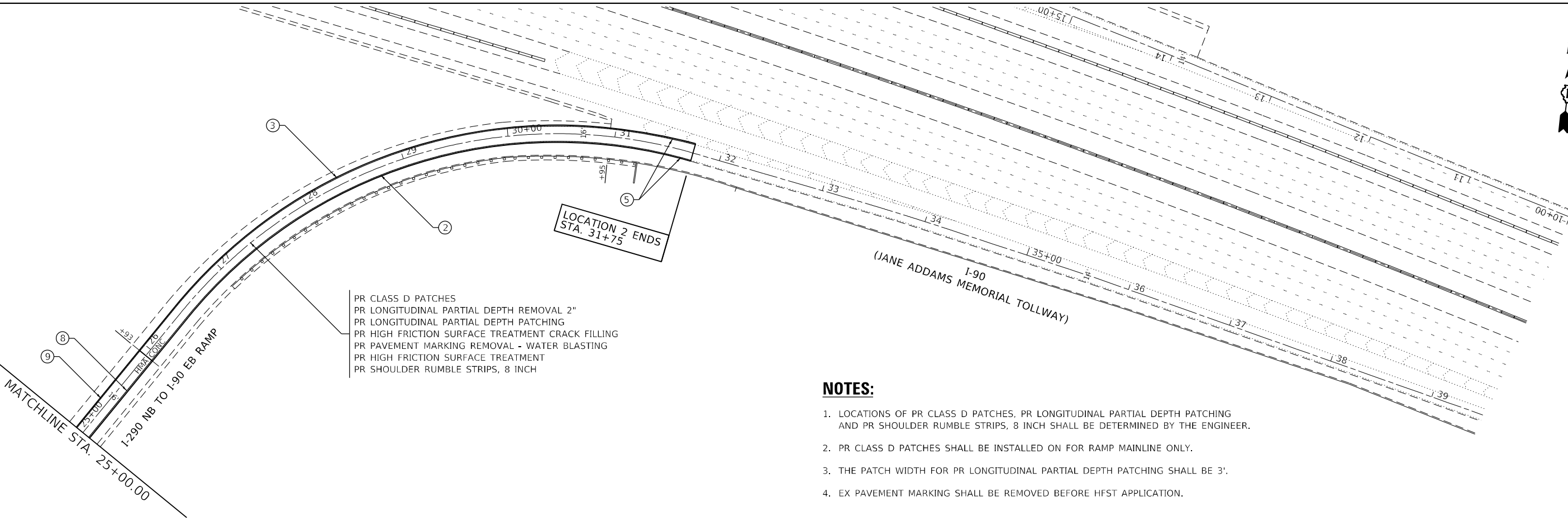


PAVEMENT MARKING LEGEND

①	MODIFIED URETHANE PAVEMENT MARKING, LETTERS AND SYMBOLS, SOLID WHITE (TYP.)
②	MODIFIED URETHANE PAVEMENT MARKING, 4" SOLID WHITE EDGE LINE (TYP.)
③	MODIFIED URETHANE PAVEMENT MARKING, 4" SOLID YELLOW EDGE LINE (TYP.)
④	MODIFIED URETHANE PAVEMENT MARKING, 5" SKIP-DASH WHITE LANE LINE, 10' DASH - 30' SKIP (TYP.)
⑤	MODIFIED URETHANE PAVEMENT MARKING, 8" SOLID WHITE GORE LINE (TYP.)
⑥	MODIFIED URETHANE PAVEMENT MARKING, 8" DOTTED WHITE LANE LINE, 3' DASH - 9' SKIP (TYP.)
⑦	MODIFIED URETHANE PAVEMENT MARKING, 8" SOLID WHITE EDGE LINE (TYP.)
⑧	THERMOPLASTIC PAVEMENT MARKING, 4" SOLID WHITE EDGE LINE (TYP.)
⑨	THERMOPLASTIC PAVEMENT MARKING, 4" SOLID YELLOW EDGE LINE (TYP.)
⑩	THERMOPLASTIC PAVEMENT MARKING, 8" SOLID WHITE GORE LINE (TYP.)

PR CLASS D PATCHES
 PR LONGITUDINAL PARTIAL DEPTH REMOVAL 2"
 PR LONGITUDINAL PARTIAL DEPTH PATCHING
 PR HIGH FRICTION SURFACE TREATMENT CRACK FILLING
 PR PAVEMENT MARKING REMOVAL - WATER BLASTING
 PR HIGH FRICTION SURFACE TREATMENT
 PR SHOULDER RUMBLE STRIPS, 8 INCH

MATCHLINE STA. 25+00.00



PR CLASS D PATCHES
 PR LONGITUDINAL PARTIAL DEPTH REMOVAL 2"
 PR LONGITUDINAL PARTIAL DEPTH PATCHING
 PR HIGH FRICTION SURFACE TREATMENT CRACK FILLING
 PR PAVEMENT MARKING REMOVAL - WATER BLASTING
 PR HIGH FRICTION SURFACE TREATMENT
 PR SHOULDER RUMBLE STRIPS, 8 INCH

NOTES:

1. LOCATIONS OF PR CLASS D PATCHES, PR LONGITUDINAL PARTIAL DEPTH PATCHING AND PR SHOULDER RUMBLE STRIPS, 8 INCH SHALL BE DETERMINED BY THE ENGINEER.
2. PR CLASS D PATCHES SHALL BE INSTALLED ON FOR RAMP MAINLINE ONLY.
3. THE PATCH WIDTH FOR PR LONGITUDINAL PARTIAL DEPTH PATCHING SHALL BE 3'.
4. EX PAVEMENT MARKING SHALL BE REMOVED BEFORE HFST APPLICATION.



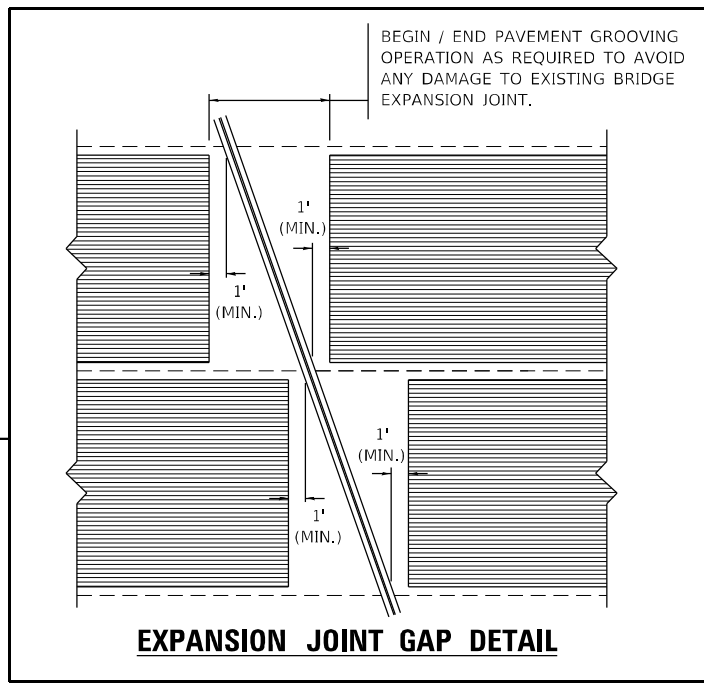
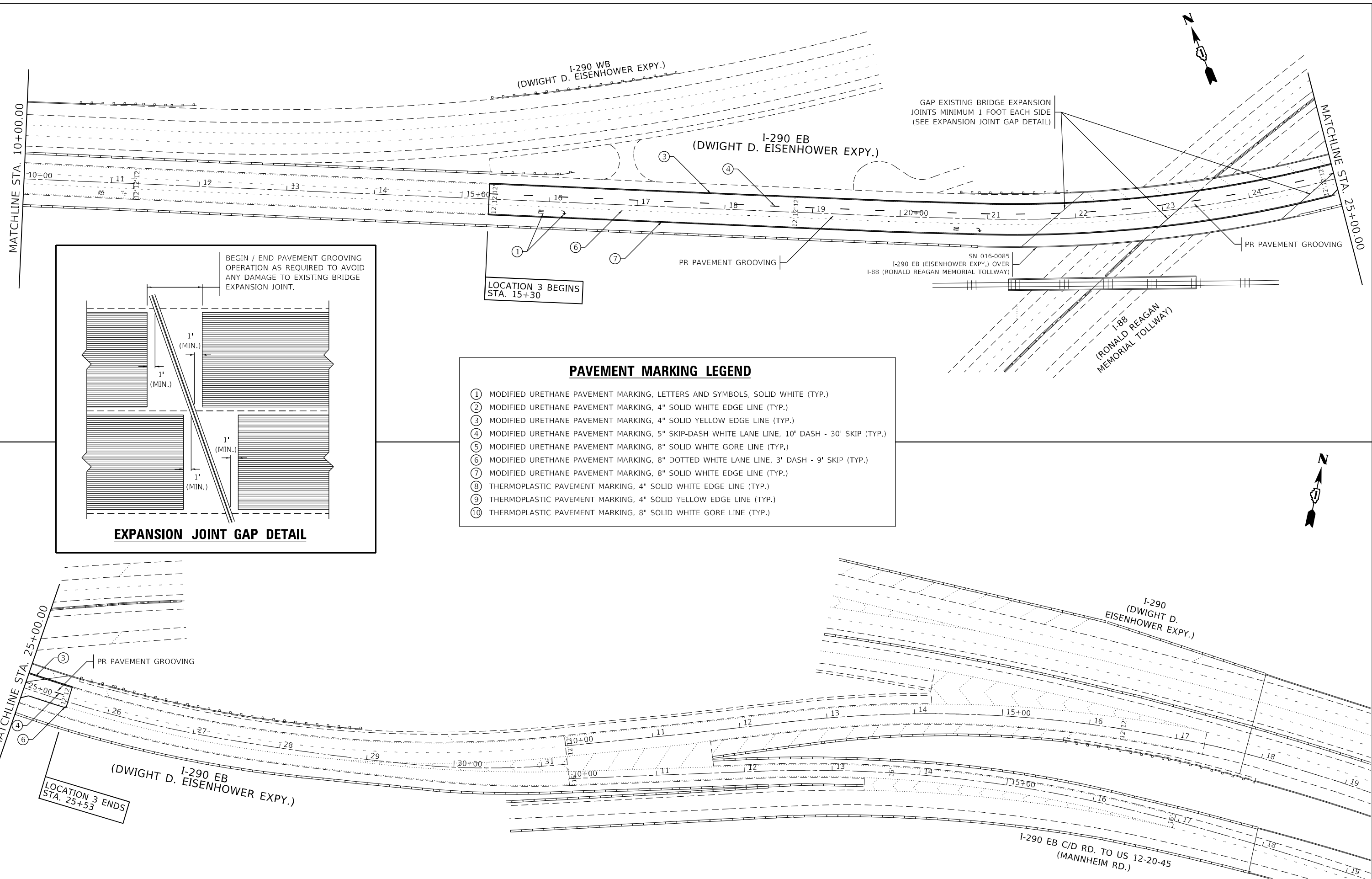
MODEL: Default
 FILE NAME: p:\project\62r59\11\DOT\Documents\DOT\Office\Drawings\11\Project\I-90 NB Ramp\CADD\Drawings\11\90-nb-ramp-11-20-23.dwg

USER NAME = Farnan,Tariq	DESIGNED -	REVISED -
PLOT SCALE = 100,0000' / in.	DRAWN -	REVISED -
PLOT DATE = 5/9/2023	CHECKED -	REVISED -
	DATE -	REVISED -

**STATE OF ILLINOIS
 DEPARTMENT OF TRANSPORTATION**

EXISTING AND PROPOSED ROADWAY PLAN	
LOCATION 2: I-290 NB TO I-90 EB RAMP	
SCALE: 1"=50'	SHEET OF SHEETS STA. TO STA.

F.A. RTE.	SECTION	COUNTY	TOTAL SHEETS	SHEET NO.
VAR.	FAI 290 22 PF	COOK	15	6
			CONTRACT NO. 62R59	
		ILLINOIS	FED. AID PROJECT	



PAVEMENT MARKING LEGEND

- ① MODIFIED URETHANE PAVEMENT MARKING, LETTERS AND SYMBOLS, SOLID WHITE (TYP.)
- ② MODIFIED URETHANE PAVEMENT MARKING, 4" SOLID WHITE EDGE LINE (TYP.)
- ③ MODIFIED URETHANE PAVEMENT MARKING, 4" SOLID YELLOW EDGE LINE (TYP.)
- ④ MODIFIED URETHANE PAVEMENT MARKING, 5" SKIP-DASH WHITE LANE LINE, 10' DASH - 30' SKIP (TYP.)
- ⑤ MODIFIED URETHANE PAVEMENT MARKING, 8" SOLID WHITE GORE LINE (TYP.)
- ⑥ MODIFIED URETHANE PAVEMENT MARKING, 8" DOTTED WHITE LANE LINE, 3' DASH - 9' SKIP (TYP.)
- ⑦ MODIFIED URETHANE PAVEMENT MARKING, 8" SOLID WHITE EDGE LINE (TYP.)
- ⑧ THERMOPLASTIC PAVEMENT MARKING, 4" SOLID WHITE EDGE LINE (TYP.)
- ⑨ THERMOPLASTIC PAVEMENT MARKING, 4" SOLID YELLOW EDGE LINE (TYP.)
- ⑩ THERMOPLASTIC PAVEMENT MARKING, 8" SOLID WHITE GORE LINE (TYP.)



MODEL: Default
 FILE: Mainfile.pxd
 PROJECT: I-90 WB Ramp/CADD/Design/1-90_eh-1-15.dgn

USER NAME = Farnan,Tariq	DESIGNED -	REVISED -
DRAWN -	REVISOR -	REVISION -
PLOT SCALE = 100,0000 ' / in.	CHECKED -	REVISOR -
PLOT DATE = 5/9/2023	DATE -	REVISION -

**STATE OF ILLINOIS
DEPARTMENT OF TRANSPORTATION**

EXISTING AND PROPOSED ROADWAY PLAN

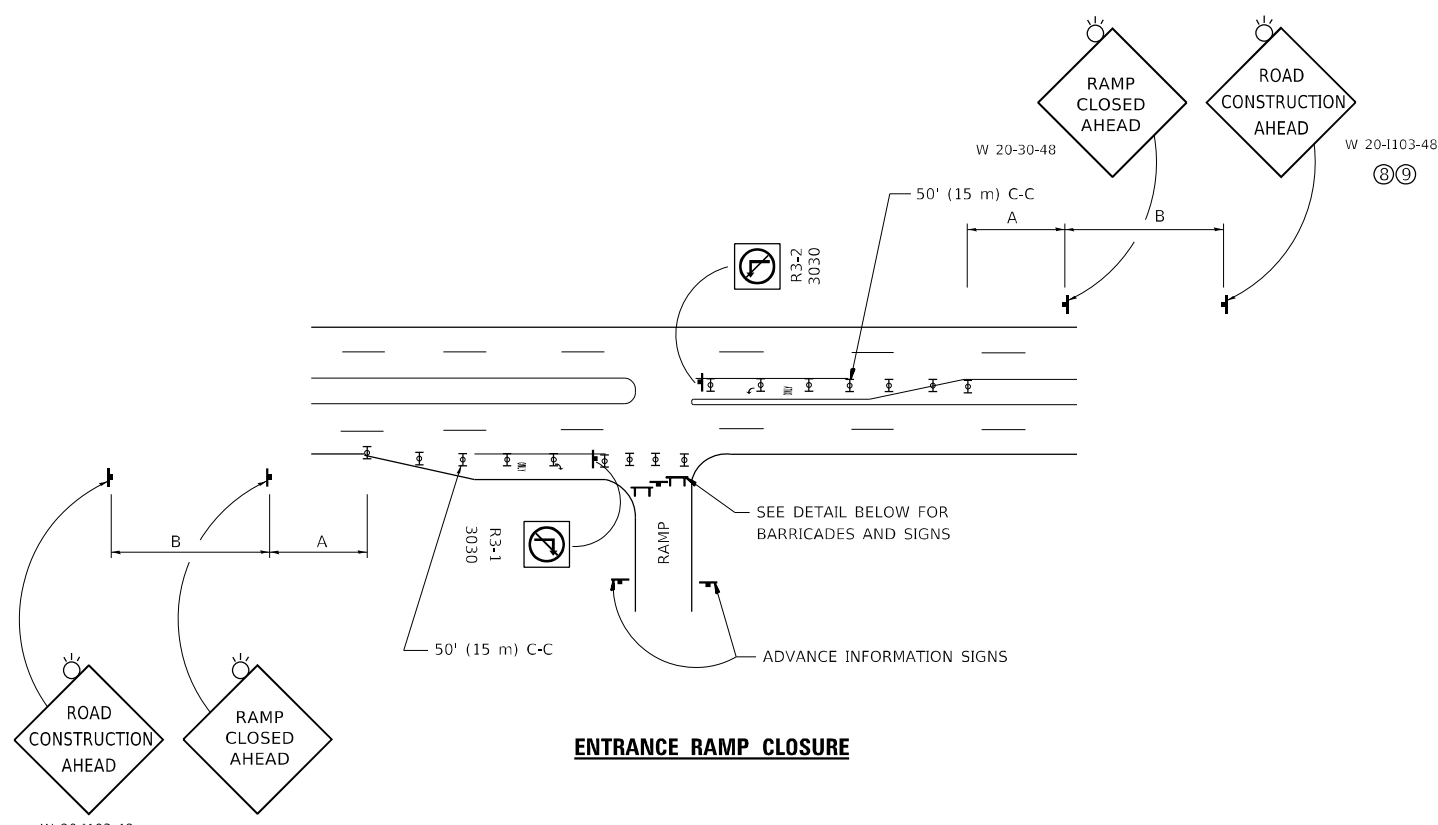
LOCATION 3: I-290 EB NEAR I-88

SCALE: 1"=50'

SHEET	OF	SHEETS	STA.	TO	STA.
-------	----	--------	------	----	------

F.A. RTE.	SECTION	COUNTY	TOTAL SHEETS	SHEET NO.
VAR.	FAI 290 22 PF	COOK	15	7
ILLINOIS FED. AID PROJECT			CONTRACT NO. 62R59	

MODEL: Default
 FILE NAME: p:\project-aw-beachey.com\PIV\DOT\Documents\DOT Office\District: 11\project11-99_WB_Ramp\CADD\Drawings\Design\Dist5c.dgn

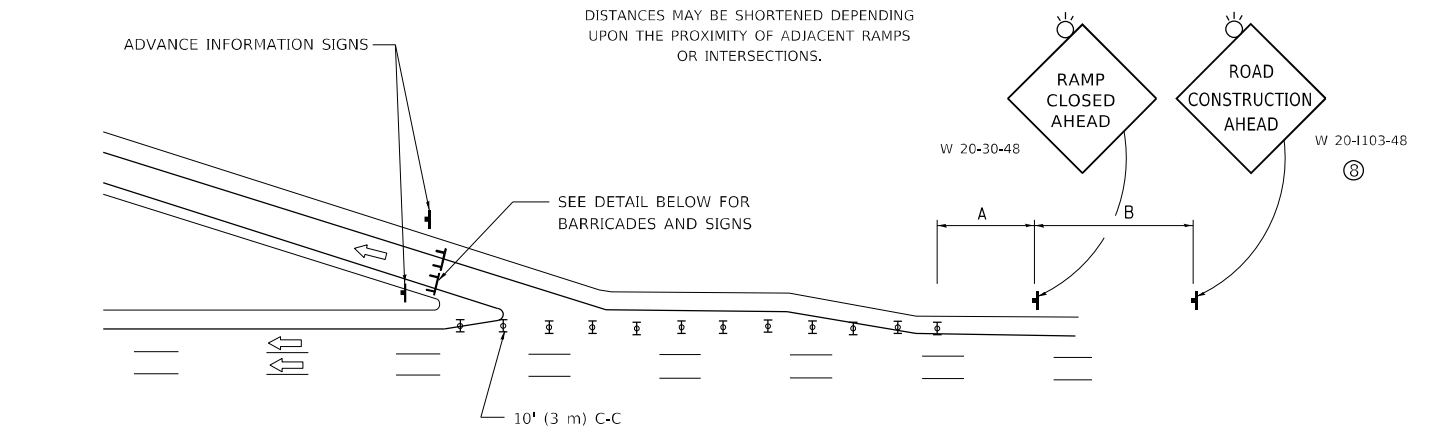


ENTRANCE RAMP CLOSURE

SIGN SPACING TABLE

FACILITY	DISTANCE BETWEEN SIGNS	
	A	B
EXPRESSWAY >24 HOURS	1000' (300 m)	1500' (450 m)
EXPRESSWAY ≤24 HOURS	500' (150 m)	500' (150 m)
ARTERIAL 55 MPH	500' (150 m)	500' (150 m)
ARTERIAL 50-45 MPH	350' (100 m)	350' (100 m)
ARTERIAL <45 MPH	200' (60 m)	200' (60 m)

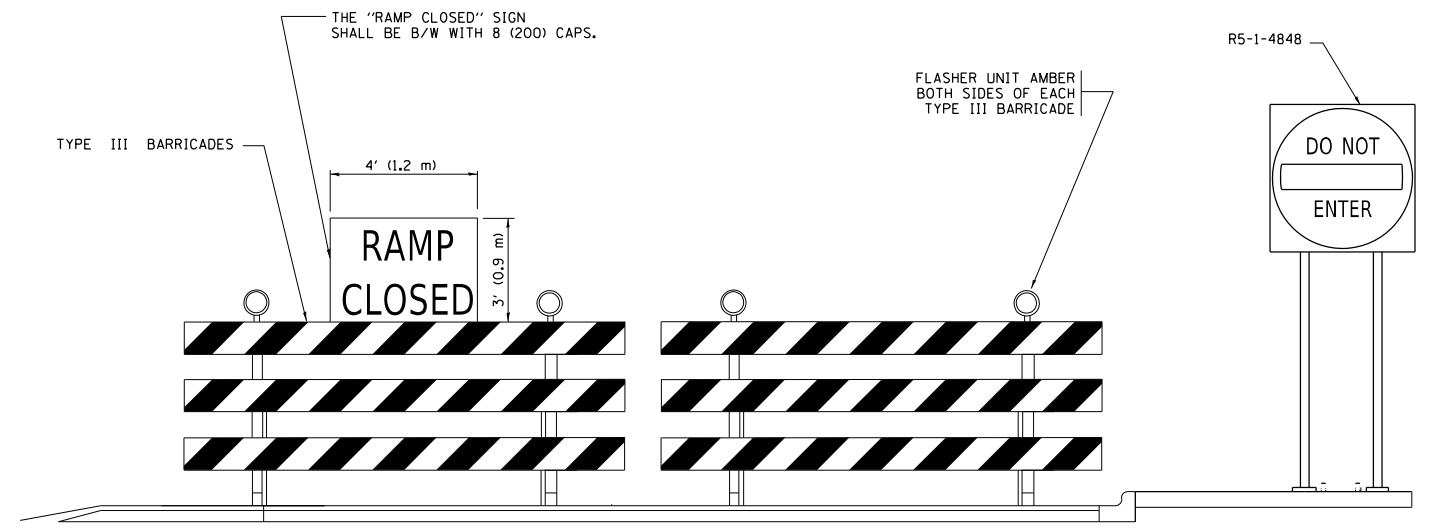
DISTANCES MAY BE SHORTENED DEPENDING UPON THE PROXIMITY OF ADJACENT RAMPS OR INTERSECTIONS.



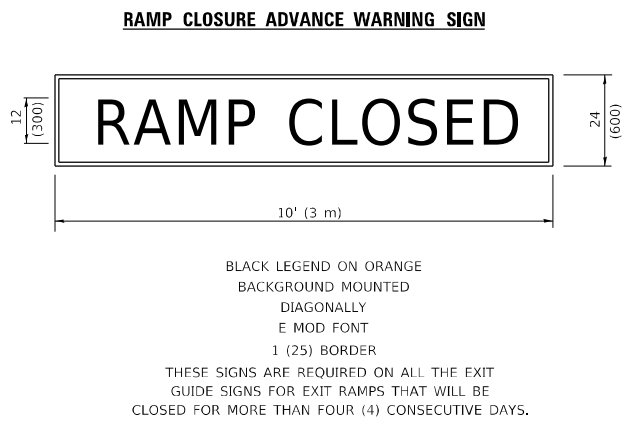
EXIT RAMP CLOSURE

SYMBOLS

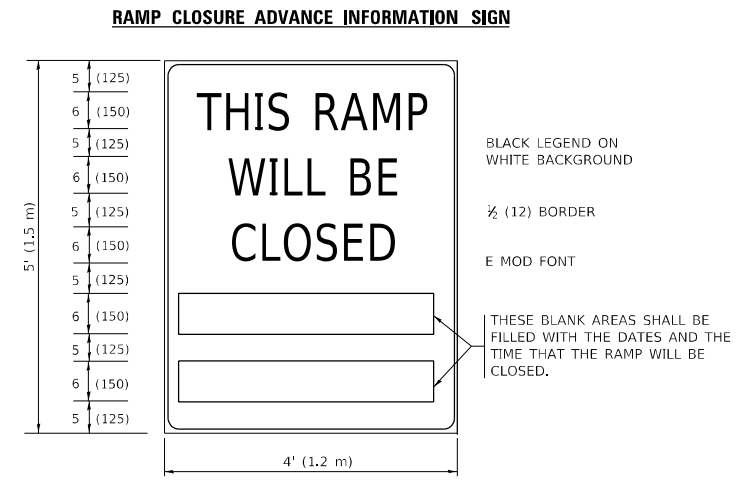
- ▬ TYPE II BARRICADE OR DRUM
- ▬ TYPE III BARRICADE WITH 2 FLASHING LIGHTS



DETAIL FOR REQUIRED BARRICADES & SIGNS



BLACK LEGEND ON ORANGE BACKGROUND MOUNTED DIAGONALLY
 E MOD FONT
 1 (25) BORDER
 THESE SIGNS ARE REQUIRED ON ALL THE EXIT GUIDE SIGNS FOR EXIT RAMPS THAT WILL BE CLOSED FOR MORE THAN FOUR (4) CONSECUTIVE DAYS.



BLACK LEGEND ON WHITE BACKGROUND
 1/2 (12) BORDER
 E MOD FONT
 THESE BLANK AREAS SHALL BE FILLED WITH THE DATES AND THE TIME THAT THE RAMP WILL BE CLOSED.

THESE SIGNS ARE REQUIRED ON BOTH SIDES OF THE RAMP, MINIMUM OF 1 WEEK IN ADVANCE OF THE CLOSURE.
 THESE SIGNS SHALL BE FABRICATED AND PAID FOR ACCORDING TO THE TEMPORARY INFORMATION SIGNING SPECIAL PROVISION

GENERAL NOTES:

- ① CONES MAY BE SUBSTITUTED FOR DRUMS OR TYPE II BARRICADES DURING DAY OPERATIONS. CONES SHALL BE A MINIMUM OF 28 (700) HIGH.
- ② VERTICAL BARRICADES SHALL NOT BE USED FOR RAMP CLOSURES.
- ③ A FLAGGER SHALL BE POSITIONED AT EACH CLOSED RAMP THAT IS OPEN TO CONSTRUCTION VEHICLES, PRECEDED BY A W20-7 FLAGGER WARNING SIGN.
- ④ ALL ROUTE MARKERS AND TRAILBLAZER ASSEMBLIES WHICH DIRECT MOTORISTS TO A CLOSED ENTRANCE RAMP SHALL BE COVERED WHEN THE RAMP IS CLOSED FOR MORE THAN FOUR (4) DAYS.
- ⑤ THE SIGNING AND BARRICADING WHICH IS REQUIRED BY THIS DETAIL SHALL BE INCLUDED IN THE COST OF TRAFFIC CONTROL AND PROTECTION (EXPRESSWAYS).
- ⑥ AUTHORIZATION FROM THE DISTRICT'S BUREAU OF TRAFFIC IS REQUIRED FOR ALL RAMP CLOSURES.
- ⑦ THE RAMP CLOSURE ADVANCE INFORMATION SIGNS SHALL BE ERECTED IF THE CLOSURE TIME EXCEEDS TWENTY-FOUR (24) HOURS. ADDITIONAL ADVANCE WARNING SIGNS ON EXIT GUIDE SIGNING WILL BE REQUIRED FOR EXIT RAMP CLOSURES THAT EXCEED FOUR (4) DAYS IN LENGTH.
- ⑧ ROAD CONSTRUCTION AHEAD SIGNS MAY BE OMITTED WHEN THIS DETAIL IS USED IN CONJUNCTION WITH OTHER TRAFFIC CONTROL THAT ALREADY INCLUDES A ROAD CONSTRUCTION AHEAD SIGN.
- ⑨ ARTERIAL ROAD CONSTRUCTION AHEAD SIGNS SHALL BE INSTALLED ON THE LEFT SIDE OF TRAFFIC IF THE MEDIAN IS MORE THAN 10 FT WIDE.

ALL DIMENSIONS ARE IN INCHES (MILLIMETERS) UNLESS OTHERWISE SHOWN.

USER NAME = Farman,Tariq	DESIGNED - D,W,S.	REVISED - S,P,B_01-07
DRAWN -	REVISED - S,P,B_12-09	
PLOT SCALE = 100,0000' / in.	CHECKED -	REVISED - M,D_06-13
PLOT DATE = 5/8/2023	DATE - 02-83	REVISED - M,D_01-18

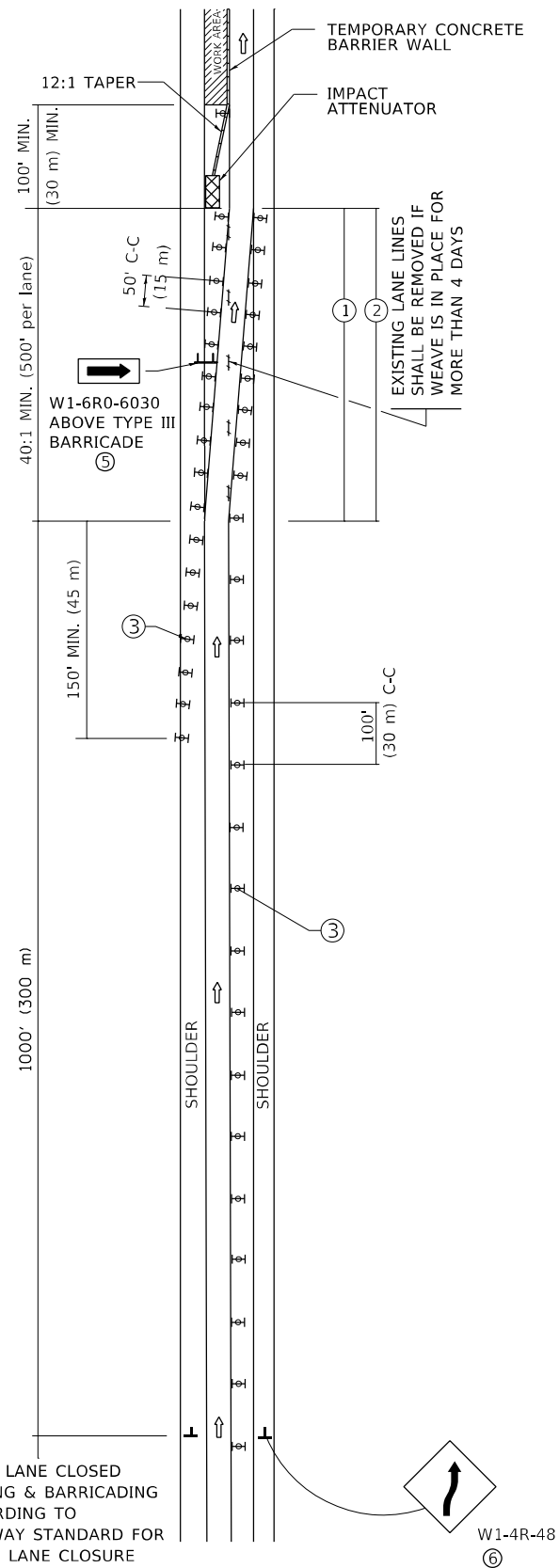
**STATE OF ILLINOIS
DEPARTMENT OF TRANSPORTATION**

**ENTRANCE_AND_EXIT_RAMP
CLOSURE_DETAILS**

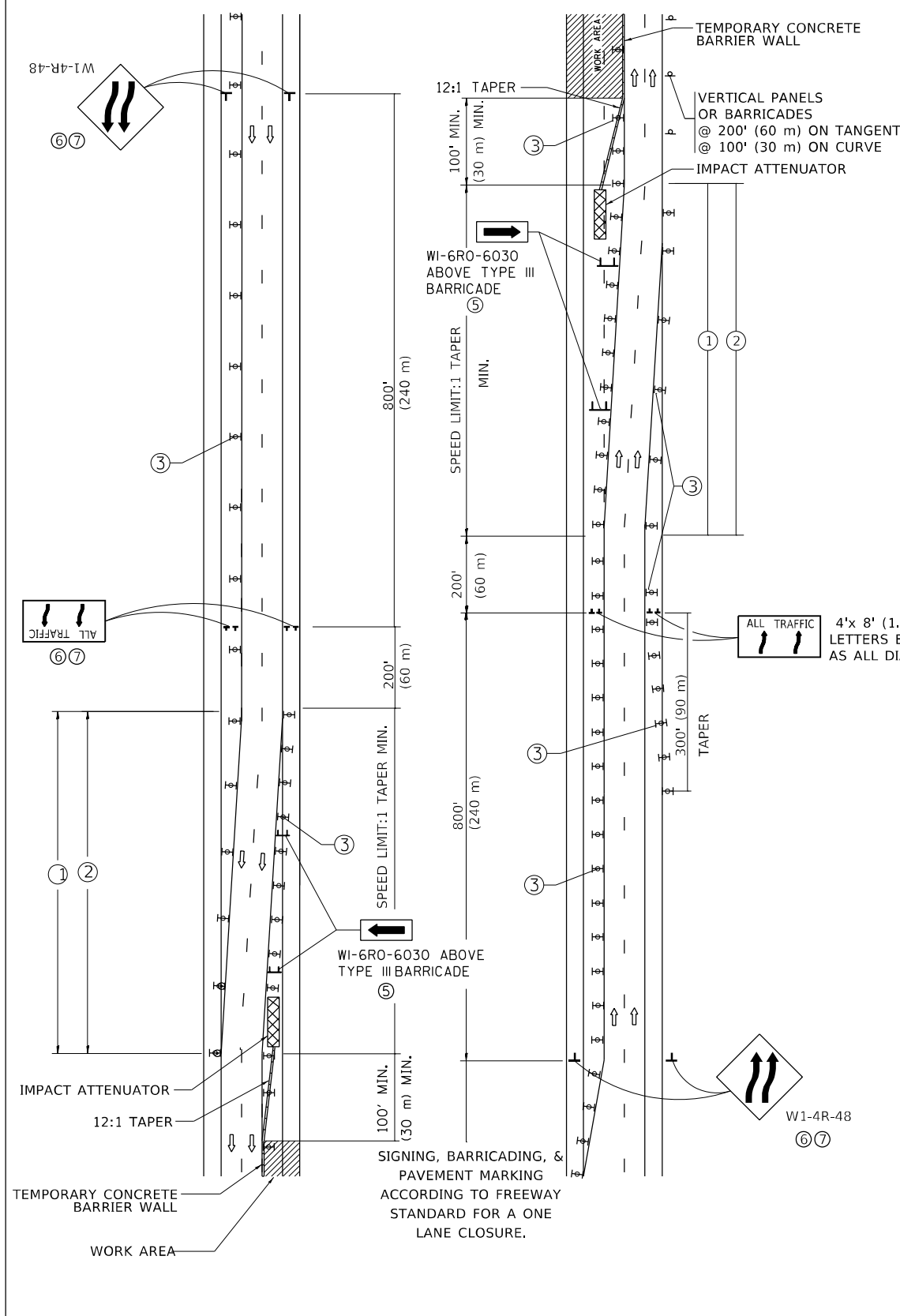
SCALE: NONE SHEET 1 OF 1 SHEETS STA. TO STA.

F.A. RTE.	SECTION	COUNTY	TOTAL SHEETS	SHEET NO.
VAR.	FAI 290 22 PF	COOK	15	8
TC-08			CONTRACT NO. 62R59	
		ILLINOIS	FED. AID PROJECT	

SINGLE LANE WEAVE



MULTI-LANE WEAVE



GENERAL NOTES:

- ① EXISTING CONFLICTING PAVEMENT MARKING LINES SHALL BE REMOVED. PAVEMENT MARKING REMOVAL SHALL NOT BE REQUIRED FOR SINGLE LANE WEAVES UNDER 4 DAYS IN DURATION.
- ② CONTINUOUS REFLECTIVE TEMPORARY PAVEMENT MARKING TAPE SHALL BE PLACED THROUGHOUT THE TAPER AND FOR 300' (90 m) ALONG SIDE THE WORK AREA WHERE THE CLOSURE TIME IS GREATER THAN FOURTEEN DAYS. THE LEFT EDGE LINE SHALL BE YELLOW AND THE RIGHT EDGE LINE SHALL BE WHITE. FOR MULTI-LANE WEAVES LANE LINES SHALL BE 5 INCH, 10'-30' (3 m-9 m) SKIP DASH, WHITE.
- ③ PLASTIC DRUMS WITH STEADY BURN LIGHTS AT 50' (15 m) C-C SPACING IN TAPERS AND 100' (30 m) C-C SPACING IN TANGENTS.
- ④ ALL SIGNS SHALL BE POST MOUNTED IF THE CLOSURE TIME EXCEEDS FOUR DAYS.
- ⑤ TYPE III BARRICADES MAY BE OMITTED FOR SINGLE-LANE WEAVES UNDER 24-HOURS IN DURATION. W1-6 SIGNS WILL STILL BE REQUIRED. IF THE WIDTH OF OFFSET IS LESS THAN 6' THEN THE TYPE III BARRICADE WITH ATTACHED ARROW SIGN PANEL CAN BE ELIMINATED IN THE TAPER AREAS.
- ⑥ WHEN THE LENGTH OF THE SHIFTED SEGMENT (DISTANCE BETWEEN WEAVE POINTS) IS LESS THAN 1500', DOUBLE REVERSE CURVE SIGNS (W24-1) SHOULD BE USED INSTEAD OF THE REVERSE CURVE (W1-4) SIGNS. ARROWS ON THE 4'X8' "ALL TRAFFIC" SIGNS SHALL BE THE SAME SHAPE.
- ⑦ THE NUMBER OF ARROWS ON THESE SIGNS SHALL MATCH THE NUMBER OF LANES OPEN TO TRAFFIC.

SYMBOLS

- DIRECTION OF TRAFFIC
- WORK AREA
- SIGN ON PORTABLE OR PERMANENT SUPPORT
- TYPE II BARRICADE OR DRUM WITH MONO-DIRECTIONAL STEADY BURNING LIGHT
- TEMPORARY CONCRETE BARRIER WALL
- IMPACT ATTENUATOR
- W1-4R-48
- W24-1-48

ALL DIMENSIONS ARE IN INCHES (MILLIMETERS) UNLESS OTHERWISE SHOWN

MODEL: Default
FILE NAME: p:\ultra-cw-bentley.com\PIV\DOT\Documents\DOT Office\District: 11\projects\11-99 WB Ramp\CAD\Drawings\Design\Dist\TC.dgn

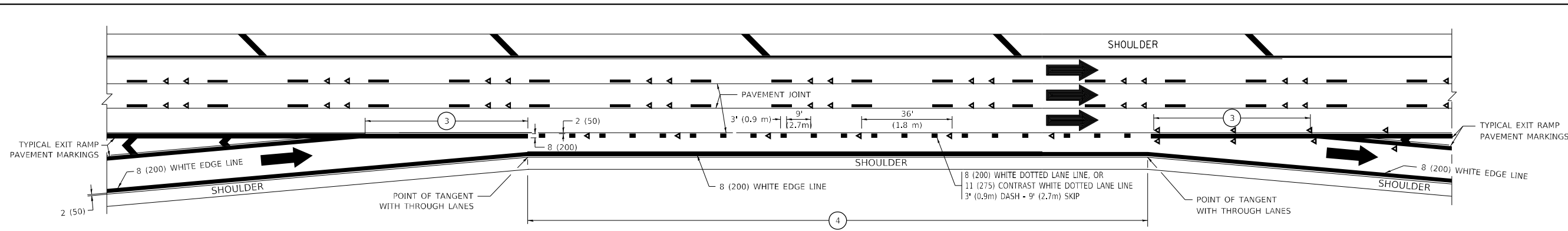
USER NAME = Farnan,Tariq	DESIGNED - D,W,S.	REVISED - J,A,F. 02-06
	DRAWN -	REVISED - S,P,B. 01-07
PLOT SCALE = 100,0000' / in.	CHECKED -	REVISED - S,P,B. 12-09
PLOT DATE = 5/8/2023	DATE - 02-87	REVISED - M,D. 06-13

**STATE OF ILLINOIS
DEPARTMENT OF TRANSPORTATION**

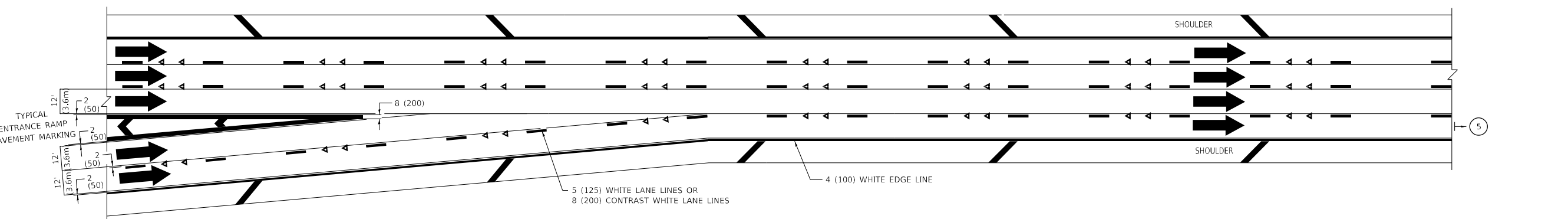
**TRAFFIC CONTROL DETAILS FOR
FREEWAY SINGLE & MULTI-LANE WEAVE**

SCALE: NONE SHEET 1 OF 1 SHEETS STA. TO STA.

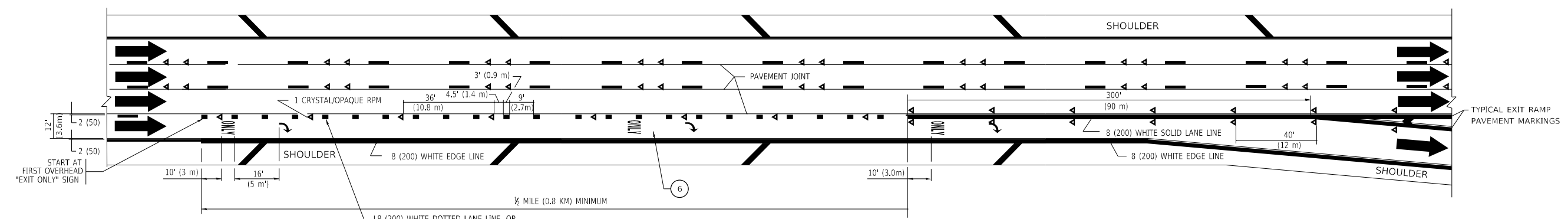
F.A. RTE.	SECTION	COUNTY	TOTAL SHEETS	SHEET NO.
VAR.	FAI 290 22 PF	COOK	15	9
TC-09		CONTRACT NO. 62R59		
ILLINOIS FED. AID PROJECT				



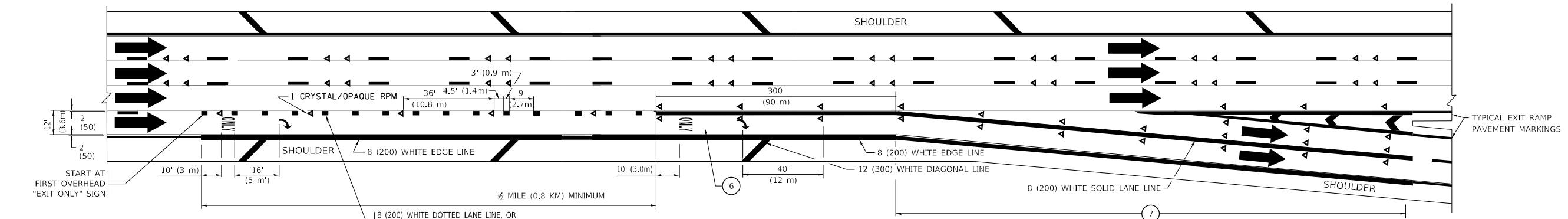
AUXILIARY LANE MARKINGS



TWO LANE ENTRANCE RAMP WITH MERGE MARKINGS



EXIT ONLY LANE MARKINGS



EXIT ONLY WITH OPTION LANE MARKINGS

- NOTES:**
- ③ OMIT WHEN LENGTH OF AUXILIARY LANE IS LESS THAN 500' (150 m).
 - ④ 8-INCH WIDE DOTTED LANE LINE MARKINGS SHALL BE USED WHEN THE LENGTH OF THE AUXILIARY LANE IS 2 MILES OR LESS.
 - ⑤ FOR TWO-LANE ENTRANCE RAMP, IF RIGHT LANE ENDS, USE TYPICAL ENTRANCE RAMP PAVEMENT MARKINGS.
 - ⑥ ONLY AND ARROWS EQUALLY SPACED, 500' (150 m) MAXIMUM SPACING. FULL SIZE LETTERS AND ARROW SHALL BE USED.
 - ⑦ CONTINUE 8" SOLID LANE LINE THROUGH EXIT TO END OF PAVED GORE.

MODEL: Default
 FILE: Multi-Lane-Freeway-Pavement-Markings-Details.dwg
 PROJECT: I-90 WB Ramps/CADD/Design/Design/Design.dwg
 USER: Farnan, Tariq
 DATE: 5/8/2023

USER NAME = Farnan, Tariq	DESIGNED - D.W.S.	REVISED - J.A.F. 02-06
	DRAWN -	REVISED - S.P.B. 01-07
PLOT SCALE = 100,0000' / in.	CHECKED -	REVISED - S.P.B. 01-10
PLOT DATE = 5/8/2023	DATE - 01-90	REVISED - M.D. 09-17

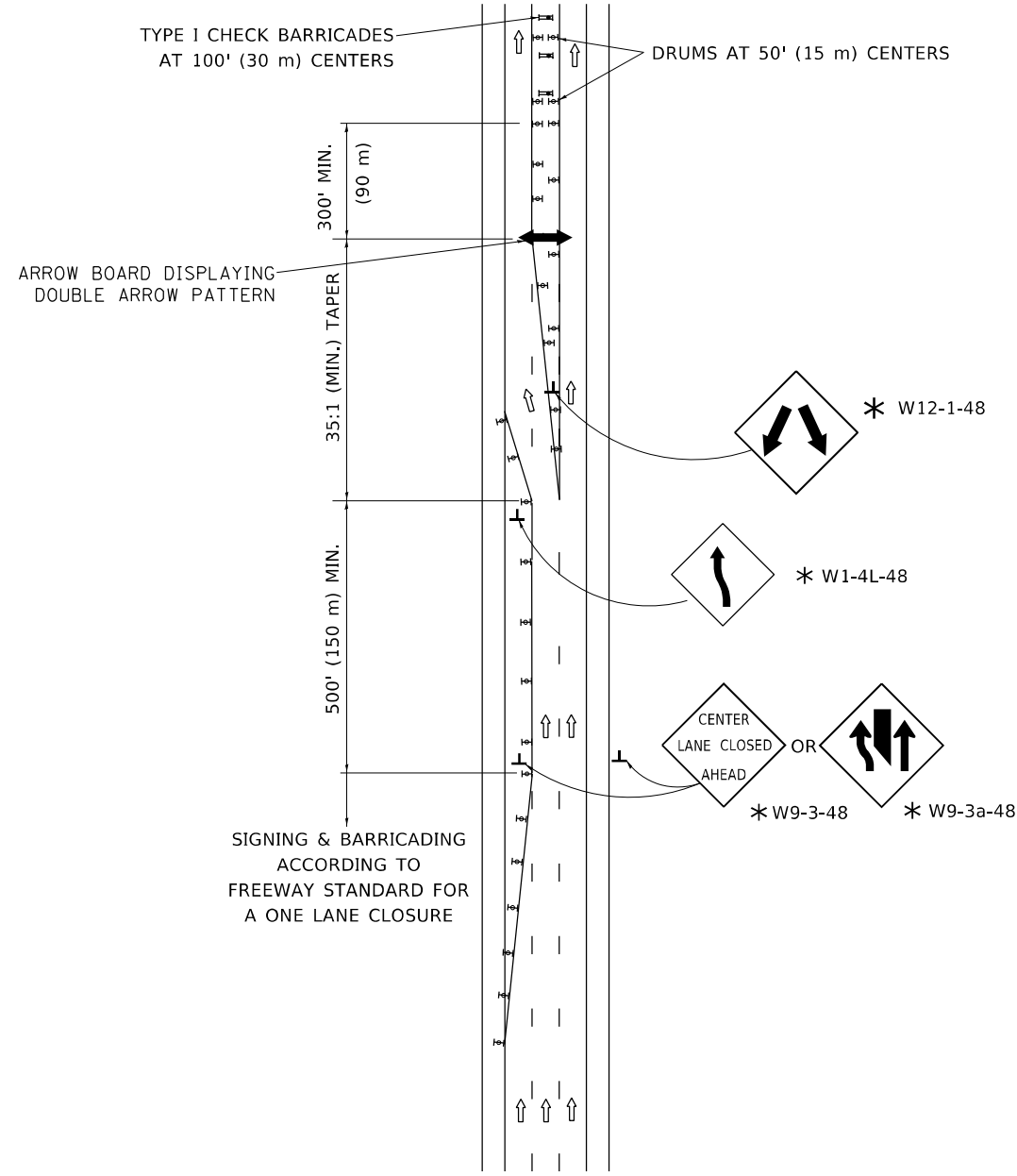
**STATE OF ILLINOIS
DEPARTMENT OF TRANSPORTATION**

**MULTI-LANE FREEWAY
PAVEMENT MARKING DETAILS**

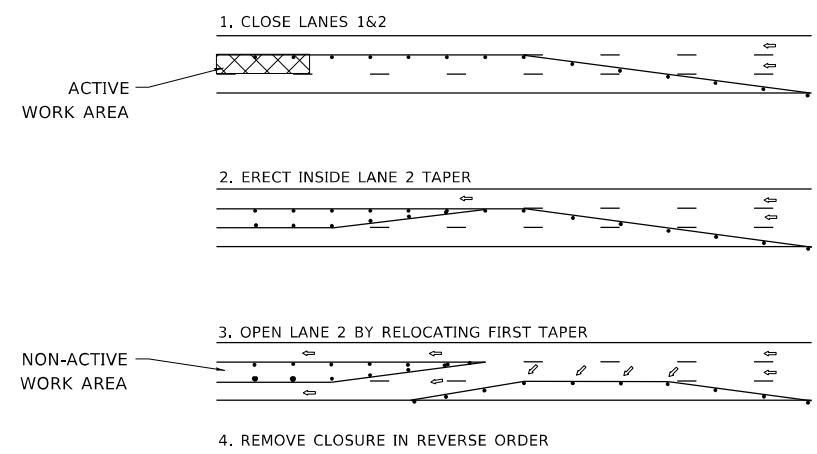
SCALE: NONE SHEET 2 OF 2 SHEETS STA. TO STA.

F.A. RTE.	SECTION	COUNTY	TOTAL SHEETS	SHEET NO.
VAR.	FAI 290 22 PF	COOK	15	11
TC-12		CONTRACT NO. 62R59		
ILLINOIS		FED. AID PROJECT		

CENTER LANE CLOSURE

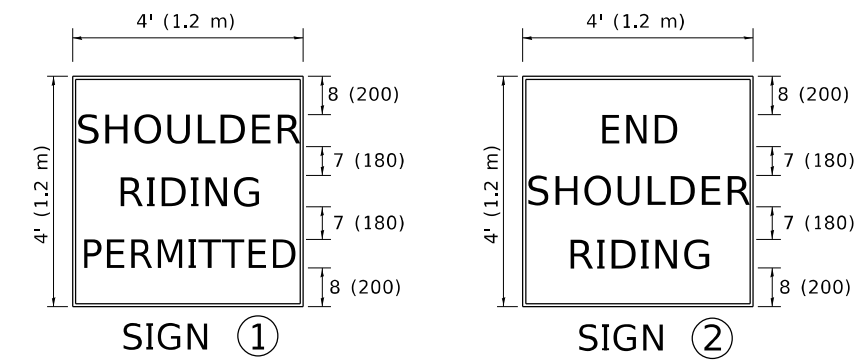
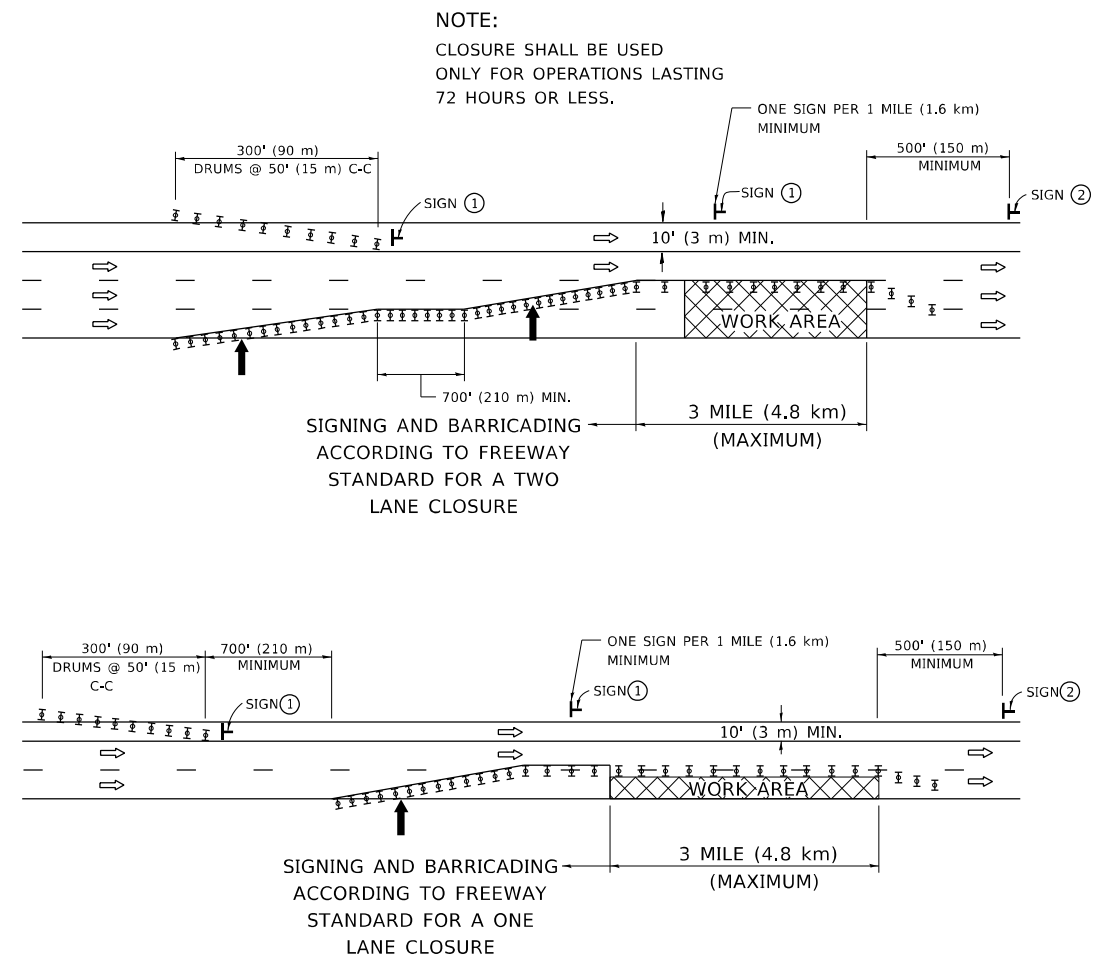


INSTALLATION SEQUENCE



- NOTES:**
- DRUMS WITH STEADY BURN LIGHTS SHALL BE USED AT 50' (15 m) CENTERS ON ALL TAPERS AND TANGENTS IN ADVANCE OF WORK AREA.
 - CLOSURE SHALL BE USED ONLY FOR OPERATIONS LASTING 72 HOURS OR LESS.
 - CENTER LANE CLOSURE CONFIGURATION IS NOT TO BE USED WITH WORKERS PRESENT.

SHOULDER LANE



6 (150) SERIES "C" LEGEND
BLACK LEGEND
WHITE REFLECT. BACKGROUND
1 (25) BORDER

- SYMBOLS**
- ↑ DIRECTION OF TRAFFIC
 - ➡ ARROWBOARD
 - ▣ ACTIVE WORK AREA
 - ⊥ SIGN ON PORTABLE OR PERMANENT SUPPORT *
 - ⊥ TYPE II BARRICADE, OR DRUM WITH MONO-DIRECTIONAL STEADY BURN LIGHT

ALL DIMENSIONS ARE IN INCHES (MILLIMETERS) UNLESS OTHERWISE SHOWN

* ALL SIGNS SHALL BE MOUNTED AT A MINIMUM HEIGHT OF 5' (1.5 m).

MODEL: Default
FILE NAME: \\pulsar\paw\bea\paw.com\PIV\DOT\Documents\DOT Office\Dir\rdet_11\Project\11-90_WB_Ramp\CADD\data\Design\Diagrams.dgn

USER NAME = Farman,Tariq	DESIGNED -	REVISOR - J.A.F. 04-03
	DRAWN -	REVISOR - S.P.B. 01-07
PLOT SCALE = 100,0000' / in.	CHECKED -	REVISOR - S.P.B. 12-09
PLOT DATE = 5/8/2023	DATE -	REVISOR -

STATE OF ILLINOIS
DEPARTMENT OF TRANSPORTATION

TRAFFIC CONTROL DETAILS FOR FREEWAY	
CENTER LANE CLOSURE SHOULDER LANE	
SCALE: NONE	SHEET 1 OF 1 SHEETS STA. TO STA.

F.A. RTE.	SECTION	COUNTY	TOTAL SHEETS	SHEET NO.
VAR.	FAI 290 22 PF	COOK	15	15
TC-25		CONTRACT NO. 62R59		
ILLINOIS FED. AID PROJECT				