

SPECIALTY ITEM	CODE NO.	ITEM	UNIT	TOTAL QUANTITY	CONSTRUCTION CODE
					STRUCTURE 056-0053
					FEDERAL =80%
					STATE=20%
					0059
					URBAN
Y	78200011	BARRIER WALL REFLECTORS, TYPE C	EACH	6	6
	78300200	RAISED REFLECTIVE PAVEMENT MARKER REMOVAL	EACH	10	10
	78300202	PAVEMENT MARKING REMOVAL - WATER BLASTING	SQ FT	551	551
Y	89000100	TEMPORARY TRAFFIC SIGNAL INSTALLATION	EACH	1	1
	Z0001800	APPROACH SLAB REPAIR (PARTIAL DEPTH)	SQ YD	27	27
	Z0006016	BRIDGE DECK LATEX CONCRETE OVERLAY, 2 3/4 INCHES	SQ YD	390	390
	Z0012130	BRIDGE DECK SCARIFICATION 3/4"	SQ YD	390	390
	Z0012754	STRUCTURAL REPAIR OF CONCRETE (DEPTH EQUAL TO OR LESS THAN 5 INCHES)	SQ FT	13	13
	Z0012755	STRUCTURAL REPAIR OF CONCRETE (DEPTH GREATER THAN 5 INCHES)	SQ FT	13	13
	Z0016001	DECK SLAB REPAIR (FULL DEPTH, TYPE I)	SQ YD	1	1
	Z0029090	DIAMOND GRINDING (BRIDGE SECTION)	SQ YD	406	406
	Z0030850	TEMPORARY INFORMATION SIGNING	SQ FT	72	72
	Z0043800	PRECAST PRESTRESSED CONCRETE I-BEAM REPAIR	SQ FT	27	27
Y	Z0073510	TEMPORARY TRAFFIC SIGNAL TIMING	EACH	1	1
	X0325748	ACRYLIC COATING	SQ YD	11	11



⚠ REVISED 7-25-2023

MODEL: Default
FILE NAME: E:\1763_07\CAD\Sheet\MOT500.dgn



WSP USA Inc.
30 N. LASALLE STREET
SUITE 4200
CHICAGO, IL 60602
TEL: (312) 782-8150
FAX: (312) 782-1884

USER NAME = USHA669697
DESIGNED -
DRAWN -
PLOT SCALE = 40,000' / in.
CHECKED -
PLOT DATE = 5/12/2023
DATE -

REVISOR -
REVISIONS -
REVISOR -
REVISIONS -

STATE OF ILLINOIS
DEPARTMENT OF TRANSPORTATION

SUMMARY OF QUANTITIES

SCALE: SHEET OF SHEETS STA. TO STA.

F.A.P. RTE.	SECTION	COUNTY	TOTAL SHEETS	SHEET NO.
0326	FAP 032622 BJ	McHENRY	75	6
			CONTRACT NO. 62T01	
ILLINOIS FED. AID PROJECT				

MAINTENANCE OF TRAFFIC GENERAL NOTES

- TRAFFIC CONTROL AND PROTECTION SHALL BE PERFORMED IN ACCORDANCE WITH THE TRAFFIC CONTROL PLAN, TRAFFIC SIGNAL PLANS, THESE NOTES, APPLICABLE SPECIAL PROVISIONS, AND SECTION 701 OF THE STANDARD SPECIFICATION AS AMENDED BY THE SPECIAL PROVISION FOR WORK ZONE TRAFFIC CONTROL (CHECK SHEET LRS 3).
- THE TYPE III BARRICADES ARE TO BE PLACED IN ACCORDANCE WITH STANDARD 701901 UNLESS AUTHORIZED BY THE ENGINEER TO USE AN ALTERNATE ARRANGEMENT.
- EXISTING TRAFFIC CONTROL SIGNS AND DEVICES MAY BE REMOVED BY THE MCHENRY COUNTY DIVISION OF TRANSPORTATION AFTER THE TRAFFIC CONTROL REQUIREMENTS ARE MET OR AS AUTHORIZED BY THE ENGINEER; ANY SIGNS OR DEVICES LEFT IN PLACE AT THIS TIME ARE TO BE RELOCATED, MAINTAINED AND PROTECTED FROM DAMAGE BY THE CONTRACTOR AND ANY DAMAGED OR LOST SIGNS WILL BE REPLACED BY THE CONTRACTOR AT NO ADDITIONAL COST TO THE CONTRACT.
- BARRICADES THAT MUST BE PLACED IN EXCAVATED AREAS SHALL HAVE LEG EXTENSIONS INSTALLED SUCH THAT THE TOP OF THE BARRICADE IS IN COMPLIANCE WITH THE HEIGHT REQUIREMENTS OF STANDARD 701901.
- TYPE I OR TYPE II BARRICADES WITH TWO-WAY FLASHING LIGHTS SHALL BE REQUIRED AT ALL OPEN TRENCHES, EXCAVATIONS, OPEN OR EXPOSED SEWER STRUCTURES, TRANSVERSE PAVEMENT JOINTS, MATERIALS OR EQUIPMENT WITHIN THE RIGHT-OF-WAY (NUMBER AND SPACING DEPENDS ON THE CONDITIONS); AND AT LOCATIONS DESIGNATED BY THE ENGINEER OR LOCAL LAW ENFORCEMENT AGENCIES.
- WHERE REQUIRED, TRAFFIC SIGNS SHALL BE RELOCATED FOR EACH STAGE OF CONSTRUCTION. RELOCATION IS INCLUDED IN THE COST OF THE CONTRACT.
- PRIOR TO THE START OF CONSTRUCTION, REQUIRED TRAFFIC CONTROL DEVICES SHALL BE IN PLACE.
- THE CONTRACTOR SHALL CONTACT THE IDOT TRAFFIC SUPERVISOR AT KALPANA.KANNAN-HOSADURGA@ILLINOIS.GOV 72 HOURS IN ADVANCE OF BEGINNING WORK.
- THE FOLLOWING TRAFFIC CONTROL STANDARDS ARE THE MINIMUM REQUIREMENTS FOR THE TRAFFIC CONTROL FOR THIS PROJECT:
- DROP-OFFS ADJACENT TO THE TRAVEL LANE SHALL BE KEPT TO A MINIMUM. PROTECTION OF THE DROP-OFF SHALL BE ACCORDING TO THE IDOT BUREAU OF SAFETY PROGRAMS AND ENGINEERING, SAFETY ENGINEERING POLICY MEMORANDUM 4-21. DROP-OFFS GREATER THAN OR EQUAL TO 12" WILL NOT BE ALLOWED AT LOCATIONS WHERE THE DROP-OFF IS LOCATED WITHIN 8 FT OF THE EDGE OF THE TRAVEL LANE. THE CONTRACTOR SHALL BE RESPONSIBLE FOR ENSURING THAT THE DROP-OFF AREAS MEET THE OFFSET, HEIGHT, AND DURATION REQUIREMENTS TO USE BARRICADES AT THE END OF EACH WORKDAY. THIS MAY REQUIRE THE CONTRACTOR TO REPLACE OR PLACE SUFFICIENT MATERIAL IN THE EXCAVATION TO REDUCE THE DROP-OFF TO BE COMPLIANT WITH THE REQUIREMENTS FOR USE OF BARRICADES. NO ADDITIONAL COMPENSATION SHALL BE ALLOWED TO COMPLY WITH THIS REQUIREMENT.

SUGGESTED CONSTRUCTION SEQUENCING

CONSTRUCTION STAGING

PRE-STAGE

- INSTALL TRAFFIC CONTROL DEVICES AND TEMPORARY PAVEMENT MARKINGS, UTILIZE HIGHWAY STANDARDS 701201, 701301, 701311 AS WELL AS DISTRICT STANDARDS TC-10 AND TC-13 TO CLOSE THE SB SHOULDER AND PARTIAL LANE DURING THE ALLOWABLE LANE CLOSURE HOURS.
- MAINTAIN (2) 12' TRAVEL LANES. SHIFT TRAFFIC TO EAST, USING THE NB SHOULDER, NB LANE, AND PARTIAL SB LANE AS SHOWN IN THE PRE STAGE MOT PLANS.
- CONSTRUCT HMA PAVEMENT ALONG SB SHOULDERS AND HMA DRIVEWAY AS CALLED OUT ON PLANS.

STAGE 1

- INSTALL TRAFFIC CONTROL DEVICES AND TEMPORARY PAVEMENT MARKINGS, UTILIZE HIGHWAY STANDARDS 701201, 701301, 701311 AS WELL AS DISTRICT STANDARDS TC-10, TC-13 AND AS SHOWN IN THE STAGE 1 MOT PLANS.
- CLOSE NB SHOULDER AND NB LANE AS SHOWN IN THE STAGE 1 MOT PLANS, UTILIZING TEMPORARY TRAFFIC SIGNALS TO DIRECT (1) 16' LANE ON THE SB LANE AND SB SHOULDER.
- PERFORM BRIDGE DECK SCARIFICATION, DECK LATEX CONCRETE OVERLAY, AND DIAMOND GRINDING ON NB BRIDGE DECK AND HMA OVERLAY ON BRIDGE APPROACHES. CONSTRUCT HMA OVERLAY ON NB SHOULDERS AS CALLED OUT ON PLANS.

STAGE 2

- INSTALL TRAFFIC CONTROL DEVICES AND TEMPORARY PAVEMENT MARKINGS, UTILIZE HIGHWAY STANDARDS 701201, 701301, 701311 AS WELL AS DISTRICT STANDARDS TC-10, TC-13 AND AS SHOWN IN THE STAGE 2 MOT PLANS.
- CLOSE SB SHOULDER AND SB LANE AS SHOWN IN THE STAGE 2 MOT PLANS, UTILIZING TEMPORARY TRAFFIC SIGNALS TO DIRECT (1) 16' LANE ON THE NB LANE AND NB SHOULDER.
- PERFORM BRIDGE DECK SCARIFICATION, DECK LATEX CONCRETE OVERLAY, AND DIAMOND GRINDING ON SB BRIDGE DECK AND HMA OVERLAY ON BRIDGE APPROACHES. CONSTRUCT HMA OVERLAY ON SB SHOULDERS.

A REVISED 7-25-2023

15

MODEL: Default
FILE NAME: E:\1785_07\CAD\Sheets\Construction Revision\0165701-MOT_General Notes.dgn

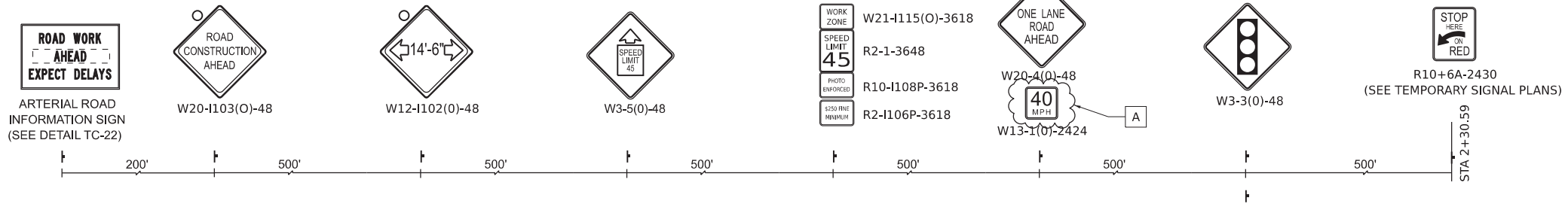
USER NAME	USHA669697	DESIGNED	-	REVISED	-	ADDENDUM A	7/24/23
		DRAWN	-	REVISED	-		
PLOT SCALE	2,000' / in.	CHECKED	-	REVISED	-		
PLOT DATE	7/24/2023	DATE	-	REVISED	-		

**STATE OF ILLINOIS
DEPARTMENT OF TRANSPORTATION**

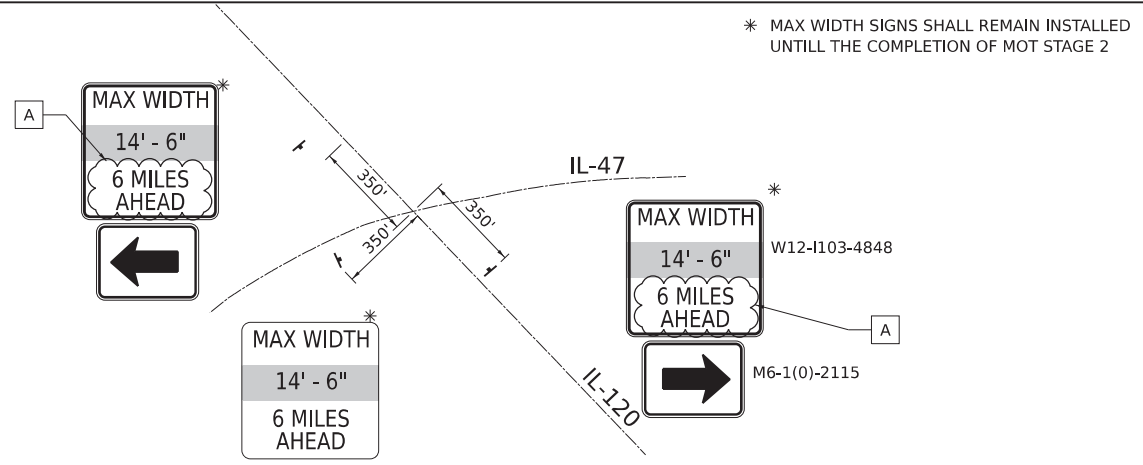
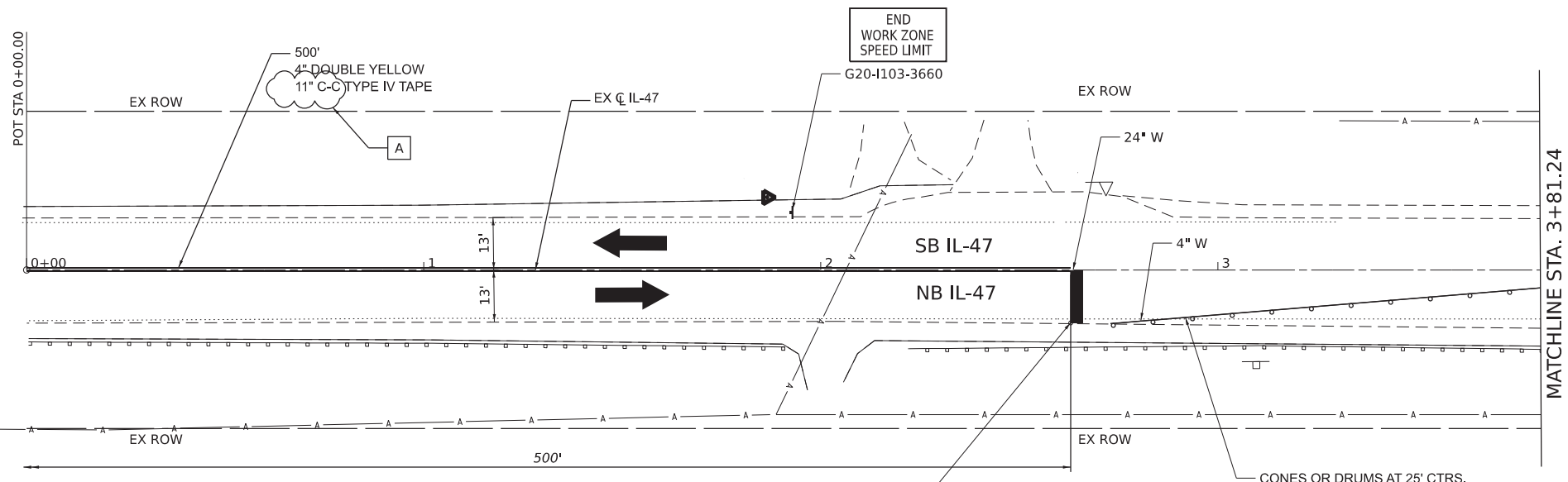
**MAINTENANCE OF TRAFFIC
GENERAL NOTES**

SCALE: NONE SHEET 1 OF 1 SHEETS STA. TO STA.

F.A. IL RTE.	SECTION	COUNTY	TOTAL SHEETS	SHEET NO.
47	FAP 032622 BJ	McHENRY	77	15
CONTRACT NO. 62T01				
ILLINOIS		FED. AID PROJECT		



ADVANCE SIGNING FOR NB IL-47
(SPACING MAY VARY DUE TO FIELD CONDITIONS)



WORK ZONE STAGE 1
BEGIN STA: 2+62.92

CONES OR DRUMS AT 25' CTRS.
1:12 MIN. WITH BI-DIRECTIONAL
STEADY BURN LIGHTS



NOTES:
THE CONTRACTOR SHALL APPLY PROTECTIVE COAT TO THE BRIDGE DECK AFTER IT HAS BEEN DIAMOND GRIDED AND GROOVED.
PER ARTICLE 503.19, PROTECTIVE COAT CANNOT BE APPLIED UNTIL THE CONCRETE IS AT LEAST 14 DAYS OLD.

REVISED 7-25-2023

CONSTRUCTION WORK ZONE	PVMT CONSTRUCTED IN PREVIOUS STAGE	TYPE III BARRICADE WITH STEADY BURNING LIGHTS	PCMS BOARD
CONSTRUCTION WORK ZONE CONTD FROM PREVIOUS STAGE	ARROW BOARD	TYPE II BARRICADE OR DRUM W STEADY BURNING LIGHT	CONSTRUCTION SIGN
PR PVMT CONSTRUCTED IN PREVIOUS STAGE		DIRECTIONAL INDICATOR BARRICADE W/ STEADY BURN MONODIRECTIONAL LIGHT	IMPACT ATTENUATOR
TEMP CONCRETE BARRIER			

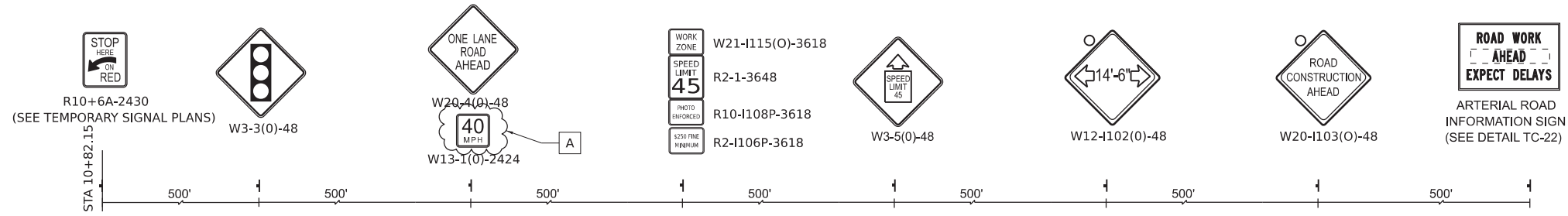
MODEL: Default; FILE NAME: E:\1765_07\CAD\Drawings\Construction\Rebid\0165701-shc-Stage 1_0001.dgn

	WSP USA Inc. 30 N. LASALLE STREET SUITE 4200 CHICAGO, IL 60602 TEL: (312) 782-8150 FAX: (312) 782-1884	USER NAME = USHA669697	DESIGNED -	REVISED - ADDENDUM A 7/24/23
		PLOT SCALE = 40,000' / in.	DRAWN -	REVISED -
		PLOT DATE = 7/24/2023	CHECKED -	REVISED -
			DATE -	REVISED -

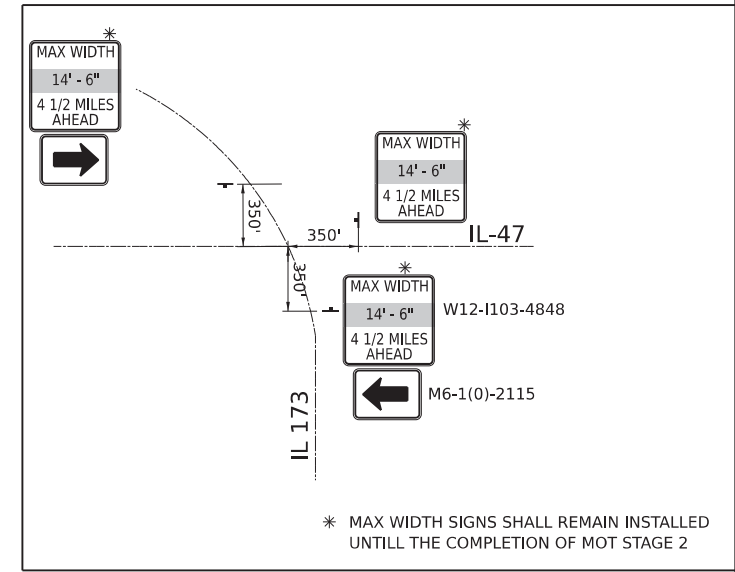
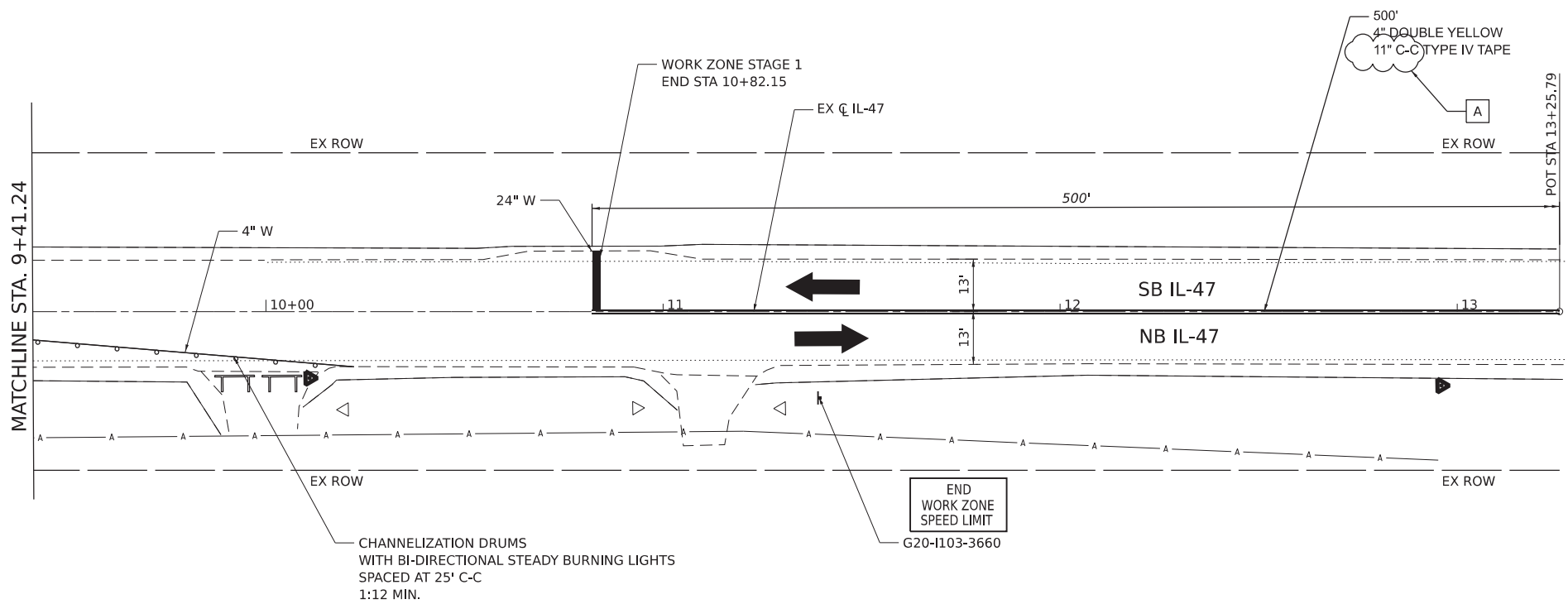
**STATE OF ILLINOIS
DEPARTMENT OF TRANSPORTATION**

MAINTENANCE OF TRAFFIC - STAGE 1				
IL-47				
SCALE:	SHEET	OF	SHEETS	STA. TO STA.

F.A.P. RTE.	SECTION	COUNTY	TOTAL SHEETS	SHEET NO.
0326	FAP 032622 BJ	McHENRY	77	22
CONTRACT NO. 62T01			ILLINOIS FED. AID PROJECT	



ADVANCE SIGNING FOR SB IL-47
(SPACING MAY VARY DUE TO FIELD CONDITIONS)



* MAX WIDTH SIGNS SHALL REMAIN INSTALLED UNTILL THE COMPLETION OF MOT STAGE 2



CONSTRUCTION WORK ZONE	PVMT CONSTRUCTED IN PREVIOUS STAGE	TYPE III BARRICADE WITH STEADY BURNING LIGHTS	PCMS BOARD
CONSTRUCTION WORK ZONE CONTD FROM PREVIOUS STAGE	ARROW BOARD	TYPE II BARRICADE OR DRUM W STEADY BURNING LIGHT	CONSTRUCTION SIGN
PR PVMT CONSTRUCTED IN PREVIOUS STAGE		DIRECTIONAL INDICATOR BARRICADE W/ STEADY BURN MONODIRECTIONAL LIGHT	IMPACT ATTENUATOR
TEMP CONCRETE BARRIER			

NOTES:

THE CONTRACTOR SHALL APPLY PROTECTIVE COAT TO THE BRIDGE DECK AFTER IT HAS BEEN DIAMOND GRINDED AND GROOVED. PER ARTICLE 503.19, PROTECTIVE COAT CANNOT BE APPLIED UNTIL THE CONCRETE IS AT LEAST 14 DAYS OLD.

A REVISED 7-25-2023

MODEL: D:\default\171763_07\CAD\Drawings\Construction\Revision\165701-shc-Stage 1_0003.dgn



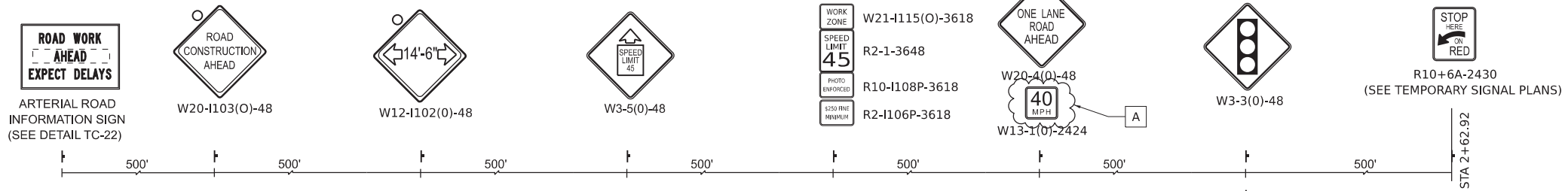
WSP USA Inc. 30 N. LASALLE STREET SUITE 4200 CHICAGO, IL 60602 TEL: (312) 782-8150 FAX: (312) 782-1884	USER NAME = USHA669697	DESIGNED -	REVISED - ADDENDUM A 7/24/23
	PLOT SCALE = 40,000' / in.	DRAWN -	REVISED -
	PLOT DATE = 7/24/2023	CHECKED -	REVISED -
		DATE -	REVISED -

**STATE OF ILLINOIS
DEPARTMENT OF TRANSPORTATION**

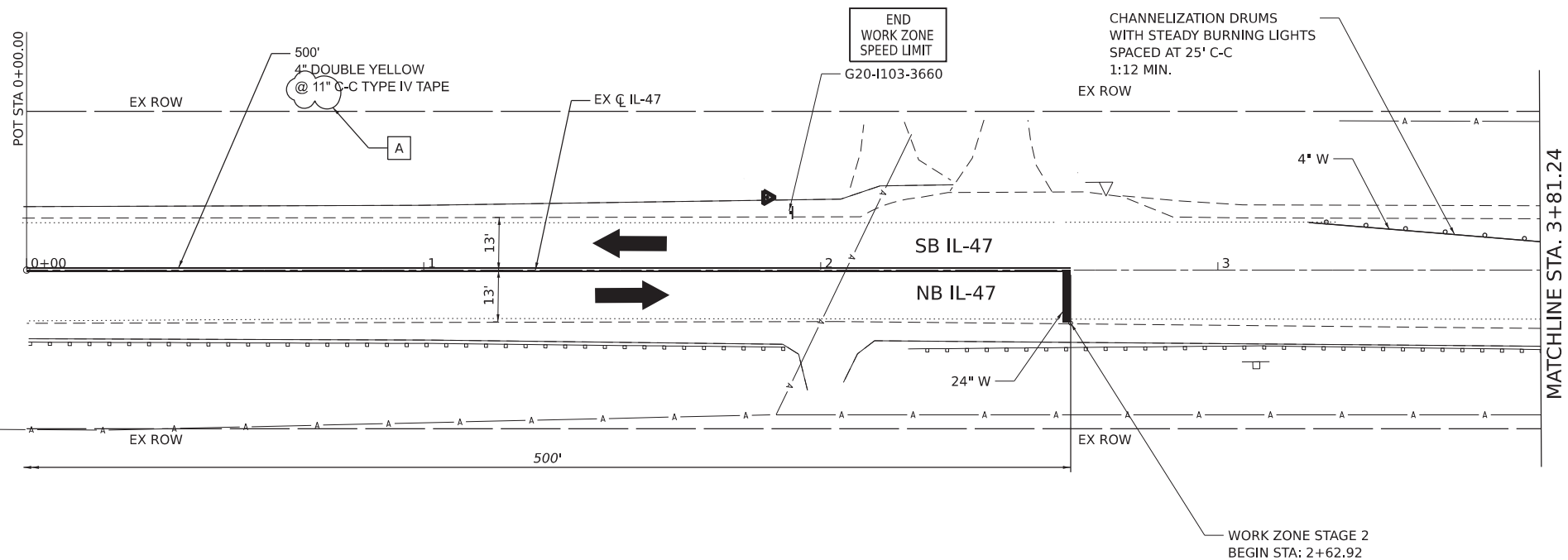
**MAINTENANCE OF TRAFFIC – STAGE 1
IL-47**

SCALE:	SHEET	OF	SHEETS	STA.	TO	STA.
--------	-------	----	--------	------	----	------

F.A.P. RTE.	SECTION	COUNTY	TOTAL SHEETS	SHEET NO.
0326	FAP 032622 BJ	McHENRY	77	24
CONTRACT NO. 62T01			ILLINOIS FED. AID PROJECT	



ADVANCE SIGNING FOR NB IL-47
(SPACING MAY VARY DUE TO FIELD CONDITIONS)



LEGEND	CONSTRUCTION WORK ZONE	PVMT CONSTRUCTED IN PREVIOUS STAGE	TYPE III BARRICADE WITH STEADY BURNING LIGHTS	PCMS BOARD
	CONSTRUCTION WORK ZONE CONTD FROM PREVIOUS STAGE	ARROW BOARD	TYPE II BARRICADE OR DRUM W STEADY BURNING LIGHT	CONSTRUCTION SIGN
	PR PVMT CONSTRUCTED IN PREVIOUS STAGE		DIRECTIONAL INDICATOR BARRICADE W/ STEADY BURN MONODIRECTIONAL LIGHT	DIRECTION OF TRAFFIC
	TEMP CONCRETE BARRIER		IMPACT ATTENUATOR	

NOTES:
THE CONTRACTOR SHALL APPLY PROTECTIVE COAT TO THE BRIDGE DECK AFTER IT HAS BEEN DIAMOND GRIDED AND GROOVED. PER ARTICLE 503.19, PROTECTIVE COAT CANNOT BE APPLIED UNTIL THE CONCRETE IS AT LEAST 14 DAYS OLD.

A REVISED 7-25-2023

MODEL: Default; FILE NAME: E:\1765_07\CAD\Drawings\Construction\Rebid\165701-shc-Stage 2_0001.dgn

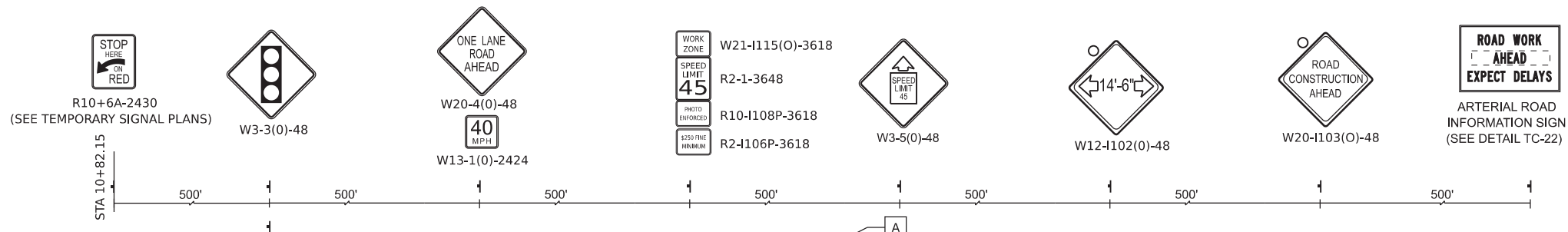


USER NAME	USHA669697	DESIGNED -	REVISOR -	ADDENDUM A 7/24/23
DESIGNED BY		DRAWN -	REVISIONS -	
PLOT SCALE	40,000' / in.	CHECKED -	REVISIONS -	
PLOT DATE	7/24/2023	DATE -	REVISIONS -	

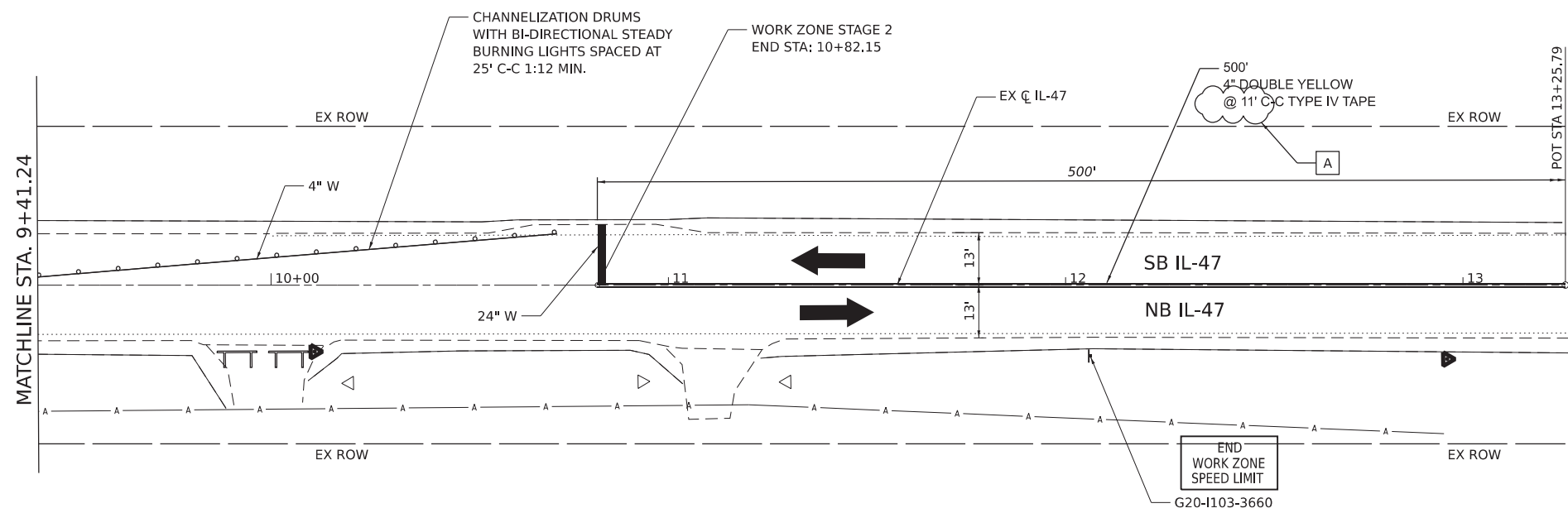
**STATE OF ILLINOIS
DEPARTMENT OF TRANSPORTATION**

MAINTENANCE OF TRAFFIC - STAGE 2			
IL-47			
SCALE:	SHEET	OF SHEETS	STA. TO STA.

F.A.P. RTE.	SECTION	COUNTY	TOTAL SHEETS	SHEET NO.
0326	FAP 032622 BJ	McHENRY	77	25
CONTRACT NO. 62T01			ILLINOIS FED. AID PROJECT	



ADVANCE SIGNING FOR SB IL-47
(SPACING MAY VARY DUE TO FIELD CONDITIONS)



LEGEND	
	CONSTRUCTION WORK ZONE
	CONSTRUCTION WORK ZONE CONTD FROM PREVIOUS STAGE
	PR PVMT CONSTRUCTED IN PREVIOUS STAGE
	PVMT CONSTRUCTED IN PREVIOUS STAGE
	ARROW BOARD
	TYPE III BARRICADE WITH STEADY BURNING LIGHTS
	TYPE II BARRICADE OR DRUM W STEADY BURNING LIGHT
	DIRECTIONAL INDICATOR BARRICADE W/ STEADY BURN MONODIRECTIONAL LIGHT
	PCMS BOARD
	CONSTRUCTION SIGN
	DIRECTION OF TRAFFIC
	IMPACT ATTENUATOR

NOTES:
THE CONTRACTOR SHALL APPLY PROTECTIVE COAT TO THE BRIDGE DECK AFTER IT HAS BEEN DIAMOND GRINDED AND GROOVED. PER ARTICLE 503.19, PROTECTIVE COAT CANNOT BE APPLIED UNTIL THE CONCRETE IS AT LEAST 14 DAYS OLD.

A REVISED 7-25-2023

MODEL: Default; FILE NAME: E:\1765_07\CAD\Drawings\Construction\Rebid\0165701-sh-Stage_2_0003.dgn

WSP USA Inc. 30 N. LASALLE STREET SUITE 4200 CHICAGO, IL 60602 TEL: (312) 782-8150 FAX: (312) 782-1884	USER NAME = USHA669697 DESIGNED - DRAWN - PLOT SCALE = 40,000' / in. PLOT DATE = 7/24/2023	DESIGNED - DRAWN - CHECKED - DATE -	REVISED - ADDENDUM A 7/24/23 REVISED - REVISED - REVISED -	STATE OF ILLINOIS DEPARTMENT OF TRANSPORTATION	MAINTENANCE OF TRAFFIC - STAGE 2 IL-47		F.A.P. RTE. 0326 SECTION FAP 032622 BJ COUNTY McHENRY TOTAL SHEETS 77 SHEET NO. 27	CONTRACT NO. 62T01 ILLINOIS FED. AID PROJECT
	SCALE: SHEET OF SHEETS STA. TO STA.							