

STATE OF ILLINOIS
DEPARTMENT OF TRANSPORTATION

F.A.U. RTE.	SECTION	COUNTY	TOTAL SHEETS	SHEET NO.
383	FAU 0383 22 RS	WILL	33	1
		ILLINOIS	CONTRACT NO. 62T35	

PROPOSED HIGHWAY PLANS

F.A.U. ROUTE 383: IL-113 (COAL CITY RD.)
FROM: I-55 TO IL-53
SECTION: FAU 0383 22 RS
PROJECT: NHPP-8RPM(907)
SMART OVERLAY
WILL COUNTY

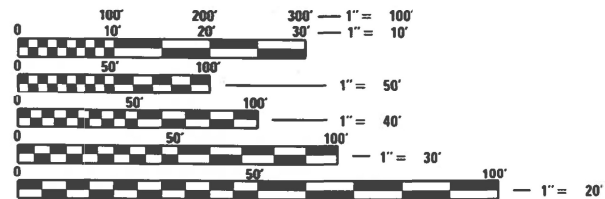
THE IMPROVEMENT IS LOCATED IN THE CITIES OF BRAIDWOOD AND WILMINGTON AND THE VILLAGE OF DIAMOND

TRAFFIC DATA:
IL-113 ROAD 2021 ADT = 3,700
POSTED SPEED LIMIT = 45-55 MPH

DESIGN DESIGNATION:
OTHER PRINCIPAL ARTERIAL

BRIDGE OMISSION:
STA. 22+17 TO STA. 24+49

IL-129 OMISSION:
STA. 131+63 TO STA. 146+57



FULL SIZE PLANS HAVE BEEN PREPARED USING STANDARD ENGINEERING SCALES. REDUCED SIZED PLANS WILL NOT CONFORM TO STANDARD SCALES. IN MAKING MEASUREMENTS ON REDUCED PLANS, THE ABOVE SCALES MAY BE USED.

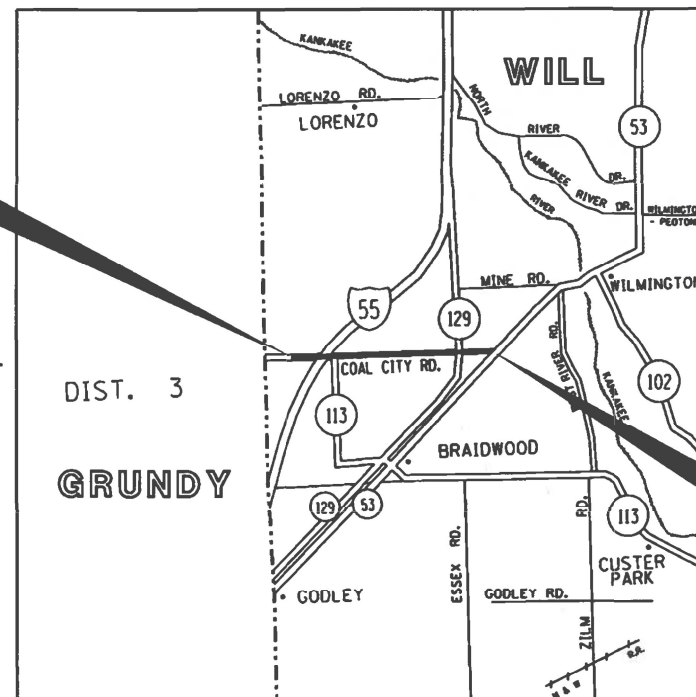
J.U.L.I.E.
JOINT UTILITY LOCATION INFORMATION FOR EXCAVATION
1-800-892-0123
OR 811

PROJECT ENGINEER: LUKASZ POCIECHA (847) 705-4255
PROJECT MANAGER: FAWAD AQUEEL

CONTRACT NO. 62T35

C-91-340-22

R 9 E



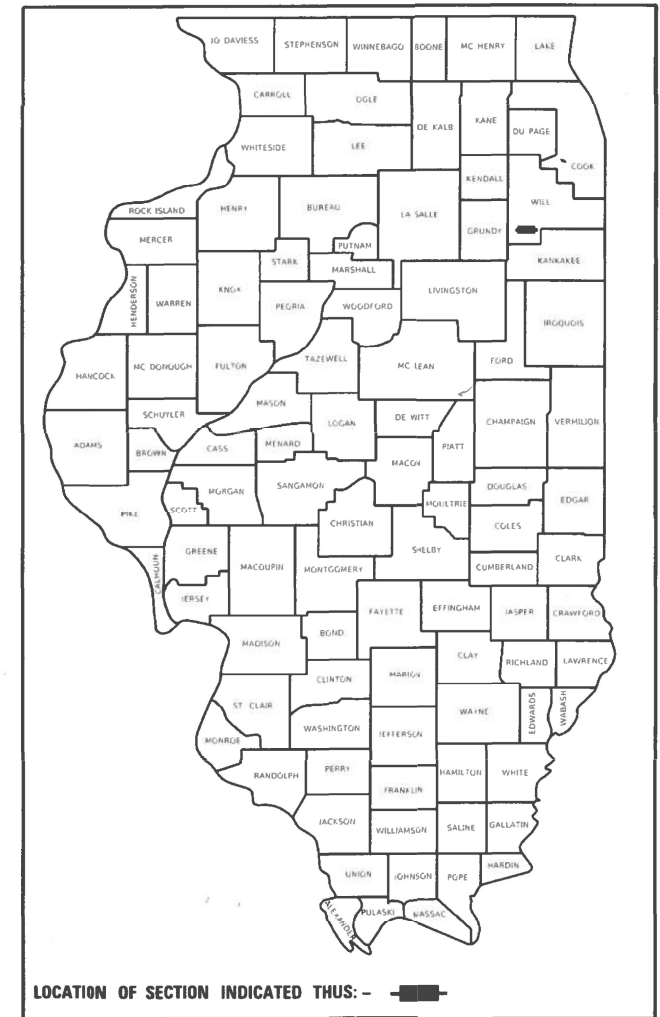
IMPROVEMENT BEGINS
STA. 14 + 39

IMPROVEMENT ENDS
STA. 166 + 85

WILMINGTON, REED, AND CUSTER TOWNSHIPS

GROSS LENGTH = 15,246 FT. = 2.89 MILES
NET LENGTH = 13,520 FT. = 2.56 MILES

D-91-286-22



STATE OF ILLINOIS
DEPARTMENT OF TRANSPORTATION

SUBMITTED MAY 8 2023
Jose Pina REGIONAL ENGINEER
June 30, 2023
[Signature] ENGINEER OF DESIGN AND ENVIRONMENT
June 30, 2023
[Signature] DIRECTOR OF HIGHWAYS PROJECT IMPLEMENTATION

PRINTED BY THE AUTHORITY
OF THE STATE OF ILLINOIS

INDEX OF SHEETS

SHEET NO.	DESCRIPTION
1	TITLE SHEET
2 - 3	INDEX OF SHEETS, HIGHWAY STANDARDS, AND GENERAL NOTES
4 - 6	SUMMARY OF QUANTITIES
7	TYPICAL SECTIONS
8 - 13	ROADWAY AND PAVEMENT MARKING PLANS
14 - 20	LANDSCAPING DETAILS
21	DETECTOR LOOP REPLACEMENT PLANS
22	DETAILS FOR FRAMES AND LIDS ADJUSTMENT WITH MILLING (BD-08)
23	PAVEMENT PATCHING FOR HMA SURFACED PAVEMENT (BD-22)
24	CURB OR CURB AND GUTTER REMOVAL AND REPLACEMENT (BD-24)
25	BUTT JOINT AND HMA TAPER DETAILS (BD-32)
26	TRAFFIC CONTROL AND PROTECTION FOR SIDE ROADS, INTERSECTIONS, AND DRIVEWAYS (TC-10)
27	TYPICAL APPLICATIONS RAISED REFLECTIVE PAVEMENT MARKERS (SNOW-PLOW RESISTANT) (TC-11)
28	DISTRICT ONE TYPICAL PAVEMENT MARKINGS (TC-13)
29	SHORT TERM PAVEMENT MARKING LETTERS AND SYMBOLS (TC-16)
30	ARTERIAL ROAD INFORMATION SIGN (TC-22)
31	DRIVEWAY ENTRANCE SIGNING (TC-26)
32	DISTRICT ONE STANDARD TRAFFIC SIGNAL DESIGN DETAIL, SHEET 2 OF 7 (TS-05)
33	DISTRICT ONE DETECTOR LOOP INSTALLATION DETAILS FOR ROADWAY RESURFACING (TS-07)

STATE HIGHWAY STANDARDS

STANDARD NO.	DESCRIPTION
000001-08	STANDARD SYMBOLS, ABBREVIATIONS AND PATTERNS
442201-03	CLASS C AND D PATCHES
604001-05	FRAMES AND LIDS TYPE 1
604091-05	FRAME AND GRATE TYPE 24
606001-08	CONCRETE CURB TYPE B AND COMBINATION CONCRETE CURB AND GUTTER
701001-02	OFF-RD OPERATIONS, 2L, 2W, MORE THAN 15' (4.5 m) AWAY
701006-05	OFF-RD OPERATIONS, 2L, 2W, 15' (4.5 m) TO 24" (600 mm) FROM PAVEMENT EDGE
701011-04	OFF-RD MOVING OPERATIONS, 2L, 2W, DAY ONLY
701201-05	LANE CLOSURE, 2L, 2W, DAY ONLY, FOR SPEEDS >= 45 MPH
701301-04	LANE CLOSURE, 2L, 2W, SHORT TIME OPERATIONS
701306-04	LANE CLOSURE, 2L, 2W, SLOW MOVING OPERATIONS DAY ONLY, FOR SPEEDS >= 45 MPH
701311-03	LANE CLOSURE 2L, 2W MOVING OPERATIONS- DAY ONLY
701336-07	LANE CLOSURE, 2L, 2W, WORK AREAS IN SERIES, FOR SPEEDS >= 45 MPH
701502-09	URBAN LANE CLOSURE, 2L, 2W, WITH BIDIRECTIONAL LEFT TURN LANE
701701-10	URBAN LANE CLOSURE, MULTILANE INTERSECTION
701901-08	TRAFFIC CONTROL DEVICES
780001-05	TYPICAL PAVEMENT MARKINGS

GENERAL NOTES

1. THE CONTRACTOR WILL NOT BE ALLOWED TO SET UP A YARD OR FIELD OFFICE ON STATE (or TOLLWAY) PROPERTY WITHOUT WRITTEN PERMISSION FROM THE DEPARTMENT (or ISTHA).
2. ALL MILLED SURFACES SHALL BE A UNIFORM CROSS SLOPE PER LANE AND FREE OF RIDGES BETWEEN PASSES. ANY DEVIATIONS SHALL BE CORRECTED AT NO COST TO THE DEPARTMENT.
3. BUTT JOINTS SHALL BE INSTALLED AT THE ENDS OF ALL RESURFACING (WHERE RESURFACING MEETS EXISTING PAVEMENT) ACCORDING TO THE "BUTT JOINT AND HOT-MIX ASPHALT TAPER DETAILS" SHEET INCLUDED IN THE PLANS, UNLESS OTHERWISE SPECIFIED.
4. ALL PAVEMENT PATCHING LOCATIONS WILL BE DETERMINED IN THE FIELD BY THE ENGINEER.
5. LOCATION OF COMBINATION CONCRETE CURB AND GUTTER REMOVAL AND REPLACEMENT (OR COMBINATION CURB AND GUTTER (THE TYPE SPECIFIED ON THE PLANS)), WILL BE DETERMINED IN THE FIELD BY THE ENGINEER.
6. TEN (10) FOOT TRANSITIONS SHALL BE USED TO MATCH PROPOSED CURB AND GUTTER AND MEDIAN ITEMS OF WORK TO EXISTING CURBS AND GUTTER AND MEDIANS IN THE FIELD, UNLESS OTHERWISE SHOWN.
8. DRAINAGE ADJUSTMENT OR RECONSTRUCTION LOCATIONS WILL BE DETERMINED IN THE FIELD BY THE ENGINEER.
9. IT SHALL BE THE CONTRACTOR'S RESPONSIBILITY TO VERIFY ALL DIMENSIONS AND CONDITIONS EXISTING IN THE FIELD PRIOR TO CONSTRUCTION AND ORDERING OF MATERIALS.
10. FRAMES AND GRATES ADJUSTMENT OF PRIVATE UTILITIES WITHIN THE LIMITS OF THE IMPROVEMENTS SHALL BE DONE BY THEIR RESPECTIVE OWNERS AND ARE NOT PART OF THIS CONTRACT.
12. THE CONTRACTOR SHALL BE REQUIRED TO KEEP A RECORD OF THE LOCATIONS OF PLATED STRUCTURES BY STATION AND OFFSET LEFT OR RIGHT OF THE CENTERLINE OF PAVEMENT.
13. THE CONTRACTOR SHALL BE REQUIRED TO KEEP A RECORD OF THE LOCATIONS OF THE BURIED STRUCTURES ACCORDING TO THE STATION AND DISTANCE LEFT OR RIGHT OF THE CENTERLINE OF PAVEMENT. UPON COMPLETION OF THE WORK, THE CONTRACTOR SHALL DELIVER THE RECORD TO THE ENGINEER.
14. EXISTING BROKEN FRAMES AND LIDS SHALL BE REMOVED AND DISPOSED OF BY THE CONTRACTOR AND SHALL BE REPLACED AS DIRECTED BY THE ENGINEER. REPLACEMENT FRAMES AND LIDS WILL BE PAID FOR ACCORDING TO ARTICLE 109.04 OF THE STANDARD SPECIFICATIONS UNLESS A SEPARATE PAY ITEM HAS BEEN PROVIDED.
16. FOR WORK OUTSIDE THE LIMITS OF BRIDGE APPROACH PAVEMENT, ALL REFERENCES IN THE HIGHWAY STANDARDS AND STANDARD SPECIFICATIONS FOR REINFORCEMENT, DOWEL BARS AND TIE BARS IN PAVEMENT, SHOULDERS, CURB, GUTTER, COMBINATION CURB AND GUTTER AND MEDIAN, AND CHAIR SUPPORTS FOR CRC PAVEMENT, SHALL BE EPOXY COATED, UNLESS NOTED ON THE PLAN.
17. THE CONTRACTOR SHALL CONTACT KALPANA KANNAN-HOSADURGA, THE DISTRICT ONE TRAFFIC CONTROL SUPERVISOR AT KALPANA.KANNAN-HOSADURGA@ILLINOIS.GOV A MINIMUM OF 72 HOURS IN ADVANCE OF BEGINNING WORK.
18. THE ENGINEER SHALL CONTACT ERIC CAMPOS, AREA TRAFFIC FIELD ENGINEER, AT ERIC.CAMPOS@ILLINOIS.GOV A MINIMUM OF TWO (2) WEEKS PRIOR TO THE PLACEMENT OF PERMANENT PAVEMENT MARKINGS.
19. THE CONTRACTOR SHALL BE RESPONSIBLE FOR THE NOTIFICATION OF ALL EMERGENCY SERVICES, SCHOOL DISTRICTS, I.D.O.T.'S COMMUNICATIONS CENTER, SPRINGFIELD TRUCK PERMIT SECTION AND OTHER AGENCIES AFFECTED BY THE CLOSURE. THE CONTRACTOR SHALL ALSO BE RESPONSIBLE FOR POSTING SIGNS THAT WILL INDICATE THE DATES THE CLOSURE WILL BE IN PLACE.
20. PAVEMENT MARKING TAPE, TYPE III SHALL BE USED FOR SHORT TERM PAVEMENT MARKINGS ON ALL FINAL SURFACES.
21. THE "ARTERIAL ROAD INFORMATION SIGN (TC-22)" IS APPLICABLE ONLY TO ARTERIAL ROADS AND SHALL NOT BE APPLIED TO EXPRESSWAYS/TOLLWAYS.

MODEL: Default
 FILE NAME: p:\ultra-new-beach-ly.com\FW\DOT\Documents\DOT Office\Dir\rdet_1\Project\ID128627\CADD\data\Design\ID128627-ah-egenere.dgn

USER NAME = Alin,Parayno	DESIGNED -	REVISED -
	DRAWN -	REVISED -
PLOT SCALE = 100,0000 ' / in.	CHECKED -	REVISED -
PLOT DATE = 5/12/2023	DATE -	REVISED -

**STATE OF ILLINOIS
DEPARTMENT OF TRANSPORTATION**

**IL 113 (COAL CITY ROAD): FROM I-55 TO IL-53
GENERAL NOTES AND INDEX SHEET**

SCALE: 1"= 50" SHEET OF SHEETS STA. TO STA.

F.A.U. RTE.	SECTION	COUNTY	TOTAL SHEETS	SHEET NO.
383	FAU 0383 22 RS	WILL	33	2
				CONTRACT NO. 62T35
		ILLINOIS	FED. AID PROJECT	

GENERAL NOTES (CONTINUED...)

- 22. THE "ROAD CONSTRUCTION AHEAD" SIGNS SHALL REMAIN INSTALLED UNTIL THE COMPLETION OF THE PROJECT OR WHEN NO ROADWAY HAZARDS REMAIN WITHIN THE WORK ZONE.
- 23. ALL SIGNING MUST BE IN ACCORDANCE WITH THE APPLICABLE PROVISIONS OF THE STATE OF ILLINOIS "STANDARD SPECIFICATIONS FOR ROAD AND BRIDGE CONSTRUCTION" ADOPTED JANUARY 1, 2022, THE DETAILS IN THESE PLANS, THE LATEST EDITION OF THE IDOT BUREAU OF DESIGN AND ENVIRONMENT HIGHWAY STANDARDS AND THE LATEST EDITION OF THE MANUAL ON UNIFORM TRAFFIC CONTROL DEVICES.
- 24. OVERNIGHT LANE CLOSURES SHALL NOT BE ALLOWED FOR REHABILITATION PROJECTS INVOLVING DAYTIME MILLING AND RESURFACING OPERATIONS AND CLASS D PATCHING UNLESS OTHER CONDITIONS WARRANT EXTENDED LANE CLOSURES AS DETERMINED AND APPROVED IN WRITING BY THE ENGINEER OR AS PROVIDED FOR IN THE CONTRACT SPECIFICATIONS.
- 25. CONTACT THE IDOT ROADSIDE DEVELOPMENT UNIT AT 847-705-4171 AT LEAST TWO WEEKS PRIOR TO BEGINNING LANDSCAPE AND FORESTRY WORK FOR LAYOUT.
- 26. TREES (3) INCHES OR GREATER IN DIAMETER AT BREAST HEIGHT WILL NOT BE CLEARED BETWEEN APRIL 1 AND OCTOBER 31.
- 27. WITH RAILROAD ENTRY PERMIT AND INSURANCE PROVIDED, EXISTING HMA ROADWAY SHALL BE MILLED AND RESURFACED TO THE EDGE OF THE RAILROAD PANEL.

MODEL: Default
 FILE NAME: p:\uldest-pw-bentley.com\PIV\DOT\Documents\DOT Office\District_1\Project\ID12862\ICADD\data\Design\ID12862-ah-agenccr.dgn

USER NAME = Alin,Parayno	DESIGNED -	REVISED -
	DRAWN -	REVISED -
PLOT SCALE = 100,0000 ' / in.	CHECKED -	REVISED -
PLOT DATE = 5/12/2023	DATE -	REVISED -

**STATE OF ILLINOIS
 DEPARTMENT OF TRANSPORTATION**

**IL 113 (COAL CITY ROAD): FROM I-55 TO IL-53
 GENERAL NOTES AND INDEX SHEET**

SCALE: 1"= 50" SHEET OF SHEETS STA. TO STA.

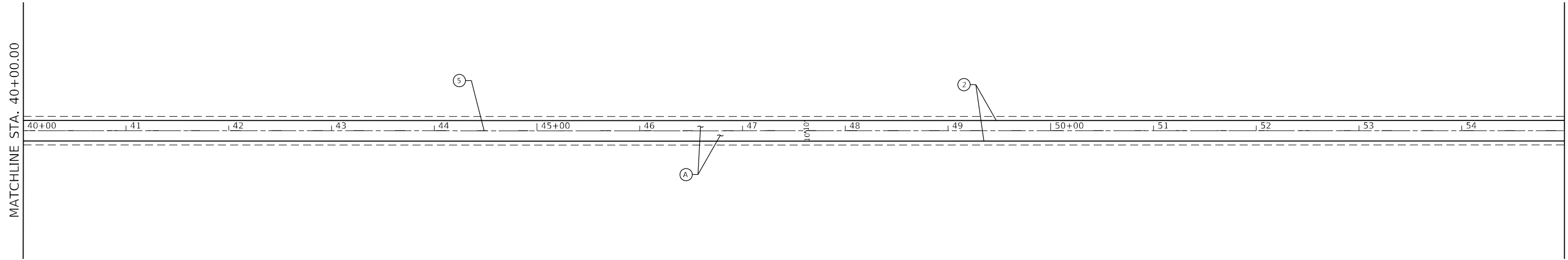
F.A.U. RTE.	SECTION	COUNTY	TOTAL SHEETS	SHEET NO.
383	FAU 0383 22 RS	WILL	33	3
CONTRACT NO. 62T35				
		ILLINOIS	FED. AID PROJECT	

SUMMARY OF QUANTITIES			TOTAL QUANTITIES	CONSTRUCTION TYPE CODE					
CODE NO	ITEM	UNIT		0005 80% FED 20% STATE	0005 100% STATE				
20100110	TREE REMOVAL (6 TO 15 UNITS DIAMETER)	UNIT	15	15					
20100210	TREE REMOVAL (OVER 15 UNITS DIAMETER)	UNIT	59	59					
20101350	TREE PRUNING (OVER 10 INCH DIAMETER)	EACH	7	7					
21101615	TOPSOIL FURNISH AND PLACE, 4"	SO YD	22	22					
25003115	INTERSEEDING, CLASS 1B	ACRE	5.5	5.5					
25100125	MULCH, METHOD 3	ACRE	5.5	5.5					
25200110	SODDING, SALT TOLERANT	SO YD	22	22					
40600290	BITUMINOUS MATERIALS (TACK COAT)	POUND	16319	16319					
40600370	LONGITUDINAL JOINT SEALANT	FOOT	14468	14468					
40600400	MIXTURE FOR CRACKS, JOINTS, AND FLANGEWAYS	TON	55	55					
40600982	HOT-MIX ASPHALT SURFACE REMOVAL - BUTT JOINT	SO YD	182	182					
40604062	HOT-MIX ASPHALT SURFACE COURSE, IL-9.5, MIX "D", N70	TON	3047	3047					
42001300	PROTECTIVE COAT	SO YD	32	32					
44000155	HOT-MIX ASPHALT SURFACE REMOVAL, 1 1/2"	SO YD	36264	36264					
* SPECIALTY ITEMS									

SUMMARY OF QUANTITIES				TOTAL QUANTITIES	CONSTRUCTION TYPE CODE					
CODE NO	ITEM	UNIT	0005 80% FED 20% STATE		0005 100% STATE					
44201765	CLASS D PATCHES, TYPE II, 10 INCH	SO YD	260	260						
44201769	CLASS D PATCHES, TYPE III, 10 INCH	SO YD	390	390						
44201771	CLASS D PATCHES, TYPE IV, 10 INCH	SO YD	975	975						
48102100	AGGREGATE WEDGE SHOULDER, TYPE B	TON	340	340						
60300105	FRAMES AND GRATES TO BE ADJUSTED	EACH	6	6						
67100100	MOBILIZATION	L SUM	1	1						
70100450	TRAFFIC CONTROL AND PROTECTION, STANDARD 701201	L SUM	1	1						
70100460	TRAFFIC CONTROL AND PROTECTION, STANDARD 701306	L SUM	1	1						
70100600	TRAFFIC CONTROL AND PROTECTION, STANDARD 701336	L SUM	1	1						
70102622	TRAFFIC CONTROL AND PROTECTION, STANDARD 701502	L SUM	1	1						
70102635	TRAFFIC CONTROL AND PROTECTION, STANDARD 701701	L SUM	1	1						
70300100	SHORT TERM PAVEMENT MARKING	FOOT	5927	5927						

SUMMARY OF QUANTITIES			TOTAL QUANTITIES	CONSTRUCTION TYPE CODE					TOTAL QUANTITIES	CONSTRUCTION TYPE CODE							
CODE NO	ITEM	UNIT		0005 80% FED 20% STATE	0005 100% STATE						0005 80% FED 20% STATE	0005 100% STATE					
70300150	SHORT TERM PAVEMENT MARKING REMOVAL	SO FT	2964	2964					* 78000650	THERMOPLASTIC PAVEMENT MARKING - LINE 24"	FOOT	133	133				
70300211	TEMPORARY PAVEMENT MARKING LETTERS AND SYMBOLS - PAINT	SO FT	208	208					* 78100100	RAISED REFLECTIVE PAVEMENT MARKER	EACH	372	372				
70300221	TEMPORARY PAVEMENT MARKING - LINE 4"- PAINT	FOOT	34746	34746					78300200	RAISED REFLECTIVE PAVEMENT MARKER REMOVAL	EACH	298	298				
70300241	TEMPORARY PAVEMENT MARKING - LINE 6"- PAINT	FOOT	726	726					* 78300202	PAVEMENT MARKING REMOVAL - WATER BLASTING	SO FT	13102	13102				
70300261	TEMPORARY PAVEMENT MARKING - LINE 12"- PAINT	FOOT	683	683					* 88600600	DETECTOR LOOP REPLACEMENT	FOOT	100	100				
70300281	TEMPORARY PAVEMENT MARKING - LINE 24"- PAINT	FOOT	133	133					K0029618	WEED CONTROL, BROADLEAF IN TURF	GALLON	1	1				
70306120	TEMPORARY PAVEMENT MARKING - LINE 4" - TYPE III TAPE	FOOT	2964	2964					K1004595	PRUNING FOR SAFETY AND EQUIPMENT CLEARANCE	L SUM	1	1				
* 78000100	THERMOPLASTIC PAVEMENT MARKING - LETTERS AND SYMBOLS	SO FT	208	208					X0325222	WEED CONTROL, BASAL TREATMENT	GALLON	50	50				
* 78000200	THERMOPLASTIC PAVEMENT MARKING - LINE 4"	FOOT	34746	34746					X0327120	WEED CONTROL, NATIVE LANDSCAPE ENHANCEMENT	ACRE	5.5	5.5				
* 78000400	THERMOPLASTIC PAVEMENT MARKING - LINE 6"	FOOT	726	726					X2010350	TREE REMOVAL, ACRES (SPECIAL)	ACRE	3.75	3.75				
* 78000600	THERMOPLASTIC PAVEMENT MARKING - LINE 12"	FOOT	683	683					X2020110	GRADING AND SHAPING SHOULDERS	UNIT	239	239				
									X4400501	COMBINATION CURB AND GUTTER REMOVAL AND REPLACEMENT LESS THAN OR EQUAL TO 10 FEET	FOOT	75	75				
									X4400503	COMBINATION CURB AND GUTTER REMOVAL AND REPLACEMENT GREATER THAN 10 FEET	FOOT	20	20				
	* SPECIALTY ITEMS																

IL 113 (W. COAL CITY RD.)



PROPOSED PAVEMENT STRIPING LEGEND

* = PROP. THERMOPLASTIC PAVEMENT MARKING -

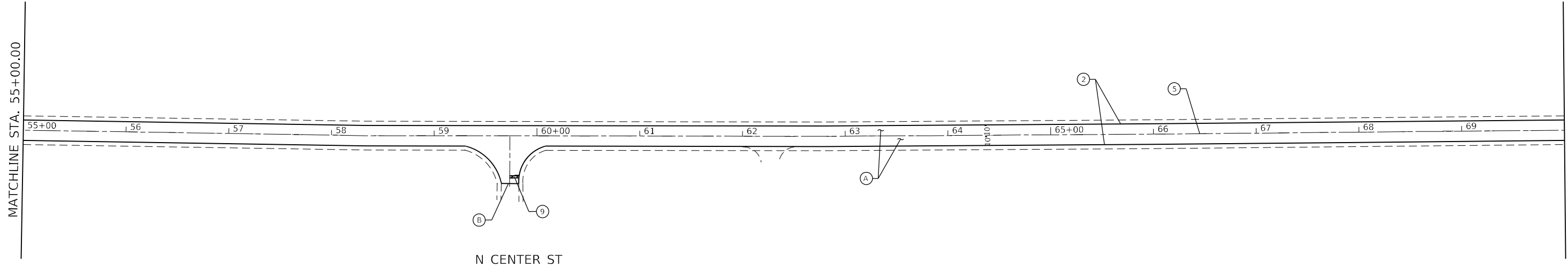
① * LETTERS & SYMBOLS, 8", SOLID, WHITE (TYP.)	⑥ * LINE 6" SKIP-DASH WHITE, 2' DASH - 6' SKIP (TYP.)
② * LINE 4" SOLID WHITE (TYP.)	⑦ * LINE 6" SOLID WHITE, TURN LANE (TYP.)
③ * LINE 4" SOLID YELLOW (TYP.)	⑧ * LINE 12", YELLOW PAINTED MEDIAN DIAGONAL, 45°, (TYP.)
④ * LINE 4" DOUBLE SOLID YELLOW, 2 @ 11" C-C (TYP.)	⑨ * LINE 24" SOLID WHITE STOP BAR (TYP.)
⑤ * LINE 4" 10' DASH - 30' SKIP, YELLOW (TYP.)	

INSTALL FINAL PAVEMENT MARKINGS AND RAISED REFLECTIVE MARKERS PER DISTRICT DETAIL TC-11 AND TC-13.
FOR RAILROAD CROSSING RELATED PAVEMENT STRIPING, INSTALL PER HIGHWAY STANDARD 780001-05

PROPOSED ROADWAY WORK

Ⓐ	PROP. HMA SURF REM 1 1/2" PROP. HMA SC IL-9.5 D N70, 1 1/2"
Ⓑ	PROP. HMA SURF REM BUTT JT (LIMIT OF RESURFACING)

IL 113 (W. COAL CITY RD.)



MODEL: Default
FILE: \\mde\p\sub\sect-pw\benefit\com\p\w\DOT\Documents\DOT Office\Dir\rdct_1\Project\113\623\CAD\data\Design\113\623\sh-113n2.dgn

USER NAME = Alan.Parayno	DESIGNED -	REVISED -	
	DRAWN -	REVISED -	
PLOT SCALE = 100,0000' / in.	CHECKED -	REVISED -	
PLOT DATE = 5/12/2023	DATE -	REVISED -	

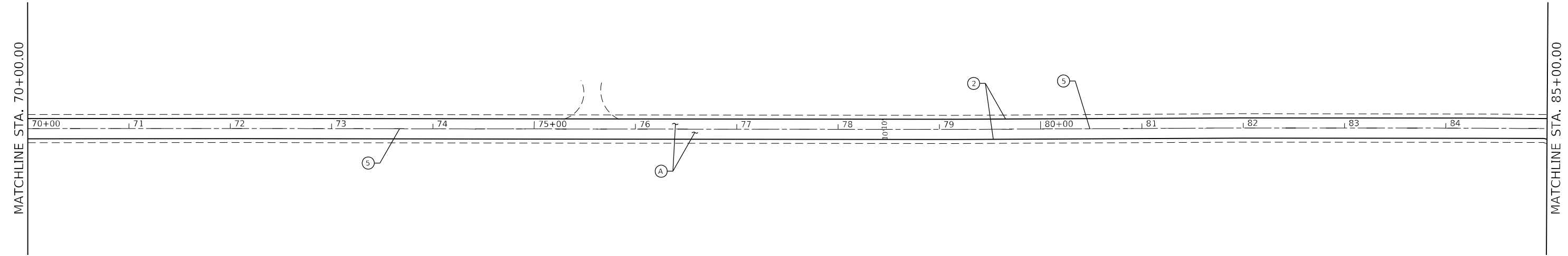
**STATE OF ILLINOIS
DEPARTMENT OF TRANSPORTATION**

ROADWAY PLAN			
IL 113 (COAL CITY ROAD): FROM I-55 TO IL-53			
SCALE:	SHEET	OF SHEETS	STA. TO STA.

F.A.U. RTE.	SECTION	COUNTY	TOTAL SHEETS	SHEET NO.
383	FAU 0383 22 RS	WILL	33	9
			CONTRACT NO. 62335	
		ILLINOIS FED. AID PROJECT		



IL 113 (W. COAL CITY RD.)



PROPOSED PAVEMENT STRIPING LEGEND

* = PROP. THERMOPLASTIC PAVEMENT MARKING -

① * LETTERS & SYMBOLS, 8", SOLID, WHITE (TYP.)	⑥ * LINE 6" SKIP-DASH WHITE, 2' DASH - 6' SKIP (TYP.)
② * LINE 4" SOLID WHITE (TYP.)	⑦ * LINE 6" SOLID WHITE, TURN LANE (TYP.)
③ * LINE 4" SOLID YELLOW (TYP.)	⑧ * LINE 12", YELLOW PAINTED MEDIAN DIAGONAL, 45°, (TYP.)
④ * LINE 4" DOUBLE SOLID YELLOW, 2 @ 11" C-C (TYP.)	⑨ * LINE 24" SOLID WHITE STOP BAR (TYP.)
⑤ * LINE 4" 10' DASH - 30' SKIP, YELLOW (TYP.)	

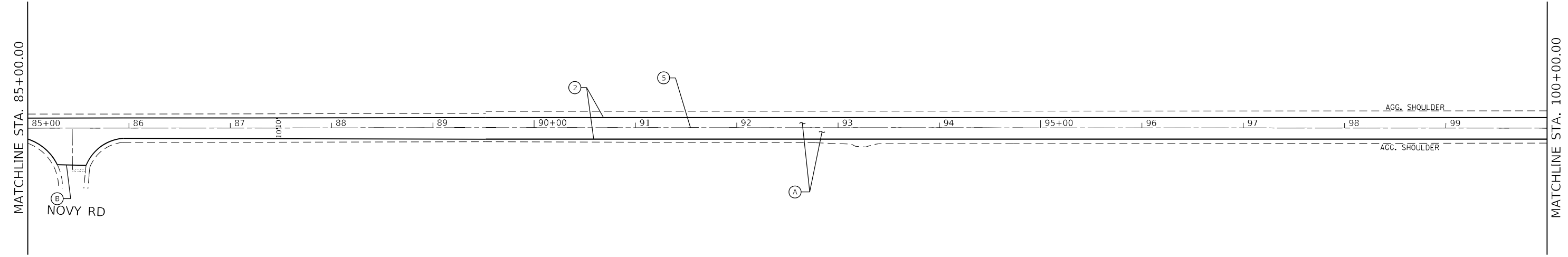
INSTALL FINAL PAVEMENT MARKINGS AND RAISED REFLECTIVE MARKERS PER DISTRICT DETAIL TC-11 AND TC-13.
FOR RAILROAD CROSSING RELATED PAVEMENT STRIPING, INSTALL PER HIGHWAY STANDARD 780001-05

PROPOSED ROADWAY WORK

Ⓐ	PROP. HMA SURF REM 1 1/2"
	PROP. HMA SC IL-9.5 D N70, 1 1/2"
Ⓑ	PROP. HMA SURF REM BUTT JT (LIMIT OF RESURFACING)



IL 113 (W. COAL CITY RD.)



MODEL: Default
FILE: \\mfr-pw-bentley.com\PW\DOT\Documents\DOT Office\District 11\Project\1128622\CaddData\Design\1128622-shr-lan2.dgn

USER NAME = Alan.Parayno	DESIGNED -	REVISED -
	DRAWN -	REVISED -
PLOT SCALE = 100,0000' / in.	CHECKED -	REVISED -
PLOT DATE = 5/12/2023	DATE -	REVISED -

**STATE OF ILLINOIS
DEPARTMENT OF TRANSPORTATION**

ROADWAY PLAN
IL 113 (COAL CITY ROAD): FROM I-55 TO IL-53

SCALE: SHEET OF SHEETS STA. TO STA.

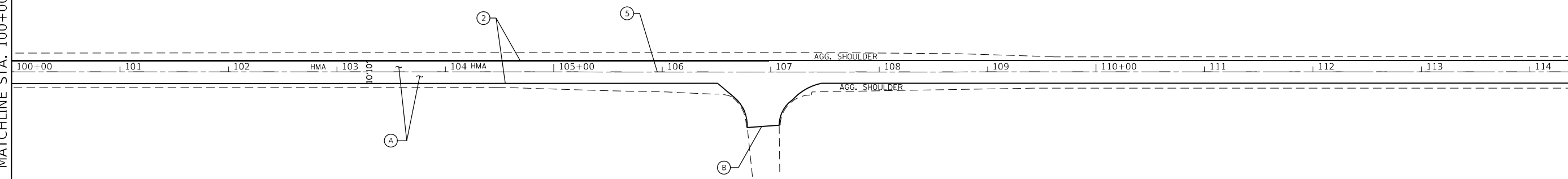
F.A.U. RTE.	SECTION	COUNTY	TOTAL SHEETS	SHEET NO.
383	FAU 0383 22 RS	WILL	33	10
ILLINOIS FED. AID PROJECT			CONTRACT NO. 62T35	



IL 113 (W. COAL CITY RD.)

MATCHLINE STA. 100+00.00

MATCHLINE STA. 115+00.00



PROPOSED PAVEMENT STRIPING LEGEND

* = PROP. THERMOPLASTIC PAVEMENT MARKING -

- ① * LETTERS & SYMBOLS, 8", SOLID, WHITE (TYP.)
- ② * LINE 4" SOLID WHITE (TYP.)
- ③ * LINE 4" SOLID YELLOW (TYP.)
- ④ * LINE 4" DOUBLE SOLID YELLOW, 2 @ 11" C-C (TYP.)
- ⑤ * LINE 4" 10" DASH - 30" SKIP, YELLOW (TYP.)
- ⑥ * LINE 6" SKIP-DASH WHITE, 2' DASH - 6' SKIP (TYP.)
- ⑦ * LINE 6" SOLID WHITE, TURN LANE (TYP.)
- ⑧ * LINE 12", YELLOW PAINTED MEDIAN DIAGONAL, 45°, (TYP.)
- ⑨ * LINE 24" SOLID WHITE STOP BAR (TYP.)

INSTALL FINAL PAVEMENT MARKINGS AND RAISED REFLECTIVE MARKERS PER DISTRICT DETAIL TC-11 AND TC-13. FOR RAILROAD CROSSING RELATED PAVEMENT STRIPING, INSTALL PER HIGHWAY STANDARD 780001-05

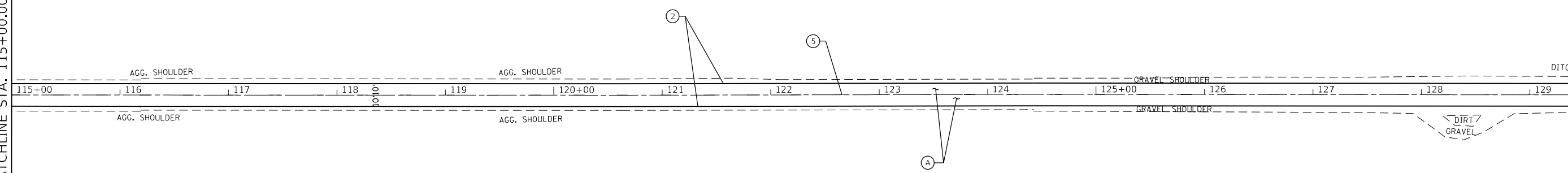
PROPOSED ROADWAY WORK

- A PROP. HMA SURF REM 1 1/2"
PROP. HMA SC IL-9.5 D N70, 1 1/2"
- B PROP. HMA SURF REM BUTT JT
(LIMIT OF RESURFACING)

IL 113 (W. COAL CITY RD.)

MATCHLINE STA. 115+00.00

MATCHLINE STA. 130+00.00



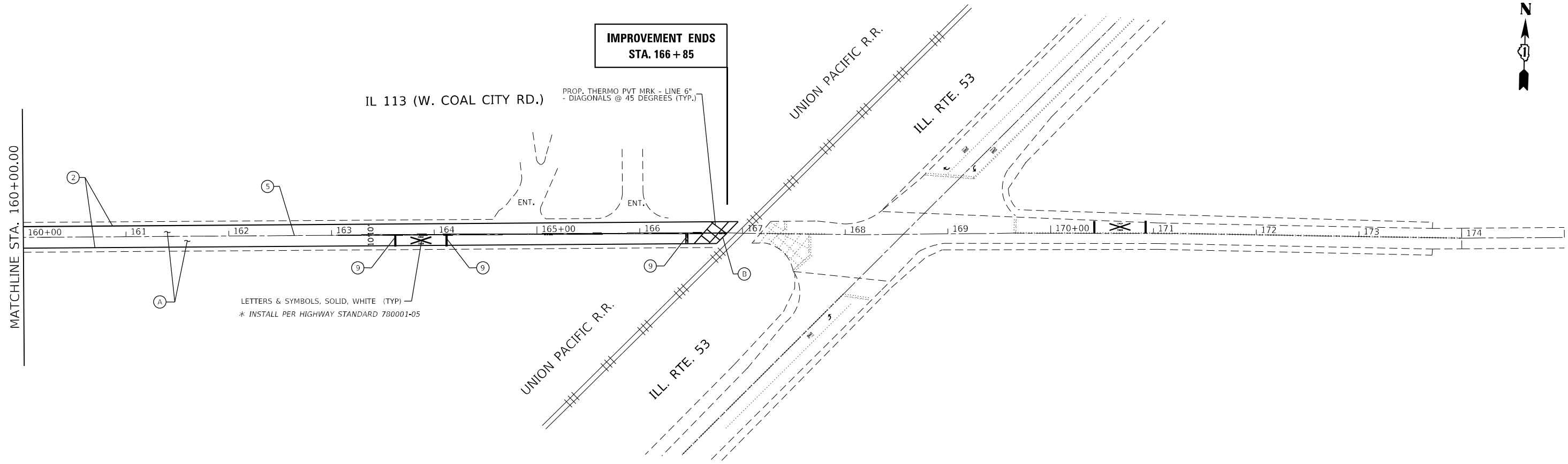
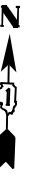
MODEL Default
FILE NAME: p:\subsect-pw-bentley.com\p\w\dot\Documents\DOT Office\Stratet. 1\Project\113662\113662\113662-113662-113662.dgn

USER NAME = Alan.Parayno	DESIGNED -	REVISED -
DRAWN -	REVISIONS -	
PLOT SCALE = 100,0000' / in.	CHECKED -	REVISIONS -
PLOT DATE = 5/12/2023	DATE -	REVISIONS -

**STATE OF ILLINOIS
DEPARTMENT OF TRANSPORTATION**

ROADWAY PLAN			
IL 113 (COAL CITY ROAD); FROM I-55 TO IL-53			
SCALE:	SHEET	OF SHEETS	STA. TO STA.

F.A.U. RTE.	SECTION	COUNTY	TOTAL SHEETS	SHEET NO.
383	FAU 0383 22 RS	WILL	33	11
CONTRACT NO. 62T35				
ILLINOIS FED. AID PROJECT				



LETTERS & SYMBOLS, SOLID, WHITE (TYP.)
 * INSTALL PER HIGHWAY STANDARD 780001-05

PROPOSED PAVEMENT STRIPING LEGEND

* = PROP. THERMOPLASTIC PAVEMENT MARKING -

- ① * LETTERS & SYMBOLS, 8", SOLID, WHITE (TYP.)
- ② * LINE 4" SOLID WHITE (TYP.)
- ③ * LINE 4" SOLID YELLOW (TYP.)
- ④ * LINE 4" DOUBLE SOLID YELLOW, 2 @ 11" C-C (TYP.)
- ⑤ * LINE 4" 10' DASH - 30' SKIP, YELLOW (TYP.)
- ⑥ * LINE 6" SKIP-DASH WHITE, 2' DASH - 6' SKIP (TYP.)
- ⑦ * LINE 6" SOLID WHITE, TURN LANE (TYP.)
- ⑧ * LINE 12", YELLOW PAINTED MEDIAN DIAGONAL, 45°, (TYP.)
- ⑨ * LINE 24" SOLID WHITE STOP BAR (TYP.)

INSTALL FINAL PAVEMENT MARKINGS AND RAISED REFLECTIVE MARKERS PER DISTRICT DETAIL TC-11 AND TC-13.
 FOR RAILROAD CROSSING RELATED PAVEMENT STRIPING, INSTALL PER HIGHWAY STANDARD 780001-05

PROPOSED ROADWAY WORK

- Ⓐ PROP. HMA SURF REM 1 1/2"
PROP. HMA SC IL-9.5 D N70, 1 1/2"
- Ⓑ PROP. HMA SURF REM BUTT JT
(LIMIT OF RESURFACING)

MODEL: Default
 FILE: Mainfile.pxl
 SUBJECT: new_benefit.com:PIV\DOT\Documents\DOT Office\District: 11\Project\1128622\CADD\data\Design\1128622-ah-1a.mxd.dgn

USER NAME = Alan.Parayno	DESIGNED -	REVISED -
	DRAWN -	REVISED -
PLOT SCALE = 100,0000' / in.	CHECKED -	REVISED -
PLOT DATE = 5/12/2023	DATE -	REVISED -

**STATE OF ILLINOIS
 DEPARTMENT OF TRANSPORTATION**

ROADWAY PLAN			
IL 113 (COAL CITY ROAD): FROM I-55 TO IL-53			
SCALE:	SHEET	OF SHEETS	STA. TO STA.

F.A.U. RTE.	SECTION	COUNTY	TOTAL SHEETS	SHEET NO.
383	FAU 0383 22 RS	WILL	33	13
CONTRACT NO. 62T35				
ILLINOIS FED. AID PROJECT				

April 2023 start

Landscape Operations Calendar **Contract 62T35**
Coal City Rd **Limits: from I-55 to IL 53**

Dates of Work	Key	Code	Description	Unit	SP	Quantity
November 1 - March 31		K1004595	PRUNING FOR SAFETY AND EQUIPMENT CLEARANCE	L SUM	*	1.00
		X0325222	WEED CONTROL, BASAL TREATMENT **	GALLON	*	50.00
November 1 - April 15	BLUE	20101350	TREE PRUNING (OVER 10 INCH DIA)	EACH		7.00
November 1 - March 31	RED	20100110	TREE REMOVAL (6 TO 15 UNITS DIAMETER)	UNIT		14.50
November 1 - March 31		20100210	TREE REMOVAL (OVER 15 UNITS DIAMETER)	UNIT		59.00
November 1 - March 31	ORANGE	X2010350	TREE REMOVAL, ACRE (SPECIAL)	ACRE	*	3.66
April 1 - April 15		X0327120	WEED CONTROL, NATIVE LANDSCAPE ENHANCEMENT	ACRE	*	3.66
May 1 - June 15 August 1 - October 31		25003115	INTERSEEDING, CLASS 1B	ACRE		3.66
		25100125	MULCH METHOD 3	ACRE		3.66
November 1 - March 31	YELLOW	Z0064800	SELECTIVE CLEARING	UNIT	*	73.00
April 1 - April 15		X0327120	WEED CONTROL, NATIVE LANDSCAPE ENHANCEMENT	ACRE	*	1.67
May 1 - June 15 August 1 - October 31		25003115	INTERSEEDING, CLASS 1B	ACRE		1.67
		25100125	MULCH METHOD 3	ACRE		1.67
April 1 - June 15 September - October 31		K0029618	WEED CONTROL, BROADLEAF IN TURF **	GALLON	*	1.00
			* Special Provision			
			** Work as directed by the Engineer			

NOTE:

THE TOTAL OF THE QUANTITIES FOR EACH OF THE SPECIFIC PAY ITEMS ON THIS SHEET ARE EXPRESSED IN THE SOQ SHEETS AS VALUES TAKEN TO THE APPROPRIATE DEGREE OF ACCURACY FOR THE TYPE OF PAY ITEM, ACCORDING TO BDE MANUAL SECTION 64.1.04, "UNITS OF MEASUREMENT", AND THE CHARTS IN FIGURE 64-1.A.

MODEL: Default
 FILE: \\blmfe-pw-bentley.com\PW\DOT\Documents\DOT Office\Dir\rdet_1\Project\1128623\CADD\Drawings\1128623-ah-landscape.dgn

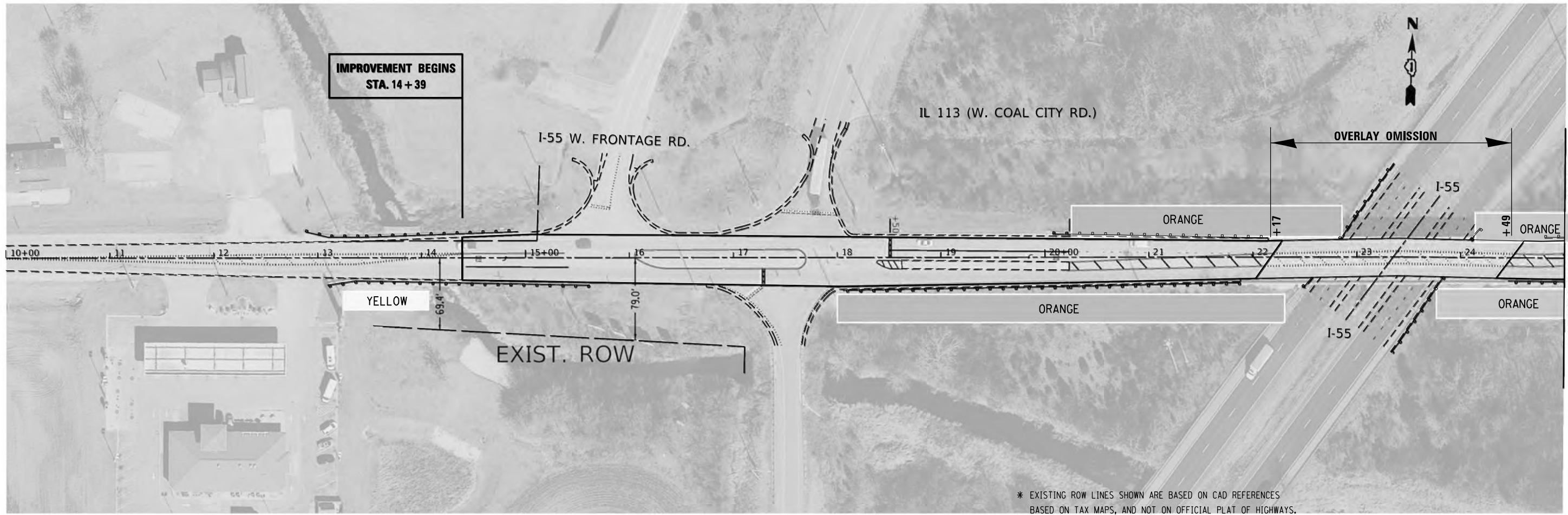
USER NAME = Alan.Parayno	DESIGNED -	REVISED -
	DRAWN -	REVISED -
PLOT SCALE = 100,0000' / in.	CHECKED -	REVISED -
PLOT DATE = 5/12/2023	DATE -	REVISED -

**STATE OF ILLINOIS
DEPARTMENT OF TRANSPORTATION**

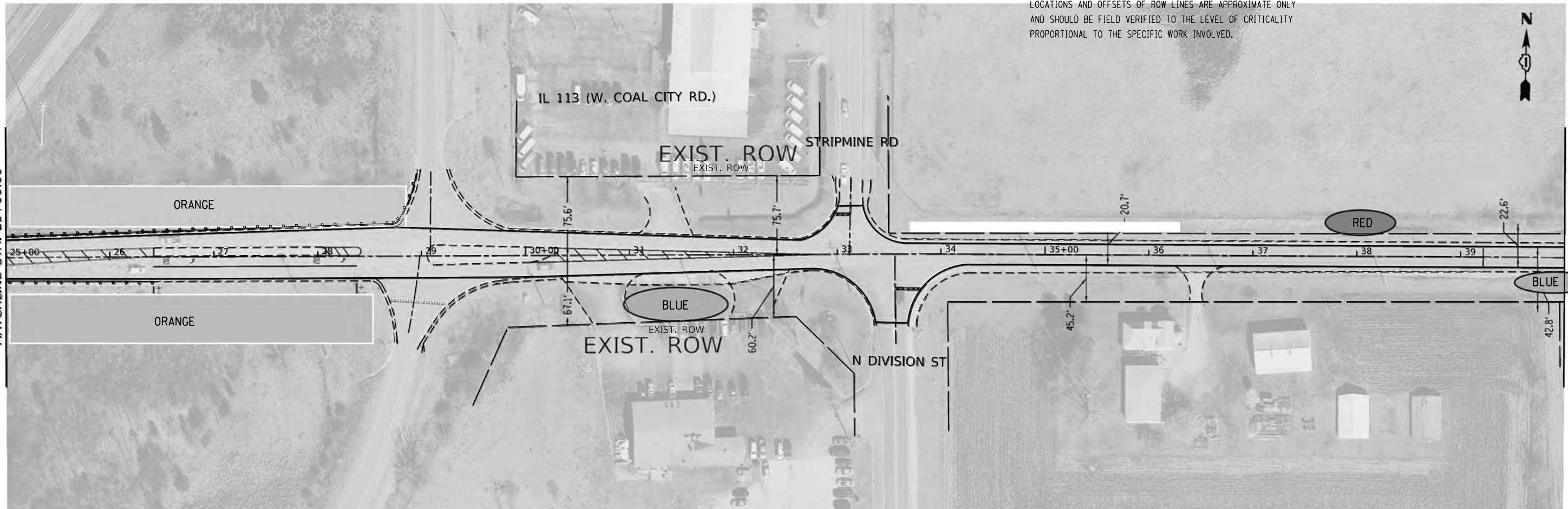
**LANDSCAPING PLAN
IL 113 (COAL CITY ROAD): FROM I-55 TO IL-53**

SCALE: 1"=50' SHEET OF SHEETS STA. TO STA.

F.A.U. RTE.	SECTION	COUNTY	TOTAL SHEETS	SHEET NO.
383	FAU 0383 22 RS	WILL	33	14
			CONTRACT NO. 62T35	
		ILLINOIS	FED. AID PROJECT	



* EXISTING ROW LINES SHOWN ARE BASED ON CAD REFERENCES BASED ON TAX MAPS, AND NOT ON OFFICIAL PLAT OF HIGHWAYS. LOCATIONS AND OFFSETS OF ROW LINES ARE APPROXIMATE ONLY AND SHOULD BE FIELD VERIFIED TO THE LEVEL OF CRITICALITY PROPORTIONAL TO THE SPECIFIC WORK INVOLVED.



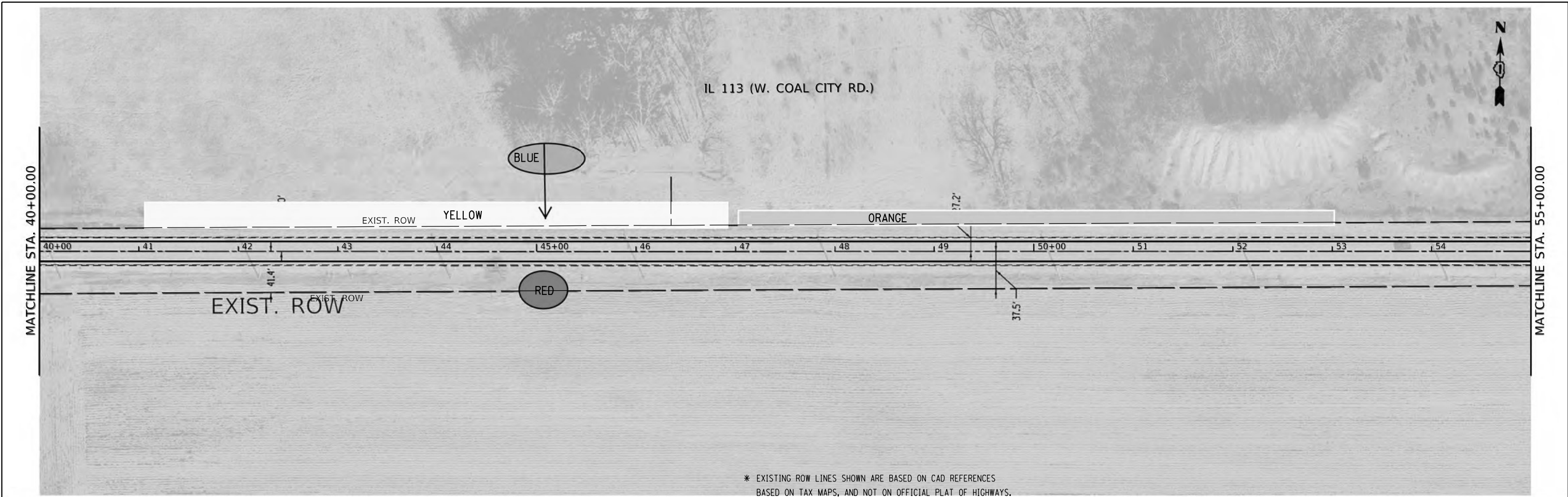
MODEL: Default
FILE: \bldg\paw\bea\paw.com\PIV\DOT\Documents\DOT Office\Strider - 11\Project\1128622\CADD\data\Design\1128622-ah-lan-ldsc-pln.dgn

USER NAME = Alan.Parayno	DESIGNED -	REVISED -
PLOT SCALE = 100,0000' / in.	DRAWN -	REVISED -
PLOT DATE = 5/12/2023	CHECKED -	REVISED -
	DATE -	REVISED -

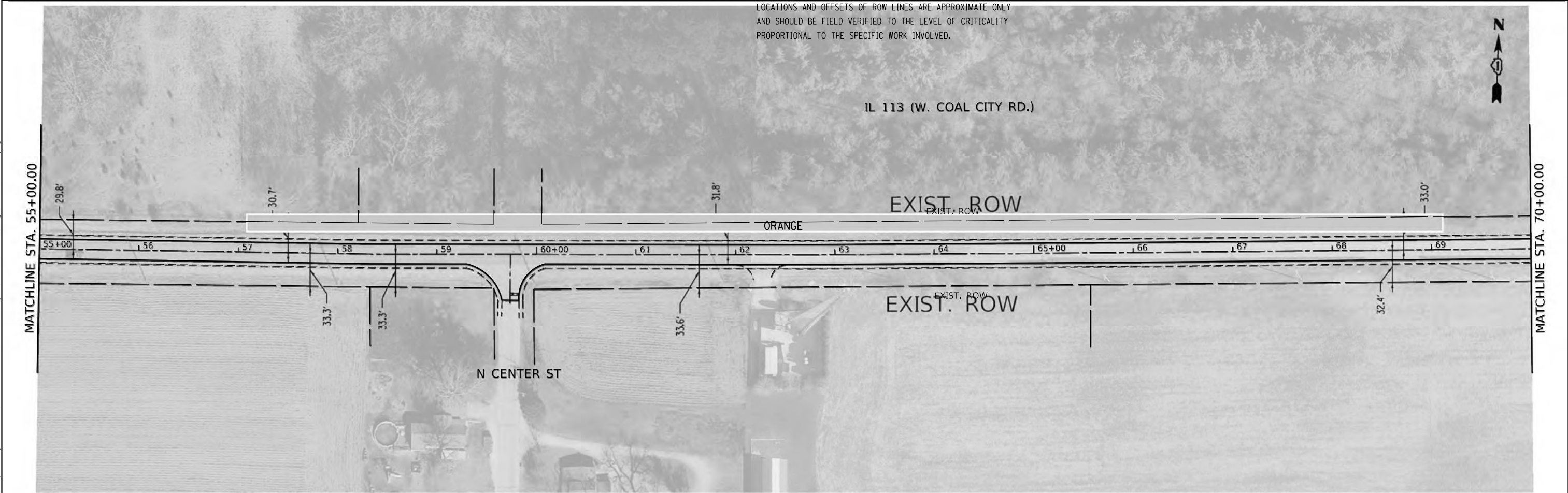
**STATE OF ILLINOIS
DEPARTMENT OF TRANSPORTATION**

LANDSCAPING PLAN			
IL 113 (COAL CITY ROAD); FROM I-55 TO IL-53			
SCALE:	SHEET	OF SHEETS	STA. TO STA.

F.A.U. RTE.	SECTION	COUNTY	TOTAL SHEETS	SHEET NO.
383	FAU 0383 22 RS	WILL	33	15
ILLINOIS FED. AID PROJECT			CONTRACT NO. 62T35	



* EXISTING ROW LINES SHOWN ARE BASED ON CAD REFERENCES
 BASED ON TAX MAPS, AND NOT ON OFFICIAL PLAT OF HIGHWAYS.
 LOCATIONS AND OFFSETS OF ROW LINES ARE APPROXIMATE ONLY
 AND SHOULD BE FIELD VERIFIED TO THE LEVEL OF CRITICALITY
 PROPORTIONAL TO THE SPECIFIC WORK INVOLVED.



MODEL: Default
 FILE: \\mfrs-pw-beadley.com\P\DOT\Documents\DOT Office\Dir\rdet_1\Project\1138622\Cadd\Drawings\1138622-ah-landscp.dgn

USER NAME = Alan.Parayno	DESIGNED -	REVISED -
PLOT SCALE = 100,0000' / in.	DRAWN -	REVISED -
PLOT DATE = 5/12/2023	CHECKED -	REVISED -
	DATE -	REVISED -

STATE OF ILLINOIS
DEPARTMENT OF TRANSPORTATION

LANDSCAPING PLAN				
IL 113 (COAL CITY ROAD); FROM I-55 TO IL-53				
SCALE:	SHEET	OF	SHEETS	STA. TO STA.

F.A.U. RTE.	SECTION	COUNTY	TOTAL SHEETS	SHEET NO.
383	FAU 0383 22 RS	WILL	33	16
CONTRACT NO. 62T35				
ILLINOIS FED. AID PROJECT				



IL 113 (W. COAL CITY RD.)

MATCHLINE STA. 70+00.00

EXIST. ROW

EXIST. ROW

ORANGE

70+00 71 72 73 74 75+00 76 77 78 79 80+00 81 82 83 84

EXIST. ROW

32.7'

32.8'

31.8'

34.0'

MATCHLINE STA. 85+00.00

* EXISTING ROW LINES SHOWN ARE BASED ON CAD REFERENCES
BASED ON TAX MAPS, AND NOT ON OFFICIAL PLAT OF HIGHWAYS.
LOCATIONS AND OFFSETS OF ROW LINES ARE APPROXIMATE ONLY
AND SHOULD BE FIELD VERIFIED TO THE LEVEL OF CRITICALITY
PROPORTIONAL TO THE SPECIFIC WORK INVOLVED.



IL 113 (W. COAL CITY RD.)

MATCHLINE STA. 85+00.00

EXIST. ROW

EXIST. ROW

ORANGE

85+00 86 87 88 89 90+00 91 92 93 94 95+00 96 97 98 99

EXIST. ROW

EXIST. ROW

NOVY RD

33.2'

34.5'

33.5'

34.1'

34.2'

33.2'

MATCHLINE STA. 100+00.00

MODEL: Default
FILE: Mainfile.pxd
Subject: new_bentley.com:PIV\DOT\Documents\DOT Office\Dir\dir: 1\Project\10128622\CADD\DATA\Design\10128622-ah-lan-ldsc.dgn

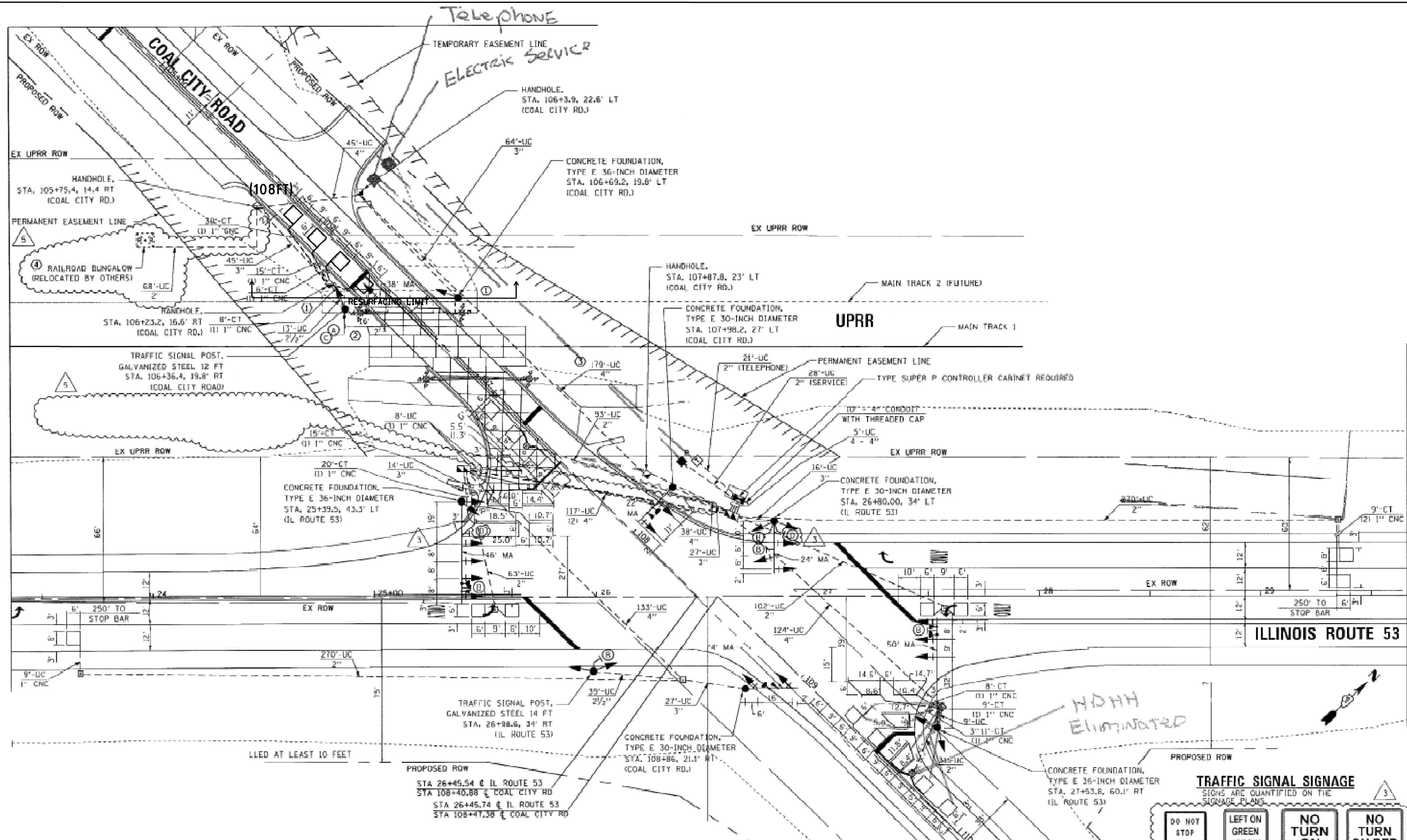
USER NAME = Alan.Parayno	DESIGNED -	REVISED -
PLOT SCALE = 100,0000' / in.	DRAWN -	REVISED -
PLOT DATE = 5/12/2023	CHECKED -	REVISED -
	DATE -	REVISED -

STATE OF ILLINOIS
DEPARTMENT OF TRANSPORTATION

LANDSCAPING PLAN
IL 113 (COAL CITY ROAD): FROM I-55 TO IL-53

SCALE: SHEET OF SHEETS STA. TO STA.

F.A.U. RTE.	SECTION	COUNTY	TOTAL SHEETS	SHEET NO.
383	FAU 0383 22 RS	WILL	33	17
ILLINOIS FED. AID PROJECT			CONTRACT NO. 62T35	



NOTES:

- 1.- WORK SHALL MEET THE REQUIREMENTS OF THE SPECIAL PROVISION, DETECTOR LOOP REPLACEMENT AND/OR INSTALLATION (ROADWAY GRINDING, RESURFACING & PATCHING OPERATIONS).
- 2.- THIS PLAN IS FOR THE SOLE PURPOSE OF DETECTOR LOOP REPLACEMENT.

REPLACE ALL DETECTOR LOOPS AS SHOWN (WITHIN THE RESURFACING LIMITS)

CODE	ITEM	QUANTITY	UNIT	
88600600	DETECTOR LOOP REPLACEMENT	108	FOOT	TS#11142

USER NAME = Gonzalo Meza	DESIGNED - Steven M. Nguyen	REVISED -
	DRAWN - Gonzalo Meza	REVISED -
PLOT SCALE = 40.0000' / 1"	CHECKED - Steven M. Nguyen	REVISED -
PLOT DATE = 4/5/2023	DATE - 04/04/2023	REVISED -

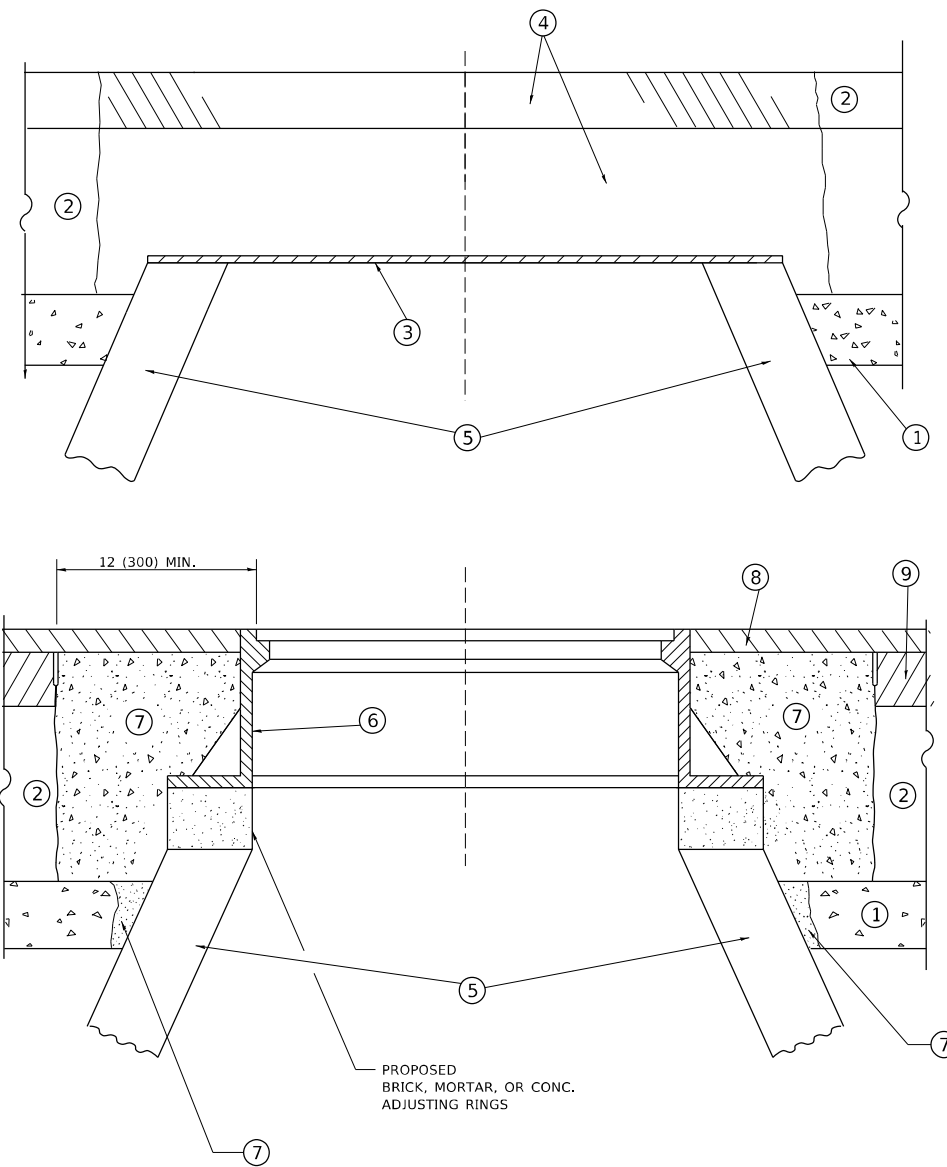
**STATE OF ILLINOIS
DEPARTMENT OF TRANSPORTATION**

**DETECTOR LOOP REPLACEMENT PLAN
IL 113 AT IL-53**

SCALE: SHEET OF SHEETS STA. TO STA.

F.A. RTE.	SECTION	COUNTY	TOTAL SHEETS	SHEET NO.
383	FAU 0383 22 R5	WILL	33	21
ILLINOIS FED. AID PROJECT			CONTRACT NO. 62T35	

MODEL: Default
 FILE NAME: p:\w\p\dw\benitez.com\PROJECTS\Traffic\Detector Loops\DW\113 IL-53 at IL-113 @ IL-53.dwg
 PROJECT: Traffic\Detector Loops\DW\113 IL-53 at IL-113 @ IL-53.dwg
 OFFICE: Benitez



**DETAILS FOR FRAMES AND LIDS ADJUSTMENT
WITH MILLING**

NOTES

1. EXISTING BROKEN FRAMES AND LIDS SHALL BE REMOVED AND DISPOSED OF BY THE CONTRACTOR AND SHALL BE REPLACED AS DIRECTED BY THE ENGINEER. REPLACEMENT FRAMES AND LIDS WILL BE PAID FOR IN ACCORDANCE WITH ARTICLE 109.04 OF THE STANDARD SPECIFICATIONS UNLESS A SEPARATE PAY ITEM HAS BEEN PROVIDED.
2. IF THE EXISTING LIDS ARE OPEN, THE FRAME WILL BE ADJUSTED TO THE ELEVATION OF THE MILLED PAVEMENT SURFACE PRIOR TO THE MILLING OPERATION. THE FRAME WILL NOT BE REMOVED AND COVERED BY THE METAL PLATE.
3. CITY OF CHICAGO CASTINGS ARE THE PROPERTY OF THE CITY AND THE CONTRACTOR SHALL NOTIFY THE CITY FOR REMOVAL AND DISPOSITION OF THE CASTINGS.
4. THE METAL PLATE USED TO COVER THE STRUCTURE SHALL REMAIN THE PROPERTY OF THE CONTRACTOR.

CONSTRUCTION PROCEDURES

STAGE 1 (BEFORE PAVEMENT MILLING)

- A) REMOVE A MINIMUM OF 12 (300) OF THE PAVEMENT FROM AROUND THE STRUCTURE.
- B) REMOVE THE EXISTING FRAME AND LID FROM THE STRUCTURE.
- C) COVER THE STRUCTURE OPENING WITH A 36 (900) DIAMETER METAL PLATE.
- D) BACKFILL WITH CRUSHED STONE AND HMA SURFACE MIX APPROVED BY THE ENGINEER. (MIN. 1 1/2 (40) HMA TO REMAIN AFTER MILLING).

STAGE 2 (AFTER PAVEMENT MILLING)

- A) REMOVE THE HMA SURFACE MIX AND CRUSHED STONE.
- B) INSTALL THE FRAME AND LID; ADJUST THE FRAME TO ITS FINAL SURFACE ELEVATION.
- C) THE SURROUNDING SPACE SHALL BE FILLED WITH CLASS*PP-1 CONCRETE TO THE ELEVATION OF THE SURFACE OF THE EXISTING BASE COURSE OR THE BINDER COURSE.

* UNLESS OTHERWISE SPECIFIED IN THE PLANS.

THE PROCEDURE EXPLAINED ABOVE SHALL CONFORM TO THE APPLICABLE PORTIONS OF SECTIONS 353, 406, 602, AND 603 OF THE STANDARD SPECIFICATIONS EXCEPT THAT "THE CONTRACTOR SHALL ADJUST THE STRUCTURES TO THE FINISHED PAVEMENT ELEVATION NO MORE THAN 5 CALENDAR DAYS PRIOR TO PLACEMENT OF THE FINAL LIFT OF SURFACE UNLESS APPROVED BY THE ENGINEER."

LEGEND

- | | |
|--|-------------------------------|
| ① SUB-BASE GRANULAR MATERIAL | ⑥ FRAME AND LID (SEE NOTES) |
| ② EXISTING PAVEMENT | ⑦ CLASS*PP-1 CONCRETE |
| ③ 36 (900) DIAMETER METAL PLATE | ⑧ PROPOSED HMA SURFACE COURSE |
| ④ PROPOSED CRUSHED STONE AND HMA SURFACE MIX | ⑨ PROPOSED HMA BINDER COURSE |
| ⑤ EXISTING STRUCTURE | |

LOCATION OF STRUCTURES

THE CONTRACTOR WILL BE REQUIRED TO KEEP A RECORD OF THE LOCATIONS OF THE BURIED STRUCTURES ACCORDING TO THE STATION AND DISTANCE LEFT OR RIGHT OF THE CENTERLINE OF PAVEMENT. UPON COMPLETION OF THE WORK, THE CONTRACTOR WILL DELIVER THE RECORD TO THE ENGINEER.

BASIS OF PAYMENT

1. REMOVING FRAMES AND LIDS ON DRAINAGE AND UTILITY STRUCTURES IN THE PAVEMENT PRIOR TO MILLING, AND ADJUSTING TO FINAL GRADE PRIOR TO PLACING THE SURFACE COURSE, WILL BE PAID FOR AT THE CONTRACT UNIT PRICE EACH FOR "FRAMES AND LIDS TO BE ADJUSTED (SPECIAL)."
2. THIS WORK WILL NOT BE PAID FOR WHEN DRAINAGE AND UTILITY STRUCTURES ARE SPECIFIED FOR PAYMENT AS STRUCTURE RECONSTRUCTION.
3. NEW FRAMES AND LIDS, WHEN SPECIFIED, WILL BE PAID FOR SEPARATELY.
4. WHEN STRUCTURES ARE TO BE ADJUSTED OR RECONSTRUCTED, THE LOWERING AND RAISING OF THE FRAMES AND LIDS WILL NOT BE PAID FOR SEPARATELY BUT WILL BE INCLUDED IN THE COST OF THE CORRESPONDING PAY ITEM.

ALL DIMENSIONS ARE IN INCHES (MILLIMETERS) UNLESS OTHERWISE SHOWN

MODEL: Default
FILE NAME: p:\project-paw-beach\paw.com\p\INDOT\Documents\INDOT\Office\Drawings\11\project\1128622\CADD\data\Design\Bd6St.dgn

USER NAME = Alin,Parayno	DESIGNED - R. SHAH	REVISED - R. BORO 01-01-07
	DRAWN -	REVISED - R. BORO 03-09-11
PLOT SCALE = 100,0000 ' / in.	CHECKED -	REVISED - R. BORO 12-06-11
PLOT DATE = 5/12/2023	DATE - 10-25-94	REVISED - K. SMITH 11-18-22

**STATE OF ILLINOIS
DEPARTMENT OF TRANSPORTATION**

**DETAILS FOR
FRAMES AND LIDS ADJUSTMENT WITH MILLING**

SCALE: NONE SHEET 1 OF 1 SHEETS STA. TO STA.

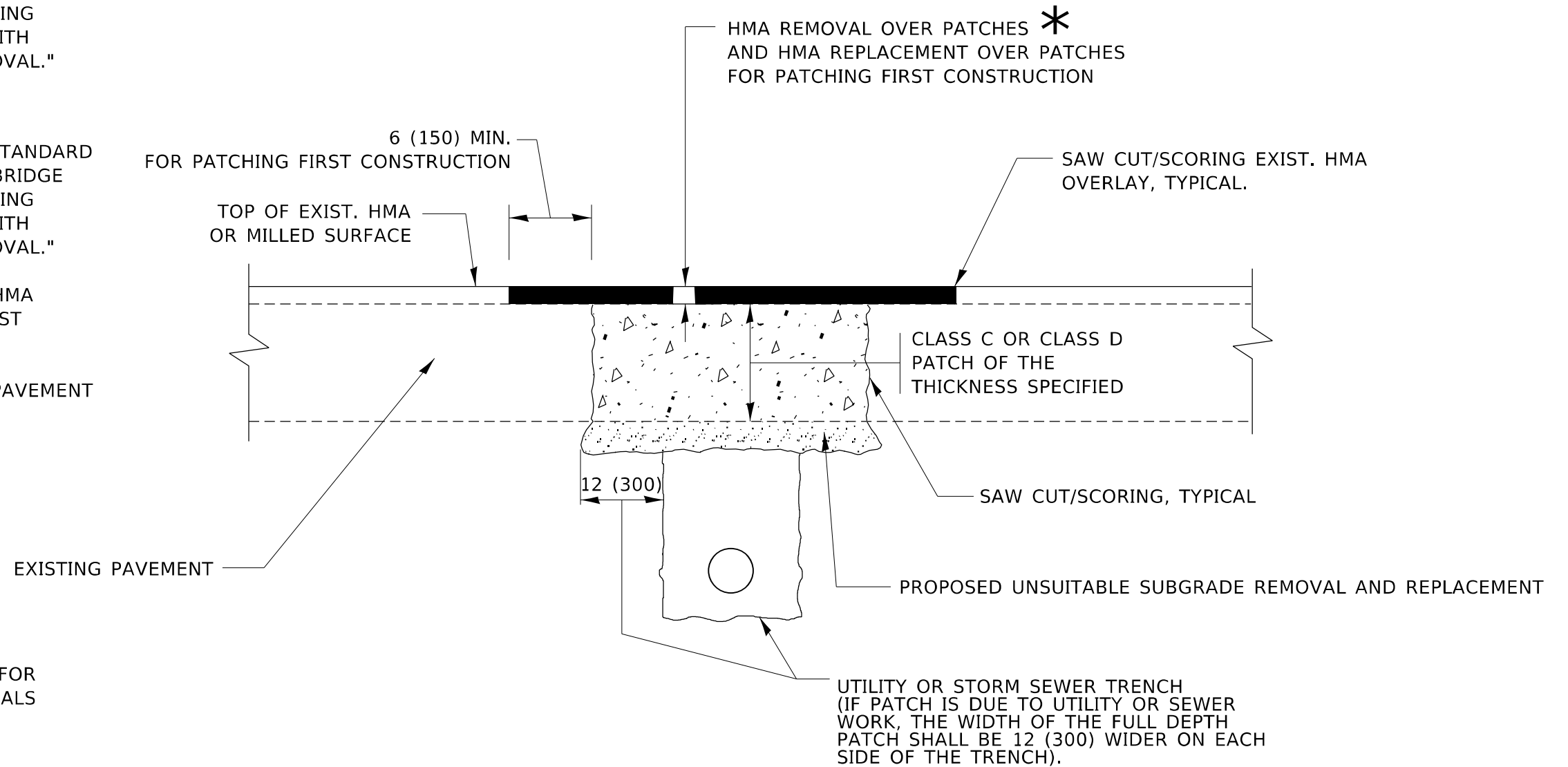
F.A.U. RTE.	SECTION	COUNTY	TOTAL SHEETS	SHEET NO.
383	FAU 0383 22 RS	WILL	33	22
BD600-03 (BD-08)			CONTRACT NO. 62T35	
ILLINOIS		FED. AID PROJECT		

METHOD OF MEASUREMENT

REFER TO SECTION 442 OF THE STANDARD SPECIFICATIONS FOR ROAD AND BRIDGE CONSTRUCTION AND THE RECURRING SPECIAL PROVISION "PATCHING WITH HOT-MIX ASPHALT OVERLAY REMOVAL."

BASIS OF PAYMENT

1. REFER TO SECTION 442 OF THE STANDARD SPECIFICATIONS FOR ROAD AND BRIDGE CONSTRUCTION AND THE RECURRING SPECIAL PROVISION "PATCHING WITH HOT-MIX ASPHALT OVERLAY REMOVAL."
2. SAW CUT/SCORING OF EXISTING HMA OVERLAY IS INCLUDED IN THE COST OF PAVEMENT PATCHING.
3. SAW CUT/SCORING OF EXISTING PAVEMENT IS INCLUDED IN THE COST OF PAVEMENT PATCHING.



* SEE TYPICAL SECTIONS FOR THICKNESS AND MATERIALS

SEQUENCE OF CONSTRUCTION (PATCHING FIRST)

1. REMOVE THE EXISTING HMA MATERIAL OVER THE AREA TO BE PATCHED.
2. REMOVE AND REPLACE WITH CLASS C OR D PATCH.
3. REPLACE HMA MATERIAL OVER THE AREA TO BE PATCHED.

SEQUENCE OF CONSTRUCTION (MILLING FIRST)

1. MILL HMA FIRST IF THERE IS AT LEAST 4½ INCHES OR MORE OF HMA MATERIAL ON TOP OF THE EXISTING PAVEMENT OR IF THE PAVEMENT IS FULL DEPTH HMA. A MINIMUM OF 2 INCHES OF HMA MATERIAL SHALL BE IN PLACE AFTER MILLING.
2. REMOVE AND REPLACE WITH FULL DEPTH CLASS D PATCHES TO TOP OF MILLED SURFACE.

ALL DIMENSIONS ARE IN INCHES (MILLIMETERS) UNLESS OTHERWISE SHOWN.

MODEL: Default
FILE NAME: p:\project\paw\benefit\com\p\w\DOT\Documents\DOT Office\District: 11\project\112862\112862\112862\112862\112862\112862.dgn

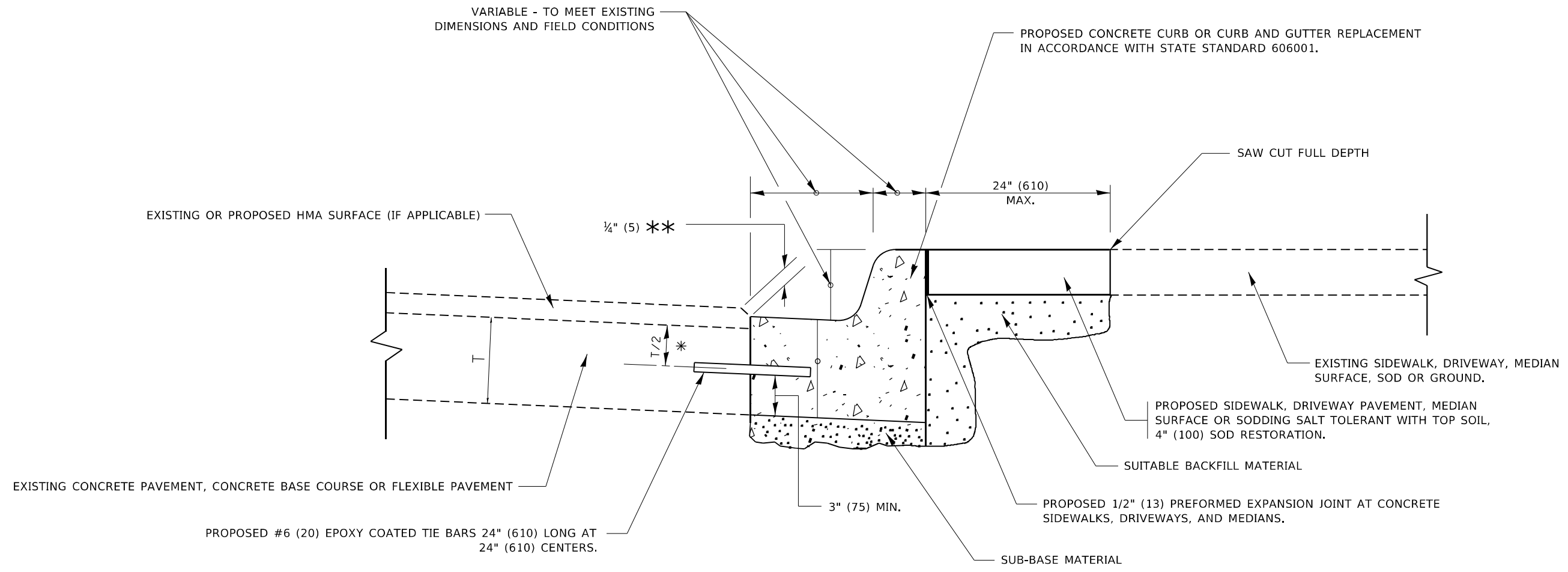
USER NAME = Alin,Parayno	DESIGNED - R. SHAH	REVISED - R. BORO 01-01-07
	DRAWN -	REVISED - R. BORO 09-04-07
PLOT SCALE = 100,0000 ' / in.	CHECKED -	REVISED - K. ENG 10-27-08
PLOT DATE = 5/12/2023	DATE - 10-25-94	REVISED - K. SMITH 11-18-22

**STATE OF ILLINOIS
DEPARTMENT OF TRANSPORTATION**

**PAVEMENT PATCHING FOR
HMA SURFACED PAVEMENT**

SCALE: NONE SHEET 1 OF 1 SHEETS STA. TO STA.

F.A.U. RTE.	SECTION	COUNTY	TOTAL SHEETS	SHEET NO.
383	FAU 0383 22 RS	WILL	33	23
BD400-04 (BD-22)			CONTRACT NO. 62T35	
ILLINOIS FED. AID PROJECT				



- * 3" (75) MINIMUM FROM TOP AND BOTTOM OF THE CONCRETE PAVEMENT OR BASE COURSE.
- ** IF THE FINAL SURFACE OF THE PAVEMENT IS CONCRETE, THE GUTTER IS TO BE FLUSH WITH THE PAVEMENT.

CURB OR CURB AND GUTTER REMOVAL AND REPLACEMENT

ALL DIMENSIONS ARE IN INCHES (MILLIMETERS) UNLESS OTHERWISE SHOWN.

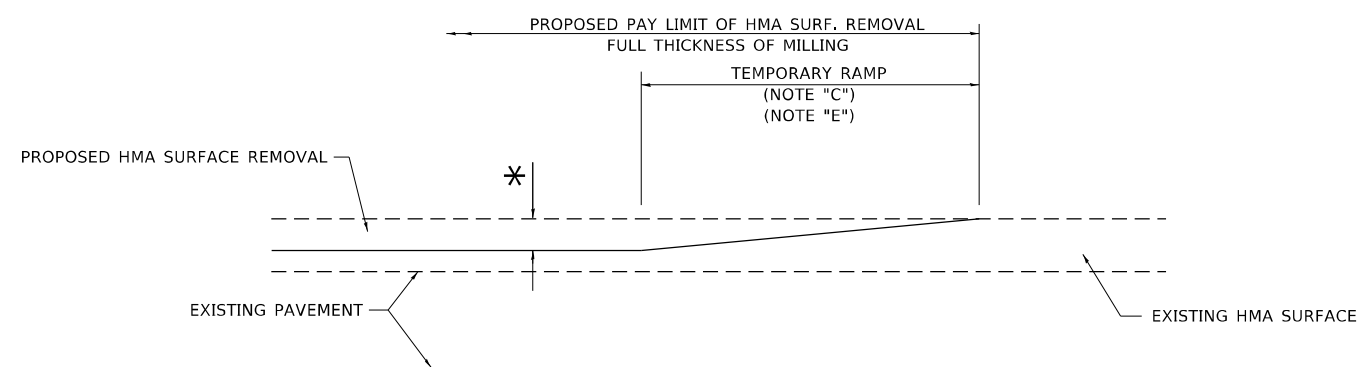
MODEL: Default
FILE: \\nafe-pw\public-pw-beadefy.com\PIV\DOT\Documents\DOT Office\Dir\rdet - I\Project\12862\CAD\data\Design\BdRst.dgn

USER NAME = Alan.Parayno	DESIGNED - A. HOUSEH	REVISED - A. ABBAS 03-21-97
	DRAWN -	REVISED - M. GOMEZ 01-22-01
PLOT SCALE = 100,0000 ' / in.	CHECKED -	REVISED - R. BORO 12-15-09
PLOT DATE = 5/12/2023	DATE - 03-11-94	REVISED - K. SMITH 07-11-19

**STATE OF ILLINOIS
DEPARTMENT OF TRANSPORTATION**

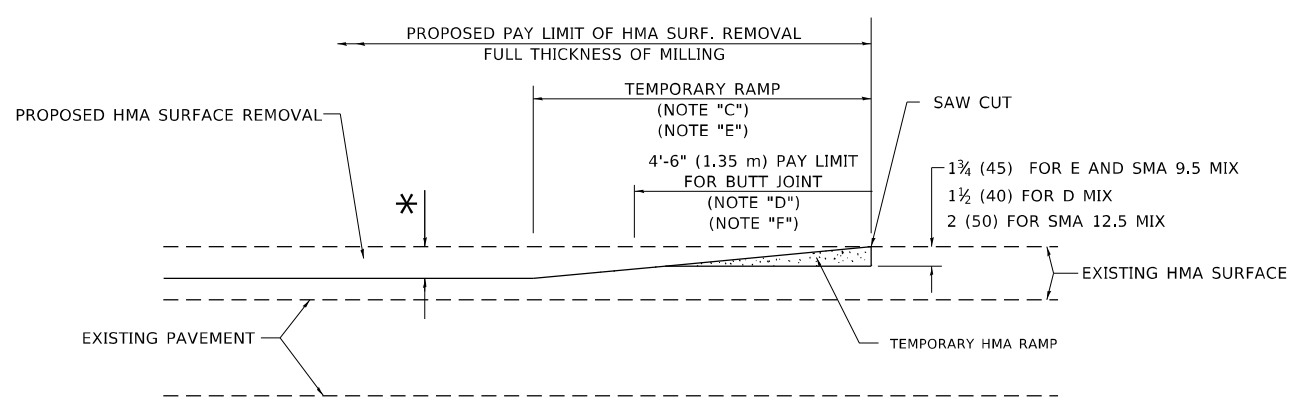
CURB OR CURB AND GUTTER REMOVAL AND REPLACEMENT			
SCALE: NONE	SHEET 1	OF 1 SHEETS	STA. TO STA.

F.A.U. RTE.	SECTION	COUNTY	TOTAL SHEETS	SHEET NO.
383	FAU 0383 22 RS	WILL	33	24
BD600-06 (BD-24)		CONTRACT NO. 62T35		
ILLINOIS FED. AID PROJECT				



MILLED TEMPORARY RAMP
(FOR BUTT JOINT AND HMA TAPER SEE DETAIL BELOW)

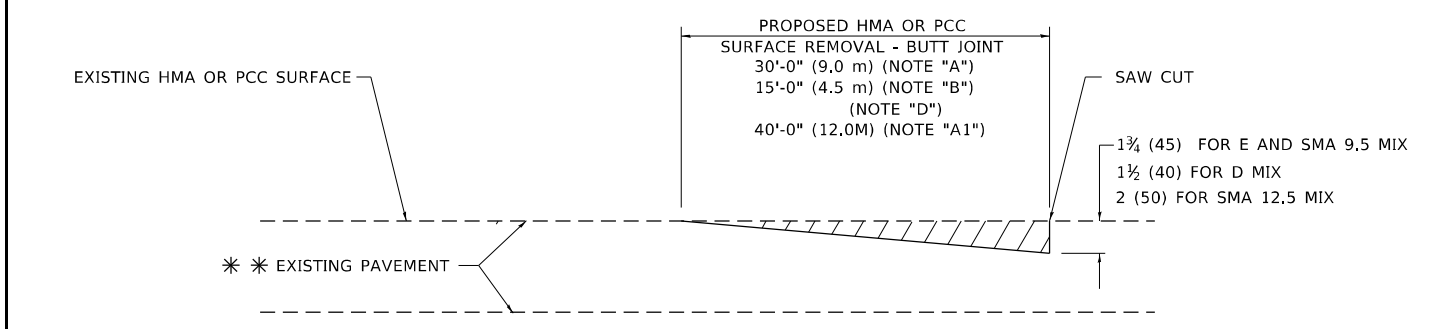
OPTION 1



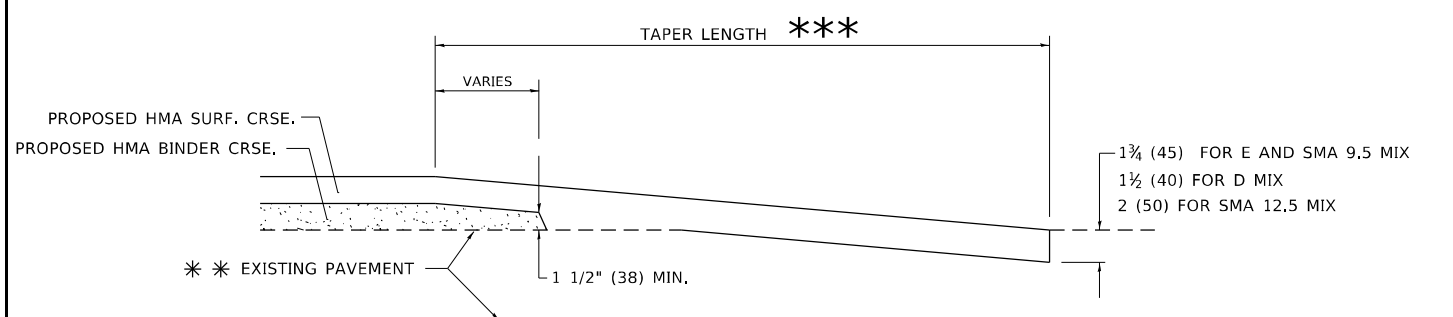
HMA CONSTRUCTED TEMPORARY RAMP
(FOR BUTT JOINT AND HMA TAPER SEE DETAIL BELOW)

OPTION 2

TYPICAL TEMPORARY RAMP



BUTT JOINT DETAIL



HMA TAPER DETAIL

TYPICAL BUTT JOINT AND HMA TAPER FOR RESURFACING ONLY

*** PC CONCRETE, HMA OR HMA RESURFACED PAVEMENT.

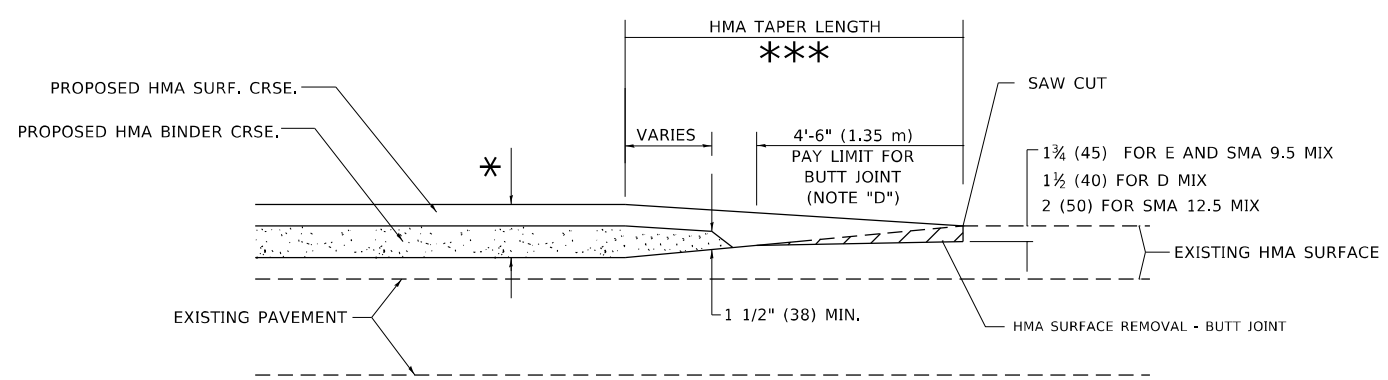
GENERAL NOTES

- A. MAINLINE ARTERIAL ROADWAYS AND MAJOR SIDE ROADS.
- A1. INTERSTATES
- B. MINOR SIDE ROADS.
- C. THE TEMP. RAMP SHALL BE CONSTRUCTED IMMEDIATELY UPON REMOVAL OF THE EXISTING HMA SURFACE.
- D. THE BUTT JOINT SHALL BE CONSTRUCTED IMMEDIATELY PRIOR TO PLACING THE PROPOSED HMA COURSES.
- E. TAPER THE TEMP. RAMP AT A RATE OF 3' - 4" (1.02m) PER 1 INCH (25 mm) OF MILLING THICKNESS.
* SEE TYPICAL SECTIONS FOR MILLING THICKNESS.
- F. SEE ARTICLE 406.08 AND 406.14 OF THE STANDARD SPECIFICATIONS FOR "HMA AND/OR PCC SURFACE REMOVAL, BUTT JOINT".
*** 20'-0" (6.1 m) PER 1 (25) RESURFACING (NOTE "A")
10'-0" (3.0 m) PER 1 (25) RESURFACING (NOTE "B")

BASIS OF PAYMENT

- 1. THE BUTT JOINT WILL BE PAID FOR AT THE CONTRACT UNIT PRICE PER SQUARE YARD (SQUARE METER) FOR "HOT-MIX ASPHALT SURFACE REMOVAL - BUTT JOINT" OR FOR "PORTLAND CEMENT CONCRETE SURFACE REMOVAL- BUTT JOINT".
- 2. THE TEMPORARY RAMP AND SAW CUT SHALL BE INCLUDED IN THE UNIT COST FOR HMA OR PCC SURFACE REMOVAL-BUTT JOINT.

ALL DIMENSIONS ARE IN INCHES (MILLIMETERS) UNLESS OTHERWISE SHOWN.



BUTT JOINT AND HMA TAPER

TYPICAL BUTT JOINT AND HMA TAPER FOR MILLING AND RESURFACING

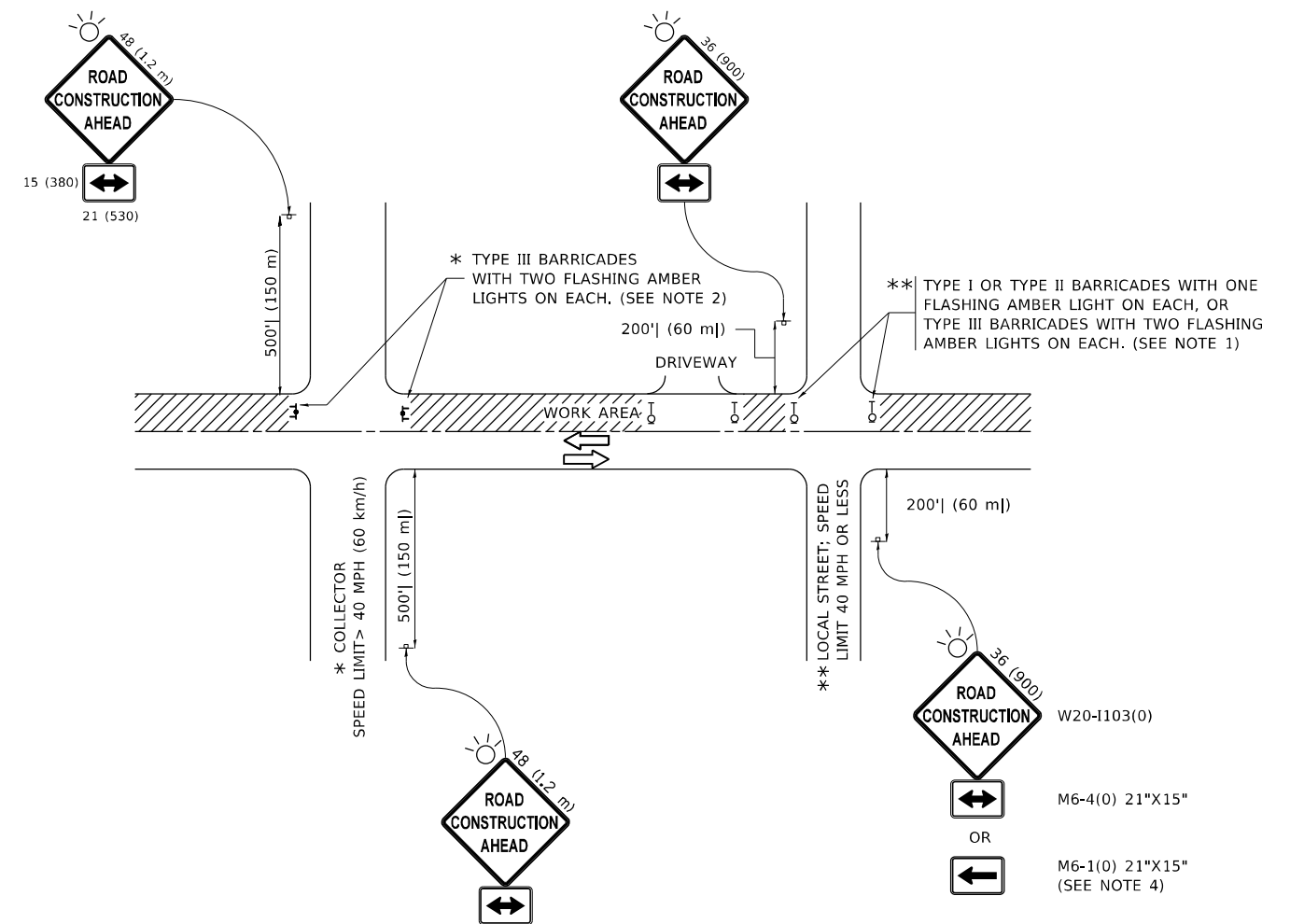
MODEL: Default
FILE: hma12.ctb
PROJECT: \\dot\projects\120622\Cadd\120622\120622.ctb\120622.ctb

USER NAME = Alan.Parayno	DESIGNED - M. DE YONG	REVISED - A. ABBAS 03-21-97
	DRAWN -	REVISED - M. GOMEZ 04-06-01
PLOT SCALE = 100,0000' / in.	CHECKED -	REVISED - R. BORO 01-01-07
PLOT DATE = 5/12/2023	DATE - 06-13-90	REVISED - K. SMITH 11-18-22

STATE OF ILLINOIS
DEPARTMENT OF TRANSPORTATION

BUTT JOINT AND HMA TAPER DETAILS			
SCALE: NONE	SHEET 1	OF 1 SHEETS	STA. TO STA.

F.A.U. RTE.	SECTION	COUNTY	TOTAL SHEETS	SHEET NO.
383	FAU 0383 22 RS	WILL	33	25
BD400-05 BD-32		CONTRACT NO. 62T35		
ILLINOIS FED. AID PROJECT				



NOTES:

1. SIDE ROAD WITH A SPEED LIMIT OF 40 MPH (60 km/h) OR LESS AS SHOWN ON THE DRAWING AND AS DIRECTED BY THE ENGINEER:
 - a) ONE "ROAD CONSTRUCTION AHEAD" SIGN 36 x 36 (900x900) WITH A FLASHER MOUNTED ON IT APPROXIMATELY 200' (60 m) IN ADVANCE OF THE MAIN ROUTE.
 - b) THE CLOSED PORTION OF THE MAIN ROUTE SHALL BE PROTECTED BY BLOCKING WITH TYPE I, TYPE II OR TYPE III BARRICADES, 1/3 OF THE CROSS SECTION OF THE CLOSED PORTION.
2. SIDE ROAD WITH A SPEED LIMIT GREATER THAN 40 MPH (60 km/h) AS SHOWN ON THE DRAWING AND AS DIRECTED BY THE ENGINEER:
 - a) ONE "ROAD CONSTRUCTION AHEAD" SIGN 48 x 48 (1.2 m x 1.2 m) WITH A FLASHER MOUNTED ON IT APPROXIMATELY 500' (150 m) IN ADVANCE OF THE MAIN ROUTE.
 - b) BLOCKING WITH TYPE III BARRICADES, 1/2 OF THE CROSS SECTION OF THE CLOSED PORTION.
3. CONES MAY BE SUBSTITUTED FOR BARRICADES OR DRUMS AT HALF THE SPACING DURING DAY OPERATIONS. CONES SHALL BE A MINIMUM OF 28 (710) IN HEIGHT.
4. SIGNING AND THE WORK ZONE, A SINGLE HEADED ARROW (M6-1) SHALL BE USED IN LIEU OF THE DOUBLE HEADED ARROW (M6-4).
5. WHEN WORK IS BEING PERFORMED ON A SIDE ROAD OR DRIVEWAY, FOLLOW THE APPLICABLE STANDARD(S). THE DIRECTIONAL ARROW (M6-1 OR M6-4) SHALL BE COVERED OR REMOVED WHEN NO LONGER CONSISTENT WITH THE TRAFFIC CONTROL SET-UP.
6. ADVANCE WARNING SIGNS ARE TO BE OMITTED ON DRIVEWAYS UNLESS OTHERWISE SPECIFIED IN THE PLANS OR BY THE ENGINEER.
7. THE TRAFFIC CONTROL AND PROTECTION FOR SIDE ROADS, INTERSECTIONS, AND DRIVEWAYS SHALL BE INCLUDED IN THE COST OF SPECIFIED TRAFFIC CONTROL STANDARDS OR ITEMS.

All dimensions are in inches (millimeters) unless otherwise shown.

MODEL: Default
 FILE NAME: p:\ultra-caw-beach\paw.com\PIV\DOT\Documents\DOT Office\Dir\rdet_1\Project\ID128622\CADD\DATA\Design\BATS\Std.dgn

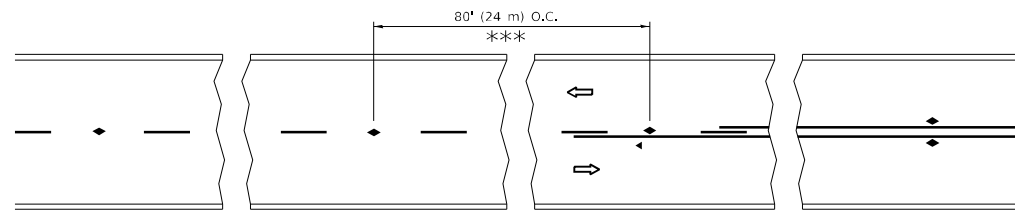
USER NAME = Alin,Parayno	DESIGNED - L.H.A.	REVISED - A. HOUSEH 10-15-96
PLOT SCALE = 100,0000' / in.	CHECKED -	REVISED - T. RAMMACHER 01-06-00
PLOT DATE = 5/12/2023	DATE - 06-89	REVISED - A. SCHUETZE 07-01-13
		REVISED - A. SCHUETZE 09-15-16

**STATE OF ILLINOIS
DEPARTMENT OF TRANSPORTATION**

**TRAFFIC CONTROL AND PROTECTION FOR
SIDE ROADS, INTERSECTIONS, AND DRIVEWAYS**

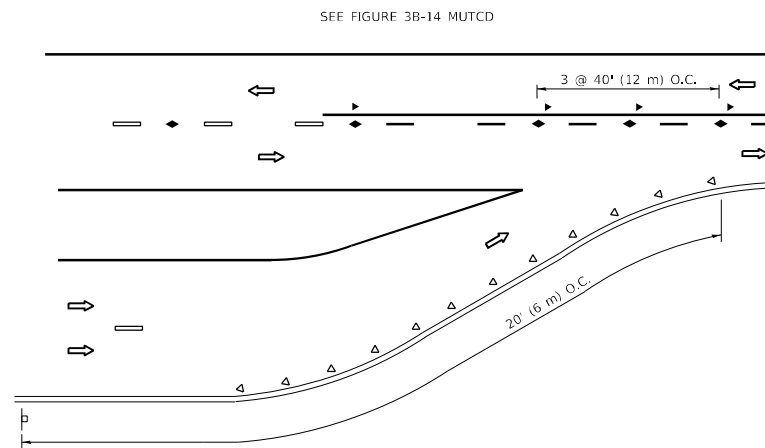
SCALE: NONE SHEET 1 OF 1 SHEETS STA. TO STA.

F.A.U. RTE.	SECTION	COUNTY	TOTAL SHEETS	SHEET NO.
383	FAU 0383 22 RS	WILL	33	26
TC-10		CONTRACT NO. 62T35		
ILLINOIS FED. AID PROJECT				

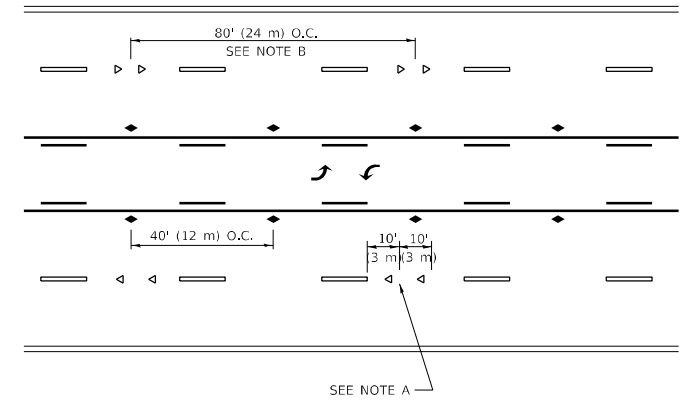


*** REDUCE TO 40' (12 m) O.C. ON CURVES WITH POSTED OR ADVISORY SPEED 45 M.P.H. (70 km/h) OR LESS.

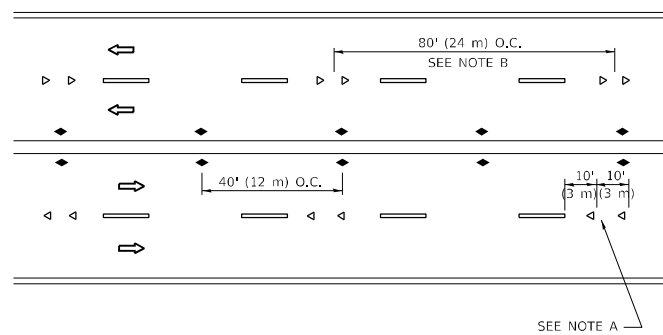
TWO-LANE/TWO-WAY



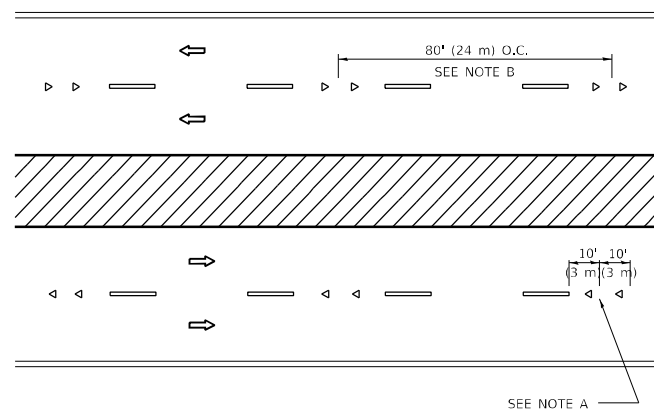
LANE REDUCTION TRANSITION



TWO-WAY LEFT TURN



MULTI-LANE/UNDIVIDED



MULTI-LANE/DIVIDED

GENERAL NOTES

1. MARKERS USED WITH DASHED LINES SHALL BE CENTERED IN THE GAP BETWEEN SEGMENTS.
2. MARKERS USED ADJACENT TO SOLID LINES SHALL BE OFFSET 2 TO 3 (50 TO 75) TOWARD TRAFFIC AS SHOWN.
3. MARKERS THROUGH TANGENTS LESS THAN 500' (150 m) IN LENGTH BETWEEN CURVES SHALL BE INSTALLED AT THE LESSER OF THE TWO CURVE SPACINGS.
4. MARKERS ARE TO BE USED ADJACENT TO BOTH SOLID WHITE LINES IN DUAL LEFT TURN LANES

SYMBOLS

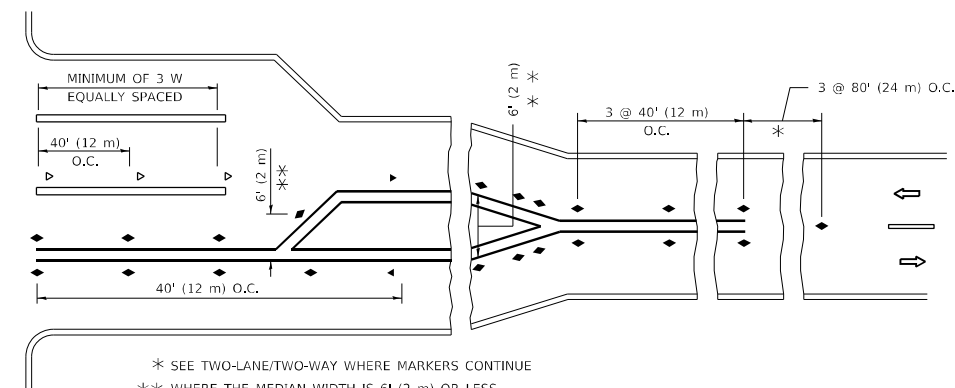
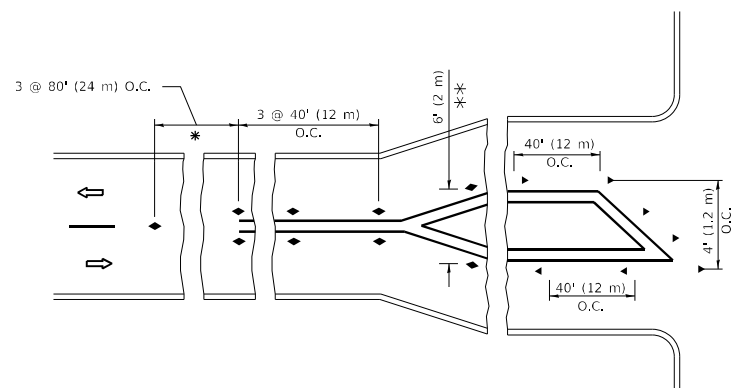
- YELLOW STRIPE
- WHITE STRIPE
- ◀ ONE-WAY AMBER MARKER
- ◀ ONE-WAY CRYSTAL MARKER (W/O)
- ◆ TWO-WAY AMBER MARKER

LANE MARKER NOTES

- A. USE DOUBLE LANE LINE MARKERS SPACED AS SHOWN.
- B. REDUCE TO 40' (12 m) O.C. ON CURVES WHERE ADVISORY SPEEDS ARE 10 M.P.H (20 km/h) LOWER THAN POSTED SPEEDS.

DESIGN NOTES

1. DOUBLE LANE LINE MARKERS SHALL BE USED UNLESS SPECIFIED OTHERWISE.
2. EXCEPT AS SHOWN ON THE LANE REDUCTION TRANSITION AND FREEWAY EXIT RAMP DETAIL, MARKERS ARE NOT TO BE SPECIFIED ON RIGHT EDGE LINES.
3. THE EXACT MARKER LIMITS, SPACING, AND COLOR SHALL BE INCLUDED IN THE PLANS WHEN STANDARD SPECIFICATIONS ARE NOT BEING USED.
4. MARKERS SHOULD NOT BE USED ALONGSIDE CURBS EXCEPT FOR EXTREMELY SHORT SECTIONS OF CURBS WHERE NOT MORE THAN TWO MARKERS WOULD BE INVOLVED.



TURN LANES

* SEE TWO-LANE/TWO-WAY WHERE MARKERS CONTINUE
 ** WHERE THE MEDIAN WIDTH IS 6' (2 m) OR LESS USE TWO-WAY MARKERS.

All dimensions are in inches (millimeters) unless otherwise shown.

MODEL Path: \\s:\projects\2023\5122023\5122023.dwg
 FILE NAME: 5122023.dwg
 PROJECT: 5122023
 PROJECT: 5122023
 PROJECT: 5122023

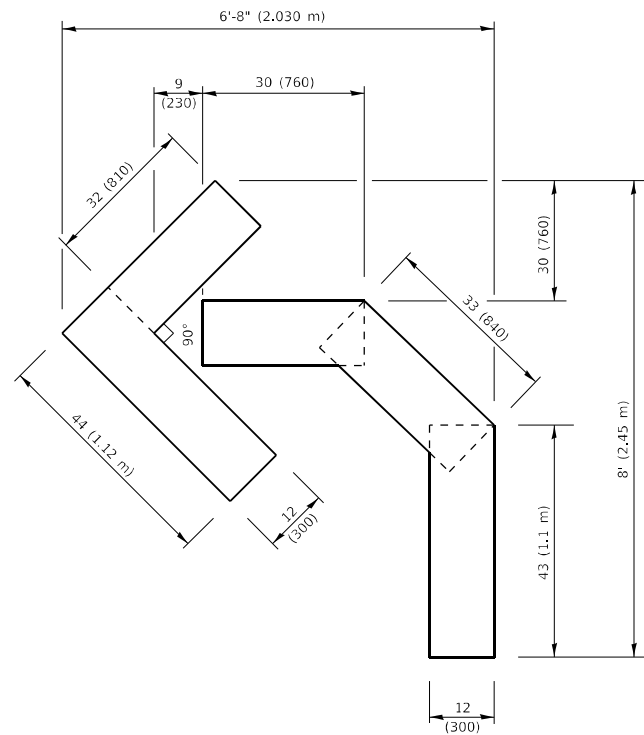
USER NAME = Alan,Parayno	DESIGNED -	REVISED - T. RAMMACHER 03-12-99
	DRAWN -	REVISED - T. RAMMACHER 01-06-00
PLOT SCALE = 100,0000' / in.	CHECKED -	REVISED - C. JUCIUS 09-09-09
PLOT DATE = 5/12/2023	DATE -	REVISED - C. JUCIUS 07-01-13

**STATE OF ILLINOIS
 DEPARTMENT OF TRANSPORTATION**

**TYPICAL APPLICATIONS
 RAISED REFLECTIVE PAVEMENT MARKERS (SNOW-PLOW RESISTANT)**

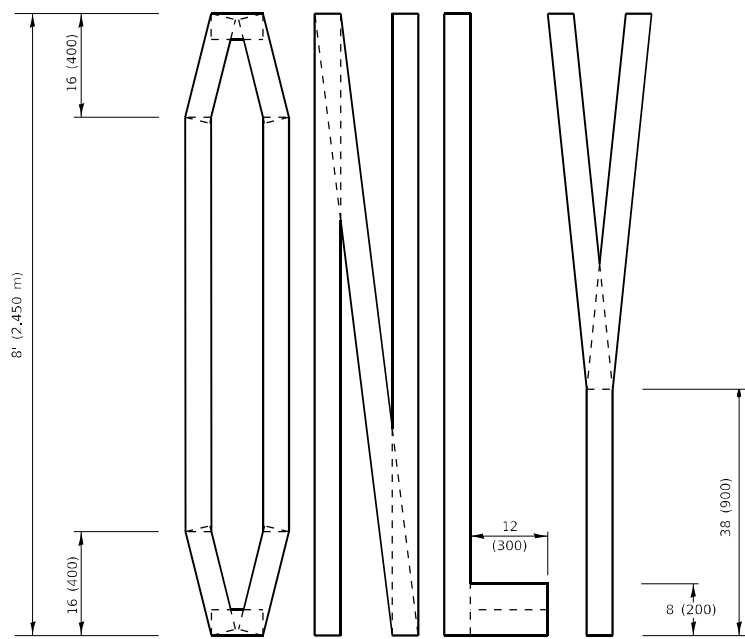
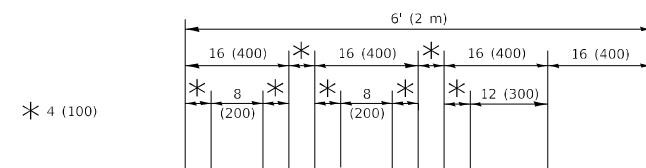
SCALE: NONE SHEET 1 OF 1 SHEETS STA. TO STA.

F.A.U. RTE.	SECTION	COUNTY	TOTAL SHEETS	SHEET NO.
383	FAU 0383 22 RS	WILL	33	27
TC-11			CONTRACT NO. 62T35	
ILLINOIS FED. AID PROJECT				



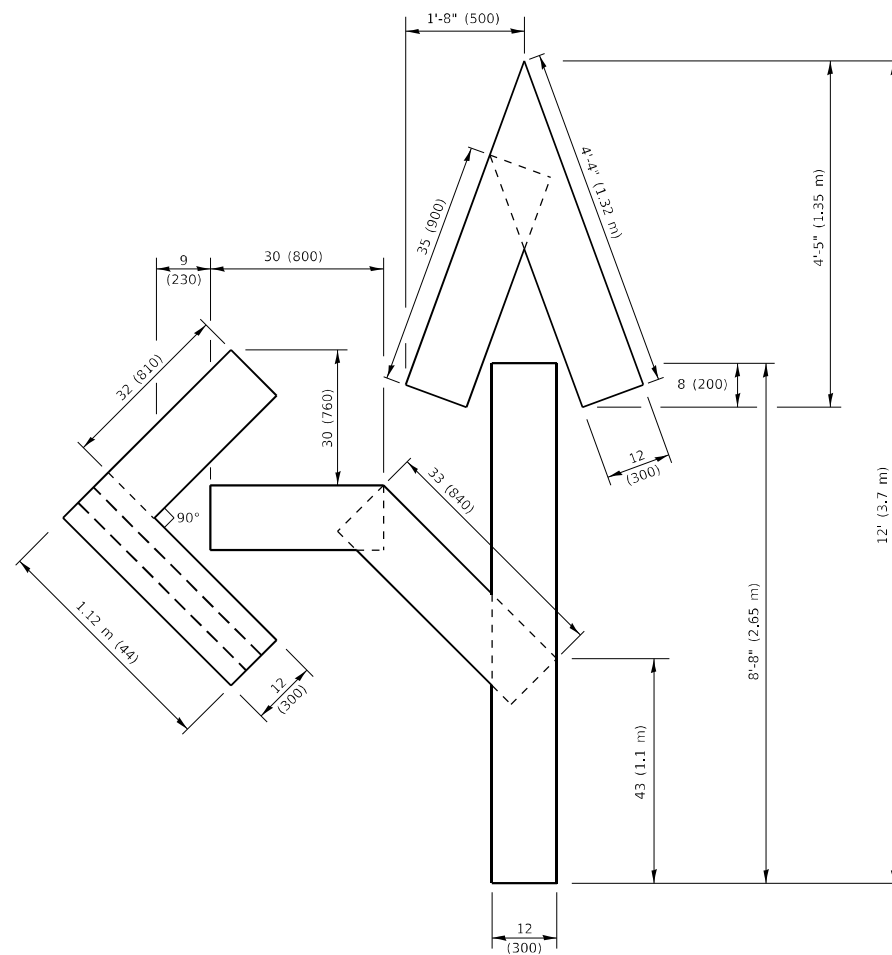
QUANTITY

4 (100) LINE = 45.5 ft. (13.9 m)
15.2 sq. ft. (1.41 sq. m)



QUANTITY

4 (100) LINE = 64.1 ft. (19.5 m)
21.4 sq. ft. (1.99 sq. m)

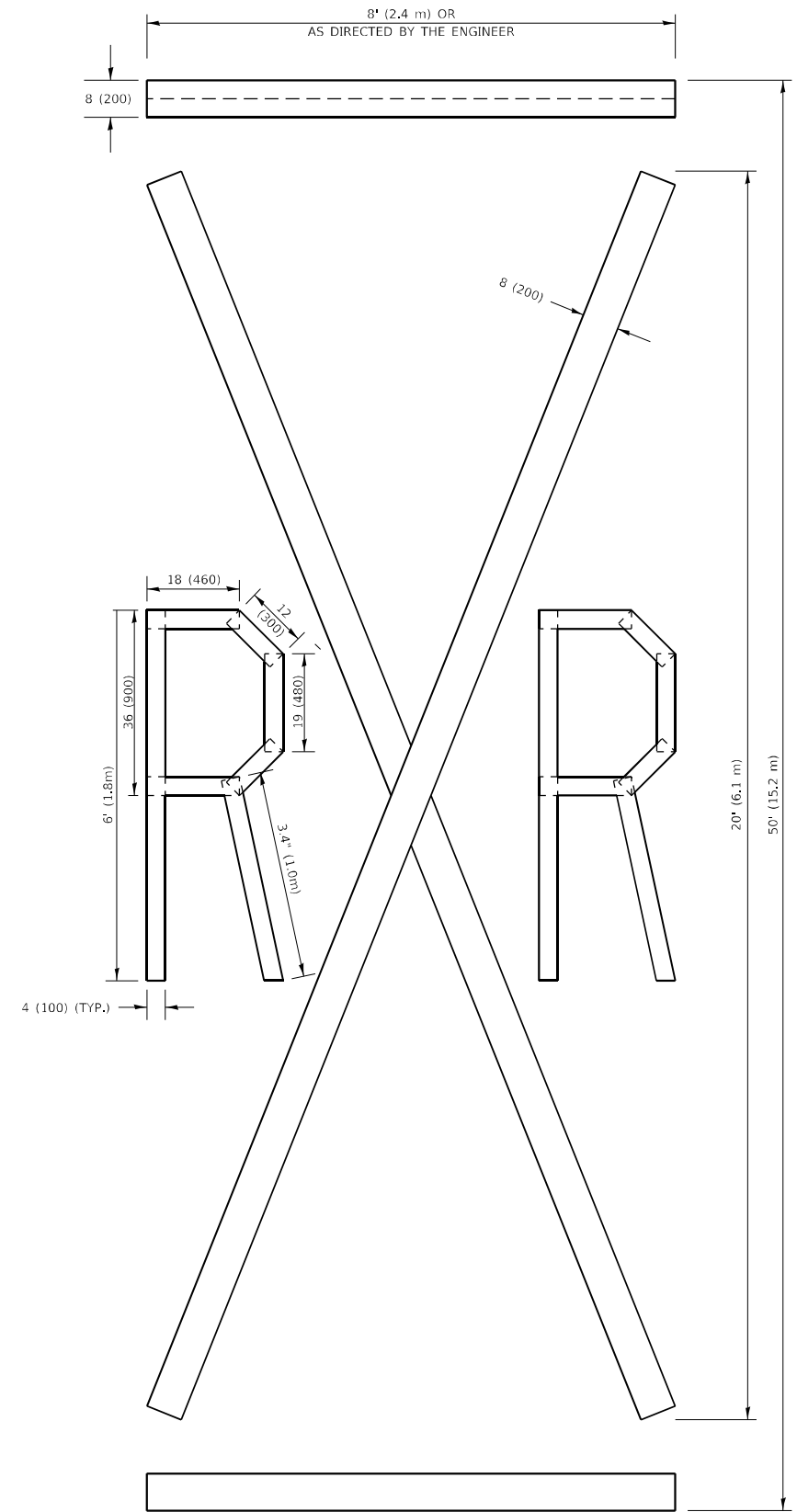


QUANTITY

4 (100) LINE = 82.5 ft. (25.1 m)
27.5 sq. ft. (2.53 sq. m)

NOTE:

ALL QUANTITIES OF PLACEMENT ARE REPRESENTED IN LINEAR FEET OF 4" LINES TO MATCH THE 4" TEMPORARY TAPE PAY ITEM AND REPRESENTS THE TOTAL QUANTITY OF 4" TAPE REQUIRED.



QUANTITY

4 (100) LINE = 225.9 ft. (68.9 m)
75.3 sq. ft. (6.99 sq. m)

All dimensions are in inches (millimeters) unless otherwise shown.

MODEL: Default
FILE NAME: p:\ultra-caw-bead-fay.com\PIV\DOT\Documents\DOT Office\District: 1\Project\10128622\CADD\DATA\Design\BdFStEd.dgn

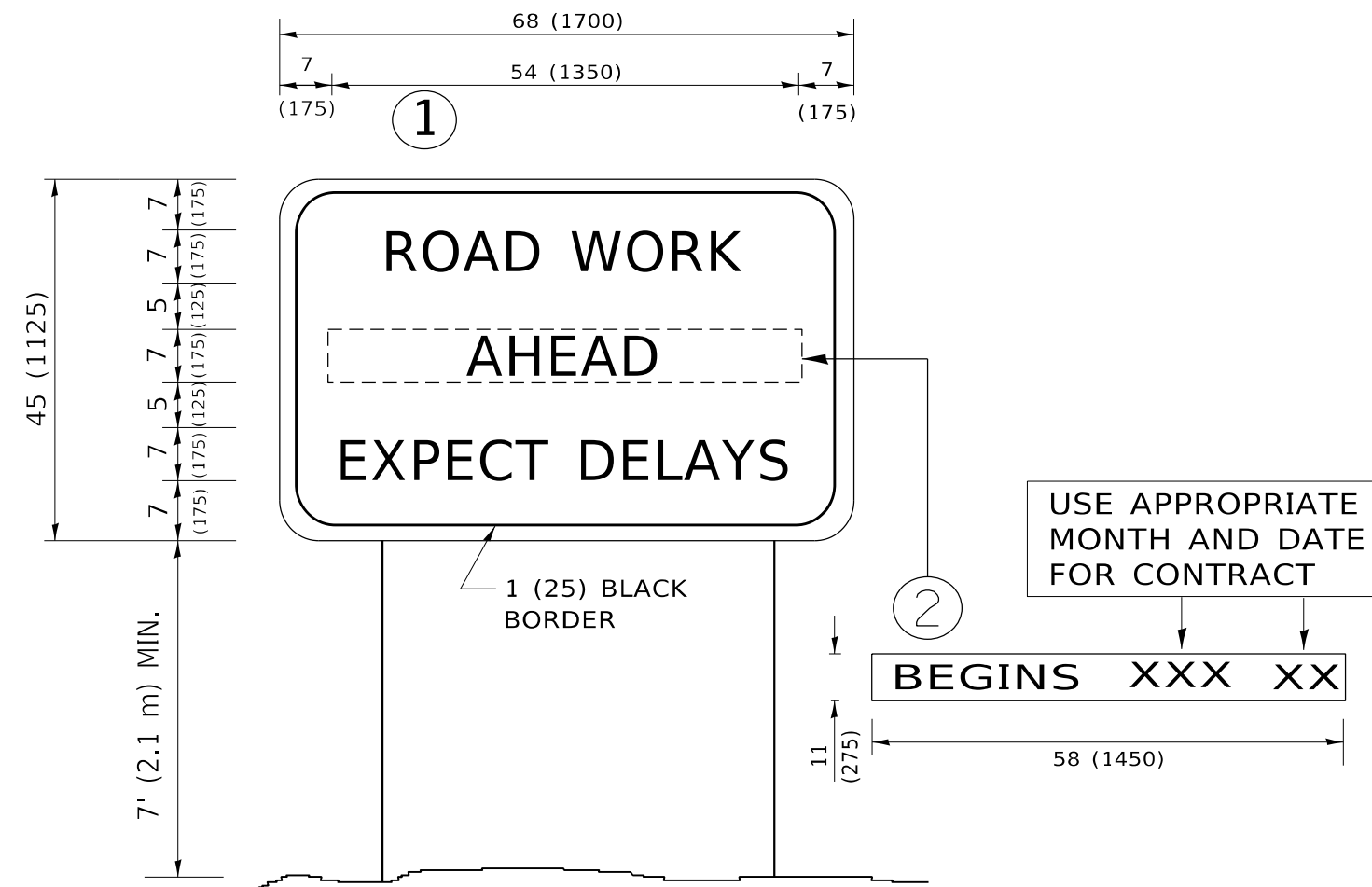
USER NAME = Alin,Parayno	DESIGNED -	REVISED - T. RAMMACHER 03-02-98
	DRAWN -	REVISED - E. GOMEZ 08-28-00
PLOT SCALE = 100,0000 ' / in.	CHECKED -	REVISED - E. GOMEZ 08-28-00
PLOT DATE = 5/12/2023	DATE - 09-18-94	REVISED - A. SCHUETZE 09-15-16

**STATE OF ILLINOIS
DEPARTMENT OF TRANSPORTATION**

SHORT TERM PAVEMENT MARKING LETTERS AND SYMBOLS

SCALE: NONE SHEET 1 OF 1 SHEETS STA. TO STA.

F.A.U. RTE.	SECTION	COUNTY	TOTAL SHEETS	SHEET NO.
383	FAU 0383 22 RS	WILL	33	29
TC-16		CONTRACT NO. 62T35		
ILLINOIS FED. AID PROJECT				



NOTES:

1. USE BLACK LETTERING ON ORANGE BACKGROUND.
2. ERECT SIGNS IN ADVANCE OF THE LOCATION FOR THE "ROAD CONSTRUCTION AHEAD" SIGN AT LOCATIONS AS DIRECTED BY THE ENGINEER.
3. ERECT SIGN ① WITH INSTALLED PANEL ② ONE WEEK PRIOR TO THE START OF CONSTRUCTION.
4. REMOVE PANEL ② SOON AFTER THE START OF CONSTRUCTION.
5. SEE SPECIAL PROVISION FOR "TEMPORARY INFORMATION SIGNING" FOR ADDITIONAL INFORMATION.
6. ONE SIGN ASSEMBLY EQUALS 25.70 SQ. FT. (2.3 SQ. M.)
7. SHALL BE PAID FOR AS TEMPORARY INFORMATION SIGNING.

ALL DIMENSIONS ARE IN INCHES (MILLIMETERS) UNLESS OTHERWISE SHOWN.

MODEL: Default
 FILE: \\mifs-pw-bentley.com\PW\DOT\Documents\DOT Office\Dir\drt_1\Project\128622\CADD\data\Design\BtES.dgn

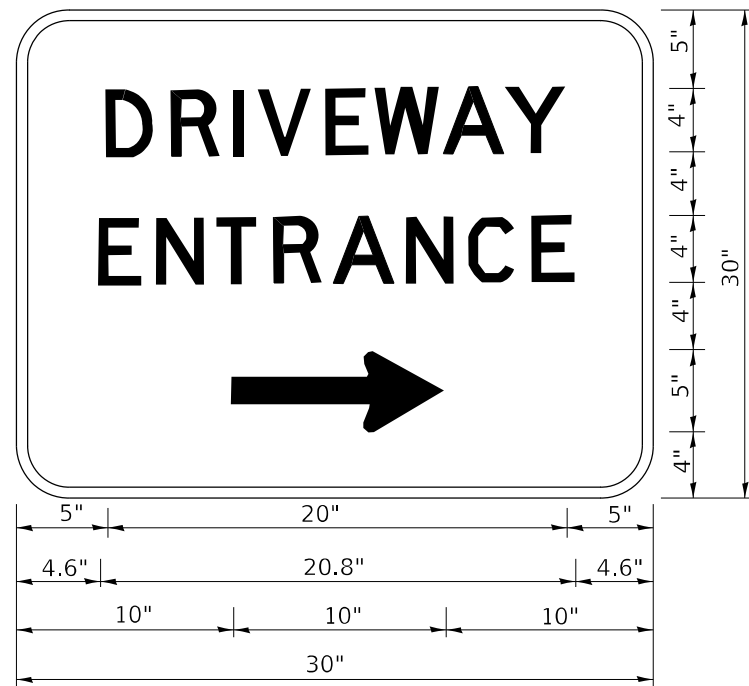
USER NAME = Alan.Parayno	DESIGNED -	REVISED - R. MIRS 09-15-97
	DRAWN -	REVISED - R. MIRS 12-11-97
PLOT SCALE = 100,0000 ' / in.	CHECKED -	REVISED - T. RAMMACHER 02-02-99
PLOT DATE = 5/12/2023	DATE -	REVISED - C. JUCIUS 01-31-07

**STATE OF ILLINOIS
DEPARTMENT OF TRANSPORTATION**

**ARTERIAL ROAD
INFORMATION SIGN**

SCALE: NONE SHEET 1 OF 1 SHEETS STA. TO STA.

F.A.U. RTE.	SECTION	COUNTY	TOTAL SHEETS	SHEET NO.
383	FAU 0383 22 RS	WILL	33	30
TC-22			CONTRACT NO. 62T35	
ILLINOIS FED. AID PROJECT				



3.0" RADIUS, 0.5" BORDER, WHITE ON GREEN; REFLECTORIZED
 "DRIVEWAY" D; "ENTRANCE" D; STANDARD ARROW CUSTOM 12.0" x 5.0"

NOTES:

1. HALF OF THE SIGNS WILL REQUIRE A LEFT HAND FACING ARROW.
2. TWO SIGNS SHALL BE USED AT EACH COMMERCIAL ENTRANCE PLACED BACK-TO-BACK: ONE WITH A RIGHT HAND ARROW (SHOWN) SHALL BE PLACED ON THE NEAR RIGHT SIDE THE DRIVEWAY AND ONE WITH A LEFT HAND ARROW SHALL BE PLACED ON THE FAR LEFT SIDE OF THE DRIVEWAY.
3. SIGNS TO BE PAID FOR AS ITEM "TEMPORARY INFORMATION SIGNING".

MODEL: Default
 FILE NAME: p:\ultra-caw-beadley.com\PI\DOT\Documents\DOT Office\Dir\drt. 1\Project\1012862\CAD\data\Design\DrivStg.dgn

USER NAME = Alin,Parayno	DESIGNED -	REVISED - C. JUCIUS 02-15-07
	DRAWN -	REVISED -
PLOT SCALE = 100,0000' / in.	CHECKED -	REVISED -
PLOT DATE = 5/12/2023	DATE -	REVISED -

**STATE OF ILLINOIS
 DEPARTMENT OF TRANSPORTATION**

DRIVEWAY ENTRANCE SIGNING

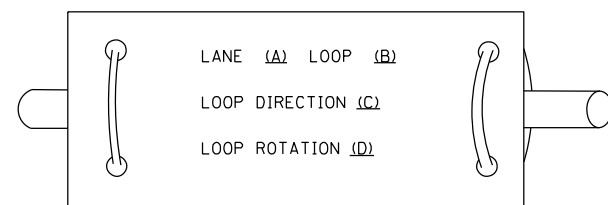
SCALE: NONE SHEET 1 OF 1 SHEETS STA. TO STA.

F.A.U. RTE.	SECTION	COUNTY	TOTAL SHEETS	SHEET NO.
383	FAU 0383 22 RS	WILL	33	31
TC-26			CONTRACT NO. 62T35	
ILLINOIS FED. AID PROJECT				

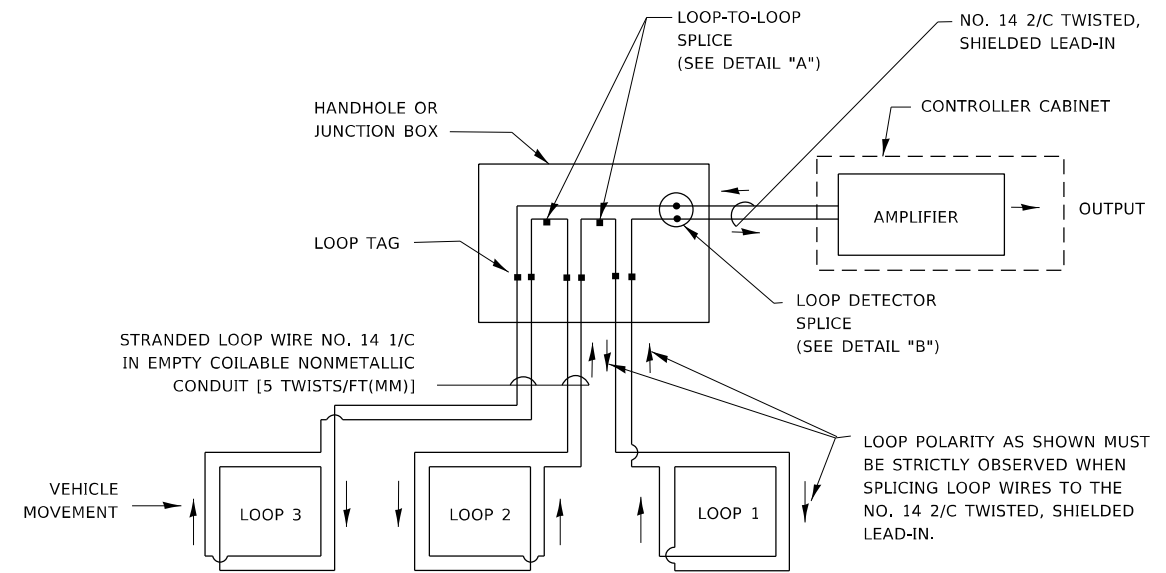
LOOP DETECTOR NOTES

1. EACH PAIR OF LOOP WIRES SHALL BE PLACED IN A SEPARATE EMPTY COILABLE NONMETALLIC CONDUIT FROM THE EDGE OF PAVEMENT TO THE HANDHOLE. SPACING BETWEEN THE HOLES DRILLED IN THE PAVEMENT SHALL NOT BE LESS THAN 6" (150 mm). EMPTY COILABLE NONMETALLIC CONDUIT SHALL BE INCLUDED IN THE COST OF THE LOOP WIRE.
2. THE NUMBER OF LOOP TURNS SHALL BE AS RECOMMENDED BY THE AMPLIFIER MANUFACTURER. ALL ADJACENT SIDES OF THE LOOPS SHALL BE INSTALLED IN SUCH A WAY THAT THE CURRENT FLOW IS IN THE SAME DIRECTION TO REINFORCE ITS MAGNETIC FIELDS FOR SMALL VEHICLE DETECTION.
3. EACH LOOP LEAD-IN SHALL BE IDENTIFIED AND PERMANENTLY TAGGED IN THE HANDHOLE. EACH LEAD-IN CABLE TAG SHALL INDICATE THE LOCATION OF THE LOOP, LOOP ROTATION (CLOCKWISE/COUNTERCLOCKWISE), LOOP LEAD-IN DIRECTION (IN OR OUT), LOOP CABLE NUMBER AND LOCATION IN CABINET, AND NUMBER OF TURNS IN THE DETECTOR LOOPS IN WATER PROOF INK AS INDICATED ON THE DISTRICT 1 STANDARD TRAFFIC SIGNAL DESIGN DETAIL. THE CONTRACTOR SHALL MARK LOOP LOCATIONS ON RECORD DRAWINGS AND PRESENT TO THE ENGINEER AFTER FINAL INSPECTION. LOOPS SHALL BE MARKED BY LANE AND LOOP NUMBER. SEE DETAIL BELOW.
4. ALL LOOP CABLE SHALL BE FASTENED WITH PLASTIC TIE WRAP TO THE HANDHOLE HOOKS.
5. IN ASPHALT PAVEMENT, LOOPS SHOULD BE PLACED IN THE BINDER AND DIVEHOLES MARKED AT THE CURB WITH A SAW-CUT. THE SAW-CUT SHALL BE CUT IN ACCORDANCE WITH LOCAL AND E.P.A. DUST CONTROL REQUIREMENTS. DETECTOR LOOP(S) SHALL NOT BE INSTALLED IN WET CONDITIONS AND THE SAW-CUTS MUST BE FREE OF DEBRIS AND RESIDUE SUCH AS DUST AND WATER WHICH IS TO BE ACHIEVED BY THE USE OF COMPRESSED AIR, WIRE BRUSHING AND HEAT DRYING ACCORDING TO SEALANT MANUFACTURER REQUIREMENTS. THE DETECTOR WIRE SHALL BE HELD IN PLACE BY THE USE OF FORM WEDGES. WEDGES SHALL BE SPACED NO MORE THAN 18" (450 mm) APART.
6. LOOP SPLICES SHALL BE SOLDERED USING A SOLDERING IRON. BLOW TORCHES OR OTHER DEVICES WHICH OXIDIZE COPPER CABLE SHALL NOT BE ALLOWED FOR SOLDERING OPERATIONS. SEE DETAIL BELOW RIGHT.
7. PREFORMED DETECTOR LOOPS SHALL BE USED, AS SHOWN ON THE PLANS, WHERE NEW CONCRETE PAVEMENT IS PROPOSED. THE INSTALLATION OF PREFORMED LOOPS SHALL BE IN ACCORDANCE WITH THE DISTRICT 1 SPECIFICATIONS OR AS DIRECTED BY THE ENGINEER.

LOOP LEAD-IN CABLE TAG

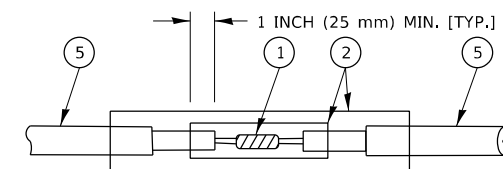


- A. LANE 1 IS THE LANE CLOSEST TO THE CENTERLINE OF THE ROADWAY
- B. LOOP #1 IS THE LOOP IN THE LANE CLOSEST TO THE INTERSECTION.
- C. LABEL LOOP CABLE "IN" OR LOOP CABLE "OUT".
- D. LABEL LOOP CABLE CLOCKWISE OR LOOP CABLE COUNTERCLOCKWISE.

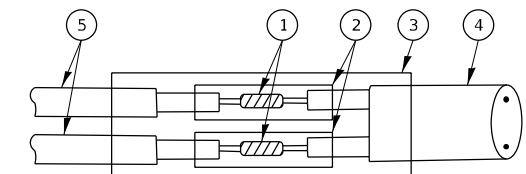


DETECTOR LOOP WIRING SCHEMATIC

- LOOPS SHALL BE SPLICED IN SERIES. SAW-CUTS SHALL BE A MINIMUM WIDTH OF 5/16" (8 mm).
- SAW-CUT DEPTHS SHALL BE 3" (75 mm), IF IN CONCRETE.
- THE SAW-CUT DEPTH SHALL BE TO THE TOP OF THE REINFORCEMENT.
- LOOP CORNERS SHALL BE DRILLED WITH A 2" (50 mm) DIAMETER CORE.

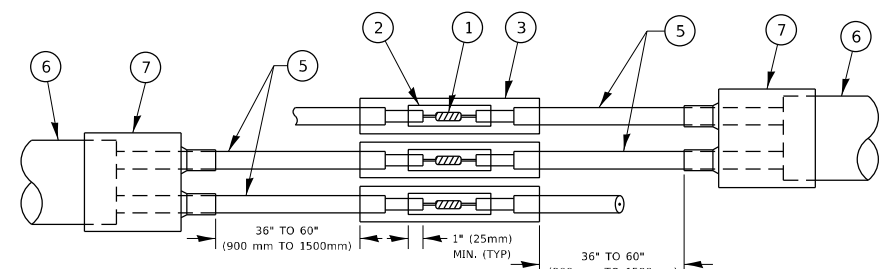


DETAIL "A"
LOOP-TO-LOOP SPLICE

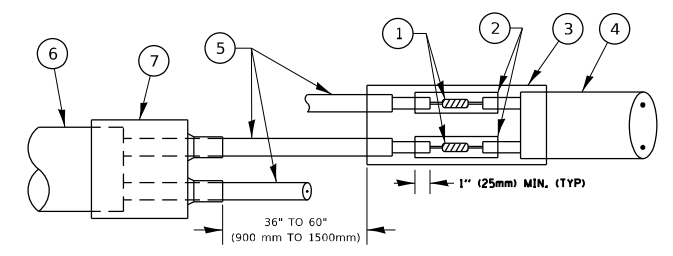


DETAIL "B"
LOOP-TO-CONTROLLER SPLICE

TYPE I LOOP



DETAIL "A"
LOOP-TO-LOOP SPLICE



DETAIL "B"
LOOP-TO-CONTROLLER SPLICE

PREFORMED LOOP

LOOP DETECTOR SPLICE

- 1 WESTERN UNION SPLICE SOLDERED WITH ROSIN CORE FLUX. ALL EXPOSED SURFACES OF THE SOLDER SHALL BE SMOOTH. THE WESTERN UNION SPLICES SHALL BE STAGGERED.
- 2 WCSMW 30/100 HEAT SHRINK TUBE, MINIMUM LENGTH 3" (75 mm), UNDERWATER GRADE.
- 3 WCS 200/750 HEAT SHRINK TUBE, MINIMUM LENGTH 6" (150 mm), UNDERWATER GRADE.
- 4 NO. 14 2/C TWISTED, SHIELDED CABLE.
- 5 LOOP CONDUCTOR WITH FLEXIBLE PLASTIC TUBE. PREFORMED LOOP
- 6 XL POLYOLEFIN 2 CONDUCTOR
- 7 BREAKOUT SEALS, TYCO CBR-2 OR APPROVED EQUAL

STATE OF ILLINOIS
DEPARTMENT OF TRANSPORTATION

DISTRICT ONE
STANDARD TRAFFIC SIGNAL DESIGN DETAILS

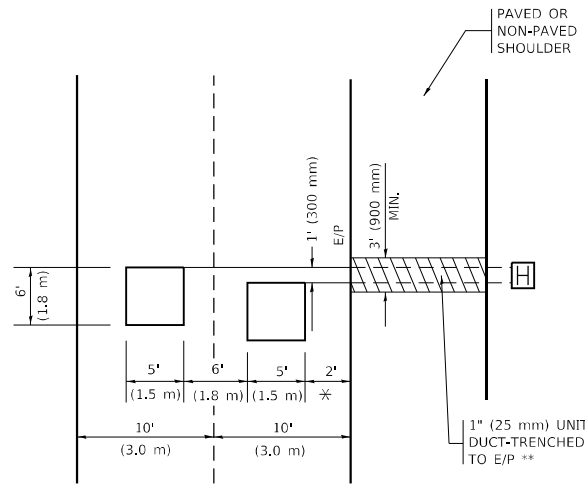
SCALE: NONE SHEET 2 OF 7 SHEETS STA. TO STA.

F.A.U. RTE.	SECTION	COUNTY	TOTAL SHEETS	SHEET NO.
383	FAU 0383 22 RS	WILL	33	32
TS-05			CONTRACT NO. 62T35	
ILLINOIS FED. AID PROJECT				

MODEL: Default
 FILE: \\bldcaw-beadefy.com\FW\DOT\Documents\DOT Office\Distrdet_1\Project\1D128627\CaddData\Design\DistStd.dgn

LOOPS NEXT TO SHOULDERS

PROVIDE A PAVEMENT REPLACEMENT NOTE WHICH SHOULD EQUAL 3' (900 mm) X WIDTH OF PAVED SHOULDER.

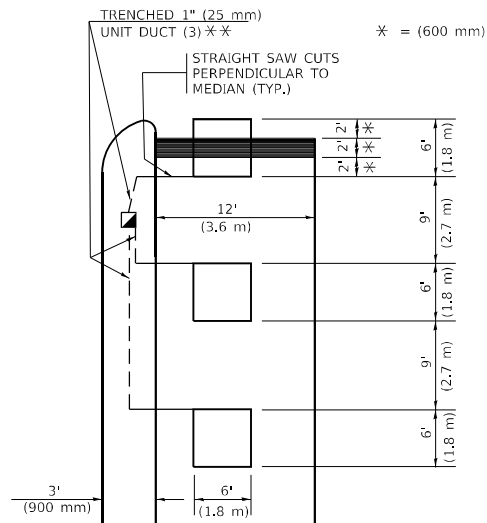


* = (600 mm)

** UNIT DUCT IS TO BE SHOWN ON PLAN SHEETS BUT SHALL NOT BE INCLUDED IN THE PAY ITEMS.

LEFT TURN LANES WITH MEDIANS
VOLUME DENSITY ("FAR OUT" DETECTION)
ON SAME APPROACH
(PROTECTED / PERMITTED LEFT TURN PHASING)

HANDHOLE LOCATION MAY VARY DEPENDING ON GEOMETRICS AND DESIGN OF TRAFFIC SIGNALS. HEAVY-DUTY HANDHOLES TO BE USED WHEN THE MEDIAN IS MOUNTABLE. REFER TO STANDARD 814001 TO ENSURE THAT HANDHOLE FITS IN MEDIAN.

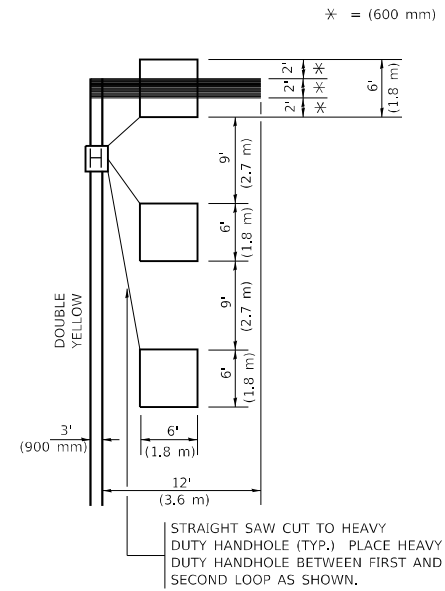


* = (600 mm)

** UNIT DUCT IS TO BE SHOWN ON PLAN SHEETS BUT SHALL NOT BE INCLUDED IN THE PAY ITEMS.

NOTE: DUAL LEFT TURNS NOT SHOWN REFER TO PLAN SHEET FOR DETECTOR LOOP REPLACEMENT

LEFT TURN LANES WITHOUT MEDIANS
VOLUME DENSITY ("FAR OUT" DETECTION)
ON SAME APPROACH
(PROTECTED / PERMITTED LEFT TURN PHASING)



* = (600 mm)

NOTE: DUAL LEFT TURNS NOT SHOWN REFER TO PLAN SHEET FOR DETECTOR LOOP REPLACEMENT

NOTES:

VEHICLES LOOP DETECTORS

- * ALL LEAD IN CABLE SHALL BE TWO CONDUCTOR NO. 14 TWISTED, SHIELDED.
- * EACH DETECTOR LOOP SHALL HAVE ITS OWN SAW CUT FROM THE LOOP TO THE EDGE OF PAVEMENT OR TO A HANDHOLE IN THE PAVEMENT.
- * EACH DETECTOR LOOP SHALL HAVE ITS OWN ONE INCH (25 mm) UNIT DUCT BETWEEN THE EDGE OF PAVEMENT AND THE FIRST HANDHOLE OR JUNCTION BOX. EACH UNIT DUCT RUN SHALL BE SHOWN ON THE PLANS BY THE DESIGNER, BUT SHALL NOT BE PAID FOR SEPARATLY. THIS ITEM IS INCIDENTAL TO THE PAY ITEM FOR DETECTOR LOOPS.
- * ONE DIMENSION OF ALL DETECTOR LOOPS SHALL BE SIX FEET (1.8 m)
- * EACH LANE OF NON-LOCKING, PRESENCE DETECTION AND EACH LANE OF A DOUBLE LEFT TURN LANE REQUIRES A SEPARATE INDUCTIVE LOOP DETECTOR AND LEAD IN CABLE.
- * WHEN NON-LOCKING, PRESENCE DETECTION IS USED, MORE THAN ONE LOOP PER LANE IS REQUIRED BEHIND THE STOP BAR (i.e. 1-1/2, 1-3/4, 2).
- * WHEN SYSTEM LOOPS ARE REQUIRED ON AN APPROACH OF AN INTERSECTION, THE LOOPS USED FOR VOLUME DENSITY AND INTERSECTION TIMING SHALL ALSO BE USED AS SYSTEM DETECTORS. EACH ONE OF THESE TYPE OF LOOPS REQUIRES A SEPARATE TWO CONDUCTOR NO. 14 TWISTED SHIELDED CABLE AND A SEPARATE INDUCTIVE LOOP DETECTOR WHEN NEW CONTROLLERS ARE UTILIZED. THE DESIGNER SHALL LABEL THESE TYPES OF LOOPS AS "INTERSECTION AND SAMPLING (SYSTEM) DETECTORS" ON THE SIGNAL LAYOUT, THE INTERCONNECT PLAN AND THE SYSTEM CABLE PLAN. WHEN AN EXISTING CONTROLLER IS UTILIZED FOR THIS TYPE OF DETECTION, THE PAY ITEM "INDUCTIVE LOOP DETECTOR WITH SYSTEM OUTPUT" SHOULD BE USED.

PLACEMENT OF DETECTORS

THE FOLLOWING FIGURES REPRESENT THE MOST COMMON DETECTOR LOOP LOCATIONS AND SIZES. ADJUSTMENTS WILL BE NECESSARY FOR SPECIFIC GEOMETRIC CONSIDERATIONS.

LOCATIONS AND DEMENSIONS OF DETECTOR LOOPS ARE REQUIRED ON ALL SIGNAL LAYOUT PLAN SHEETS.

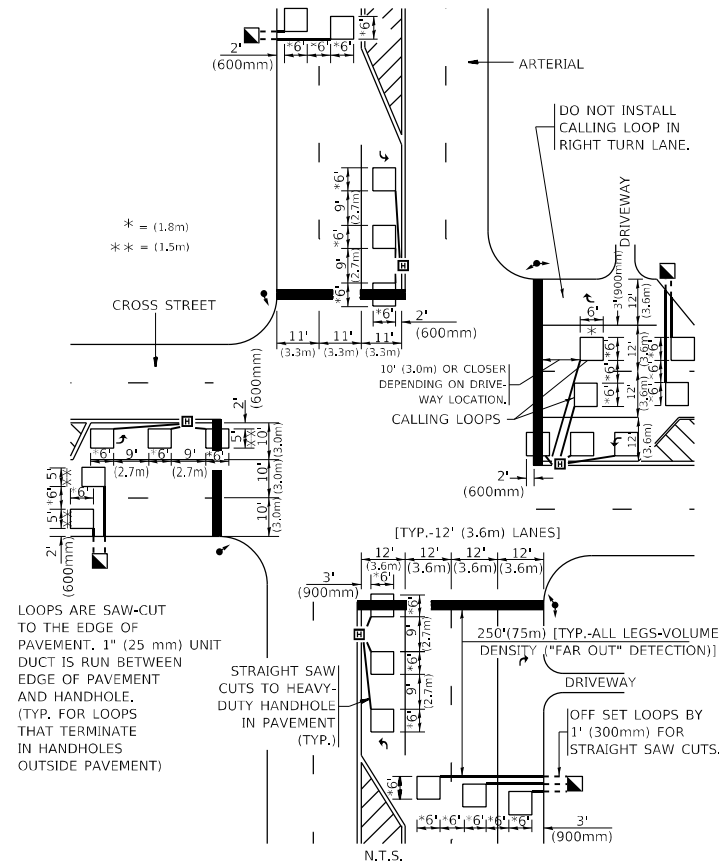
"FAR OUT" DETECTION REFERS TO LOCKING, PRESENCE TYPE DETECTION LOCATED IN THRU LANES, RIGHT TURN LANES, AND RIGHT TURN LANE TAPER AREAS (IF APPLICABLE), USUALLY 250' (75 m) IN ADVANCE OF STOP BARS. "UPTIGHT" DETECTION REFERS TO NON-LOCKING PRESENCE TYPE DETECTION LOCATED IN ALL LANES AND 10'-15' (3.0 m-4.5 m) BEHIND THE CROSSING STREET'S EDGE OF PAVEMENT EXTENDED.

NOTE:

ALL DETAILS AND NOTES SHOWN ARE FROM THE I.D.O.T. DISTRICT 1 TRAFFIC SIGNAL DESIGN GUIDELINES DATED JANUARY 1995

THIS DRAWING HAS BEEN PREPARED TO ASSIST THE RESIDENT ENGINEER FOR ALL ROADWAY RESURFACING OR S.M.A.R.T. PROJECTS WHERE THE DIMENSIONS ARE NOT SHOWN ON THE PLANS AND THE FINAL LOCATIONS FOR CROSSWALKS OR STOP BARS ARE NOT DETERMINED.

ARTERIAL-VOLUME DENSITY ("FAR OUT" DETECTION)
CROSS STREET-NON VOLUME DENSITY ("FAR OUT" DETECTION)



* = (1.8m)
 ** = (1.5m)

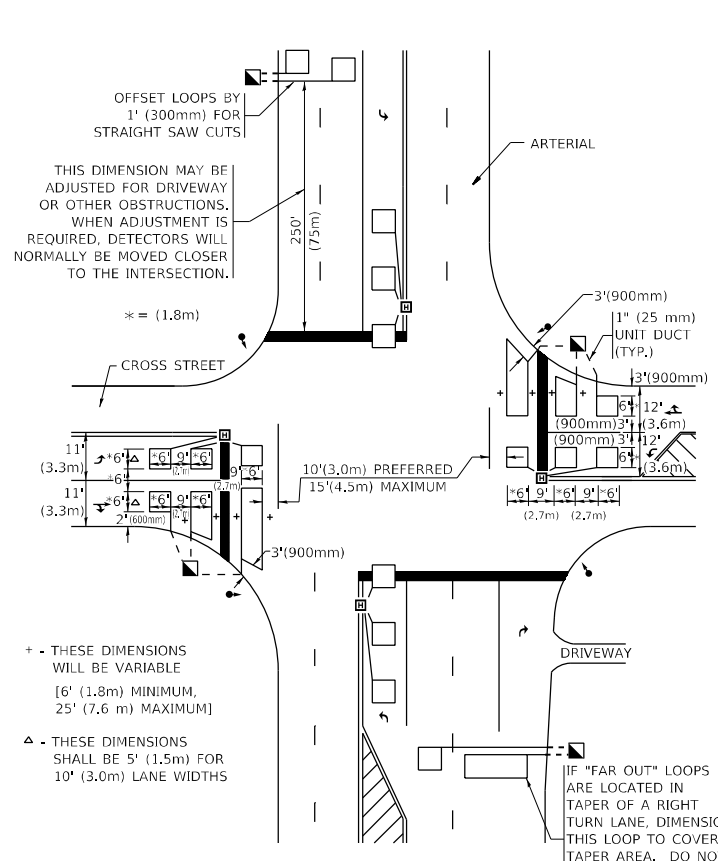
LOOPS ARE SAW-CUT TO THE EDGE OF PAVEMENT. 1" (25 mm) UNIT DUCT IS RUN BETWEEN EDGE OF PAVEMENT AND HANDHOLE. (TYP. FOR LOOPS THAT TERMINATE IN HANDHOLES OUTSIDE PAVEMENT)

STRAIGHT SAW CUTS TO HEAVY-DUTY HANDHOLE IN PAVEMENT (TYP.)

[TYP.-12' (3.6m) LANES]
 250' (75m) [TYP.-ALL LEGS-VOLUME DENSITY ("FAR OUT" DETECTION)]
 DRIVEWAY
 OFF SET LOOPS BY 1' (300mm) FOR STRAIGHT SAW CUTS.

DETAIL 1
 N.T.S.

ARTERIAL-VOLUME DENSITY ("FAR OUT" DETECTION)
CROSS STREET-NON VOLUME DENSITY ("UPTIGHT" PRESENCE DETECTION)



THIS DIMENSION MAY BE ADJUSTED FOR DRIVEWAY OR OTHER OBSTRUCTIONS. WHEN ADJUSTMENT IS REQUIRED, DETECTORS WILL NORMALLY BE MOVED CLOSER TO THE INTERSECTION.

+ THESE DIMENSIONS WILL BE VARIABLE [6' (1.8m) MINIMUM, 25' (7.6 m) MAXIMUM]
 Δ THESE DIMENSIONS SHALL BE 5' (1.5m) FOR 10' (3.0m) LANE WIDTHS

IF "FAR OUT" LOOPS ARE LOCATED IN TAPER OF A RIGHT TURN LANE, DIMENSION THIS LOOP TO COVER TAPER AREA. DO NOT COVER THE LEFT TURN LANE OR LEFT TURN LANE TAPER.

DETAIL 2
 N.T.S.

STATE OF ILLINOIS
DEPARTMENT OF TRANSPORTATION

DISTRICT 1 - DETECTOR LOOP INSTALLATION
DETAILS FOR ROADWAY RESURFACING

SCALE: NONE SHEET 1 OF 1 SHEETS STA. TO STA.

F.A.U. RTE.	SECTION	COUNTY	TOTAL SHEETS	SHEET NO.
383	FAU 0383 22 RS	WILL	33	33
TS-07		CONTRACT NO. 62T35		
		ILLINOIS	FED. AID PROJECT	