

STATE OF ILLINOIS  
DEPARTMENT OF TRANSPORTATION

F.A.P. RTE.	SECTION	COUNTY	TOTAL SHEETS	SHEET NO.
317	(20,21)RS-6	IROQUOIS	22	1
		ILLINOIS	CONTRACT NO. 66M89	

**INDEX OF SHEETS**

- 1 COVER SHEET
- 2 GENERAL NOTES
- 3-7 SUMMARY OF QUANTITIES
- 8-9 TYPICAL SECTIONS
- 10 LINE DIAGRAM
- 11-15 SCHEDULES
- 16-22 DETAILS

**HIGHWAY STANDARDS**

- 000001-08 STANDARD SYMBOLS, ABBREVIATIONS AND PATTERNS
- 001006 DECIMAL OF AN INCH AND OF A FOOT
- 406201-01 MAILBOX TURNOUT
- 420406 PAVEMENT CONNECTOR (HMA) FOR BRIDGE APPROACH SLAB
- 442201-03 CLASS C AND D PATCHES
- 542301-03 PRECAST REINFORCED CONCRETE FLARED END SECTION
- 635001-02 DELINEATORS
- 667101-02 PERMANENT SURVEY MARKERS
- 701001-02 OFF-ROAD OPERATIONS 2L, 2W, MORE THAN 15' AWAY
- 701006-05 OFF-ROAD OPERATIONS 2L, 2W, 15' TO 24" FROM PAVEMENT EDGE
- 701201-05 LANE CLOSURE, 2L, 2W, DAY ONLY, FOR SPEEDS ≥ 45 MPH
- 701206-05 LANE CLOSURE, 2L, 2W, NIGHT ONLY, FOR SPEEDS ≥ 45 MPH
- 701306-04 LANE CLOSURE, 2L, 2W, SLOW MOVING OPERATIONS DAY ONLY, FOR SPEEDS ≥ 45 MPH
- 701311-03 LANE CLOSURE, 2L, 2W, MOVING OPERATIONS - DAY ONLY
- 701901-08 TRAFFIC CONTROL DEVICES
- 780001-05 TYPICAL PAVEMENT MARKINGS
- 781001-04 TYPICAL APPLICATIONS RAISED REFLECTIVE PAVEMENT MARKERS

# PROPOSED HIGHWAY PLANS

## FAP ROUTE 317 (US 24) SECTION (20,21)RS-6 PROJECT NHPP-1NZS(901) SMART OVERLAY IROQUOIS COUNTY

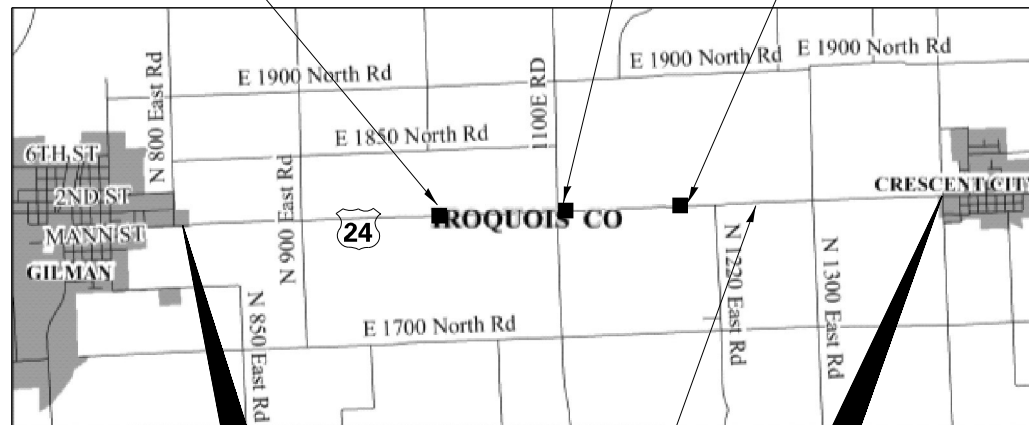
C-93-109-22



BR OMISSION SN 038-0032 STA. 1862+74.19 TO STA. 1863+81.7

BR OMISSION SN 038-0033 STA. 1913+24.17 TO STA. 1915+10.27

BR OMISSION SN 038-0034 STA. 1965+31.37 TO STA. 1967+39.07

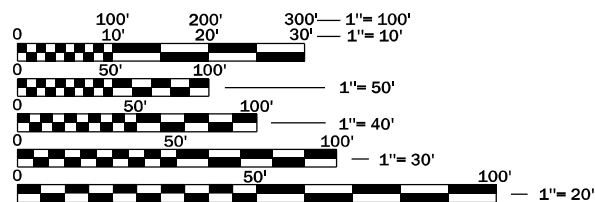


BEGIN IMPROVEMENT  
STA 1758+00

STA EQUATION  
1991+00(BK)=  
1990+88.31(AH)

END IMPROVEMENT  
STA 2067+82

LOCATION MAP  
(NOT TO SCALE)



FULL SIZE PLANS HAVE BEEN PREPARED USING STANDARD ENGINEERING SCALES. REDUCED SIZED PLANS WILL NOT CONFORM TO STANDARD SCALES. IN MAKING MEASUREMENTS ON REDUCED PLANS, THE ABOVE SCALES MAY BE USED.

J.U.L.I.E.  
JOINT UTILITY LOCATION INFORMATION FOR EXCAVATION  
1-800-892-0123  
OR 811

PROJECT ENGINEER: JOE KANNEL, P.E.  
UNIT CHIEF; DARCY MITCHELL  
DISTRICT 3 NO. (815) 434-6131  
CONTRACT NO. 66M89

GROSS LENGTH = 30,993.69 FT. = 5.87 MILE  
NET LENGTH = 29,716.69 FT. = 5.63 MILE

FUNCTIONAL CLASSIFICATION  
OTHER PRINCIPAL ARTERIAL (RURAL)

ADT (2021) = 3300  
P.V. = 84.0% M.U. = 12.1% S.U. = 3.9%

STATE OF ILLINOIS  
DEPARTMENT OF TRANSPORTATION

SUBMITTED May 11, 2023

*David Ahmed*  
REGIONAL ENGINEER

June 30, 2023 *Scott A. Etk*  
ENGINEER OF DESIGN AND ENVIRONMENT

June 30, 2023 *Stephen M. Spivey*  
DIRECTOR OF HIGHWAYS PROJECT IMPLEMENTATION

PRINTED BY THE AUTHORITY  
OF THE STATE OF ILLINOIS

**GENERAL NOTES**

THE HMA SURFACE OF ALL MAILBOX TURNOUTS, PRIVATE ENTRANCES, COMMERCIAL ENTRANCES, AND SIDE ROADS SHALL BE MADE NEATLY, IN A WORKMANLIKE MANNER, AND SHALL ACCURATELY CONFORM TO THE SHAPES AND DIMENSIONS SHOWN ON THE PLAN DETAILS. IF REQUIRED BY THE ENGINEER, THE CONTRACTOR SHALL SAW CUT THE HMA SURFACE TO CONFORM TO THE SHAPES AND DIMENSIONS SHOWN ON THE PLAN DETAILS. THIS WORK WILL BE INCLUDED IN THE COST OF THE HMA SURFACE.

EXCEPT AS NOTED ON THE PLANS, PAVEMENT GRADES SHOWN ARE AT THE TOP OF PAVEMENT SURFACES.

BEFORE ORDERING PIPE CULVERTS OR PIPE DRAINS, THE CONTRACTOR SHALL CONSULT THE ENGINEER FOR EXACT LENGTHS.

THE ENGINEER WILL BE THE SOLE JUDGE CONCERNING CURING TIME FOR THE VARIOUS HMA LIFTS.

THE FINISHED EARTHWORK SHALL HAVE A VEGETATION SUSTAINING SOIL COVERING THE TOP FOUR INCHES ( 100 MILLIMETERS) IN AREAS TO BE SEEDED OR SODDED. THE VEGETATION SUSTAINING SOIL REQUIRED WILL NOT BE PAID FOR SEPARATELY BUT WILL BE INCLUDED IN THE COST OF FURNISHED EXCAVATION.

ON EXISTING PAVEMENT WHICH MAY BE SUPERELEVATED, THE NEW HMA PAVEMENT SHALL BE BUILT WITH THE SAME SUPERELEVATION UNLESS NEW SUPERELEVATION RATES ARE GIVEN ON THE PLANS.

ALL ELEVATIONS REFERRING TO U.S.G.S. MEAN SEA LEVEL DATUM.

THE FOLLOWING RATES OF APPLICATION HAVE BEEN USED IN CALCULATING PLAN QUANTITIES:

HMA RESURFACING	112	LBS / SQ YD / IN
SHORT TERM PAVEMENT MARKING	10	FT /100 FT OF APPLICATION

MEMBERS OF JULIE KNOWN TO BE WITHIN THE LIMITS OF THE IMPROVEMENT ARE: AMEREN, AT&T, COMCAST, CITY OF CRESCENT CITY, EASTERN ILLINI ELECTRIC COOP, ERH ENTERPRISES, CITY OF GILMAN, MARATHON-MARTINSVILLE PIPELINE, MEDIACOM, METRO COMMUNICATIONS, MIDWESTERN GAS TRANSMISSION-ONEOK, AND NICOR.

NON-MEMBERS OF JULIE KNOWN TO BE WITHIN THE LIMITS OF THE IMPROVEMENT ARE:

THE CONTRACTOR SHALL CONTACT JULIE AT LEAST 48 HOURS PRIOR TO EXCAVATION TO DETERMINE WHICH UTILITIES ARE IN THE AREA.

**COMMITMENTS:**

NONE

**HMA MIXTURE REQUIREMENT TABLE**

LOCATIONS:	ENTIRE PROJECT	ENTIRE PROJECT
MIXTURE USE(S):	HMA SURFACE	INCIDENTAL HMA
BINDER GRADE (PG):	PG 64-22	PG 64-22
DESIGN AIR VOIDS:	4.0% @ N70	4.0% @ N70
MIXTURE COMPOSITION: (MIXTURE GRADATION)	IL 9.5	IL 9.5
FRICITION AGGREGATE:	MIXTURE C	
MIXTURE WEIGHT:	112.0 LB/SY/IN	112.0 LB/SY/IN
QUALITY MANAGEMENT PROGRAM:	QCP	QCQA
SUBLOT SIZE:	1000 TONS	N/A
DENSITY TEST METHOD:	CORES	SATISFACTION OF ENGINEER
MATERIAL TRANSFER DEVICE (REQUIRED)	YES	NO

STATE OF ILLINOIS  
DEPARTMENT OF TRANSPORTATION  
DISTRICT THREE  
AS BUILT INFORMATION

\_\_\_\_\_  
SUPERVISING CONSTRUCTION FIELD ENGINEER

\_\_\_\_\_  
RESIDENT ENGINEER / TECHNICIAN

START & END DATES  
OF CONSTRUCTION:

\_\_\_\_\_  
INSPECTORS:

\_\_\_\_\_

\_\_\_\_\_

MODEL: General Notes (Sheet)  
 FILE NAME: P:\Bids\2021\03\03\DOT\Office\District 3\03RD Project\03\366M89\CAD\03\66M89 Covers\Sheet - General

USER NAME = timothy.zletsch	DESIGNED -	REVISED -
	DRAWN -	REVISED -
PLOT SCALE = 0.16666633' / in.	CHECKED -	REVISED -
PLOT DATE = 5/11/2023	DATE -	REVISED -

**STATE OF ILLINOIS  
DEPARTMENT OF TRANSPORTATION**

**GENERAL NOTES**

SCALE: SHEET OF SHEETS STA. \_\_\_+\_\_\_ TO STA. \_\_\_+\_\_\_

F.A.P. RTE.	SECTION	COUNTY	TOTAL SHEETS	SHEET NO.
317	[20,21]RS-6	IROQUOIS	22	2
CONTRACT NO. 66M89				
ILLINOIS FED. AID PROJECT				

MODEL: SOO SHEET 01 (Sheet)  
 FILE NAME: P:\MSDCAD\Drawings\DOT Office\District 3\ORD Project\366M89\CADD\366M89\_SOO

CODE NO.	ITEM	UNIT	TOTAL QUANTITY	CONSTR. CODE	
				80% FED	20% ST
				ROADWAY	
				0005	
				RURAL	
20200100	EARTH EXCAVATION	CU YD	232	232	
20400800	FURNISHED EXCAVATION	CU YD	65	65	
20800150	TRENCH BACKFILL	CU YD	34	34	
21400100	GRADING AND SHAPING DITCHES	FOOT	1900	1900	
25000210	SEEDING, CLASS 2A	ACRE	0.4	0.4	
25000400	NITROGEN FERTILIZER NUTRIENT	POUND	39	39	
25000500	PHOSPHORUS FERTILIZER NUTRIENT	POUND	39	39	
25000600	POTASSIUM FERTILIZER NUTRIENT	POUND	39	39	
25100630	EROSION CONTROL BLANKET	SQ YD	2111	2111	
28100107	STONE RIPRAP, CLASS A4	SQ YD	8	8	
28100701	STONE DUMPED RIPRAP, CLASS A1	SQ YD	20	20	
28200200	FILTER FABRIC	SQ YD	8	8	
40200800	AGGREGATE SURFACE COURSE, TYPE B	TON	85	85	
40600290	BITUMINOUS MATERIALS (TACK COAT)	POUND	46815	46815	

USER NAME = timothy.zletsch	DESIGNED -	REVISED -
	DRAWN -	REVISED -
PLOT SCALE = 0.16666633' / in.	CHECKED -	REVISED -
PLOT DATE = 5/11/2023	DATE -	REVISED -

**STATE OF ILLINOIS**  
**DEPARTMENT OF TRANSPORTATION**

SCALE: SHEET 1 OF 4 SHEETS STA. \_\_\_+\_\_\_ TO STA. \_\_\_+\_\_\_

**SUMMARY OF QUANTITIES**

F.A.P. RTE.	SECTION	COUNTY	TOTAL SHEETS	SHEET NO.
317	[20,21]RS-6	IROQUOIS	22	3
CONTRACT NO. 66M89				
ILLINOIS FED. AID PROJECT				

MODEL: SDO SHEET 02 (Sheet)  
 FILE NAME: P:\GIS\Projects\DOT\Office\District 3\ORD Project\CD366M89\CD366M89\_SDO

CODE NO.	ITEM	UNIT	TOTAL QUANTITY	CONSTR. CODE	
				80% FED	20% ST
				ROADWAY	
				0005	
				RURAL	
40600370	LONGITUDINAL JOINT SEALANT	FOOT	30159	30159	
40600400	MIXTURE FOR CRACKS, JOINTS, AND FLANGEWAYS	TON	30	30	
40600990	TEMPORARY RAMP	SQ YD	170	170	
40604052	HOT-MIX ASPHALT SURFACE COURSE, IL-9.5, MIX "C", N70	TON	8444	8444	
40800050	INCIDENTAL HOT-MIX ASPHALT SURFACING	TON	181	181	
42000070	PAVEMENT CONNECTOR (HMA) FOR BRIDGE APPROACH SLAB	SQ YD	164	164	
44000100	PAVEMENT REMOVAL	SQ YD	164	164	
44000155	HOT-MIX ASPHALT SURFACE REMOVAL, 1 1/2"	SQ YD	104030	104030	
44201839	CLASS D PATCHES, TYPE II, 16 INCH	SQ YD	490	490	
44213200	SAWCUTS	FOOT	95	95	
48102100	AGGREGATE WEDGE SHOULDER, TYPE B	TON	859	859	
48203100	HOT-MIX ASPHALT SHOULDERS	TON	112	112	
50105220	PIPE CULVERT REMOVAL	FOOT	62	62	
542A1063	PIPE CULVERTS, CLASS A, TYPE 2 18"	FOOT	62	62	

USER NAME = timothy.zletsch	DESIGNED -	REVISED -
	DRAWN -	REVISED -
PLOT SCALE = 0.16666633' / in.	CHECKED -	REVISED -
PLOT DATE = 5/11/2023	DATE -	REVISED -

**STATE OF ILLINOIS  
 DEPARTMENT OF TRANSPORTATION**

**SUMMARY OF QUANTITIES**

SCALE: SHEET 2 OF 4 SHEETS STA. \_\_\_+\_\_\_ TO STA. \_\_\_+\_\_\_

F.A.P. RTE.	SECTION	COUNTY	TOTAL SHEETS	SHEET NO.
317	[20,21]RS-6	IROQUOIS	22	4
CONTRACT NO. 66M89				
ILLINOIS FED. AID PROJECT				



CONSTR. CODE

80% FED 20% ST

CODE NO.	ITEM	UNIT	TOTAL QUANTITY	ROADWAY	
				0005	RURAL
54213447	END SECTIONS 12"	EACH	1	1	
54213663	PRECAST REINFORCED CONCRETE FLARED END SECTIONS 18"	EACH	2	2	
59300100	CONTROLLED LOW-STRENGTH MATERIAL	CU YD	10	10	
60100945	PIPC DRAINS 12"	FOOT	10	10	
60905305	BOX CULVERTS TO BE CLEANED	FOOT	132	132	
60920015	PIPE CULVERTS TO BE CLEANED 15"	FOOT	70	70	
60920018	PIPE CULVERTS TO BE CLEANED 18"	FOOT	60	60	
63500105	DELINEATORS	EACH	26	26	
* 66700205	PERMANENT SURVEY MARKERS, TYPE I	EACH	2	2	
* 66900200	NON-SPECIAL WASTE DISPOSAL	CU YD	105	105	
* 66900530	SOIL DISPOSAL ANALYSIS	EACH	3	3	
* 66901001	REGULATED SUBSTANCES PRE-CONSTRUCTION PLAN	L SUM	1	1	
* 66901003	REGULATED SUBSTANCES FINAL CONSTRUCTION REPORT	L SUM	1	1	
* 66901006	REGULATED SUBSTANCES MONITORING	CAL DA	7	7	

\* = SPECIALTY ITEM

MODEL: SDO SHEET 03 (Sheet)  
FILE NAME: P:\BSP\Projects\2023\DOT\Office\District 3\ORD Project\Drawings\CADD\Drawings\SDO

USER NAME = timothy.zletsch	DESIGNED -	REVISED -
	DRAWN -	REVISED -
PLOT SCALE = 0.16666833' / in.	CHECKED -	REVISED -
PLOT DATE = 5/11/2023	DATE -	REVISED -

**STATE OF ILLINOIS  
DEPARTMENT OF TRANSPORTATION**

**SUMMARY OF QUANTITIES**

SCALE: SHEET 3 OF 4 SHEETS STA. \_\_\_+\_\_\_ TO STA. \_\_\_+\_\_\_

F.A.P. RTE.	SECTION	COUNTY	TOTAL SHEETS	SHEET NO.
317	[20,21]RS-6	IROQUOIS	22	5
CONTRACT NO. 66M89				
ILLINOIS FED. AID PROJECT				

CONSTR. CODE	
80% FED	20% ST

CODE NO.	ITEM	UNIT	TOTAL QUANTITY	ROADWAY	
				0005	RURAL
67000400	ENGINEER'S FIELD OFFICE, TYPE A	CAL MO	8	8	
67100100	MOBILIZATION	L SUM	1	1	
70100450	TRAFFIC CONTROL AND PROTECTION, STANDARD 701201	L SUM	1	1	
70100455	TRAFFIC CONTROL AND PROTECTION, STANDARD 701206	L SUM	1	1	
70100460	TRAFFIC CONTROL AND PROTECTION, STANDARD 701306	L SUM	1	1	
70200100	NIGHTTIME WORK ZONE LIGHTING	L SUM	1	1	
70300100	SHORT TERM PAVEMENT MARKING	FOOT	9298	9298	
70300150	SHORT TERM PAVEMENT MARKING REMOVAL	SQ FT	1033	1033	
* 78009004	MODIFIED URETHANE PAVEMENT MARKING - LINE 4"	FOOT	123976	123976	
* 78009006	MODIFIED URETHANE PAVEMENT MARKING - LINE 6"	FOOT	15497	15497	
* 78100100	RAISED REFLECTIVE PAVEMENT MARKER	EACH	387	387	
* 78200005	GUARDRAIL REFLECTORS, TYPE A	EACH	24	24	
78300200	RAISED REFLECTIVE PAVEMENT MARKER REMOVAL	EACH	387	387	
X5010523	REMOVE CONCRETE END SECTION	EACH	2	2	

\*= SPECIALTY ITEM

MODEL: SOO SHEET 04 (Sheet)  
FILE NAME: P:\MIDOT\Documents\DOT Office\District 3\ORD Project\0366M89\CADD\0366M89\_SOO

USER NAME = timothy.zletsch	DESIGNED -	REVISED -
	DRAWN -	REVISED -
PLOT SCALE = 0.16666633' / in.	CHECKED -	REVISED -
PLOT DATE = 5/17/2023	DATE -	REVISED -

**STATE OF ILLINOIS  
DEPARTMENT OF TRANSPORTATION**

**SUMMARY OF QUANTITIES**

SCALE: SHEET 4 OF 4 SHEETS STA. \_\_\_+\_\_\_ TO STA. \_\_\_+\_\_\_

F.A.P. RTE.	SECTION	COUNTY	TOTAL SHEETS	SHEET NO.
317	[20,21]RS-6	IROQUOIS	22	6
CONTRACT NO. 66M89				
ILLINOIS FED. AID PROJECT				

MODEL: SOO SHEET OF (Sheet)  
 FILE NAME: P:\MSDCAD\Drawings\DOT Office\District 3\ORD Project\0366\M89\CADD\0366\M89 SOO

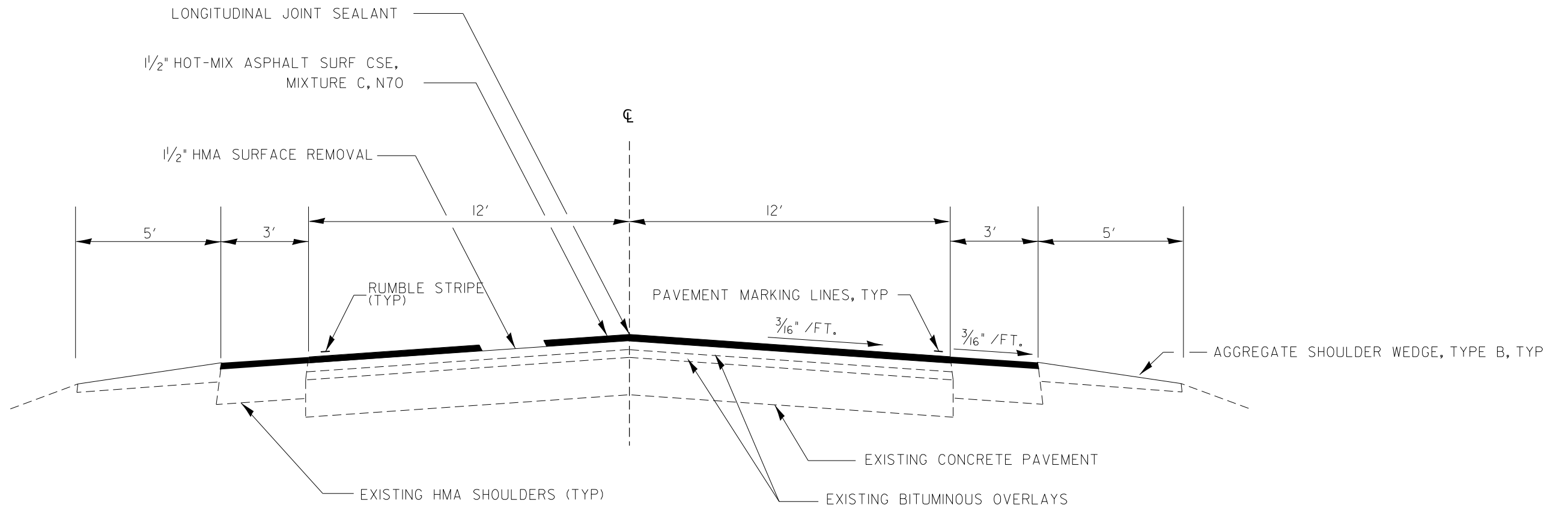
CODE NO.	ITEM	UNIT	TOTAL QUANTITY	CONSTR. CODE	
				ROADWAY	RURAL
				80% FED 20% ST	
				0005	
X6010003	PIPE DRAIN REMOVAL	FOOT	10		10
X6350204	LINEAR DELINEATOR PANELS, 4 INCH	EACH	30		30
X5420150	MASTIC REPAIR FOR CULVERTS	L SUM	1		1
Z0030850	TEMPORARY INFORMATION SIGNING	SQ FT	42		42
Z0034105	MATERIAL TRANSFER DEVICE	TON	8444		8444
Z0055400	RUMBLE STRIP	FOOT	58696		58696

USER NAME = timothy.zletsch	DESIGNED - _____	REVISED - _____
	DRAWN - _____	REVISED - _____
PLOT SCALE = 0.16666633' / in.	CHECKED - _____	REVISED - _____
PLOT DATE = 5/17/2023	DATE - _____	REVISED - _____

**STATE OF ILLINOIS  
 DEPARTMENT OF TRANSPORTATION**

SCALE: SHEET 14 OF 15 SHEETS STA. \_\_\_+\_\_\_ TO STA. \_\_\_+\_\_\_

F.A.P. RTE.	SECTION	COUNTY	TOTAL SHEETS	SHEET NO.
317	[20,21]RS-6	IROQUOIS	22	7
CONTRACT NO. 66M89			ILLINOIS FED. AID PROJECT	



**TYPICAL SECTION 1**

STA 1758+00 TO 2067+82

OMIT BRIDGES

STA 1862+74.19 TO 1863+81.7

STA 1913+24.17 TO 1915+10.27

STA 1965+31.37 TO 1967+39.07

NOTE:

A MINIMUM OF 3' IS REQUIRED BETWEEN THE RUMBLE STRIPE AND THE EDGE OF SHOULDER.

MODEL: Typical Section (Sheet)  
 FILE NAME: P:\Public\cctambly.com\PI\DOT\Documents\DOT Office\District 3\ORD Project\0366M89\CAD\0366M89 Typical Section

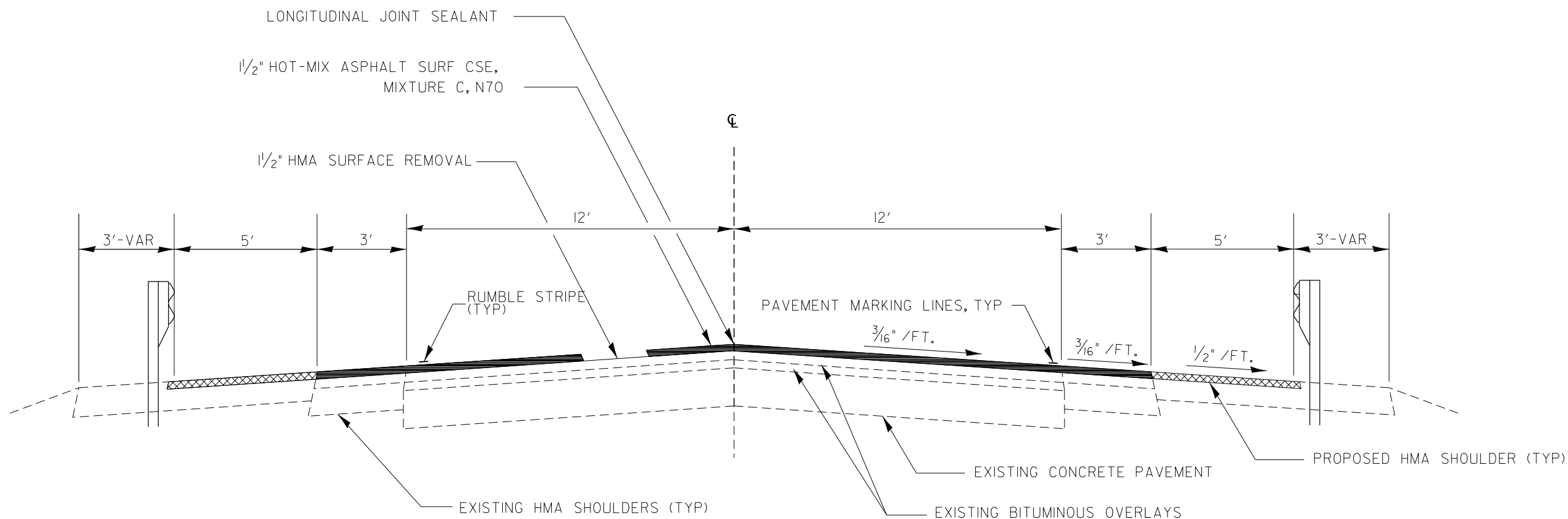
USER NAME = timothy.zletsch	DESIGNED -	REVISED -
	DRAWN -	REVISED -
PLOT SCALE = 0.16666833' / in.	CHECKED -	REVISED -
PLOT DATE = 5/11/2023	DATE -	REVISED -

**STATE OF ILLINOIS  
DEPARTMENT OF TRANSPORTATION**

TYPICAL SECTIONS

SCALE: SHEET 1 OF 2 SHEETS STA. \_\_\_+\_\_\_ TO STA. \_\_\_+\_\_\_

F.A.P. RTE.	SECTION	COUNTY	TOTAL SHEETS	SHEET NO.
317	[20,21]RS-6	IROQUOIS	22	8
CONTRACT NO. 66M89				
ILLINOIS FED. AID PROJECT				



**TYPICAL SECTION 2**

STA 1862+74.19 TO 1863+81.7  
 STA 1913+24.17 TO 1915+10.27  
 STA 1965+31.37 TO 1967+39.07

(OMIT BRIDGES SN'S 038-0032, 038-0033, 038-034)

NOTE:

A MINIMUM OF 3' IS REQUIRED BETWEEN THE RUMBLE STRIPE AND THE EDGE OF SHOULDER.

MODEL: Typical Section - 1 (Sheet)  
 FILE NAME: P:\projects\2021\2021RS-6\DOT\Office\District 3\ORD Project\038\MS\CADD\038\MS\Typical Section

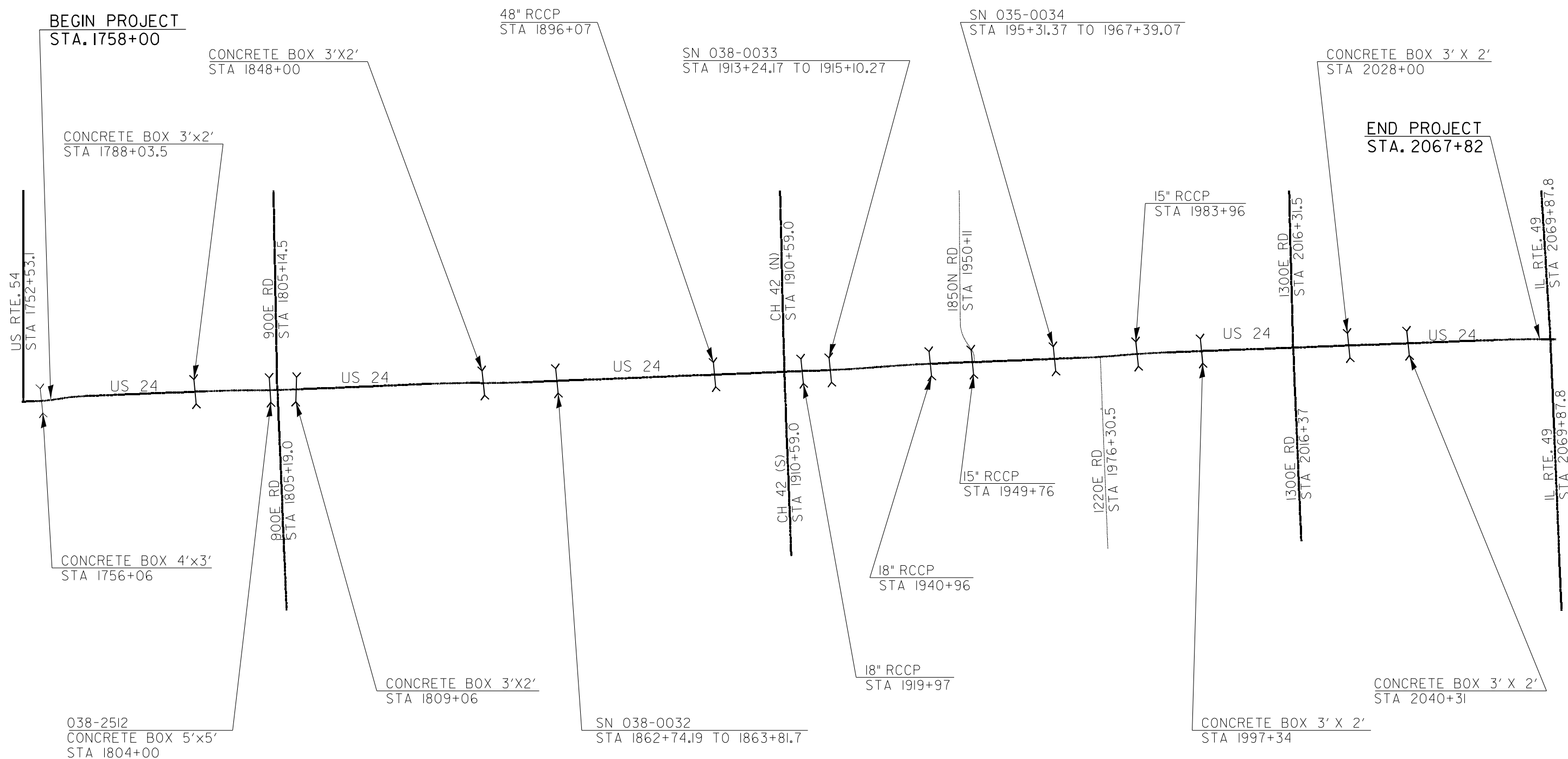
USER NAME = timothy.zletsch	DESIGNED -	REVISED -
	DRAWN -	REVISED -
PLOT SCALE = 0.16666633' / in.	CHECKED -	REVISED -
PLOT DATE = 5/11/2023	DATE -	REVISED -

**STATE OF ILLINOIS  
 DEPARTMENT OF TRANSPORTATION**

TYPICAL SECTIONS

SCALE: SHEET 2 OF 2 SHEETS STA. \_\_\_+\_\_\_ TO STA. \_\_\_+\_\_\_

F.A.P. RTE.	SECTION	COUNTY	TOTAL SHEETS	SHEET NO.
317	[20,21]RS-6	IROQUOIS	22	9
CONTRACT NO. 66M89				
ILLINOIS FED. AID PROJECT				



MODEL: Project Map (Sheet)  
FILE NAME: P:\PROJECTS\2021\05\20210501\DOT\Office\District 3\ORD Projects\038M89\CAD\038M89A-Project Map

USER NAME =	timothy.zletzch
DESIGNED -	
DRAWN -	
PLOT SCALE =	0.16666833' / in.
CHECKED -	
DATE =	5/11/2023
REVISER -	
REVISED -	
REVISER -	
REVISED -	

**STATE OF ILLINOIS  
DEPARTMENT OF TRANSPORTATION**

**LINE DIAGRAM**

SCALE: SHEET OF SHEETS STA. \_\_+\_\_ TO STA. \_\_+\_\_

F.A.P. RTE.	SECTION	COUNTY	TOTAL SHEETS	SHEET NO.
317	[20,21]RS-6	IROQUOIS	22	10
CONTRACT NO. 66M89				
ILLINOIS FED. AID PROJECT				

**PERMANENT SURVEY MARKER SCHEDULE**

CONTRACT NO.  
66M89

LOCATION: 0.1 MI E OF US 45 (N) TO IL 49 IN CRESCENT CITY

IROQUOIS COUNTY

MONUMENT NUMBER	DESCRIPTION	APPROXIMATE LOCATION	EXISTING MONUMENT TYPE	PROPOSED MONUMENT TYPE	MONUMENT RECORD TO BE RECORDED	RESPONSIBILITY
PT17594245	PT STA 1759+42.45		BURIED PLAQUE	SURVEY NAIL OVER RECOVERED PLAQUE		2
PC17604631	PC STA 1760+46.31		BURIED PLAQUE	SURVEY NAIL OVER RECOVERED PLAQUE		2
PT17654577	PT STA 1765+45.77		BURIED PLAQUE	SURVEY NAIL OVER RECOVERED PLAQUE		2
PC17899887	PC STA 1789+98.87		BURIED PLAQUE	SURVEY NAIL OVER RECOVERED PLAQUE		2
PRC17999876	PRS STA 1799+98.76		BURIED PLAQUE	SURVEY NAIL OVER RECOVERED PLAQUE		2
024002	SE CORNER SECTION 32, T27N, R14W, 2ND PM	900 E RD, N SIDE OF INTERSECTION	BURIED PLAQUE	TYPE 1 IF IN CONSTRUCTION LIMITS		1
024003	NE CORNER SECTION 5, T 26N, R14W, 2ND PM	900 E RD, N SIDE OF INTERSECTION	BURIED PLAQUE	TYPE 1 IF IN CONSTRUCTION LIMITS		1
PT18099864	PT STA 1809+98.64		BURIED PLAQUE	SURVEY NAIL OVER RECOVERED PLAQUE		2
PC18371301	PC STA 1837+13.01		BURIED PLAQUE	SURVEY NAIL OVER RECOVERED PLAQUE		2
PT18454596	PT STA 1845+45.96		BURIED PLAQUE	SURVEY NAIL OVER RECOVERED PLAQUE		2
PC18479721	PC STA 1847+97.21		BURIED PLAQUE	SURVEY NAIL OVER RECOVERED PLAQUE		2
PT18559828	PT STA 1855+98.28		BURIED PLAQUE	SURVEY NAIL OVER RECOVERED PLAQUE		2
PC19196344	PC STA 1919+63.44		BURIED PLAQUE	SURVEY NAIL OVER RECOVERED PLAQUE		2
PT19289097	PT STA 1928+90.97		BURIED PLAQUE	SURVEY NAIL OVER RECOVERED PLAQUE		2
PC19320350	PC STA 1932+03.50		BURIED PLAQUE	SURVEY NAIL OVER RECOVERED PLAQUE		2
PT19413768	PT STA 1941+37.68		BURIED PLAQUE	SURVEY NAIL OVER RECOVERED PLAQUE		2
PC19720022	PC STA 1972+00.22		BURIED PLAQUE	SURVEY NAIL OVER RECOVERED PLAQUE		2
PT19801809	PT STA 1980+18.09		BURIED PLAQUE	SURVEY NAIL OVER RECOVERED PLAQUE		2
PC19817716	PC STA 1981+77.16		BURIED PLAQUE	SURVEY NAIL OVER RECOVERED PLAQUE		2
PT19902914	PT STA 1990+29.14		BURIED PLAQUE	SURVEY NAIL OVER RECOVERED PLAQUE		2
EQU19910000	STA EQU 1991+00.00 BK = STA 1990+88.31 AH		BURIED PLAQUE	SURVEY NAIL OVER RECOVERED PLAQUE		2
PC20580000	PC STA 2058+00.00		BURIED PLAQUE	SURVEY NAIL OVER RECOVERED PLAQUE		2
PT20679986	PT STA 2067+99.86		BRASS PLAQUE	SURVEY NAIL IN PLACE OF BRASS PLAQUE		2

ONLY THE ORIGINAL SCOPE OF THIS JOB HAS BEEN SEARCHED FOR MONUMENTS. R.E. MUST INFORM PLATS AND PLANS TO SEARCH FOR ADDITIONAL MONUMENTS PRIOR TO MILLING IF ADDENDUMS HAVE BEEN ADDED TO THIS JOB.  
 UNKNOWN MONUMENTS SET BY OTHERS MAY EXIST. IF AN UNLISTED MONUMENT IS FOUND, R.E. IS REQUIRED TO PROTECT THE MONUMENT FROM DAMAGE UNTIL A PLATS AND PLANS LAND SURVEYOR CAN DOCUMENT THE MONUMENT. PLATS AND PLANS WILL RESET SUCH MONUMENTS IN KIND FOLLOWING CONSTRUCTION.

UPON PAVING COMPLETION, R.E. WILL DIRECT PLATS AND PLANS TO SET THE LISTED MONUMENTS, AND ALSO STAKE THE 2 LOCATIONS FOR TYPE 1 CORING IF IN CONSTRUCTION LIMITS.  
 NOTE: FOR BIDDING PURPOSES NO CONTRACTED LAND SURVEYING SERVICES WILL BE REQUIRED.  
 PLATS AND PLANS WILL FILE ANY REQUIRED MONUMENT RECORDS.

**RESPONSIBILITY:**

- 1) RESIDENT TO RE-ESTABLISH MONUMENT (PAY ITEM REQUIRED. PERMANENT SURVEY MARKER, TYPE 1)
- 2) PLATS AND PLANS TO RE-ESTABLISH MONUMENT

20055400

**SHOULDER RUMBLE STRIPES SCHEDULE**

LOCATION		OFFSET	LENGTH	SHOULDER RUMBLE STRIPES (8")*	
STA	TO	STA	FOOT	FOOT	
US 24-LEFT					
1758+00	TO	1804+43	LEFT	4643	4643
SIDEROAD OMISSION					
1805+77	TO	1820+29	LEFT	1452	1452
1820+81		1862+61	LEFT	4180	4180
STRUCTURE OMISSION					
1864+26	TO	1910+00	LEFT	4574	4574
SIDEROAD OMISSION					
1911+21	TO	1912+24	LEFT	103	103
STRUCTURE OMISSION					
1916+07	TO	1949+75	LEFT	3368	3368
1950+53	TO	1964+92	LEFT	1439	1439
STRUCTURE OMISSION					
1967+78	TO	1975+67	LEFT	789	789
1976+61	TO	1991+00(BK)	LEFT	1439	1439
1990+88(AH)	TO	2015+78	LEFT	2490	2490
SIDEROAD OMISSION					
2016+90	TO	2067+81	LEFT	5091	5091
US 24-RIGHT					
1758+00	TO	1804+58	RIGHT	4658	4658
SIDEROAD OMISSION					
1805+80	TO	1820+18	RIGHT	1438	1438
1820+60	TO	1862+31	RIGHT	4171	4171
STRUCTURE OMISSION					
1863+96	TO	1901+68	RIGHT	3772	3772
1902+14	TO	1905+71	RIGHT	357	357
1906+33	TO	1909+92	RIGHT	359	359
SIDEROAD OMISSION					
1911+13	TO	1912+24	RIGHT	111	111
STRUCTURE OMISSION					
1916+07	TO	1936+80	RIGHT	2073	2073
1937+36	TO	1949+82	RIGHT	1246	1246
1950+68	TO	1964+92	RIGHT	1424	1424
STRUCTURE OMISSION					
1967+78	TO	1975+69	RIGHT	791	791
SIDEROAD OMISSION					
1977+00	TO	1991+00(BK)	RIGHT	1400	1400
1990+88(AH)	TO	2002+74	RIGHT	1186	1186
2003+34	TO	2015+76	RIGHT	1242	1242
SIDEROAD OMISSION					
2016+93	TO	2033+16	RIGHT	1623	1623
2035+04	TO	2067+81	RIGHT	3277	3277
<b>TOTALS</b>				<b>58696</b>	<b>58696</b>

\*REFER TO SPECIAL PROVISION AND DETAILS FOR APPLICATION

MODEL: SCHEDULES Sheet 01 (Sheet)  
FILE NAME: P:\GIS\Projects\DOT\Documents\DOT Office\Direct\3090 Project\0366M89\CD\0366M89 Schedule

USER NAME = timothy.zletsch	DESIGNED -	REVISED -
PLOT SCALE = 0.16666833 / in.	DRAWN -	REVISED -
PLOT DATE = 5/11/2023	CHECKED -	REVISED -
	DATE -	REVISED -

**STATE OF ILLINOIS  
DEPARTMENT OF TRANSPORTATION**

**SCHEDULES**

SCALE: SHEET 1 OF 5 SHEETS STA. \_\_\_+\_\_\_ TO STA. \_\_\_+\_\_\_

F.A.P. RTE.	SECTION	COUNTY	TOTAL SHEETS	SHEET NO.
317	[20,21]RS-6	IROQUOIS	22	11
CONTRACT NO. 66M89				
ILLINOIS FED. AID PROJECT				

### CLASS D PATCHING

LOCATION	PATCH NUMBER	SIDE	PATCH LENGTH	PATCH WIDTH	CLASS D TYPE 11, 16 INCH
STATION			FOOT	FOOT	SQ YD
1775+20	1	RT	6	15	10
1836+92	2	RT	6	15	10
1843+99	3	RT	6	15	10
1846+99	4	RT	6	15	10
1583+97	5	RT	6	15	10
1855+98	6	RT	6	15	10
1872+95	7	RT	6	15	10
1881+95	8	RT	6	15	10
1888+95	9	RT	6	15	10
1896+96	10	RT	6	15	10
1899+95	11	RT	6	15	10
1901+96	12	RT	6	15	10
1903+93	13	RT	6	15	10
1920+95	14	RT	6	15	10
1921+94	15	RT	6	15	10
1934+13	16	RT	6	15	10
1934+94	17	RT	6	15	10
1938+69	18	RT	6	15	10
1938+95	19	RT	6	15	10
1951+93	20	RT	6	15	10
1963+85	21	RT	6	15	10
1974+94	22	RT	6	15	10
1979+94	23	RT	6	15	10
1985+92	24	RT	6	15	10
1991+95	25	RT	6	15	10
<b>TOTALS</b>					<b>250</b>

### CLASS D PATCHING

LOCATION	PATCH NUMBER	SIDE	PATCH LENGTH	PATCH WIDTH	CLASS D TYPE 11, 16 INCH
STATION			FOOT	FOOT	SQ YD
2022+90	1	LT	6	15	10
1991+97	2	LT	6	15	10
1985+96	3	LT	6	15	10
1989+76	4	LT	6	15	10
1947+98	5	LT	6	15	10
1969+50	6	LT	6	15	10
1969+30	7	LI	6	15	10
1956+98	8	LT	6	15	10
1955+99	9	LT	6	15	10
1951+99	10	LT	6	15	10
1938+99	11	LT	6	15	10
1935+00	12	LT	6	15	10
1921+97	13	LT	6	15	10
1920+98	14	LT	6	15	10
1910+78	15	LT	6	15	10
1903+05	16	LT	6	15	10
1900+00	17	LT	6	15	10
1889+01	18	LT	6	15	10
1875+00	19	LT	6	15	10
1856+02	20	LT	6	15	10
1847+00	21	LT	6	15	10
1844+02	22	LT	6	15	10
18389+03	23	LT	6	15	10
1836+95	24	LT	6	15	10
<b>TOTALS</b>					<b>240</b>

### PAVEMENT CONNECTOR

LOCATION	PAVEMENT REMOVAL		PVMT CONNECTOR FLEXIBLE	
	STA TO STA	SQ YD	SQ YD	
SN 038-0032				
1862+38 TO 1862+45		83		83
1864+11 TO 1864+17		81		81
<b>TOTALS</b>		<b>164</b>		<b>164</b>

\*REMOVAL OF THE EXISTING CONNECTOR SHALL NOT DAMAGE THE EXISTING CONCRETE PAD CONNECTING THE APPROACH PAVEMENT AND PAVEMENT CONNECTOR.

### SHOULDER SCHEDULE

LOCATION	OFFSET	LENGTH	WIDTH	HMA SURF REM	BIT MAT TACK	HMA SHOULDERS	
STA TO STA				1 1/2" COAT	LB	TON	
SN 038-0032							
1861+33 TO 1862+68		LEFT	135	5	75	34	6
1864+33 TO 1865+99		LEFT	166	5	92	42	8
1860+33 TO 1862+28		RIGHT	195	5	108	49	9
1863+92 TO 1865+36		RIGHT	144	5	80	36	7
SN 038-0033							
1911+22 TO 1912+24		LEFT	102	5	57	26	5
1912+24 TO 1912+56		LEFT	32	8	28	13	2
1915+02 TO 1916+08		LEFT	106	8	94	42	8
1916+08 TO 1916+80		LEFT	72	5	40	18	3
1911+00 TO 1912+24		RIGHT	124	5	69	31	6
1912+24 TO 1913+33		RIGHT	109	8	97	44	8
1915+82 TO 1916+08		RIGHT	26	8	23	10	2
1916+08 TO 1917+15		RIGHT	107	5	59	27	5
SN 038-0034							
1963+74 TO 1964+90		LEFT	116	8	103	46	9
1964+90 TO 1965+01		LEFT	11	5	6	3	1
1967+67 TO 1967+77		LEFT	10	5	6	3	
1967+77 TO 1969+43		LEFT	166	8	148	66	12
1963+30 TO 1964+90		RIGHT	160	8	142	64	12
1964+90 TO 1965+01		RIGHT	11	5	6	3	1
1967+67 TO 1967+77		RIGHT	10	5	6	3	
1967+77 TO 1968+93		RIGHT	116	8	103	46	9
<b>TOTALS</b>			<b>1918</b>		<b>1342</b>	<b>606</b>	<b>112</b>

### MAINLINE SCHEDULE

LOCATION	LENGTH	WIDTH	HMA SURF REM	BIT MAT (TACK COAT)	LONG JOINT SEAL	MIX CR, JT, & FLGWY	HMA SURF CSE MIX C	MATERIAL TRANSFER DEVICE	AGG WEDGE SHLDS	TEMP RAMP	
STA TO STA			FOOT	FOOT	SQ YD	LB	FOOT	TON	TON	TON	TON
US 24											
1758+00 TO 1862+46	10445.58	30	34819	15668	10445.58	10.45	2925	2925	297	34	
1862+46 TO 1864+11	165.57		SN 038-0032 BRIDGE OMISSION C.L. STA. 1863+27.94								
1864+11 TO 1912+24	4812.39	30	16041	7219	4812.39	4.81	1347	1347	137	34	
1912+24 TO 1916+07	383.45		SN 038-0033 BRIDGE OMISSION C.L. STA. 1914+17.22								
1916+07 TO 1964+92	4885.01	30	16293	7328	4885.01	4.89	1368	1368	139	34	
1964+92 TO 1967+78	285.93		SN 038-0034 BRIDGE OMISSION C.L. STA. 1966+35.22								
1967+78 TO 1991+00(BK)	2322.07	30	7740	3483	2322.07	2.32	650	650	66	34	
1990+88(AH) TO 2067+82	7693.69	30	25646	11541	7693.69	7.69	2154	2154	219	34	
<b>TOTALS</b>	<b>30994</b>		<b>100529</b>	<b>45239</b>	<b>30159</b>	<b>30</b>	<b>8444</b>	<b>8444</b>	<b>859</b>	<b>170</b>	

**STATE OF ILLINOIS  
DEPARTMENT OF TRANSPORTATION**

SCHEDULES

SCALE: SHEET 2 OF 5 SHEETS STA. \_\_\_+\_\_\_ TO STA. \_\_\_+\_\_\_

F.A.P. RTE.	SECTION	COUNTY	TOTAL SHEETS	SHEET NO.
317	[20,21]RS-6	IROQUOIS	22	12
CONTRACT NO. 66M89				

ILLINOIS FED. AID PROJECT

MODEL: SCHEDULES Sheet 02 (Sheet) FILE NAME: P:\misco\66M89\m89\DOT\Office\Direct\3066\Project\66M89\CADD\66M89\_Schedule



## DRAINAGE SCHEDULE

STA	STRUCTURE TYPE	PIPE DRAIN REMOVAL	PIPE DRAIN 12 INCH	END SECTION 12 INCH	CONTROLLED LOW-STRENGTH MATERIAL	PLUG WEEP HOLES *	SEAL JOINTS *	RIPRAP CLASS A4	FILTER FABRIC	STONE DUMPED RIPRAP CLASS A1	BOX CULVERT TO BE CLEANED	PIPE CULVERT TO BE CLEANED	COMMENTS
		FOOT	FOOT	EACH	CU YD	EACH		SQ YD	SQ YD	SQ YD	FOOT	FOOT	
1788+04	3'X2' BOX WITH 3'X2' PRECAST EXT & PRECAST END SECTIONS						1	4	4				PLACE 6'X6' RR4 APRON AND SEAL END SECTION JOINT WITH MASTIC.
1809+06	3'X2' BOX WITH 3'X2' PRECAST EXT & PRECAST END SECTIONS					2	1						NORTH EXTENSION JOINT SEALED WITH MASTIC AND WEEPHOLES PLUGGED
1863+28	100' 3 SPAN W 24 STEEL BEAM 51° SKEW	10	10	1									REMOVE AND REPLACE 10' OF DAMAGED 12" PIPE DRAIN IN THE NE QUADRANT AND INSTALL END SECTION.
1896+07	48" RCCP WITH 48" PRC FES							4	4				PLACE RIPRAP AT NORTH END OF CULVERT
1940+96	18" RCCP WITH 18" RCCP EXT & 18" PRC FES											60	CLEAN FULL LENGTH OF CULVERT
1949+76	15" RCCP											70	CLEAN FULL LENGTH OF CULVERT
1966+35	202' 4 SPAN W 30 STEEL BEAM 0° SKEW				10					20			STONE DUMPED RIPRAP CLASS A1 IN EACH CORNER ALONG THE APPROACH SLAB FROM PARAPET TERMINAL TO 12' OUT FLOWABLE FILL UNDER THE FAILED EAST SIDE SLOPEWALL SLAB
1983+96	15" RCCP												REMOVE 15" RCCP AND REPLACE WITH 18" RCCP AND PRC FES. SEE CULVERT REPLACEMENT SCHEDULE
1997+34	3'X2' RC BOX WITH 3'X2' PRECAST EXT & PRECAST END SECTIONS					4					70		CLEAN FULL LENGTH OF CULVERT
2028+00	3'X2' RC BOX WITH CMP ARCH EXT'S					4					62		CLEAN FULL LENGTH OF CULVERT
<b>TOTAL</b>		<b>10</b>	<b>10</b>	<b>1</b>	<b>10</b>	<b>10</b>	<b>2</b>	<b>8</b>	<b>8</b>	<b>20</b>	<b>132</b>	<b>138</b>	

\* PLUG WEEP HOLES AND SEAL JOINTS WILL BE PAID FOR AS MASTIC REPAIR FOR CULVERTS

MODEL: SCHEDULES Sheet 03 (Sheet)  
FILE NAME: p:\bisc\p1000\p1000.dwg  
PROJECT: I-30RB Project  
CADD: D:\Users\j0666833\Documents\DOT Office\District 3\30RB Project\p1000.dwg  
SCHEDULE: Schedule

USER NAME = jtimothy@letech	DESIGNED -	REVISED -
PLOT SCALE = 0.16666633' / in.	DRAWN -	REVISED -
PLOT DATE = 5/11/2023	CHECKED -	REVISED -
	DATE -	REVISED -

**STATE OF ILLINOIS  
DEPARTMENT OF TRANSPORTATION**

SCHEDULES

SCALE: SHEET 3 OF 5 SHEETS STA. \_\_\_+\_\_\_ TO STA. \_\_\_+\_\_\_

F.A.P. RTE.	SECTION	COUNTY	TOTAL SHEETS	SHEET NO.
317	[20,21]RS-6	IROQUOIS	22	13
CONTRACT NO. 66M89				
ILLINOIS FED. AID PROJECT				

CULVERT REPLACEMENT SCHEDULE								
LOCATION	PIPE CULVERT REMOVAL	PIPE CULVERTS CL A, TY 2 18"	REMOVE CONC END SECTION	PRECAST REINFORCED CONC FES 18 INCH	TRENCH BACKFILL	SAW CUTS	CL D PATCH TY 2 16 INCH	
	STA	FOOT	FOOT	EACH	EACH	CU YD	FOOT	SQ YD
CULVERT #2697	1983+96	62	62	2	2	34.0	95	17
<b>TOTAL</b>		<b>62</b>	<b>62</b>	<b>2</b>	<b>2</b>	<b>34</b>	<b>95</b>	<b>17</b>

DELINEATORS SCHEDULE					
CULV OR STR#	STA	STRUCTURE	DELINEATORS	GUARDRAIL REFLECTORS TY A	4 INCH LINEAR DELINEATORS*
			EACH	EACH	EACH
#263	1788+04	3'X2' RC BOX	2		
038-2512	1804+00	5'X5' CIP BOX	2		
#2695	1809+06	3'X2' BOX	2		
#696	1848+00	3'X2' RC BOX	2		
038-0032	1863+30	BRIDGE		8	10
#425	1896+07	48" RCCP	2		
038-0033	1914+20	BRIDGE		8	10
#2696	1919+97	18" RCCP	2		
#261	1940+96	18" RCCP	2		
#5076	1949+76	15" RCCP	2		
038-0034	1966+40	BRIDGE		8	10
#2697	1983+96	15" RCCP	2		
#424	1997+34	3'X2' RC BOX	2		
#260	2028+00	3'X2' RC BOX	2		
	2034+54	8" CMP	2		
#259	2040+31	3'X2' RC BOX	2		
<b>TOTAL</b>			<b>26</b>	<b>24</b>	<b>30</b>

\*4 INCH LINEAR DELINEATORS ARE TO BE USED ON THE GUARDRAIL AT THE LOCATION.

GRADING & SHAPING DITCHES												
LOCATION	SIDE LT/RT	LENGTH	GRADING & SHAPING DITCHES	AREA	EARTH EX	EROSION CONTROL BLANKET	SEED CL 2A	FERTILIZER			DIRECTION OF FLOW	
			FOOT	SQ FT	CU YD	SQ YD	ACRE	NITRO LB	PHOS LB	POT LB		
1906+50	1910+00	RT	350	350	3,500	43	389	0.080	7.2	7.2	7.2	EAST
1911+50	1913+00	RT	150	150	1,500	18	167	0.034	3.1	3.1	3.1	EAST
1941+00	1944+50	RT	350	350	3,500	43	389	0.080	7.2	7.2	7.2	EAST
1949+50	1950+00	RT	50	50	500	6	56	0.011	1.0	1.0	1.0	EAST
1979+00	1987+00	RT	800	800	8,000	98	889	0.184	16.5	16.5	16.5	WEST
1997+50	1999+50	LT	200	200	2,000	24	222	0.046	4.1	4.1	4.1	EAST
<b>TOTAL</b>			<b>1900</b>	<b>1900</b>	<b>19000</b>	<b>232</b>	<b>2111</b>	<b>0.4</b>	<b>39</b>	<b>39</b>	<b>39</b>	

SIDEROAD SCHEDULE														
STATION	SIDE	DESCRIPTION	MATERIAL	AREA	AREA	HMA SURF REM 1 1/2"	BIT MAT TACK COAT	INCIDENTAL HMA SURFACING	FURNISHED EXCAVATION	*SEED CL 2A	*NITROGEN FERTILIZER NUTRIENT	*PHOSPORUS FERTILIZER NUTRIENT	*POTASSIUM FERTILIZER NUTRIENT	*EROSION CONTROL BLANKET
				SQ FT	SQ YD	SQ YD	LB	TON	CU YD	ACRE	LB	LB	LB	SQ YD
1805+14.5	LEFT	900E RD	HMA	2015.018	224	224	101	19	7	0.01	1	1	1	39
1805+19.0	RIGHT	900E RD	HMA	2104	234	234	105	20	7	0.01	1	1	1	44
1910+59.0	LEFT	CH 42 (N)	HMA	2672	297	297	134	25	8	0.01	1	1	1	46
1910+59.0	RIGHT	CH 42 (S)	HMA	2109	234	234	105	20	8	0.01	1	1	1	45
1976+30.5	RIGHT	1220E RD	HMA	2245	249	249	112	21	9	0.01	1	1	1	55
2016+31.5	LEFT	1300E RD	HMA	1883	209	209	94	18	7	0.01	1	1	1	44
2016+37.0	RIGHT	1300E RD	HMA	2038	226	226	102	19	9	0.01	1	1	1	53
<b>TOTALS</b>					<b>1674</b>	<b>1674</b>	<b>753</b>	<b>141</b>	<b>54</b>	<b>0.07</b>	<b>6</b>	<b>6</b>	<b>6</b>	<b>326</b>

\*QUANTITIES INCLUDED IN COST OF FURNISHED EXCAVATION.

MODEL: SCHEDULES Sheet 4 (Sheet)  
FILE NAME: P:\Bids\2021\2021-07\DOT\Documents\DOT Office\Direct\3-0-REG Proj\2021\03658183\CADD\03658189 Schedule

USER NAME = timothy.zietech	DESIGNED -	REVISED -
PLOT SCALE = 0.16666833"/in.	DRAWN -	REVISED -
PLOT DATE = 5/11/2023	CHECKED -	REVISED -
	DATE -	REVISED -

STATE OF ILLINOIS  
DEPARTMENT OF TRANSPORTATION

SCHEDULES

SCALE: SHEET 4 OF 5 SHEETS STA. \_\_\_+\_\_\_ TO STA. \_\_\_+\_\_\_

F.A.P. RTE.	SECTION	COUNTY	TOTAL SHEETS	SHEET NO.
317	[20,21]RS-6	IROQUOIS	22	14
CONTRACT NO. 66M89				
ILLINOIS FED. AID PROJECT				

## ENTRANCE SCHEDULE

STA	SIDE (LT OR RT)	DESCRIPTION	MATERIAL	AREA SQ FT	HMA SURFACE REMOVAL 1 1/2"	BIT MAT TACK COAT	INCIDENTAL HMA SURFACING	AGG SURFACE COURSE TYPE B	FURNISHED EXCAVATION	*SEED CL 2A	*NITROGEN FERTILIZER NUTRIENT	*PHOSPORUS FERTILIZER NUTRIENT	*POTASSIUM FERTILIZER NUTRIENT	*EROSION CONTROL BLANKET
					SQ YD	LB	TON	TON	CU YD	ACRE	POUND	POUND	POUND	SQ YD
1771+74	RT	FE	AGG	307.44				4						
1820+37	RT	PE	HMA	218.8	24	11	2	2	1	0.003	0.2	0.2	0.2	13
1820+42	LT	MBTO	HMA	143	16	7	1	2	1	0.003	0.2	0.2	0.2	13
1824+94	RT	FE	AGG	1155.77				14						
1835+00	RT	FE	AGG	319.73				4						
1844+49	RT	FE	AGG	293.4				4						
1857+95	RT	FE	AGG	419.13				5						
1868+00	RT	FE	AGG	445.73				5						
1871+01	RT	FE	AGG	407.1				5						
1882+32	RT	FE	AGG	217.32				3						
1890+71	RT	FE	AGG	296.27				4						
1901+92	RT	PE	HMA	336.5	37	17	3	2	1	0.003	0.2	0.2	0.2	13
1906+02	RT	PE	HMA	405.36	45	20	4	2	1	0.003	0.2	0.2	0.2	13
1925+95	RT	FE	AGG	294.8				4						
1937+02	RT	PE MBTO	HMA	428.71	48	21	4	2	1	0.003	0.2	0.2	0.2	13
1950+11	LT	PE	HMA	690	77	35	6	2	1	0.003	0.2	0.2	0.2	13
1950+24	RT	PE/MBTO	HMA	568	63	28	5	2	1	0.003	0.2	0.2	0.2	13
1975+95	LT	PE/MBTO	HMA	624	69	31	6	2	1	0.003	0.2	0.2	0.2	13
1989+23	RT	FE	AGG	253.33				3						
2003+14	RT	PE	HMA	302	34	15	3	2	1	0.003	0.2	0.2	0.2	13
2033+38	RT	PE	HMA	325	36	16	3	2	1	0.003	0.2	0.2	0.2	13
2034+84	RT	PE	HMA	326	36	16	3	2	1	0.003	0.2	0.2	0.2	13
2038+20	LT	FE	AGG	166				2						
2042+92	RT	FE	AGG	222				3						
2043+52	RT	FE	AGG	255				3						
<b>TOTALS</b>				<b>9420</b>	<b>485</b>	<b>217</b>	<b>40</b>	<b>85</b>	<b>11</b>	<b>0.03</b>	<b>3</b>	<b>3</b>	<b>3</b>	<b>147</b>

\*QUANTITIES INCLUDED IN COST OF FURNISHED EXCAVATION.

## PAVEMENT MARKING SCHEDULE

LOCATION	COMMENT	LENGTH	MODIFIED URETHANE (2 APPLICATIONS)		RAISED REFLECT PVMT MARK	RAISED REFLECT PVMT MARK
			LINE 4"	LINE 6"		
			WHITE	YELLOW	2 WAY YEL	REMOVAL
<b>STATION</b>		<b>FOOT</b>	<b>FOOT</b>	<b>FOOT</b>	<b>EACH</b>	<b>EACH</b>
1758+00 TO 1991+00	Passing Zone	23300	93200	11650	291	291
1990+88 TO 2067+82	Passing Zone	7694	30776	3847	96	96
<b>TOTAL</b>		<b>30994</b>	<b>123976</b>	<b>15497</b>	<b>387</b>	<b>387</b>

STATION EQUATION: 1991+00 (BK) = 1990+88 (AH)

PAVEMENT MARKING INCLUDES BRIDGE OMISSION

## SHORT TERM PAVEMENT MARKINGS

LOCATION	LENGTH	SHORT TERM PVMT	SHORT TERM PVMT REM
STATION	FOOT	FOOT	SQ FT
1758+00 TO 1991+00 (BK)	23300.00	6990	777
1990+88 (AH) TO 2067+82	7694.00	2308	256
<b>TOTAL</b>		<b>9298</b>	<b>1033</b>

\*THIS QUANTITY IS FOR 3 APPLICATIONS IF NEEDED.

MODEL: SCHEDULES Sheet 06 (Sheet)  
FILE NAME: P:\GIS\Projects\DOT\Office\District 3\ORD Project\0366M89\CADD\0366M89\_Schedule

USER NAME = timothy.zletsch	DESIGNED -	REVISED -
DRAWN -	REVISOR -	
PLOT SCALE = 0.16666833' / in.	CHECKED -	REVISED -
PLOT DATE = 5/11/2023	DATE -	REVISED -

**STATE OF ILLINOIS  
DEPARTMENT OF TRANSPORTATION**

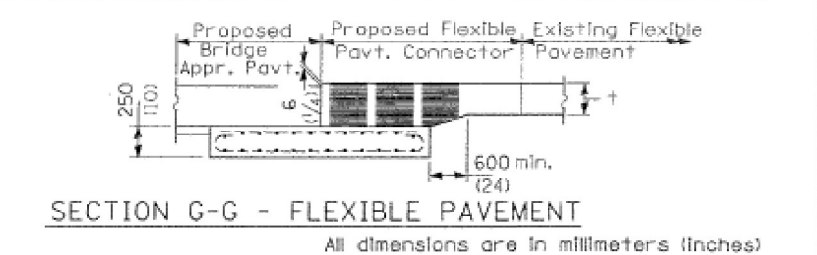
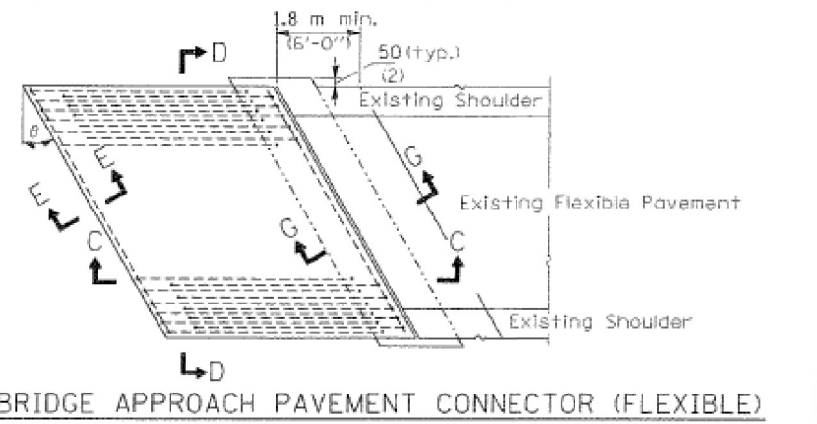
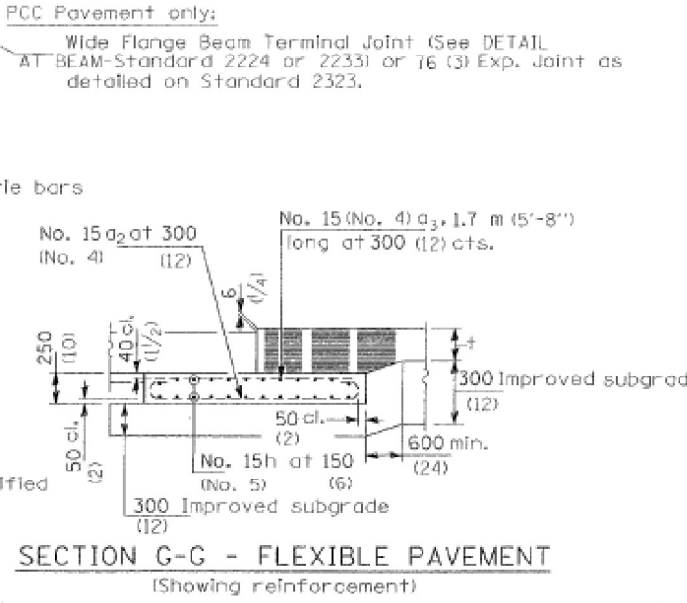
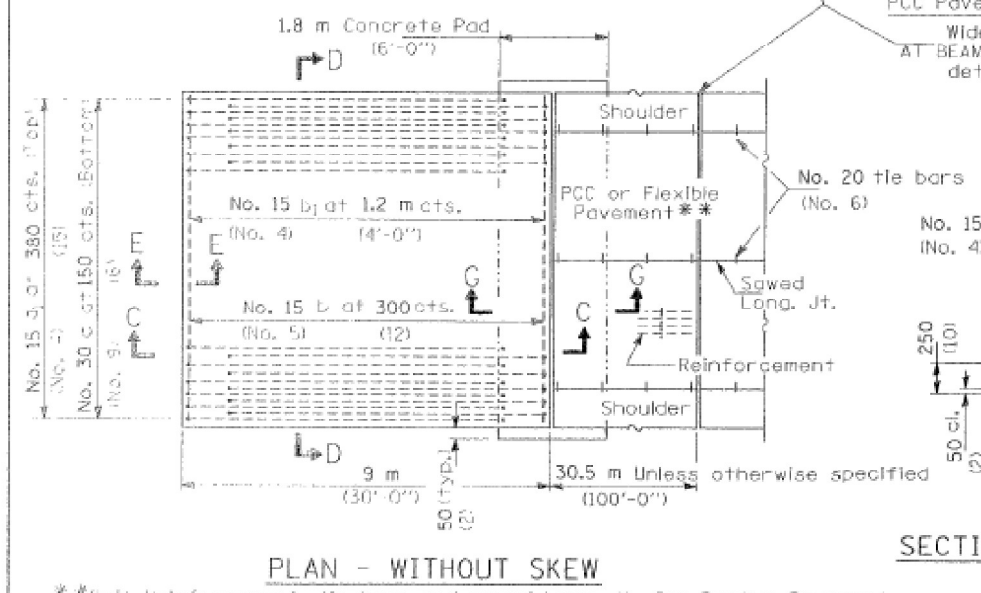
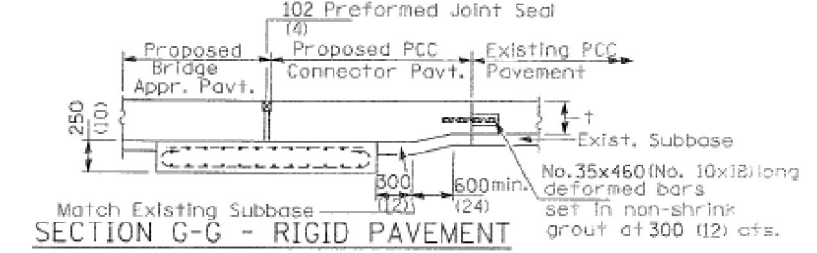
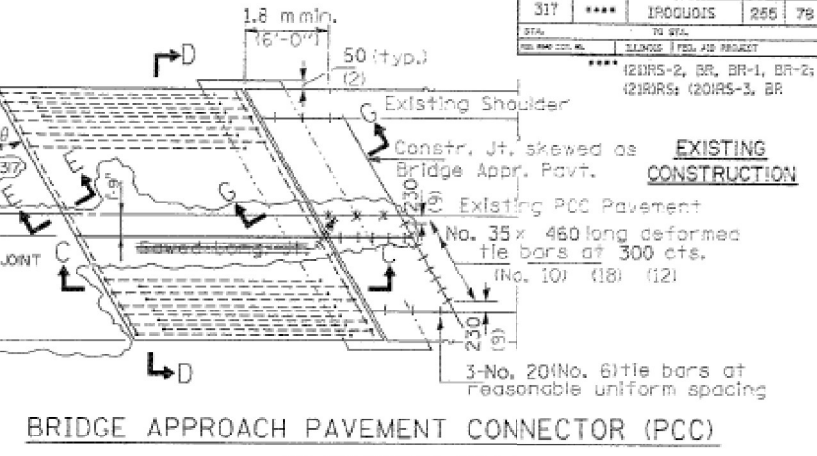
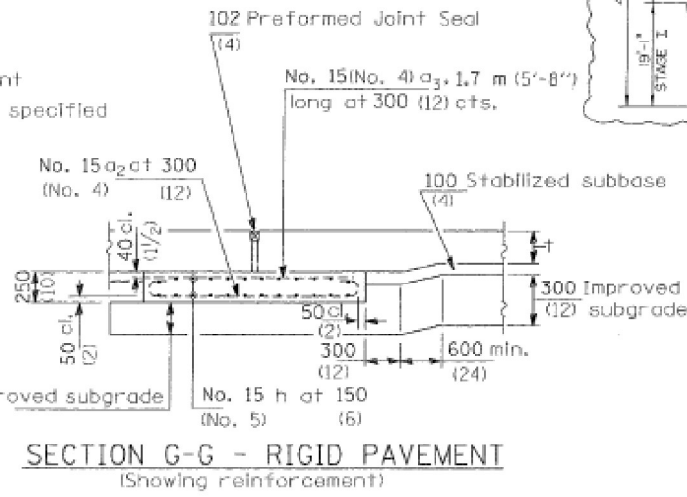
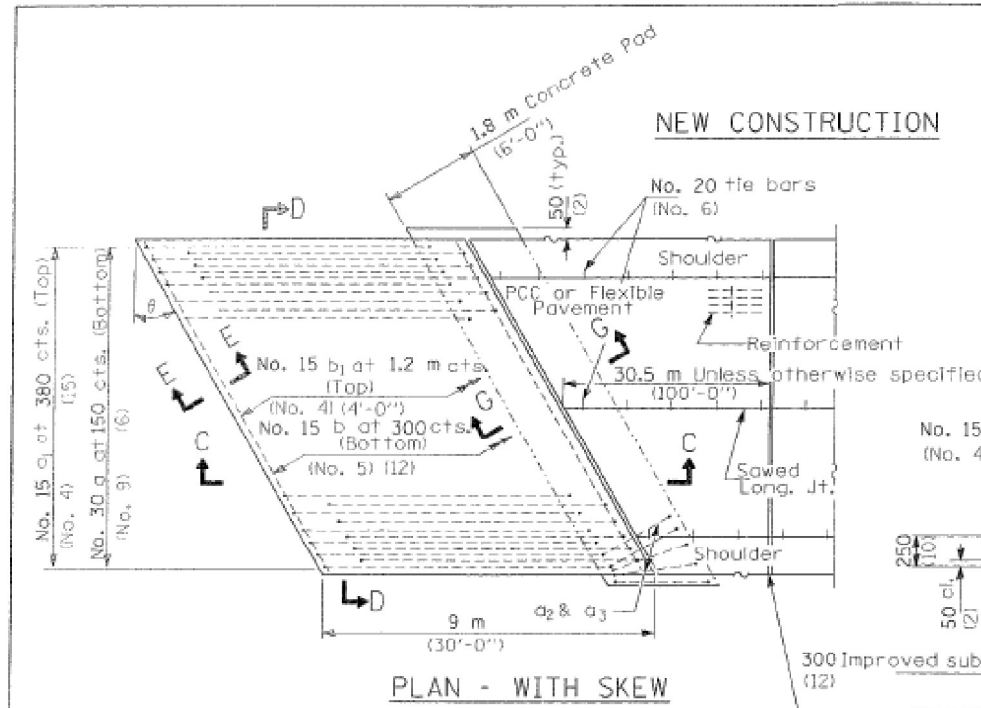
SCHEDULES

SCALE: SHEET 5 OF 5 SHEETS STA. \_\_\_+\_\_\_ TO STA. \_\_\_+\_\_\_

F.A.P. RTE.	SECTION	COUNTY	TOTAL SHEETS	SHEET NO.
317	[20,21]RS-6	IROQUOIS	22	15
CONTRACT NO. 66M89				
ILLINOIS FED. AID PROJECT				

ROUTE	SECTION	COUNTY	TOTAL SHEETS	SHEET NO.
317	****	IROQUOIS	255	78

Note: All Bridge Approach Pavement and Bridge Approach Pavement Connector (PCC) are to be constructed in Stage Construction, construction joints are NOT center of pavement.



PCC Pavement only:  
Wide Flange Beam Terminal Joint (See DETAIL AT BEAM-Standard 2224 or 2233) or 76 (3) Exp. Joint as detailed on Standard 2323.

\*\*Guilt reinforcement, tie bars and sawed Long. Jt. for Flexible Pavement.

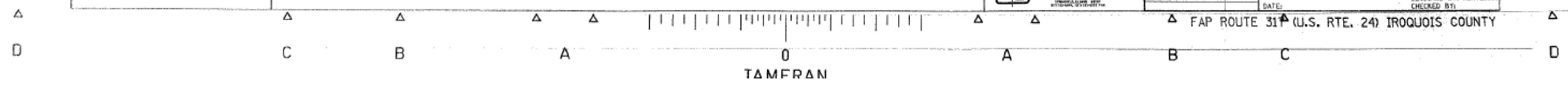
**GENERAL NOTES**  
THICKNESS--"t"=Thickness of Pavement. See Standard 2225 for reinforcement details not shown. See Standard 2323 for details of joints not shown.

**LEGEND**  
INDICATES VARIATIONS FROM STANDARD

All dimensions are in millimeters (inches) unless otherwise shown. (Sheet 1 of 2)

ILLINOIS DEPARTMENT OF TRANSPORTATION  
**BRIDGE APPROACH PAVEMENT**  
STANDARD 2442 SPECIAL  
FAP ROUTE 317 (U.S. RTE. 24)  
SECTION (21RS-2, BR, BR-1, BR-2;  
21R1RS; 20RS-3, BR  
IROQUOIS COUNTY

DRAWN BY: McGRATH  
CHECKED BY:



USER NAME = timothy.pletsch	DESIGNED -	REVISED -
DRAWN -	REVISOR -	
PLOT SCALE = 100,000 / in.	CHECKED -	REVISED -
PLOT DATE = 5/11/2023	DATE -	REVISED -

STATE OF ILLINOIS  
DEPARTMENT OF TRANSPORTATION

APPROACH CONNECTOR DETAILS  
FOR INFORMATION ONLY

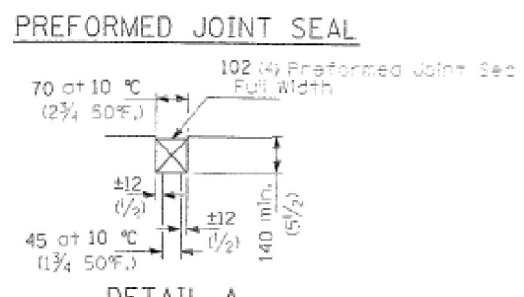
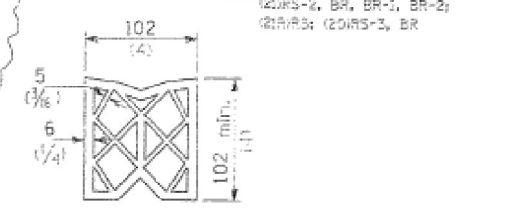
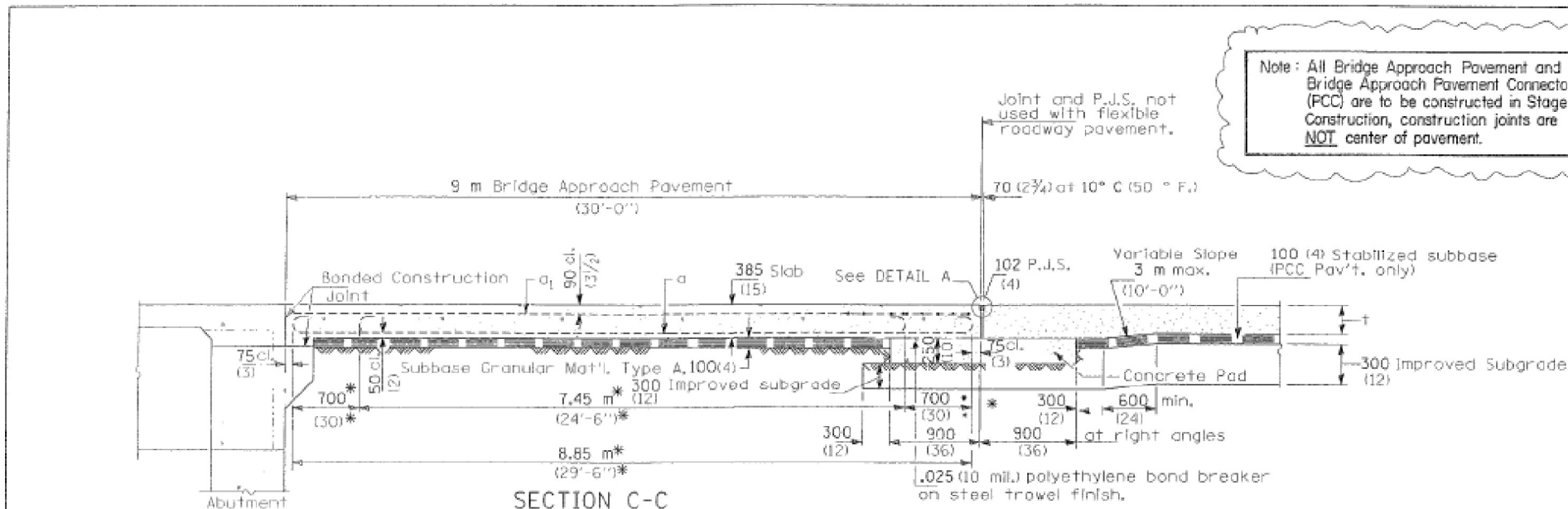
SCALE: \_\_\_\_\_ SHEET \_\_\_\_\_ OF \_\_\_\_\_ SHEETS STA. \_\_\_\_\_ TO STA. \_\_\_\_\_

F.A.P. RTE.	SECTION	COUNTY	TOTAL SHEETS	SHEET NO.
317	(20,21RS-6	IROQUOIS	22	16
				CONTRACT NO. 66M89
				ILLINOIS FED. AID PROJECT

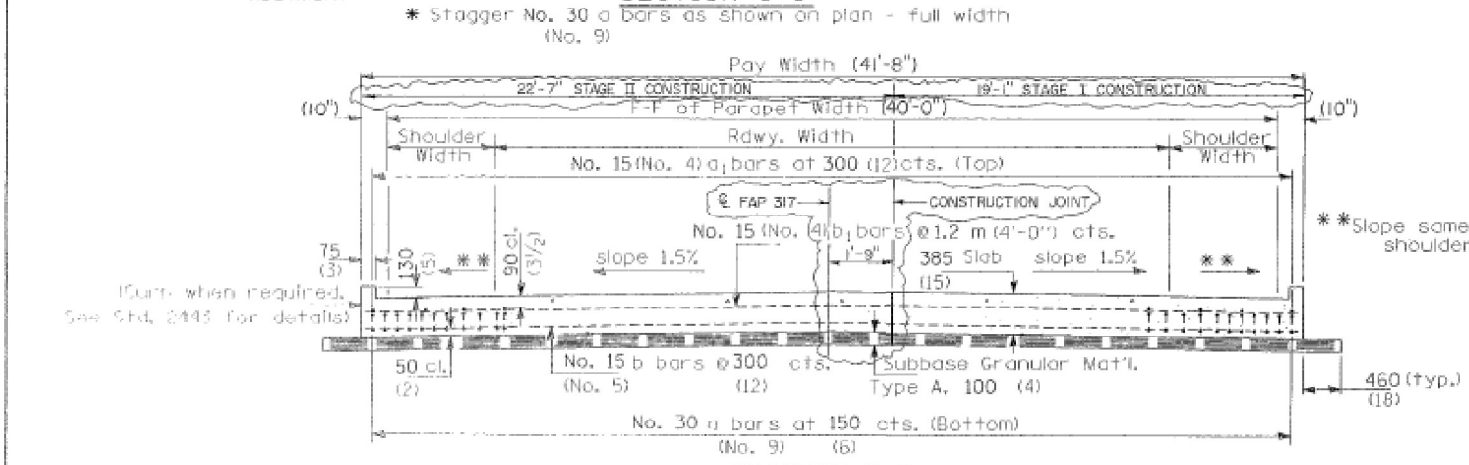
MODEL: Default FILE NAME: p:\illdot\new\beadefy.com\p\illdot\documents\DOT\_0\_csr\Detail\_3080\Project\_0366189\CADD\3080\266189\_DETAILS

ROUTE	SECTION	COUNTY	TOTAL SHEETS	SHEET NO.
317	****	IROQUOIS	255	79
TOTAL TO STA.				
FROM STA. TO STA.				
PROJECT NO. 66M89				

Note: All Bridge Approach Pavement and Bridge Approach Pavement Connector (PCC) are to be constructed in Stage Construction, construction joints are NOT center of pavement.



\* Stagger No. 30 a bars as shown on plan - full width (No. 9)

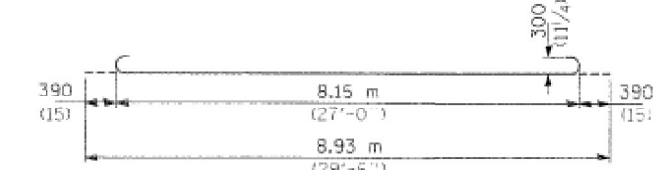


Longitudinal Construction Joint in accordance with details shown on Standard 2323.



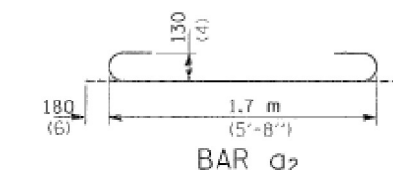
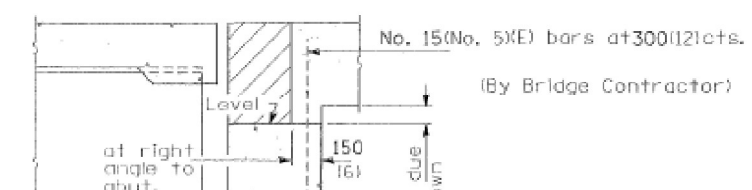
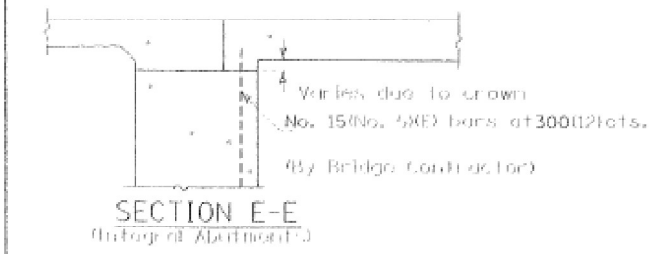
**OPTIONAL LONGITUDINAL CONSTRUCTION JOINT**

As approved by the Engineer, the Contractor may elect to reduce the widths of pour by use of the Optional Longitudinal Construction Joint shown. Joints shall be located at the edge of a traffic lane.



**No. 30 a BARS (No. 9)**

All dimensions are in millimeters (inches) unless otherwise shown. (Sheet 2 of 2)



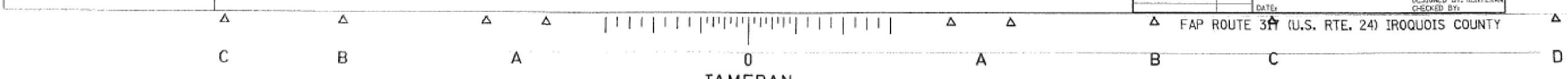
**DESIGN STRESSES**  
 $f_y = 400 \text{ MPa (60,000 p.s.i.)}$   
 $f'_c = 24 \text{ MPa (3,500 p.s.i.)}$   
 $n = 8.5$

LEGEND  
 INDICATES VARIATIONS FROM STANDARD

GREENE & BRADFORD, INC. OF SPRINGFIELD  
 ILLINOIS DEPARTMENT OF TRANSPORTATION  
 BRIDGE APPROACH PAVEMENT  
 STANDARD 2442 SPECIAL  
 FAP ROUTE 317 (U.S. RTE. 24)  
 SECTION (21RS-2, BR, BR-1, BR-2;  
 (21RS-3, (20RS-3, BR  
 IROQUOIS COUNTY  
 SCALE: VERT. 1/4" = 1'-0"  
 HORIZ. 1" = 10'-0"  
 DATE: \_\_\_\_\_  
 DRAWN BY: MCGRATH  
 DESIGNED BY: KLINTZMAN  
 CHECKED BY: \_\_\_\_\_

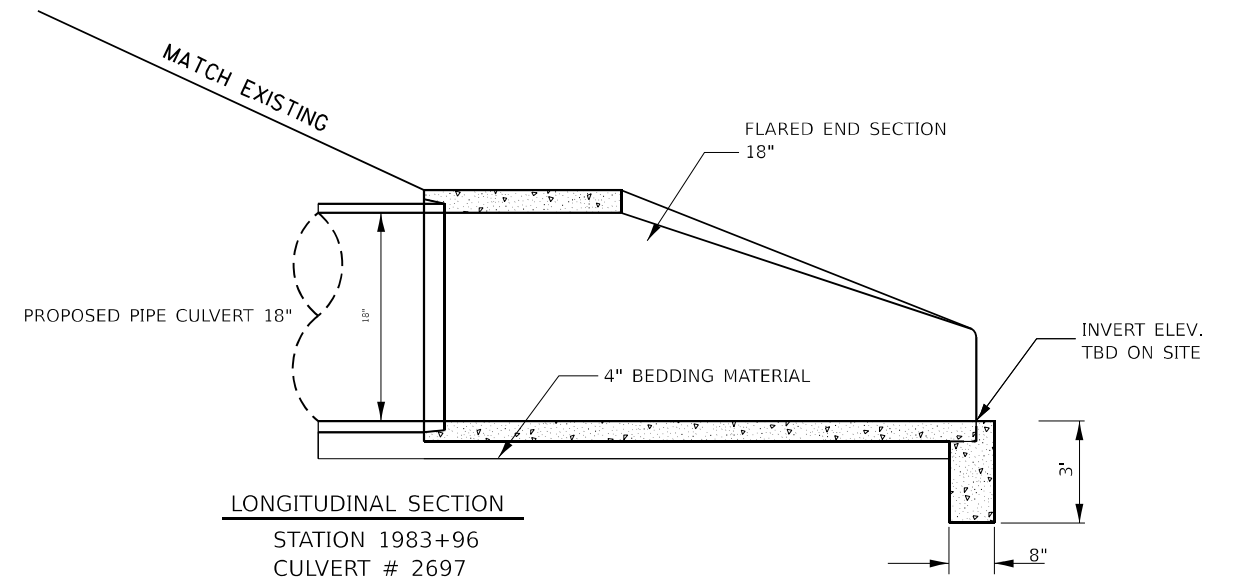
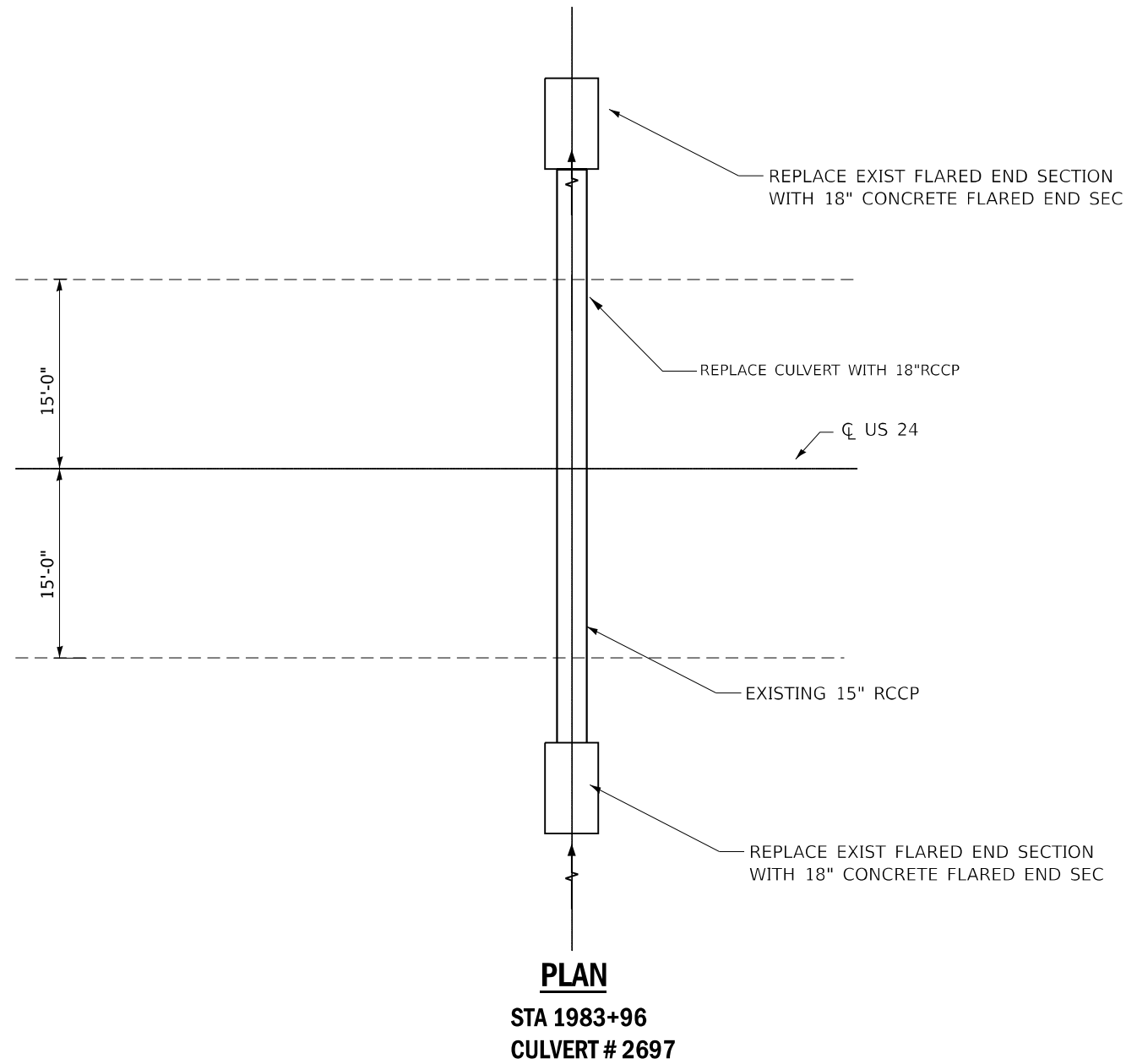
REVISIONS	NAME	DATE
1	REVIEW - KTM	8/3/94

FAP ROUTE 317 (U.S. RTE. 24) IROQUOIS COUNTY



USER NAME = timothy.pletsch	DESIGNED - _____	REVISED - _____	STATE OF ILLINOIS DEPARTMENT OF TRANSPORTATION	APPROACH CONNECTOR DETAILS FOR INFORMATION ONLY	F.A.P. RTE. 317	SECTION (20,21RS-6	COUNTY IROQUOIS	TOTAL SHEETS 22	SHEET NO. 17	
DRAWN - _____	CHECKED - _____	REVISED - _____			SCALE: _____	SHEET _____ OF _____ SHEETS	STA. _____	TO STA. _____	ILLINOIS	FED. AID PROJECT
PLOT SCALE = 100,000 * / in.	DATE - _____	REVISED - _____			CONTRACT NO. 66M89					
PLOT DATE = 5/11/2023	DATE - _____	REVISED - _____								

MODEL: Default  
 FILE NAME: p:\iltdoc\paw\bridge\paw\DOT\_0\_cas\Detail\_30RD\_project\0366M89\CADD\30RD\66M89\_DETAILS



	10-YR HWE	50-YR HWE	100-YR HWE
EXISTING 15" RCP	100.22	101.07	101.56
PROPOSED 18" RCP	100.11	100.70	101.00

**NOTES:**  
THE SURVEY WAS BASED ON AN ASSUMED DATUM OF 100.00 AT THE EAST EDGE OF THE NORTH HEADWALL.  
  
THE PROPOSED INVERTS ARE 98.60/98.50, WHICH PRODUCES A BARREL SLOPE OF 0.17%.

**NOTES:**  
REMOVE THE EXISTING PIPE CULVERT  
  
REPLACE THE REMOVED PIPE CULVERT WITH A PIPE CULVERT CLASS A, TYPE 2 18"  
  
INSTALL CONCRETE END SECTION 18"

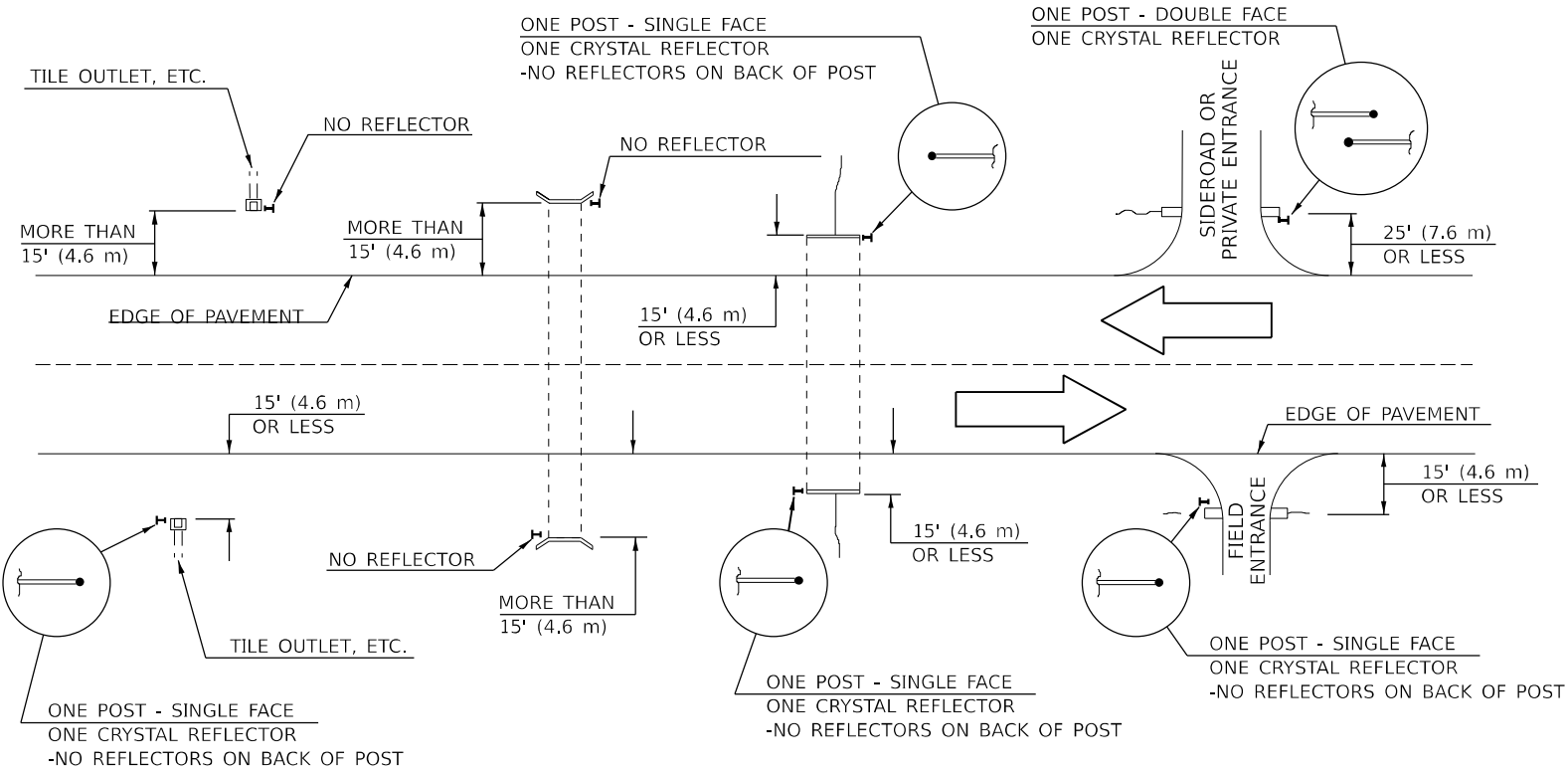
MODEL: DETAIL (Sheet)  
FILE NAME: P:\PROJECTS\2023\03\2023-03-15\IADOT\Documents\DOT Office\District 3\ORD Project\2697\CAD\DWG\2697.DWG

USER NAME = timothy.zletsch	DESIGNED -	REVISED -
PLOT SCALE = 0.16666833' / in.	DRAWN -	REVISED -
PLOT DATE = 5/11/2023	CHECKED -	REVISED -
	DATE -	REVISED -

**STATE OF ILLINOIS  
DEPARTMENT OF TRANSPORTATION**

<b>DETAILS</b>			
SCALE:	SHEET 1 OF 5 SHEETS	STA. ____+____ TO STA. ____+____	

F.A.P. RTE.	SECTION	COUNTY	TOTAL SHEETS	SHEET NO.
317	[20,21]RS-6	IROQUOIS	22	18
CONTRACT NO. 66M89			ILLINOIS   FED. AID PROJECT	



**IDENTIFICATION OF ROADSIDE HAZARDS FOR TWO-LANE ROADWAYS**

**BILL OF MATERIALS**

DELINEATOR TYPE	SINGLE FACE	DOUBLE FACE	NO REFLECTOR	TOTAL DELINEATORS
SINGLE CRYSTAL	24		N/A	24
SINGLE CRYSTAL			TOTAL	24

**NOTES**

QUANTY FOR CROSS ROAD CULVERTS ONLY

**NOTES**

DELINEATORS FOR ROADSIDE HAZARDS SHALL ONLY BE PLACED AT LOCATIONS WHERE THERE IS NO GUARDRAIL, OR OTHER PERMANENT BARRIER, ON THE SAME SIDE OF ROAD AS THE HAZARD.

DELINEATORS FOR ROADSIDE HAZARDS SHALL ONLY BE PLACED AT LOCATIONS WHERE DELINEATORS ARE NOT IN PLACE ALONG THE EDGE OF SHOULDER.

EACH POST SHALL BE CONSIDERED AS ONE DELINEATOR FOR PAYMENT, REGARDLESS OF THE NUMBER OF DELINEATORS ATTACHED TO IT.

FOR ONE-WAY ROADWAYS THE APPLICATION SHALL BE SIMILAR WITH DELINEATORS PLACED ON THE TRAFFIC APPROACH SIDE OF HAZARDS AND OBJECTS. ONLY SINGLE FACE DELINEATORS WILL BE REQUIRED ON ONE-WAY ROADWAYS. CRYSTAL ON RIGHT SIDE, AMBER ON LEFT.

FOR OTHER DELINEATOR APPLICATIONS, REFER TO HIGHWAY STANDARD 635001.

MODEL: DETAIL.dwg (Sheet) FILE NAME: P:\PROJECTS\2021\202106\210618\21061801\21061801.DWG PROJECT: IROQUOIS COUNTY ROADWAY IMPROVEMENTS CONTRACT NO. 66M89

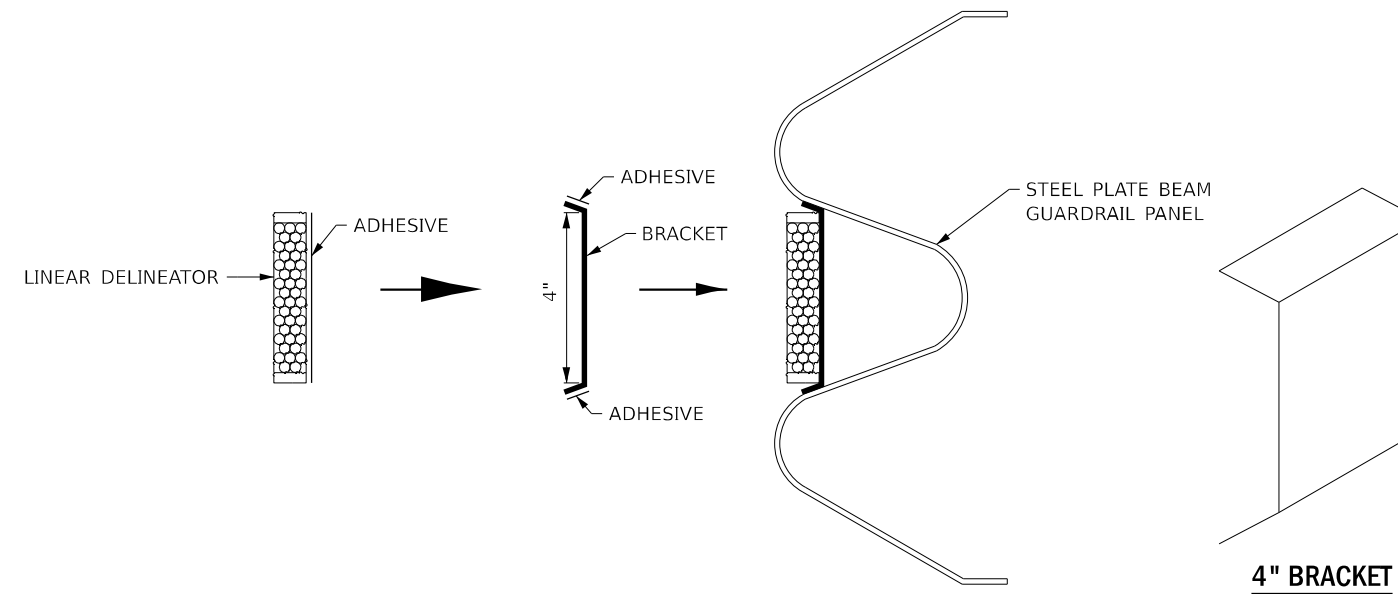
USER NAME = timothy.zletsch	DESIGNED -	REVISED -
PLOT SCALE = 0.16666633' / in.	DRAWN -	REVISED -
PLOT DATE = 5/11/2023	CHECKED -	REVISED -
	DATE -	REVISED -

**STATE OF ILLINOIS  
DEPARTMENT OF TRANSPORTATION**

SCALE: 1"=50'	SHEET 2	OF 5 SHEETS	STA. ___+___	TO STA. ___+___
---------------	---------	-------------	--------------	-----------------

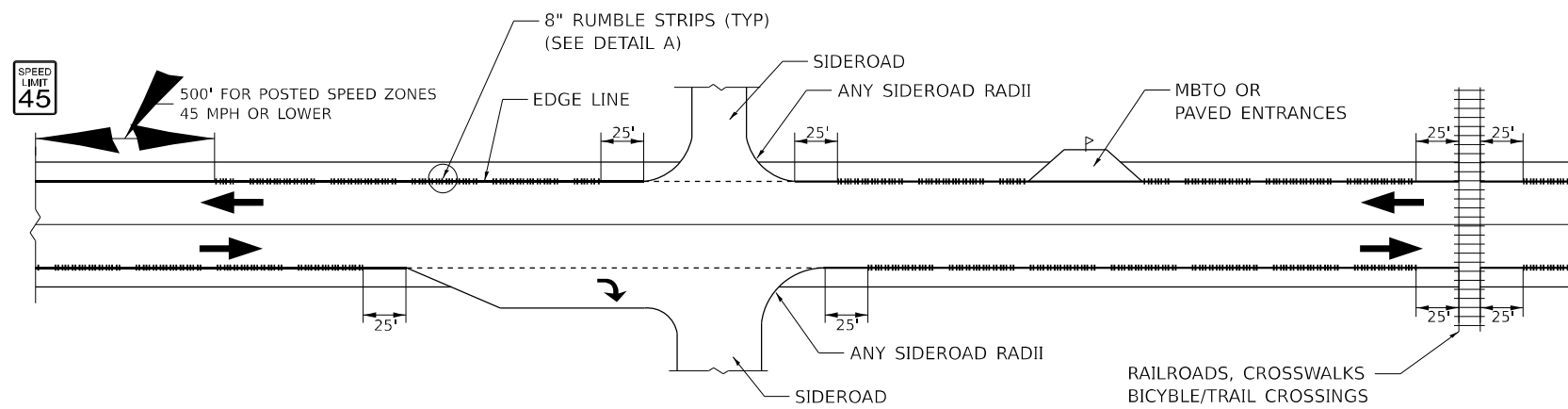
F.A.P. RTE.	SECTION	COUNTY	TOTAL SHEETS	SHEET NO.
317	[20,21]RS-6	IROQUOIS	22	19
CONTRACT NO. 66M89				
ILLINOIS FED. AID PROJECT				

**DETAILS**



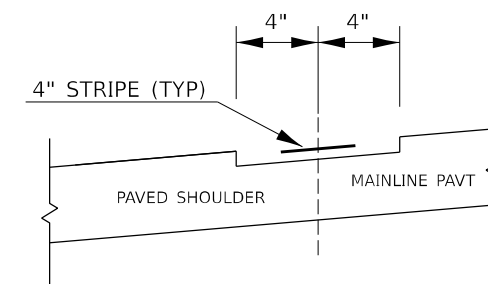
### LINEAR DELINEATOR APPLICATION TO STANDARD GALVANIZED GUARDRAIL

LINEATOR DELINEATOR SHALL BE APLIED ACCORDING TO THE MANUFACTURER'S RECOMMENDATIONS



### RUMBLE STRIPES APPLICATION

- 1) APPLICATION AND GROOVING PER HWY STND 642006 EXCEPT THAT RUMBLE STRIPS SHALL BE ON EDGE LINE.
- 2) ADDITIONAL OMISSIONS AT GORES, RAMPS, RIGHT & LEFT TURN DECELERATION LANES AND BRIDGE DECKS / APPROACH SLABS (NOT SHOWN)



DETAIL A

MODEL: DETAIL 3 (Sheet) FILE NAME: P:\MIDOT\Documents\MIDOT Office\District 3\ORD Project\366189\CADD\366189 DETAILS

USER NAME = timothy.zletsch	DESIGNED -	REVISED -
PLOT SCALE = 0.16666833' / in.	DRAWN -	REVISED -
PLOT DATE = 5/11/2023	CHECKED -	REVISED -
	DATE -	REVISED -

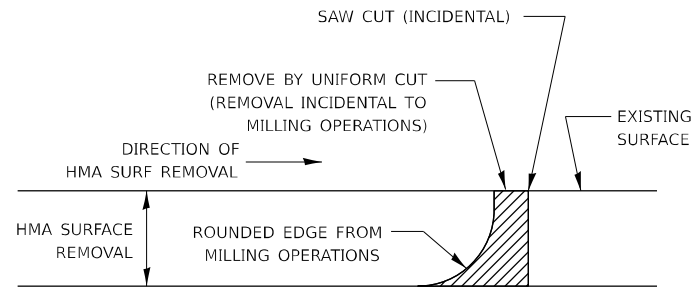
**STATE OF ILLINOIS  
DEPARTMENT OF TRANSPORTATION**

SCALE: 1"=50' SHEET 3 OF 5 SHEETS STA. \_\_\_+\_\_\_ TO STA. \_\_\_+\_\_\_

DETAILS

F.A.P. RTE.	SECTION	COUNTY	TOTAL SHEETS	SHEET NO.
317	[20,21]RS-6	IROQUOIS	22	20
CONTRACT NO. 66M89				
ILLINOIS FED. AID PROJECT				

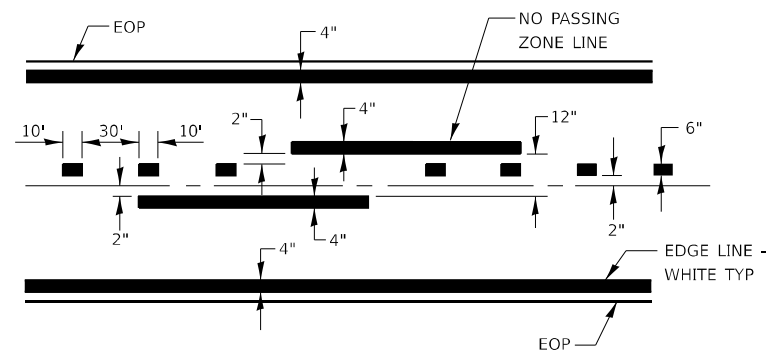




**NOTE**

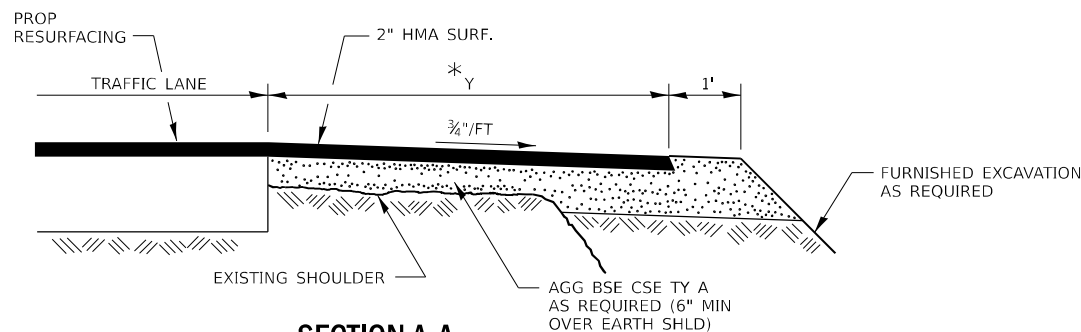
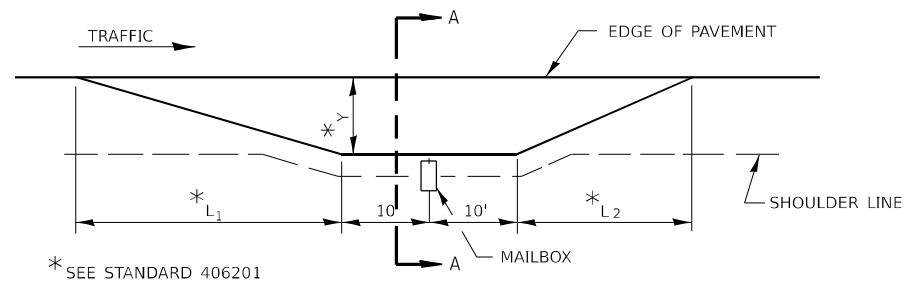
WHEN MILLING OPERATIONS PRODUCE A ROUNDED EDGE, THEN A SAW CUT SHALL BE USED TO MANUFACTURE A PERPENDICULAR EDGE AS SHOWN IN THE DETAIL. THE ENGINEER SHALL BE THE SOLE JUDGE CONCERNING THE USE OF THIS DETAIL.

**HMA DETAIL AT BUTT JOINTS**



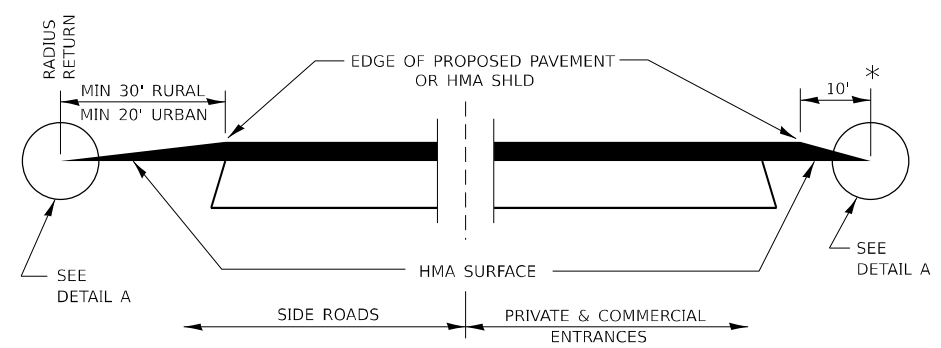
CENTERLINE & NO PASSING ZONE LINES - YELLOW

**PAVEMENT MARKING**



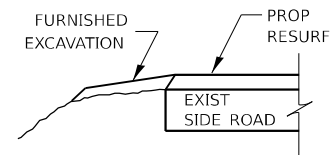
**SECTION A-A**

**RURAL MAILBOX TURNOUT DETAILS**

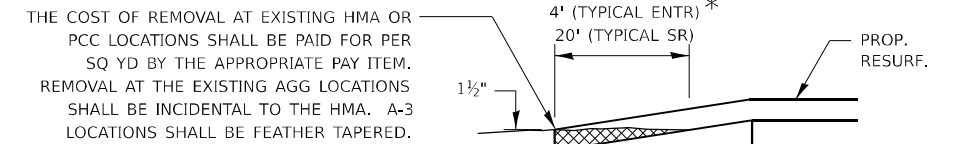


**SECTION A-A**

**DETAILS AT ENTRANCES & SIDE ROADS**

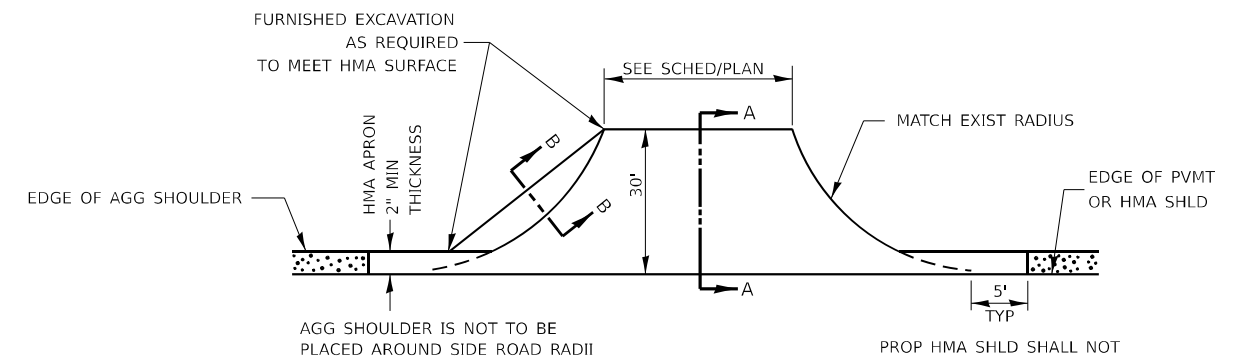


**SECTION B-B**

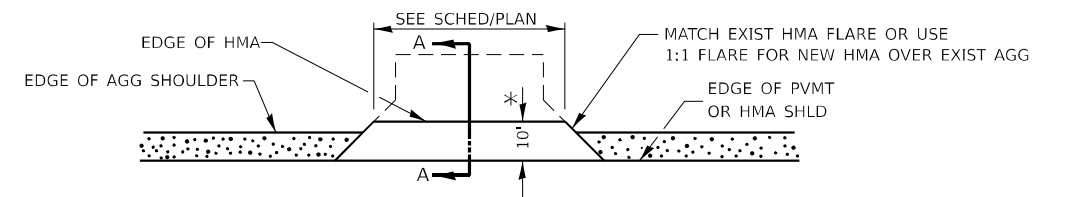


**DETAIL A**

THE COST OF REMOVAL AT EXISTING HMA OR PCC LOCATIONS SHALL BE PAID FOR PER SQ YD BY THE APPROPRIATE PAY ITEM. REMOVAL AT THE EXISTING AGG LOCATIONS SHALL BE INCIDENTAL TO THE HMA. A-3 LOCATIONS SHALL BE FEATHER TAPERED.



**PLAN AT SIDE ROADS**



**PLAN AT PRIVATE & COMMERCIAL ENTRANCES**

(DO NOT RESURFACE FIELD ENTRANCES)

\* PROPOSED HMA RESURFACING AT PUBLIC EDUCATIONAL FACILITY ENTRANCES SHALL BE EXTENDED TO THE RIGHT-OF-WAY LIMITS.

MODEL: DETAIL.dwg (Sheet) FILE NAME: P:\BIDDING\Documents\DOT Office\District 3\ORD Project\0368\MS\CADD\0368\MS\DETAILS

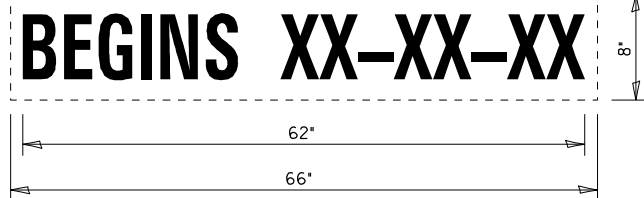
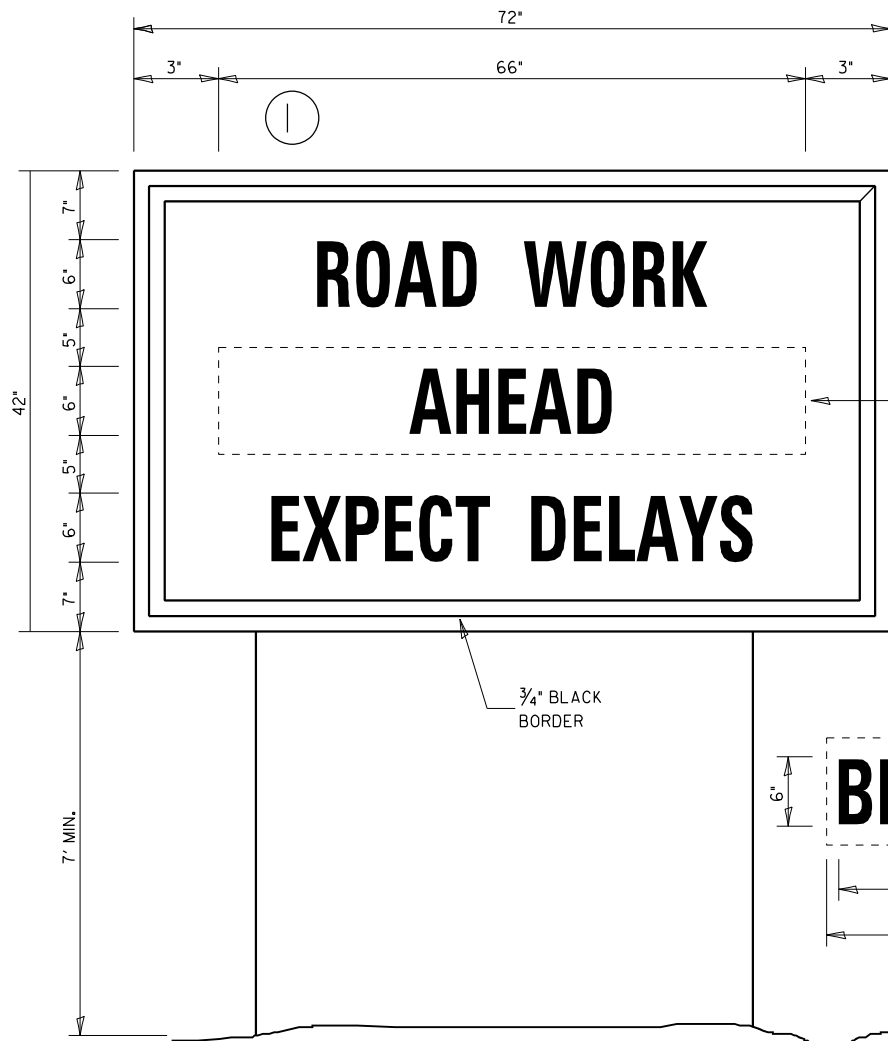
USER NAME = timothy.zletsch	DESIGNED -	REVISED -
DRAWN -	REVISED -	
PLOT SCALE = 0.16666833' / in.	CHECKED -	REVISED -
PLOT DATE = 5/11/2023	DATE -	REVISED -

**STATE OF ILLINOIS  
DEPARTMENT OF TRANSPORTATION**

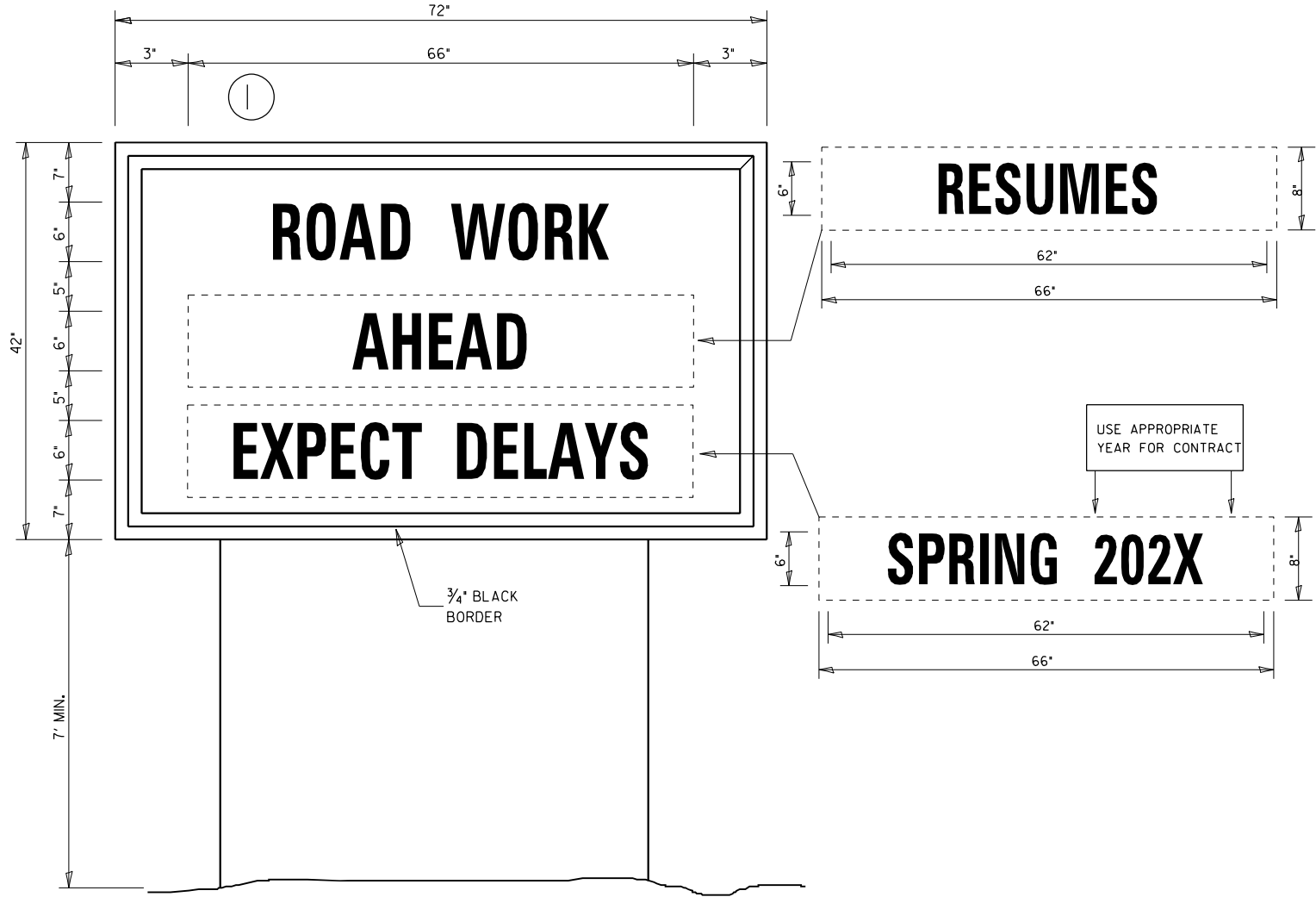
SCALE: 1"=50' SHEET 4 OF 5 SHEETS STA. \_\_\_+\_\_\_ TO STA. \_\_\_+\_\_\_

**DETAILS**

F.A.P. RTE.	SECTION	COUNTY	TOTAL SHEETS	SHEET NO.
317	[20,21]RS-6	IROQUOIS	22	21
CONTRACT NO. 66M89				
ILLINOIS FED. AID PROJECT				



**TEMPORARY INFORMATION SIGNING**



**WINTER SHUT DOWN SIGNING**

**NOTES:**

1. USE 6" D BLACK LETTERING ON FLOURESENT ORANGE BACKGROUND.
2. ERECT SIGNS AT LOCATIONS IN ADVANCE OF THE "ROAD CONSTRUCTION AHEAD" SIGNS AS DIRECTED BY THE ENGINEER.
3. ERECT SIGN ① WITH INSTALLED PANEL ② A MINIMUM OF ONE WEEK PRIOR TO THE START OF THE LANE CLOSURE.
4. REMOVE PANEL ② ON THAT DATE.
5. SEE SPECIAL PROVISION "TEMPORARY INFORMATION SIGNING" FOR ADDITIONAL INFORMATION.
6. WILL BE PAID FOR PER SO FT AS "TEMPORARY INFORMATION SIGNING". EACH SIGN = 2150 FT AND THE DATE PANEL ② WILL NOT BE MEASURED SEPARATELY FOR PAYMENT.

MODEL: DETAIL 5 (Sheet) FILE NAME: P:\MIDOT\Documents\IDOT Office\District 3\ORD Project\366M89\CD\366M89 DETAILS

USER NAME = timothy.zletsch	DESIGNED - _____	REVISED - _____
PLOT SCALE = 0.16666833 1/ in.	DRAWN - _____	REVISED - _____
PLOT DATE = 5/11/2023	CHECKED - _____	REVISED - _____
	DATE - _____	REVISED - _____

**STATE OF ILLINOIS  
DEPARTMENT OF TRANSPORTATION**

SCALE: 1"=50' SHEET 5 OF 5 SHEETS STA. \_\_\_+\_\_\_ TO STA. \_\_\_+\_\_\_

DETAILS

F.A.P. RTE.	SECTION	COUNTY	TOTAL SHEETS	SHEET NO.
317	[20,21]RS-6	IROQUOIS	22	22
CONTRACT NO. 66M89			ILLINOIS FED. AID PROJECT	