

INDEX OF SHEETS

- 1 . COVER SHEET
- 2 . GENERAL NOTES
- 3 4 . SUMMARY OF QUANTITIES
- 5 . TYPICAL SECTIONS
- 6 - 7 . SCHEDULES
- 8 . TRAFFIC CONTROL AND PROTECTION, STANDARD 701400
- 9 - 10 . CLASS A PATCHING DETAILS
- 11 . TYPICAL PAVEMENT MARKING

HIGHWAY STANDARDS

- 000001-08 STANDARD SYMBOLS, ABBREVIATIONS AND PATTERNS
- 001001-02 AREAS OF REINFORCEMENT BARS
- 001006 DECIMAL OF AN INCH AND OF A FOOT
- 701101-05 OFF-ROAD OPERATIONS, MULTILANE, 15' TO 24' FROM PAVEMENT EDGE
- 701106-02 OFF-ROAD OPERATIONS, MULTILANE, MORE THAN 15' AWAY
- 701401-13 LANE CLOSURE, FREEWAY/EXPRESSWAY
- 701411-09 LANE CLOSURE, MULTILANE, AT ENTRANCE OR EXIT RAMP FOR SPEEDS ≥ 45 MPH
- 701426-09 LANE CLOSURE, MULTILANE INTERMITTENT OR MOVING OPERATION, FOR SPEEDS ≥ 45 MPH
- 701428-01 TRAFFIC CONTROL, SETUP AND REMOVAL, FREEWAY/EXPRESSWAY
- 701901-08 TRAFFIC CONTROL DEVICES

**STATE OF ILLINOIS
DEPARTMENT OF TRANSPORTATION**

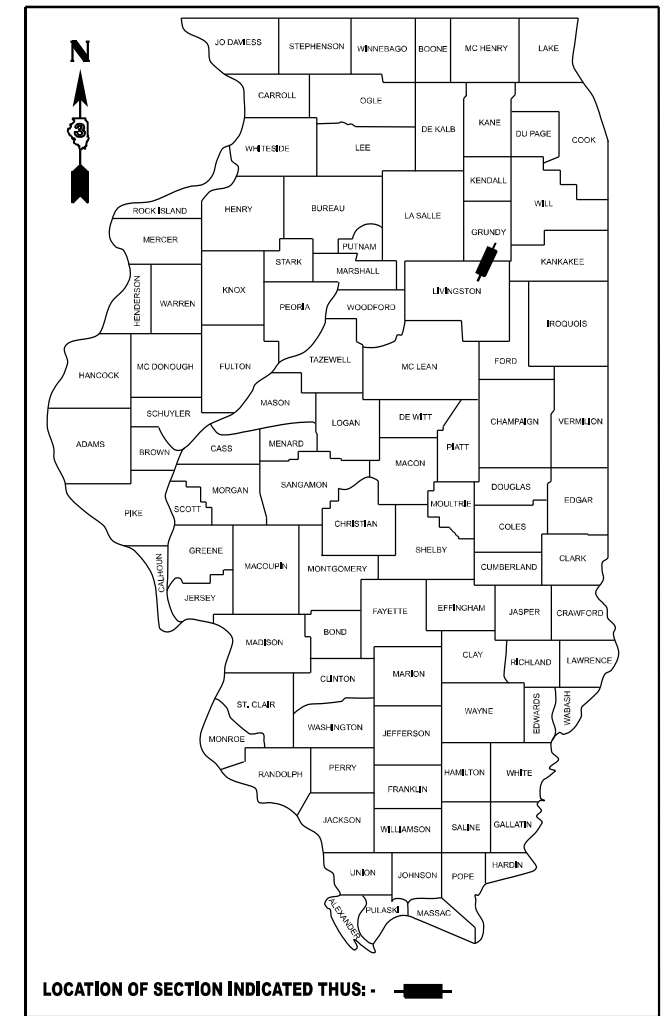
**PROPOSED
HIGHWAY PLANS**

**F.A.I. ROUTE 55 (I-55)
SECTION (53-1, 32-3)PP-1
PAVEMENT PATCHING
LIVINGSTON AND GRUNDY COUNTIES**

C-93-087-23

F.A.I. RTE.	SECTION	COUNTY	TOTAL SHEETS	SHEET NO.
55	(53-1, 32-3)PP-1	LIV & GR	11	1
		ILLINOIS	CONTRACT NO. 66N51	

D-93-067-23



FUNCTIONAL CLASSIFICATION

RURAL/URBAN INTERSTATE
F.A.I. ROUTE 55 (I-55)
2021 ADT = 24,800
P.V. 47.7 % S.U. 21 % M.U. 31.6 %

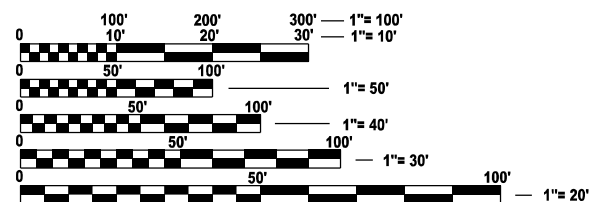
STATE OF ILLINOIS
DEPARTMENT OF TRANSPORTATION

SUBMITTED May 18 2023
David Howard REGIONAL ENGINEER
June 30, 2023
John A. Etkin ENGINEER OF DESIGN AND ENVIRONMENT
June 30, 2023
Stephen M. Smith DIRECTOR OF HIGHWAYS PROJECT IMPLEMENTATION

**PRINTED BY THE AUTHORITY
OF THE STATE OF ILLINOIS**

**BEGIN IMPROVEMENT
M.M. 215.0**

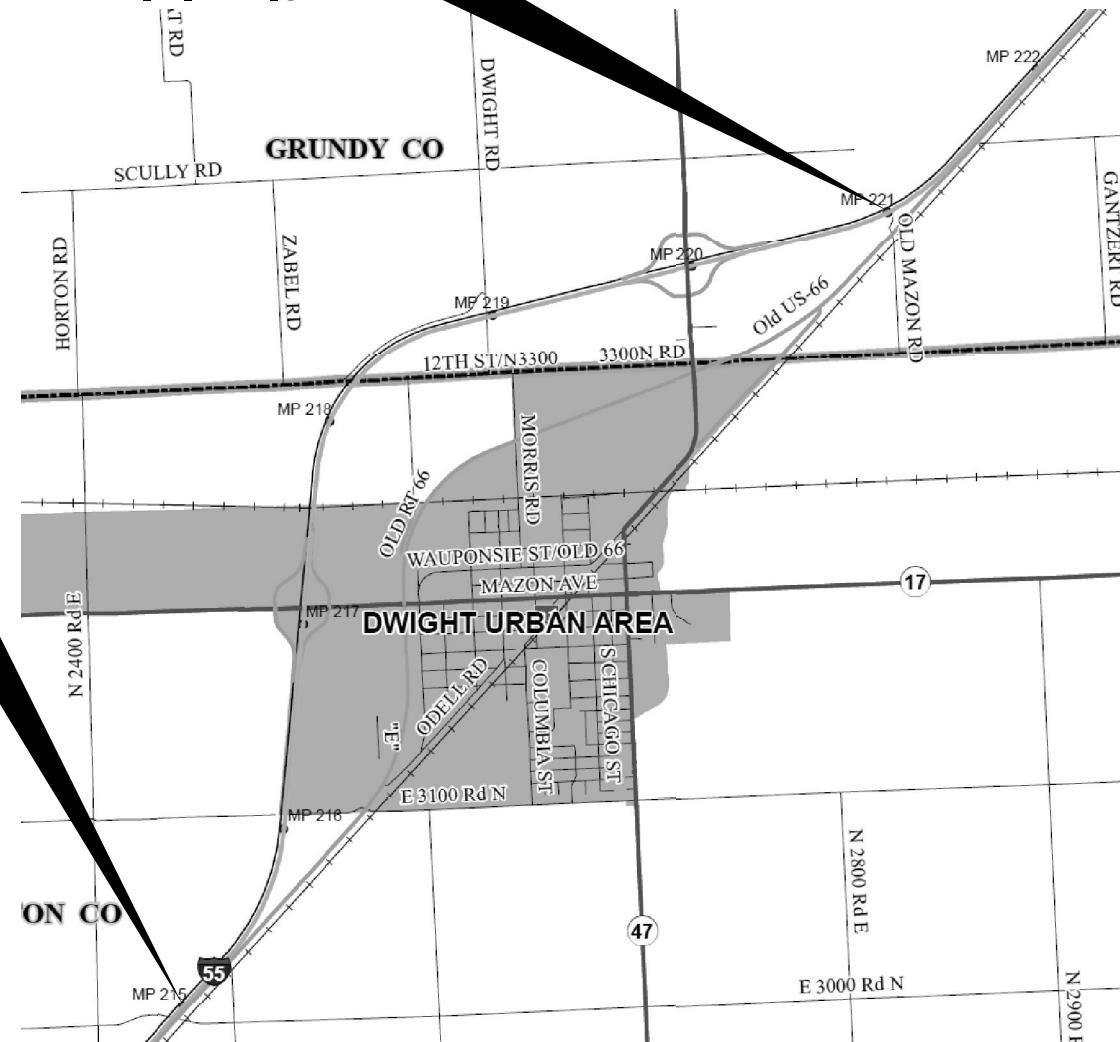
**END IMPROVEMENT
M.M. 221.0**



FULL SIZE PLANS HAVE BEEN PREPARED USING STANDARD ENGINEERING SCALES. REDUCED SIZED PLANS WILL NOT CONFORM TO STANDARD SCALES. IN MAKING MEASUREMENTS ON REDUCED PLANS, THE ABOVE SCALES MAY BE USED.

J.U.L.I.E.
JOINT UTILITY LOCATION INFORMATION FOR EXCAVATION
1-800-892-0123
OR 811

**PROJECT ENGINEER: YOGESH PATEL P.E.
UNIT CHIEF: RON WOODSHANK
DISTRICT NO. 3 (815) 434-6131
CONTRACT NO. 66N51**



GROSS LENGTH = 33,260 FT. = 6.30 MILES
NET LENGTH = 23,590 FT. = 4.47 MILES

GENERAL NOTES

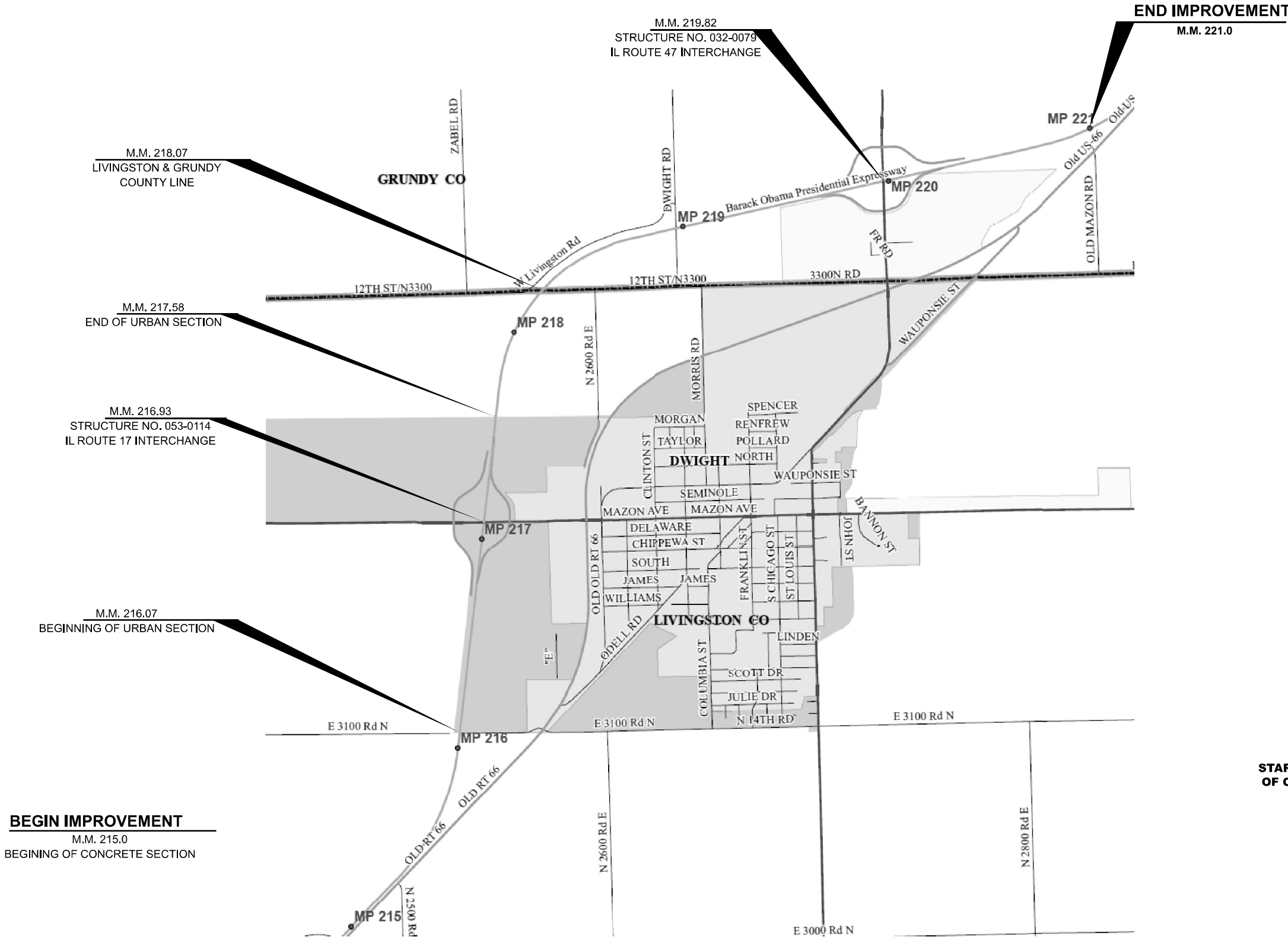
ALL EXCAVATED MATERIAL, WHICH INCLUDES DIGGING OR GRADING OF ANY SOIL OR FILL MATERIAL, WITH THE EXCEPTION OF AGGREGATE FILLS, MUST BE INCORPORATED WITHIN THE IDOT RIGHT OF WAY.

COMMITMENTS

NONE

END IMPROVEMENT

M.M. 221.0



**STATE OF ILLINOIS
DEPARTMENT OF TRANSPORTATION
DISTRICT THREE
AS BUILT INFORMATION**

SUPERVISING CONSTRUCTION FIELD ENGINEER

RESIDENT ENGINEER / TECHNICIAN

**START & END DATES
OF CONSTRUCTION:**

INSPECTORS:

BEGIN IMPROVEMENT

M.M. 215.0
BEGINNING OF CONCRETE SECTION

**STATE OF ILLINOIS
DEPARTMENT OF TRANSPORTATION**

GENERAL NOTES

SCALE: _____ SHEET 1 OF 1 SHEETS STA. _____ TO STA. _____

F.A.I. RTE.	SECTION	COUNTY	TOTAL SHEETS	SHEET NO.
55	(53-1,32-3)PP-1	LIV & GR	11	2
CONTRACT NO. 66N51				
ILLINOIS FED. AID PROJECT				

MODEL: D:\infocad\pilot\pilot.dwg; FILE NAME: D:\infocad\pilot\pilot.dwg; PROJECT: 66N51; DRAWING: 66N51-2; DATE: 4/25/2023

USER NAME = ronald.woodshank	DESIGNED - RW	REVISED - _____
	DRAWN - RW	REVISED - _____
PLOT SCALE = 100,00' / in.	CHECKED - YP	REVISED - _____
PLOT DATE = 5/15/2023	DATE - 4/25/2023	REVISED - _____

CODE NO.	ITEM	UNIT	TOTAL QUANTITY	CONSTRUCTION CODE		
				CONTRACT MAINTENANCE		
				100 % STATE		
				LIVINGSTON COUNTY	GRUNDY COUNTY	
				ROADWAY	ROADWAY	ROADWAY
				0006	0006	0006
				RURAL	URBAN	RURAL
Z0018913	DRILL AND GROUT #8 TIE BARS	EACH	1848	308	616	924

MODEL: Default
FILE NAME: D:\Illinois\Jen\by.com\PM\DOT\Documents\DOT Office\District 3\ORD Projects\038851\CAD\Drawings.dgn

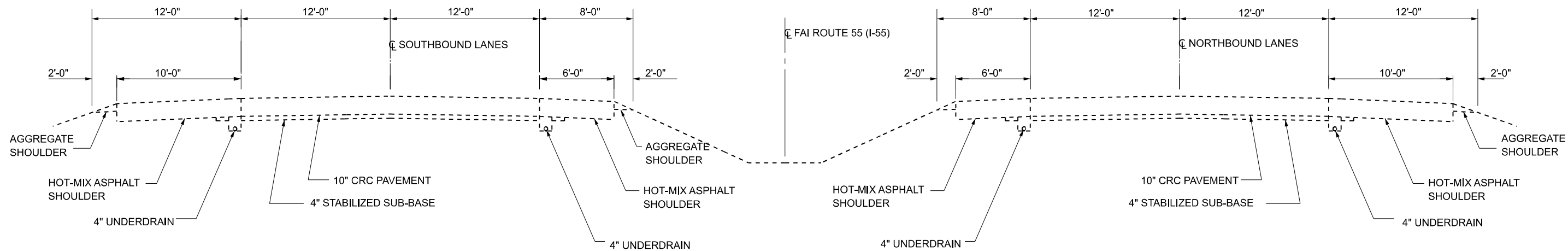
USER NAME = ronald.woodshank	DESIGNED - RW	REVISED - _____
	DRAWN - RW	REVISED - _____
PLOT SCALE = 100,00' / in.	CHECKED - YP	REVISED - _____
PLOT DATE = 5/15/2023	DATE - 4/25/2023	REVISED - _____

**STATE OF ILLINOIS
DEPARTMENT OF TRANSPORTATION**

SUMMARY OF QUANTITIES

SCALE: _____ SHEET 2 OF 2 SHEETS STA. _____ TO STA. _____

F.A.I. RTE.	SECTION	COUNTY	TOTAL SHEETS	SHEET NO.
55	(53-1,32-3)PP-1	LIV & GR	11	4
			CONTRACT NO. 66N51	
		ILLINOIS	FED. AID PROJECT	



**TYPICAL SECTION
MAINLINE
M.M. 215.0 TO M.M. 221.0**

MODEL: Default
FILE NAME: J:\work\p\m\DOT\Documents\DOT Office\District 3\ORD Projects\66N51\CAD\66N51.dgn

USER NAME = ronald.woodshank	DESIGNED - RW	REVISED - _____
	DRAWN - RW	REVISED - _____
PLOT SCALE = 100.00' / in.	CHECKED - YP	REVISED - _____
PLOT DATE = 5/15/2023	DATE - 4/25/2023	REVISED - _____

**STATE OF ILLINOIS
DEPARTMENT OF TRANSPORTATION**

TYPICAL SECTIONS

SCALE: _____ SHEET 1 OF 1 SHEETS STA. _____ TO STA. _____

F.A.I. RTE.	SECTION	COUNTY	TOTAL SHEETS	SHEET NO.
55	(53-1,32-3)PP-1	LIV & GR	11	5
CONTRACT NO. 66N51				
ILLINOIS FED. AID PROJECT				

SCHEDULES - CLASS A PATCHING - NORTHBOUND LANES - LIVINGSTON COUNTY

DRIVING LANE									
LOCATION		PATCH LENGTH	CLASS A PATCHING			PATCH REINFORCEMENT	SAW CUTS	DRILL AND GROUT #6 TIE BARS	DRILL AND GROUT #8 TIE BARS
			TYPE II 10"	TYPE III 10"	TYPE IV 10"				
RURAL	URBAN	FEET	SQ YD	SQ YD	SQ YD	SQ YD	FOOT	EACH	EACH
MILE MARKER	MILE MARKER								
215.5		6	8			8	36		28
215.8		6	8			8	36		28
215.9		6	8			8	36		28
216.0		6	8			8	36		28
	216.1	8	11			11	40		28
	216.2	12		16		16	48		28
	216.2	12		16		16	48		28
	216.5	8	11			11	40		28
	216.7	6	8			8	36		28
	216.9	10	13			13	44		28
	216.9	6	8			8	36		28
	216.9	10	13			13	44		28
	217.0	9	12			12	42		28
	217.0	6	8			8	36		28
	217.0	10	13			13	44		28
	217.1	6	8			8	36		28
	217.1	8	11			11	40		28
	217.2	12		16		16	48		28
	217.3	20			27	27	64	6	28
	217.5	40			53	53	104	13	28
	217.5	30			40	40	84	10	28
217.7		6	8			8	36		28
217.7		20			27	27	64	6	28
218.0		6	8			8	36		28
TOTALS		275	172	48	147	367	1150	35	700

SCHEDULES - CLASS A PATCHING - SOUTHBOUND LANES - LIVINGSTON COUNTY

DRIVING LANE									
LOCATION		PATCH LENGTH	CLASS A PATCHING			PATCH REINFORCEMENT	SAW CUTS	DRILL AND GROUT #6 TIE BARS	DRILL AND GROUT #8 TIE BARS
			TYPE II 10"	TYPE III 10"	TYPE IV 10"				
RURAL	URBAN	FEET	SQ YD	SQ YD	SQ YD	SQ YD	FOOT	EACH	EACH
MILE MARKER	MILE MARKER								
218.1		25			33	33	74	8	28
217.9		6	8			8	36		28
217.7		15		20		20	54		28
	217.5	12		16		16	48		28
	216.9	12		16		16	48		28
	216.6	12		16		16	48		28
	216.2	30			40	40	84	10	28
216.0		10	13			13	44		28
TOTALS		122	21	68	73	162	436	18	224

MODEL: D:\inf\...
FILE NAME: ...

USER NAME = ronald.woodshank	DESIGNED - RW	REVISED - _____
DRAWN - RW	CHECKED - YP	REVISED - _____
PLOT SCALE = 100.00' / in.	DATE - 4/25/2023	REVISED - _____
PLOT DATE = 5/15/2023		

**STATE OF ILLINOIS
DEPARTMENT OF TRANSPORTATION**

**SCHEDULES
LIVINGSTON COUNTY**

SCALE: _____ SHEET 1 OF 1 SHEETS STA. _____ TO STA. _____

F.A.I. RTE.	SECTION	COUNTY	TOTAL SHEETS	SHEET NO.
55	(53-1,32-3)PP-1	LIV & GR	11	6
			CONTRACT NO. 66N51	
		ILLINOIS FED. AID PROJECT		

SCHEDULE - CLASS A PATCHING - NORTHBOUND LANES - GRUNDY COUNTY

DRIVING LANE									
LOCATION		PATCH LENGTH	CLASS A PATCHING			PATCH REINFORCEMENT	SAW CUTS	DRILL AND GROUT #6 TIE BARS EACH	DRILL AND GROUT #8 TIE BARS EACH
			TYPE II 10"	TYPE III 10"	TYPE IV 10"				
RURAL	URBAN	FEET	SQ YD	SQ YD	SQ YD	SQ YD	FOOT	EACH	EACH
MILE MARKER	MILE MARKER								
218.2		20			27	27	64	6	28
218.4		8	11			11	40		28
218.5		30			40	40	84	10	28
218.6		20			27	27	64	6	28
218.9		8	11			11	40		28
219.0		50			67	67	124	16	28
219.1		8	11			11	40		28
219.1		40			53	53	104	13	28
219.1		8	11			11	40		28
219.2		12		16		16	48		28
219.2		6	8			8	36		28
219.9		22			29	29	68	7	28
220.1		50			67	67	124	16	28
220.2		10	13			13	44		28
220.2		6	8			8	36		28
220.6		20			27	27	64	6	28
220.7		10	13			13	44		28
TOTALS		328	86	16	337	439	1064	80	476

SCHEDULES - CLASS A PATCHING - SOUTHBOUND LANES - GRUNDY COUNTY

PASSING LANE										DRIVING LANE							
LOCATION		PATCH LENGTH	CLASS A PATCHING			PATCH REINFORCEMENT	SAW CUTS	DRILL AND GROUT #6 TIE BARS EACH	DRILL AND GROUT #8 TIE BARS EACH								
			TYPE II 10"	TYPE III 10"	TYPE IV 10"												
RURAL	URBAN	FEET	SQ YD	SQ YD	SQ YD	SQ YD	FOOT	EACH	EACH								
MILE MARKER	MILE MARKER																
219.0		10	13			13	44		28								
218.9		10	13			13	44		28								
218.3		6	8			8	36		28								
218.1		15		20		20	54		28								
SUBTOTALS		41	34	20		54	178		112								
TOTALS - BOTH LANES		208	101	56	120	#REF!	800	29	448								

LOCATION		PATCH LENGTH	CLASS A PATCHING			CLASS A PATCH EXPANSION JOINT	SAW CUTS	DRILL AND GROUT #6 TIE BARS EACH	DRILL AND GROUT #8 TIE BARS EACH
			TYPE II 10"	TYPE III 10"	TYPE IV 10"				
RURAL	URBAN	FEET	SQ YD	SQ YD	SQ YD	FOOT	FOOT	EACH	EACH
MILE MARKER	MILE MARKER								
220.7		40			53	104	13	28	
220.6		6	8			36		28	
219.9		20			27	64	6	28	
219.8		15		20		54		28	
219.6		10	13			44		28	
219.3		8	11			40		28	
219.2		30			40	84	10	28	
219.2		6	8			36		28	
219.1		12		16		48		28	
219.8		6	8			36		28	
218.6		8	11			40		28	
218.3		6	8			36		28	
TOTALS		167	67	36	120	120	622	29	336

MODEL: D:\inf\... FILE NAME: ...

USER NAME = ronald.woodshank	DESIGNED - RW	REVISED - _____
DRAWN - RW	CHECKED - YP	REVISED - _____
PLOT SCALE = 100.00' / in.	DATE - 4/25/2023	REVISED - _____
PLOT DATE = 5/15/2023		

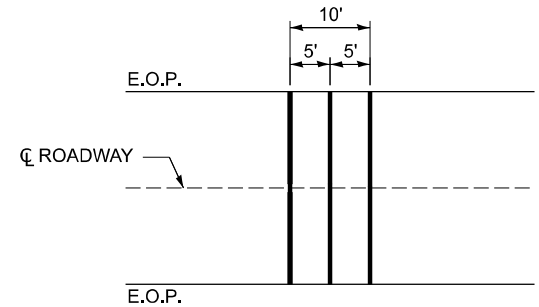
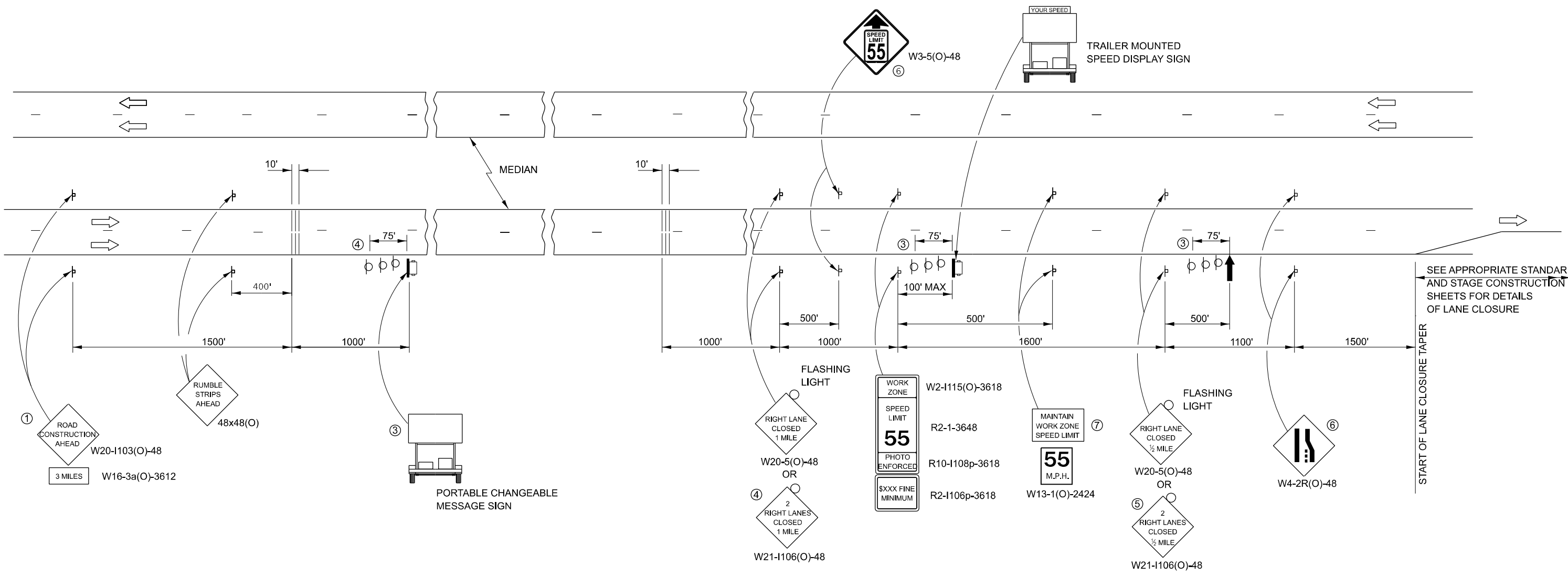
**STATE OF ILLINOIS
DEPARTMENT OF TRANSPORTATION**

**SCHEDULES
GRUNDY COUNTY**

SCALE: _____ SHEET 1 OF 1 SHEETS STA. _____ TO STA. _____

F.A.I. RTE.	SECTION	COUNTY	TOTAL SHEETS	SHEET NO.
55	(53-1,32-3)PP-1	LIV & GR	11	7
CONTRACT NO. 66N51				
ILLINOIS FED. AID PROJECT				

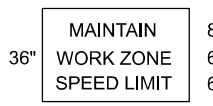
MODEL: D:\infocad\pilot\pilot.dwg
 FILE NAME: \\pilot\pilot.dwg
 PROJECT: I-55/US-51/US-48/US-151/US-152/US-153/US-154/US-155/US-156/US-157/US-158/US-159/US-160/US-161/US-162/US-163/US-164/US-165/US-166/US-167/US-168/US-169/US-170/US-171/US-172/US-173/US-174/US-175/US-176/US-177/US-178/US-179/US-180/US-181/US-182/US-183/US-184/US-185/US-186/US-187/US-188/US-189/US-190/US-191/US-192/US-193/US-194/US-195/US-196/US-197/US-198/US-199/US-200/US-201/US-202/US-203/US-204/US-205/US-206/US-207/US-208/US-209/US-210/US-211/US-212/US-213/US-214/US-215/US-216/US-217/US-218/US-219/US-220/US-221/US-222/US-223/US-224/US-225/US-226/US-227/US-228/US-229/US-230/US-231/US-232/US-233/US-234/US-235/US-236/US-237/US-238/US-239/US-240/US-241/US-242/US-243/US-244/US-245/US-246/US-247/US-248/US-249/US-250/US-251/US-252/US-253/US-254/US-255/US-256/US-257/US-258/US-259/US-260/US-261/US-262/US-263/US-264/US-265/US-266/US-267/US-268/US-269/US-270/US-271/US-272/US-273/US-274/US-275/US-276/US-277/US-278/US-279/US-280/US-281/US-282/US-283/US-284/US-285/US-286/US-287/US-288/US-289/US-290/US-291/US-292/US-293/US-294/US-295/US-296/US-297/US-298/US-299/US-300/US-301/US-302/US-303/US-304/US-305/US-306/US-307/US-308/US-309/US-310/US-311/US-312/US-313/US-314/US-315/US-316/US-317/US-318/US-319/US-320/US-321/US-322/US-323/US-324/US-325/US-326/US-327/US-328/US-329/US-330/US-331/US-332/US-333/US-334/US-335/US-336/US-337/US-338/US-339/US-340/US-341/US-342/US-343/US-344/US-345/US-346/US-347/US-348/US-349/US-350/US-351/US-352/US-353/US-354/US-355/US-356/US-357/US-358/US-359/US-360/US-361/US-362/US-363/US-364/US-365/US-366/US-367/US-368/US-369/US-370/US-371/US-372/US-373/US-374/US-375/US-376/US-377/US-378/US-379/US-380/US-381/US-382/US-383/US-384/US-385/US-386/US-387/US-388/US-389/US-390/US-391/US-392/US-393/US-394/US-395/US-396/US-397/US-398/US-399/US-400/US-401/US-402/US-403/US-404/US-405/US-406/US-407/US-408/US-409/US-410/US-411/US-412/US-413/US-414/US-415/US-416/US-417/US-418/US-419/US-420/US-421/US-422/US-423/US-424/US-425/US-426/US-427/US-428/US-429/US-430/US-431/US-432/US-433/US-434/US-435/US-436/US-437/US-438/US-439/US-440/US-441/US-442/US-443/US-444/US-445/US-446/US-447/US-448/US-449/US-450/US-451/US-452/US-453/US-454/US-455/US-456/US-457/US-458/US-459/US-460/US-461/US-462/US-463/US-464/US-465/US-466/US-467/US-468/US-469/US-470/US-471/US-472/US-473/US-474/US-475/US-476/US-477/US-478/US-479/US-480/US-481/US-482/US-483/US-484/US-485/US-486/US-487/US-488/US-489/US-490/US-491/US-492/US-493/US-494/US-495/US-496/US-497/US-498/US-499/US-500/US-501/US-502/US-503/US-504/US-505/US-506/US-507/US-508/US-509/US-510/US-511/US-512/US-513/US-514/US-515/US-516/US-517/US-518/US-519/US-520/US-521/US-522/US-523/US-524/US-525/US-526/US-527/US-528/US-529/US-530/US-531/US-532/US-533/US-534/US-535/US-536/US-537/US-538/US-539/US-540/US-541/US-542/US-543/US-544/US-545/US-546/US-547/US-548/US-549/US-550/US-551/US-552/US-553/US-554/US-555/US-556/US-557/US-558/US-559/US-560/US-561/US-562/US-563/US-564/US-565/US-566/US-567/US-568/US-569/US-570/US-571/US-572/US-573/US-574/US-575/US-576/US-577/US-578/US-579/US-580/US-581/US-582/US-583/US-584/US-585/US-586/US-587/US-588/US-589/US-590/US-591/US-592/US-593/US-594/US-595/US-596/US-597/US-598/US-599/US-600/US-601/US-602/US-603/US-604/US-605/US-606/US-607/US-608/US-609/US-610/US-611/US-612/US-613/US-614/US-615/US-616/US-617/US-618/US-619/US-620/US-621/US-622/US-623/US-624/US-625/US-626/US-627/US-628/US-629/US-630/US-631/US-632/US-633/US-634/US-635/US-636/US-637/US-638/US-639/US-640/US-641/US-642/US-643/US-644/US-645/US-646/US-647/US-648/US-649/US-650/US-651/US-652/US-653/US-654/US-655/US-656/US-657/US-658/US-659/US-660/US-661/US-662/US-663/US-664/US-665/US-666/US-667/US-668/US-669/US-670/US-671/US-672/US-673/US-674/US-675/US-676/US-677/US-678/US-679/US-680/US-681/US-682/US-683/US-684/US-685/US-686/US-687/US-688/US-689/US-690/US-691/US-692/US-693/US-694/US-695/US-696/US-697/US-698/US-699/US-700/US-701/US-702/US-703/US-704/US-705/US-706/US-707/US-708/US-709/US-710/US-711/US-712/US-713/US-714/US-715/US-716/US-717/US-718/US-719/US-720/US-721/US-722/US-723/US-724/US-725/US-726/US-727/US-728/US-729/US-730/US-731/US-732/US-733/US-734/US-735/US-736/US-737/US-738/US-739/US-740/US-741/US-742/US-743/US-744/US-745/US-746/US-747/US-748/US-749/US-750/US-751/US-752/US-753/US-754/US-755/US-756/US-757/US-758/US-759/US-760/US-761/US-762/US-763/US-764/US-765/US-766/US-767/US-768/US-769/US-770/US-771/US-772/US-773/US-774/US-775/US-776/US-777/US-778/US-779/US-780/US-781/US-782/US-783/US-784/US-785/US-786/US-787/US-788/US-789/US-790/US-791/US-792/US-793/US-794/US-795/US-796/US-797/US-798/US-799/US-800/US-801/US-802/US-803/US-804/US-805/US-806/US-807/US-808/US-809/US-810/US-811/US-812/US-813/US-814/US-815/US-816/US-817/US-818/US-819/US-820/US-821/US-822/US-823/US-824/US-825/US-826/US-827/US-828/US-829/US-830/US-831/US-832/US-833/US-834/US-835/US-836/US-837/US-838/US-839/US-840/US-841/US-842/US-843/US-844/US-845/US-846/US-847/US-848/US-849/US-850/US-851/US-852/US-853/US-854/US-855/US-856/US-857/US-858/US-859/US-860/US-861/US-862/US-863/US-864/US-865/US-866/US-867/US-868/US-869/US-870/US-871/US-872/US-873/US-874/US-875/US-876/US-877/US-878/US-879/US-880/US-881/US-882/US-883/US-884/US-885/US-886/US-887/US-888/US-889/US-890/US-891/US-892/US-893/US-894/US-895/US-896/US-897/US-898/US-899/US-900/US-901/US-902/US-903/US-904/US-905/US-906/US-907/US-908/US-909/US-910/US-911/US-912/US-913/US-914/US-915/US-916/US-917/US-918/US-919/US-920/US-921/US-922/US-923/US-924/US-925/US-926/US-927/US-928/US-929/US-930/US-931/US-932/US-933/US-934/US-935/US-936/US-937/US-938/US-939/US-940/US-941/US-942/US-943/US-944/US-945/US-946/US-947/US-948/US-949/US-950/US-951/US-952/US-953/US-954/US-955/US-956/US-957/US-958/US-959/US-960/US-961/US-962/US-963/US-964/US-965/US-966/US-967/US-968/US-969/US-970/US-971/US-972/US-973/US-974/US-975/US-976/US-977/US-978/US-979/US-980/US-981/US-982/US-983/US-984/US-985/US-986/US-987/US-988/US-989/US-990/US-991/US-992/US-993/US-994/US-995/US-996/US-997/US-998/US-999/US-1000



TEMPORARY RUMBLE STRIP (SPECIAL)
 FOR PAYMENT PURPOSES, EACH LANE OF TRAFFIC SHALL BE CONSIDERED "ONE EACH".

- ① THE ROAD CONSTRUCTION AHEAD SIGN SHALL BE LOCATED 3 MILES IN ADVANCE OF THE PROJECT LIMITS.
- ② TO BE PLACED IN THE MEDIAN WHEN FEASIBLE. THE MESSAGE BOARD SHALL BE USED TO DISPLAY STATUS OF LANES WITHIN THE PROJECT. THE PRIMARY MESSAGES SHALL BE:
 "RIGHT LANE CLOSED" / " x MILES AHEAD"
 "LEFT LANE CLOSED" / " x MILES AHEAD"
 "ALL LANES OPEN"
- ③ THREE, TYPE II BARRICADES, DRUMS, OR VERTICAL BARRICADES AT 25' CENTERS.
- ④ THIS SIGN SHALL BE USED WHEN 2 LANES ARE CLOSED.
- ⑤ WHEN THE LEFT LANE IS CLOSED, SWITCH THESE TWO SIGNS AND THE DIRECTION OF THE MERGE ARROW.
- ⑥ THIS SIGN SHALL ONLY BE USED IF THE EXISTING SPEED LIMIT IS GREATER THAN 65 MPH.

⑦ 48"x36" FLUORESCENT ORANGE SIGN WITH BLACK LETTERS.



"MAINTAIN WORK ZONE SPEED LIMIT" SIGN SHALL NOT BE PAID FOR SEPARATELY BUT SHALL BE INCLUDED IN THIS TRAFFIC CONTROL STANDARD.

- ↑ ARROW BOARD
- ☐ PORTABLE CHANGEABLE MESSAGE SIGN
- ⊢ SIGN
- ⊙ TYPE II BARRICADE, DRUM, OR VERTICAL BARRICADE WITH MONODIRECTIONAL FLASHING LIGHT
- ⊢ TEMPORARY RUMBLE STRIPS (SEE SPECIAL PROVISION)

GENERAL NOTE:

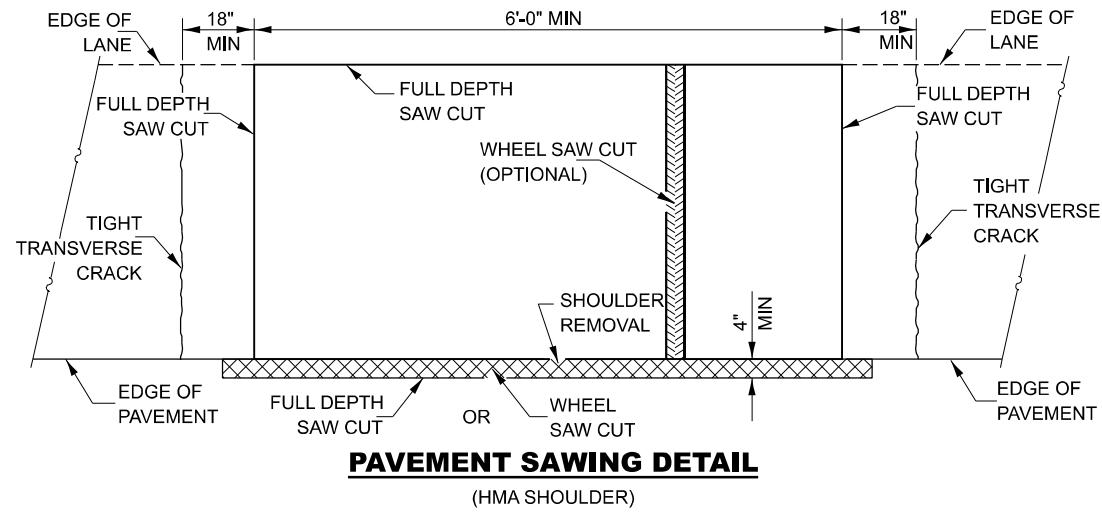
THIS STANDARD IS USED WHERE AT ANY TIME A LANE IS CLOSED ON A FREEWAY/EXPRESSWAY.
 WHEN THE LEFT LANE IS CLOSED, LEFT LANE CLOSED SIGNS SHALL BE SUBSTITUTED FOR THE RIGHT LANE CLOSED SIGNS.
 THE FIRST TWO SIGNS AND THE MESSAGE BOARD ARE STATIONARY. THE OTHER SIGNS AND ARROWBOARDS SHALL BE MOVED AS NECESSARY TO MAINTAIN THE REQUIRED DISTANCE FROM THE START OF THE LANE CLOSURE TAPER(S).

USER NAME = ronald.woodshank	DESIGNED -	REVISED -
DRAWN -	REVISOR -	REVISOR -
PLOT SCALE = 100,00' / in.	CHECKED -	REVISOR -
PLOT DATE = 5/15/2023	DATE -	REVISOR -

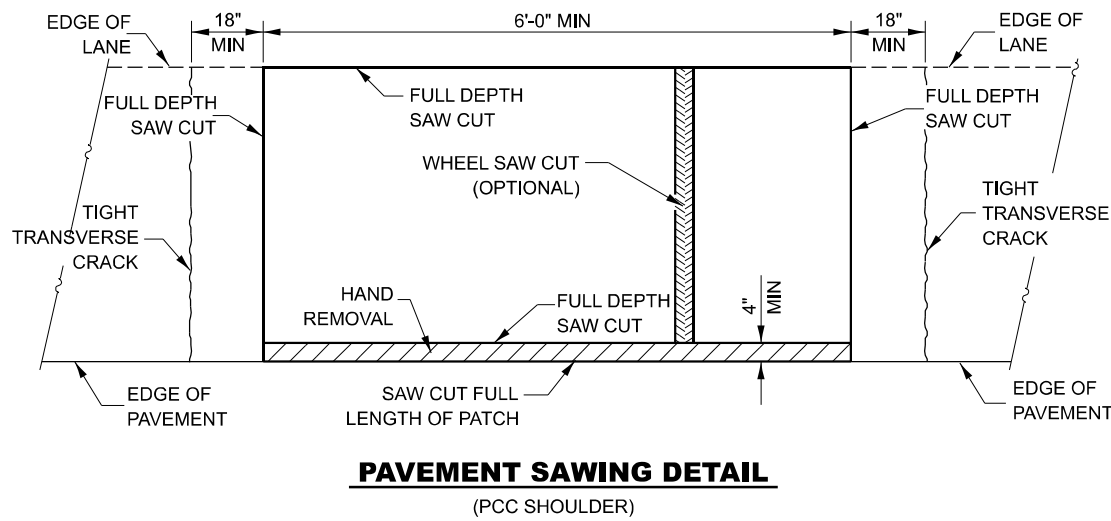
STATE OF ILLINOIS
 DEPARTMENT OF TRANSPORTATION

TRAFFIC CONTROL AND PROTECTION, STANDARD 701400
 SCALE: _____ SHEET 1 OF 1 SHEETS STA. _____ TO STA. _____

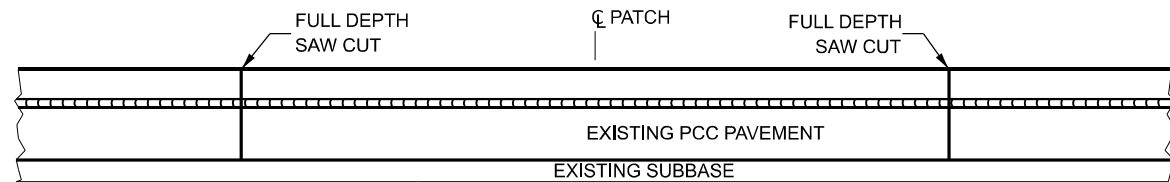
F.A.I. RTE.	SECTION	COUNTY	TOTAL SHEETS	SHEET NO.
55	(53-1,32-3)PP-1	LIV & GR	11	8
CONTRACT NO. 66N51			ILLINOIS FED. AID PROJECT	



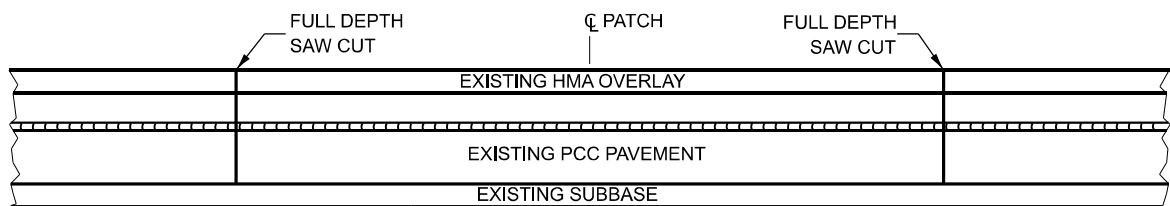
PAVEMENT SAWING DETAIL
(HMA SHOULDER)



PAVEMENT SAWING DETAIL
(PCC SHOULDER)

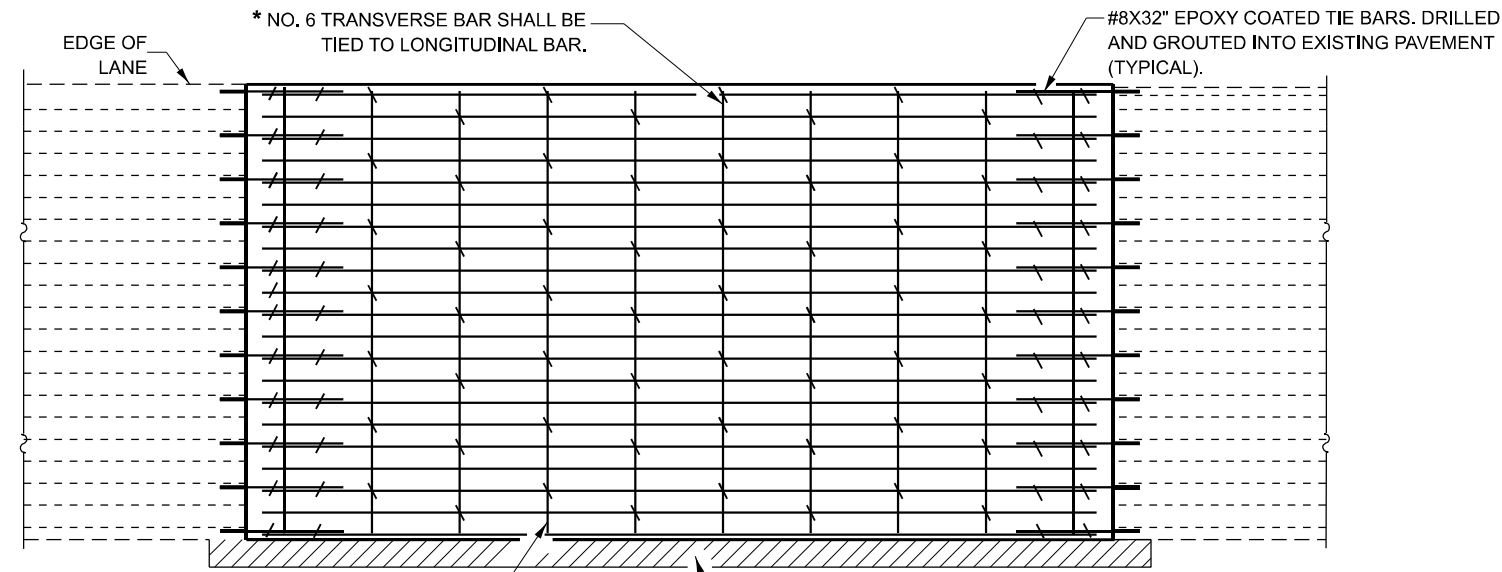


EXISTING PAVEMENT WITHOUT HMA SURFACE



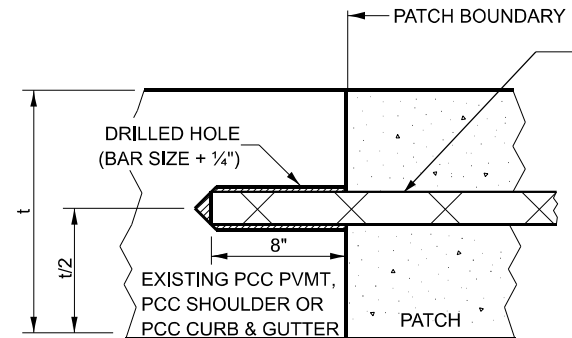
EXISTING PAVEMENT WITH HMA SURFACE

PAVEMENT SAWING DETAIL FOR CLASS A PATCHING
(CRC PAVEMENT)



PAVEMENT REINFORCEMENT DETAIL

TRANSVERSE REBAR SHALL EXTEND TO OUTER LONGITUDINAL REBAR WHILE PROVIDING A MINIMUM 3" CLEARANCE FROM EXISTING PAVEMENT EDGE



LONGITUDINAL OR TRANSVERSE CONSTRUCTION JOINTS

NOTES:
EXISTING LONGITUDINAL REINFORCEMENT BARS ARE #5 BARS AT 5" SPACING.

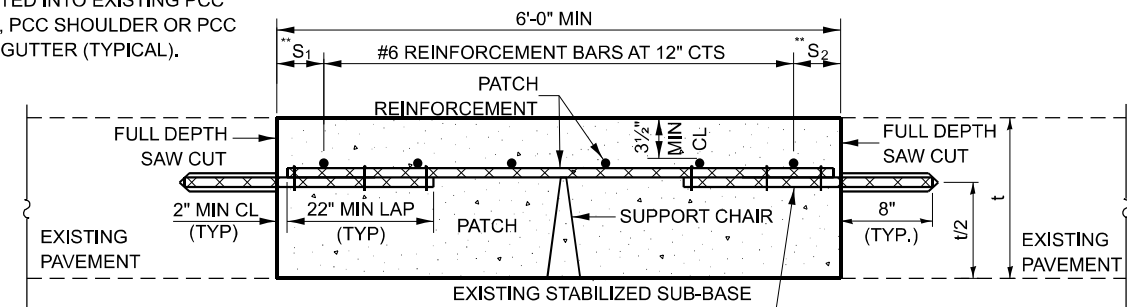
SPACING OF NEW LONGITUDINAL REINFORCEMENT SHALL MATCH SPACING OF EXISTING REINFORCEMENT AND SHALL BE TIED TOGETHER WITH A MINIMUM OF TWO TIES PER BAR.

TRANSVERS CONSTRUCTION JOINT: #8 x 32" EPOXY COATED TIE BARS SHALL BE DRILLED INTO THE EXISTING PCC PAVEMENT AT A SPACING OF ±EVERY OTHER EXISTING LONGITUDINAL REINFORCEMENT BAR AND SHALL BE TIED TOGETHER WITH A MINIMUM OF TWO TIES PER BAR.

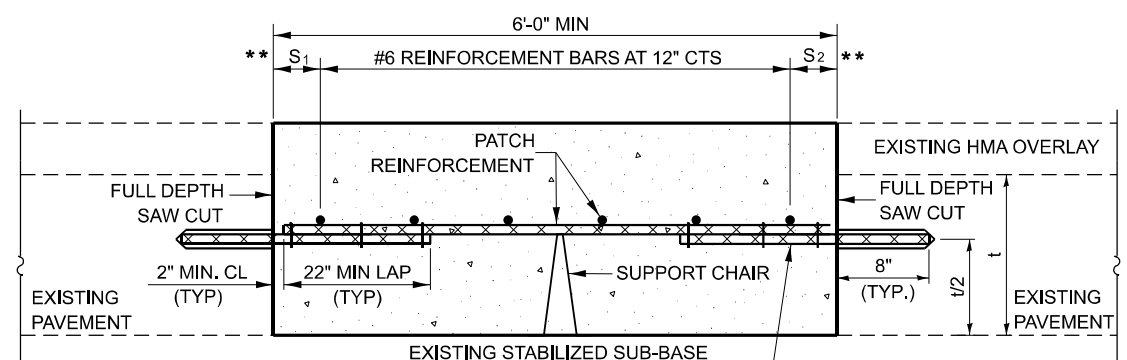
LONGITUDINAL CONSTRUCTION JOINTS: WHEN PATCHES ARE OVER 20 FOOT IN LENGTH, #6 x 24" EPOXY COATED TIE BARS SHALL BE DRILLED INTO THE EXISTING PCC PAVEMENT, PCC SHOULDER OR PCC CURB AND GUTTER AT 36" CTS.

*EVERY THIRD INTERSECTION MUST BE TIED. WHEN THE MINIMUM CLEARANCE CANNOT BE OBTAINED WITH THE TRANSVERSE REBAR ON TOP, THEN THE TRANSVERSE REBAR SHALL BE TIED TO THE BOTTOM OF THE LONGITUDINAL REBAR.

**VARIABLE: WHERE S₁ AND S₂ ARE 2½" MIN. AND 12" MAX.



WITHOUT HMA OVERLAY



WITH HMA OVERLAY

PATCHING DETAIL FOR CLASS A PATCHING
(CRC PAVEMENT)

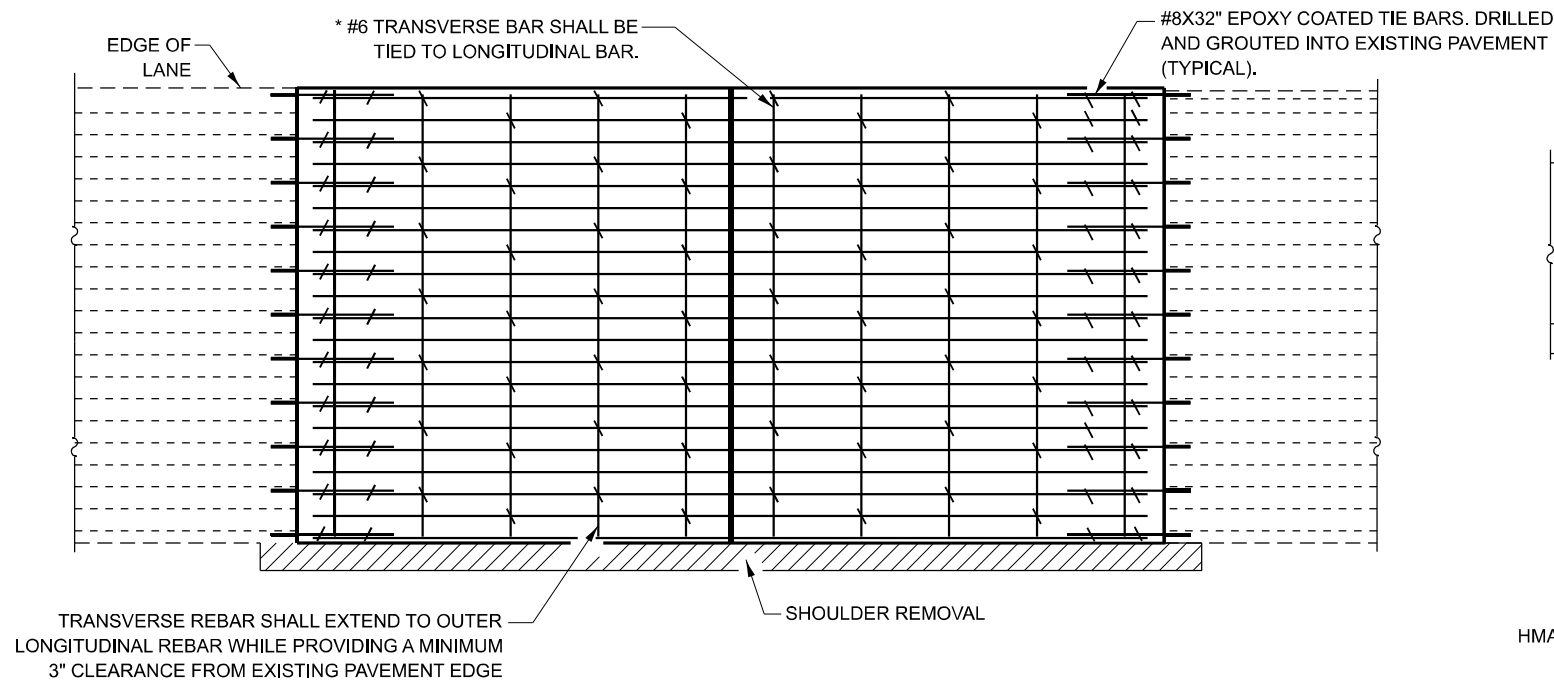
MODEL: D:\in\it\... FILE NAME: ...

USER NAME = ronald.woodshank	DESIGNED - RW	REVISED -
DRAWN - RW	REVISED -	
PLOT SCALE = 100.00' / in.	CHECKED - YP	REVISED -
PLOT DATE = 5/15/2023	DATE - 4/25/2023	REVISED -

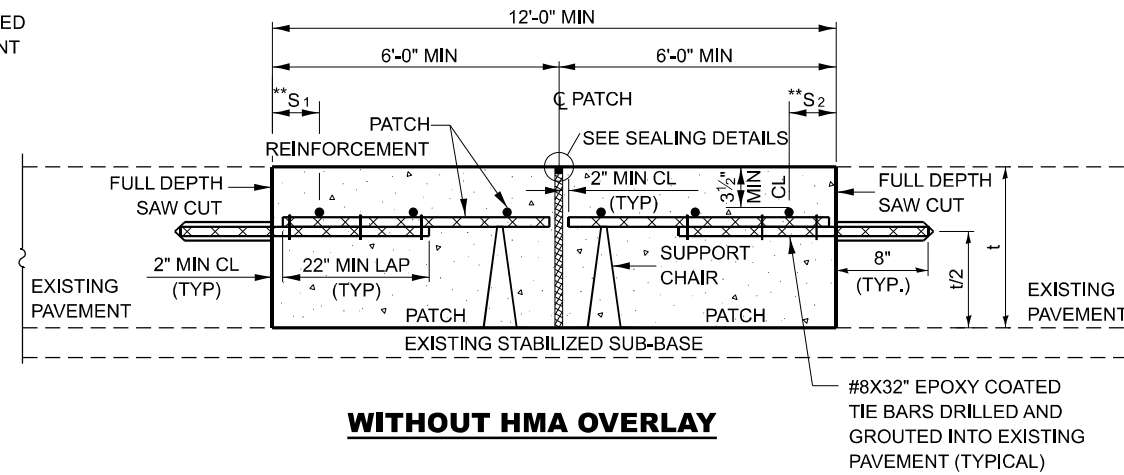
STATE OF ILLINOIS
DEPARTMENT OF TRANSPORTATION

CLASS A PATCHING DETAILS	
SCALE: _____	SHEET 1 OF 1 SHEETS STA. _____ TO STA. _____

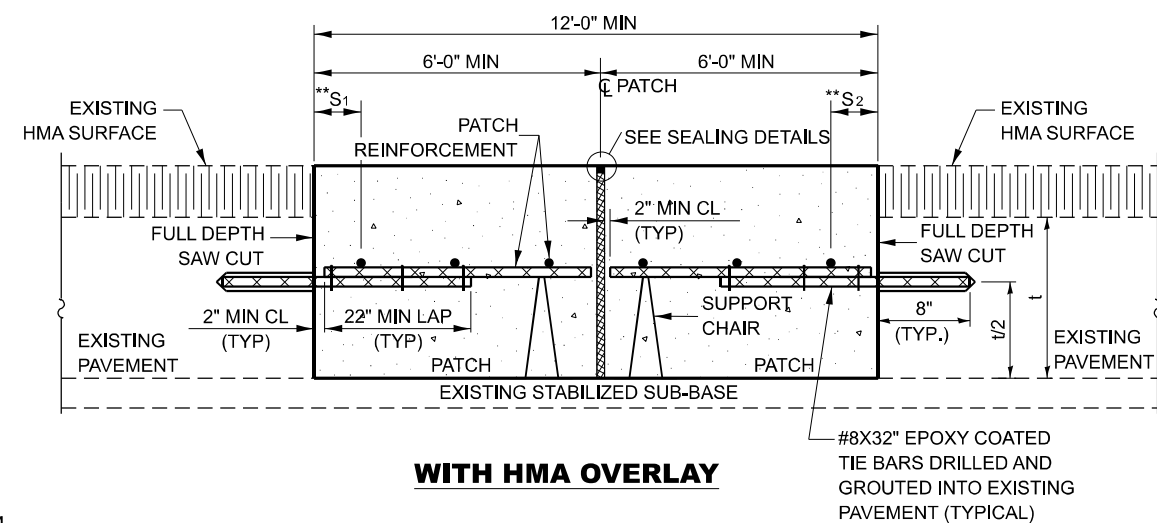
F.A.I. RTE. 55	SECTION (53-1.32-3)PP-1	COUNTY LIV & GR	TOTAL SHEETS 11	SHEET NO. 9
CONTRACT NO. 66N51				
ILLINOIS FED. AID PROJECT				



PAVEMENT REINFORCEMENT DETAIL

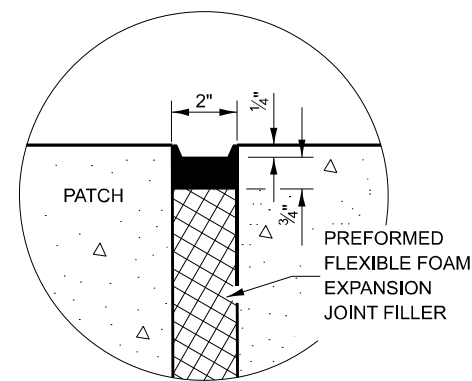


WITHOUT HMA OVERLAY

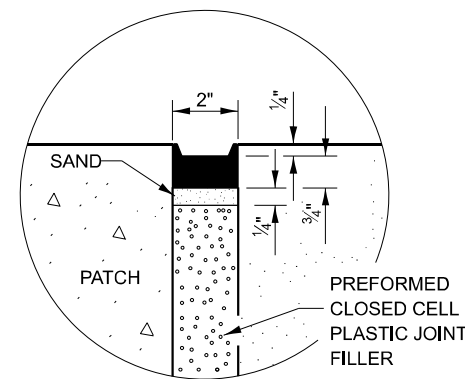


WITH HMA OVERLAY

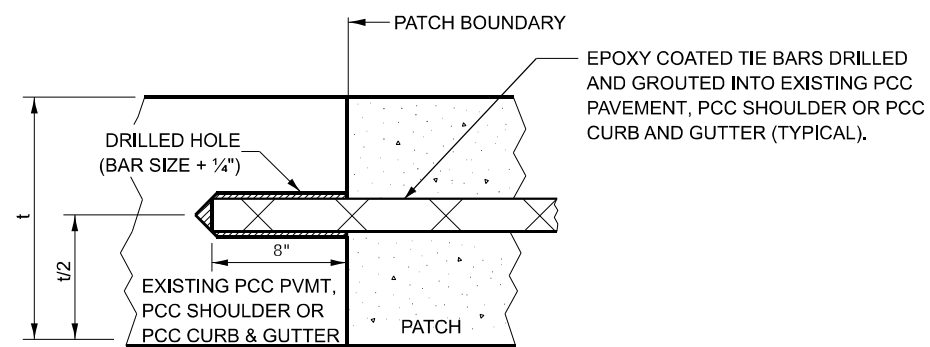
CLASS A PATCH WITH EXPANSION JOINT



SEALING DETAIL



SEALING DETAIL



LONGITUDINAL OR TRANSVERSE CONSTRUCTION JOINTS

NOTES:
EXISTING LONGITUDINAL REINFORCEMENT BARS ARE #5 BARS AT 5" SPACING.

SPACING OF NEW LONGITUDINAL REINFORCEMENT SHALL MATCH SPACING OF EXISTING REINFORCEMENT AND SHALL BE TIED TOGETHER WITH A MINIMUM OF TWO TIES PER BAR.

TRANSVERS CONSTRUCTION JOINT: #8 x 32" EPOXY COATED TIE BARS SHALL BE DRILLED INTO THE EXISTING PCC PAVEMENT AT A SPACING OF ±EVERY OTHER EXISTING LONGITUDINAL REINFORCEMENT BAR AND SHALL BE TIED TOGETHER WITH A MINIMUM OF TWO TIES PER BAR.

LONGITUDINAL CONSTRUCTION JOINTS: WHEN PATCHES ARE OVER 20 FOOT IN LENGTH, #6 x 24" EPOXY COATED TIE BARS SHALL BE DRILLED INTO THE EXISTING PCC PAVEMENT, PCC SHOULDER OR PCC CURB AND GUTTER AT 36" CTS.

* EVERY THIRD INTERSECTION MUST BE TIED, WHEN THE MINIMUM CLEARANCE CANNOT BE OBTAINED WITH THE TRANSVERSE REBAR ON TOP, THEN THE TRANSVERSE REBAR SHALL BE TIED TO THE BOTTOM OF THE LONGITUDINAL REBAR.

** VARIABLE: WHERE S₁ AND S₂ ARE 2 1/2" MIN. AND 12" MAX.

MODEL: D:\in\it... FILE NAME: ...

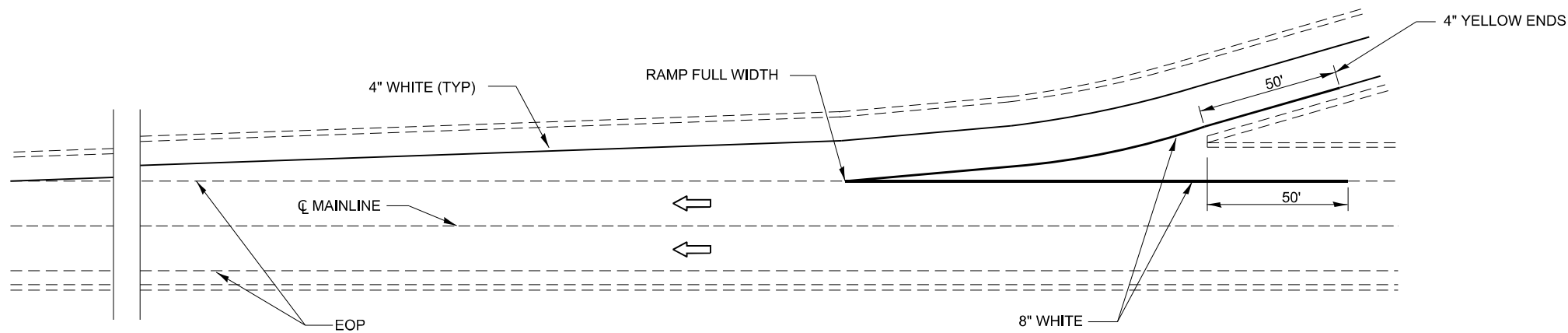
USER NAME = ronald.woodshank	DESIGNED -	REVISED -
DRAWN -	REVISOR -	
PLOT SCALE = 100.00' / in.	CHECKED -	REVISED -
PLOT DATE = 5/15/2023	DATE -	REVISED -

**STATE OF ILLINOIS
DEPARTMENT OF TRANSPORTATION**

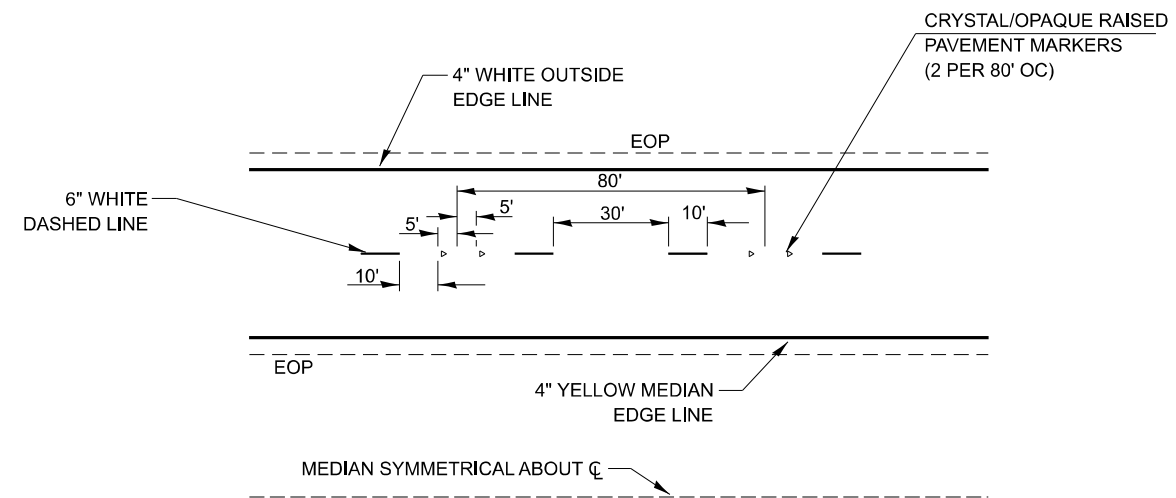
CLASS A PATCHING DETAILS

SCALE: _____ SHEET 1 OF 1 SHEETS STA. _____ TO STA. _____

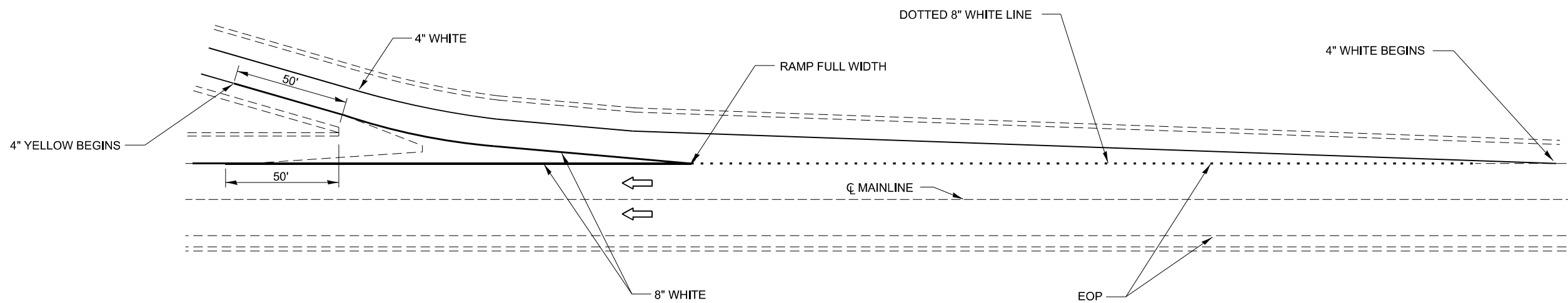
F.A.I. RTE.	SECTION	COUNTY	TOTAL SHEETS	SHEET NO.
55	(53-1,32-3)PP-1	LIV & GR	11	10
CONTRACT NO. 66N51				
ILLINOIS FED. AID PROJECT				



TYPICAL PAVEMENT MARKING FOR ENTRANCE RAMP TERMINALS



TYPICAL PAVEMENT MARKINGS



TYPICAL PAVEMENT MARKINGS FOR EXIT RAMP TERMINALS

MODEL: D:\in\it...
 FILE NAME: ...

USER NAME = ronald.woodshank	DESIGNED -	REVISED -
DRAWN -	REVISOR -	DATE -
PLOT SCALE = 100.00' / in.	CHECKED -	REVISED -
PLOT DATE = 5/15/2023	DATE -	REVISED -

**STATE OF ILLINOIS
DEPARTMENT OF TRANSPORTATION**

TYPICAL PAVEMENT STRIPPING

SCALE: _____ SHEET 1 OF 1 SHEETS STA. _____ TO STA. _____

F.A.I. RTE.	SECTION	COUNTY	TOTAL SHEETS	SHEET NO.
55	(53-1,32-3)PP-1	LIV & GR	11	11
CONTRACT NO. 66N51				
ILLINOIS FED. AID PROJECT				