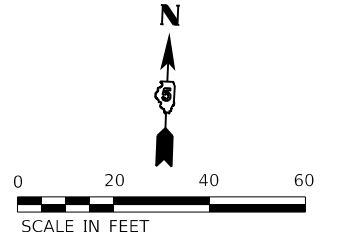
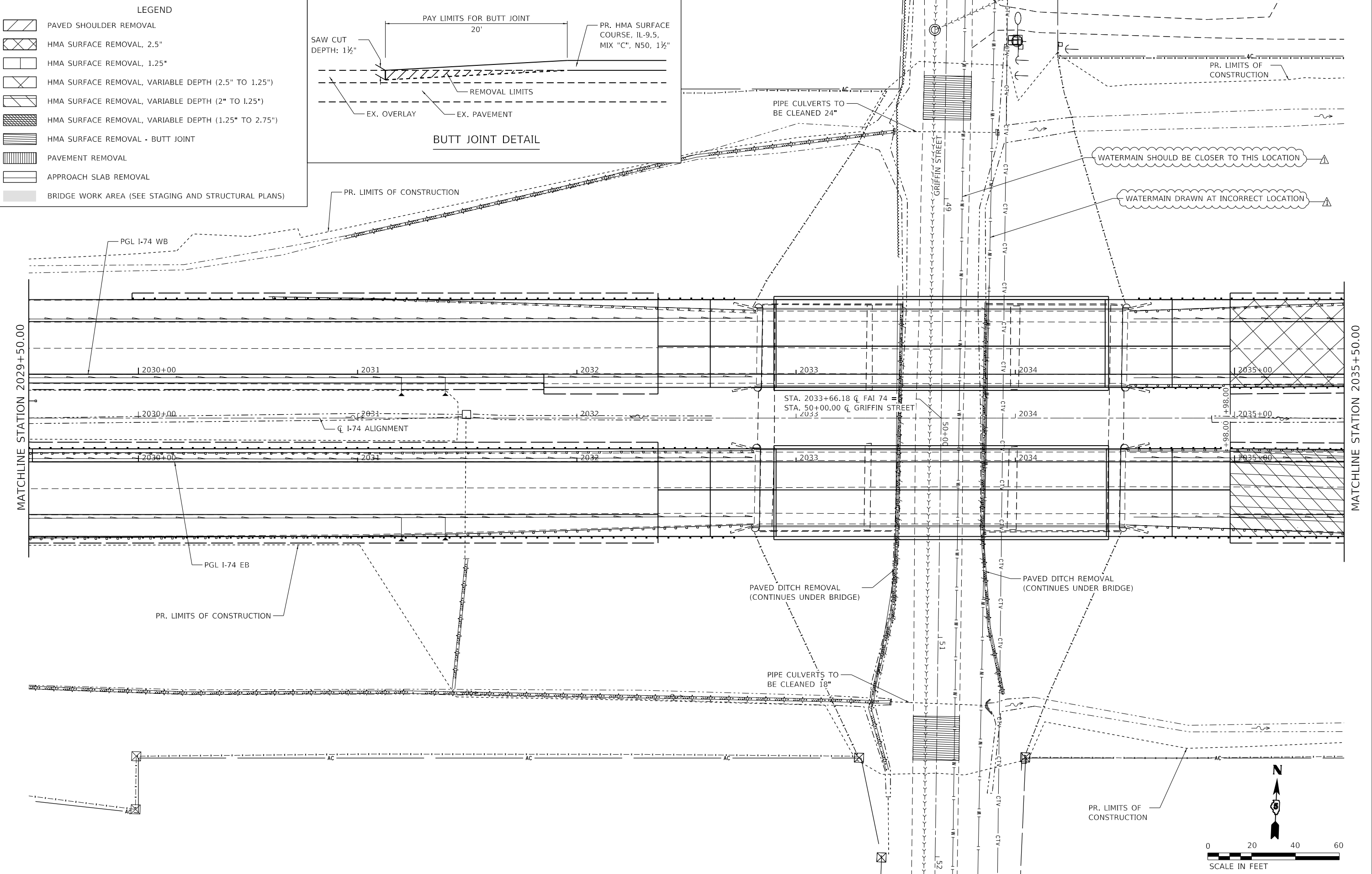
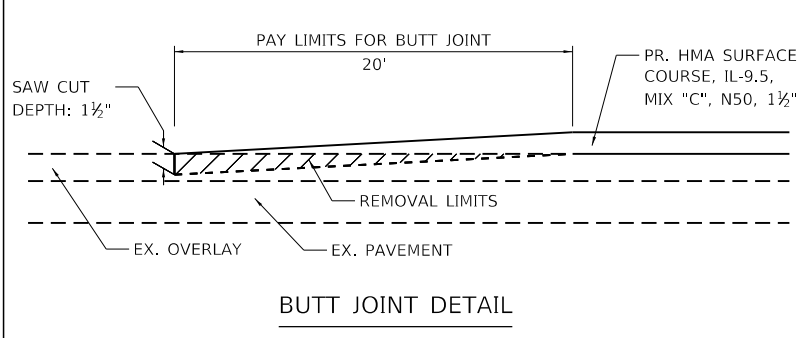


LEGEND

	PAVED SHOULDER REMOVAL
	HMA SURFACE REMOVAL, 2.5"
	HMA SURFACE REMOVAL, 1.25"
	HMA SURFACE REMOVAL, VARIABLE DEPTH (2.5" TO 1.25")
	HMA SURFACE REMOVAL, VARIABLE DEPTH (2" TO 1.25")
	HMA SURFACE REMOVAL, VARIABLE DEPTH (1.25" TO 2.75")
	HMA SURFACE REMOVAL - BUTT JOINT
	PAVEMENT REMOVAL
	APPROACH SLAB REMOVAL
	BRIDGE WORK AREA (SEE STAGING AND STRUCTURAL PLANS)



MODEL: Dwg.rvt
 FILE NAME: P:\2020\2008404_CADD - DWG\4.7_TranCAD_Sheets\05208660-Plan.dwg
 4/23/2023 10:02:00 AM

	TWM, INC. WWW.TWM-INC.COM IL DESIGN FIRM LICENSE NO: 184-001220	USER NAME = efisher PLOT SCALE = 40.0000' / in. PLOT DATE = 7/18/2023	DESIGNED - DRAWN - CHECKED - DATE -	REVISED - 07/18/2023 TWM REVISED - REVISED - REVISED -
--	---	---	--	--

**STATE OF ILLINOIS
 DEPARTMENT OF TRANSPORTATION**

ROADWAY REMOVAL PLAN STAGE 3			
SCALE: 1"=20'	SHEET 12	OF 13 SHEETS	STA. 2029+50.00 TO STA. 2035+50.00

F.A.I. RTE.	SECTION	COUNTY	TOTAL SHEETS	SHEET NO.
74	(92-12HB-4)BR-1	VERMILION	174	38
CONTRACT NO. 70860				
ILLINOIS FED. AID PROJECT				

NOTES:
 1. SEE GUARDRAIL LENGTH OF NEED SHEET FOR GUARDRAIL LAYOUT.
 2. SEE EROSION CONTROL PLAN FOR RIPRAP LAYOUT.

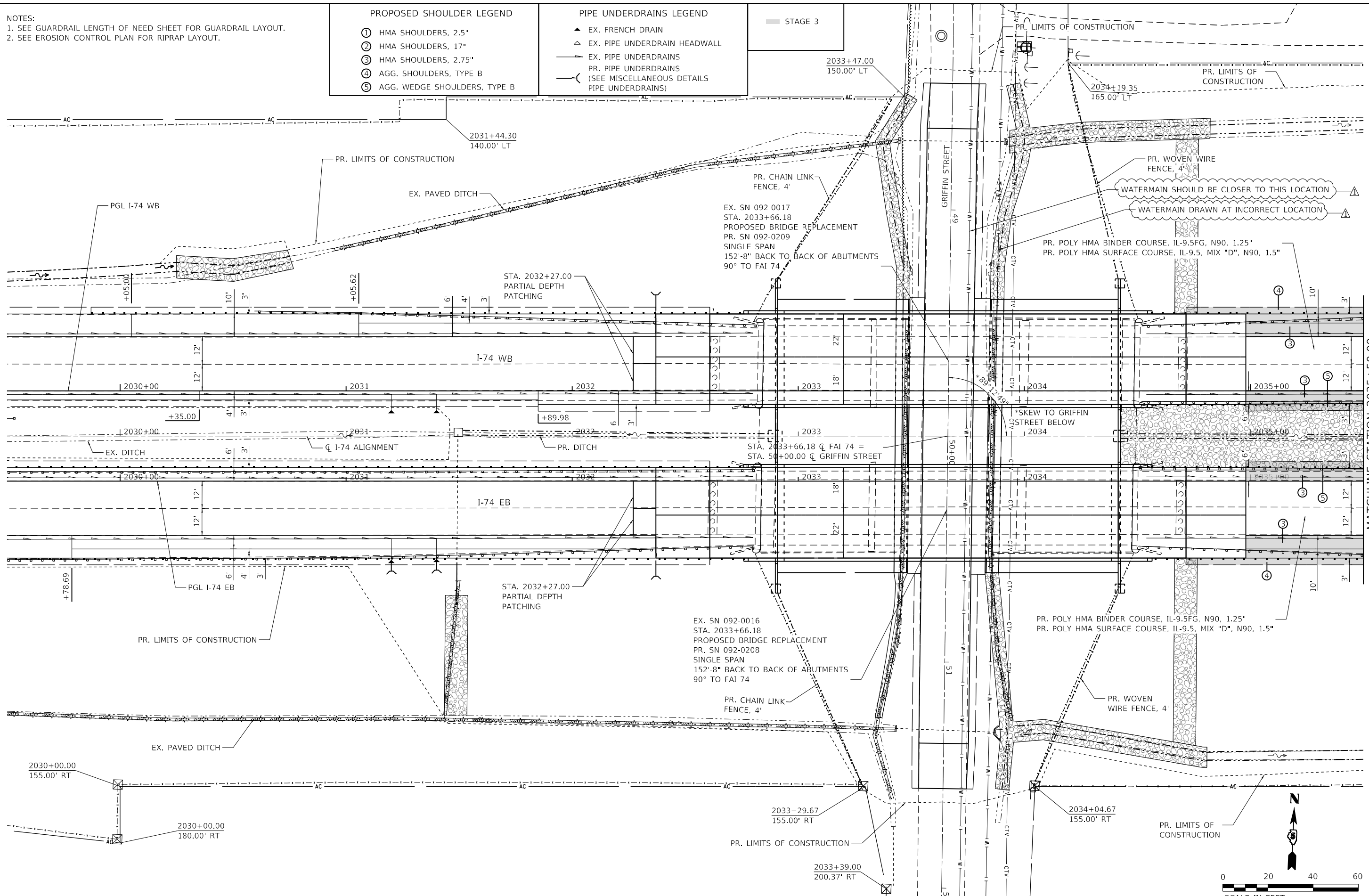
PROPOSED SHOULDER LEGEND

- ① HMA SHOULDERS, 2.5"
- ② HMA SHOULDERS, 17"
- ③ HMA SHOULDERS, 2.75"
- ④ AGG. SHOULDERS, TYPE B
- ⑤ AGG. WEDGE SHOULDERS, TYPE B

PIPE UNDERDRAINS LEGEND

- ▲ EX. FRENCH DRAIN
- △ EX. PIPE UNDERDRAIN HEADWALL
- EX. PIPE UNDERDRAINS
- PR. PIPE UNDERDRAINS (SEE MISCELLANEOUS DETAILS PIPE UNDERDRAINS)

STAGE 3



MATCHLINE STATION 2035+50.00

MODEL: Dwg4.rvt
 FILE NAME: P:\2020\2008404_CADD - DWG\4.7_TranCAD_Sheets\0520860-Plan-08.dwg



TWM, INC.
 www.twm-inc.com
 IL DESIGN FIRM
 LICENSE NO: 184-001220

USER NAME = efisher	DESIGNED -	REVISED -
	DRAWN -	REVISED -
PLOT SCALE = 40.0000" / in.	CHECKED -	REVISED -
PLOT DATE = 7/18/2023	DATE -	REVISED -

**STATE OF ILLINOIS
 DEPARTMENT OF TRANSPORTATION**

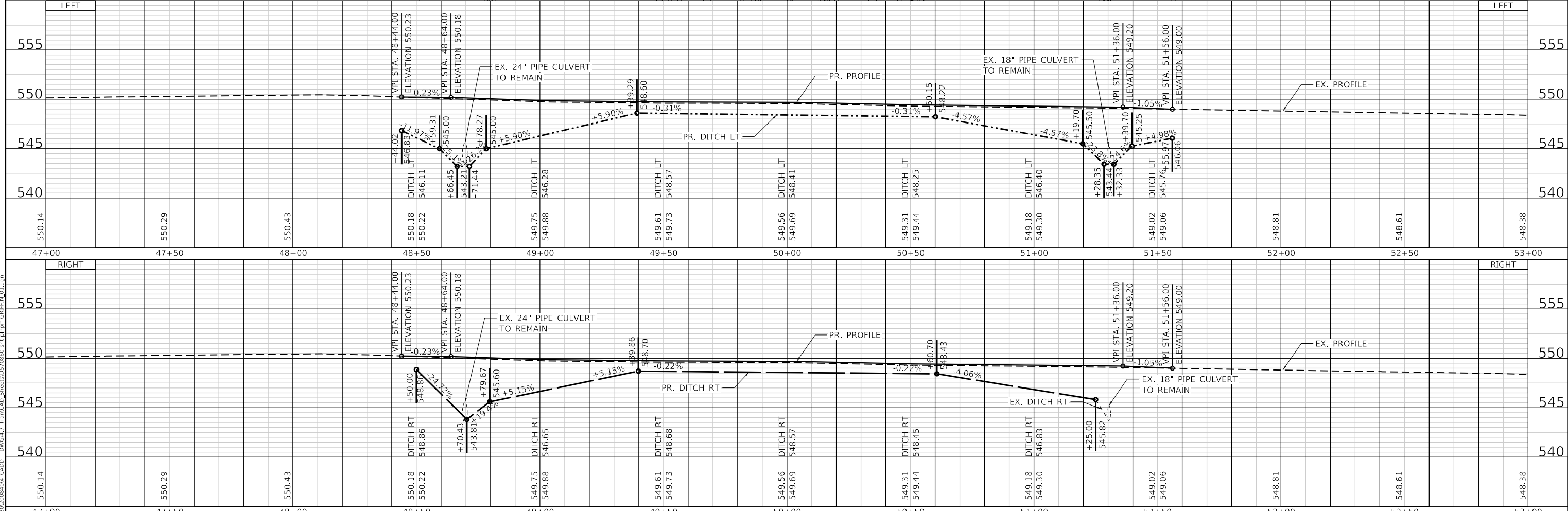
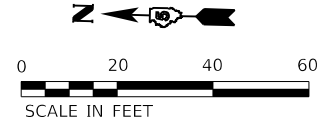
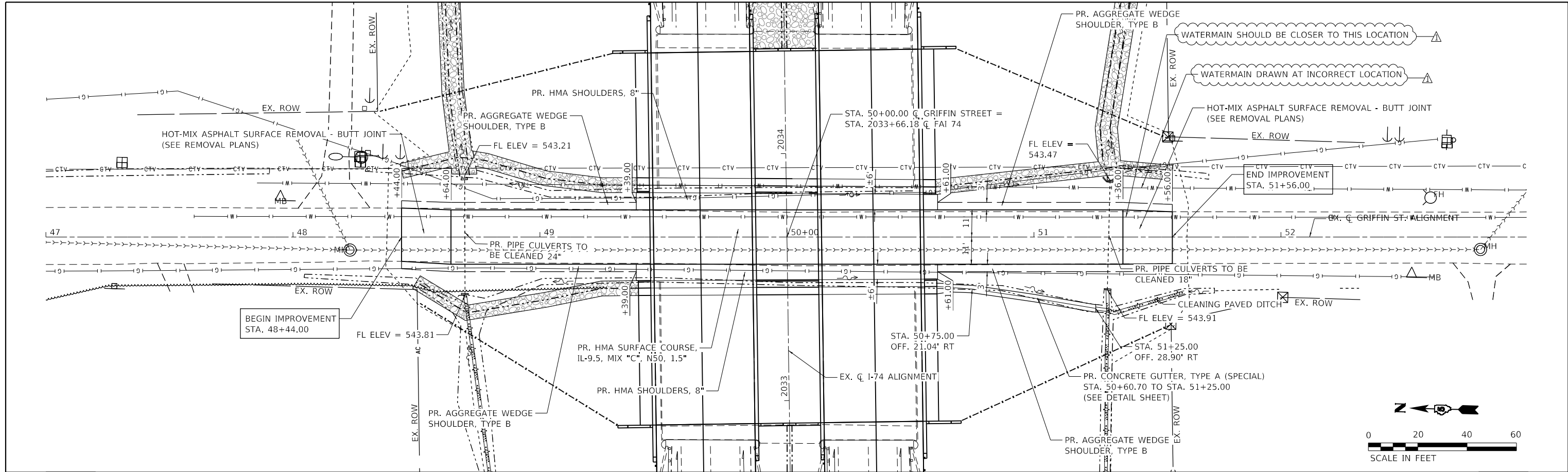
PLAN SHEET (STAGE 3)
I-74
 SCALE: 1"=20' SHEET 8 OF 9 SHEETS STA. 2029+50.00 TO STA. 2035+50.00

F.A.I. RTE.	SECTION	COUNTY	TOTAL SHEETS	SHEET NO.
74	(92-12HB-4)BR-1	VERMILION	174	47
CONTRACT NO. 70860				
ILLINOIS FED. AID PROJECT				

REV 07/18/2023

DATE	
BY	
SURVEYED	
PLOTTED	
ALIGNED	
CHECKED	
NO. _____	
NOTE BOOK	
NO. _____	
STRUCTURE	
NOTATION	
FILE NAME	
FILE NO.	

DATE	
BY	
SURVEYED	
PLOTTED	
GRADES	
CHECKED	
NO. _____	
NOTE BOOK	
NO. _____	
STRUCTURE	
NOTATION	
FILE NAME	
FILE NO.	



	USER NAME = efisher DESIGNED - DRAWN - CHECKED - DATE -	REVISED - REVISED - REVISED - REVISED -	07/18/2023 TWM	STATE OF ILLINOIS DEPARTMENT OF TRANSPORTATION	PLAN AND PROFILE GRIFFIN STREET	SCALE: 1"=20' SHEET 1 OF 1 SHEETS STA. 48+44.00 TO STA. 51+56.00	F.A.I. RTE. 74 SECTION (92-12H-4)BR-1 COUNTY VERMILION TOTAL SHEETS 174 SHEET NO. 53 CONTRACT NO. 70860 ILLINOIS FED. AID PROJECT
	MODEL: Default FILE NAME: P:\2022\0208404_CADD - DWG\4-7 Tran\CAD_Sheets\5770860-shiplinpr-griffin_01.dwg	TWM, INC. www.twm-inc.com IL DESIGN FIRM LICENSE NO: 184-001220					