

STATE OF ILLINOIS
DEPARTMENT OF TRANSPORTATION

F.A.S. RTE.	SECTION	COUNTY	TOTAL SHEETS	SHEET NO.
733	48-PP	GREENE	7	1
		ILLINOIS	CONTRACT NO. 76R82	

FOR INDEX OF SHEETS, SEE SHEET NO. 2

TRAFFIC DATA

US 67 (BEGINNING OF PROJECT PALM ST. TO CLAY ST.)

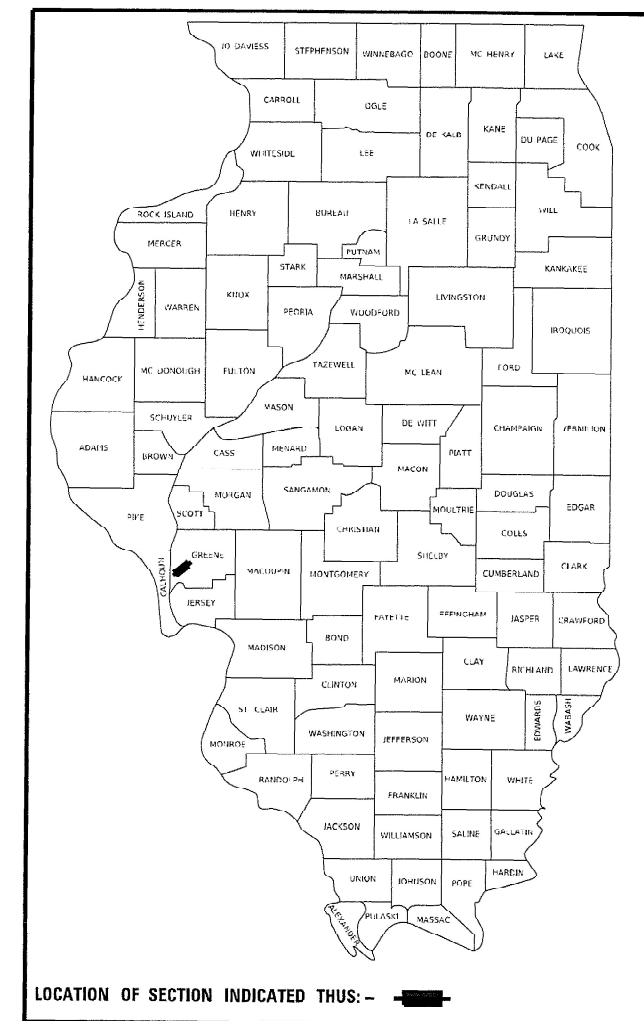
LOCATION	US 67
2023 ADT	4900 (ACTUAL)
2043 ADT	5700 (ESTIMATED)
MU%	5.2
SU%	6.2

PROPOSED HIGHWAY PLANS

FAS ROUTE 733 (US 67)
SECTION: 48-PP
PAVEMENT PATCHING
GREENE COUNTY

C-98-083-23

D-98-036-23

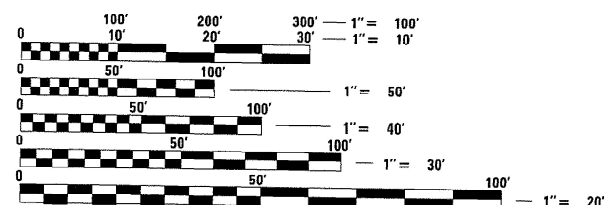


FUNCTIONAL CLASSIFICATION: OTHER PRINCIPAL ARTERIAL

END PROJECT
(PALM ST.)
M.S. 4.64
LAT: 39.484212°
LONG: -90.373158°

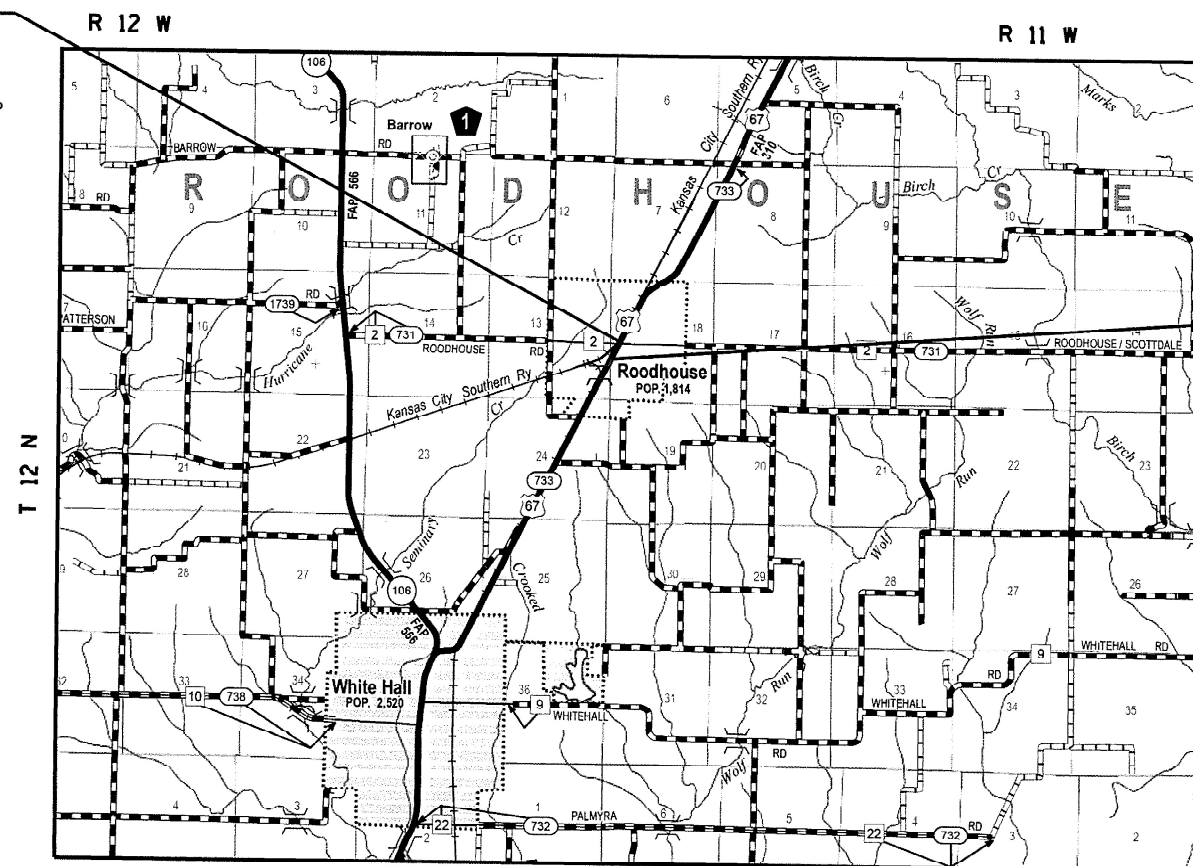


BEGIN PROJECT
(CLAY ST.)
M.S. 4.55
LAT: 39.483272°
LONG: -90.373742°



FULL SIZE PLANS HAVE BEEN PREPARED USING STANDARD ENGINEERING SCALES. REDUCED SIZED PLANS WILL NOT CONFORM TO STANDARD SCALES. IN MAKING MEASUREMENTS ON REDUCED PLANS, THE ABOVE SCALES MAY BE USED.

J.U.L.I.E.
JOINT UTILITY LOCATION INFORMATION FOR EXCAVATORS
1-800-892-0123
OR 811



1" = 1 MILE

GROSS LENGTH = 475.2 FT. = 0.09 MILE
NET LENGTH = 475.2 FT. = 0.09 MILE

PROJECT ENGINEER: BILLIE OWEN
PROJECT MANAGER: MEIWU AN

CONTRACT NO. 76R82

STATE OF ILLINOIS
DEPARTMENT OF TRANSPORTATION

SUBMITTED May 11, 2023
Kurt B. Brown
REGIONAL ENGINEER

June 30, 2023 *Steph A. Elk*
ENGINEER OF DESIGN AND ENVIRONMENT

June 30, 2023 *Steph M. J. [Signature]*
DIRECTOR OF HIGHWAYS PROJECT IMPLEMENTATION

PRINTED BY THE AUTHORITY
OF THE STATE OF ILLINOIS

INDEX OF SHEETS

- 1 COVER SHEET
- 2 INDEX OF SHEETS, HIGHWAY STANDARDS, GENERAL NOTES, & COMMITMENTS
- 3 SUMMARY OF QUANTITIES
- 4 TYPICAL SECTIONS
- 5 SCHEDULE OF QUANTITIES
- 6 DETAIL SHEET
- 7 LOCATION MAP

HIGHWAY STANDARDS

- 000001-08 STANDARD SYMBOLS, ABBREVIATIONS AND PATTERNS
- 001006 DECIMAL OF AN INCH AND OF A FOOT
- 420701-03 PAVEMENT WELDED WIRE REINFORCEMENT
- 442101-09 CLASS B PATCHES
- 701006-05 OFF-ROAD OPERATIONS, 2L, 2W, 15' TO 24" FROM PAVEMENT EDGE
- 701301-04 LANE CLOSURE, 2L, 2W, SHORT TIME OPERATIONS
- 701311-03 LANE CLOSURE, 2L, 2W, MOVING OPERATIONS DAY ONLY
- 701501-06 URBAN LANE CLOSURE, 2L, 2W, UNDIVIDED
- 701901-08 TRAFFIC CONTROL DEVICES
- 780001-05 TYPICAL PAVEMENT MARKINGS
- 781001-04 TYPICAL APPLICATIONS RAISED REFLECTIVE PAVEMENT MARKERS
- 420001-10 PAVEMENT JOINTS

GENERAL NOTES

- 4. TWO CHANGEABLE MESSAGE SIGNS SHALL BE REQUIRED FOR THIS PROJECT. THEY SHALL BE PLACED 2 WEEKS PRIOR TO ANY LANE CLOSURES. THE CHANGEABLE MESSAGE SIGNS SHALL BE PLACED ON US 67 NORTH OF PALM ST. AND SOUTH OF CLAY ST. FOR THE DURATION OF THE CONTRACT AT THE DIRECTION OF THE ENGINEER.
- 5. NO OVERNIGHT LANE CLOSURES WILL BE ALLOWED.
- 6. THE CONTRACTOR SHALL BE ALLOWED TO USE HIGH EARLY STRENGTH CONCRETE FOR THE PATCHING AS DIRECTED BY THE ENGINEER.
- 7. THE RESIDENT ENGINEER SHALL VERIFY THE EXISTING HIGHWAY LIGHTING, INTELLIGENT TRANSPORTATION SYSTEM (I.T.S.) AND/OR ELECTRICAL CABLES ASSOCIATED WITH TRAFFIC SIGNALS WITHIN THE PROJECT LIMITS. IF ANY OF THESE EXIST WITHIN THE PROJECT LIMITS, AND IF ANY OF THESE ITEMS REQUIRE LOCATING THE CONTRACTOR SHALL BE DIRECTED TO DO SO ACCORDING TO SECTION 803 OF THE STANDARD SPECIFICATIONS, THIS WORK SHALL BE PAID FOR ACCORDING TO ARTICLE 109.04 OF THE STANDARD SPECIFICATIONS.

COMMITMENTS

ALL LANES OF US 67 SHALL BE OPEN TO TRAFFIC DURING THE 2024 SOLAR ECLIPSE FROM 7:00 A.M. ON SATURDAY APRIL 6, 2024 THROUGH 10:00 P.M. ON MONDAY APRIL 8, 2024

GENERAL NOTES

- 1. UTILITIES KNOWN TO HAVE FACILITIES WITHIN THE PROJECT AREA ARE AS FOLLOWS:

	AERIAL	BURIED
FRONTIER COMMUNICATIONS (COMMUNICATIONS)	X	X
METRO (COMMUNICATIONS)	X	X
CITY OF ROODHOUSE (WATER & SANITARY SEWER)		X
CITY OF ROODHOUSE (GAS & ELECTRIC)	X	X

- 2. NO SURVEY WAS PERFORMED FOR THIS PROJECT AND THE PLANS WERE CREATED USING MICROFILM.
- 3. THE PROPOSED PAVEMENT MARKING SHALL MATCH THE LOCATIONS OF THE EXISTING PAVEMENT MARKING, AS DIRECTED BY THE ENGINEER.

REV. - MS

MODEL: Default
 FILE NAME: p:\public\dw\benley.com\p\1001\Documents\DOT_Offices\District_8\Projects\08672\CD\Drawings\08672\08672-01-01-01.dgn

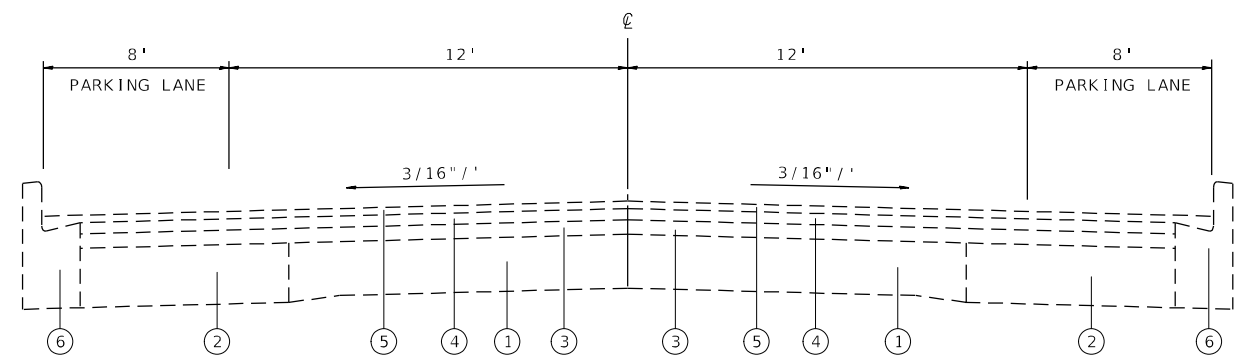
USER NAME = Rahshun.Miller	DESIGNED -	REVISED -	STATE OF ILLINOIS DEPARTMENT OF TRANSPORTATION	INDEX OF SHEETS, HIGHWAY STANDARDS, GENERAL NOTES, & COMMITMENTS	F.A.S. RTE.	SECTION	COUNTY	TOTAL SHEETS	SHEET NO.
PLOT SCALE = 100.0000' / in.	DRAWN -	REVISED -			733	48-PP	GREENE	7	2
PLOT DATE = 5/12/2023	CHECKED -	REVISED -			CONTRACT NO. 76R82				
	DATE -	REVISED -			ILLINOIS FED. AID PROJECT				
				SCALE: NTS	SHEET 1	OF 1	SHEETS	STA.	TO STA.

CODE NO.	ITEM	UNIT	TOTAL QUANTITY	CONSTR. CODE
				100% STATE US 67
				ROADWAY
				0006 RURAL
44200050	WELDED WIRE REINFORCEMENT	SQ YD	1267	1267
44201000	CLASS B PATCHES, TYPE IV, 12 INCH	SQ YD	1267	1267
44201299	DOWEL BARS 1 1/2"	EACH	640	640
44213200	SAW CUTS	FOOT	1972	1972
44213204	TIE BARS 3/4"	EACH	317	317
67000400	ENGINEER'S FIELD OFFICE, TYPE A	CAL MO	3	3
67100100	MOBILIZATION	L SUM	1	1
70102621	TRAFFIC CONTROL AND PROTECTION, STANDARD 701501	EACH	1	1
70107025	CHANGEABLE MESSAGE SIGN	CAL DA	104	104
70300100	SHORT TERM PAVEMENT MARKING	FOOT	120	120
70300150	SHORT TERM PAVEMENT MARKING REMOVAL	SQ FT	40	40
* 78001110	PAINT PAVEMENT MARKING - LINE 4"	FOOT	1070	1070
* 78100100	RAISED REFLECTIVE PAVEMENT MARKER	EACH	6	6

* SPECIALTY ITEM

MODEL: Default
 FILE: \\MAILSrv\pub\ldict-cw-beadley.com\PIV\DOT\Documents\DOT_Offices\Dir\dr. B\Project\0876872\CAD\Drawings\CAD\Sheets\0876872-48-PP-Quantities.dgn

USER NAME = Rahshun,Miller	DESIGNED -	REVISED -	STATE OF ILLINOIS DEPARTMENT OF TRANSPORTATION	SUMMARY OF QUANTITIES			F.A.S. RTE.	SECTION	COUNTY	TOTAL SHEETS	SHEET NO.
PLOT SCALE = 100,0000 ' / in.	DRAWN -	REVISED -					733	48-PP	GREENE	7	3
PLOT DATE = 5/2/2023	CHECKED -	REVISED -		SCALE: NTS	SHEET 1 OF 1 SHEETS	STA. TO STA.	CONTRACT NO. 76R82				
	DATE -	REVISED -		ILLINOIS FED. AID PROJECT							



(US 67) EXISTING TYPICAL SECTION
M.S. 4.55 TO M.S. 4.64

LEGEND

- ① EXIST. PCC PAVEMENT, 9-6-9
- ② EXIST. PCC WIDENING, 8"
- ③ EXIST. HMA SURFACE - VAR. DEPTH
- ④ EXIST. LEVELING BINDER (MM), MIX C, TY 2 - 0.75"
- ⑤ EXIST. HMA SURFACE COURSE, MIX D, CL 1, TY 2 - 1.5"
- ⑥ EXIST. CCC&G, TYPE B-6.12

MODEL: Default
 FILE: 733_48-PP_48-PP_SHEET.dwg
 PLOT DATE: 4/25/2023
 USER: rahshun.miller
 PROJECT: 733_48-PP_48-PP_SHEET.dwg

USER NAME = rahshun.miller	DESIGNED -	REVISED -
	DRAWN -	REVISED -
PLOT SCALE = 100,0000' / in.	CHECKED -	REVISED -
PLOT DATE = 4/25/2023	DATE -	REVISED -

STATE OF ILLINOIS
DEPARTMENT OF TRANSPORTATION

TYPICAL SECTION			
SCALE: NTS	SHEET 1	OF 1 SHEETS	STA. TO STA.

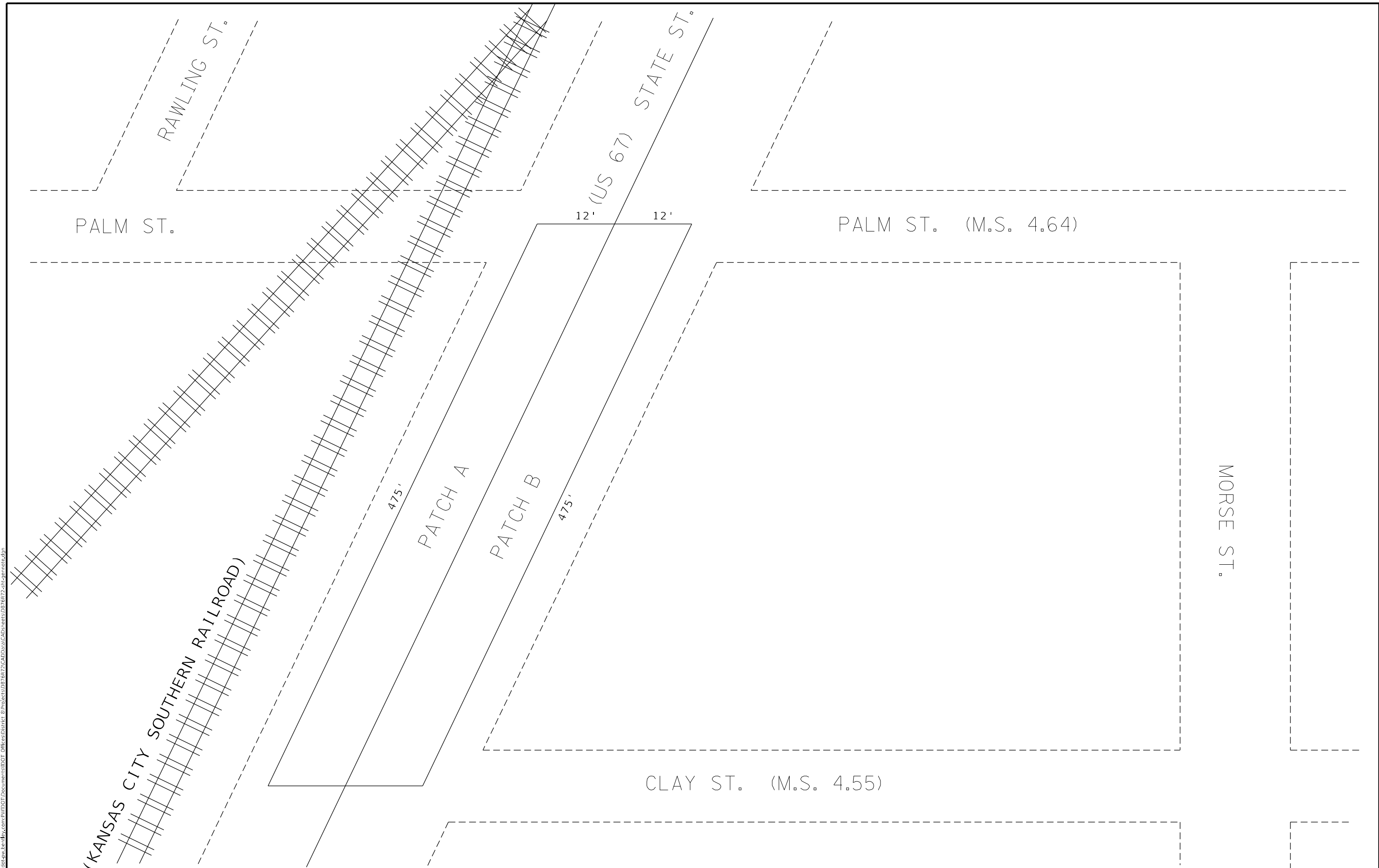
F.A.S. RTE.	SECTION	COUNTY	TOTAL SHEETS	SHEET NO.
733	48-PP	GREENE	7	4
ILLINOIS FED. AID PROJECT			CONTRACT NO. 76R82	

PAVEMENT MARKING SCHEDULE								
MILE STATION	TO	MILE STATION	LENGTH	PAINT PAVEMENT MARKING		SHORT TERM PAVEMENT MARKING (ONE LIFT)	SHORT TERM PAVEMENT MARKING REMOVAL	RAISED REFLECTIVE PAVEMENT MARKER
				4"	4"			TWO-WAY AMBER
				WHITE	YELLOW			
				SOLID	SKIP DASH			
			FOOT	FOOT	FOOT	FOOT	SQ FT	EACH
4.55	TO	4.64	475	950	120	120	40	6
SUB-TOTAL				950	120			
TOTAL				1070		120	40	6

CLASS B PATCHES 12"							
MILE STATION	LENGTH	WIDTH	TYPE IV	SAW CUTS	DOWEL	TIE	WELDED WIRE
					BARS	BARS	REINFORCEMENT
					FOOT	FOOT	SQ YD
NORTHBOUND							
4.56	475	12	633.3	986	320	158	633.3
SOUTHBOUND							
4.64	475	12	633.3	986	320	158	633.3
TOTAL :			1267	1972	640	317	1267

MODEL: P:\default
 FILE: 3\miles_pav\pavement.dwg
 USER: rahshun.miller
 PROJECT: 087682\DOT Office\Drawings\087682\CAD\Drawings\087682-48-PP-01.dwg

MODEL: Default
 FILE: NAME: p:\p\dot-cad\paw-beadfw.com\FW\DOT\Documents\DOT Office\Dir\dr. E\Project\087682\CAD\Sheet\087682-48-pp-cad-operations.dgn



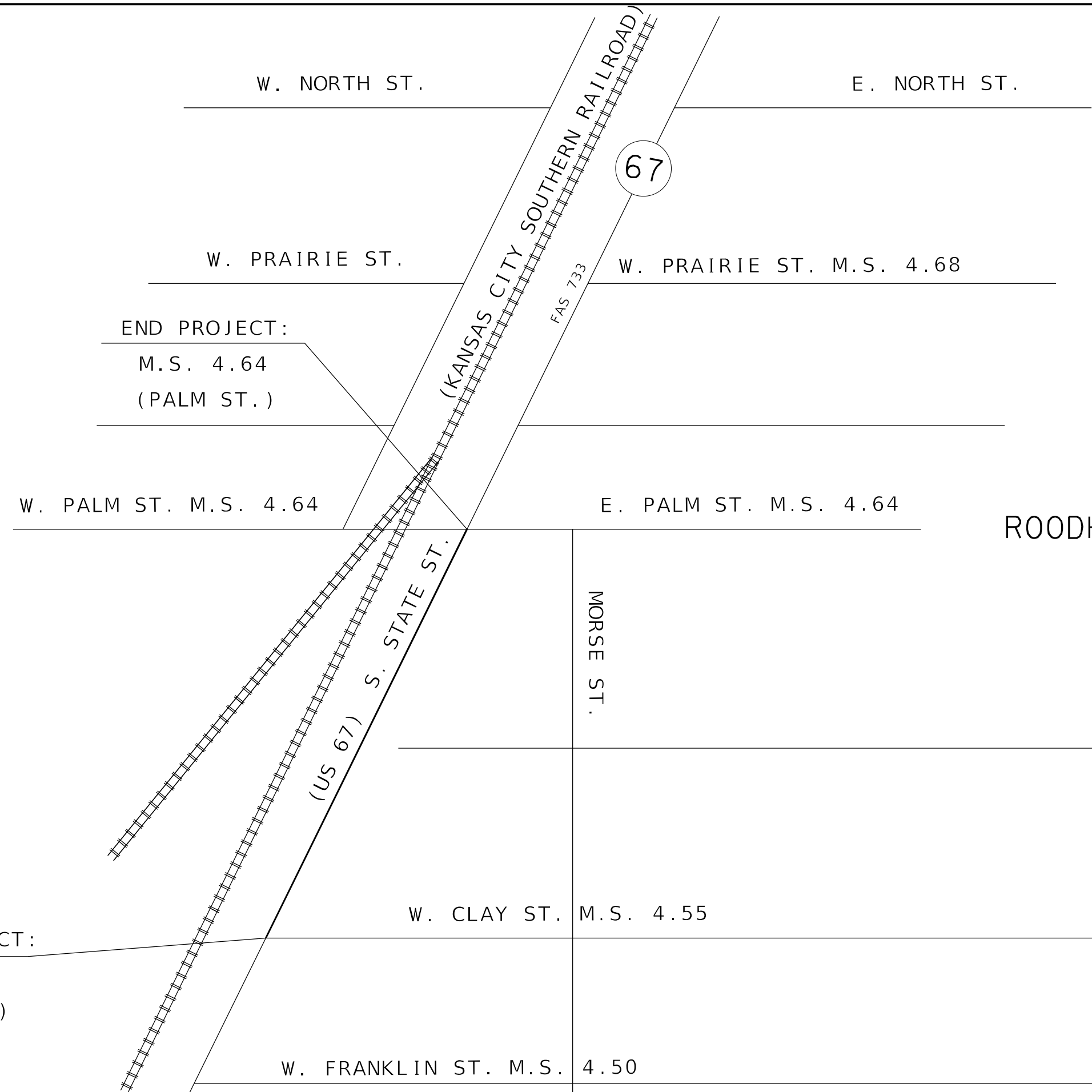
USER NAME = Rahshun, Miller	DESIGNED -	REVISED -
	DRAWN -	REVISED -
PLOT SCALE = 100,0000' / in.	CHECKED -	REVISED -
PLOT DATE = 4/23/2023	DATE -	REVISED -

**STATE OF ILLINOIS
 DEPARTMENT OF TRANSPORTATION**

DETAIL SHEET			
SCALE: NTS	SHEET 1	OF 1 SHEETS	STA. TO STA.

F.A.S. RTE. 733	SECTION 48-PP	COUNTY GREENE	TOTAL SHEETS 7	SHEET NO. 6
ILLINOIS FED. AID PROJECT				

CONTRACT NO. 76R82



END PROJECT:
M.S. 4.64
(PALM ST.)

BEGIN PROJECT:
M.S. 4.55
(CLAY ST.)

MODEL: Default
 FILE: NAME: p:\ultra-cw-bead\p\dot\Documents\DOT_office\Dir\dir_8\Project\087682\CAD\Drawings\CAD\Sheets\087682-48-PP-generals.dgn

USER NAME = Rahshun, Miller	DESIGNED -	REVISED -
	DRAWN -	REVISED -
PLOT SCALE = 100,0000' / in.	CHECKED -	REVISED -
PLOT DATE = 4/25/2023	DATE -	REVISED -

**STATE OF ILLINOIS
DEPARTMENT OF TRANSPORTATION**

LOCATION MAP	
SCALE: NTS	SHEET 1 OF 1 SHEETS STA. TO STA.

F.A.S. RTE. 733	SECTION 48-PP	COUNTY GREENE	TOTAL SHEETS 7	SHEET NO. 7
CONTRACT NO. 76R82			ILLINOIS FED. AID PROJECT	