

08-04-2023 LETTING ITEM 084

STATE OF ILLINOIS
DEPARTMENT OF TRANSPORTATION

F.A. RTE.	SECTION	COUNTY	TOTAL SHEETS
	60-(1,2) HL-1	MADISON	12 *
ILLINOIS			CONTRACT NO. 1

*12 + 1 = 13 TOTAL SHEETS
D-98-052-22

**PROPOSED
HIGHWAY PLANS**

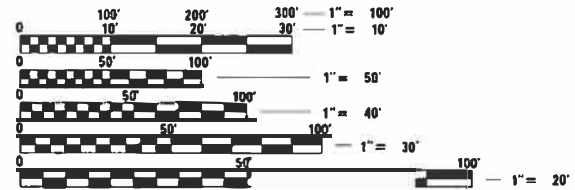
SEE INDEX OF SHEETS, SEE SHEET NO.2
FOR LIST OF HIGHWAY STANDARDS, SEE SHEET NO.2

POSTED SPEED LIMIT
I-55 = 70 MPH
IL 140 = 40 MPH
RAMPS = 50 MPH

FAI ROUTE 55 (I-55)
PROJECT NHPP-43E4(178)
SECTION: 60-(1,2) HL-1
PROJECT DESCRIPTION: HIGHWAY LIGHTING
MADISON COUNTY
C-98-082-22

	ADT (TOTAL)	(TRUCKS)	
		MU	SU
I-55	38,600 (2021)	6400	1,375 (2021)
IL-140	8,500 (2021)	1150	1,150 (2021)
NB I-55 TO IL-140	2,800 (2016)		
IL-140 TO NB I-55	2,300 (2016)		
IL-140 TO SB I-55	2,900 (2016)		
SB I-55 TO IL-140	2,300 (2016)		

MUNICIPALITY:
VILLAGE OF HAMEL

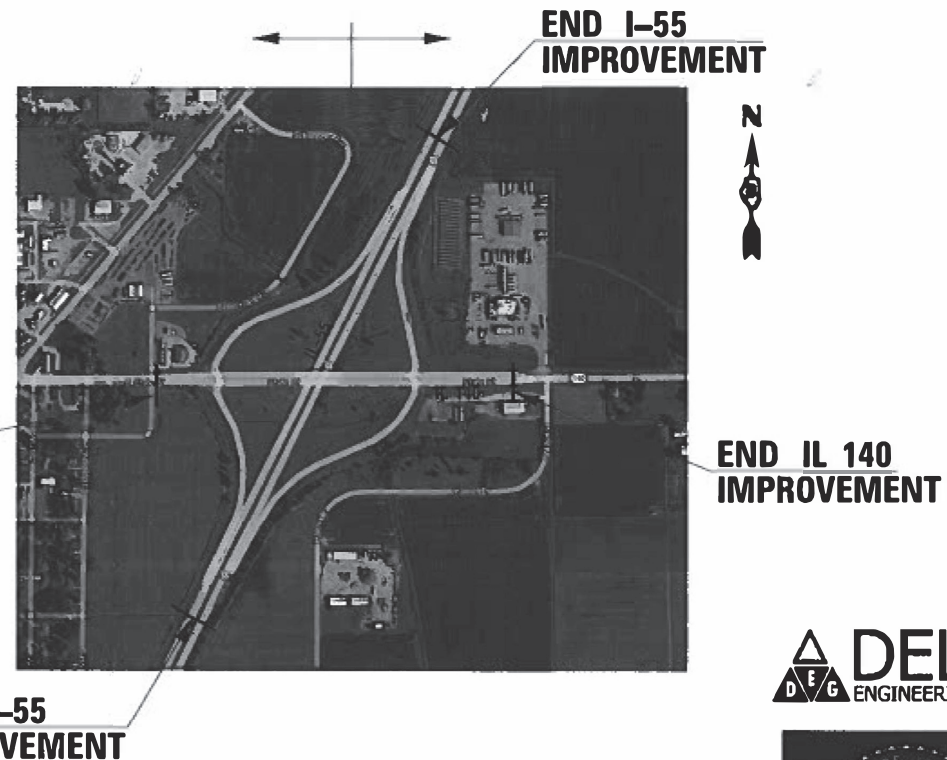


FULL SIZE PLANS HAVE BEEN PREPARED USING STANDARD ENGINEERING SCALES. REDUCED SIZED PLANS WILL NOT CONFORM TO STANDARD SCALES. IN MAKING MEASUREMENTS ON REDUCED PLANS, THE ABOVE SCALES MAY BE USED.

J.U.L.I.E.
JOINT UTILITY LOCATION INFORMATION FOR EXCAVATION
1-800-892-0123
OR 811

PROJECT ENGINEER: CHERYL KEPLAR
PROJECT MANAGER: RICHARD BARBEE

CONTRACT NO. 76R27



LOCATION MAP
NOT TO SCALE



H. Mante
LICENSE EXPIRES: 11-30-2023

STATE OF ILLINOIS
DEPARTMENT OF TRANSPORTATION

SUBMITTED *Dec 5, 22*
Richard H. Brown
REGIONAL ENGINEER

May 12, 2023 *John A. Elk*
ENGINEER OF DESIGN AND ENVIRONMENT

May 12, 2023 *Stephen M. Smith*
DIRECTOR OF HIGHWAYS PROJECT IMPLEMENTATION

PRINTED BY THE AUTHORITY
OF THE STATE OF ILLINOIS

REVISI 7-21-2023

INDEX OF SHEETS

- 1 COVER SHEET
- 2 INDEX OF SHEETS, HIGHWAY STANDARDS AND GENERAL NOTES
- 3 SUMMARY OF QUANTITIES
- 4 REMOVAL LIGHTING PLAN
- 5 PROPOSED LIGHTING PLAN
- 6 WIRING DIAGRAM AND LUMINAIRE PERFORMANCE TABLE

7 - 12A SOIL BORING LOGS



IDOT HIGHWAY STANDARDS

- 000001-08 STANDARD SYMBOLS, ABBREVIATIONS AND PATTERNS
- 701001-02 OFF-RD OPERATIONS, 2L, 2W, MORE THAN 15' AWAY
- 701006-05 OFF-RD OPERATIONS, 2L, 2W, 15' TO 24" FROM PAVEMENT EDGE
- 701101-05 OFF-RD OPERATIONS, MULTILANE, 15' TO 24" FROM PAVEMENT EDGE
- 701106-02 OFF-RD OPERATIONS, MULTILANE, MORE THAN 15' AWAY
- 701301-04 LANE CLOSURE, 2L, 2W, SHORT TIME OPERATIONS
- 701901-08 TRAFFIC CONTROL DEVICES
- 821101-02 LUMINAIRE WIRING IN POLE
- 825026-04 LIGHTING CONTROLLER BASE MOUNT 480V
- 835001-01 LIGHT TOWER
- 837001-05 LIGHT TOWER FOUNDATION
- 001006 DECIMAL OF AN INCH AND OF A FOOT
- 805001-01 ELECTRICAL SERVICE INSTALLATION DETAILS

GENERAL NOTES:

1. THIS PROJECT INCLUDES THE INSTALLATION OF A NEW LIGHTING SYSTEM ALONG THE INTERCHANGE OF I-55 AND IL-140. PROPOSED LIGHTING SHALL BE OWNED AND MAINTAINED BY THE STATE OF ILLINOIS, DEPARTMENT OF TRANSPORTATION.
2. THE CONTRACTOR SHALL CONTACT THE LOCAL ELECTRIC UTILITY COMPANY TO COORDINATE THE ELECTRIC SERVICE INSTALLATION WORK.
3. THE QUANTITIES OF RACEWAY WHERE INDICATED ON THESE PLANS ARE APPROXIMATIONS ONLY. THE CONTRACTOR SHALL FIELD VERIFY ALL LENGTHS AND SHALL INSTALL RACEWAYS IN COMPLETE COMPLIANCE WITH THE SPECIFIED REQUIREMENTS
4. THE CONTRACTOR SHALL NOTIFY J.U.L.I.E. TO LOCATE AND MARK/STAKE ALL UNDERGROUND UTILITIES.
5. THE CONTRACTOR SHALL VERIFY LOCATIONS OF UNDERGROUND/OVERHEAD UTILITIES PRIOR TO INSTALLATION OF HIGH MAST TOWER AND CONDUITS. IF THERE IS A CONFLICT WITH THE HIGH MAST TOWERS/CONDUITS AS SHOWN ON PLANS, THE CONTRACTOR SHALL SUGGEST THE ALTERNATIVE LOCATIONS AND COORDINATE WITH THE ENGINEER PRIOR TO PERFORMING CONSTRUCTION WORK
6. TRENCHES FOR LIGHTING RACEWAYS SHALL HAVE A MINIMUM DEPTH OF 30".
7. LIGHTING SYSTEM INSTALLATION SHALL CONFORM TO THE LATEST IDOT STANDARDS, NEC AND LOCAL CODES.
8. ALL ELECTRICAL EQUIPMENT AND PRODUCTS SHALL BE UL LISTED AND LABELED.
9. THE CONTRACTOR SHALL TAKE CARE WHEN INSTALLING UNIT DUCT TO AVOID CONFLICTS WITH EXISTING UNDERGROUND UTILITIES, TREES AND ROOTS. THE CONTRACTOR SHALL BE RESPONSIBLE FOR ANY DAMAGE AS DETERMINED BY THE ENGINEER.
10. THE CONTRACTOR SHALL TAKE CARE WHEN INSTALLING HIGH MAST TOWER FOUNDATIONS TO AVOID CONFLICTS WITH UNDERGROUND UTILITIES. WHEN CONFLICTS ARE ENCOUNTERED, THE CONTRACTOR SHALL REQUEST TO RELOCATE THE FOUNDATION. THE NEW LOCATION SHALL BE APPROVED BY THE ENGINEER PRIOR TO INSTALLATION.
11. GROUND RODS SHALL BE INSTALLED AT EACH TOWER.

REVISED 7-21-2023

REV. - MS

LT-01

MODEL: #MODELNAME\$
FILE NAME: \$FILE\$



USER NAME = \$USERS\$	DESIGNED - AM/HM	REVISED -
	DRAWN - AM	REVISED -
PLOT SCALE = \$SCALE\$	CHECKED - KK/HM	REVISED -
PLOT DATE = \$DATE\$	DATE - 01/31/23	REVISED -

**STATE OF ILLINOIS
DEPARTMENT OF TRANSPORTATION**

**INDEX FOR SHEETS, HIGHWAY STANDARDS AND GENERAL NOTES
I-55 AT IL 140**

SCALE: NONE SHEET 1 OF 1 SHEETS STA TO STA

F.A. RTE.	SECTION	COUNTY	TOTAL SHEETS	SHEET NO.
55	60-(1,2) HL-1	MADISON	12	2
CONTRACT NO. 76R27			ILLINOIS FED. AID PROJECT	

BRIDGE FOUNDATION BORING LOG

PROJECT _____ BRIDGE Ill. Route 140 Date March 1967
 ROUTE FAI 55 FAI 55 over Bored By Bob Ferree
 SEC. 60-1HB-5 STA. 738+55.70 Checked By R. Nebelsick
 COUNTY Madison

Boring No. 4 (Cont.)
 Station 867+29
 Offset 62.3' Rt. E.

Elevation	N	Qu t/s.f.	w (%)	Surface Water El.	Elevation	N	Qu t/s.f.	w (%)
Ground Surface								
					-65			
					-45			
COARSE GRAY SANDY GRAVEL								
497.8	Dense	42	-					
END OF BORING					-70			
					-50			
					-75			
					-55			
					-80			
					-60			
					-85			

N - Standard Penetration Test - Blows per foot to drive 2" O.D. Split Spoon Sampler 12" with 140# hammer falling 30".

Qu - Unconfined Compressive Strength - t/sf
 w - Water Content - percentage of oven dry weight - %

Type failure:
 B - Bulge Failure
 S - Shear Failure
 E - Estimated Value

BRIDGE FOUNDATION BORING LOG

PROJECT _____ BRIDGE Ill. Route 140 Date March 1967
 ROUTE FAI 55 FAI 55 over Bored By Bob Ferree
 SEC. 60-1HB-5 STA. 738+55.70 Checked By R. Nebelsick
 COUNTY Madison

Boring No. 4 (W. Abut.)
 Station 867+29
 Offset 62.3 Rt. E.

Elevation	N	Qu t/s.f.	w (%)	Surface Water El.	Elevation	N	Qu t/s.f.	w (%)
Ground Surface								
544.3								
BLACK ORGANIC SILTY CLAY LOAM								
					-25			
Medium		6	1.0B	21				
MOTTLED BROWN AND GRAY CLAY					-5			
Stiff		6	1.1B	26				
SAND LAYER								
					-30			
Stiff		6	1.1B	25				
GRAY CLAY TILL								
					-10			
Stiff		6	1.1B	25				
BROWN CLAY LOAM								
					-35			
Stiff		7	1.3B	21				
BROWN CLAY LOAM								
					-15			
Soft		4	0.3B	22				
BROWN CLAY LOAM								
					-40			
Stiff		11	1.4B	14				
BROWN CLAY LOAM								
					-20			
Hard		38	7.2S	11				
					-45			

N - Standard Penetration Test - Blows per foot to drive 2" O.D. Split Spoon Sampler 12" with 140# hammer falling 30".

Qu - Unconfined Compressive Strength - t/sf
 w - Water Content - percentage of oven dry weight - %

Type failure:
 B - Bulge Failure
 S - Shear Failure
 E - Estimated Value

REVISOR'S MARK: **REVISOR'S MARK** REVISED SHEET 7-21-2023

SBL-04

MODEL: D:\delt\... FILE NAME: G:\11025A.W01.155 AT IL-140... SHEET: 07 OF 10



USER NAME = amassey	DESIGNED - AM/HM	REVISED -
PLOT SCALE = 100.0000' / in.	CHECKED - KK/HM	REVISED -
PLOT DATE = 7/20/2023	DATE - 01/31/23	REVISED -

STATE OF ILLINOIS
 DEPARTMENT OF TRANSPORTATION

SOIL BORING LOGS

SCALE: NONE SHEET 1 OF 1 SHEETS STA. TO STA.

F.A. RTE.	SECTION	COUNTY	TOTAL SHEETS	SHEET NO.
55	60-(1,2) HL-1	MADISON	13	10
CONTRACT NO. 76R27			ILLINOIS FED. AID PROJECT	

BRIDGE FOUNDATION BORING LOG

PROJECT _____ BRIDGE Ill. Route 140 Date March 15, 1967
 ROUTE FAI 55 Bored By Bob Ferree
 SEC. 60-1HB-5 STA. 738+55.70 Checked By R. Nebelsick
 COUNTY Madison

Elevation	N	Qu t/s.f.	w (%)	Surface Water El.	Elevation	N	Qu t/s.f.	w (%)
Ground Surface								
					-65			
					-45			
496.9	Hard	22	7.8S	17				
END OF BORING					-70			
					-50			
					-75			
					-55			
					-80			
					-60			
					-85			

N - Standard Penetration Test - Blows per foot to drive 2" O.D. Split Spoon Sampler 12" with 140# hammer falling 30".

Qu - Unconfined Compressive Strength - t/sf

w - Water Content - percentage of oven dry weight - %

Type failure:
 B - Bulge Failure
 S - Shear Failure
 E - Estimated Value
 P - Penetration

BRIDGE FOUNDATION BORING LOG

PROJECT _____ BRIDGE Ill. Route 140 Date March 15, 1967
 ROUTE FAI 55 Bored By Bob Ferree
 SEC. 60-1HB-5 STA. 738+55.70 Checked By R. Nebelsick
 COUNTY Madison

Elevation	N	Qu t/s.f.	w (%)	Surface Water El.	Elevation	N	Qu t/s.f.	w (%)
Ground Surface								
543.4	0							
BLACK ORGANIC SILTY CLAY IQAM	Hard	34	5.2S	10	-25			
	Hard	41	6.0S	9				
	Hard	38	6.0S	14	-30			
MOTTLED BROWN AND GRAY CLAY	Stiff	9	1.6B	25				
	Stiff	7	1.3B	23	-10			
GRAY CLAY LOAM	Stiff	6	1.1B	26				
	Soft	4	0.4B	32	-15			
BROWN CLAY LOAM	Soft	4	0.3B	25				
	V. Loose	4	-	-	-20			
BROWN COARSE SAND WITH PEBBLES	Hard	29	5.4S	11				
	Hard	24	7.7S	10	-45			

N - Standard Penetration Test - Blows per foot to drive 2" O.D. Split Spoon Sampler 12" with 140# hammer falling 30".

Qu - Unconfined Compressive Strength - t/sf

w - Water Content - percentage of oven dry weight - %

Type failure:
 B - Bulge Failure
 S - Shear Failure
 E - Estimated Value

REVISOR'S MARK: Δ REVISED SHEET 7-21-2023

MODEL: D:\delt\... FILE NAME: G:\P11025A.W01.155 AT IL-140 LIGHTING\02A_Draft\01_CADD\02_Sheet\076827-4-1c-bor-005.dgn



USER NAME = amassey	DESIGNED - AM/HM	REVISED -
PLOT SCALE = 100,0000' / in.	CHECKED - KK/HM	REVISED -
PLOT DATE = 7/20/2023	DATE - 01/31/23	REVISED -

STATE OF ILLINOIS
 DEPARTMENT OF TRANSPORTATION

SOIL BORING LOGS

SCALE: NONE SHEET 1 OF 1 SHEETS STA. TO STA.

F.A. RTE.	SECTION	COUNTY	TOTAL SHEETS	SHEET NO.
55	60-(1,2) HL-1	MADISON	13	11
ILLINOIS FED. AID PROJECT			CONTRACT NO. 76R27	

SBL-05

