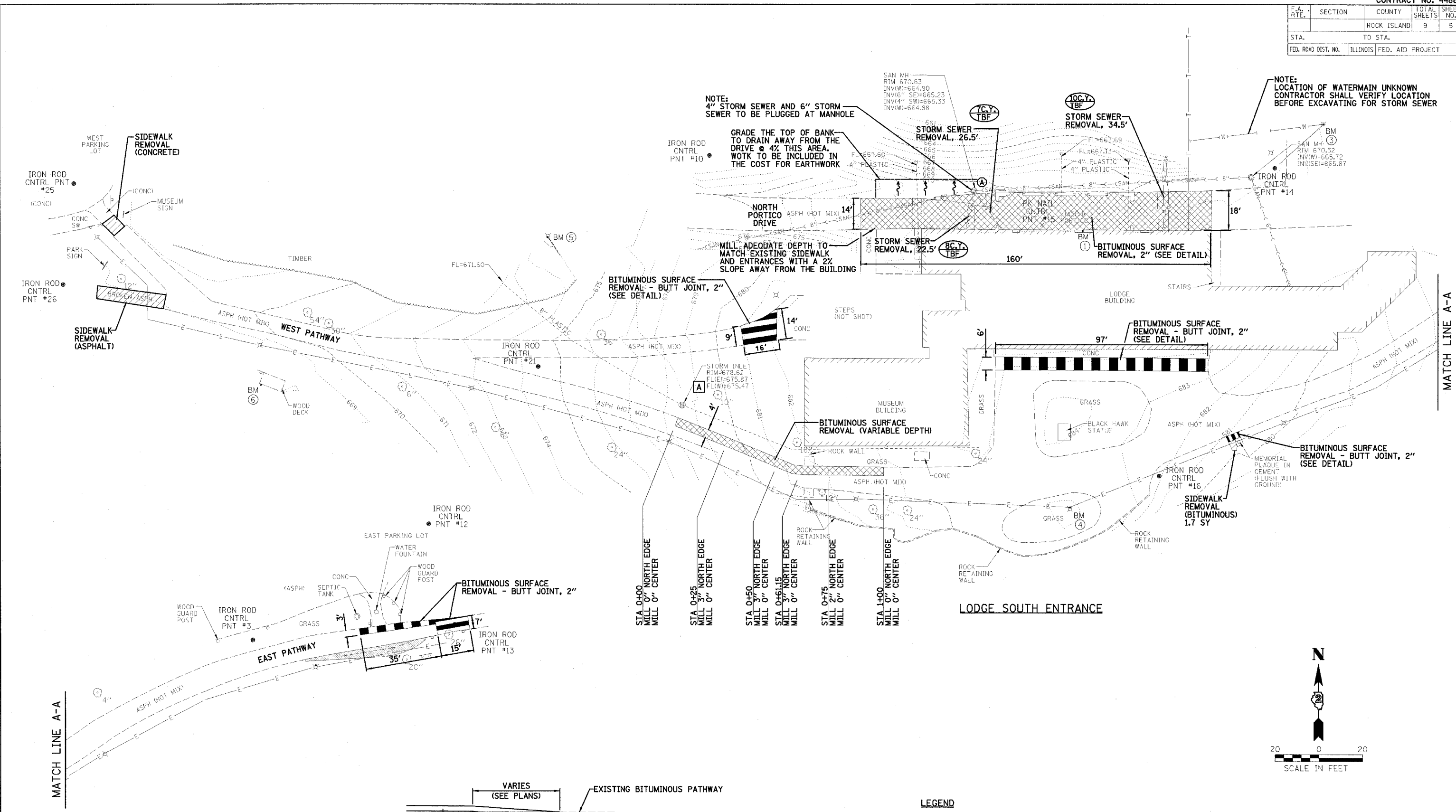


F.A. RTE.	SECTION	COUNTY	TOTAL SHEETS	SHEET NO.
		ROCK ISLAND	9	5
STA.	TO STA.			
FED. ROAD DIST. NO. ILLINOIS FED. AID PROJECT				

NOTE:
4" STORM SEWER AND 6" STORM SEWER TO BE PLUGGED AT MANHOLE

NOTE:
GRADE THE TOP OF BANK TO DRAIN AWAY FROM THE DRIVE @ 4% THIS AREA. WOKT TO BE INCLUDED IN THE COST FOR EARTHWORK

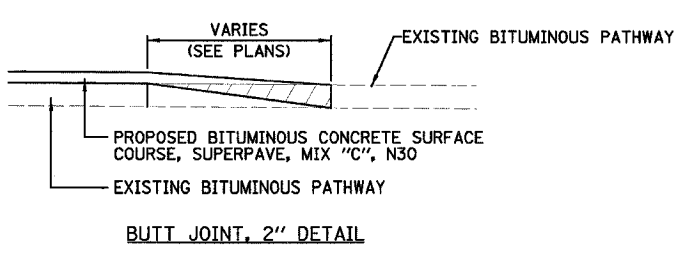
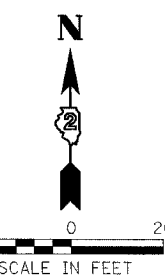
NOTE:
LOCATION OF WATERMAIN UNKNOWN CONTRACTOR SHALL VERIFY LOCATION BEFORE EXCAVATING FOR STORM SEWER



BITUMINOUS SURFACE REMOVAL - BUTT JOINT, 2" (SEE DETAIL)

BITUMINOUS SURFACE REMOVAL (VARIABLE DEPTH)

BITUMINOUS SURFACE REMOVAL - BUTT JOINT, 2"



LEGEND

(TC.Y) TBF AMOUNT OF TRENCH BACKFILL

(Hatched Box) BITUMINOUS OR CONCRETE TO BE REMOVED

REVISIONS	
NAME	DATE

ILLINOIS DEPARTMENT OF TRANSPORTATION

REMOVAL PLAN

IDOT / IHPA

BLACK HAWK STATE HISTORIC SITE

SCALE: VERT. DATE HORIZ. DRAWN BY CHECKED BY

DESIGNED BY LAW	FILE NO. 24-7524
DRAWN BY DRR	DATE 5/02/05
CHECKED BY PJM	SHEET NO. 5 OF 9

Farnsworth GROUP
2709 McGraw Drive
Bloomington, Illinois 61704
309/663-8435, 309/893-1571 fax

PLOT DATE = #DATE#
FILE NAME = #FILE#
PLOT SCALE = #SCALE#
USER NAME = #USER#