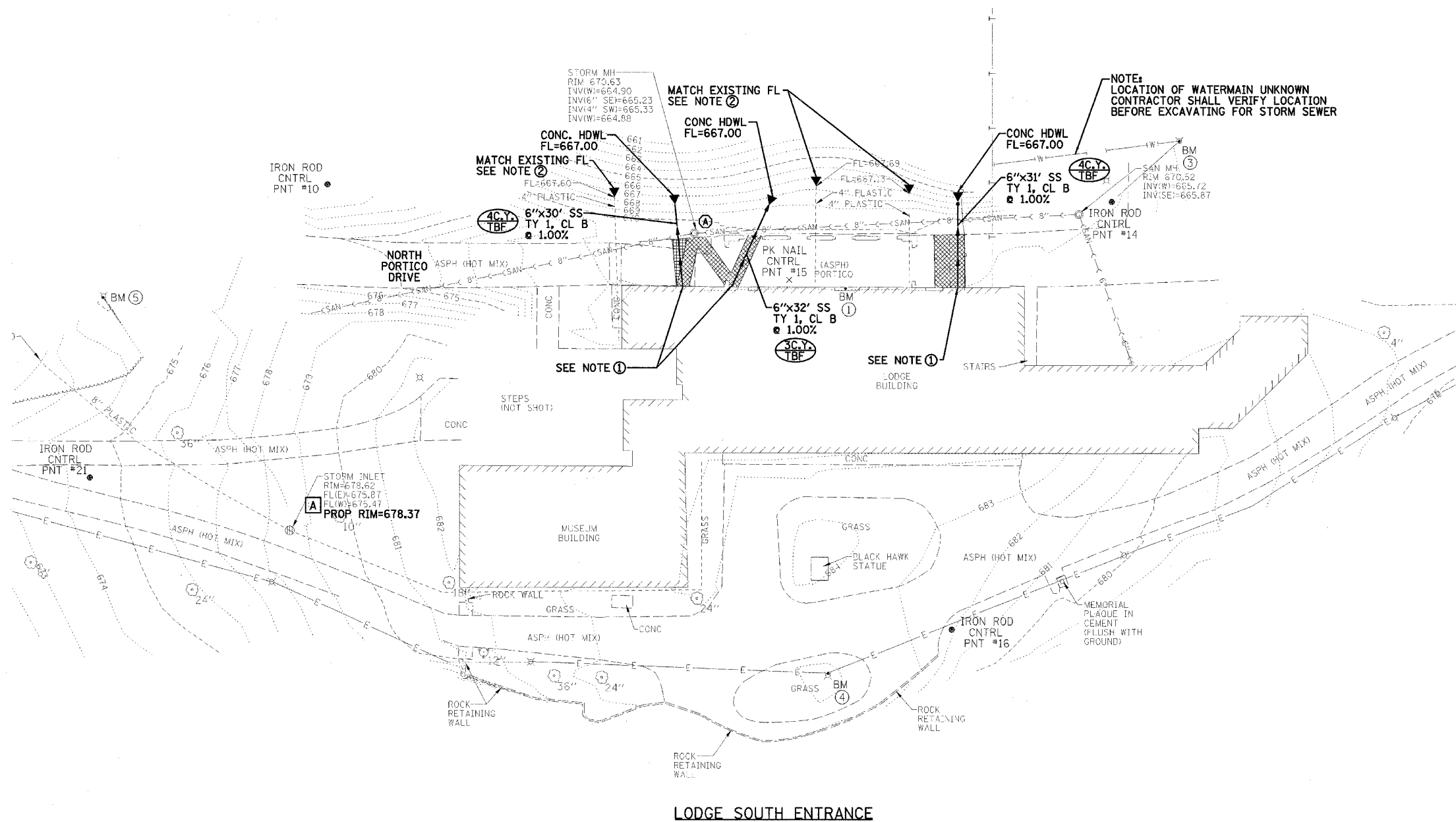


F.A. RTE.	SECTION	COUNTY	TOTAL SHEETS	SHEET NO.
		ROCK ISLAND	9	7
STA.		TO STA.		
FED. ROAD DIST. NO.		ILLINOIS FED. AID PROJECT		



LODGE SOUTH ENTRANCE

- NOTES:
- ① DOWNSPOUT CONNECTION DETAILS TO BE PROVIDED BY ILLINOIS HISTORICAL PRESERVATION AGENCY. THE SCUPPERS ARE TO BE ATTACHED TO THE PROPOSED STORM SEWERS AND THE EXISTING DOWNSPOUT DRAINS IN THREE (3) PLACES. CONNECTION ELEV.=671.3
  - ② CONTRACTOR IS TO CONNECT THE EXISTING 4" PIPE UNDERDRAINS FOR THE DOWNSPOUTS, 3 PLACES, WITH PROPOSED CONCRETE HEADWALL FOR PIPE DRAINS.
  - ③ ▼ - PROPOSED CONCRETE HEADWALL FOR PIPE DRAINS.
  - ④ AMOUNT OF TRENCH BACKFILL

REVISIONS	
NAME	DATE

ILLINOIS DEPARTMENT OF TRANSPORTATION  
 DRAINAGE PLAN  
 IDOT / IHPA  
 BLACK HAWK STATE HISTORIC SITE

SCALE: VERT. \_\_\_\_\_  
 HORIZ. \_\_\_\_\_  
 DATE \_\_\_\_\_

DRAWN BY \_\_\_\_\_  
 CHECKED BY \_\_\_\_\_

DESIGNED BY <b>LAW</b>	 2709 McGraw Drive Bloomington, Illinois 61704 309/663-8495, 309/663-1571 fax	FILE NO. 24-7524
DRAWN BY <b>DRR</b>		DATE 5/02/05
CHECKED BY <b>PJM</b>		SHEET NO. 7 OF 9

PLOT DATE = #DATE#  
 FILE NAME = #FILE#  
 PLOT SCALE = #SCALE#  
 USER NAME = #USER#