

F.A. RTE.	SECTION	COUNTY	TOTAL SHEETS	SHEET NO.
		ROCK ISLAND	9	1

STATE OF ILLINOIS
DEPARTMENT OF TRANSPORTATION
DIVISION OF HIGHWAYS

IDOT /IHPA STATEWIDE BLACK HAWK STATE HISTORICAL SITE

SECTION **PARK ROAD** IMPROVEMENTS
ROCK ISLAND COUNTY
JOB NO. C-30-020-05
ROUTE PARKROADS (BLACK HAWK)

INDEX OF SHEETS

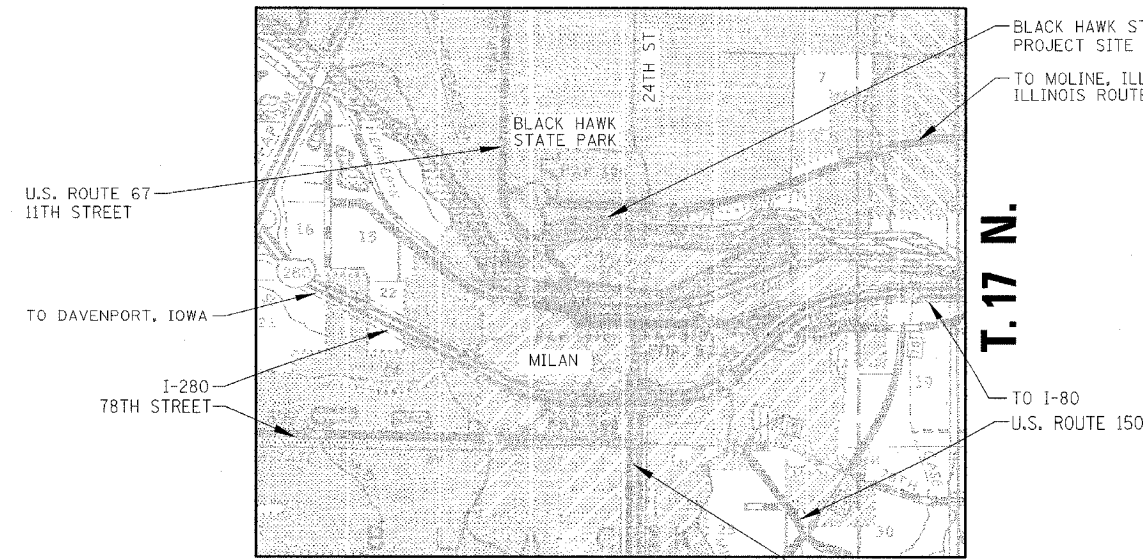
- 1 COVER SHEET
- 2 TYPICAL SECTIONS
- 3 SURVEY TIES, BENCHMARKS AND GENERAL NOTES
- 4 SUMMARY AND SCHEDULES OF QUANTITIES
- 5 REMOVAL PLAN
- 6 PROPOSED PLAN - PATCHES AND WIDENING
- 7 DRAINAGE PLAN
- 8 PROPOSED CONTOUR AND ELEVATION PLAN
- 9 WEST PATHWAY GATE ENTRANCE CROSS SECTIONS

STATE STANDARDS

- 000001-04
- 280001-02
- 601101
- 701801-03
- 702001-05

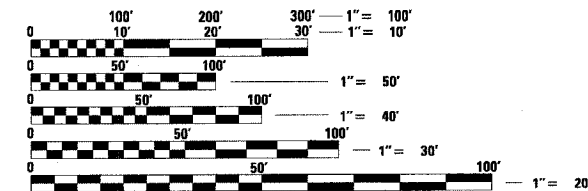


R. 2 W.



LOCATION MAP

GROSS LENGTH = N/A
NET LENGTH = N/A



FULL SIZE PLANS HAVE BEEN PREPARED USING STANDARD ENGINEERING SCALES. REDUCED SIZED PLANS WILL NOT CONFORM TO STANDARD SCALES. IN MAKING MEASUREMENTS ON REDUCED PLANS, THE ABOVE SCALES MAY BE USED.

J.U.L.I.E.
JOINT UTILITY LOCATION INFORMATION FOR EXCAVATION
1-800-892-0123



Philip Matone
SIGNATURE

EXPIRATION DATE NOV. 30, 2005

STATE OF ILLINOIS
DEPARTMENT OF TRANSPORTATION
DIVISION OF HIGHWAYS

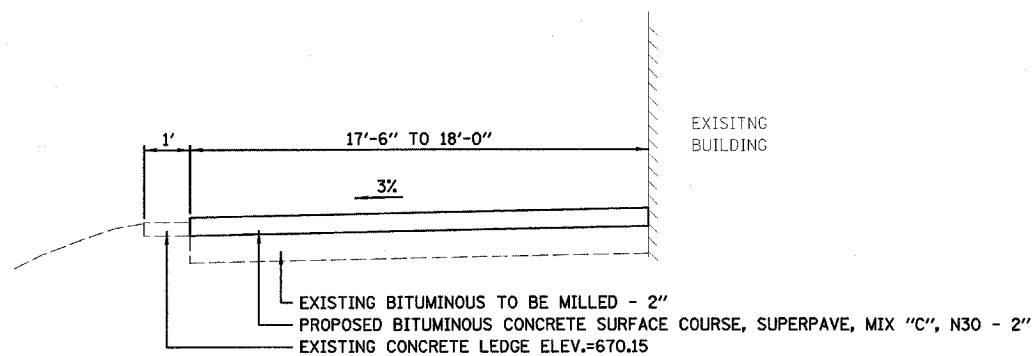
SUBMITTED _____ 20 _____

DEPUTY DIRECTOR OF HIGHWAYS, REGION ENGINEER
July 1, 20 05
Mike Hine
ENGINEER OF DESIGN AND ENVIRONMENT

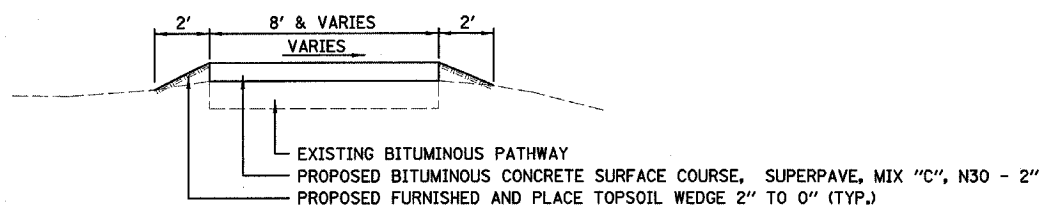
DEPARTMENT OF HIGHWAYS, CHIEF ENGINEER
July 1, 20 05
Victor Modesto

**PRINTED BY THE AUTHORITY
OF THE STATE OF ILLINOIS**

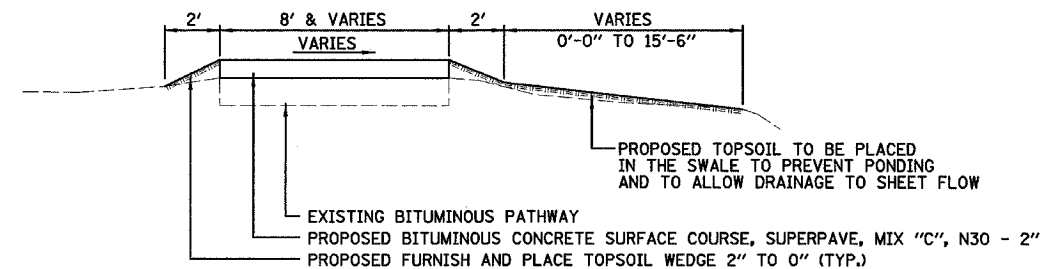
F.A. RTE.	SECTION	COUNTY	TOTAL SHEETS	SHEET NO.
		ROCK ISLAND	9	2
STA.	TO STA.			
FED. ROAD DIST. NO.	ILLINOIS	FED. AID PROJECT		



PROPOSED TYPICAL SECTION ①
(PORTICO DRIVE)

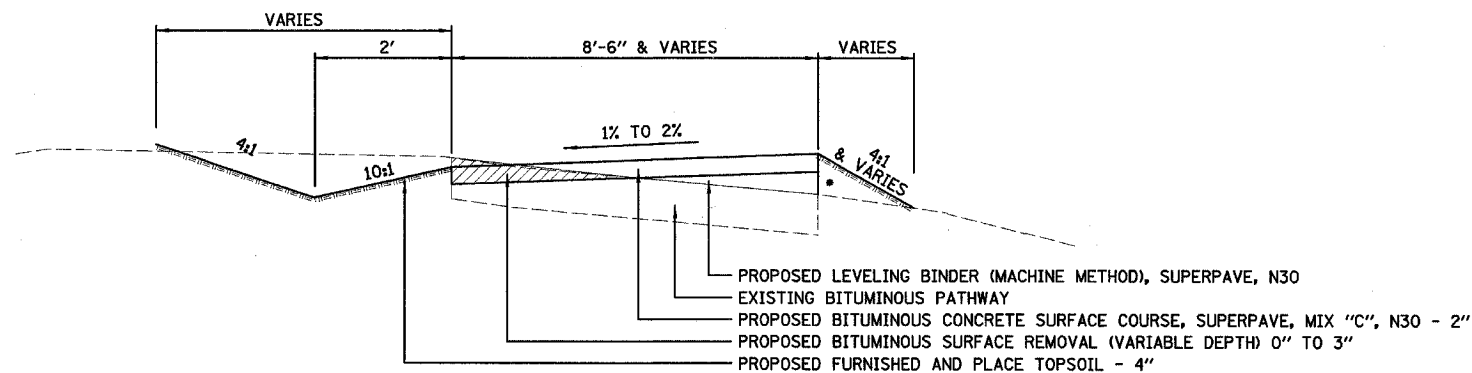


PROPOSED TYPICAL SECTION ②
(PATH WAYS)



PROPOSED TYPICAL SECTION ③
(WEST PATHWAY)

NOTE:
THE LIMITS FOR THIS TYPICAL ARE AS FOLLOWS:
STARTING 50' SOUTHEAST FROM THE WEST PARKING LOT WHERE
PATHWAY BENDS EAST. 85' EAST FROM STARTING POINT.



• LEVELING BINDER THICKNESS 0" TO 5/2"

PROPOSED TYPICAL SECTION ④
(WEST PATHWAY)

NOTE:
THE LIMITS FOR THIS TYPICAL SECTION ARE AS FOLLOWS:
STARTING OPPOSITE THE EXISTING STORM INLET, 61'± WEST
OF THE ROCKWALL ENTRY, SOUTH SIDE OF THE LODGE BUILDING (0+00)
AND PROCEEDING EAST 100' TO 35' EAST OF THE WEST FACE OF THE
ROCKWALL ENTRY (1+00).

PLOT DATE = #DATE#
PLOT SCALE = #SCALE#
USER NAME = #USER#

DESIGNED BY LAW	 2706 McGraw Drive Bloomington, Illinois 61704 309/683-8436, 309/683-1571 fax	FILE NO. 24-7524
DRAWN BY DRR		DATE 5/02/05
CHECKED BY PJM		SHEET NO. 2 OF 9

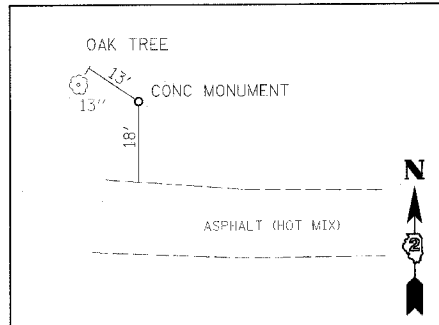
REVISIONS	
NAME	DATE

ILLINOIS DEPARTMENT OF TRANSPORTATION
TYPICAL SECTIONS
IDOT / IHPA
BLACK HAWK STATE HISTORIC SITE

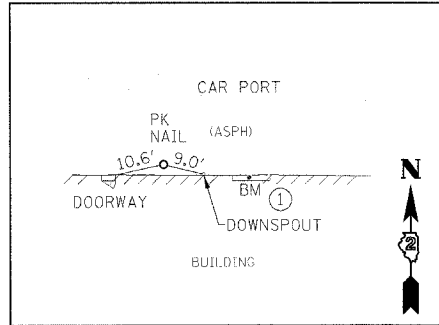
SCALE: VERT. _____
HORIZ. _____

DRAWN BY _____
CHECKED BY _____

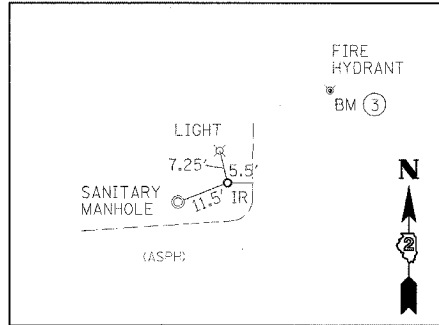
F.A. RTE.	SECTION	COUNTY	TOTAL SHEETS	SHEET NO.
		ROCK ISLAND	9	3
STA.	TO STA.			
FED. ROAD DIST. NO.	ILLINOIS	FED. AID PROJECT		



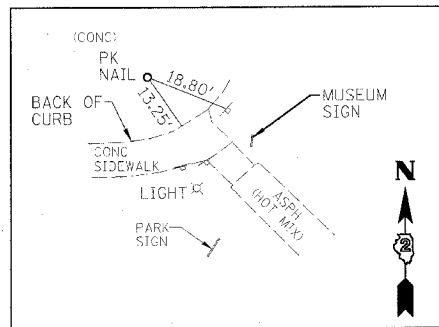
CONTROL PT #10
(CONCRETE MONUMENT)
N9585.688
E21211.821
ELEV=678.90



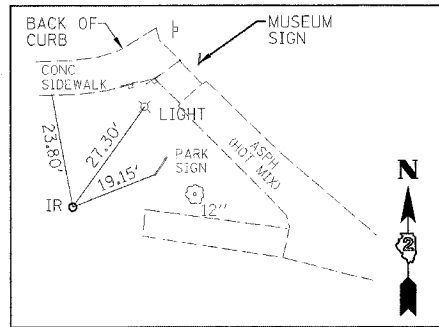
CONTROL PT #15
(PK NAIL)
N9554.352
E21363.993
ELEV=670.77



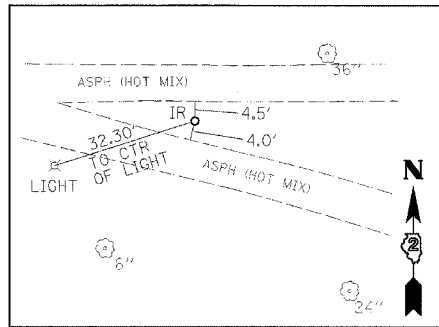
CONTROL PT #14
(IRON ROD)
N9580.111
E21470.252
ELEV=670.82



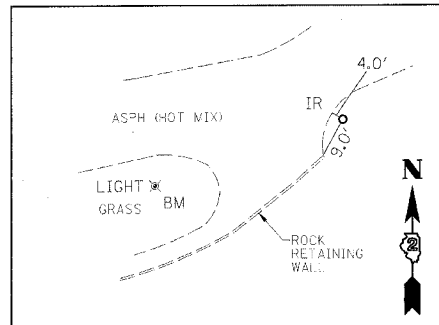
CONTROL PT #25
(PK NAIL)
N9573.150
E20920.995
ELEV=669.71



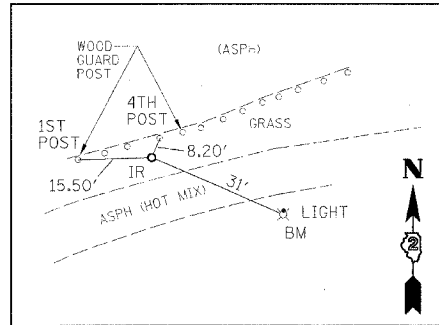
CONTROL PT #26
(IRON ROD)
N9527.091
E20916.095
ELEV=668.85



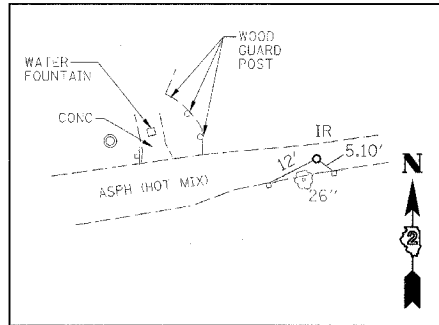
CONTROL PT #21
(IRON ROD)
N9489.221
E21133.410
ELEV=674.46



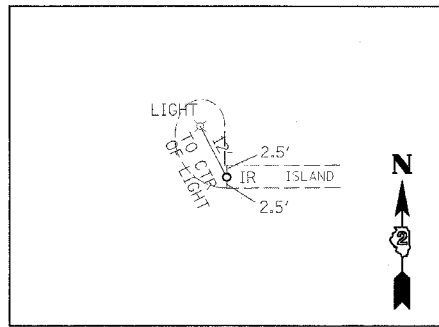
CONTROL PT #16
(IRON ROD)
N9439.223
E21417.567
ELEV=682.25



CONTROL PT #3
(IRON ROD)
N9560.813
E21631.199
ELEV=673.78



CONTROL PT #13
(IRON ROD)
N9567.722
E21723.689
ELEV=674.35



CONTROL PT #12
(IRON ROD)
N9613.873
E21711.762
ELEV=674.50

GENERAL NOTES

- G.N. 4
THE FINAL TOP 100mm (FOUR INCHES) OF SOIL IN ANY AREA DISTURBED BY THE CONTRACTOR MUST BE CAPABLE OF SUPPORTING VEGETATION. THE SOIL MUST BE FROM A HORIZON (ZERO TO 2' DEEP) OF SOIL PROFILES OF LOCAL SOILS.
- G.N. 67
THE COST OF MAKING SEWER CONNECTIONS TO EXISTING DRAINAGE STRUCTURES SHALL BE INCLUDED IN THE VARIOUS CONTRACT UNIT PRICES FOR STORM SEWER.
- G.N. 73
THE CONTRACTOR SHALL DETERMINE FLOWLINES OF EXISTING SEWER LINES WHICH ARE SHOWN ON THE PLANS AS ESTIMATED OR UNKNOWN. THIS INFORMATION IS NECESSARY BEFORE ORDERING INLETS AND MANHOLES.
- G.N. 74
WHERE FIELD TILE IS ENCOUNTERED, STORM SEWER OR PIPE DRAIN WILL BE USED IN ACCORDANCE WITH SECTION 611. THE MINIMUM SIZE FOR REPLACEMENT WILL BE 150mm (6") FOR PIPE DRAINS AND 200mm (8") FOR STORM SEWER, BUT THE SIZE MUST BE AT LEAST 50mm (2") LARGER THAN THE ADJOINING TILE. A FIELD TILE JUNCTION VAULT WILL BE CONSTRUCTED AT THE RIGHT OF WAY TO CONNECT THE TILE AND STORM.
- G.N. 102
THE CONTRACTOR SHALL BE RESPONSIBLE FOR PROTECTING UTILITY PROPERTY DURING CONSTRUCTION OPERATIONS AS OUTLINED IN ARTICLE 107.31 OF THE STANDARD SPECIFICATIONS. A MINIMUM OF 48 HOURS ADVANCE NOTICE IS REQUIRED FOR NON-EMERGENCY WORK. THE J.U.L.I.E. NUMBER IS 800-892-0123
- G.N. 105
CADD DATA WILL BE AVAILABLE TO CONTRACTORS AND CONSULTANTS WORKING ON THIS PROJECT. THIS INFORMATION WILL BE PROVIDED UPON REQUEST AS MICROSTATION CADD FILES AND COORDINATE GEOMETRY FILES ONLY. IF DATA IS REQUIRED IN OTHER FORMATS IT WILL BE THE USER'S RESPONSIBILITY TO MAKE THESE CONVERSIONS. IF ANY DISCREPANCY OR INCONSISTENCY ARISES BETWEEN THE ELECTRONIC DATA AND THE INFORMATION ON THE HARD COPY, THE INFORMATION ON THE HARD COPY SHOULD BE USED. CONTACT THE DISTRICT'S PROJECT ENGINEER TO REQUEST THESE FILES.

COMMITMENTS

- THE CONTRACTOR IS TO CONTACT BLACK HAWK STATE HISTORIC SITE MANAGER, SCOTT ROMAN, (309) 788-0177 TO COORDINATE CONSTRUCTION SCHEDULE.

APPLICATION RATES	
BITUMINOUS MATERIALS (PRIME COAT) MC-30	0.40 GAL/SY
BITUMINOUS MATERIALS (PRIME COAT) RC-70	0.10 GAL/SY
BITUMINOUS CONCRETE BINDER COURSE	112 LB/IN/SY
BITUMINOUS CONCRETE SURFACE COURSE	112 LB/IN/SY
GRANULAR MATERIALS	2.05 TONS/CY
NITROGEN FERTILIZER NUTRIENT	90 LB/ACRE
PHOSPHERUS FERTILIZER NUTRIENT	90 LB/ACRE
POTASSIUM FERTILIZER NUTRIENT	90 LB/ACRE
MULCH METHOD 1	2 TONS/ACRE

BITUMINOUS TABLE			
MIXTURE USE (S):	SURFACE	LEVELING BINDER	BINDER
PG	58-22	58-22	58-22
RAP % (MAX)	30	30	30
DESIGN AIR VOIDS	4.2	4.2	4.2
MIXTURE COMPOSITION (GRADATION MIXTURE)	IL 9.5	IL 9.5	IL 19.0
FRICTION AGGREGATE	MIX C	N/A	N/A
20 YEAR ESAL	N30	N30	N30

BENCHMARK LOCATIONS

NUMBER	DESCRIPTION	ELEVATION
①	ON FLOOR AT LODGE IN MAIN ENTRANCE TO BUILDING	670.83
②	TOP FIRE HYDRANT ON N SIDE OF LODGE IN FRONT OF PARKING LOT FOR LODGE EMPLOYEE'S	673.25
③	CUT " " ON CONC BASE FOR LIGHT SW OF EAST PARKING LOT, 2ND LIGHT E OF THE END OF LODGE	673.79
④	CUT " " ON N SIDE OF LIGHT BASE S OF MAIN FLOOR ENTRANCE TO LODGE	684.08
⑤	TOP FIRE HYDRANT W OF W END OF LODGE ± 100' (TOP OF OPERATING NUT)	675.17
⑥	PK NAIL SET IN 6"x6" POST ON SW CORNER OF STAIR DECK ON S SIDE OF TRAIL ± 100 SE OF PARKING LOT	668.31

REVISIONS	
NAME	DATE

ILLINOIS DEPARTMENT OF TRANSPORTATION
SURVEY TIES, BENCHMARKS,
AND GENERAL NOTES
IDOT / IHPA
BLACK HAWK STATE HISTORIC SITE

SCALE: VERT.
HORIZ.
DATE

DRAWN BY
CHECKED BY

PLOT DATE = #DATE*
FILE NAME = #FILE#
USER NAME = #USER#

DESIGNED BY LAW	<p>Farnsworth GROUP 2709 McGraw Drive Bloomington, Illinois 61704 309/889-8436, 309/693-1571 fax</p>	FILE NO. 24-7524
DRAWN BY DRR		DATE 5/02/05
CHECKED BY PJM		SHEET NO. 3 OF 9

F.A. RTE.	SECTION	COUNTY	TOTAL SHEETS	SHEET NO.
		ROCK ISLAND	9	4
STA.		TO STA.		
FED. ROAD DIST. NO.		ILLINOIS FED. AID PROJECT		

SCHEDULE OF QUANTITIES

EARTHWORK TABLE LOCATION	CU YD	CU YD	SQ YD
	CUT VOLUME	FILL VOLUME	TOPSOIL PLACEMENT
WEST PATHWAY	1	10	565
NORTH PORTICO DRIVE	5	0	37
LODGE ENTRANCE	5	0	311
EAST PATHWAY	11	0	323
CONTINGENCY	0	0	64

NOTE:
EARTH EXCAVATION IS NOT BELIEVED SUITABLE FOR EMBANKMENT NOR TOPSOIL. THEREFORE, TOPSOIL IS REQUIRED TO BE FURNISHED AND PLACED AND EMBANKMENT IS PROVIDED VIA FURNISHED EXCAVATION.

TOTAL EARTH EXCAVATION = 22 CY
TOTAL TOPSOIL PLACEMENT = 1230 SY = 135 CY
TOTAL FILL (S.F. = 1.25) = 13 CY
TOTAL WASTE = 22 CY

LANDSCAPE SCHEDULE LOCATION	SEEDING CLASS 1 ACRE	NITROGEN FERTILIZER NUTRIENT POUND	PHOSPHORUS FERTILIZER NUTRIENT POUND	POTASSIUM FERTILIZER NUTRIENT POUND	MULCH METHOD 1 TON	INLET AND PIPE PROTECTION EACH	PERIMETER EROSION BARRIER FOOT
WEST PATHWAY	0.13	12.0	12.0	12.0	0.26	1	225
NORTH PORTICO DRIVE	0.02	1.0	1.0	1.0	0.04	0	0
LODGE ENTRANCE	0.07	5.5	5.5	5.5	0.14	0	0
EAST PATHWAY	0.08	6.5	6.5	6.5	0.16	0	0
TOTALS	0.30	25.0	25.0	25.0	0.6	1	225

MAINLINE QUANTITIES LOCATION	BIT. SURF. REM BUTT JOINT SQ YD	BIT. SURF. REM 2" SQ YD	BIT. SURF. REM (VAR. DEPTH) SQ YD	AGG. BASE COURSE TY. B TON	BIT. MATL'S (PRIME COAT) GAL	LEVEL BINDER (MACHINE METHOD) SUPERPAVE TON	BIT. CONC. BINDER SUPERPAVE IL 19.0 TON	BIT. CONC. SURFACE SUPERPAVE MIX "C" TON	TEMP. RAMP SQ YD	SIDE-WALK REM. SQ FT
WEST PATHWAY	21	0	45	3	56	15	2	56	16	255
NORTH PORTICO DRIVE	0	290	0	0	30	0	0	35	22	0
LODGE ENTRANCE	66	0	0	8	91	0	5	103	67	0
EAST PATHWAY	28	0	0	19	53	0	3	41	5	2
TOTALS	115	290	45	30	230	15	10	235	110	257

STORM SEWER SCHEDULE LOCATION	STORM SEWER REMOVAL		STORM SEWERS CLASS B, TYPE 1 6" PVC FOOT	TRENCH BACKFILL CU YD	CONCRETE HEADWALL FOR PIPE DRAINS EACH	MANHOLES TO BE ADJUSTED EACH	INLETS TO BE ADJUSTED EACH
	4"	6"					
WEST PATHWAY	0	0	0	0	0	0	1
NORTH PORTICO DRIVE	60	30	95	36	6	1	0
LODGE ENTRANCE	0	0	0	0	0	0	0
EAST PATHWAY	0	0	0	0	0	0	0
TOTALS	60	30	95	36	6	1	1

PATCHING SCHEDULE LOCATION	CLASS D PATCHES			BIT. MATL'S (PRIME COAT) GAL	AGG. BSE. CSE., TY. B (INCIDENTIAL) TON	BIT. CONC. BINDER CSE. (INCIDENTIAL) TON
	TYPE I SQ YD	TYPE II SQ YD	TYPE III SQ YD			
WEST PATHWAY	0	0	0	0	0	0
NORTH PORTICO DRIVE	4	35	20	24	34	14
LODGE ENTRANCE	0	0	0	0	0	0
EAST PATHWAY	0	0	0	0	0	0
TOTALS	4	35	20	24	34	14

SUMMARY OF QUANTITIES

URBAN
1000

CODE NO.	ITEM	UNIT	TOTAL QUANTITY
20400100	EARTH EXCAVATION	CU YD	5
20200500	EARTH EXCAVATION (WIDENING)	CU YD	20
20400800	FURNISHED EXCAVATION	CU YD	10
20800150	TRENCH BACKFILL	CU YD	36
21101615	TOPSOIL FURNISH AND PLACE, 4"	SQ YD	1300
21301052	EXPLORATION TRENCH 52" DEPTH	FOOT	105
25000100	SEEDING, CLASS 1	ACRE	0.3
25000400	NITROGEN FERTILIZER NUTRIENT	POUND	25
25000500	PHOSPHORUS FERTILIZER NUTRIENT	POUND	25
25000600	POTASSIUM FERTILIZER NUTRIENT	POUND	25
25100110	MULCH, METHOD 1	TON	0.6
25100630	EROSION CONTROL BLANKET	SQ YD	6
28000400	PERMETER EROSION BARRIER	FOOT	225
28000500	INLET AND PIPE PROTECTION	EACH	1
35101400	AGGREGATE BASE COURSE, TYPE B	TON	30
40600100	BITUMINOUS MATERIALS (PRIME COAT)	GAL	230
40600980	BITUMINOUS SURFACE REMOVAL - BUTT JOINT	SQ YD	115
40600990	TEMPORARY RAMP	SQ YD	110
44000007	BITUMINOUS SURFACE REMOVAL, 2"	SQ YD	290
44000030	BITUMINOUS SURFACE REMOVAL (VARIABLE DEPTH)	SQ YD	45
44000600	SIDEWALK REMOVAL	SQ FT	257
44201974	CLASS D PATCHES, TYPE I	SQ YD	4
44201976	CLASS D PATCHES, TYPE II	SQ YD	35
44201978	CLASS D PATCHES, TYPE III	SQ YD	20
550B0020	STORM SEWERS, CLASS B, TYPE 1, 6"	FOOT	95
55100100	STORM SEWER REMOVAL, 4"	FOOT	60
55100200	STORM SEWER REMOVAL, 6"	FOOT	30
60100060	CONCRETE HEADWALL FOR PIPE DRAINS	EACH	6
60255500	MANHOLES TO BE ADJUSTED	EACH	1
60260100	INLETS TO BE ADJUSTED	EACH	1
67100100	MOBILIZATION	L SUM	1
70102640	TRAFFIC CONTROL AND PROTECTION, STANDARD 701801	L SUM	1
X4066412	BITUMINOUS CONCRETE SURFACE COURSE, SUPERPAVE, MIX "C", N30	TON	235
X4066612	BITUMINOUS CONCRETE BINDER COURSE, SUPERPAVE, IL-19.0, N30	TON	10
X4066760	LEVELING BINDER (MACHINE METHOD) SUPERPAVE, N30	TON	15
Z0013798	CONSTRUCTION LAYOUT	L SUM	1

* SPECIAL PROVISION

REVISIONS	
NAME	DATE

ILLINOIS DEPARTMENT OF TRANSPORTATION
SUMMARY OF QUANTITIES
& SCHEDULE OF QUANTITIES
IDOT / IHPA
BLACK HAWK STATE HISTORIC SITE

SCALE: VERT.
HORIZ.
DATE

DRAWN BY
CHECKED BY

PLOT DATE = *DATE*
FILE NAME = *FILE*
PLOT SCALE = *SCALE*
USER NAME = *USER*

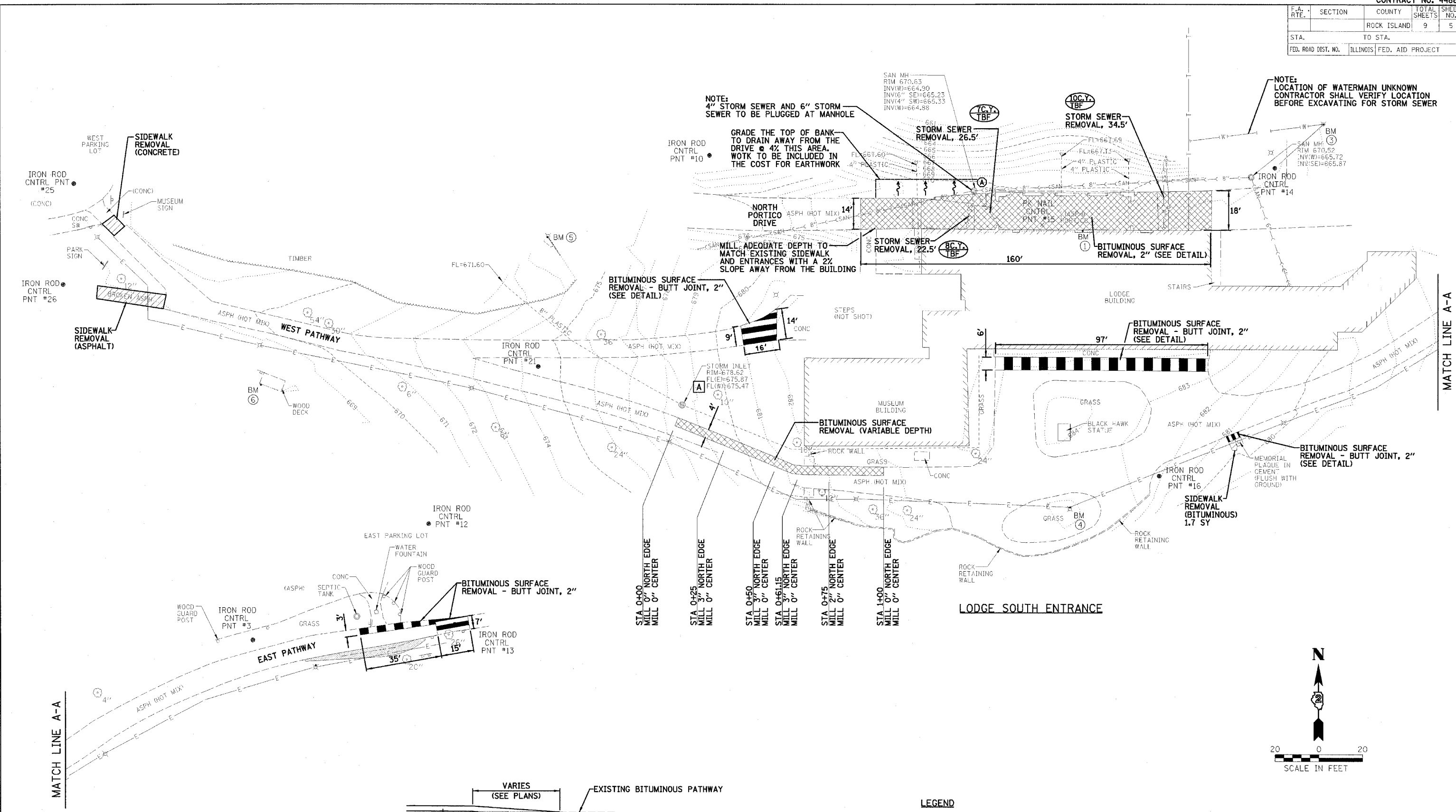
DESIGNED BY LAW	 2709 McAndrew Drive Bloomington, Illinois 61704 309/888-8436, 309/888-1571 fax	FILE NO. 24-7524
DRAWN BY DRR		DATE 5/02/05
CHECKED BY PJM		SHEET NO. 4 OF 9

F.A. RTE.	SECTION	COUNTY	TOTAL SHEETS	SHEET NO.
		ROCK ISLAND	9	5
STA.	TO STA.			
FED. ROAD DIST. NO. ILLINOIS FED. AID PROJECT				

NOTE:
4" STORM SEWER AND 6" STORM SEWER TO BE PLUGGED AT MANHOLE

NOTE:
GRADE THE TOP OF BANK TO DRAIN AWAY FROM THE DRIVE @ 4% THIS AREA. WOKT TO BE INCLUDED IN THE COST FOR EARTHWORK

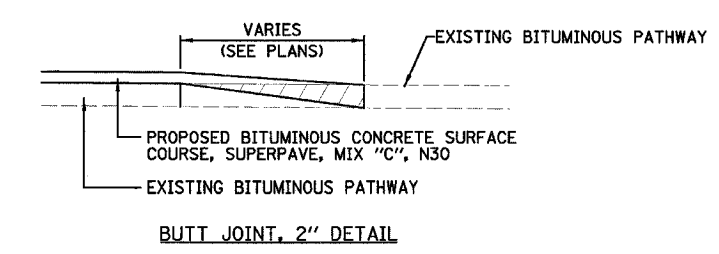
NOTE:
LOCATION OF WATERMAIN UNKNOWN CONTRACTOR SHALL VERIFY LOCATION BEFORE EXCAVATING FOR STORM SEWER



DESIGNED BY LAW
DRAWN BY DRR
CHECKED BY PJM

Farnsworth GROUP
2709 McGraw Drive
Bloomington, Illinois 61704
309/663-8435, 309/893-1571 fax

FILE NO. 24-7524
DATE 5/02/05
SHEET NO. 5 OF 9



LEGEND

(TC.Y) TBF AMOUNT OF TRENCH BACKFILL

(Hatched Box) BITUMINOUS OR CONCRETE TO BE REMOVED

REVISIONS

NAME	DATE

ILLINOIS DEPARTMENT OF TRANSPORTATION

REMOVAL PLAN

IDOT / IHPA

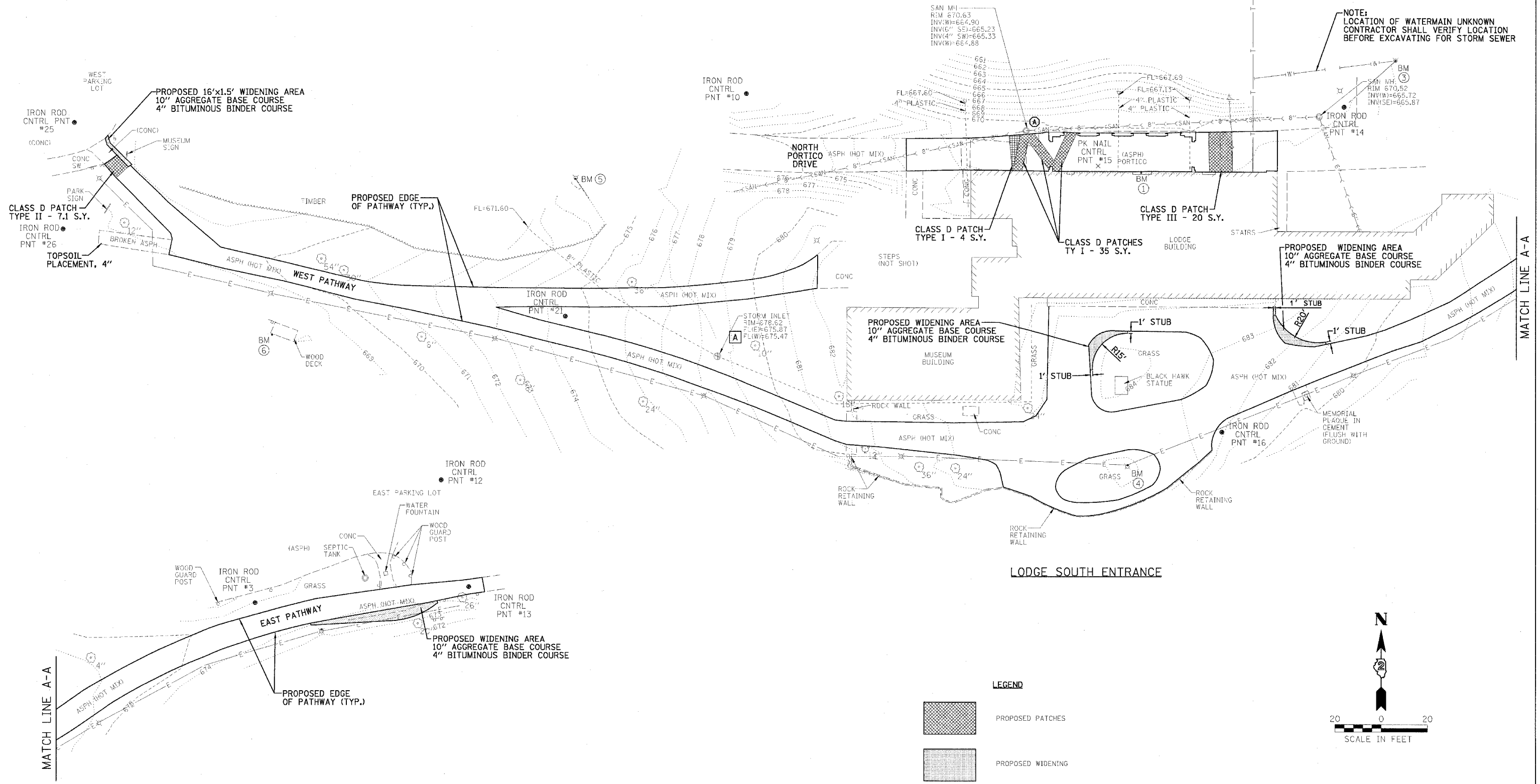
BLACK HAWK STATE HISTORIC SITE

SCALE: VERT. DATE HORIZ. DATE

DRAWN BY CHECKED BY

PLOT DATE = #DATE#
FILE NAME = #FILE#
PLOT SCALE = #SCALE#
USER NAME = #USER#

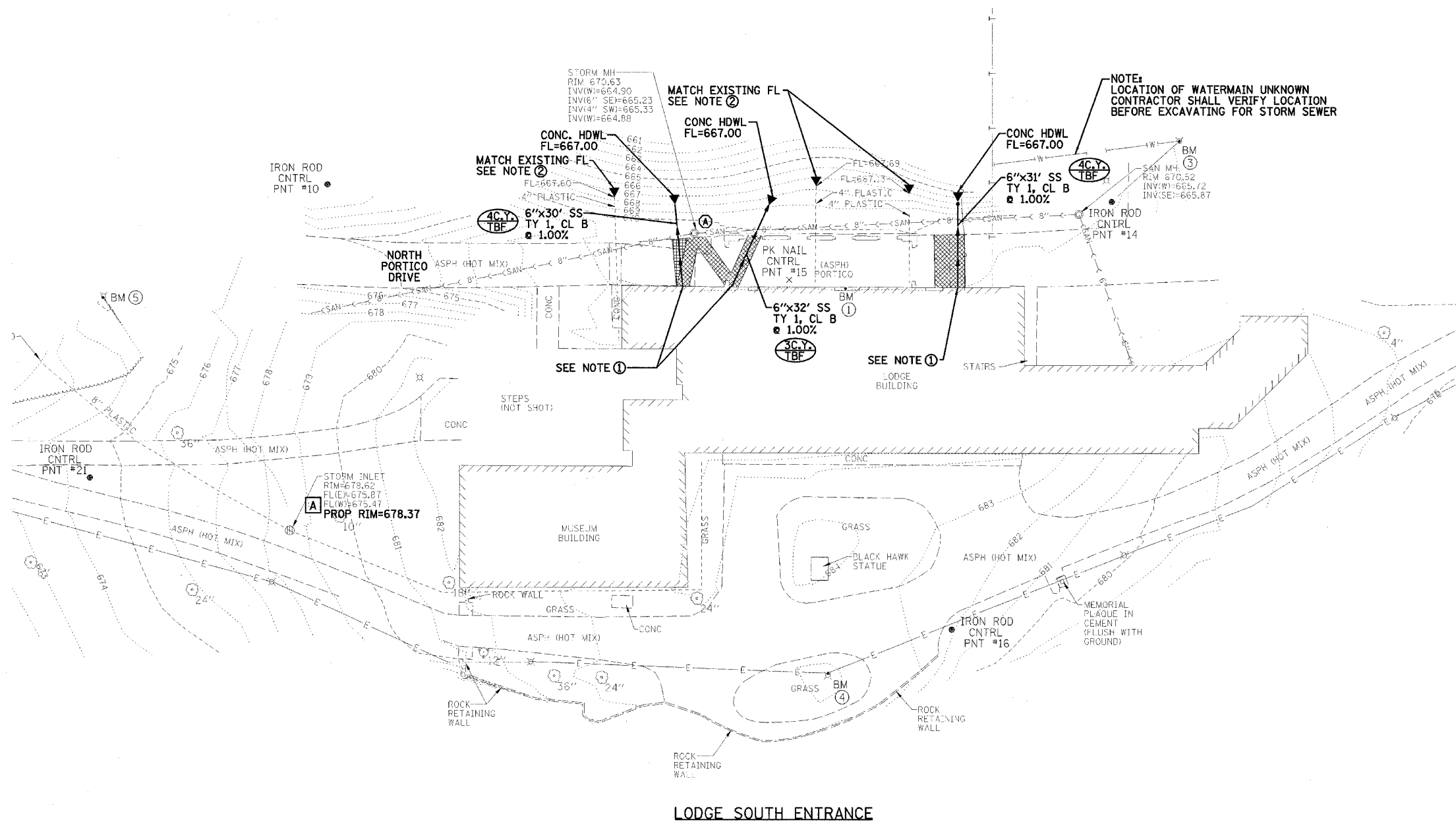
F.A. RTE.	SECTION	COUNTY	TOTAL SHEETS	SHEET NO.
		ROCK ISLAND	9	6
STA.	TO STA.			
FED. ROAD DIST. NO.	ILLINOIS	FED. AID PROJECT		



PLOT DATE = 5/14/05
 PLOT TIME = 10:58 AM
 PLOT SCALE = AS SHOWN
 USER NAME = PJM

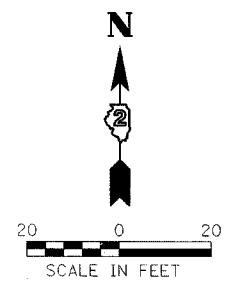
DESIGNED BY LAW	<p>Farnsworth GROUP 2706 McGrew Drive Bloomington, Illinois 61704 308/683-8435, 308/883-1571 fax</p>	FILE NO. 24-7524
DRAWN BY DRR		DATE 5/02/05
CHECKED BY PJM		SHEET NO. 6 OF 9

F.A. RTE.	SECTION	COUNTY	TOTAL SHEETS	SHEET NO.
		ROCK ISLAND	9	7
STA.		TO STA.		
FED. ROAD DIST. NO.		ILLINOIS FED. AID PROJECT		



NOTE: LOCATION OF WATERMAIN UNKNOWN CONTRACTOR SHALL VERIFY LOCATION BEFORE EXCAVATING FOR STORM SEWER

- NOTES:
- ① DOWNSPOUT CONNECTION DETAILS TO BE PROVIDED BY ILLINOIS HISTORICAL PRESERVATION AGENCY. THE SCUPPERS ARE TO BE ATTACHED TO THE PROPOSED STORM SEWERS AND THE EXISTING DOWNSPOUT DRAINS IN THREE (3) PLACES. CONNECTION ELEV.=671.3
 - ② CONTRACTOR IS TO CONNECT THE EXISTING 4" PIPE UNDERDRAINS FOR THE DOWNSPOUTS, 3 PLACES, WITH PROPOSED CONCRETE HEADWALL FOR PIPE DRAINS.
 - ③ ▼ - PROPOSED CONCRETE HEADWALL FOR PIPE DRAINS.
 - ④ (3CY TBF) AMOUNT OF TRENCH BACKFILL



REVISIONS	
NAME	DATE

ILLINOIS DEPARTMENT OF TRANSPORTATION
DRAINAGE PLAN
 IDOT / IHPA
BLACK HAWK STATE HISTORIC SITE

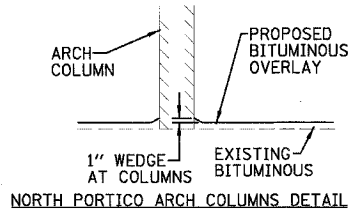
SCALE: VERT. _____
 HORIZ. _____
 DATE _____

DRAWN BY _____
 CHECKED BY _____

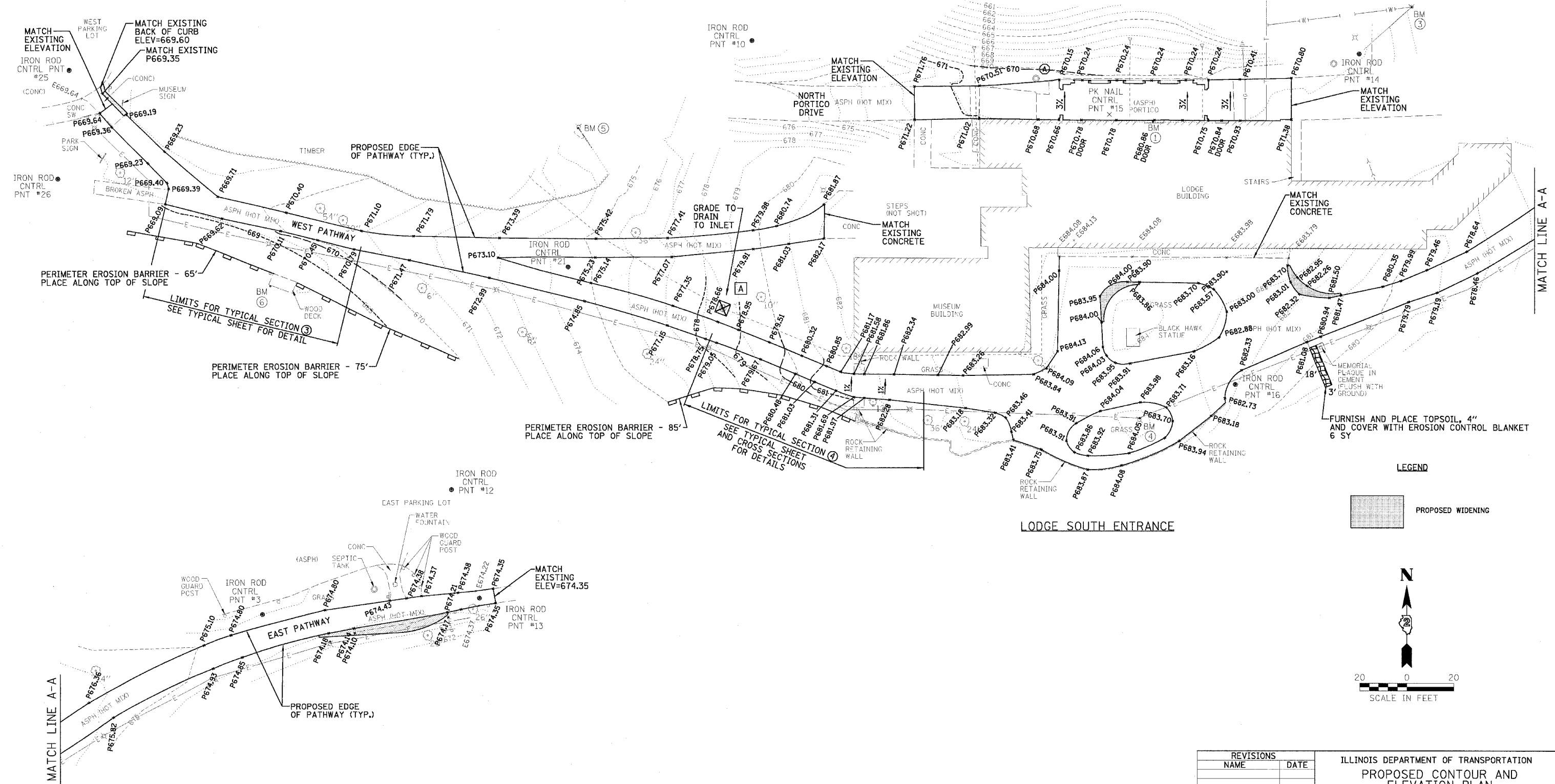
DESIGNED BY LAW	<p>2709 McGraw Drive Bloomington, Illinois 61704 309/663-8495, 309/663-1571 fax</p>	FILE NO. 24-7524
DRAWN BY DRR		DATE 5/02/05
CHECKED BY PJM		SHEET NO. 7 OF 9

PLOT DATE = #DATE#
 FILE NAME = #FILE#
 PLOT SCALE = #SCALE#
 USER NAME = #USER#

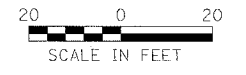
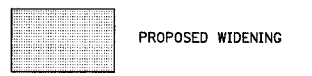
F.A. RTE.	SECTION	COUNTY	TOTAL SHEETS	SHEET NO.
		ROCK ISLAND	9	8
STA.	TO STA.			
FED. ROAD DIST. NO.	ILLINOIS FED. AID PROJECT			



NOTE:
THE CONTRACTOR SHALL CONSTRUCT BITUMINOUS WEDGES (1") ALONG INSIDE OF THE NORTH WALLS OF PORTICO TO INSURE WATER DRAINAGE OUT OF THE OPENINGS OF THE PORTICO.



LEGEND



REVISIONS	
NAME	DATE

ILLINOIS DEPARTMENT OF TRANSPORTATION
PROPOSED CONTOUR AND ELEVATION PLAN
IDOT / IHPA
BLACK HAWK STATE HISTORIC SITE

SCALE: VERT. _____
HORIZ. _____
DATE _____ DRAWN BY _____
CHECKED BY _____

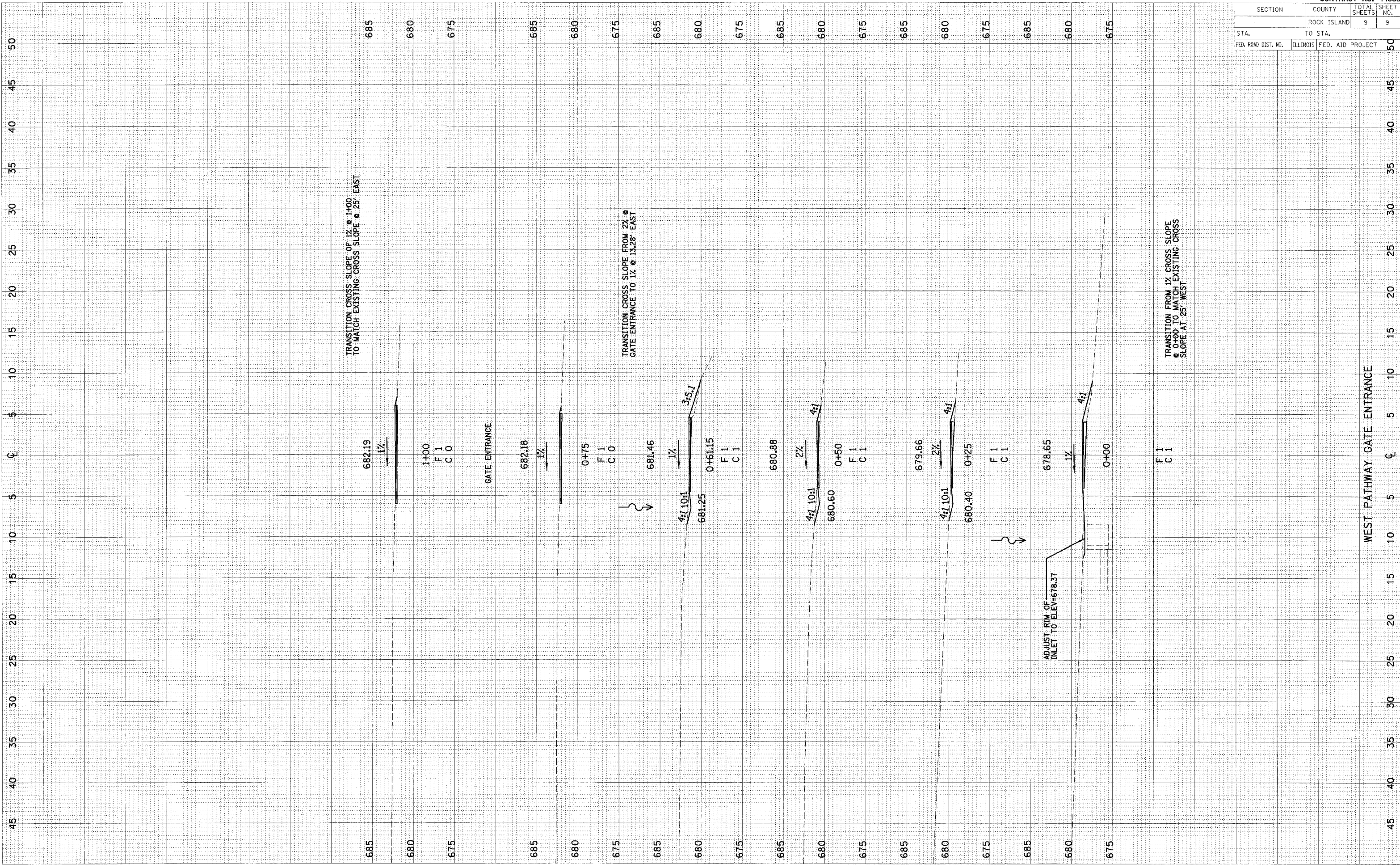
PLOT DATE = #DATE#
FILE NAME = #FILE#
PLOT SCALE = #SCALE#
USER NAME = #USER#

DESIGNED BY LAW	 2709 McGraw Drive Bloomington, Illinois 61704 309/863-6435, 309/863-1671 fax	FILE NO. 24-7524
DRAWN BY DRR		DATE 5/02/05
CHECKED BY PJM		SHEET NO. 8 OF 9

PLOT DATE = *DATE*
 FILE NAME = *FILE*
 PLOT SCALE = *SCALE*
 USER NAME = *USER*

SURVEYED
 PLOTTED
 NOTE BOOK
 AREAS
 AREAS CHECKED

SURVEYED
 PLOTTED
 NOTE BOOK
 AREAS
 AREAS CHECKED



TRANSITION CROSS SLOPE OF 1% @ 1+00
 TO MATCH EXISTING CROSS SLOPE @ 25' EAST

TRANSITION CROSS SLOPE FROM 2% @
 GATE ENTRANCE TO 1% @ 13.28' EAST

TRANSITION FROM 1% CROSS SLOPE
 @ 0+00 TO MATCH EXISTING CROSS
 SLOPE AT 25' WEST

WEST PATHWAY GATE ENTRANCE

CONTRACT NO. 44883

SECTION	COUNTY	TOTAL SHEETS	SHEET NO.
	ROCK ISLAND	9	9
STA.	TO STA.		
FED. ROAD DIST. NO.	ILLINOIS	FED. AID PROJECT	50