

F.A. RTE.	SECTION	COUNTY	TOTAL SHEETS	SHEET NO.
		PEORIA	8	1

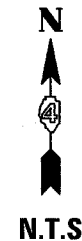
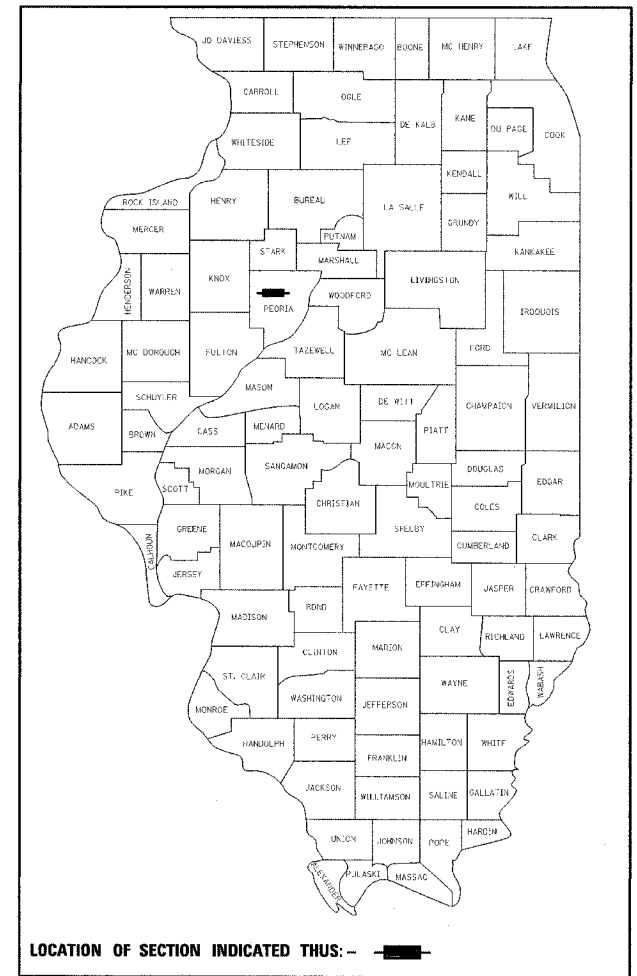
**STATE OF ILLINOIS**  
**DEPARTMENT OF TRANSPORTATION**  
**DIVISION OF HIGHWAYS**  
**IDOT / IHPA STATEWIDE**  
**JUBILEE COLLEGE STATE HISTORICAL SITE**  
**PARK ROAD IMPROVEMENTS**  
**PEORIA COUNTY**  
**JOB NO. C-30-021-05**  
**ROUTE PARK ROADS**

**INDEX OF SHEETS**

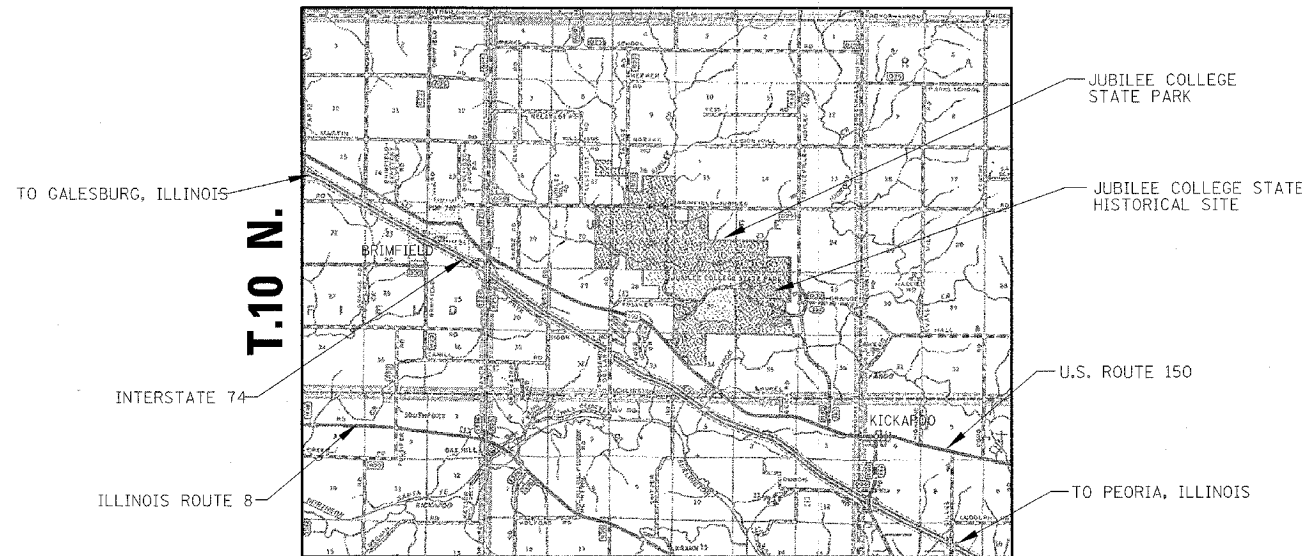
- 1 COVER SHEET
- 2 TYPICAL SECTIONS AND GENERAL NOTES
- 3 SUMMARY OF QUANTITIES AND SCHEDULES
- 4 REMOVAL PLAN
- 5 PROPOSED PLAN AND DETAILS
- 6 PROPOSED CONTOUR AND ELEVATION PLAN
- 7-8 SHOP DRIVE CROSS SECTIONS

**STATE STANDARDS**

- 601101
- 602301
- 604036-01
- 701801-03
- 702001-05

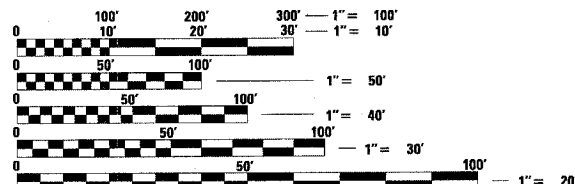


**R. 6 E.**



**LOCATION MAP**

GROSS LENGTH = N/A  
NET LENGTH = N/A



FULL SIZE PLANS HAVE BEEN PREPARED USING STANDARD ENGINEERING SCALES. REDUCED SIZED PLANS WILL NOT CONFORM TO STANDARD SCALES. IN MAKING MEASUREMENTS ON REDUCED PLANS, THE ABOVE SCALES MAY BE USED.

J.U.L.I.E.  
JOINT UTILITY LOCATION INFORMATION FOR EXCAVATION  
1-800-892-0123

**CONTRACT NO. 44883**



*Phillip Moore 5/21/05*  
SIGNATURE

EXPIRATION DATE NOV. 30, 2005

**STATE OF ILLINOIS**  
**DEPARTMENT OF TRANSPORTATION**  
**DIVISION OF HIGHWAYS**

SUBMITTED \_\_\_\_\_ 20 \_\_\_\_\_

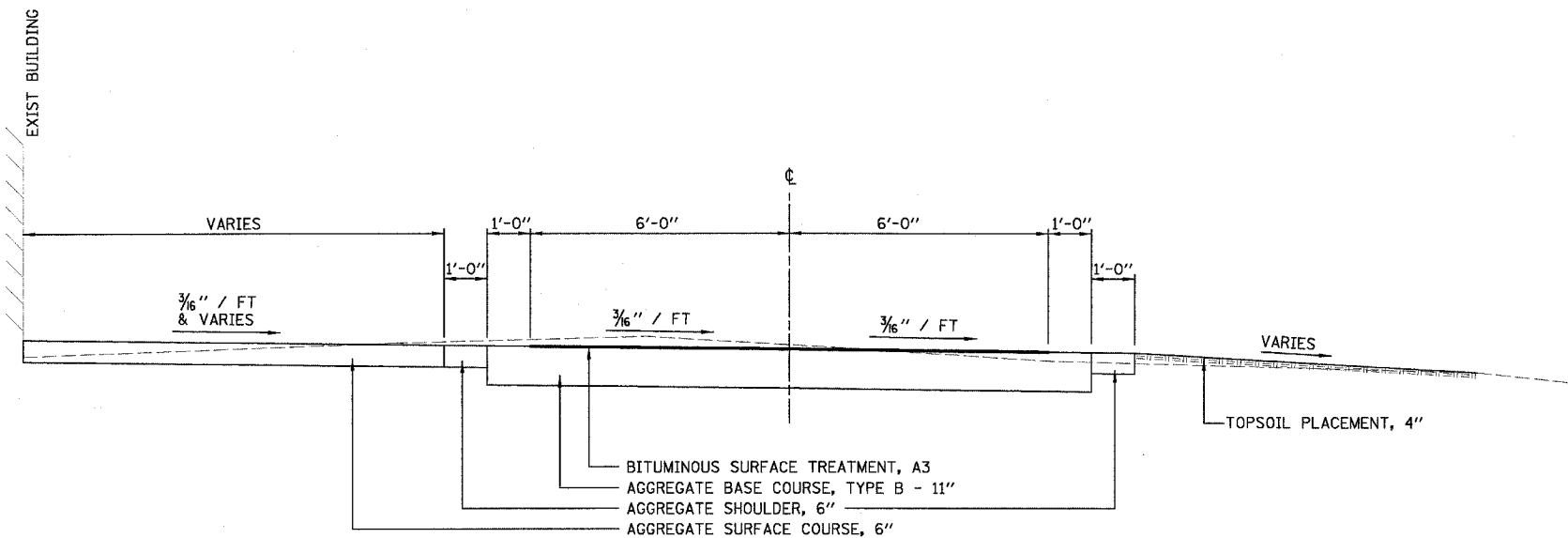
DEPUTY DIRECTOR OF HIGHWAYS, REGION ENGINEER

*July 1, 2005*  
*Mike Hare* (Signature)  
ENGINEER OF DESIGN AND ENVIRONMENT

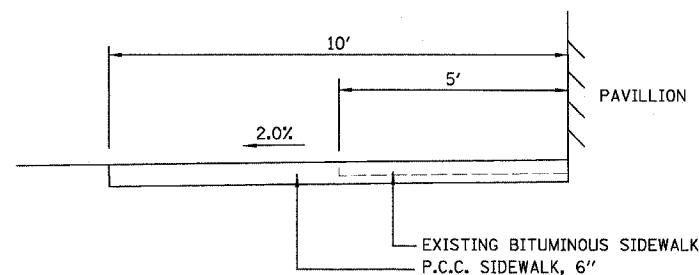
*July 1, 2005*  
*Victor Modere* (Signature)  
DIRECTOR OF HIGHWAYS, CHIEF ENGINEER

**PRINTED BY THE AUTHORITY OF THE STATE OF ILLINOIS**

F.A. RITE.	SECTION	COUNTY	TOTAL SHEETS	SHEET NO.
		PEORIA	8	2
STA.		TO STA.		
FED. ROAD DIST. NO.		ILLINOIS	FED. AID PROJECT	



(SHOP DRIVE)  
PROPOSED TYPICAL SECTION  
STA 0+00.00 TO STA 1+02.66



(PAVILLION)  
PROPOSED TYPICAL SECTION

GENERAL NOTES

G.N. - 105.06

1. MICROSTATION FILES OF THIS PROJECT WILL BE MADE AVAILABLE TO THE CONTRACTOR. IF THERE IS A CONFLICT BETWEEN THE ELECTRONIC FILES AND THE PRINTED CONTRACT PLANS AND DOCUMENTS, THE PRINTED CONTRACT PLANS AND DOCUMENTS SHALL TAKE PRECEDENCE OVER THE ELECTRONIC FILES. THE CONTRACTOR SHALL ACCEPT ALL RISK ASSOCIATED WITH USING THE ELECTRONIC FILES AND SHALL HOLD THE DEPARTMENT HARMLESS FOR ANY ERRORS OR OMISSIONS IN THE ELECTRONIC FILES AND THE DATA CONTAINED THEREIN. ERRORS OR DELAYS RESULTING FROM THE USE OF THE ELECTRONIC FILES BY THE CONTRACTOR SHALL NOT RESULT IN AN EXTENSION OF TIME FOR ANY INTERIM OR FINAL COMPLETION DATE OR SHALL NOT BE CONSIDERED CAUSE FOR ADDITIONAL COMPENSATION. THE CONTRACTOR SHALL NOT USE, SHARE, OR DISTRIBUTE THESE ELECTRONIC FILES EXCEPT FOR THE PURPOSE OF CONSTRUCTION THIS CONTRACT. ANY CLAIMS BY THIRD PARTIES DUE TO USE OR ERRORS SHALL BE THE SOLE RESPONSIBILITY OF THE CONTRACTOR. THE CONTRACTOR SHALL INCLUDE THIS DISCLAIMER WITH THE TRANSFER OF THESE ELECTRONIC FILES TO ANY OTHER PARTIES AND SHALL INCLUDE APPROPRIATE LANGUAGE BINDING THEM TO SIMILAR RESPONSIBILITIES.

2. G.N. - 107.00

COMMITMENTS ARE NOT TO BE ALTERED WITHOUT WRITTEN APPROVAL OF ALL PARTIES TO WHICH THE COMMITMENT WAS MADE.

3. G.N. - 201-04

THE DISTRICT FOUR TREE COMMITTEE SHOULD BE CONTACTED AND PRIOR APPROVAL FOR ANY TREE REMOVAL BEYOND THE LIMITS/ LOCATIONS INCLUDED IN THE PLANS.

4. G.N. - 542.00

THE CONTRACTOR SHALL CONSULT WITH THE ENGINEER IN REGARD TO THE EXACT LENGTH OF THE BOX/ PIPE CULVERTS, STORM SEWERS, AND/ OR PIPE DRAINS REQUIRED PRIOR TO ORDERING THESE ITEMS.

5. G.N. - 602-00

IN ACCORDANCE WITH SECTION 602 OF THE STANDARD SPECIFICATIONS, THE CONNECTING OF EXISTING DRAIN TILES, PIPE CULVERTS, OR STORM SEWERS TO THE PROPOSED DRAINAGE SYSTEM STRUCTURES WILL NOT BE PAID FOR SEPARATELY BUT SHALL BE CONSIDERED AS INCLUDED IN THE PAY ITEM PROVIDED.

COMMITMENTS

1. THE CONTRACTOR IS TO CONTACT JUBILEE COLLEGE STATE HISTORIC SITE MANAGER JIM TUMMINELLI AT (309) 243-9489 TO COORDINATE CONSTRUCTION SCHEDULE.

2. THE CONTRACTOR IS NOT TO MOVE TO THE SITE ANY EQUIPMENT, MATERIALS, WORKERS, OR ANY OTHER CONSTRUCTION RELATED NEEDS PRIOR TO JUNE 20, 2005, DUE TO THE OLDE ENGLISH FAIRE BEING HELD ON JUNE 18TH AND 19TH.

APPLICATION RATES

BITUMINOUS MATERIALS (PRIME COAT) MC-30	0.40 GAL/SY
BITUMINOUS MATERIALS (PRIME COAT) RC-70	0.10 GAL/SY
BITUMINOUS MATERIALS (COVER AND SEAL COATS)	0.30 GAL/SY
COVER COAT AGGREGATE	25 LBS/SY
SEAL COAT AGGREGATE	25 LBS/SY
GRANULAR MATERIALS	2.05 TONS/CY
NITROGEN FERTILIZER NUTRIENT	90 LB/ACRE
PHOSPHERUS FERTILIZER NUTRIENT	90 LB/ACRE
POTASSIUM FERTILIZER NUTRIENT	90 LB/ACRE
MULCH METHOD 1	2 TONS/ACRE

CONTROL POINTS

POINT	NORTHING	EASTING	ELEVATION
1	10000.000	10000.000	102.190
2	10000.000	10246.100	100.000
3	10164.022	10145.526	94.454
4	10290.369	10056.970	85.274

POINT #2 - CROSS CUT ON TOP OF WALL 1.25' SOUTH OF CORNER POST SOUTH SIDE OF MAIN ROAD AT EAST ENTRANCE GATE.

REVISIONS	
NAME	DATE

ILLINOIS DEPARTMENT OF TRANSPORTATION  
TYPICAL SECTIONS  
AND GENERAL NOTES  
IDOT/IHPA  
JUBILEE COLLEGE STATE  
HISTORIC SITE

SCALE: VERT.  
HORIZ.  
DATE

DRAWN BY  
CHECKED BY

DESIGNED BY LAW	<p>2706 McCraw Drive Bloomington, Illinois 61704 309/663-8495, 309/663-1571 fax</p>	FILE NO. 24-7525
DRAWN BY DRR		DATE 4/22/05
CHECKED BY PJM		SHEET NO. 2 OF 8

DATE = 4/22/05  
DRAWN BY = DRR  
CHECKED BY = PJM  
USER NAME = PJM

F.A. RTE.	SECTION	COUNTY	TOTAL SHEETS	SHEET NO.
—	—	PEORIA	8	3
STA.	TO STA.			
FED. ROAD DIST. NO.	ILLINOIS FED. AID PROJECT			

SCHEDULE OF QUANTITIES

EARTHWORK TABLE		CU YD	CU YD	SQ YD
LOCATION	STATION TO STATION	CUT VOLUME	FILL VOLUME	TOPSOIL PLACEMENT
SHOP DRIVE	0+00 TO 1+02.66	63	4	114
BENNET COTTAGE		0	0	54
PAVILLION		0	0	298

TOTAL EARTH EXCAVATION = 63 CY  
 TOTAL TOPSOIL PLACEMENT = 466 SY = 52 CY  
 TOTAL FILL (S.F. = 1.25) = 5 CY  
 TOTAL WASTE = 63-5-52 = 6 CY

NOTE:  
 TOPSOIL IS TO BE STOCKPILED AND PLACED BACK AFTER CONSTRUCTION OF SHOP DRIVE AND THE PAVILLION.

TREE REMOVAL						
LOCATION	STATION	OFFSET	NO. OF TREES	IN. DIA.	TOTAL UNITS	
					6" - 15" DIA.	OVER 15" DIA.
SHOP DRIVE	0+97	5' RT	1	24		24
BENNET COTTAGE						
PAVILLION						
TOTALS						24

MAINLINE QUANTITIES	BIT. MATLS. PRIME COAT	BIT. MATLS. COVER & SEAL COAT	COVER COAT AGG.	SEAL COAT AGG.	AGG. BASE COURSE TY. B	AGG. SHLDRS. TY. B	AGG. SURF. COURSE TY. B	FIRE HYDRANT AND VALVE TO BE MOVED
LOCATION	GAL	GAL	TON	TON	TON	TON	TON	EACH
SHOP DRIVE	65	125	5	2	105	10	25	0
SHOP STORAGE LOT	0	415	10	9	0	0	0	0
PAVILLION	0	0	0	0	0	0	0	1
TOTALS	65	540	15	11	105	10	25	1

LANDSCAPE SCHEDULE	SEEDING CLASS 1 SPECIAL	NITROGEN FERTILIZER NUTRIENT	PHOSPHORUS FERTILIZER NUTRIENT	POTASSIUM FERTILIZER NUTRIENT	MULCH METHOD 1	PERIMETER EROSION BARRIER
LOCATION	ACRE	POUND	POUND	POUND	TON	FOOT
SHOP DRIVE	0.03	3	3	3	0.06	110
BENNET COTTAGE	0.01	1	1	1	0.02	0
PAVILLION	0.06	5	5	5	0.12	270
TOTALS	0.10	9	9	9	0.2	380

STORM SEWER SCHEDULE					
LOCATION	STORM SEWER REMOVAL	STORM SEWERS CLASS B, TYPE 1 4" PVC	TRENCH BACKFILL	CONCRETE HEADWALL FOR PIPE DRAINS	INLET TYPE A, TYPE 8 GRATE
	FOOT	FOOT	CU YD	EACH	EACH
SHOP DRIVE	25	55	2	1	1
BENNET COTTAGE	0	0	0	0	0
PAVILLION	0	0	0	0	0
TOTALS	25	55	2	1	1

SIDEWALKS				
LOCATION	SIDEWALK REMOVAL	PCC SIDEWALK 6 INCH	PCC SIDEWALK 6 INCH, SPECIAL	PIPE HANDRAIL
	SQ FT	SQ FT	SQ FT	FOOT
SHOP DRIVE	—	—	—	—
SUB TOTAL	0	0	0	0
BENNET COTTAGE	250	270	—	—
SUB TOTAL	250	270	0	0
PAVILLION	690	1490	1130	95
SUB TOTAL	690	1490	1130	95
TOTALS	940	1760	1130	95

SUMMARY OF QUANTITIES

SUMMARY OF QUANTITIES			I000
CODE NO.	ITEM	UNIT	TOTAL QUANTITY
20100210	TREE REMOVAL (OVER 15 UNITS DIAMETER)	UNIT	25
20200100	EARTH EXCAVATION	CU YD	65
20201500	SUB-BASE GRANULAR MATERIAL, TYPE B	TON	50
20800150	TRENCH BACKFILL	CU YD	2
21001000	GEOTECHNICAL FABRIC FOR GROUND STABILIZATION	SQ YD	70
21301052	EXPLORATION TRENCH 52" DEPTH	FOOT	125
25000100	SEEDING, CLASS 1	ACRE	0.1
25000400	NITROGEN FERTILIZER NUTRIENT	POUND	9
25000500	PHOSPHORUS FERTILIZER NUTRIENT	POUND	9
25000600	POTASSIUM FERTILIZER NUTRIENT	POUND	9
25100105	MULCH, METHOD I	TON	0.2
28000400	PERIMETER EROSION BARRIER	FOOT	380
35101400	AGGREGATE BASE COURSE, TYPE B	TON	105
40200800	AGGREGATE SURFACE COURSE, TYPE B	TON	25
40300100	BITUMINOUS MATERIALS (PRIME COAT)	GAL	65
40300300	BITUMINOUS MATERIALS (COVER AND SEAL COAT)	GAL	540
40300500	COVER COAT AGGREGATE	TON	15
40300600	SEAL COAT AGGREGATE	TON	11
42400300	PORTLAND CEMENT CONCRETE SIDEWALK 6 INCH	SQ FT	1760
42400440	PORTLAND CEMENT CONCRETE SIDEWALK 6 INCH, SPECIAL	SQ FT	1130
44000600	SIDEWALK REMOVAL	SQ FT	940
48101200	AGGREGATE SHOULDERS, TYPE B	TON	10
51000105	PIPE HANDRAIL	FOOT	95
550B0010	STORM SEWERS, CLASS B, TYPE 1 4"	FOOT	55
55100100	STORM SEWER REMOVAL 4"	FOOT	25
56400800	FIRE HYDRANT AND VALVE TO BE MOVED	EACH	1
60100060	CONCRETE HEADWALL FOR PIPE DRAIN	EACH	1
60236200	INLETS, TYPE A, TYPE 8 GRATE	EACH	1
67100100	MOBILIZATION	L SUM	1
70102640	TRAFFIC CONTROL AND PROTECTION, STANDARD 701801	L SUM	1
70013798	CONSTRUCTION LAYOUT	L SUM	1

\* SPECIAL PROVISION

REVISIONS	
NAME	DATE

ILLINOIS DEPARTMENT OF TRANSPORTATION  
 SUMMARY OF QUANTITIES  
 & SCHEDULE OF QUANTITIES  
 IDOT/IHPA  
 JUBILEE COLLEGE STATE  
 HISTORIC SITE

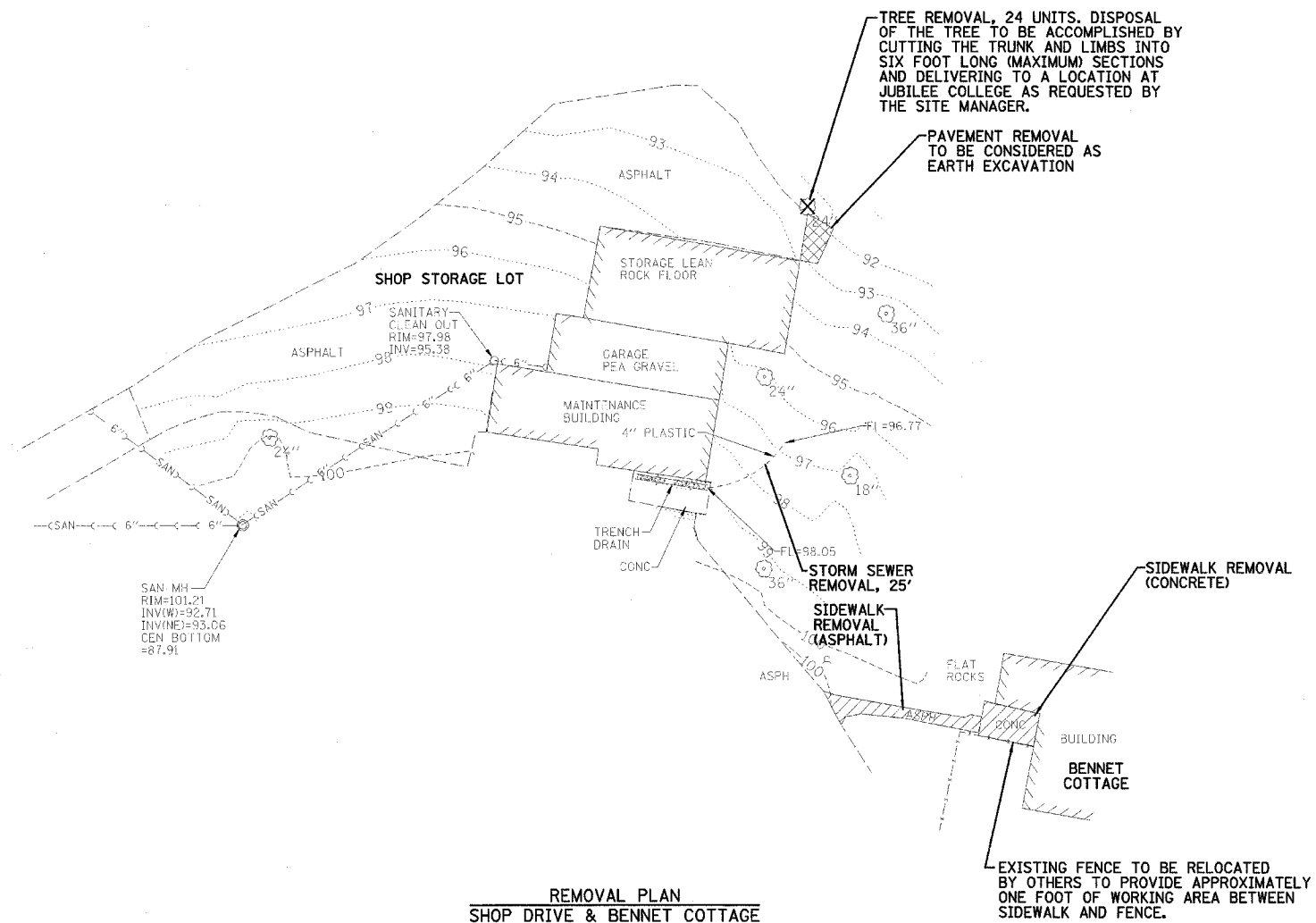
SCALE: VERT.  
 HORIZ.  
 DATE

DRAWN BY  
 CHECKED BY

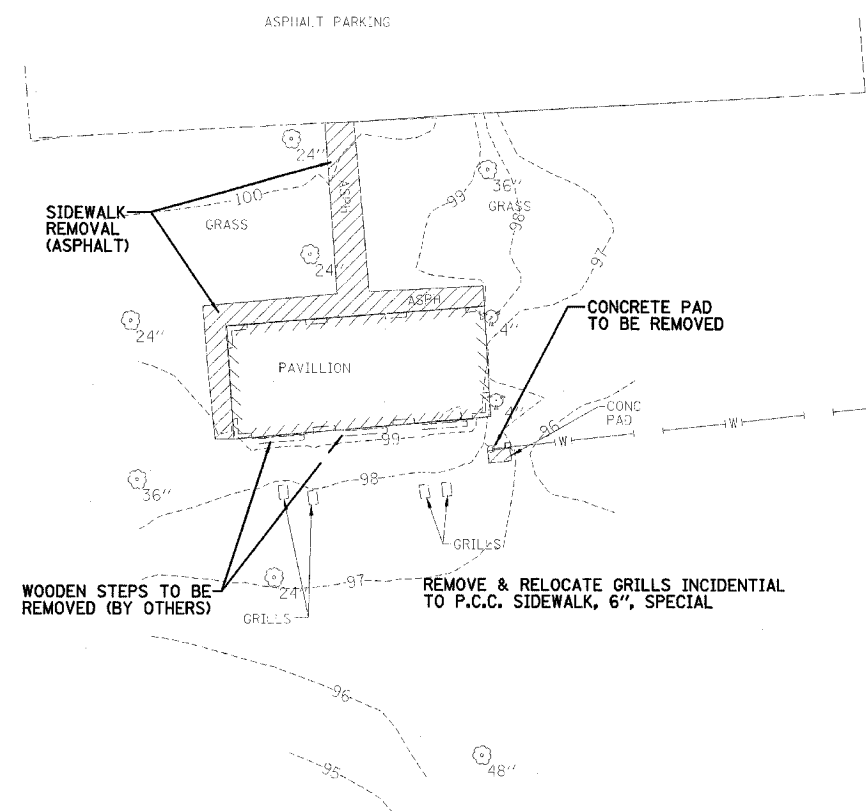
PLOT DATE = \$DATE\$  
 FILE NAME = \$FILE\$  
 PLOT SCALE = \$SCALE\$  
 USER NAME = \$USER\$

DESIGNED BY LAW	 2709 McGraw Drive Bloomington, Illinois 61704 309/663-8435, 309/663-1571 fax	FILE NO. 24-7525
DRAWN BY DRR		DATE 4/22/05
CHECKED BY PJM		SHEET NO. 3 OF 8

F.A. RTE.	SECTION	COUNTY	TOTAL SHEETS	SHEET NO.
—		PEORIA	8	4
STA.	TO STA.			
FED. ROAD DIST. NO.	ILLINOIS FED. AID PROJECT			

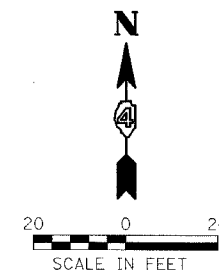


REMOVAL PLAN  
SHOP DRIVE & BENNET COTTAGE

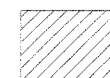


REMOVAL PLAN  
PAVILLION

EXISTING FENCE TO BE RELOCATED BY OTHERS TO PROVIDE APPROXIMATELY ONE FOOT OF WORKING AREA BETWEEN SIDEWALK AND FENCE.



LEGEND



SIDEWALK TO BE REMOVED BITUMINOUS OR CONCRETE

REVISIONS	
NAME	DATE

ILLINOIS DEPARTMENT OF TRANSPORTATION  
REMOVAL PLAN  
IDOT/IHPA  
JUBILEE COLLEGE STATE  
HISTORIC SITE

SCALE: VERT.  
HORIZ.  
DATE

DRAWN BY  
CHECKED BY

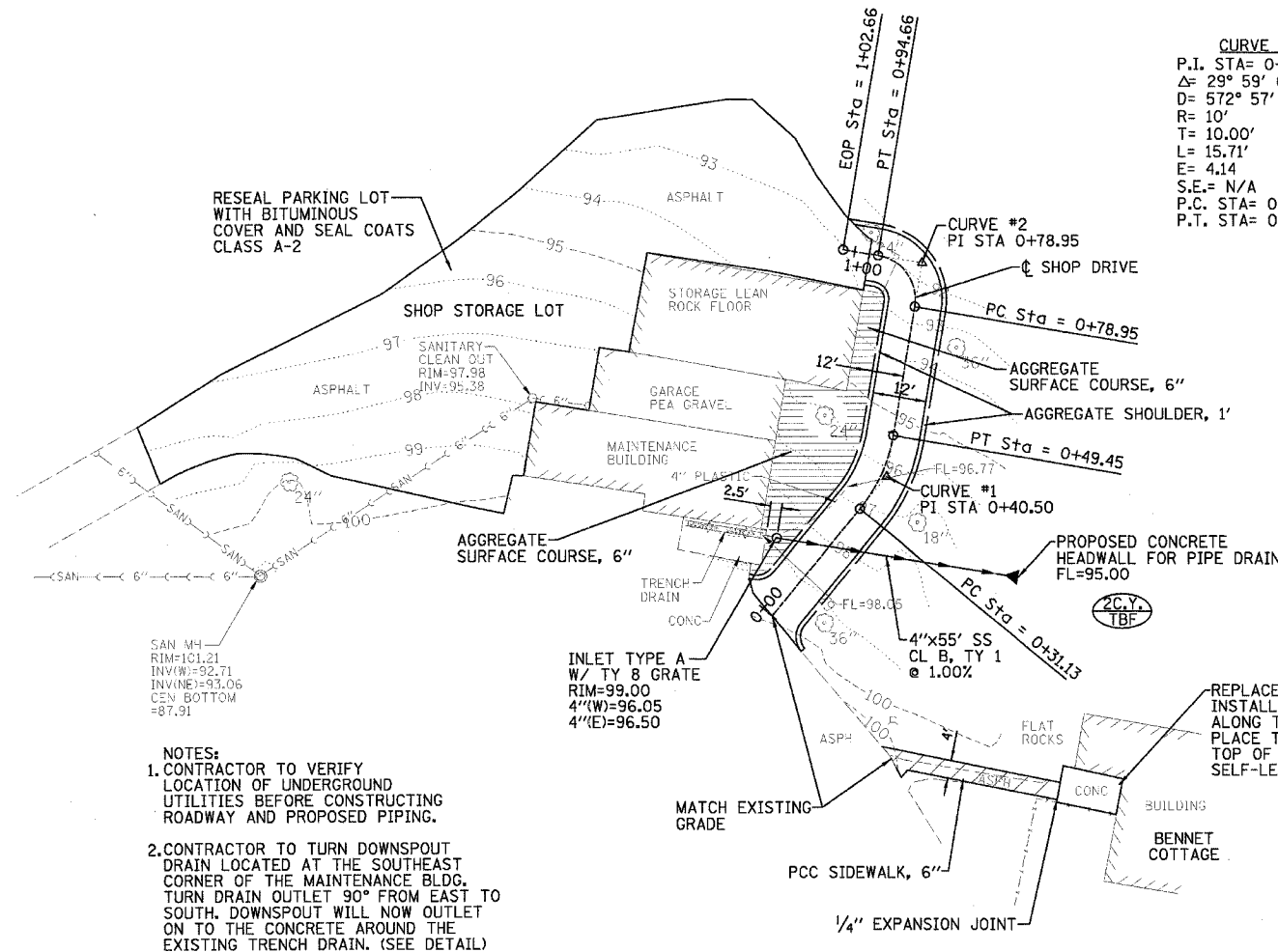
PLOT DATE = \$DATE\$  
FILE NAME = \$FILEL\$  
PLOT SCALE = \$SCALE\$  
USER NAME = \$USER\$

DESIGNED BY LAW	<p><b>Farnsworth</b> GROUP 2709 McGraw Drive Bloomington, Illinois 61704 309/663-8435, 309/663-1571 fax</p>	FILE NO. 24-7525
DRAWN BY DRR		DATE 4/22/05
CHECKED BY PJM		SHEET NO. 4 OF 8

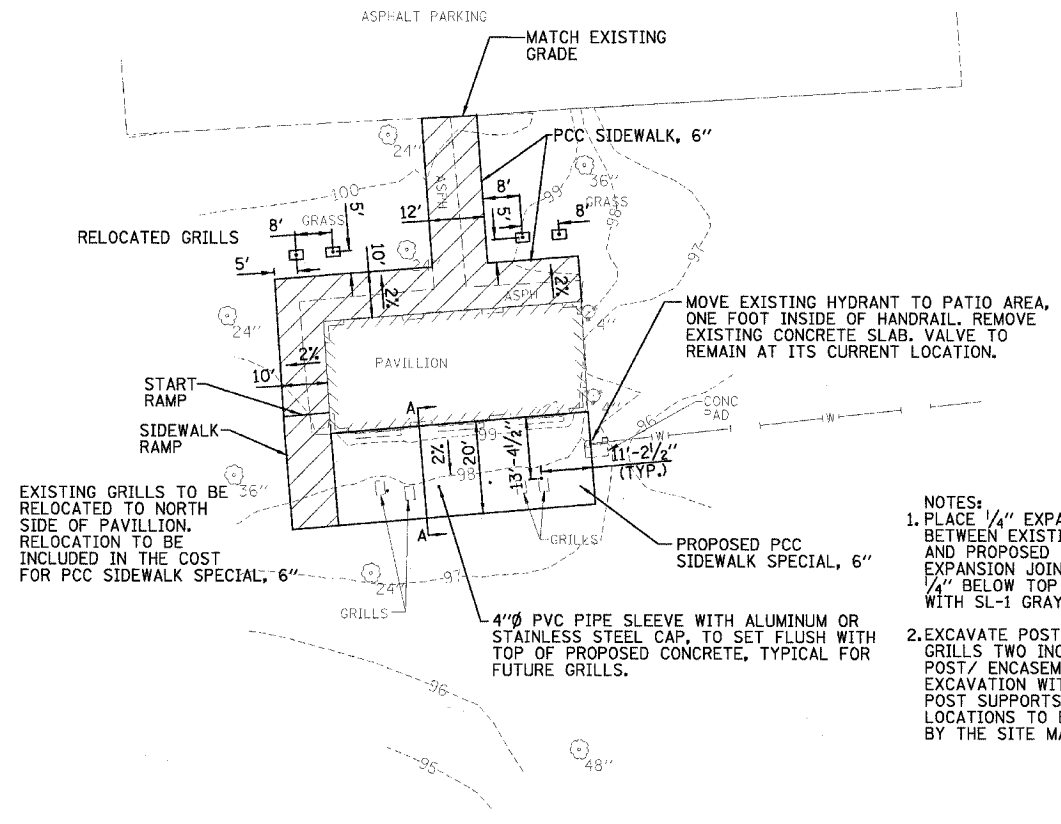
F.A. RITE.	SECTION	COUNTY	TOTAL SHEETS	SHEET NO.
		PEORIA	8	5
STA. TO STA.				
FED. ROAD DIST. NO. ILLINOIS FED. AID PROJECT				

**CURVE #2**  
 P.I. STA= 0+78.95  
 Δ= 29° 59' 60"  
 D= 572° 57' 28"  
 R= 10'  
 T= 10.00'  
 L= 15.71'  
 E= 4.14  
 S.E.= N/A  
 P.C. STA= 0+78.95  
 P.T. STA= 0+94.66

**CURVE #1**  
 P.I. STA= 0+40.50  
 Δ= 29° 59' 60"  
 D= 163° 42' 08"  
 R= 35'  
 T= 9.38'  
 L= 18.33'  
 E= 1.23  
 S.E.= N/A  
 P.C. STA= 0+31.13  
 P.T. STA= 0+49.45



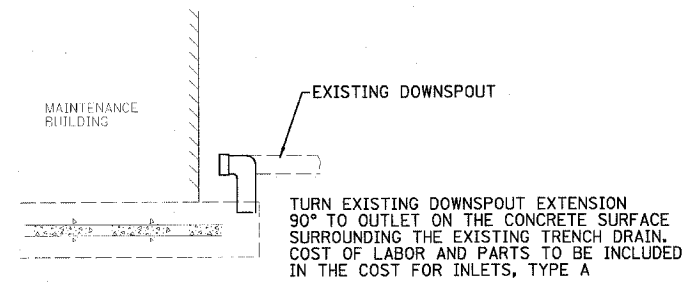
PLAN VIEW  
SHOP DRIVE & BENNET COTTAGE



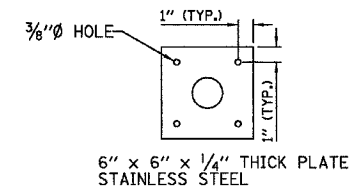
PLAN VIEW  
PAVILLION

- NOTES:
- PLACE 1/4" EXPANSION JOINT MATERIAL BETWEEN EXISTING PAVILLION CONCRETE AND PROPOSED 6" SIDEWALK. TOP OF EXPANSION JOINT MATERIAL TO BE PLACED 1/4" BELOW TOP OF CONCRETE AND SEALED WITH SL-1 GRAY SELF-LEVELING SEALER.
  - EXCAVATE POST HOLES FOR RELOCATED GRILLS TWO INCHES WIDER THAN EXISTING POST/ ENCASEMENT AND FILL OVER-EXCAVATION WITH CONCRETE. SET GRILL POST SUPPORTS PLUM & STRAIGHT. LOCATIONS TO BE SHOWN OR AS REQUESTED BY THE SITE MANAGER.

- NOTES:
- CONTRACTOR TO VERIFY LOCATION OF UNDERGROUND UTILITIES BEFORE CONSTRUCTING ROADWAY AND PROPOSED PIPING.
  - CONTRACTOR TO TURN DOWNSPOUT DRAIN LOCATED AT THE SOUTHEAST CORNER OF THE MAINTENANCE BLDG. TURN DRAIN OUTLET 90° FROM EAST TO SOUTH. DOWNSPOUT WILL NOW OUTLET ON TO THE CONCRETE AROUND THE EXISTING TRENCH DRAIN. (SEE DETAIL)

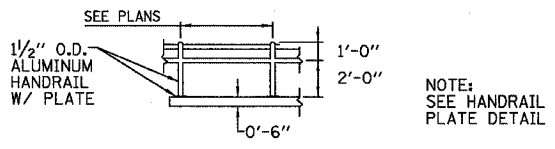


DOWNSPOUT DETAIL PLAN VIEW  
N.T.S.

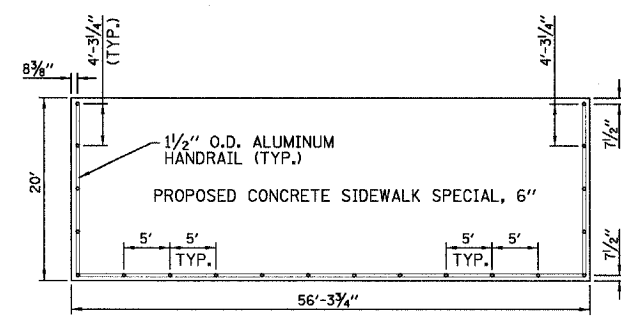


- NOTES:
- CONTRACTOR TO MARK PLATE HOLE ON CONCRETE BEFORE CORE DRILLING 1/2" DIA. HOLES @ 3" DEEP.
- PLACE 3/8" DIA. STAINLESS STEEL ALL-THREAD ROD IN HOLE AND FILL WITH EPOXY ADHESIVE.
- ATTACH 6"x6" STAINLESS STEEL PLATE WITH STAINLESS STEEL WASHERS AND NUTS.

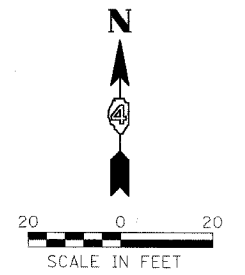
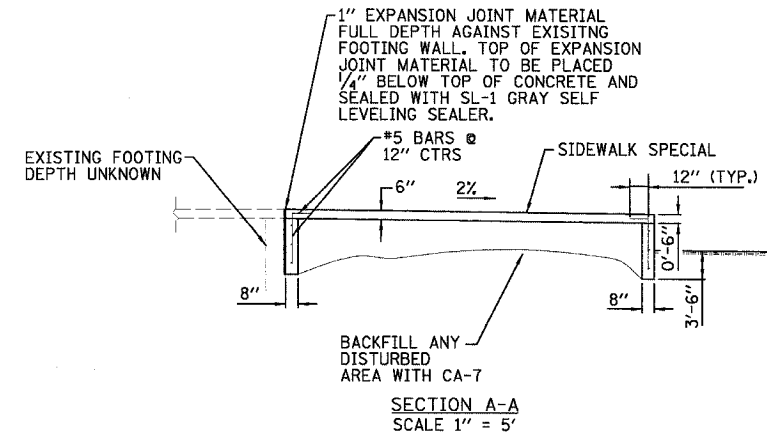
HANDRAIL PLATE DETAIL  
N.T.S.



PAVILLION HANDRAIL DETAIL (SIDE VIEW)  
SCALE 1" = 5'



PAVILLION HANDRAIL DETAIL (PLAN VIEW)  
SCALE 1" = 10'



REVISIONS	
NAME	DATE

ILLINOIS DEPARTMENT OF TRANSPORTATION  
 PROPOSED PLAN & DETAILS  
 IDOT/IHPA  
 JUBILEE COLLEGE STATE  
 HISTORIC SITE

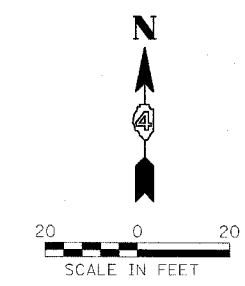
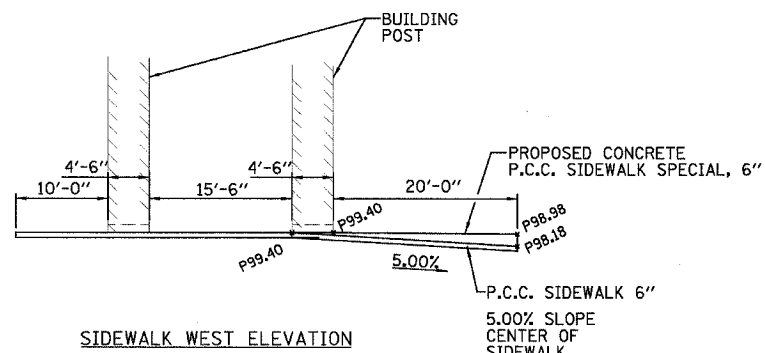
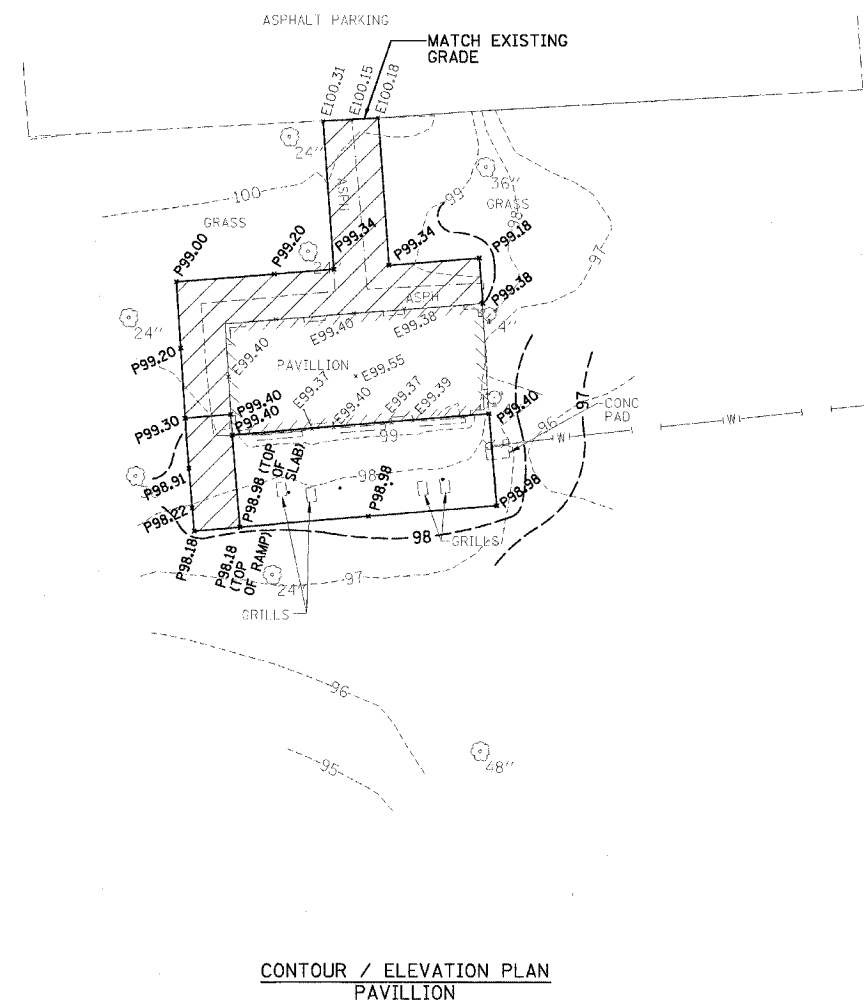
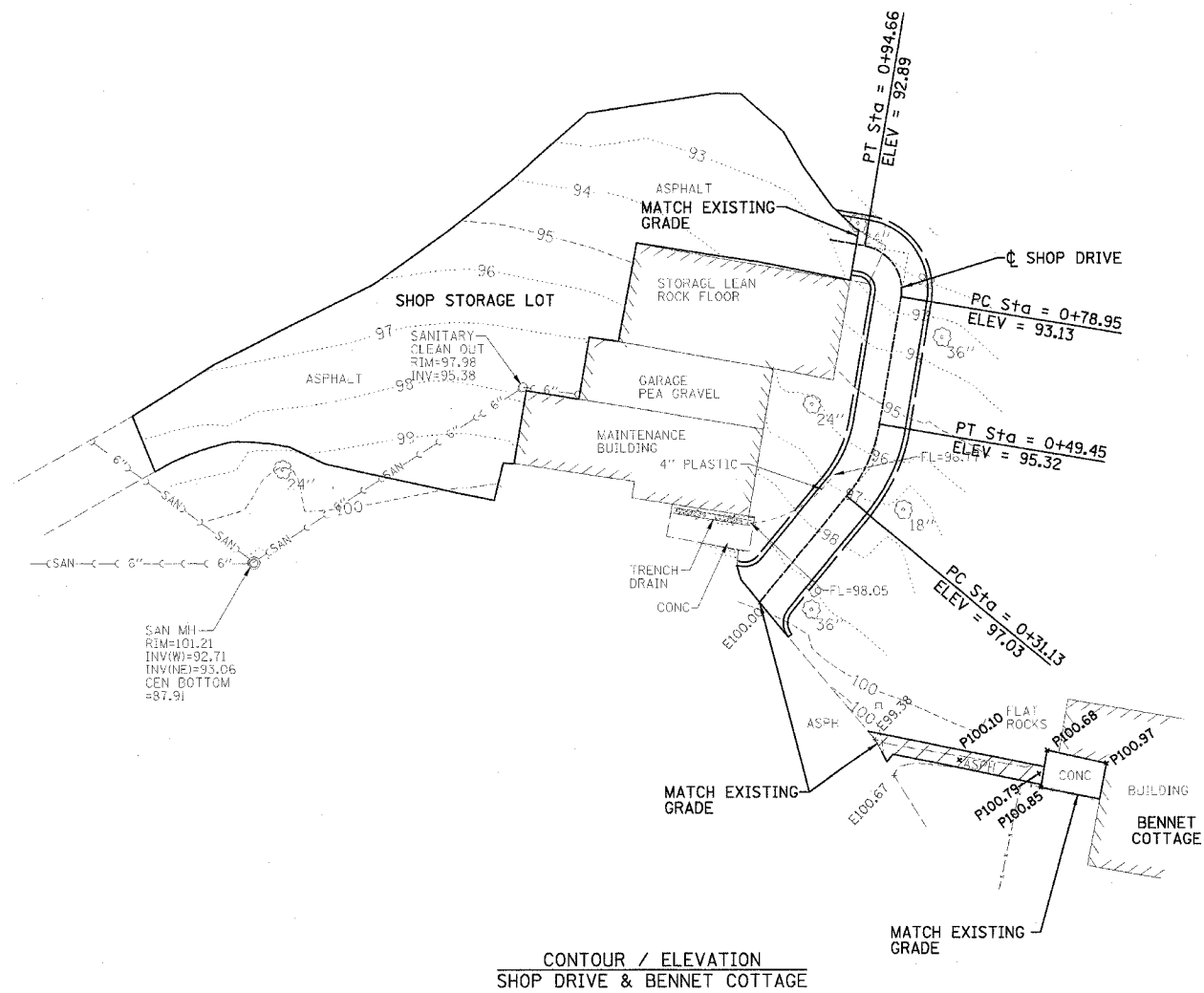
SCALE: VERT. HORIZ.  
 DATE

DRAWN BY  
 CHECKED BY

PLOT DATE = 04/21/05  
 PLOT SCALE = 1/8" = 1'-0"  
 USER NAME = BUCSEB

DESIGNED BY <b>LAW</b>	<p><b>Farnsworth</b> GROUP 2709 McGraw Drive Bloomington, Illinois 61704 309/893-8436, 309/893-1671 fax</p>	FILE NO. 24-7525
DRAWN BY <b>DRR</b>		DATE 4/22/05
CHECKED BY <b>PJM</b>		SHEET NO. 5 OF 8

F.A. RTE.	SECTION	COUNTY	TOTAL SHEETS	SHEET NO.
—	—	PEORIA	8	6
STA. TO STA.		FED. ROAD DIST. NO. ILLINOIS FED. AID PROJECT		



PLOT DATE = DATE  
 PLOT SCALE = SCALE  
 USER NAME = USER

DESIGNED BY <b>LAW</b>	 2709 McGraw Drive Bloomington, Illinois 61704 309/893-8495, 309/683-1571 fax	FILE NO. 24-7525
DRAWN BY <b>DRR</b>		DATE 4/22/05
CHECKED BY <b>PJM</b>		SHEET NO. 6 OF 8

REVISIONS	
NAME	DATE

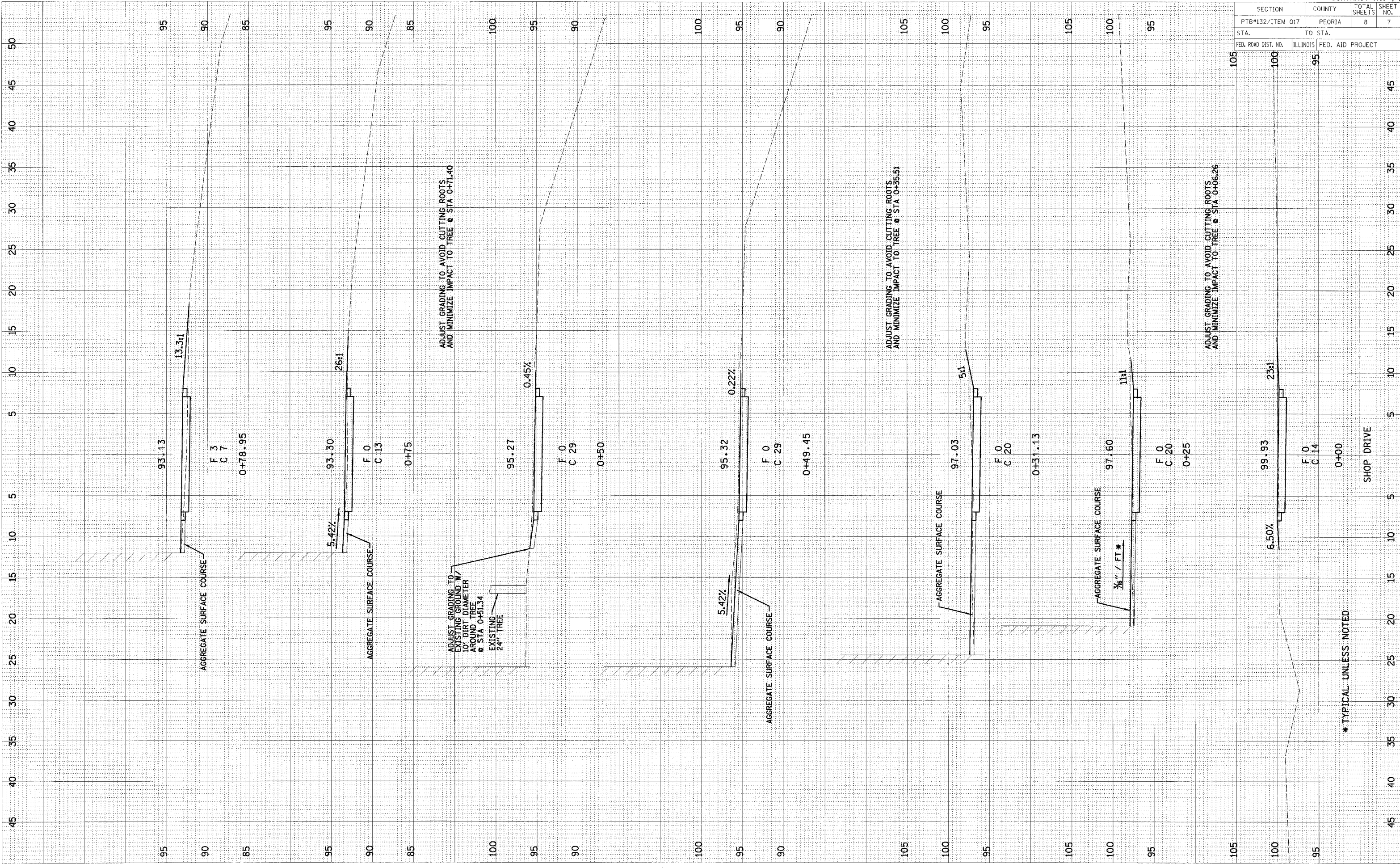
ILLINOIS DEPARTMENT OF TRANSPORTATION  
 PROPOSED CONTOUR AND ELEVATION PLAN  
 IDOT/IHPA  
 JUBILEE COLLEGE STATE HISTORIC SITE  
 SCALE: VERT. \_\_\_\_\_  
 DATE \_\_\_\_\_ HORIZ. \_\_\_\_\_  
 DRAWN BY \_\_\_\_\_  
 CHECKED BY \_\_\_\_\_

SECTION	COUNTY	TOTAL SHEETS	SHEET NO.
PTB#132/ITEM 017	PEORIA	8	7
STA.	TO STA.		
FED. ROAD DIST. NO.	ILLINOIS FED. AID PROJECT		

SURVEY	DATE	BY
NO. 100	10/15/06	J. B. BROWN

SURVEY	DATE	BY
NO. 100	10/15/06	J. B. BROWN

DATE	BY
10/15/06	J. B. BROWN



\* TYPICAL UNLESS NOTED

SHOP DRIVE

SECTION	COUNTY	TOTAL SHEETS	SHEET NO.
PTB#132/ITEM 017	PEORIA	8	8
STA. TO STA.		ILLINOIS FED. AID PROJECT	
FED. ROAD DIST. NO.			

SURVEYED \_\_\_\_\_  
 SURVEY PLOTTED \_\_\_\_\_  
 NOTE BOOK \_\_\_\_\_  
 AREAS \_\_\_\_\_  
 AREAS CHECKED \_\_\_\_\_  
 NO. \_\_\_\_\_

SURVEYED \_\_\_\_\_  
 SURVEY PLOTTED \_\_\_\_\_  
 NOTE BOOK \_\_\_\_\_  
 AREAS \_\_\_\_\_  
 AREAS CHECKED \_\_\_\_\_  
 NO. \_\_\_\_\_

PLOT DATE = \*DATE\*  
 FILE NAME = \*FILE\*  
 PLOT SCALE = \*SCALE\*  
 USER NAME = \*USER\*

