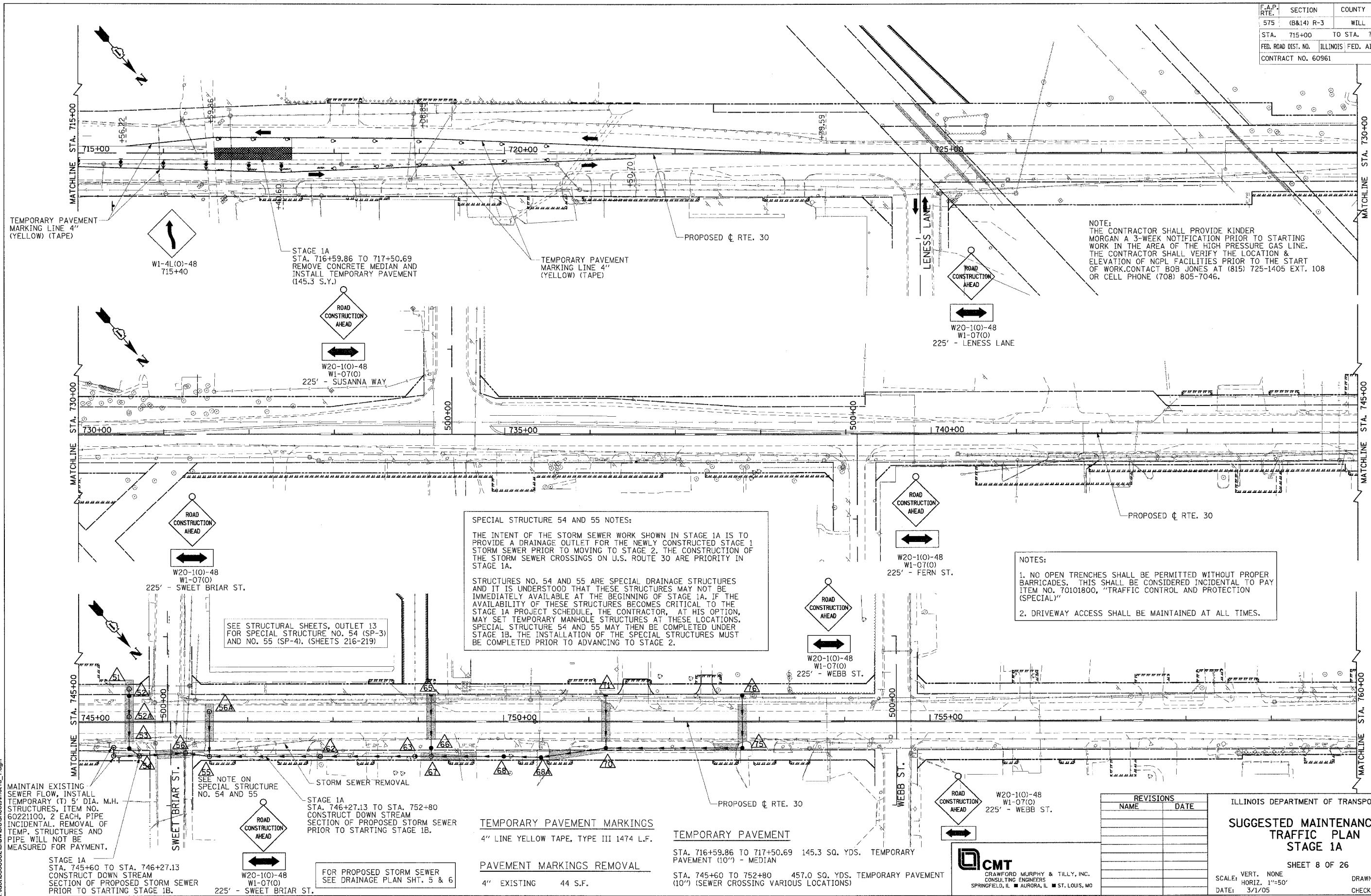


F.A.P. RTE.	SECTION	COUNTY	TOTAL SHEETS	SHEET NO.
575	(B&I4) R-3	WILL	390	42
STA. 715+00		TO STA. 760+00		
FED. ROAD DIST. NO.		ILLINOIS FED. AID PROJECT		
CONTRACT NO. 60961				



NOTE:
 THE CONTRACTOR SHALL PROVIDE KINDER MORGAN A 3-WEEK NOTIFICATION PRIOR TO STARTING WORK IN THE AREA OF THE HIGH PRESSURE GAS LINE. THE CONTRACTOR SHALL VERIFY THE LOCATION & ELEVATION OF NGPL FACILITIES PRIOR TO THE START OF WORK. CONTACT BOB JONES AT (815) 725-1405 EXT. 108 OR CELL PHONE (708) 805-7046.

SPECIAL STRUCTURE 54 AND 55 NOTES:
 THE INTENT OF THE STORM SEWER WORK SHOWN IN STAGE 1A IS TO PROVIDE A DRAINAGE OUTLET FOR THE NEWLY CONSTRUCTED STAGE 1 STORM SEWER PRIOR TO MOVING TO STAGE 2. THE CONSTRUCTION OF THE STORM SEWER CROSSINGS ON U.S. ROUTE 30 ARE PRIORITY IN STAGE 1A.
 STRUCTURES NO. 54 AND 55 ARE SPECIAL DRAINAGE STRUCTURES AND IT IS UNDERSTOOD THAT THESE STRUCTURES MAY NOT BE IMMEDIATELY AVAILABLE AT THE BEGINNING OF STAGE 1A. IF THE AVAILABILITY OF THESE STRUCTURES BECOMES CRITICAL TO THE STAGE 1A PROJECT SCHEDULE, THE CONTRACTOR, AT HIS OPTION, MAY SET TEMPORARY MANHOLE STRUCTURES AT THESE LOCATIONS. SPECIAL STRUCTURE 54 AND 55 MAY THEN BE COMPLETED UNDER STAGE 1B. THE INSTALLATION OF THE SPECIAL STRUCTURES MUST BE COMPLETED PRIOR TO ADVANCING TO STAGE 2.

NOTES:
 1. NO OPEN TRENCHES SHALL BE PERMITTED WITHOUT PROPER BARRICADES. THIS SHALL BE CONSIDERED INCIDENTAL TO PAY ITEM NO. 70101800, "TRAFFIC CONTROL AND PROTECTION (SPECIAL)"
 2. DRIVEWAY ACCESS SHALL BE MAINTAINED AT ALL TIMES.

SEE STRUCTURAL SHEETS, OUTLET 13 FOR SPECIAL STRUCTURE NO. 54 (SP-3) AND NO. 55 (SP-4), (SHEETS 216-219)

MAINTAIN EXISTING SEWER FLOW, INSTALL TEMPORARY (T) 8" DIA. M.H. STRUCTURES, ITEM NO. 60221100, 2 EACH. PIPE INCIDENTAL. REMOVAL OF TEMP. STRUCTURES AND PIPE WILL NOT BE MEASURED FOR PAYMENT.

STAGE 1A
 STA. 745+60 TO STA. 746+27.13
 CONSTRUCT DOWN STREAM SECTION OF PROPOSED STORM SEWER PRIOR TO STARTING STAGE 1B.

STAGE 1A
 STA. 746+27.13 TO STA. 752+80
 CONSTRUCT DOWN STREAM SECTION OF PROPOSED STORM SEWER PRIOR TO STARTING STAGE 1B.

TEMPORARY PAVEMENT MARKINGS
 4" LINE YELLOW TAPE, TYPE III 1474 L.F.

PAVEMENT MARKINGS REMOVAL
 4" EXISTING 44 S.F.

TEMPORARY PAVEMENT
 STA. 716+59.86 TO 717+50.69 145.3 SQ. YDS. TEMPORARY PAVEMENT (10") - MEDIAN
 STA. 745+60 TO 752+80 457.0 SQ. YDS. TEMPORARY PAVEMENT (10") (SEWER CROSSING VARIOUS LOCATIONS)

FOR PROPOSED STORM SEWER SEE DRAINAGE PLAN SHT. 5 & 6

REVISIONS	
NAME	DATE

ILLINOIS DEPARTMENT OF TRANSPORTATION
SUGGESTED MAINTENANCE OF TRAFFIC PLAN STAGE 1A
 SHEET 8 OF 26
 SCALE: VERT. NONE
 HORIZ. 1"=50'
 DATE: 3/1/05
 DRAWN BY: SNH
 CHECKED BY: SBP



I:\dot\006862\draw\ib\sheet\moftra_1.dgn