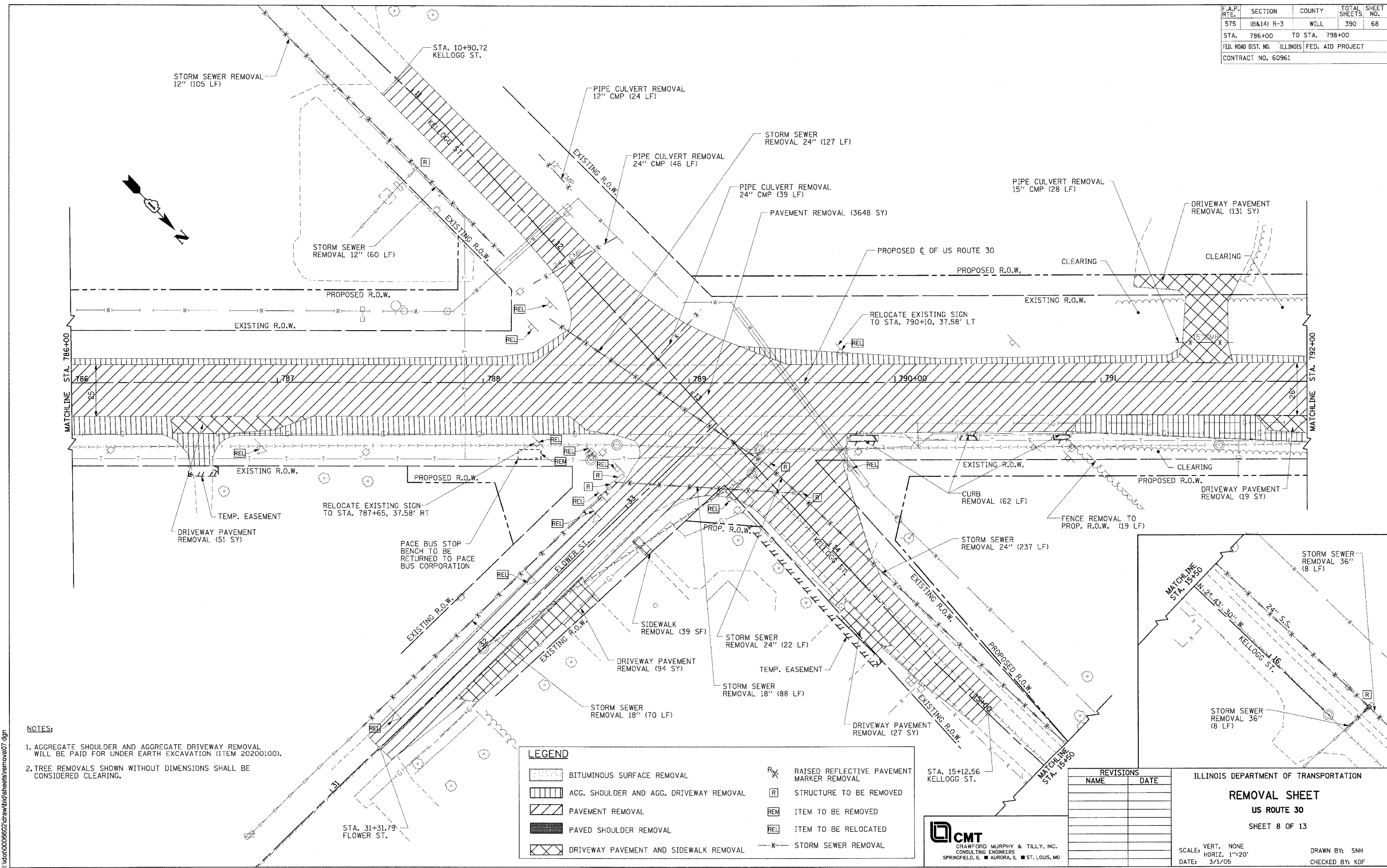


F.A.P. RTE.	SECTION	COUNTY	TOTAL SHEETS	SHEET NO.
575	(B&14) R-3	WILL	390	68
STA. 786+00		TO STA. 798+00		
FED. ROAD DIST. NO.		ILLINOIS FED. AID PROJECT		
CONTRACT NO. 60961				



- NOTES:**
1. AGGREGATE SHOULDER AND AGGREGATE DRIVEWAY REMOVAL WILL BE PAID FOR UNDER EARTH EXCAVATION (ITEM 20200100).
 2. TREE REMOVALS SHOWN WITHOUT DIMENSIONS SHALL BE CONSIDERED CLEARING.

LEGEND	
	BITUMINOUS SURFACE REMOVAL
	AGG. SHOULDER AND AGG. DRIVEWAY REMOVAL
	PAVEMENT REMOVAL
	PAVED SHOULDER REMOVAL
	DRIVEWAY PAVEMENT AND SIDEWALK REMOVAL
	RAISED REFLECTIVE PAVEMENT MARKER REMOVAL
	STRUCTURE TO BE REMOVED
	ITEM TO BE REMOVED
	ITEM TO BE RELOCATED
	STORM SEWER REMOVAL

REVISIONS	
NAME	DATE

CMT
 CRAWFORD MURPHY & TILLY, INC.
 CONSULTING ENGINEERS
 SPRINGFIELD, IL ■ AURORA, IL ■ ST. LOUIS, MO

ILLINOIS DEPARTMENT OF TRANSPORTATION
REMOVAL SHEET
 US ROUTE 30
 SHEET 8 OF 13

SCALE: VERT. NONE
 HORIZ. 1"=20'
 DATE: 3/1/05

DRAWN BY: SNH
 CHECKED BY: KDF

I:\dot0006602\draw\bid\sheet\removal07.dgn