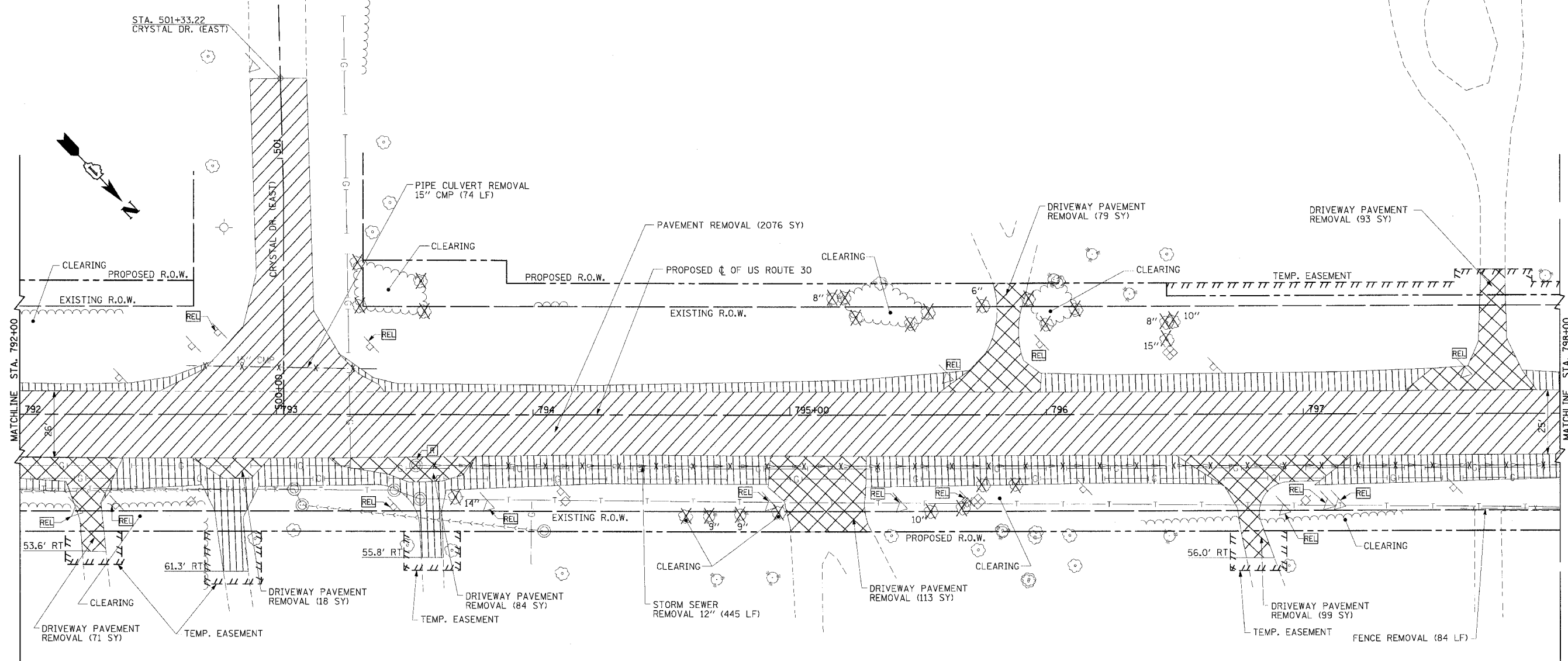


F.A.P. RTE.	SECTION	COUNTY	TOTAL SHEETS	SHEET NO.
575	(B&I4) R-3	WILL	390	69
STA. 786+00		TO STA. 798+00		
FED. ROAD DIST. NO.		ILLINOIS FED. AID PROJECT		
CONTRACT NO. 60961				

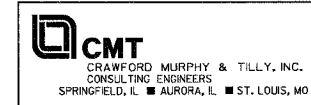


LEGEND			
	BITUMINOUS SURFACE REMOVAL		RAISED REFLECTIVE PAVEMENT MARKER REMOVAL
	AGG. SHOULDER AND AGG. DRIVEWAY REMOVAL		STRUCTURE TO BE REMOVED
	PAVEMENT REMOVAL		ITEM TO BE REMOVED
	PAVED SHOULDER REMOVAL		ITEM TO BE RELOCATED
	DRIVEWAY PAVEMENT AND SIDEWALK REMOVAL		STORM SEWER REMOVAL

- NOTES:
- AGGREGATE SHOULDER AND AGGREGATE DRIVEWAY REMOVAL WILL BE PAID FOR UNDER EARTH EXCAVATION (ITEM 20200100).
  - TREE REMOVALS SHOWN WITHOUT DIMENSIONS SHALL BE CONSIDERED CLEARING.

REVISIONS	
NAME	DATE

ILLINOIS DEPARTMENT OF TRANSPORTATION  
**REMOVAL SHEET**  
**US ROUTE 30**  
 SHEET 9 OF 13



SCALE: VERT. NONE  
 HORIZ. 1"=20'  
 DATE: 3/1/05  
 DRAWN BY: SNH  
 CHECKED BY: KDF

I:\dot0006602\draw\bid\sheet\removal07b.dgn