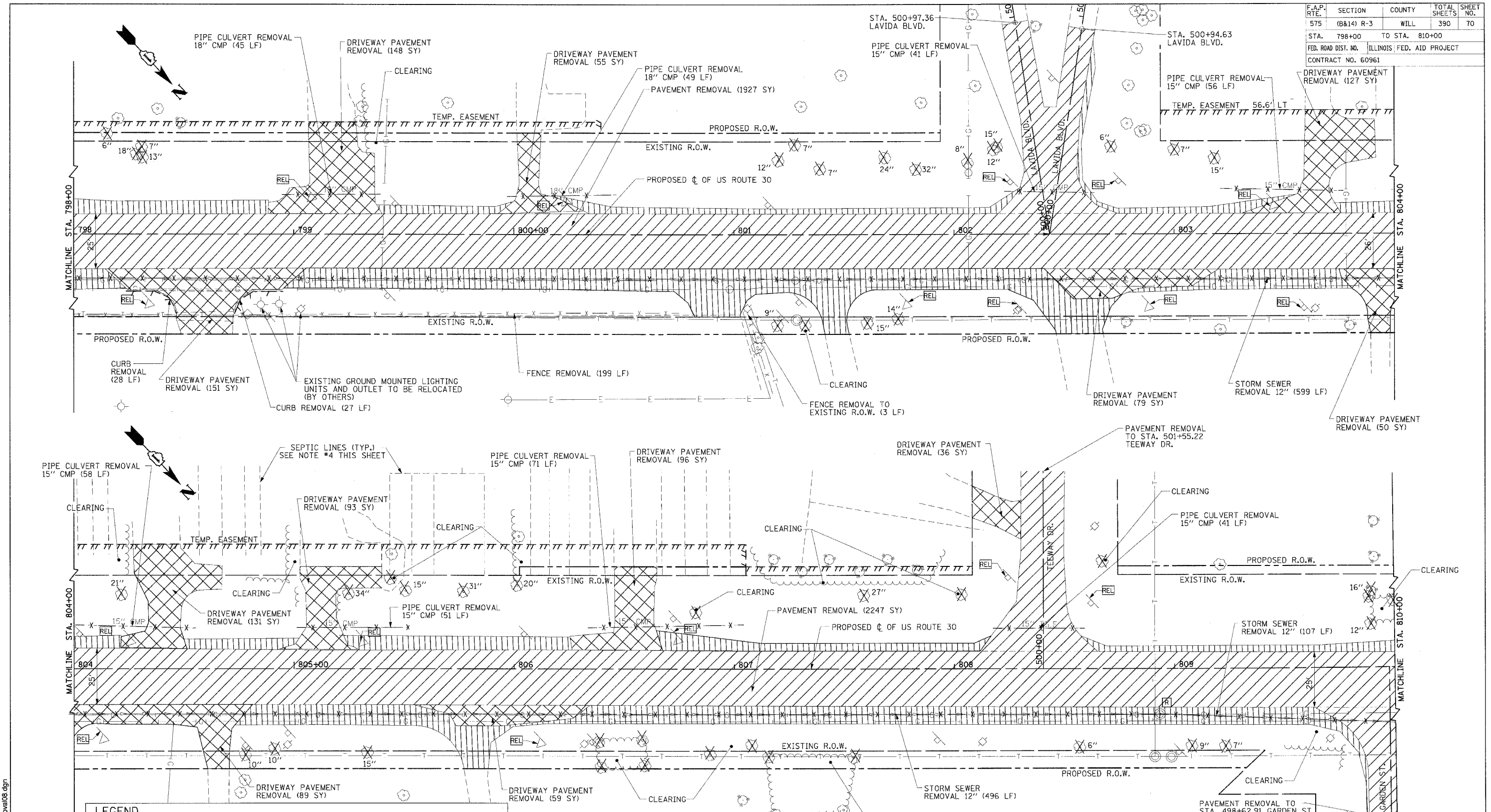


F.A.P. RTE.	SECTION	COUNTY	TOTAL SHEETS	SHEET NO.
575	(B&I) R-3	WILL	390	70
STA. 798+00	TO STA. 810+00			
FED. ROAD DIST. NO.		ILLINOIS FED. AID PROJECT		
		CONTRACT NO. 60961		



LEGEND	
	BITUMINOUS SURFACE REMOVAL
	AGG. SHOULDER AND AGG. DRIVEWAY REMOVAL
	PAVEMENT REMOVAL
	PAVED SHOULDER REMOVAL
	DRIVEWAY PAVEMENT AND SIDEWALK REMOVAL
	RAISED REFLECTIVE PAVEMENT MARKER REMOVAL
	STRUCTURE TO BE REMOVED
	ITEM TO BE REMOVED
	ITEM TO BE RELOCATED
	STORM SEWER REMOVAL

- NOTES:**
- REFER TO CORRESPONDING PLAN & PROFILE SHEETS FOR STREET LIMITS OF CONSTRUCTION.
  - AGGREGATE SHOULDER AND AGGREGATE DRIVEWAY REMOVAL WILL BE PAID FOR UNDER EARTH EXCAVATION (ITEM 20200100).
  - TREE REMOVALS SHOWN WITHOUT DIMENSIONS SHALL BE CONSIDERED CLEARING.
  - THE CONTRACTOR SHALL EXERCISE CAUTION WHEN WORKING IN THE AREA OF EXISTING SEPTIC LINES TO AVOID DAMAGING LINES. NO HEAVY EQUIPMENT SHALL BE ALLOWED WITHIN TEMPORARY EASEMENTS.

REVISIONS	
NAME	DATE

ILLINOIS DEPARTMENT OF TRANSPORTATION

**REMOVAL SHEET**

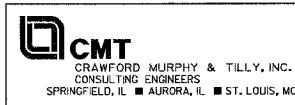
**US ROUTE 30**

SHEET 10 OF 13

SCALE: VERT. NONE  
HORIZ. 1"=20'

DATE: 3/1/05

DRAWN BY: SNH  
CHECKED BY: KDF



I:\work\060602\draw\bid\sheet\removal08.dgn