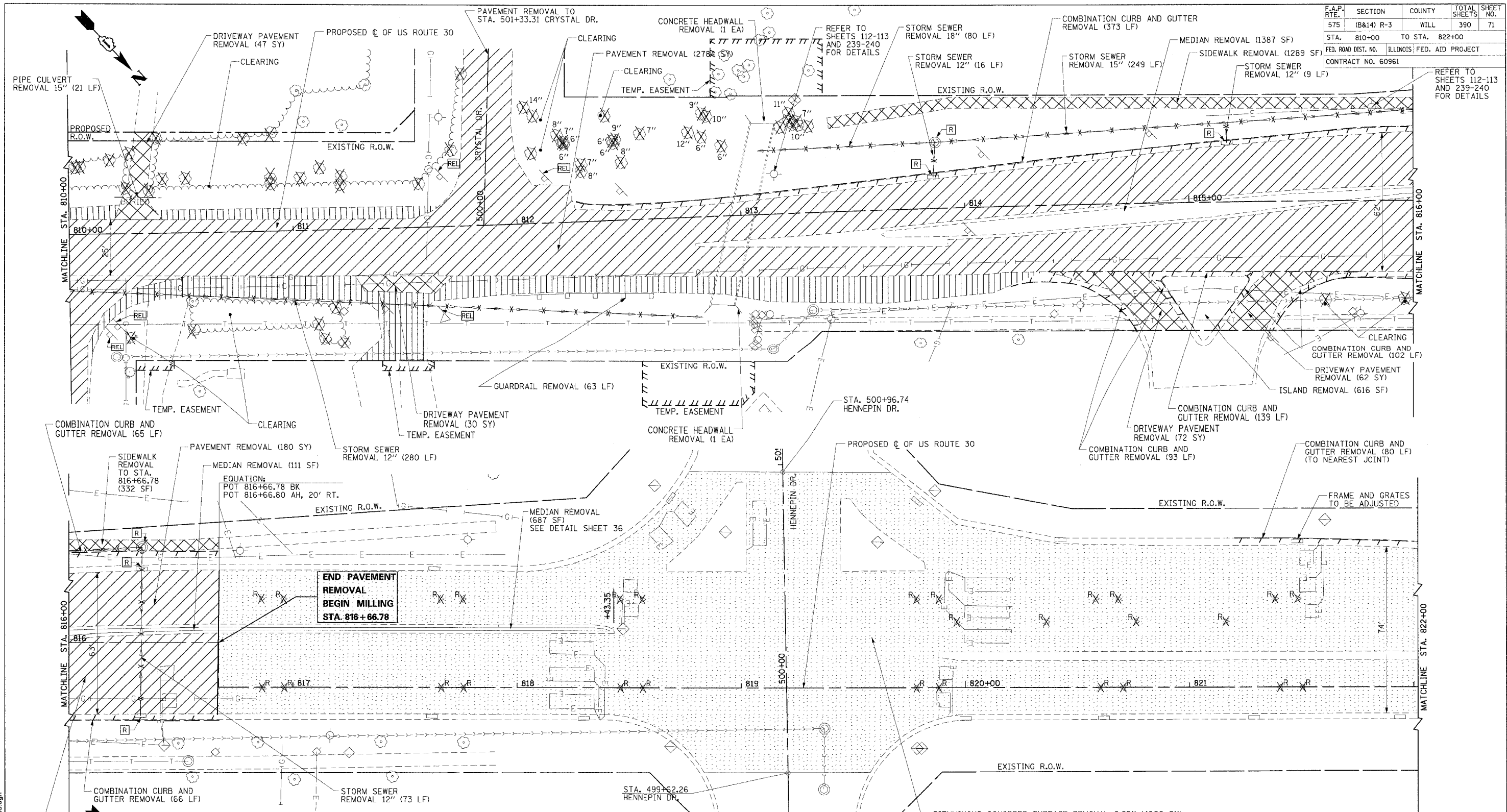


F.A.P. RTE.	SECTION	COUNTY	TOTAL SHEETS	SHEET NO.
575	(B&I) R-3	WILL	390	71
STA. 810+00		TO STA. 822+00		
FED. ROAD DIST. NO.		ILLINOIS FED. AID PROJECT		
CONTRACT NO. 60961		REFER TO SHEETS 112-113 AND 239-240 FOR DETAILS		



LEGEND	
	BITUMINOUS SURFACE REMOVAL
	AGG. SHOULDER AND AGG. DRIVEWAY REMOVAL
	PAVEMENT REMOVAL
	PAVED SHOULDER REMOVAL
	DRIVEWAY PAVEMENT AND SIDEWALK REMOVAL
	RAISED REFLECTIVE PAVEMENT MARKER REMOVAL
	STRUCTURE TO BE REMOVED
	ITEM TO BE REMOVED
	ITEM TO BE RELOCATED
	STORM SEWER REMOVAL

- NOTES:
1. RAISED REFLECTIVE PAVEMENT MARKERS TO BE REMOVED PRIOR TO BITUMINOUS CONCRETE SURFACE REMOVAL.
 2. DETECTOR LOOP REMOVAL WILL BE INCIDENTAL TO THE BITUMINOUS CONCRETE SURFACE REMOVAL. PROPOSED LOCATIONS SHOWN ON SHEET 183.
 3. REFER TO CORRESPONDING PLAN & PROFILE SHEETS FOR SIDE STREET LIMITS OF CONSTRUCTION.
 4. AGGREGATE SHOULDER AND AGGREGATE DRIVEWAY REMOVAL WILL BE PAID FOR UNDER EARTH EXCAVATION (ITEM 20200100).
 5. TREE REMOVALS WITHOUT DIMENSIONS SHALL BE CONSIDERED CLEARING.

REVISIONS	
NAME	DATE



ILLINOIS DEPARTMENT OF TRANSPORTATION

REMOVAL SHEET

US ROUTE 30

SHEET 11 OF 13

SCALE: VERT. NONE
HORIZ. 1"=20'
DATE: 3/1/05

DRAWN BY: SNH
CHECKED BY: KDF

I:\dot\006602\draw\bid\sheet\removal09.dgn