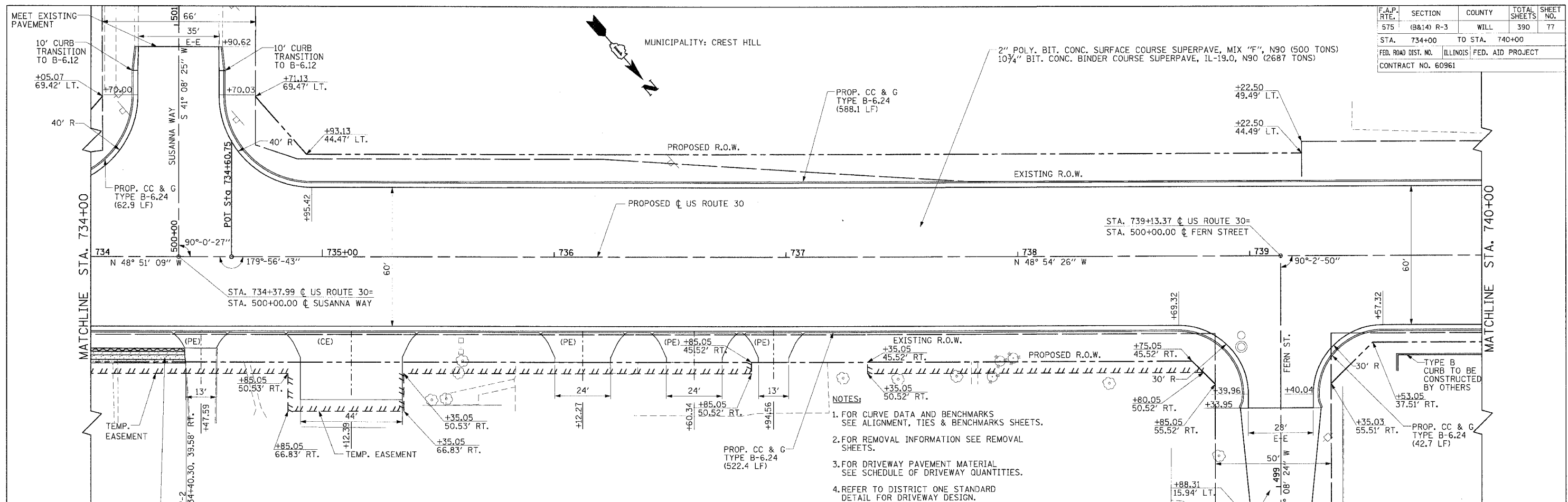
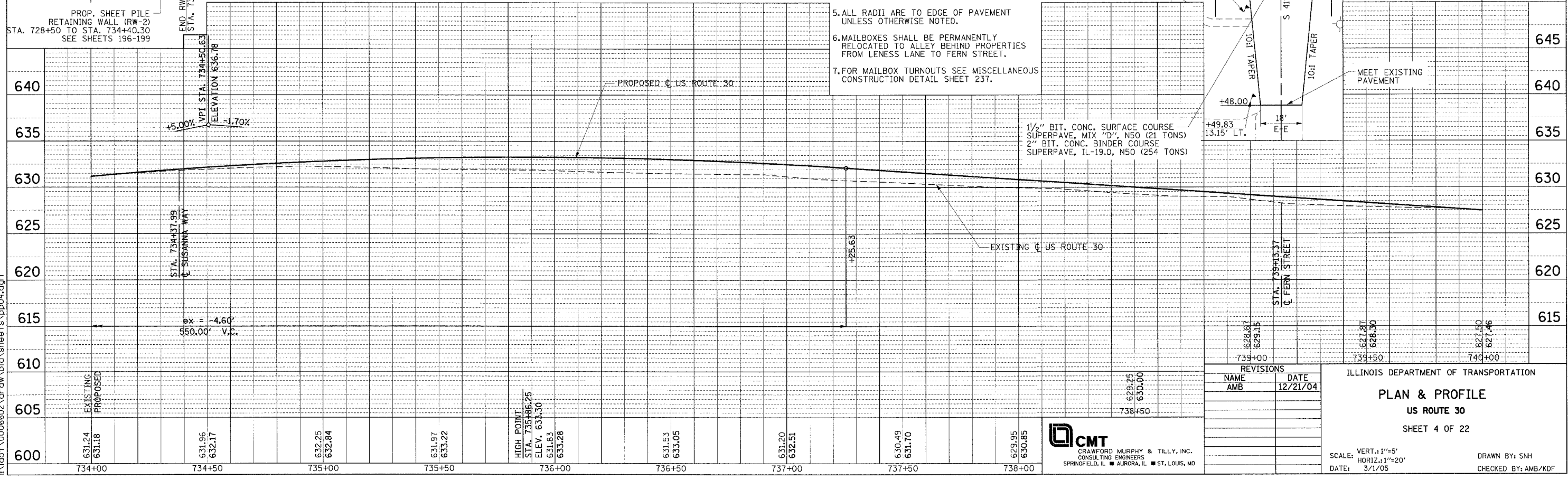


F.A.P. RTE.	SECTION	COUNTY	TOTAL SHEETS	SHEET NO.
575	(B&I) R-3	WILL.	390	77
STA. 734+00		TO STA. 740+00		
FED. ROAD DIST. NO.		ILLINOIS FED. AID PROJECT		
CONTRACT NO. 60961				



- NOTES:
- FOR CURVE DATA AND BENCHMARKS SEE ALIGNMENT, TIES & BENCHMARK SHEETS.
  - FOR REMOVAL INFORMATION SEE REMOVAL SHEETS.
  - FOR DRIVEWAY PAVEMENT MATERIAL SEE SCHEDULE OF DRIVEWAY QUANTITIES.
  - REFER TO DISTRICT ONE STANDARD DETAIL FOR DRIVEWAY DESIGN.
  - ALL RADII ARE TO EDGE OF PAVEMENT UNLESS OTHERWISE NOTED.
  - MAILBOXES SHALL BE PERMANENTLY RELOCATED TO ALLEY BEHIND PROPERTIES FROM LENESS LANE TO FERN STREET.
  - FOR MAILBOX TURNOUTS SEE MISCELLANEOUS CONSTRUCTION DETAIL SHEET 237.



DATE	BY
PLAN	REVISIONS
	NOTED
	ALIGNED
	CHECKED
	DATE FILE NAME
	NO.

DATE	BY
PROFILE	REVISIONS
	GRADES CHECKED
	STRUCTURE
	DATE FILE NAME
	NO.

I:\dot\0006602\draw\bid\sheet\pp04.dgn

STATION	EXISTING	PROPOSED
734+00	631.24	631.18
734+50	631.96	632.17
735+00	632.25	632.84
735+50	631.97	633.22
736+00	HIGH POINT STA. 735+86.25 ELEV. 633.30	631.83
736+50	631.53	633.05
737+00	631.20	632.51
737+50	630.49	631.70
738+00	629.95	630.85

REVISIONS	
NAME	DATE
AMB	12/21/04

ILLINOIS DEPARTMENT OF TRANSPORTATION

**PLAN & PROFILE**

**US ROUTE 30**

SHEET 4 OF 22

SCALE: VERT.: 1"=5'  
HORIZ.: 1"=20'

DATE: 3/1/05

DRAWN BY: SNH  
CHECKED BY: AMB/KDF

**CMT**  
CRAWFORD MURPHY & TILLY, INC.  
CONSULTING ENGINEERS  
SPRINGFIELD, IL ■ AURORA, IL ■ ST. LOUIS, MO