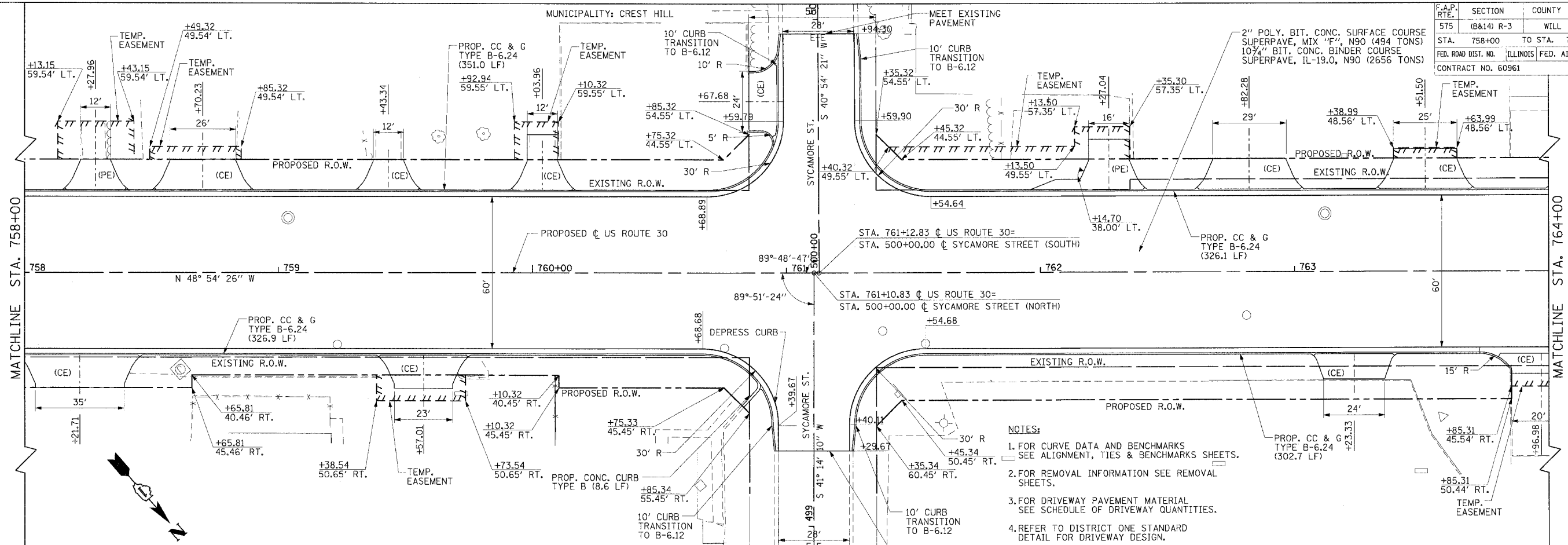
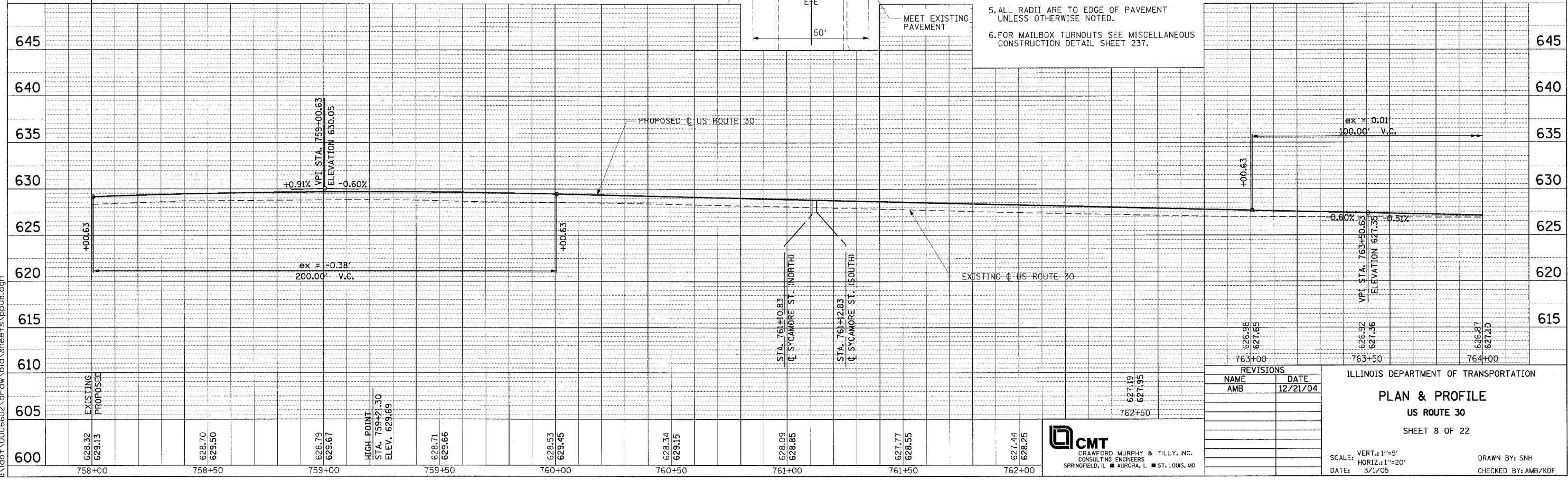


F.A.P. RTE.	SECTION	COUNTY	TOTAL SHEETS	SHEET NO.
575	(B&14) R-3	WILL	390	81
STA.	758+00	TO STA.	764+00	
FED. ROAD DIST. NO.	ILLINOIS	FED. AID PROJECT		
CONTRACT NO.	60961			



- NOTES:
1. FOR CURVE DATA AND BENCHMARKS SEE ALIGNMENT, TIES & BENCHMARKS SHEETS.
  2. FOR REMOVAL INFORMATION SEE REMOVAL SHEETS.
  3. FOR DRIVEWAY PAVEMENT MATERIAL SEE SCHEDULE OF DRIVEWAY QUANTITIES.
  4. REFER TO DISTRICT ONE STANDARD DETAIL FOR DRIVEWAY DESIGN.
  5. ALL RADII ARE TO EDGE OF PAVEMENT UNLESS OTHERWISE NOTED.
  6. FOR MAILBOX TURNOUTS SEE MISCELLANEOUS CONSTRUCTION DETAIL SHEET 237.



DATE	BY
DATE	BY

DATE	BY
DATE	BY

REVISIONS	
NAME	DATE
AMB	12/21/04

ILLINOIS DEPARTMENT OF TRANSPORTATION  
**PLAN & PROFILE**  
**US ROUTE 30**  
 SHEET 8 OF 22

**CMT**  
 CRAWFORD MURPHY & TILLY, INC.  
 CONSULTING ENGINEERS  
 SPRINGFIELD, IL ■ AURORA, IL ■ ST. LOUIS, MO

SCALE: VERT.: 1"=5'  
 HORIZ.: 1"=20'  
 DATE: 3/1/05  
 DRAWN BY: SNH  
 CHECKED BY: AMB/KDF

H:\dot\0006602\draw\bid\sheet8.dgn