

F.A.P. RTE.	SECTION	COUNTY	TOTAL SHEETS	SHEET NO.
575	(B&I4) R-3	WILL	390	84
STA.	774+00	TO STA.	780+00	
FED. ROAD DIST. NO.	ILLINOIS FED. AID PROJECT			
CONTRACT NO. 60961				

- NOTES:
- FOR CURVE DATA AND BENCHMARKS SEE ALIGNMENT, TIES & BENCHMARKS SHEETS.
 - FOR REMOVAL INFORMATION SEE REMOVAL SHEETS.
 - FOR DRIVEWAY PAVEMENT MATERIAL SEE SCHEDULE OF DRIVEWAY QUANTITIES.
 - REFER TO DISTRICT ONE STANDARD DETAIL FOR DRIVEWAY DESIGN.
 - ALL RADII ARE TO EDGE OF PAVEMENT UNLESS OTHERWISE NOTED.
 - FOR MAILBOX TURNOUTS SEE MISCELLANEOUS CONSTRUCTION DETAIL SHEET 237.

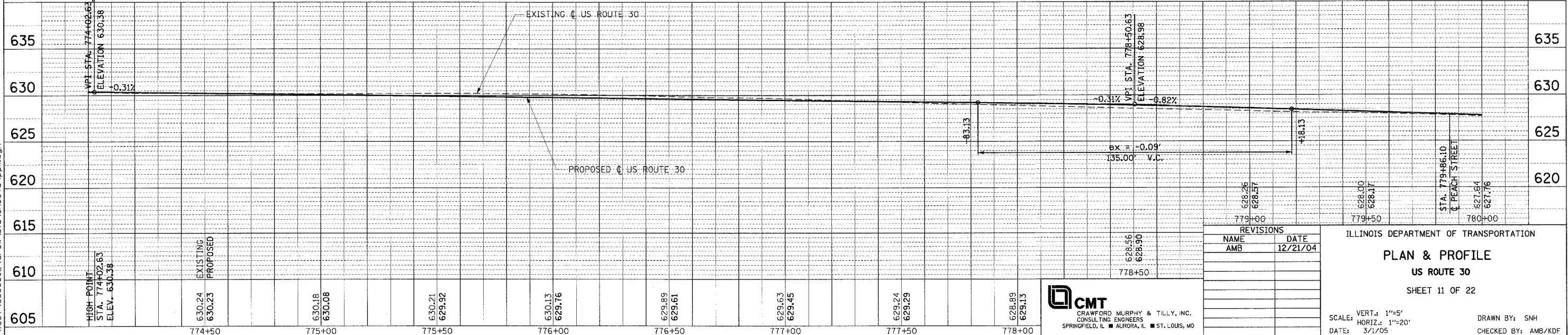
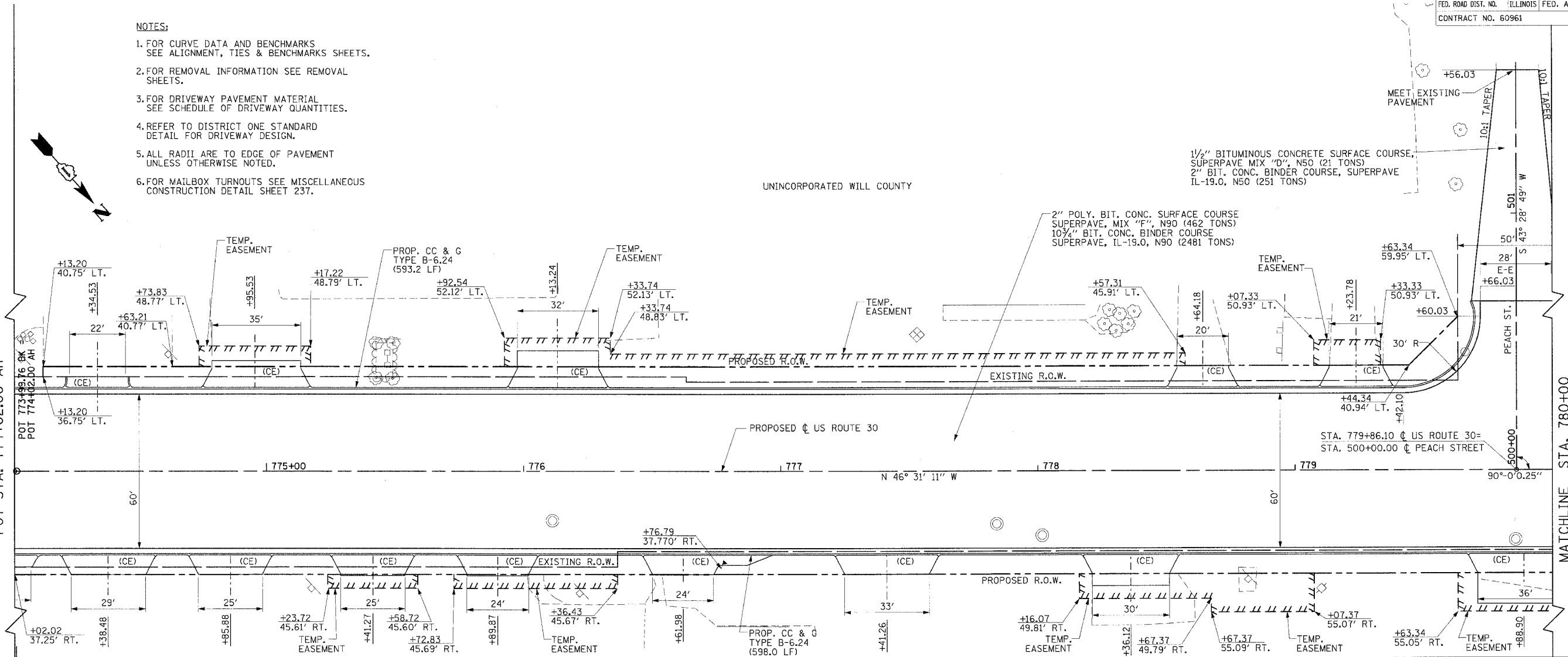
UNINCORPORATED WILL COUNTY

1 1/2" BITUMINOUS CONCRETE SURFACE COURSE
SUPERPAVE MIX "D", N50 (21 TONS)
2" BIT. CONC. BINDER COURSE, SUPERPAVE
IL-19.0, N50 (251 TONS)

2" POLY. BIT. CONC. SURFACE COURSE
SUPERPAVE MIX "F", N90 (462 TONS)
10 3/4" BIT. CONC. BINDER COURSE
SUPERPAVE, IL-19.0, N90 (2481 TONS)

MATCHLINE STA. EQUATION
POT STA. 773+99.76 BK =
POT STA. 774+02.00 AH

MATCHLINE STA. 780+00



REVISIONS	NAME	DATE
1	AMB	12/21/04

ILLINOIS DEPARTMENT OF TRANSPORTATION
PLAN & PROFILE
US ROUTE 30
 SHEET 11 OF 22

SCALE: VERT: 1"=5'
 HORIZ: 1"=20'
 DATE: 3/1/05

DRAWN BY: SMH
 CHECKED BY: AMB/KDF

CMT
 CRAWFORD MURPHY & TILLY, INC.
 CONSULTING ENGINEERS
 SPRINGFIELD, IL ■ AURORA, IL ■ ST. LOUIS, MO

PLAN	REVISIONS	DATE
NO.	BY	

PROFILE	REVISIONS	DATE
NO.	BY	

H:\dot\006602\draw\pic\sheet11\ppl.dgn