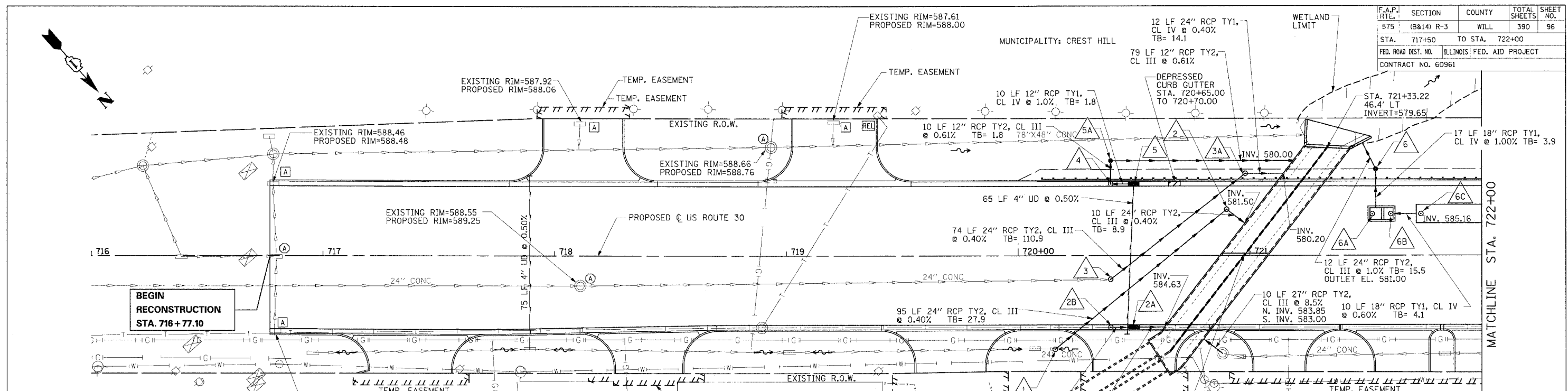
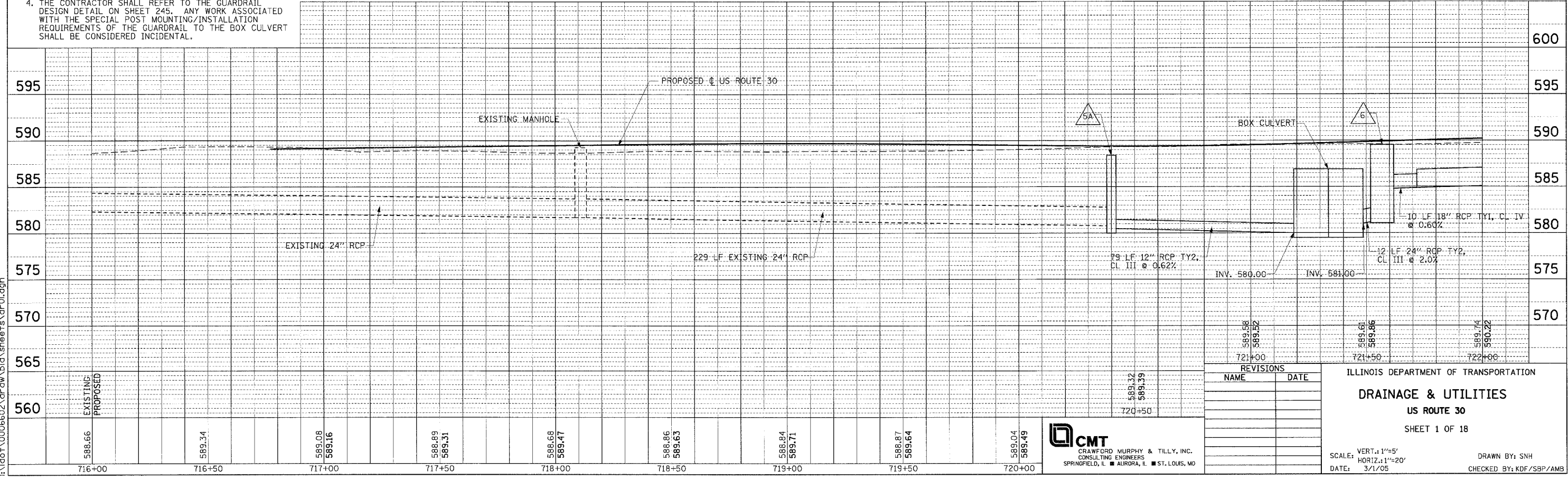


F.A.P. RTE.	SECTION	COUNTY	TOTAL SHEETS	SHEET NO.
575	(B&I4) R-3	WILL	390	96
STA. 717+50	TO STA. 722+00			
FED. ROAD DIST. NO.	ILLINOIS FED. AID PROJECT			
CONTRACT NO. 60961				



- NOTES:**
- SSWMR = STORM SEWER WATER MAIN REQUIREMENT.
  - ALL EXISTING POWER POLES, TELEPHONE SPLICE BOXES, GAS VALVES, TELEPHONE MANHOLES, AND LIGHT POLES SHALL BE RELOCATED BY OTHERS UNLESS OTHERWISE NOTED.
  - THE CONTRACTOR SHALL LOCATE PROPOSED STORM SEWER PRIOR TO THE INSTALLATION OF THE PROPOSED GUARDRAIL POSTS IN ORDER TO AVOID CONFLICTS WITH THE POST.
  - THE CONTRACTOR SHALL REFER TO THE GUARDRAIL DESIGN DETAIL ON SHEET 245. ANY WORK ASSOCIATED WITH THE SPECIAL POST MOUNTING/INSTALLATION REQUIREMENTS OF THE GUARDRAIL TO THE BOX CULVERT SHALL BE CONSIDERED INCIDENTAL.
  - SEE DETAIL OF SPECIAL STRUCTURE SP-1 (STRUCTURES 6A AND 6B).
  - PROPOSED PIPE UNDERDRAIN CONNECTIONS TO DRAINAGE STRUCTURES SHALL NOT BE PAID FOR SEPARATELY BUT SHALL BE INCLUDED IN THE COST OF PIPE UNDERDRAIN 4" (MODIFIED).



REVISIONS		ILLINOIS DEPARTMENT OF TRANSPORTATION	
NAME	DATE	DRAINAGE & UTILITIES	
		US ROUTE 30	
		SHEET 1 OF 18	
		SCALE: VERT.: 1"=5'	DRAWN BY: SNH
		HORIZ.: 1"=20'	CHECKED BY: KDF/SBP/AMS
		DATE: 3/1/05	

**CMT**  
CRAWFORD MURPHY & TILLY, INC.  
CONSULTING ENGINEERS  
SPRINGFIELD, IL ■ AURORA, IL ■ ST. LOUIS, MO

DATE	BY	REVISION

DATE	BY	REVISION

I:\dot\0006602\dr\aw\bid\sheet\dr01.dgn