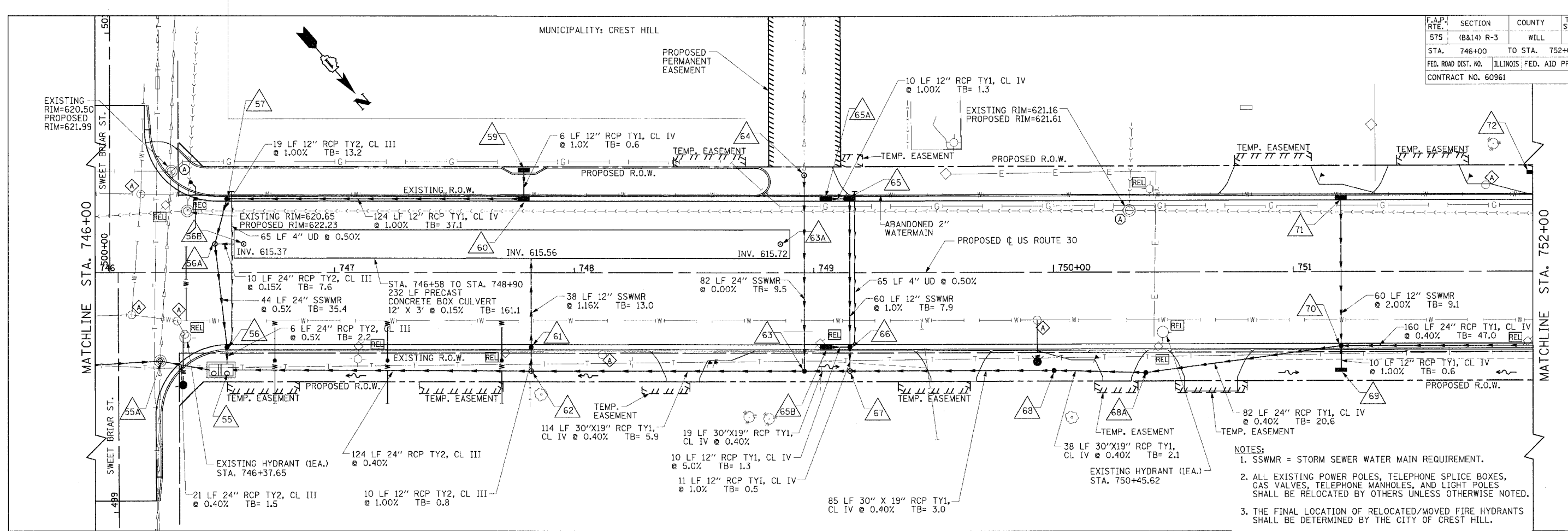
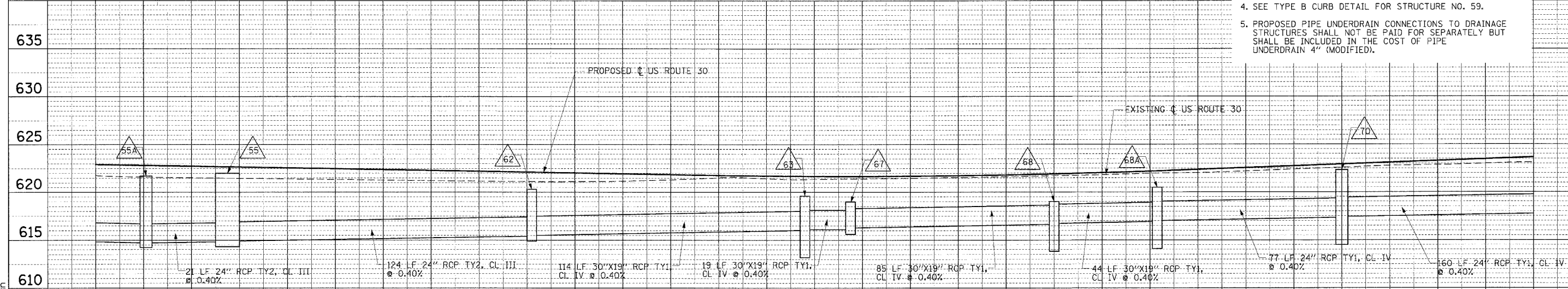


F.A.P. RTE.	SECTION	COUNTY	TOTAL SHEETS	SHEET NO.
575	(B&I4) R-3	WILL	390	101
STA. 746+00 TO STA. 752+00				
FED. ROAD DIST. NO. ILLINOIS		FED. AID PROJECT		
CONTRACT NO. 60961				



- NOTES:**
1. SSWMR = STORM SEWER WATER MAIN REQUIREMENT.
  2. ALL EXISTING POWER POLES, TELEPHONE SPICE BOXES, GAS VALVES, TELEPHONE MANHOLES, AND LIGHT POLES SHALL BE RELOCATED BY OTHERS UNLESS OTHERWISE NOTED.
  3. THE FINAL LOCATION OF RELOCATED/MOVED FIRE HYDRANTS SHALL BE DETERMINED BY THE CITY OF CREST HILL.
  4. SEE TYPE B CURB DETAIL FOR STRUCTURE NO. 59.
  5. PROPOSED PIPE UNDERDRAIN CONNECTIONS TO DRAINAGE STRUCTURES SHALL NOT BE PAID FOR SEPARATELY BUT SHALL BE INCLUDED IN THE COST OF PIPE UNDERDRAIN 4" (MODIFIED).



PROPOSED REMOVAL AND REPLACEMENT OF WATERMAIN STORM SEWER CONFLICT									
NO.	LOCATION	SS CONFLICT ELEVATION	WATERMAIN ELEVATION EXIST. ±	REQ. ±	LINEAL FOOT	TBF*	DRAWING STRUCTURE REF.	ISOLATION VALVES* APPROX LOCATION	
15	746+54 20' R	615.03	615.80	613.08	28	39.3	56 / 56A	746+20 18' R	754+32 20' R
16	747+82 20' R	616.95	615.04	613.09	25	30.5	61 / CULV.	746+20 18' R	754+32 20' R
17	748+96 20' R	615.88	615.00	613.53	25	28.6	63 / 64	746+20 18' R	754+32 20' R
18	749+15 20' R	617.10	615.00	615.15	---	---	67 / 65	746+20 18' R	754+32 20' R
19	751+20 20' R	618.23	616.50	616.28	22	22	70 / 71	746+20 18' R	754+32 20' R

\* GRANULAR BACKFILL FA-6 GRADATION UNDER THE PAVEMENT (INCIDENTAL TO THE WATERMAIN) PIPE AND FITTINGS DUCTILE IRON C-110 JOINTS WITH RETAINING GLANDS CONFIRM EXISTING WATER LOCATION AND ELEVATION ISOLATION VALVES TO BE COORDINATED WITH THE CITY OF CREST HILL PUBLIC WORKS DEPARTMENT.

PLAN	DATE	BY
REVISIONS		
NO.		

PROFILE	DATE	BY
REVISIONS		
NO.		

REVISIONS	
NAME	DATE

ILLINOIS DEPARTMENT OF TRANSPORTATION  
**DRAINAGE & UTILITIES**  
 US ROUTE 30  
 SHEET 6 OF 18

**CMT**  
 CRAWFORD MURPHY & TILLY, INC.  
 CONSULTING ENGINEERS  
 SPRINGFIELD, IL ■ AURORA, IL ■ ST. LOUIS, MO

SCALE: VERT.: 1"=5'  
 HORIZ.: 1"=20'  
 DATE: 3/1/05  
 DRAWN BY: SNH  
 CHECKED BY: KDF/SBP/AMB