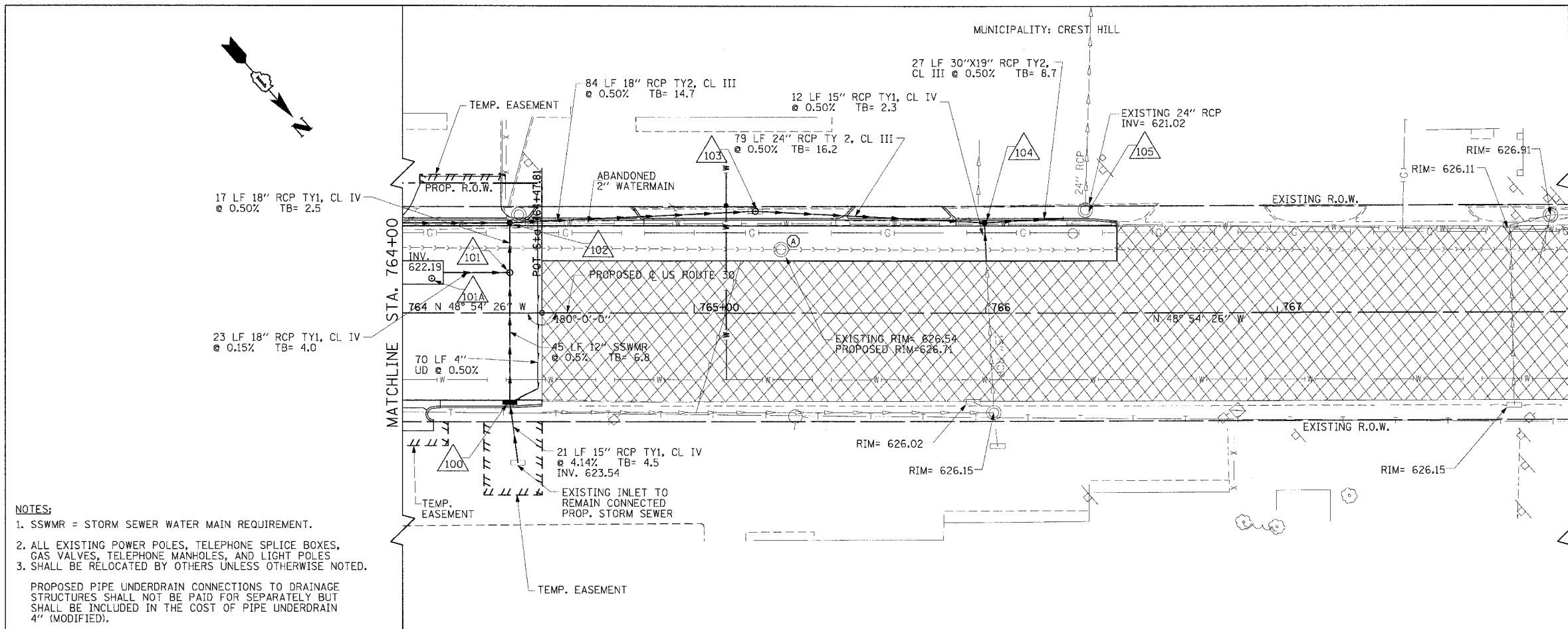


F.A.P. RTE.	SECTION	COUNTY	TOTAL SHEETS	SHEET NO.
575	(B&I) R-3	WILL	390	104
STA. 764+00		TO STA. 768+00		
FED. ROAD DIST. NO.		ILLINOIS FED. AID PROJECT		
CONTRACT NO. 60961				

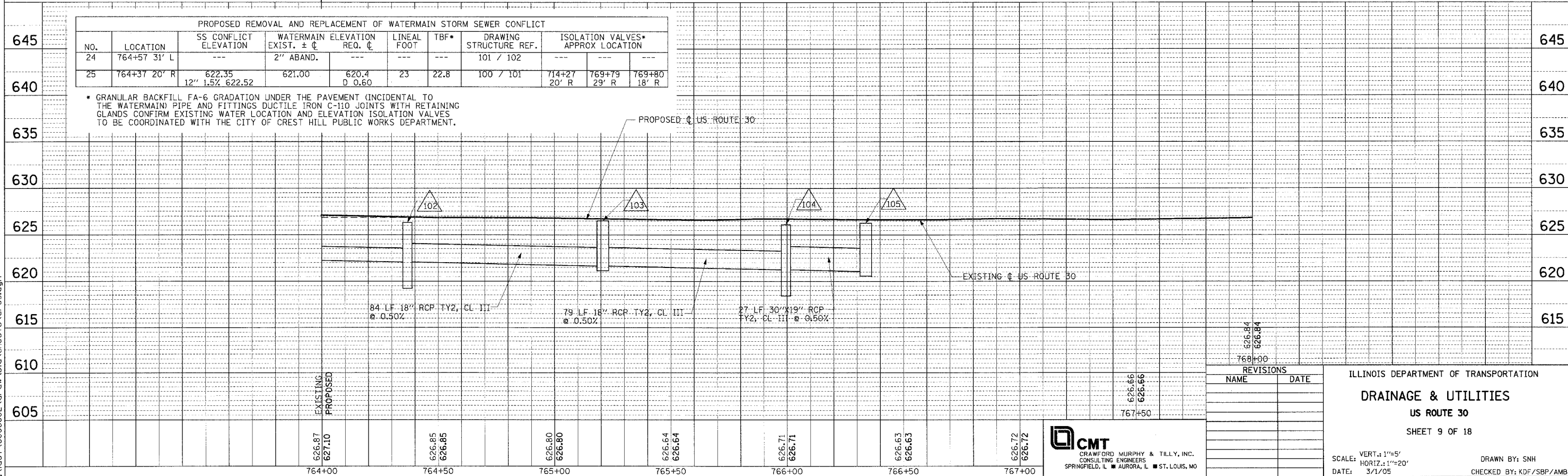
PLAN	DATE
BY	
REVISIONS	
NO.	
DESCRIPTION	
DATE	
BY	
DATE	
BY	
DATE	



- NOTES:**
- SSWMR = STORM SEWER WATER MAIN REQUIREMENT.
 - ALL EXISTING POWER POLES, TELEPHONE SPLICE BOXES, GAS VALVES, TELEPHONE MANHOLES, AND LIGHT POLES SHALL BE RELOCATED BY OTHERS UNLESS OTHERWISE NOTED.
 - PROPOSED PIPE UNDERDRAIN CONNECTIONS TO DRAINAGE STRUCTURES SHALL NOT BE PAID FOR SEPARATELY BUT SHALL BE INCLUDED IN THE COST OF PIPE UNDERDRAIN 4" (MODIFIED).

PROPOSED REMOVAL AND REPLACEMENT OF WATERMAIN STORM SEWER CONFLICT								
NO.	LOCATION	SS CONFLICT ELEVATION	WATERMAIN EXIST. ±	ELEVATION REQ. ±	LINEAL FOOT	TBF*	DRAWING STRUCTURE REF.	ISOLATION VALVES* APPROX LOCATION
24	764+57 31' L	---	2" ABAND.	---	---	---	101 / 102	---
25	764+37 20' R	622.35 12" 1.5% 622.52	621.00	620.4 D 0.60	23	22.8	100 / 101	714+27 20' R 769+79 29' R 769+80 18' R

* GRANULAR BACKFILL FA-6 GRADATION UNDER THE PAVEMENT (INCIDENTAL TO THE WATERMAIN) PIPE AND FITTINGS DUCTILE IRON C-110 JOINTS WITH RETAINING GLANDS CONFIRM EXISTING WATER LOCATION AND ELEVATION ISOLATION VALVES TO BE COORDINATED WITH THE CITY OF CREST HILL PUBLIC WORKS DEPARTMENT.



REVISIONS	
NAME	DATE

ILLINOIS DEPARTMENT OF TRANSPORTATION
DRAINAGE & UTILITIES
 US ROUTE 30
 SHEET 9 OF 18

CMT
 CRAWFORD MURPHY & TILLY, INC.
 CONSULTING ENGINEERS
 SPRINGFIELD, IL ■ AURORA, IL ■ ST. LOUIS, MO

SCALE: VERT.: 1"=5'
 HORIZ.: 1"=20'
 DATE: 3/1/05
 DRAWN BY: SNH
 CHECKED BY: KDF/SBP/AMB

H:\dot\0006602\dr\aw\bid\sheet9\dr-09.dgn