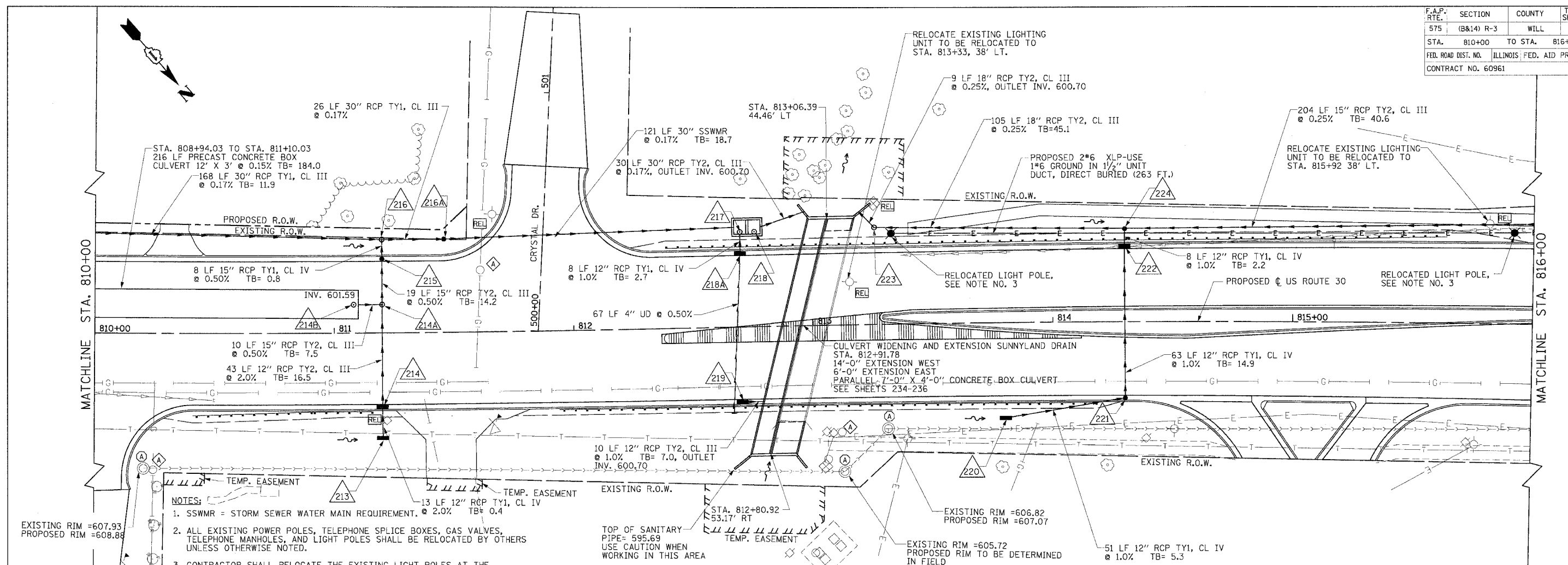
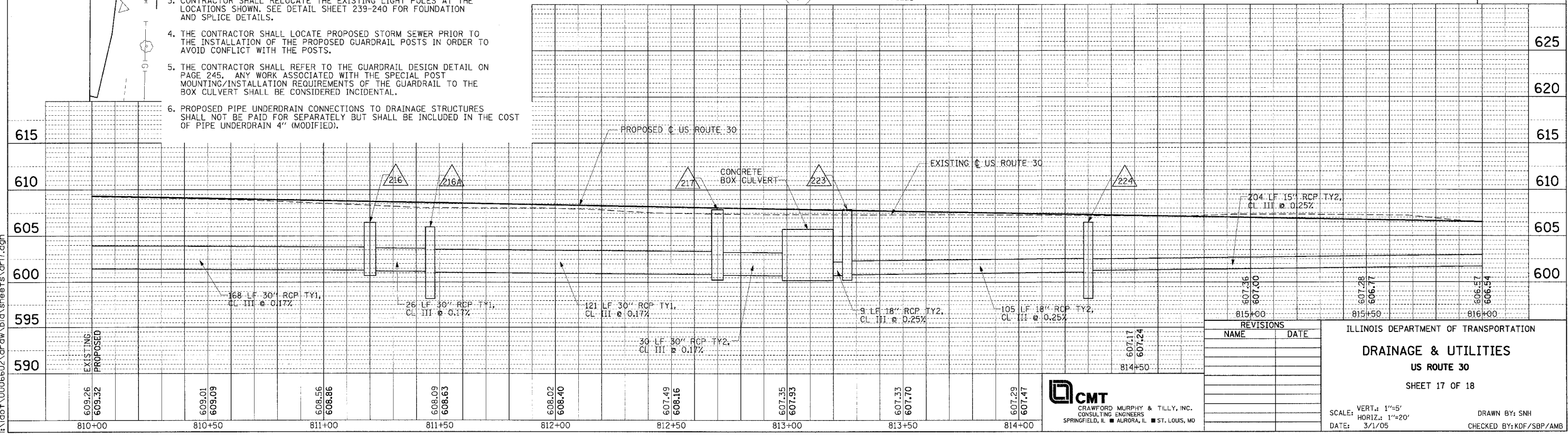


F.A.P. RTE.	SECTION	COUNTY	TOTAL SHEETS	SHEET NO.
575	(B&I) R-3	WILL	390	112
STA. 810+00		TO STA. 816+00		
FED. ROAD DIST. NO.	ILLINOIS FED. AID PROJECT			
CONTRACT NO. 60961				



- NOTES:**
- SSWMR = STORM SEWER WATER MAIN REQUIREMENT. @ 2.0% TB= 0.4
 - ALL EXISTING POWER POLES, TELEPHONE SPLICE BOXES, GAS VALVES, TELEPHONE MANHOLES, AND LIGHT POLES SHALL BE RELOCATED BY OTHERS UNLESS OTHERWISE NOTED.
 - CONTRACTOR SHALL RELOCATE THE EXISTING LIGHT POLES AT THE LOCATIONS SHOWN. SEE DETAIL SHEET 239-240 FOR FOUNDATION AND SPLICE DETAILS.
 - THE CONTRACTOR SHALL LOCATE PROPOSED STORM SEWER PRIOR TO THE INSTALLATION OF THE PROPOSED GUARDRAIL POSTS IN ORDER TO AVOID CONFLICT WITH THE POSTS.
 - THE CONTRACTOR SHALL REFER TO THE GUARDRAIL DESIGN DETAIL ON PAGE 245. ANY WORK ASSOCIATED WITH THE SPECIAL POST MOUNTING/INSTALLATION REQUIREMENTS OF THE GUARDRAIL TO THE BOX CULVERT SHALL BE CONSIDERED INCIDENTAL.
 - PROPOSED PIPE UNDERDRAIN CONNECTIONS TO DRAINAGE STRUCTURES SHALL NOT BE PAID FOR SEPARATELY BUT SHALL BE INCLUDED IN THE COST OF PIPE UNDERDRAIN 4\" (MODIFIED).



REVISIONS	
NAME	DATE

ILLINOIS DEPARTMENT OF TRANSPORTATION
DRAINAGE & UTILITIES
US ROUTE 30
 SHEET 17 OF 18

SCALE: VERT.: 1"=5'
 HORIZ.: 1"=20'
 DATE: 3/1/05

DRAWN BY: SNH
 CHECKED BY: KDF/SBP/AMB

CMT
 CRAWFORD MURPHY & TILLY, INC.
 CONSULTING ENGINEERS
 SPRINGFIELD, IL ■ AURORA, IL ■ ST. LOUIS, MO

PLAN
 DRAWN BY: []
 CHECKED BY: []
 DATE: []

PROFILE
 DRAWN BY: []
 CHECKED BY: []
 DATE: []

I:\dot\0006602\draw\bd\sheet17.dgn