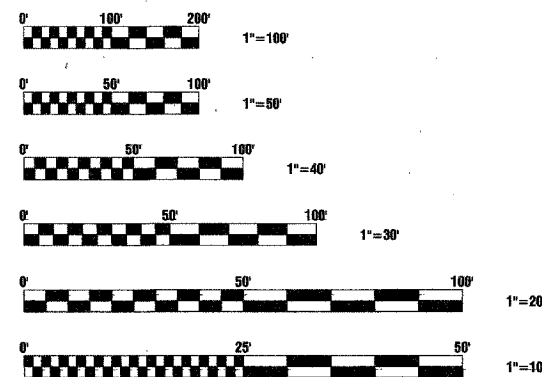
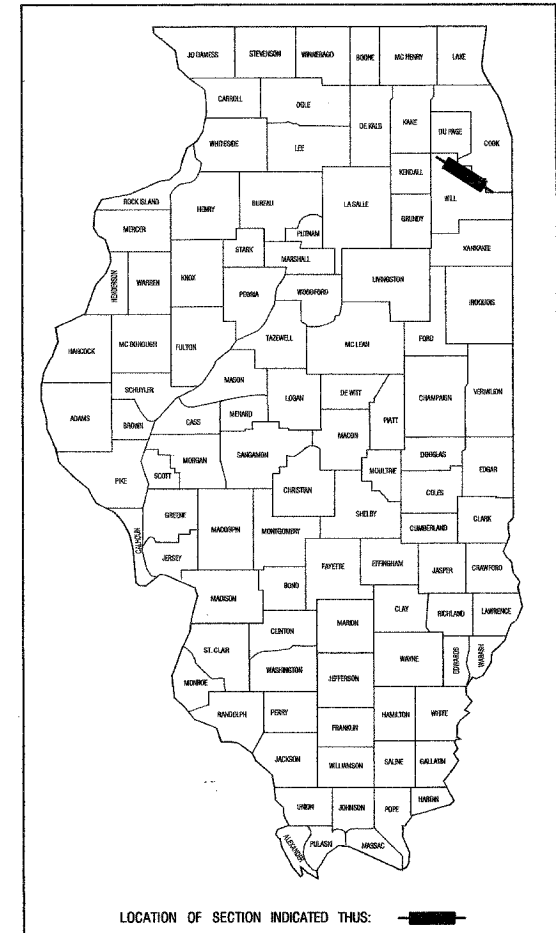


STATE OF ILLINOIS
DEPARTMENT OF TRANSPORTATION
DIVISION OF HIGHWAYS

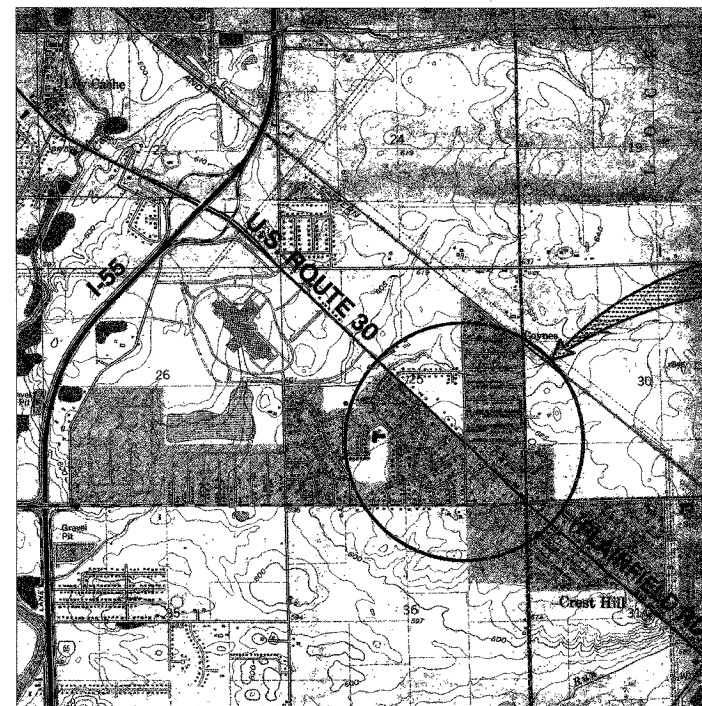
PLANS FOR PROPOSED
FEDERAL AID HIGHWAY
RIGHT OF WAY ACQUISITION

ROUTE: F.A.P. 575 (U.S. ROUTE 30)
SECTION: CATON FARM ROAD TO HENNEPIN DRIVE
PROJECT:
JOB NO.: R-91-073-00
COUNTY: WILL COUNTY



FULL SIZE PLANS HAVE BEEN PREPARED USING STANDARD ENGINEERING SCALES, REDUCED SIZED PLANS WILL NOT CONFORM TO STANDARD SCALES, IN MAKING MEASUREMENTS ON REDUCED SIZED PLANS, THE ABOVE SCALES MAY BE UTILIZED.

THE PROJECT IS LOCATED IN THE VILLAGE OF CREST HILL



START = STATION 772+55.08
END = STATION 816+02.24

STATE OF ILLINOIS
DEPARTMENT OF TRANSPORTATION
DIVISION OF HIGHWAYS

SUBMITTED _____ 20 _____
DISTRICT ENGINEER

ENGINEER OF PROJECT DEVELOPMENT AND IMPLEMENTATION

ENGINEER OF DESIGN AND ENVIRONMENT

DIRECTOR, DIVISION OF HIGHWAYS

RECEIVED
JUL 12 1991
PLATS & LEGAL