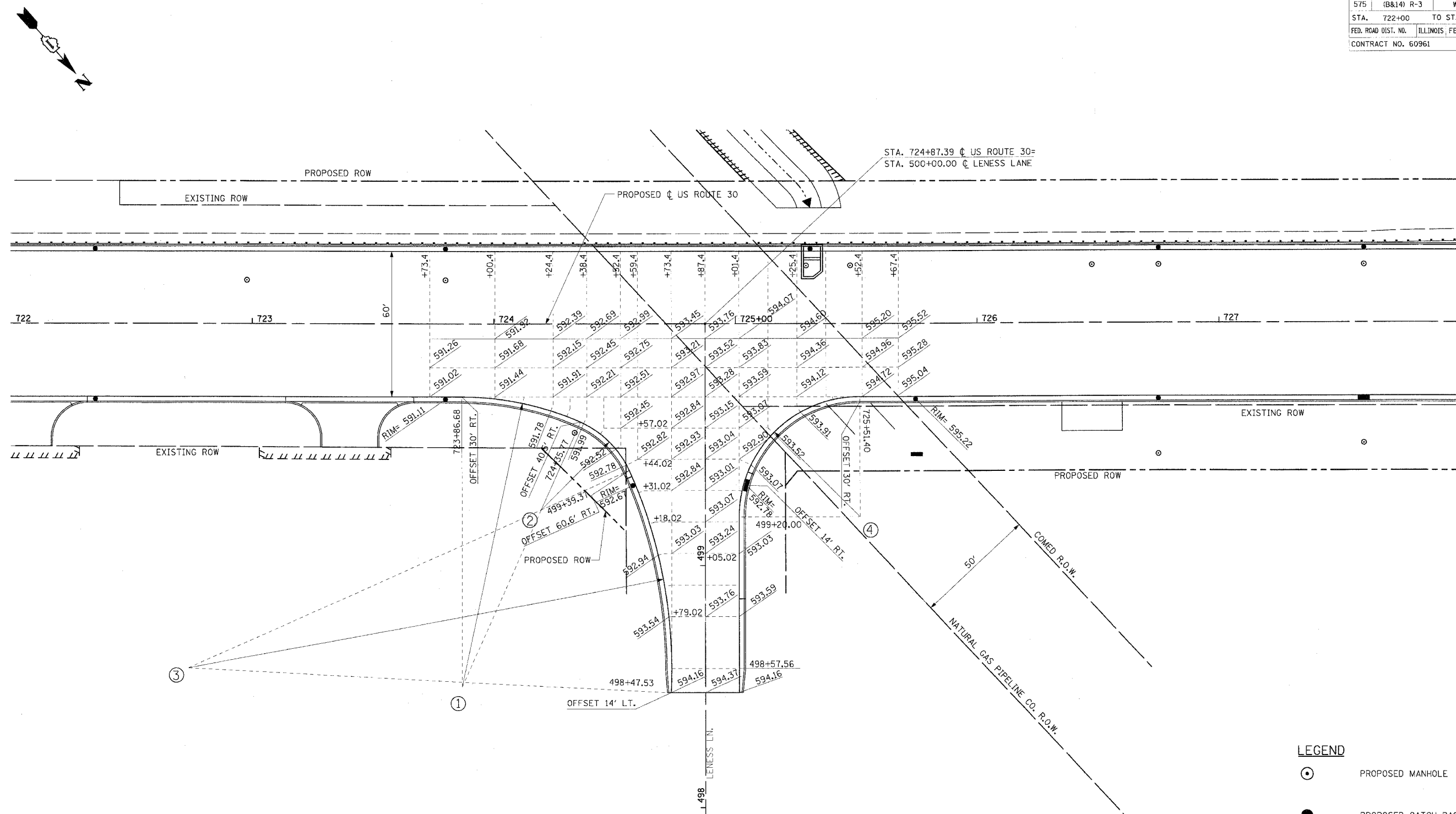


F.A.P. RTE.	SECTION	COUNTY	TOTAL SHEETS	SHEET NO.
575	(B&I) R-3	WILL	390	168
STA. 722+00	TO STA. 728+00			
FED. ROAD DIST. NO.		ILLINOIS FED. AID PROJECT		
CONTRACT NO. 60961				



**RADI TABLE**

- ① STA. 723+86.68 (US 30) ; 0/S 150.00' RT. ; 120' R TO E.O.P.
- ② STA. 724+19.40 (US 30) ; 0/S 77.00' RT. ; 40' R TO E.O.P.
- ③ STA. 498+57.56 (LENESS LANE) ; 0/S 214' LT. ; 200' R TO E.O.P.
- ④ STA. 725+51.40 (US 30) ; 0/S 80' RT. ; 50' R TO E.O.P.

**LEGEND**

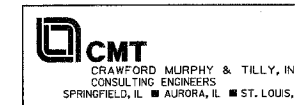
- PROPOSED MANHOLE
- PROPOSED CATCH BASIN
- PROPOSED INLET

REVISIONS	
NAME	DATE

ILLINOIS DEPARTMENT OF TRANSPORTATION  
**INTERSECTION GRADING PLAN**  
**US RTE. 30 / LENESS LANE**  
 US ROUTE 30  
 SHEET 1 OF 2

SCALE: VERT. NONE  
 HORIZ. 1"=20'  
 DATE: 3/1/05

DRAWN BY: SNH  
 CHECKED BY: AMB/KDF



I:\victor\00602\draw\bid\sheet\intersect01.dgn