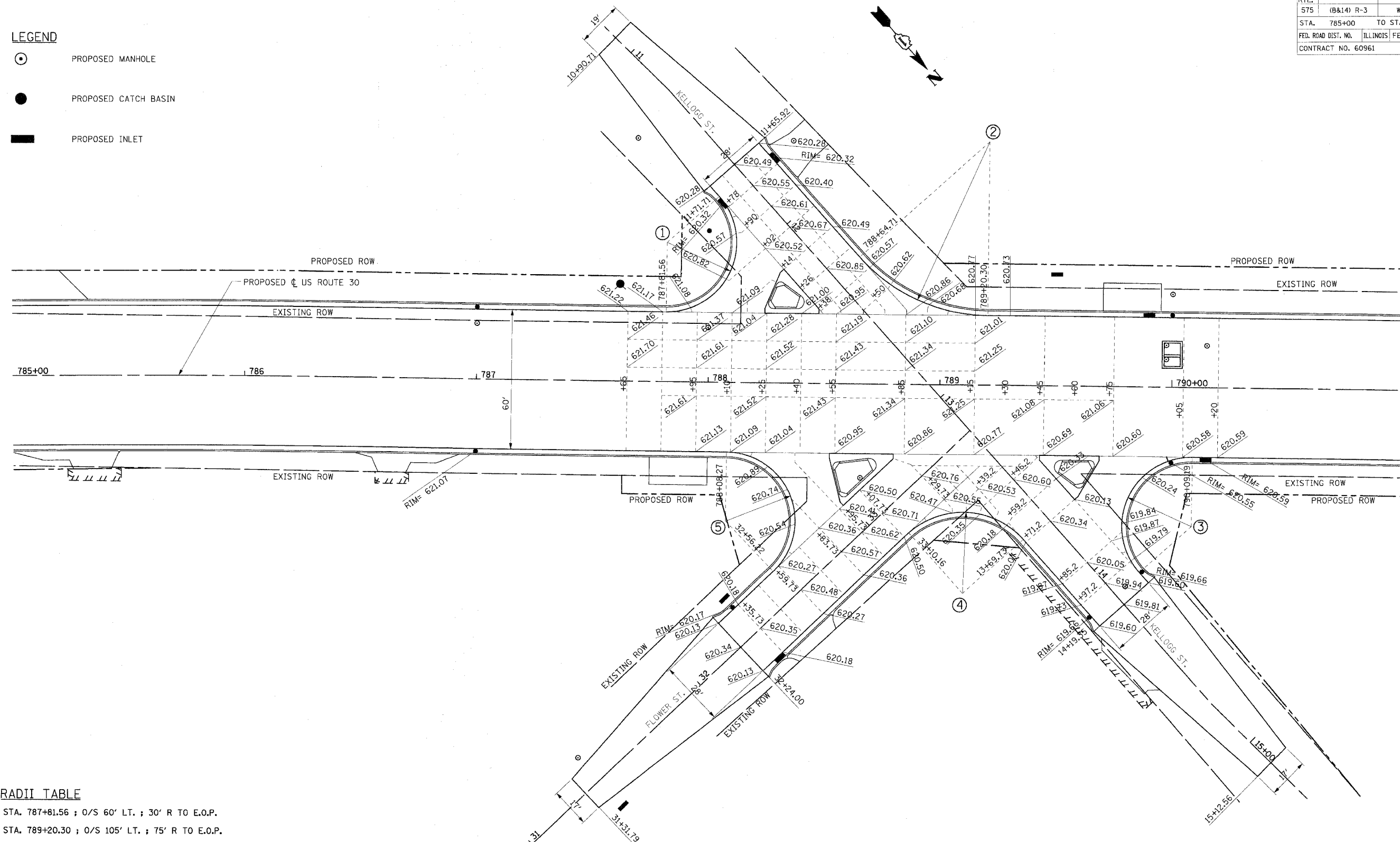


F.A.P. RTE.	SECTION	COUNTY	TOTAL SHEETS	SHEET NO.
575	(8&14) R-3	WILL.	390	169
STA. 785+00	TO STA. 791+00			
FED. ROAD DIST. NO.	ILLINOIS	FED. AID PROJECT		
CONTRACT NO. 60961				

LEGEND

- PROPOSED MANHOLE
- PROPOSED CATCH BASIN
- PROPOSED INLET



RADI TABLE

- ① STA. 787+81.56 ; 0/S 60' LT. ; 30' R TO E.O.P.
- ② STA. 789+20.30 ; 0/S 105' LT. ; 75' R TO E.O.P.
- ③ STA. 790+09.19 ; 0/S 60' RT. ; 30' R TO E.O.P.
- ④ STA. 789+10.89 ; 0/S 90' RT. ; 35' R TO E.O.P.
- ⑤ STA. 788+08.27 ; 0/S 60 RT. ; 30' R TO E.O.P.

REVISIONS	
NAME	DATE

ILLINOIS DEPARTMENT OF TRANSPORTATION
INTERSECTION GRADING PLAN
US RTE. 30 / FLOWER ST.
/ KELLOGG ST.
 US ROUTE 30
 SHEET 2 OF 2

CMT
 CRAWFORD MURPHY & TILLY, INC.
 CONSULTING ENGINEERS
 SPRINGFIELD, IL ■ AURORA, IL ■ ST. LOUIS, MO

SCALE: VERT. NONE
 HORIZ. 1"=20'
 DATE: 3/1/05
 DRAWN BY: SNH
 CHECKED BY: AMB/KDF

I:\act\000602\draw\bid\sheet\intersect03.dgn