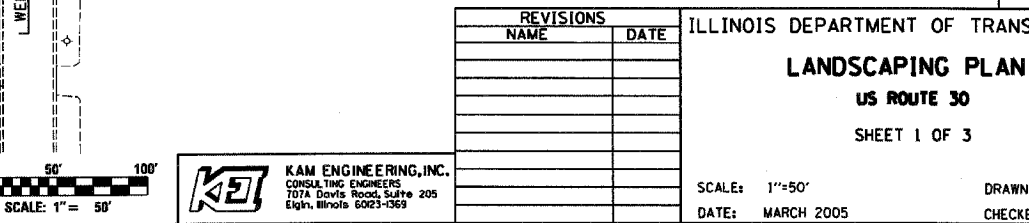
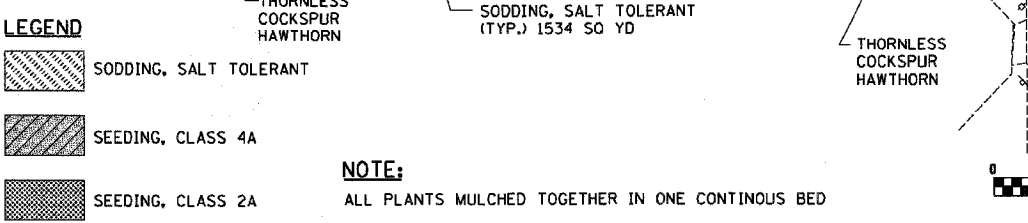
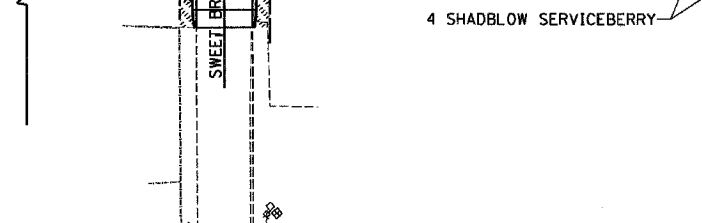
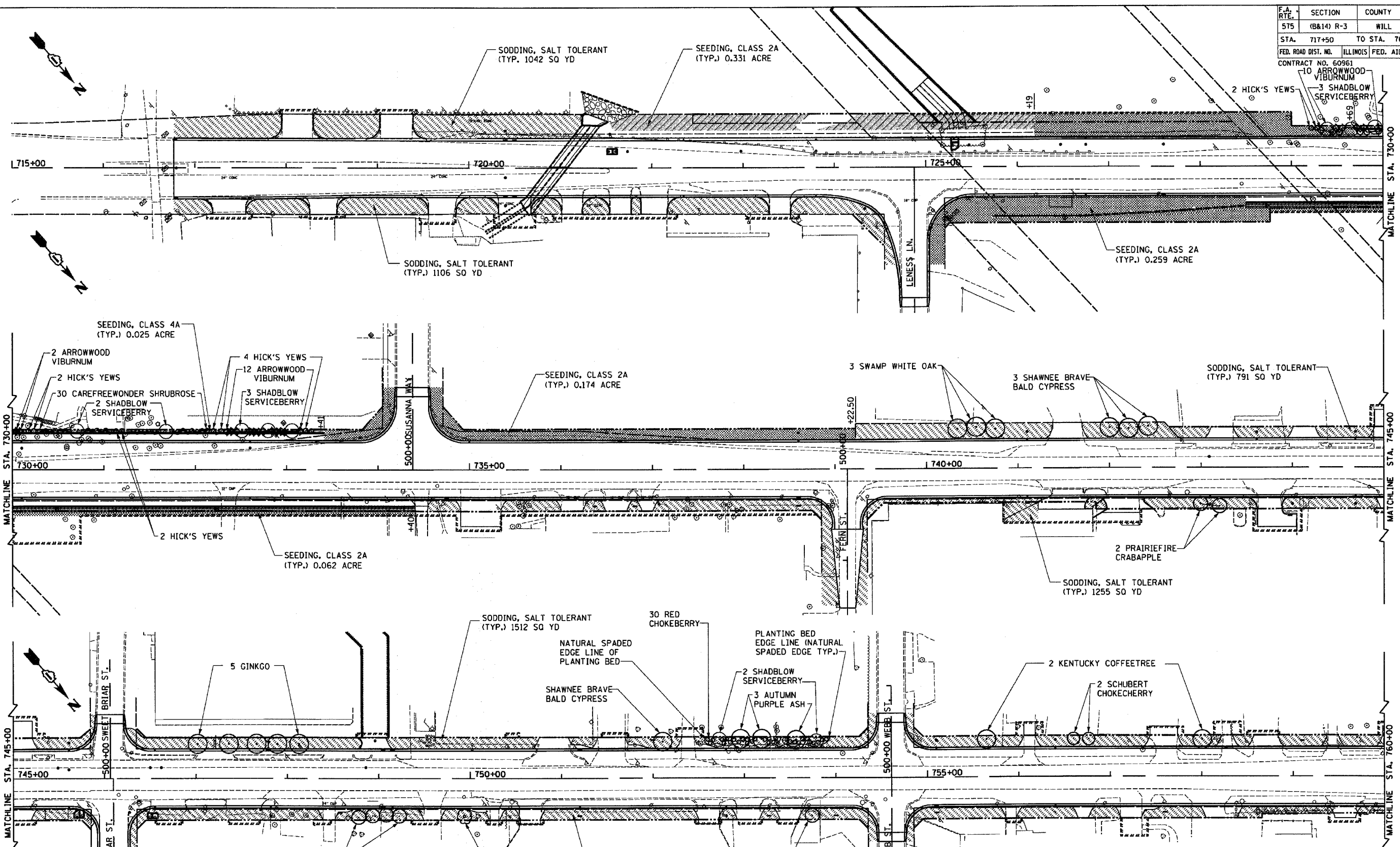


|                     |                |                  |              |           |
|---------------------|----------------|------------------|--------------|-----------|
| F.A. RTE.           | SECTION        | COUNTY           | TOTAL SHEETS | SHEET NO. |
| 575                 | (B&I) R-3      | WILL             | 390          | 179       |
| STA. 717+50         | TO STA. 760+00 |                  |              |           |
| FED. ROAD DIST. NO. | ILLINOIS       | FED. AID PROJECT |              |           |

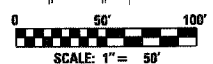
CONTRACT NO. 60961  
 10 ARROWWOOD VIBURNUM  
 3 SHADBLOW SERVICEBERRY



**LEGEND**

- SODDING, SALT TOLERANT
- SEEDING, CLASS 4A
- SEEDING, CLASS 2A

**NOTE:**  
 ALL PLANTS MULCHED TOGETHER IN ONE CONTINUOUS BED



**K&E** KAM ENGINEERING, INC.  
 CONSULTING ENGINEERS  
 7074 Dow's Road, Suite 205  
 Elgin, Illinois 60123-1369

| REVISIONS |      |
|-----------|------|
| NAME      | DATE |
|           |      |
|           |      |
|           |      |
|           |      |
|           |      |

ILLINOIS DEPARTMENT OF TRANSPORTATION  
**LANDSCAPING PLAN**  
 US ROUTE 30  
 SHEET 1 OF 3  
 SCALE: 1"=50'  
 DATE: MARCH 2005  
 DRAWN BY: MD  
 CHECKED BY: MSA

FILES  
 8DATE\$