

BENCHMARK:

T.B.M. #4P R.R. spike northerly side power pole Sta. 716+24.37, 79.23' Lt. Elev. 588.71

C.P. #15 P.K. spike Sta. 725+05.18, 33.32' Rt. Elev. 593.42

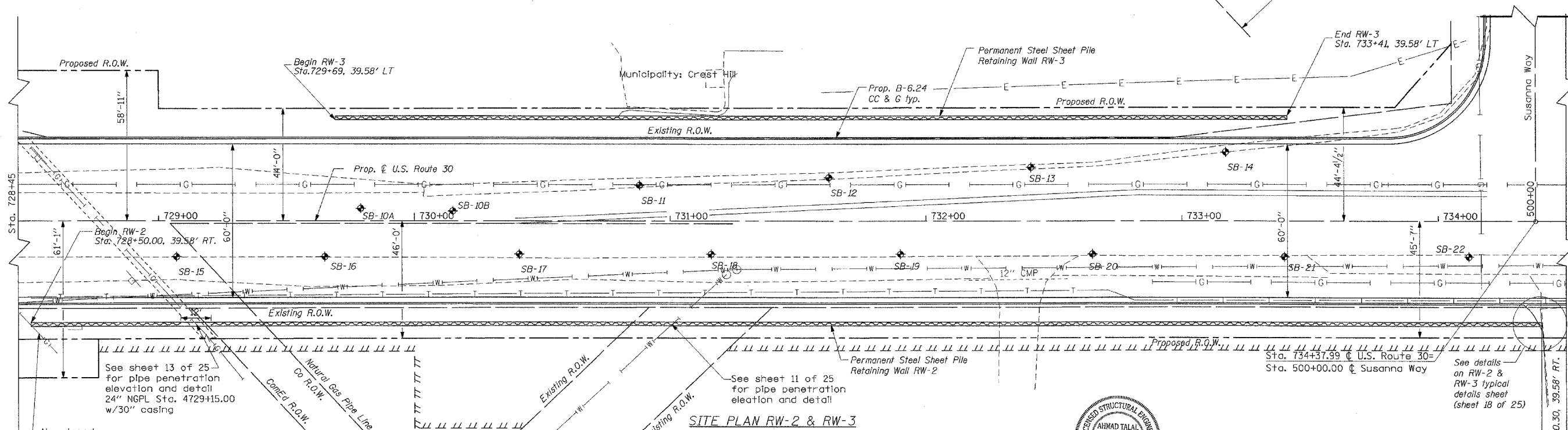
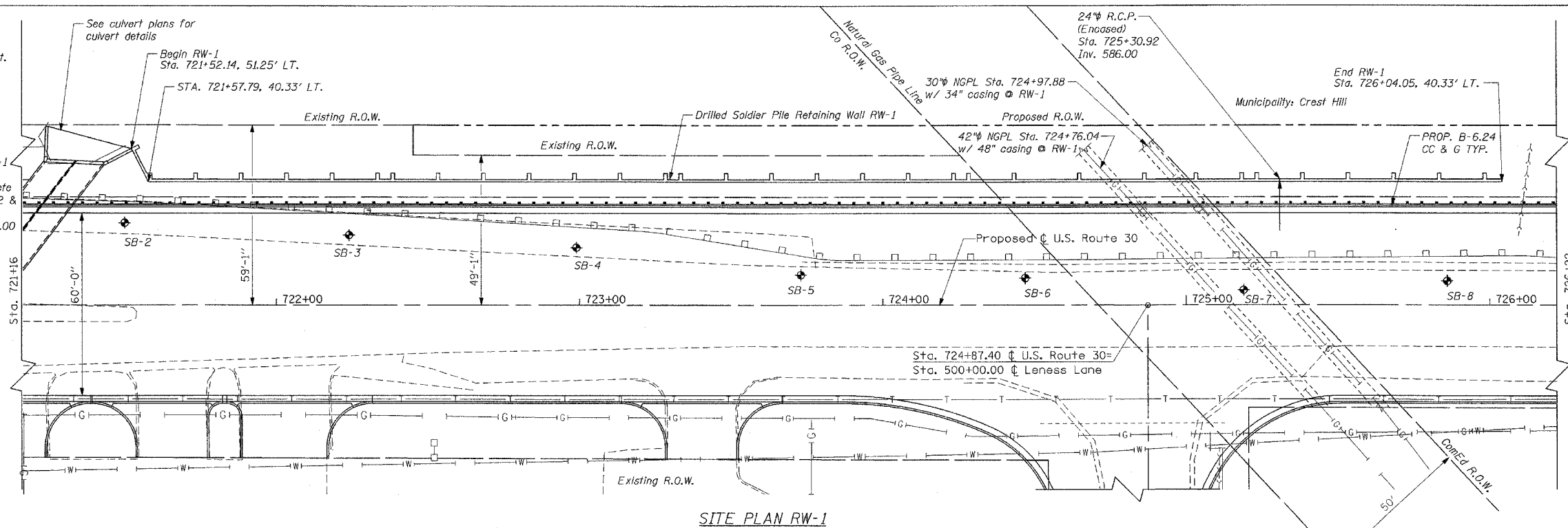
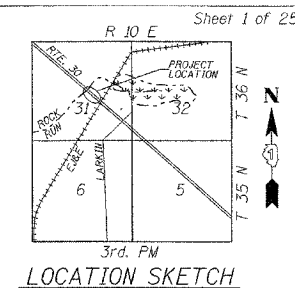
PROPOSED STRUCTURES:

Drilled Soldier Pile Retaining Wall RW-1 from Sta. 721+52.14 to Sta. 726+19.00 with Cast-In-Place Concrete Face and Steel Sheet Pile Walls RW-2 & RW-3 from Sta. 728+50.00 to Sta. 734+40.30 & from Sta. 729+69.00 to Sta. 733+41.00, respectively.

EXISTING STRUCTURE:

None.

F.A.P. RTE.	SECTION	COUNTY	TOTAL SHEETS	SHEET NO.
575	(B&14) R-3	WILL	390	186
STA.		TO STA.		
FED. ROAD DIST. NO.		ILLINOIS FED. AID PROJECT		
CONTRACT NO. 60961				



BORING INFORMATION

Boring No.	Station	Offset	Ground Elev.
SB-2	721+50	27 LT.	589.23
SB-3	722+24	23 LT.	589.81
SB-4	722+99	19 LT.	590.37
SB-5	723+73	10 LT.	591.22
SB-6	724+47	9 LT.	592.34
SB-7	725+19	5 LT.	593.96
SB-8	725+86	8 LT.	595.82
SB-10A	729+79	5 LT.	612.90
SB-10B	730+15	4 LT.	614.87
SB-11	730+88	14 LT.	618.29
SB-12	731+62	17 LT.	621.49
SB-13	732+41	21 LT.	624.89

BORING INFORMATION CONT

Boring No.	Station	Offset	Ground Elev.
SB-14	733+17	27 LT.	628.14
SB-15	729+07	13 RT.	609.06
SB-16	729+65	14 RT.	611.73
SB-17	730+41	13 RT.	616.02
SB-18	731+16	13 RT.	619.44
SB-19	731+90	13 RT.	622.79
SB-20	732+65	13 RT.	626.01
SB-21	733+40	14 RT.	629.14
SB-22	734+12	14 RT.	631.58

- NOTES:**
- The Contractor shall provide Kinder-Morgan a 3-week notification prior to starting work in the area of the high pressure gas lines. The Contractor shall verify the location and elevation of all NGPL facilities prior to the start of work. Contact Bob Jones at (815) 725-1405 ext. 108 or cell phone (708) 805-7046.
 - Contractor shall maintain thirty (30) foot working clearance from easterly ComEd overhead line and twenty (20) foot working clearance from center and westerly ComEd overhead lines. Low profile drilling rigs may be needed for soldier pile retaining wall construction.

DESIGN SPECIFICATIONS:
2002 AASHTO "Standard Specifications for Highway Bridges"

DESIGN STRESSES:
FIELD UNITS
f'c = 3,500 psi
fy = 60,000 psi (Reinforcement)
fy = 50,000 psi (AASHTO M270 Grade 50) (Soldier Piles)
fy = 50,000 psi (AASHTO M202 Grade 50) (Sheet Piles)



Ahmad T. Idriss, P.E., S.E.
Illinois Licensed Structural Engineer
License Number: 081-005753
Expiration date: November 30, 2006

CMT
CRAWFORD MURPHY & TILLY, INC.
CONSULTING ENGINEERS
SPRINGFIELD, IL ■ AURORA, IL ■ ST. LOUIS, MO

REVISIONS

NAME	DATE

ILLINOIS DEPARTMENT OF TRANSPORTATION
RETAINING WALLS GENERAL PLAN
FAP RTE. 575 (U.S.30)
SECTION (B & 14) R-3
WILL COUNTY
SCALE: VERT. NONE
HORIZ. 1"=20'
DATE: 3/1/05
DRAWN BY: GRS
CHECKED BY: ATI

I:\dot\000602\draw\retaining walls\retainer_rw-1-3.dgn