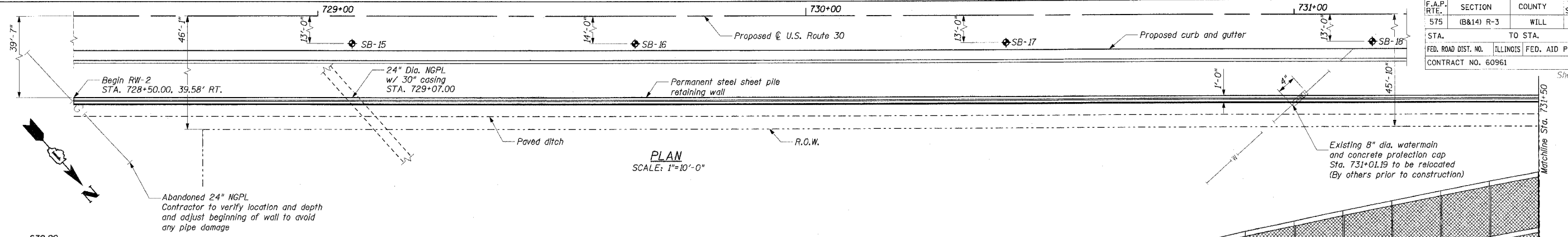
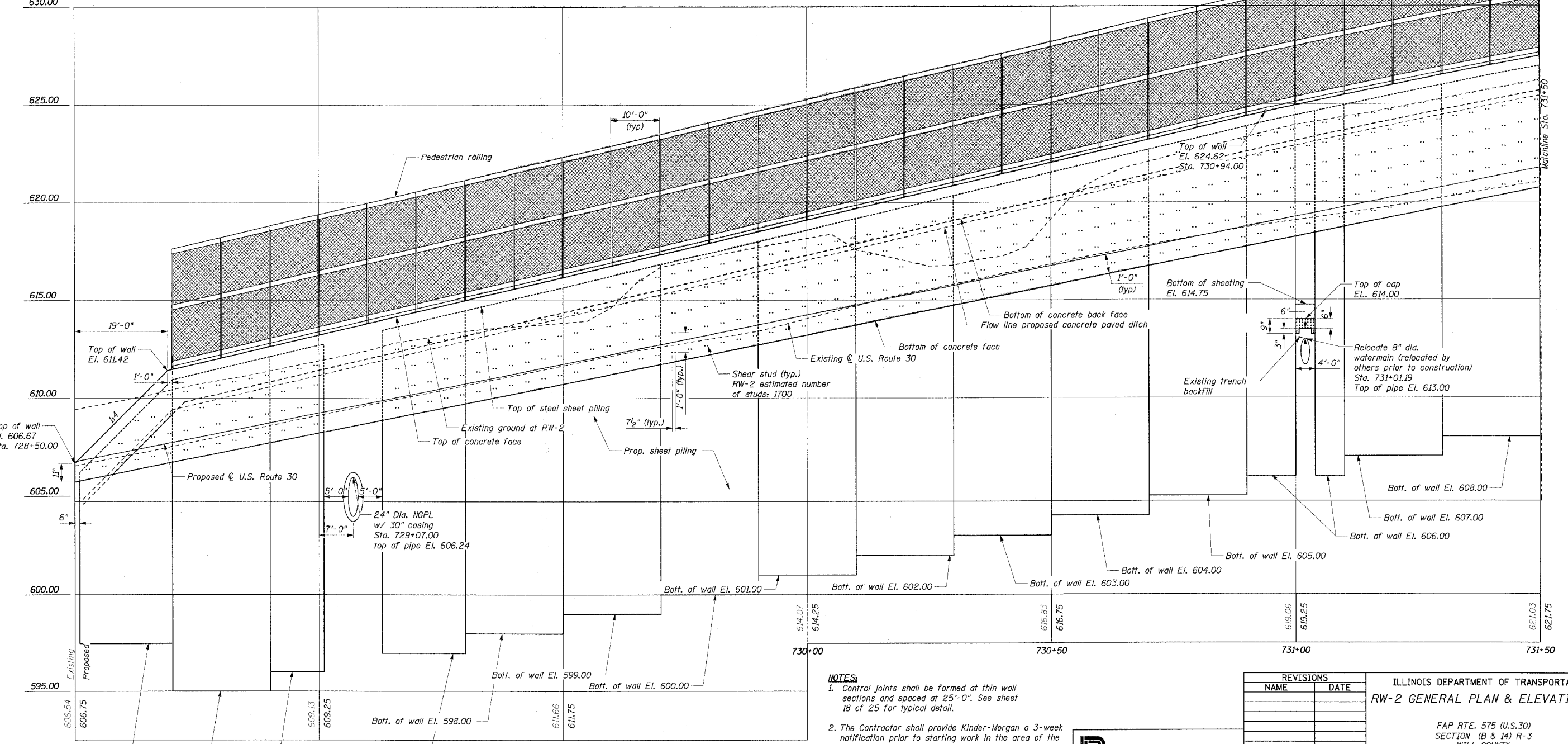


F.A.P. RTE.	SECTION	COUNTY	TOTAL SHEETS	SHEET NO.
575	(B&14) R-3	WILL	390	196
STA.		TO STA.		
FED. ROAD DIST. NO.		ILLINOIS FED. AID PROJECT		
CONTRACT NO. 60961				



PLAN
SCALE: 1"=10'-0"



ELEVATION
SCALE: 1"=10'-0" HORZ.
1"=2'-6" VERT.

- NOTES:**
- Control joints shall be formed at thin wall sections and spaced at 25'-0". See sheet 18 of 25 for typical detail.
 - The Contractor shall provide Kinder-Morgan a 3-week notification prior to starting work in the area of the high pressure gas lines. The Contractor shall verify the location and elevation of all NGPL facilities prior to the start of work. Contact Bob Jones at (815) 725-1405 ext. 108 or cell phone (708) 805-7046.

REVISIONS	
NAME	DATE

CMT
CRAWFORD MURPHY & TILLY, INC.
CONSULTING ENGINEERS
SPRINGFIELD, IL ■ AURORA, IL ■ ST. LOUIS, MO

ILLINOIS DEPARTMENT OF TRANSPORTATION
RW-2 GENERAL PLAN & ELEVATION I

FAP RTE. 575 (U.S.30)
SECTION (B & 14) R-3
WILL COUNTY

SCALE: VERT. AS SHOWN
HORIZ. DATE: 3/1/05

DRAWN BY: GRS
CHECKED BY: ATI

I:\data\0060602\raw\other\retaining walls\profile_rw-2a.dgn