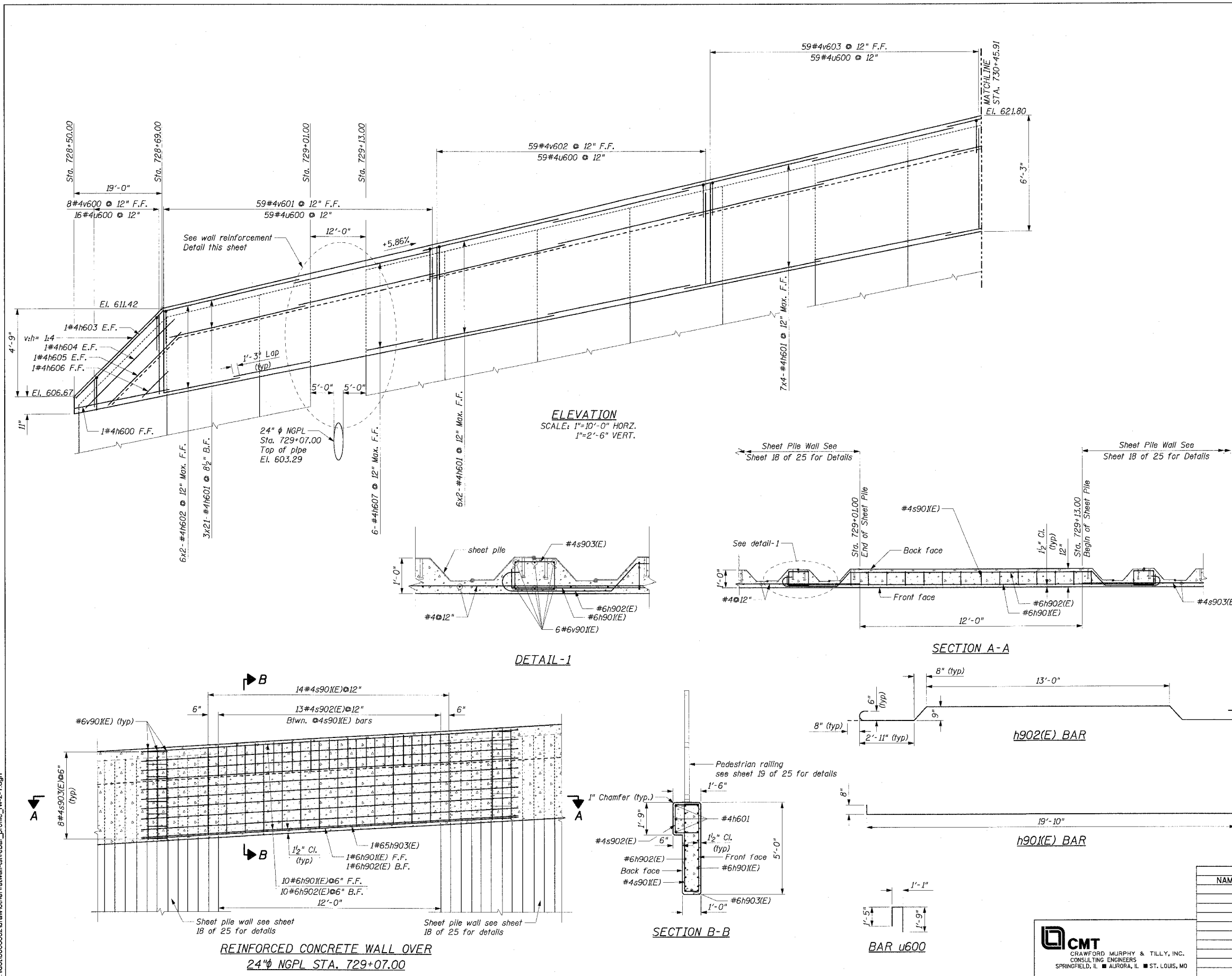


F.A.P. RTE.	SECTION	COUNTY	TOTAL SHEETS	SHEET NO.
575	(B&I4) R-3	WILL	390	198
STA.		TO STA.		
FED. ROAD DIST. NO.		ILLINOIS FED. AID PROJECT		
CONTRACT NO. 60961		Sheet 13 of 25		

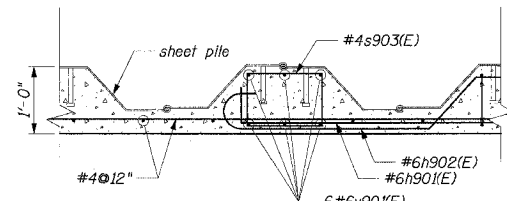
**BAR SCHEDULE STA. 728+50
TO STA. 734+41**

Bar	No.	Size	Length	Shape
h600	1	#4	20'-8"	—
h601	180	#4	30'-0"	—
h602	28	#4	16'-11"	—
h603	2	#4	19'-7"	—
h604	2	#4	19'-10"	—
h605	2	#4	16'-3"	—
h606	1	#4	5'-8"	—
h607	6	#4	12'-4"	—
h901(E)	11	#6	22'-2"	U
h902(E)	11	#6	21'-2"	U
h903(E)	1	#6	19'-10"	U
s901(E)	14	#4	11'-9"	□
s902(E)	13	#4	6'-3"	□
s903(E)	16	#4	4'-3"	□
v600	8	#4	5'-9"	—
v601	59	#4	4'-6"	—
v602	59	#4	5'-0"	—
v603	59	#4	5'-6"	—
v604	49	#4	5'-11"	—
v605	81	#4	6'-4"	—
v606	134	#4	5'-9"	—
v607	36	#4	5'-3"	—
v608	26	#4	4'-9"	—
v609	20	#4	4'-2"	—
v610	16	#4	3'-8"	—
v611	15	#4	3'-2"	—
v612	6	#4	2'-11"	—
v613	12	#4	2'-5"	—
v901(E)	12	#6	4'-10"	—
u600	588	#4	4'-3"	□

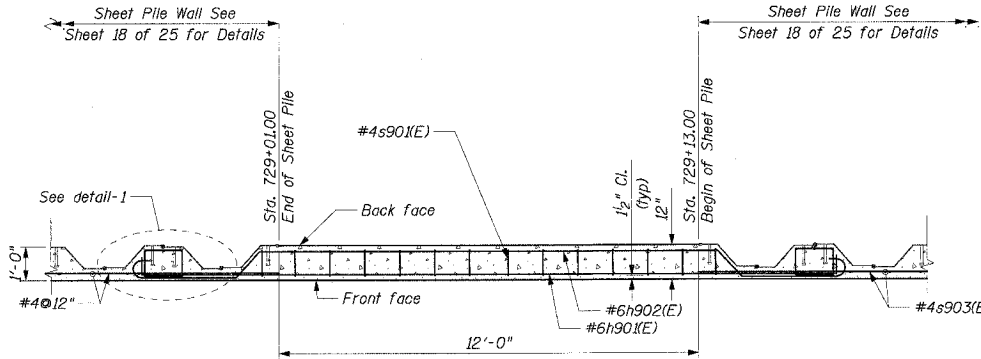
BILL OF MATERIAL		
Description	Unit	Quantity
CONCRETE STRUCTURES	CU. YD.	128.9
PROTECTIVE COAT	SQ. YD.	425
REINFORCEMENT BARS	POUND	7770
REINFORCEMENT BARS, EPOXY COATED	POUND	1040
PEDESTRIAN RAILING	FT.	586
PERMANENT STEEL SHEET PILING	SQ. FT.	10181
STUD SHEAR CONNECTORS	FACH	1652



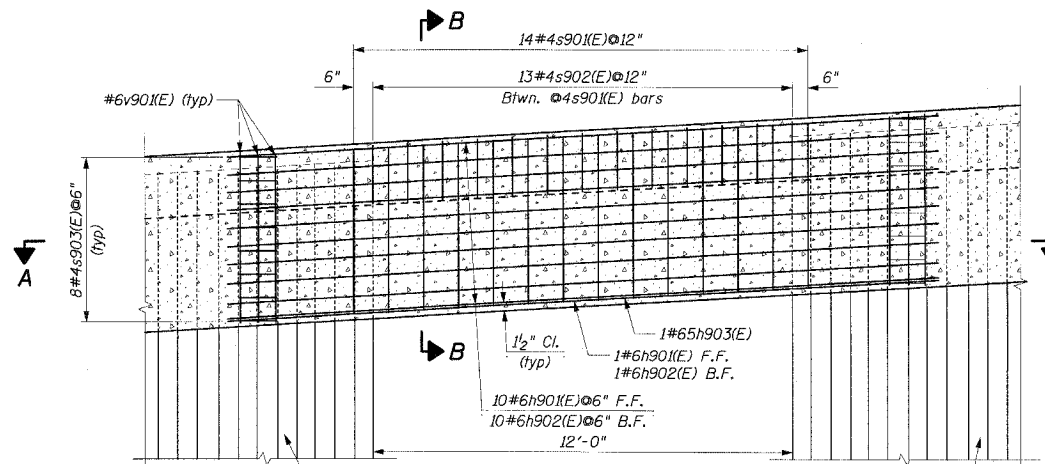
ELEVATION
SCALE: 1"=10'-0" HORZ.
1"=2'-6" VERT.



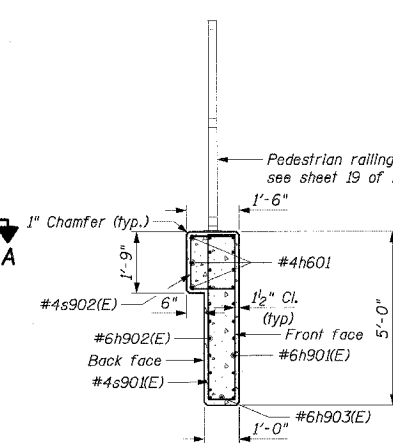
DETAIL-1



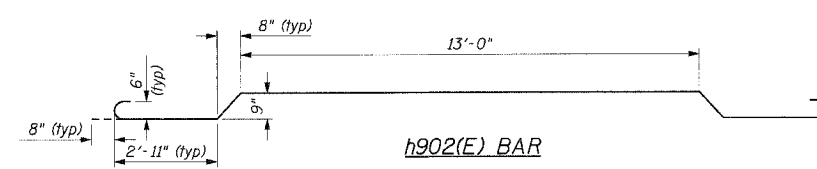
SECTION A-A



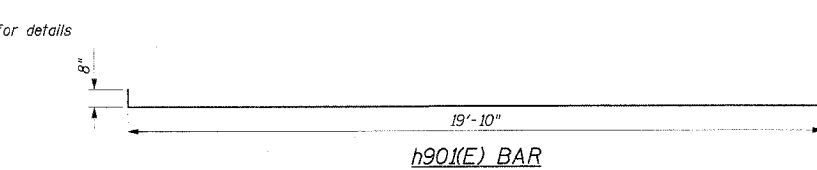
**REINFORCED CONCRETE WALL OVER
24" NGPL STA. 729+07.00**



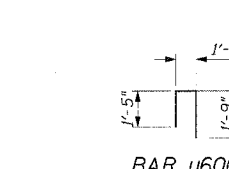
SECTION B-B



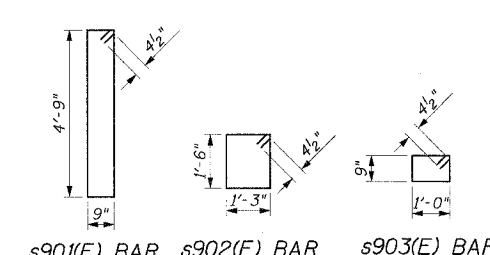
h902(E) BAR



h901(E) BAR



BAR u600



REVISIONS	
NAME	DATE

ILLINOIS DEPARTMENT OF TRANSPORTATION
RW-2 REINFORCEMENT ELEVATION I

FAP RTE. 575 (I.S.30)
SECTION (B & I4) R-3
WILL COUNTY

SCALE: VERT. AS SHOWN
HORIZ. DATE: 3/1/05

DRAWN BY: GRS
CHECKED BY: ATI

CMT
CRAWFORD MURPHY & TILLY, INC.
CONSULTING ENGINEERS
SPRINGFIELD, IL ■ AURORA, IL ■ ST. LOUIS, MO

I:\d00006602\draw\sheet\wall\is\rebar_profile_rw-2-1.dgn