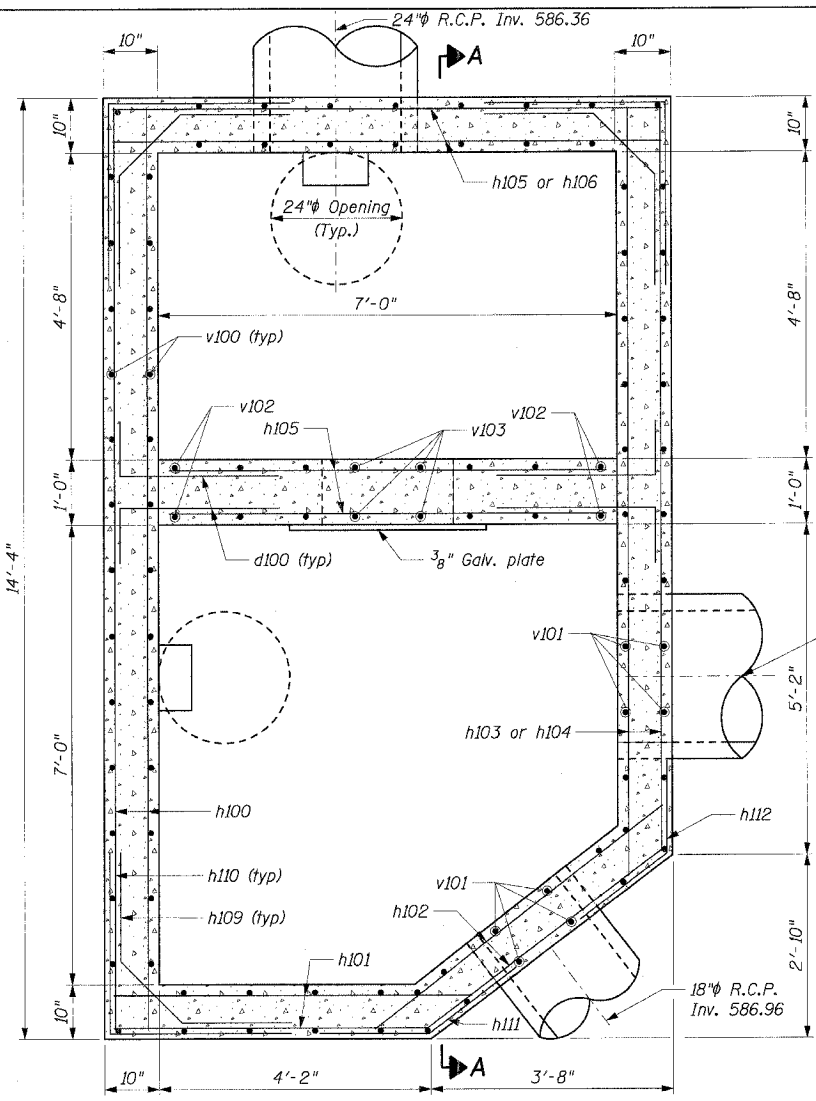
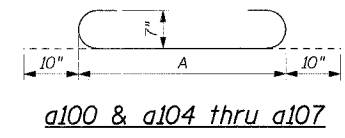
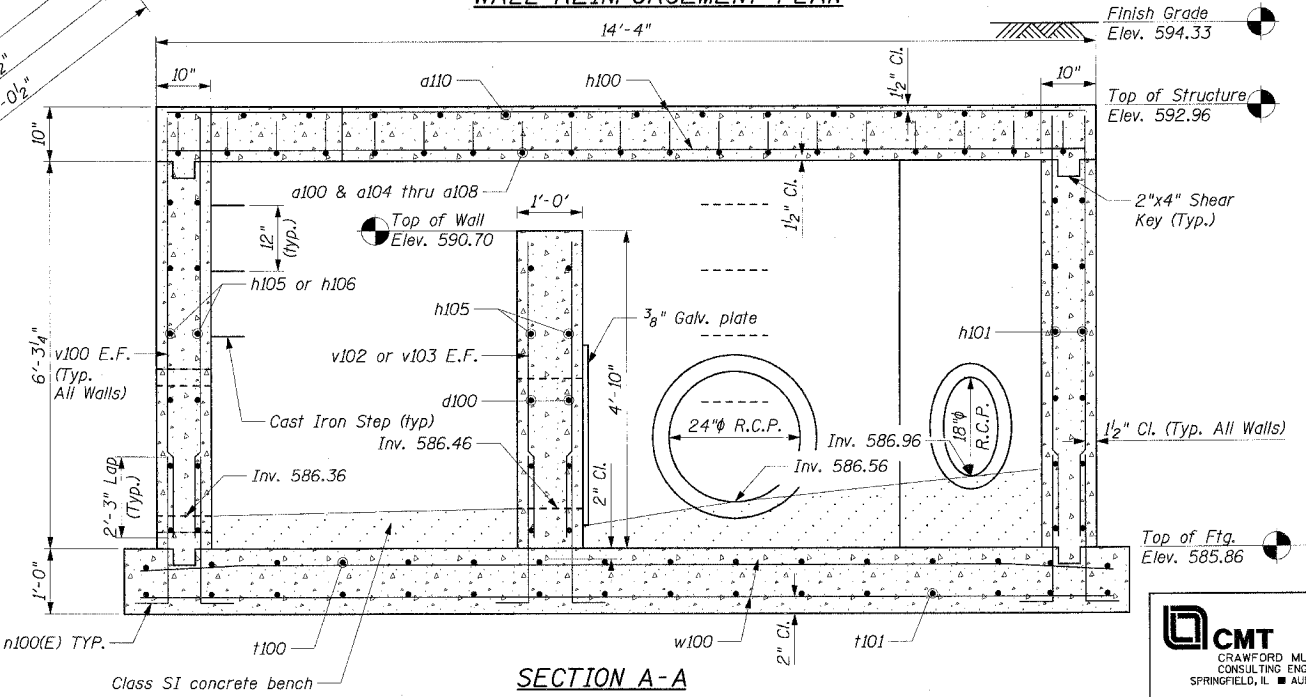


PLAN VIEW
SCALE: 3/4" = 1'-0"

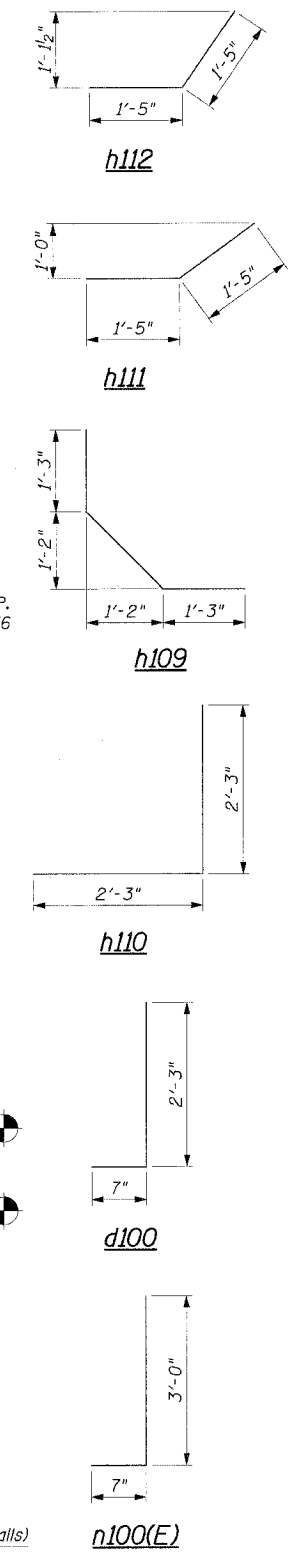
BAR	"A"
a100	8'-4"
a104	7'-4"
a105	6'-5"
a106	5'-5"
a107	4'-9"



WALL REINFORCEMENT PLAN



SECTION A-A



BAR AND MATERIAL LIST
(FOR INFORMATION ONLY)

Bar	No.	Size	Length	Shape
a100	15	#7	10'-0"	U
a101	3	#7	3'-9"	U
a102	3	#7	2'-3"	U
a103	2	#7	5'-6"	U
a104	1	#7	9'-0"	U
a105	1	#7	8'-1"	U
a106	1	#7	7'-1"	U
a107	1	#7	6'-5"	U
a108	2	#5	5'-10"	U
a109	16	#7	2'-4"	U
a110	19	#5	8'-4"	U
a111	16	#5	2'-4"	U
d100	20	#5	2'-10"	U
h100	40	#5	14'-0"	U
h101	14	#5	4'-8"	U
h102	8	#5	4'-6"	U
h103	8	#5	11'-2"	U
h104	6	#5	7'-5"	U
h105	8	#5	8'-4"	U
h106	6	#5	2'-8"	U
h107	56	#5	2'-4"	U
h108	32	#5	2'-10"	U
h109	21	#5	4'-2"	U
h110	21	#5	4'-6"	U
h111	7	#5	2'-10"	U
h112	7	#5	2'-10"	U
n100(E)	84	#5	3'-7"	U
v100	16	#7	9'-4"	U
v101	18	#5	9'-4"	U
v102	12	#5	4'-0"	U
v103	4	#5	2'-0"	U
w100	20	#5	15'-0"	U

Description	Unit	Quantity
REINFORCEMENT BARS	L.B.	3590
REINFORCEMENT BARS, EPOXY COATED	L.B.	310
CLASS SI CONCRETE	CU. YD.	9.3
TYPE 1 FRAME, CLOSED LID	E.A.	1
TYPE 24 FRAME AND GRATE	E.A.	1

BILL OF MATERIAL

Item	Description	Unit	Quantity
*	SPECIAL STRUCTURE SP-2	E.A.	1

* Indicates pay item governed by a special provision

REVISIONS	
NAME	DATE

ILLINOIS DEPARTMENT OF TRANSPORTATION
SPECIAL STRUCTURE SP-2
OUTLET JOB
FAP RTE. 575 (U.S.30)
SECTION (B & I) R-3
WILL COUNTY

SCALE: VERT. AS SHOWN
HORIZ. 3/1/05

DATE: 3/1/05

DRAWN BY: GRS
CHECKED BY: ATI

