

BAR AND MATERIAL LIST Sheet 6 of 15
(FOR INFORMATION ONLY)

Bar	No.	Size	Length	Shape
a1	11	#7	10'-9"	U
a2	1	#7	10'-0"	U
a3	2	#7	9'-0"	U
a4	1	#7	7'-10"	U
a5	1	#7	6'-11"	U
a6	4	#7	6'-4"	U
a7	18	#5	9'-1"	U
a8	16	#5	2'-4"	U
a9	16	#7	2'-4"	U
d1	16	#5	2'-10"	L
h1	5	#5	8'-5"	U
h2	2	#5	4'-9"	U
h3	2	#5	5'-3"	U
h4	10	#5	1'-4"	U
h5	4	#5	9'-1"	U
h6	15	#5	4'-6"	U
h7	5	#5	2'-10"	U
h8	5	#5	2'-10"	U
h9	5	#5	8'-10"	U
h10	2	#5	4'-10"	U
h11	2	#5	5'-10"	U
h12	24	#5	2'-7"	U
h13	40	#5	2'-3"	U
h14	24	#5	2'-10"	U
h15	15	#5	4'-2"	U
h16	2	#5	7'-5"	U
h17	6	#5	5'-2"	U
h18	12	#5	1'-4"	U
h19	15	#7	1'-4"	U
n(E)	88	#5	3'-7"	U
i1	13	#7	10'-1"	U
i2	13	#5	10'-1"	U
v1	76	#5	4'-9"	U
v2	12	#5	3'-3"	U
v3	12	#5	2'-5"	U
w1	11	#7	12'-4"	U
w2	11	#5	12'-4"	U
w3	2	#5	5'-5"	U

Description	Unit	Quantity
REINFORCEMENT BARS	LB.	3220
REINFORCEMENT BARS, EPOXY COATED	LB.	330
CLASS SI CONCRETE	CU. YD.	11.7
TYPE 1 FRAME, OPEN LID	EA.	1
TYPE 1 FRAME, CLOSED LID	EA.	1

BILL OF MATERIAL

Item	Description	Unit	Quantity
*	SPECIAL STRUCTURE SP-3	EA.	1

- NOTES:**
- All steel plates shall conform to the requirements of AASHTO M270 grade 36.
 - Bolts, cap screws and nuts shall conform to the requirements of ASTM designation A 307 except that threaded rods, nuts and washers shall conform to AASHTO M 164.
 - All bolts, nuts, cap screws, washers and lock washers shall be galvanized according to AASHTO M 232.
 - The Contractor shall use the capsule or adhesive cartridge type anchor rods that have been previously tested and given a prior approval by the Department. The Contractor shall install these anchor rods in pre-drilled holes according to the manufacturer's recommendations and procedures. The capsule or the adhesive cartridge shall be sealed with premeasured amounts of the chemical.

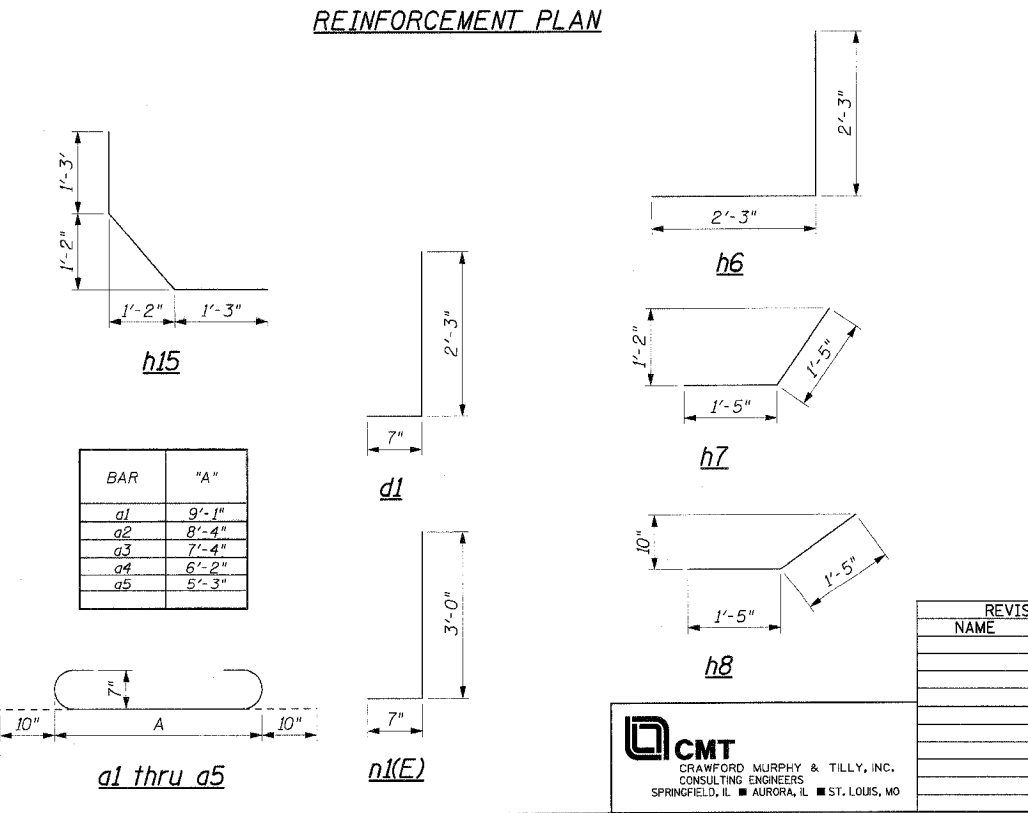
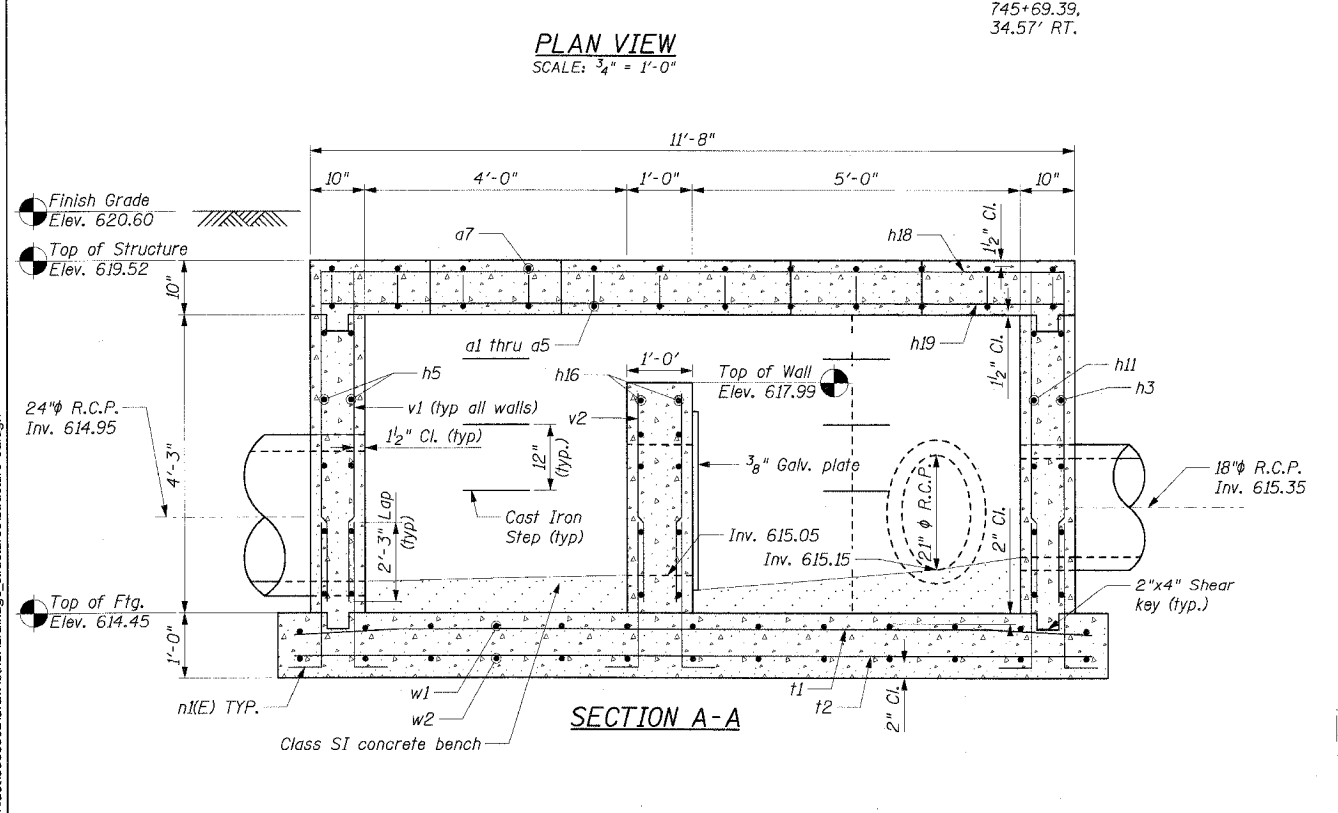
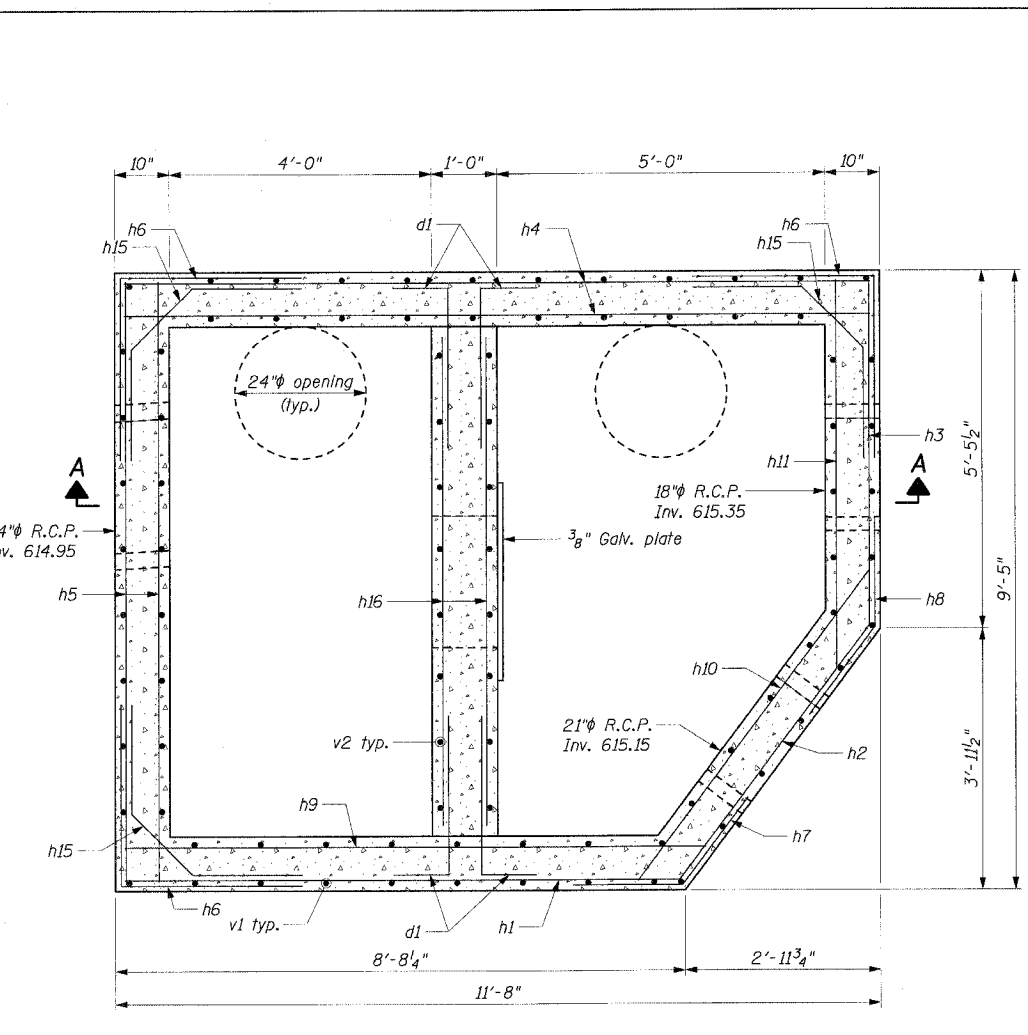
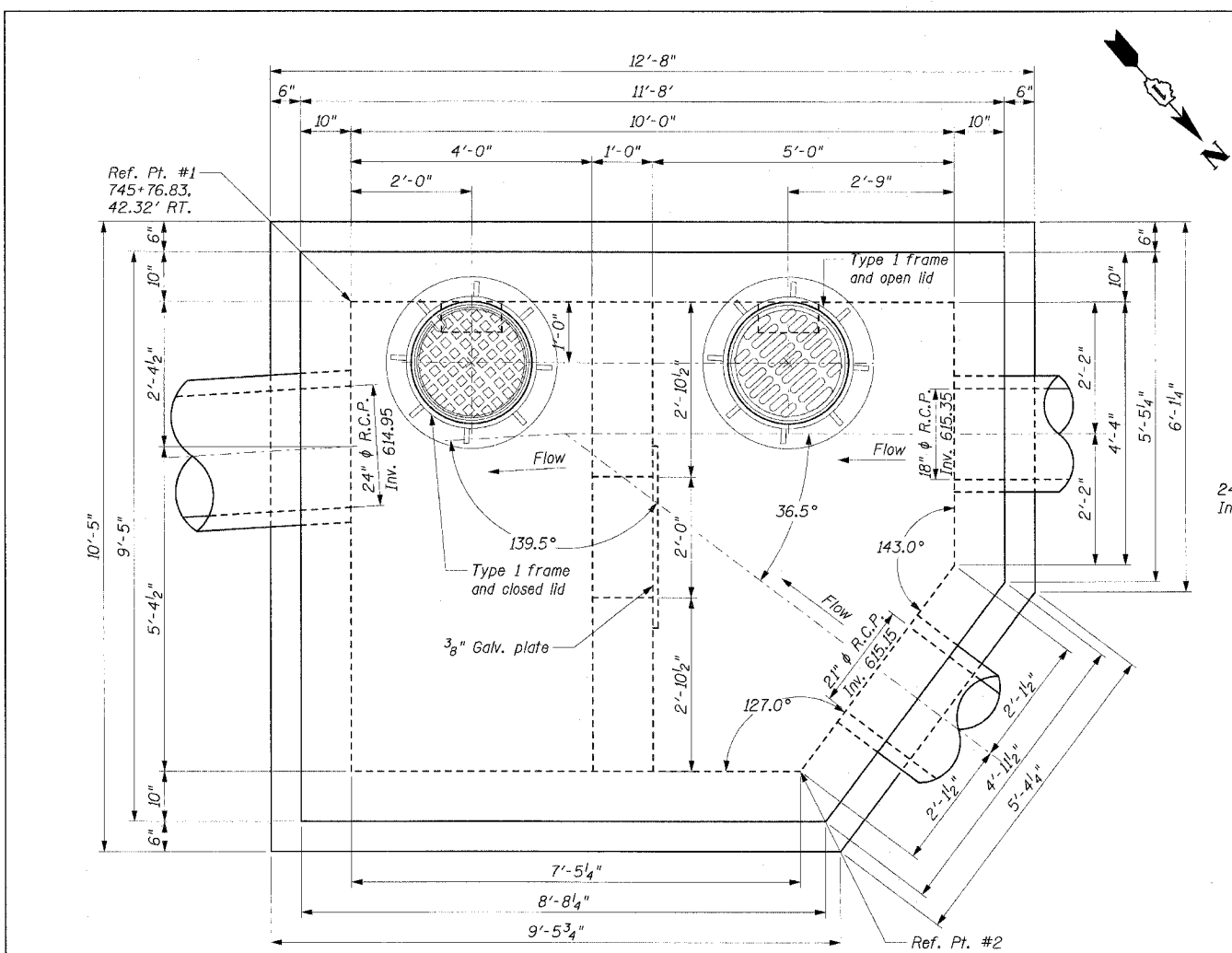
REVISIONS

NAME	DATE

ILLINOIS DEPARTMENT OF TRANSPORTATION
SPECIAL STRUCTURE SP-3
OUTLET 13-SOUTH
 FAP RTE. 575 (U.S.30)
 SECTION (B & 14) R-3
 WILL COUNTY

SCALE: VERT. AS SHOWN
 HORIZ.
 DATE: 3/1/05

DRAWN BY: GRS
 CHECKED BY: ATI



I:\dot0006602\draw\other\drainage_structures\structure-3a.dgn

CMT
 CRAWFORD MURPHY & TILLY, INC.
 CONSULTING ENGINEERS
 SPRINGFIELD, IL ■ AURORA, IL ■ ST. LOUIS, MO